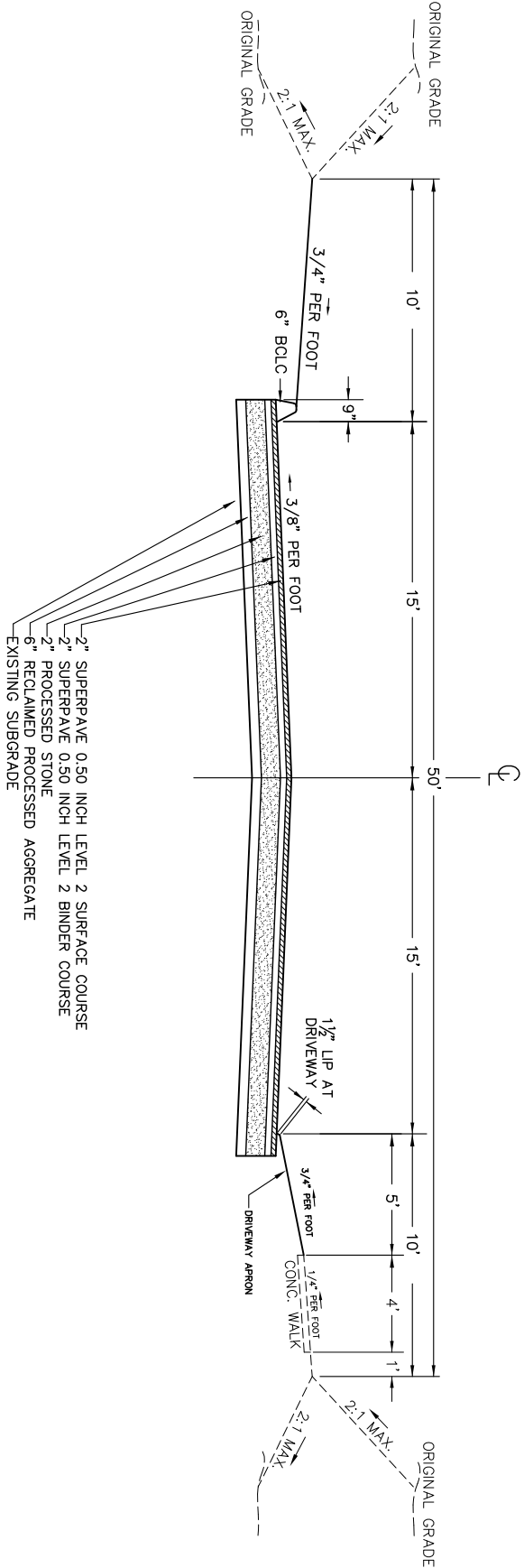
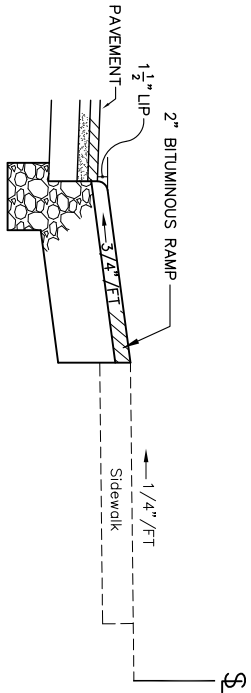


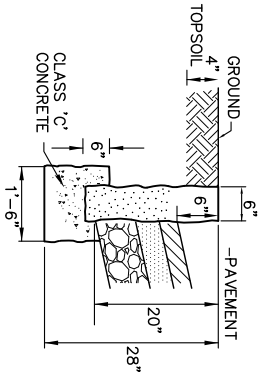
PLAN	STATE	TOWN	PROJ. NO.	PROJ. NO.	YEAR	SHEET
REGION NO.	CONN.	ROCKY HILL	SPH-1118(02)	118-158	2007	3
1						17



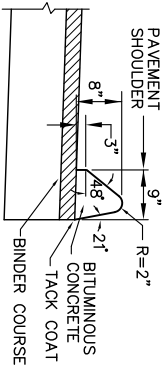
TYPICAL ROAD SECTION



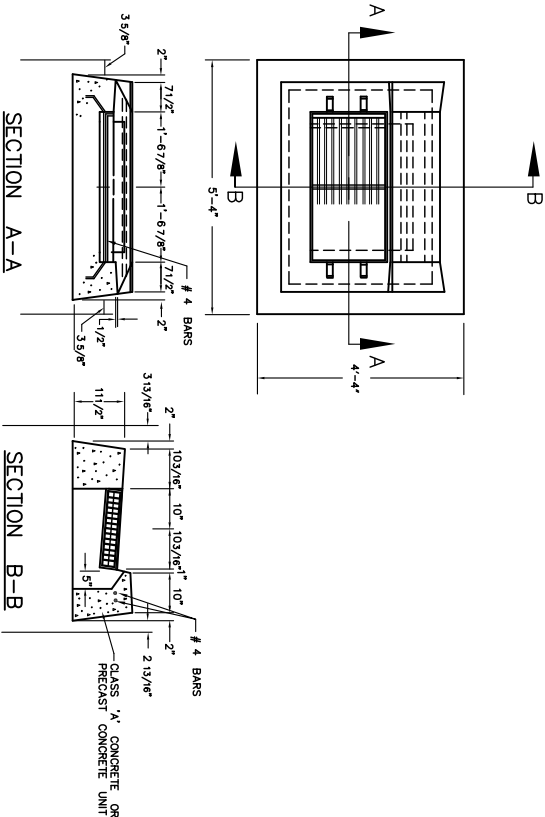
DRIVEWAY APRON



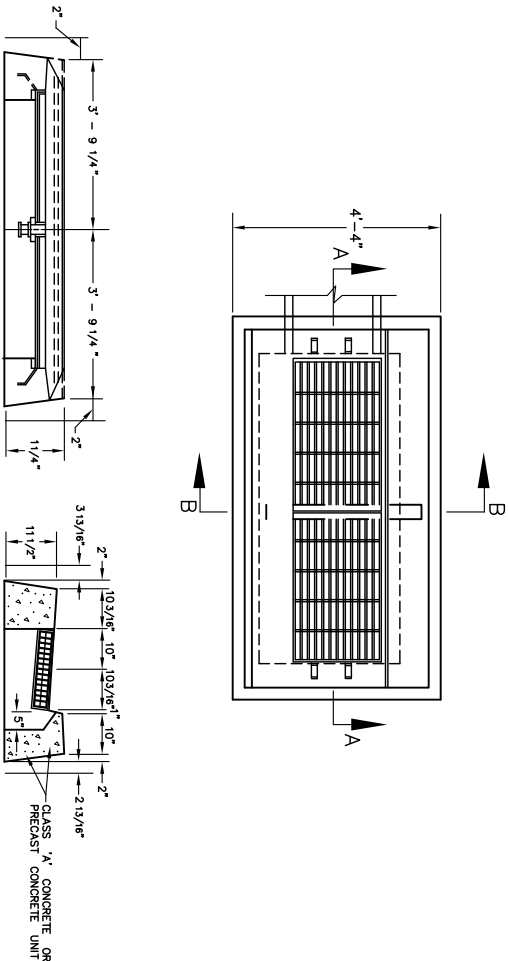
GRANITE RADIUS CURBING




BITUMINOUS CONCRETE LIP CURBING



TYPE 'C' CATCH BASIN TOP



TYPE II - TYPE 'C' CATCH BASIN TOP

			TOWN OF ROCKY HILL		
			ENGINEERING DEPARTMENT 761 OLE MAHON STREET, ROCKY HILL, CT 06067 James C. Sullivan P.E., L.S. Director of Engineering and Highways		
CONSTRUCTION DETAILS			PAVEMENT REHABILITATION		
WOODFIELD CROSSING			WOODFIELD CROSSING		
			ROCKY HILL, CONNECTICUT		
NO.	DATE	DESCRIPTION	BY	Date: 7/5/07	Scale: N.T.S.
					Drawn By: SJS
					Sheet 3 of 17