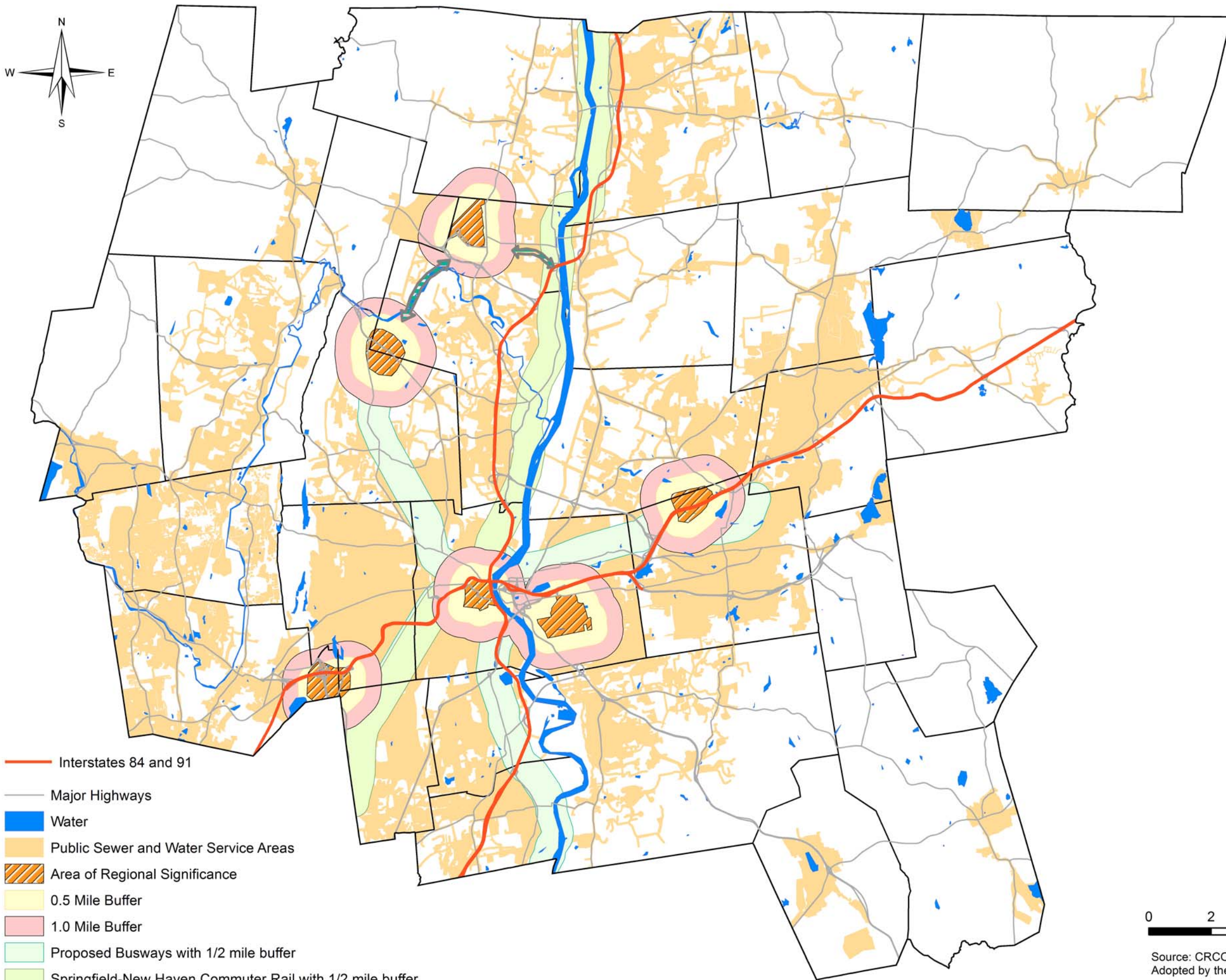


Capitol Region Plan of Conservation and Development

Economic Development Areas of Regional Significance



- Interstates 84 and 91
- Major Highways
- Water
- Public Sewer and Water Service Areas
- Area of Regional Significance
- 0.5 Mile Buffer
- 1.0 Mile Buffer
- Proposed Busways with 1/2 mile buffer
- Springfield-New Haven Commuter Rail with 1/2 mile buffer
- Future Transit Connections to Bradley International Airport

The areas highlighted on the map represent lands that can best support large, regional-scale commercial and industrial development. In order of priority, these areas are:

- 1) Areas of Regional Significance
- 2) Transit Corridors
- 3) Interstate Highway Areas
- 4) Sewer and Water Service Areas

CRCOG will use this policy map, along with goals and policies from the Regional Plan, to support plans and development proposals that are consistent with these priority areas.



Source: CRCOG and Municipal GIS Databases
Adopted by the CRCOG Policy Board May 21, 2014