



CTrides.com

1-877- CTrides (287-4337)

info@CTrides.com

A Service of the Connecticut Department of Transportation

CTrides: Quarter 4 Activity Summary

October - December 2016

The fourth quarter of 2016 focused on the planning and execution of the CTrides advertising campaign, as well as a strategic marketing effort, year-end review and planning for a number of early 2017 marketing events.

CTrides Advertising Campaign

Following the third quarter development of a media strategy and subsequent media calendar, the fourth quarter focus was on creating an engaging campaign and then executing it. The final theme for the Fiscal Year 2017 campaign is “Reboot Your Commute,” and is intended to connect with “rebooting” terminology used in the technology sphere, and lead the target audience to think about starting fresh with their commute.

In order to best execute the graphical look of this campaign, it was decided that a photo shoot would be needed to capture an eclectic mix of commuters on a variety of Connecticut commuting assets (train, bus, van) enjoying “rebooting” their commute. Professionals were brought in and a photo shoot took place on a CTtransit bus, a New Haven Line train and a vRide van. The resulting photos lent themselves to a variety of different creative looks that easily translated to the different elements of the campaign: Outdoor, digital, and print (samples below).

The campaign went live **November 21**.

Outdoor





Print

Digital





Quarterly Report

October—December 2016

Kick Off Your Commute

Starting in October, CTrides launched its **Kick Off Your Commute** campaign, which was a way to tie the fall football season—college and professional—into our marketing outreach. The campaign was a way to engage employees and employers with a fresh approach to the traditional CTrides Outreach setup.

Messaging for this campaign was football-themed and it was accompanied by two raffles through the CTrides Ridematching & Reward program, sponsored by NuRide.com. The raffle for October was tickets to a professional football game of their choice (New York Jets,



New England Patriots, New York Giants) and the November raffle was a tailgate grill. These items were used to tie into the football theme and were extremely popular.

Additionally, the outreach team was given materials corresponding to the campaign including a 5" x 5" handout card, 11" x 17" worksite posters, social media bugs, an email template and corresponding 11" x 17" raffle signs to be used at events.

The final piece of the campaign included a football-field table runner, foam football promotional items (pictured above) and the Form-a-Carpool football toss game. Employees responded favorably to this marketing theme as it was different, engaging and exciting.



2017 Planning

CTrides also used the fourth quarter of 2016 to plan for its annual transportation conference. The 2017 event will be called "Transportation Showcase" and is set for a single date in February, unlike previous versions, which were regionally targeted. The idea of the Showcase is to bring together current partners and stakeholders, as well as draw in new companies and work with them to spread the CTrides message of smart commuting. A creative concept was developed, an online event page launched and a Save-the-Date was distributed to start promoting the event.



Public Relations

The fourth quarter featured CTrides in the following Public Relations items:

- **Hartford Business Journal**
 - Methods being taken to halt gridlock throughout the state
 - Growing trend of Teleworking in Connecticut
- **CTrides ITS International**
 - CTrides Week and other ways to incentivize smart commuting

Quarterly Report

October—December 2016

Partner Activity

CTrides added four new partners this quarter:

- Middlesex Hospital—Shoreline Medical Center
- Chabaso Bakery Inc.
- Mystic Marriott
- Stone Academy (West Haven)

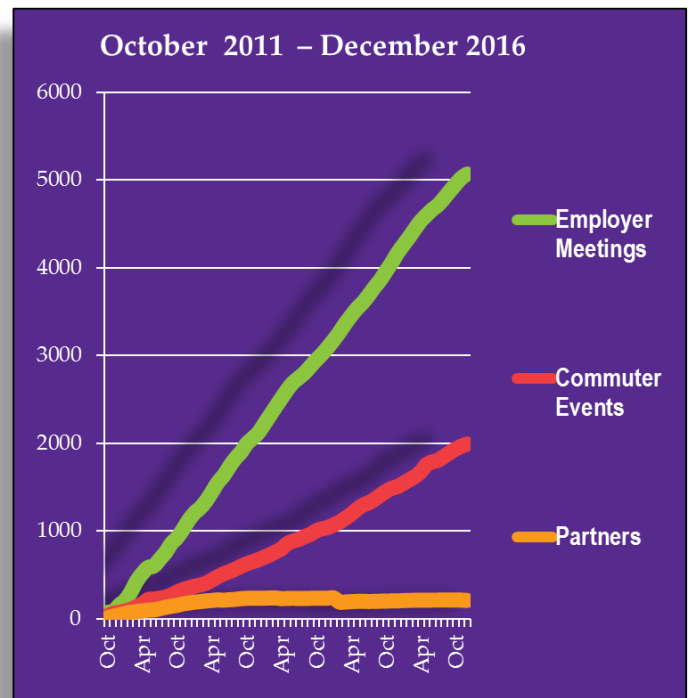
Total number of CTrides Partners is now 213 and the number of Stakeholders to 190.

The team also recognized its Partners of the Month for their commitment in offering employees various commuter benefits.

- **Goodwin College**—Went above and beyond to promote the CTrides message of smart, green commuting; hundreds of students were encouraged, through events and announcements, to try carpooling and public transportation; setup a number of events including a Commuter Selfie Challenge on social media that included a gift card to Black Eyed Sally's.
- **West Haven VA**—Participated in Commuter Survey that collected nearly 200 responses; host Meet-Your-Match and Try-It days; offer full transit subsidy, including several vanpools and preferred parking for vanpoolers; host carpool appreciation day.
- **Norwalk Community College**—Hosted 4 Student Orientation events, along with a presentation and a walk with their Health & Wellness Center; distributed the information to their hybrid/online students; working on a student bus pass program to begin in January 2017; innovating constantly with ideas to reduce campus congestion and improve sustainability.

The CTrides Outreach Team held **196 Worksite Meetings** and **98 Commuter Events** with their worksite partners during Q4. The partner total is now **213** and the stakeholder total is now **190**.

This quarter's worksite activity, segmented by region, can be found on the following pages. A complete list of program partners is in Appendix A.





Regional Worksite Highlights

Western CT includes Litchfield, Housatonic, Bridgeport & Stamford regions.

Highlights

Fairfield Business Council – Will help launch a recognition program for employers and building owners committed to sustainable transportation.

ASML Inc.—Issued employee commuter survey during benefits fair to gain knowledge about workforce commuting habits.

Octagon Corp.—Provided HR team with overview of CTrides' service and how workforce could benefit. Relocation assistance provided as they plan a Spring 2017 move from Norwalk to Stamford and are focused on usability and vanpool options.

City of Stamford—Event at Government Center to provide information to employees about commute options. CTtransit also in attendance.

St. Vincent's Medical Center—Presented to 25 employees with Kennedy Center to discuss how to move forward in managing Commuter Program; also discussed partnership

Empire State Realty Corp. - Awareness campaign with tenants; gained access to several corporations for future outreach.

Naugatuck Comm. College.—Commuter Selfie Challenge for students to take photos commuting green.

American Express—Breakfast & Learn event to provide rideshare alternatives, reward signup opportunities, and encourage trial rides.

Events

Alexion Pharmaceutical
American Express Company
ASML, Inc.

Bigelow Tea
Cartus
City of Danbury
City of Stamford
Empire State Realty Trust
Naugatuck Valley Community College
Octagon
People's United Bank
PEP - Lacey Manufacturing
Southwest Community Health Center
St. Vincent's Medical Ctr
The CT Department of Children & Families
The Workplace
Waterbury Hospital

Meetings

- American Express Company
- ASML, Inc.
- Bigelow Tea
- Bridge House
- Cartus
- City of Norwalk
- City of Stamford
- CityCenter Danbury
- Datto, Inc.
- Empire State Realty Trust
- Fairfield University
- Greater Bridgeport Transit
- HARtransit
- Hologic Inc.
- Housatonic Community College
- Naugatuck Valley Community College
- Norwalk

Community Technical College

- People's United Bank
- PEP - Lacey Manufacturing
- Pitney Bowes-Danbury
- Reed Exhibitions
- Ryan Ryan Deluca LLP
- Southwest Community Health Center
- St. Mary's Hospital
- St. Vincent's Medical Ctr
- Stamford Family YMCA
- Stamford Partnership
- Tauck Tours
- The Business Council of Fairfield County
- The CT Department of Children & Families
- The Kennedy Center, Inc.
- The Workplace
- University of Connecticut-Stamford
- UTC Aerospace Systems
- Waterbury Hospital
- Western Connecticut State University
- Western CT Council of Governments



Regional Worksite Highlights



Southern CT includes Middlesex, New Haven & coastal regions

Highlights

Chabaso Bakery Inc. —Signed new partnership, working on developing a bike-to-work program; and held several events including a Healthy Commute Try-It day and survey distributed in both English and Spanish.

West Haven VA—Held series of events including a general table event, Meet Your Match event and Try It Day, with 80 Ridematch & Reward signups.

Yale University—Sustainability events for Founders Day, as well as carpool event during winter break.

Mystic Marriott—Connected with during an after hours event through the Eastern Connecticut Chamber of Commerce and signed them as partner. Also executed a plot map and survey.

Connecticut College—Re-established relationship and held wellness fair event on 11/9.

Amazon—After several drop-ins, phone calls, emails and informational meetings, setup meeting to discuss partnership.

Medtronic—Restored dormant partnership and signed ERH

Stone Academy, West Haven - Met with new contact, who signed partnership and

is excited to work with CTrides. Will be presenting to each new class every 6-8 weeks

Electric Boat—Restored dormant partnership.

Events

- Albertus Magnus
- Chabaso Bakery, Inc.
- Connecticut College
- Connecticut Valley Hospital
- Eastern Connecticut State University
- Estuary Transit District
- Henkel Corporation
- Job Corps New Haven
- Knights of Columbus
- Middlesex Hospital Shoreline Medical Center
- Mystic Marriott Hotel & Spa
- Southern Connecticut State University
- Stone Academy (Waterbury)
- Veterans Affairs Connecticut Healthcare System (West Haven)
- Yale University

Meetings

- 3M Purification
- Albertus Magnus
- Alexion Pharmaceuticals
- Amazon Sorting Center Wallingford
- Branford Hall (Branford campus)
- Chabaso Bakery, Inc.
- Charter Oak Federal Credit Union
- City of Meriden
- City of New Haven
- Connecticut College
- Connecticut Department of Transportation
- Connecticut Valley Hospital
- Connecticut Young Professionals
- Eastern Connecticut State University
- Electric Boat

- Fusco Corporation
- Gateway Community College
- GoNHGO
- Henkel Corporation
- Job Corps New Haven
- Knights of Columbus
- Lower Connecticut River Valley Council of Governments
- Medtronic
- Middlesex Community College - Meriden Campus
- Middlesex Hospital
- Middlesex Hospital Shoreline Medical Center
- Mitchell College
- Mystic Marriot Hotel & Spa
- Mystic Marriott Hotel & Spa
- Pratt & Whitney - Middletown
- RegalCare
- South Central Regional Council of Governments
- Southeastern Connecticut Council of Governments
- Southeastern Employment Services
- Southern Connecticut State University
- Stone Academy (Waterbury)
- Stone Academy (West Haven)
- Tangoe
- The Chamber of Commerce of Eastern Connecticut
- University of New Haven
- Veterans Affairs Connecticut Healthcare System (West Haven)
- Wesleyan University
- Windham Region Transit District
- Yale New Haven Hospital
- Yale University
- Yale-New Haven Hospital



Regional Worksite Highlights

Eastern CT includes the Hartford, North and Central regions of Connecticut



Highlights

Triumph— Large turnout for formal relocation presentation as company is moving to Windsor. Significant interest in ridesharing.

University of Connecticut—First tabling event with new relationship. Planned events with Zim-ride and Zipcar. Presentation at UConn Model UN Event drew a large and highly interested group, and a large number of NuRide signups.

Goodwin College - Received partner of the month award for their efforts to include CTrides in their sustainability program and offering a gift for a Commuter Selfie Challenge.

Dept. of Energy & Environmental Protection—Obtained zip codes and will perform analysis to hold a Meet Your Match event focused on vanpooling in early 2017.

Greater Hartford YMCA - Re-established working relationship with November event.

Trinity College - Working with mentoring program to get students to use transit around Hartford. Held commuter selfie challenge.

IRS - Invited to join their holiday lunch

where we engaged with employees and gave a presentation about CTrides, NuRide, and the ERH program.

Events

- Aetna
- Albertus Magnus, East Hartford
- Capital Workforce Partners
- Central CT State University
- Connecticut Children's Medical Center
- Connecticut Department of Transportation
- CTfastrak
- Department of Administrative Services
- Eversource Energy
- Goodwin College
- IRS
- Job Corps (Hartford)
- Manchester Community College
- MassMutual
- Prudential
- Stone Academy (East Hartford)
- Trinity College
- Triumph
- Triumph Actuation Systems
- Tunxis Community College
- University of Bridgeport
- University of Connecticut (Storrs)
- Waterbury Hospital
- West Hartford Health and Rehab

Meetings

- Aetna
- Capital Community College
- City of New Britain
- Connecticut Children's Medical Center
- Connecticut Department of Transportation
- CPTV
- Department of Children and Families



(Hartford)

- Department of Energy and Environmental Protection (Hartford)
- Department of Energy and Environmental Protection (New Britain)
- Department of Revenue Services
- Eversource Energy
- Goodwin College
- Hartford Steam Boiler
- Homegoods Distribution
- IFG Companies (Guilford Specialty Group)
- IRS
- Job Corps (Hartford)
- Konica Minolta Business Solutions
- Manchester Community College
- MassMutual
- Polamer Precision, Inc.
- Prudential
- Rockbestos Superant Cable
- Shipman & Goodwin
- Stone Academy (East Hartford)
- The Hartford
- Travelers
- Trinity College
- Triumph Actuation Systems
- TSKP Studios
- Tunxis Community College
- University of Connecticut (Storrs)
- University of Saint Joseph
- West Hartford Health and Rehab
- YMCA Greater Hartford

Customer feedback:

"Best customer support I ever had with a train company! Highly Satisfied!!!"

"Very helpful and pleasant."

"Thanks for the quick response."

"Cindy was very sympathetic and understanding with a lot of knowledge as to how I would have to get from my home to work each day. Very professional!!"

Emergency Ride Home Program Change

During the fourth quarter of 2016, the Guaranteed Ride Home Program was transitioned to the Emergency Ride Home Program with a launch of January 1, 2017. A new webpage was created at CTrides.com/ERH. Changes to the program were made for the following reasons:

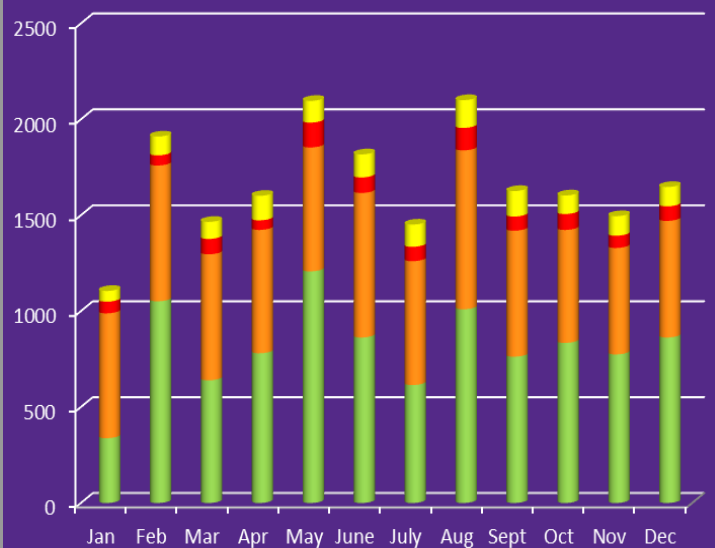
- Annual savings of \$27,000 in administrative costs
- Increased QA/QC
- Increased choices
- Increased ability to detect fraud and track records through Salesforce
- Increased ability to identify trends / usage

24 Companies / Organizations registered for the program during the fourth quarter

Customer Service Details:

- **4,748 Total** Inquiries into CTrides
 - * **1,752 inbound calls**
5 inquiries about available disabled services
1 bilingual inquiries
 - * **Responded to 2,473 email inquiries**
Great or OK rating on 80% of emails
 - * **223 marketing/informational outbound calls**
 - * **Facilitated 300 live online & 65 SMS chats**
4.82 out of 5 (best) avg. rating on all chats
- **Provided 81 Guaranteed Rides** to 61 monthly vanpool riders, 18 express bus commuters and 2 Shore Line East/Metro-North train riders.
- **Distributed 42 trial bus passes to commuters** meeting the program's Trial Ride criteria.
- **A follow-up survey** for the quarter netted the following results with 11 follow-up survey respondents, 6 used the pass, 6 will continue to use transit and 5 rated service 4-5 out of 5.

4th Quarter 2016



- ▶ **1,752— Inbound Calls**
- ▶ **2,473— Email Inquiries**
- ▶ **223— Outbound Calls**
- ▶ **300— Online Chats**

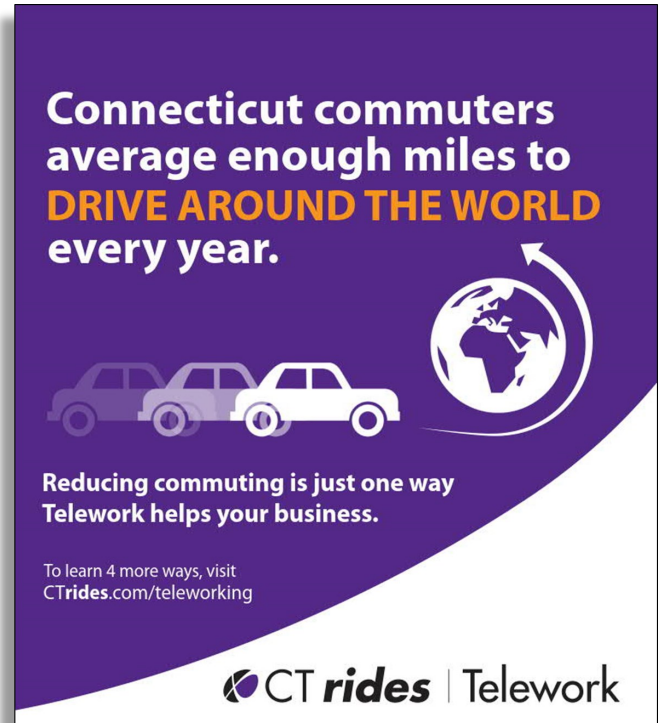
Telework Marketing & Activities

During the fourth quarter of 2016, we focused on the telework marketing campaign. Advertising creative was developed and launched.

The campaign (creative at right) centered on productivity. Header and copy highlighted the stark commuting statistic and was intended to drive the message that staying home really does make a difference.

The campaign was launched in two arenas. Print advertising was used to target readers of business journals. Digital advertising was placed on LinkedIn, CTSHRM.org and through an AD network that specifically targets adults in the state of Connecticut who work in Middle Management/Group Director, IT, HR or Finance Department with companies of 100+ employees. Because of this narrow search field, the AD was trafficked out on a number of various news sites in order to maximize traffic to the telework page of CTrides.com.

Additionally, planning began for a CTrides Telework Week media event in February to draw media attention to the increasing trend of telework. The event is a planned collaboration with Yale University as a result of a recent sustainability plan they put it that places emphasis on growing teleworking for staff and faculty. This growing trend of teleworking was highlighted in an article in the *Hartford Business Journal* in November (pictured below). CTrides was featured prominently as a key stakeholder to this growth sector.



Telework Client Activities

Telework business consulting included the following companies:

- **SERC, Middletown**—Client has advised that their pilot is going extremely well with both management and employees pleased with the arrangement. Productivity is enhanced and they have found that collaboration has in fact increased throughout the organization due to the ease of accessing personnel and resources. Documentation prepared and submitted for their manual to prepare for formalization of program. Anticipated pilot end date mid-November.
- **Connecticut Children's Medical Center, Hartford**—It was expressed to outreach that there was potential telework interest to reduce parking concerns. Electronic introduction made and a presentation suggested at one of the director's meetings in early 2017; Follow-up regarding details of service offerings.

CTrides Ridematching & Rewards Program

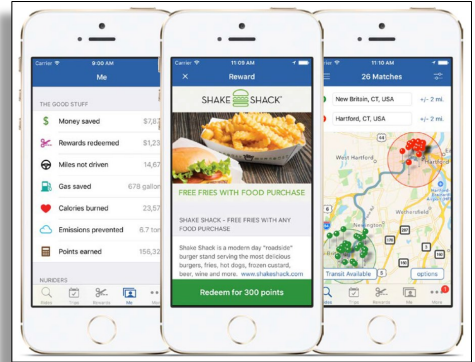
In the fourth quarter of 2016, **1,297 new members** were added to the CTrides Ridematch & Reward program.

These additional members reflect the results of increased marketing and outreach efforts, as well as a number of raffles, sponsored and administered through the program vendor NuRide. The major fourth quarter raffles included NFL tickets, a Tailgating grill, and an iPad (seen below). These raffles were featured prominently on the website and were the most redeemed rewards of the quarter. The majority of raffle winners came from CTrides partner organizations including Yale University, CT Dept. Energy & Environmental Protection, and CT Dept. of Labor.

Technical developments were also made, including the completion and launch of an iOS app. The app includes a number of features and is a faster, easier version than the mobile or desktop sites. While it's live on the app store, it's not being heavily marketed until beta testing is completed in 2017 Q1. Additional technical updates are detailed below:

v 8.7.0 through v 8.8.1:

- Updated SLL certificate for enhanced security
- Fixed bug in vanpool management and automatic dashboard delivery.
- Added additional options for planning trip (featured at top right) including bike share locations, car share locations and electric vehicle charging locations.
- Updated menu to read "Find Rides" instead of "Find NuRiders"
- Added "Find Carpool Pals" email
- Registered first 5 companies to accept mobile coupons—Cheese Truck, Ordinary, Caseus, Shake Shack, & KoKoFit



As of the 4Q 2016, there are more than 200 businesses, agencies and municipalities partnered with CTrides — *New Partners highlighted in bold*

- | | | |
|--------------------------------------|--|---|
| 1. 1-169th Aviation Regiment | 32. City of Waterbury | Environmental Protection (DEEP) - Hartford |
| 2. 3M Purification | 33. City of Waterbury - Dept. of Public Works | 51. DEEP— (New Britain) |
| 3. Acme Monaco Group | 34. City of Waterbury - Public Health | 52. Department of Public Health (Rocky Hill) |
| 4. Albertus Magnus | 35. Collins and Jewell Co. | 53. Department of Revenue Services |
| 5. American Heart Association | 36. Comet Technologies | 54. Diageo, Inc. |
| 6. Anthem Blue Cross Blue Shield | 37. Community Health Group | 55. Duncaster Retirement Community |
| 7. ASML, Inc. | 38. Connecticare | 56. Eastern Account Systems |
| 8. Avon Health Center | 39. Connecticut Children's Medical Center | 57. Eastern Account System (Danbury) |
| 9. BELIMO Aircontrols | 40. Connecticut Department of Transportation | 58. Eastern Connecticut State University |
| 10. Bigelow Tea | 41. Connecticut Valley Hospital | 59. Eastern Connecticut Transportation Consortium |
| 11. BikeWalkCT | | 60. Eastern CT Workforce Investment Board |
| 12. Bishop Woods Executive Academy | | 61. Eastern Workforce Investment Board |
| 13. BLT Management, LLC | | 62. Electric Boat |
| 14. Branford Hall (Branford campus) | | 63. Eversource Energy |
| 15. Branford Hall (Windsor campus) | | 64. Fairfield Public Schools |
| 16. Bridgeport Fittings | | 65. Ferguson Electric CO |
| 17. Bridgeport Public Schools | | 66. First Niagara Bank |
| 18. Building & Land Technology | | 67. Foxwoods Resort Casino |
| 19. Capital Community College | | 68. Fusco Corporation |
| 20. Carrow Real Estate | | 69. Gateway Community College |
| 21. Cartus | | 70. Gaylord Rehabilitation Hospital |
| 22. Chabaso Bakery Inc. | 42. Connecticut Water | 71. General Cable |
| 23. Cheshire Public Schools | 43. Coventry Public Schools | 72. Glastonbury Chamber of Commerce |
| 24. CHUBB Specialty Ins. | 44. Covidien | 73. Globe Pequot Press |
| 25. Cigna | 45. Danbury Public Schools | 74. Goodwin College |
| 26. City of Bridgeport | 46. Department of Administrative Services | 75. Greater Bridgeport Regional Council |
| 27. City of Danbury | 47. Department of Children & Families | 76. Greater Bridgeport Transit |
| 28. City of New Britain | 48. Department of Economic and Community Development | 77. Greater Waterbury YMCA |
| 29. City of New Haven | 49. Department of Emergency Services & Public Protection | 78. The Hartford |
| 30. City of New London | 50. Department of Energy and | 79. Hartford Steam Boiler |
| 31. City of Stamford Land Use Bureau | | 80. HARTransit |
| | | 81. Homegoods Distribution Center |
| | | 82. Home of the Brave |
| | | 83. Housatonic Community College |



Quarterly Report

October—December 2016

Appendix A: Partner List

- | | | |
|---|--|--|
| 84. Housatonic Valley Council of Elected Officials | College | cut |
| 85. Hughes Health and Rehabilitation | Center | Council of Governments |
| 86. IKEA (New Haven) | 116. New Britain CT Works | 144. Southern Connecticut State University |
| 87. IRS Federal Building | 117. New Britain Downtown District | 145. Southwest Community Health Center |
| 88. JLL Americas | 118. Newtown High School | 146. St. Mary's Hospital |
| 89. Job Corps New Haven | 119. Northeast Utilities | 147. Stamford Chamber of Commerce |
| 90. Kimberly Hall Healthcare | 120. North East Transportation Co. | 148. Stamford Downtown Special Services District (SDSSD) |
| 91. Lawrence + Memorial Hospital | 121. Northeastern Connecticut Council of Governments | 149. Starwood Hotel |
| 92. Legrand Ortronics | 122. Northwest Connecticut Chamber of Commerce | 150. Stone Academy (East Hartford) |
| 93. Lincoln Culinary Institute (Hartford) | 123. Northwestern Connecticut Community College | 151. Stone Academy (Waterbury) |
| 94. Lincoln Life Insurance/Freemont Group Management | 124. Norwalk Community College | 152. Stone Academy (West Haven) |
| 95. Lincoln Technical Institute (New Britain) | 125. Norwalk Transit | 153. Tauck Tours |
| 96. Litchfield Public Schools | 126. Oracle Corporation | 154. Thames Valley Council for Community Action |
| 97. Lord Chamberlain Nursing Center | 127. Paier College of Art | 155. The Davis Companies |
| 98. Lower Connecticut River Valley Council of Governments | 128. People's United Bank (Bridgeport) | 156. The Kennedy Center, Inc. |
| 99. Lowe's Distribution Center | 129. Pratt & Whitney (Middletown) | 157. Thomaston Public Schools |
| 100. Macy's Logistics | 130. Pratt and Whitney (East Hartford) | 158. Three Rivers Community College |
| 101. Malkin Properties | 131. Projects Inc. | 159. Torrington Public Schools |
| 102. Manchester Community College | 132. Prudential | 160. Town Green Special Services District |
| 103. Marrakech, Inc. | 133. Quinebaug Valley Community College | 161. Town of Barkhamsted |
| 104. MassMutual | 134. Quinebaug Valley Community College (Willimantic Center) | 162. Town of Brookfield |
| 105. Memry Corporation | 135. Quinnipiac University | |
| 106. Middlesex Community College | 136. Reckson/SL Green | |
| 107. Middlesex Community College - Meriden Campus | 137. Saint Francis Hospital | |
| 108. Middlesex Hospital | 138. Seabury Retirement Community | |
| 109. Middlesex Hospital—ShoreLine Medical Center | 139. SeeClickFix | |
| 110. Middletown Downtown Business District | 140. Shipman & Goodwin | |
| 111. Mitchell College | 141. Siemens Healthcare Diagnostics | |
| 112. Mohegan Sun | 142. South Central Regional Council of Governments | |
| 113. Morgan Stanley | 143. Southeastern Connecticut | |
| 114. Mystic Marriott | | |
| 115. Naugatuck Valley Community | | |



Quarterly Report

October—December 2016

Appendix A: Partner List

- | | |
|--|--|
| 163. Town of Cheshire | 198. Voya Financial |
| 164. Town of Coventry | 199. Walgreens Distribution Center |
| 165. Town of Fairfield | 200. Waterbury Board of Education |
| 166. Town of Farmington | 201. Waterbury Hospital |
| 167. Town of Greenwich | 202. Wesleyan University |
| 168. Town of Hamden | 203. West Hartford Health and Rehab |
| 169. Town of Hartland | 204. Western CT Council of Governments |
| 170. Town of Lebanon | 205. Western CT State University |
| 171. Town of Monroe | |
| 172. Town of New Milford | |
| 173. Town of North Branford | |
| 174. Town of Redding | |
| 175. Town of Rocky Hill | |
| 176. Town of Scotland | |
| 177. Town of Thomaston | |
| 178. Town of
Wallingford | |
| 179. Town of Westport | |
| 180. Town of Wethersfield | |
| 181. Town of Windham | |
| 182. Town of Windsor | |
| 183. Travelers | |
| 184. Trinity College | |
| 185. Triumph | 206. Westport Police Department |
| 186. UConn Health Center | 207. Whole Foods (Glastonbury) |
| 187. United Illuminating | 208. Windham Region Transit District |
| 188. United Steel | 209. XL Group |
| 189. United Tech. Aerospace | 210. Yale New Haven Hospital |
| 190. University of Bridgeport | 211. Yale University |
| 191. University of CT (Storrs) | 212. Yarde Metals Inc. |
| 192. University of CT (Stamford) | 213. YMCA Greater Hartford |
| 193. University of Hartford | |
| 194. University of New Haven | |
| 195. Valley Transit District | |
| 196. Veterans Affairs CT Healthcare
System (Newington) | |
| 197. Veterans Affairs CT Healthcare
System (West Haven) | |

