

# CTDOT Diversion Route Plans Update



IBI GROUP  
CTDOT  
Diversion Route Plans  
July 09, 2018

## DIVERSION ROUTE PLANS UPDATE

IBI Group has been tasked with updating over 500 diversion route plans across the state



**Process for updating each diversion route plan**

1. Create and maintain a new geodatabase.
2. Create new features and import road, exit, and town labels.
3. Draw each diversion.
4. Label traffic signals and required signage, rotating the sign labels to match the orientation they should be placed in the field.
5. Update legend, including diversion directions text, map reference ID, and summary of required signage.
6. Share map package and save as ArcGIS 10.3.
7. Generate PDF.

**QA Process**

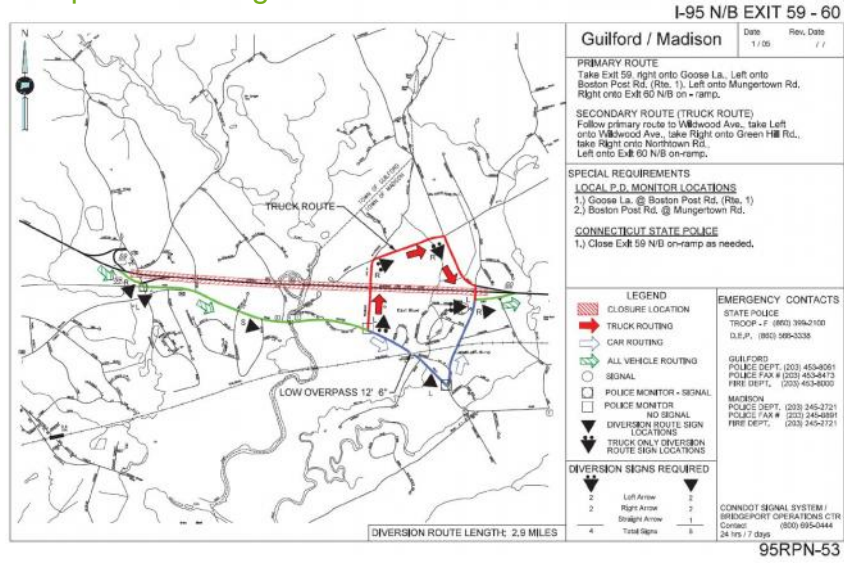
1. Initial QA process by IBI Group
2. Submitted to CTDOT for review and comment
3. Second QA process by IBI Group
4. Submitted to CTDOT for final approval

No changes are being made, except for obvious typos.

An exception list is generated for changes/issues identified during update process.

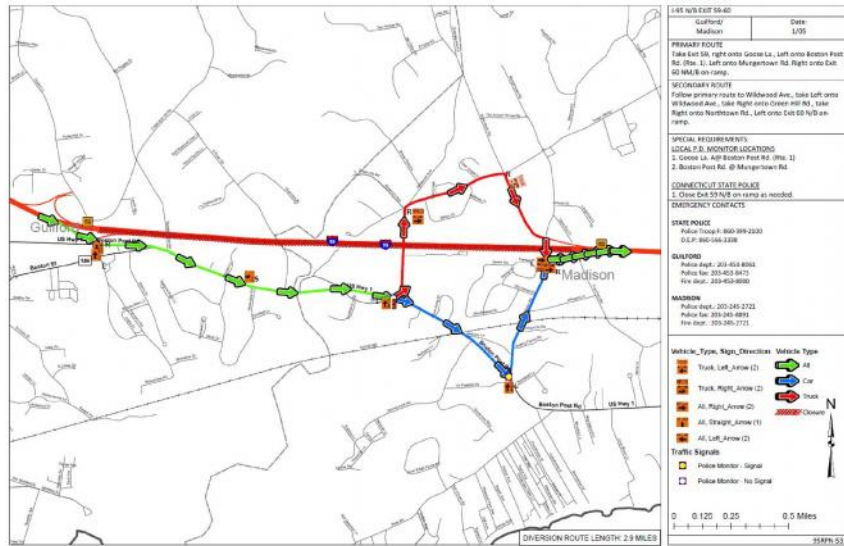
**DIVERSION ROUTE PLANS UPDATE**

**Sample of Existing Diversion Route Plan**



**DIVERSION ROUTE PLANS UPDATE**

**Sample of Updated Diversion Route Plan**



### Progress

- Work has commenced on all plans
- Approximately 200 plans have been through initial QA process and received comments from CTDOT
- Based on CTDOT comments, revisions are being made to all plans.
- By year's end, all plans will be converted to electronic GIS format, and new PDFs available.

# Thank you!