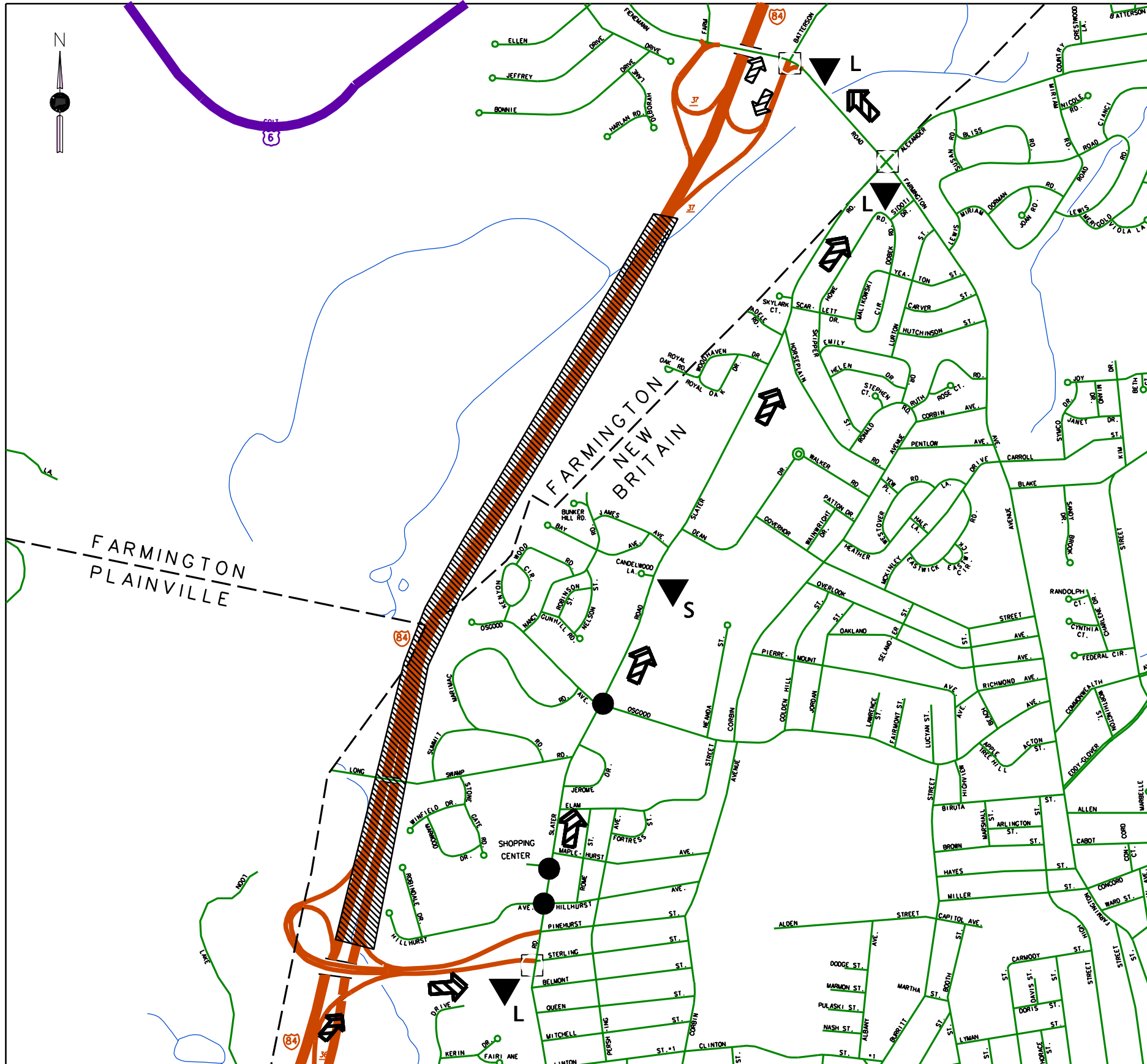


I-84 E/B Exits 36-37



NEW BRITAIN/ FARMINGTON

Date 10/14/97
Rev. Date 1/21/98

PRIMARY ROUTE

Exit 36 left on Slater Rd., left on Fienemann Rd. to I-84 on ramp.

SECONDARY ROUTE

SPECIAL REQUIREMENTS

- 1.) Police Monitor Locations (3).
- 2.) On ramp at Pinehurst St. to be closed.

LEGEND

- CLOSURE LOCATION
- TRUCK ROUTING
- CAR ROUTING
- ALL VEHICLE ROUTING
- SIGNAL
- POLICE MONITOR - SIGNAL
- POLICE MONITOR NO SIGNAL
- DIVERSION ROUTE SIGN LOCATIONS
- TRUCK ONLY DIVERSION ROUTE SIGN LOCATIONS

EMERGENCY CONTACTS

STATE POLICE
TROOP - H (860) 534-1000
D.E.P. 860-566-3338
D.O.T. 1-800-695-0444

NEW BRITAIN
POLICE DEPT. (860) 229-0321
POLICE FAX # (860) 826-3161
FIRE DEPT. (860) 826-3001

ADJACENT TOWN INFO
PLAINVILLE P. D.
(860) 747-1616

DIVERSION SIGNS REQUIRED

	Left Arrow	3
	Right Arrow	0
	Straight Arrow	1
	Total Signs	4

SIGNAL SYSTEM
CONTACT - XXXXXXXXXX
(XXX) XXX-XXXX
X:XX am - X:XX pm