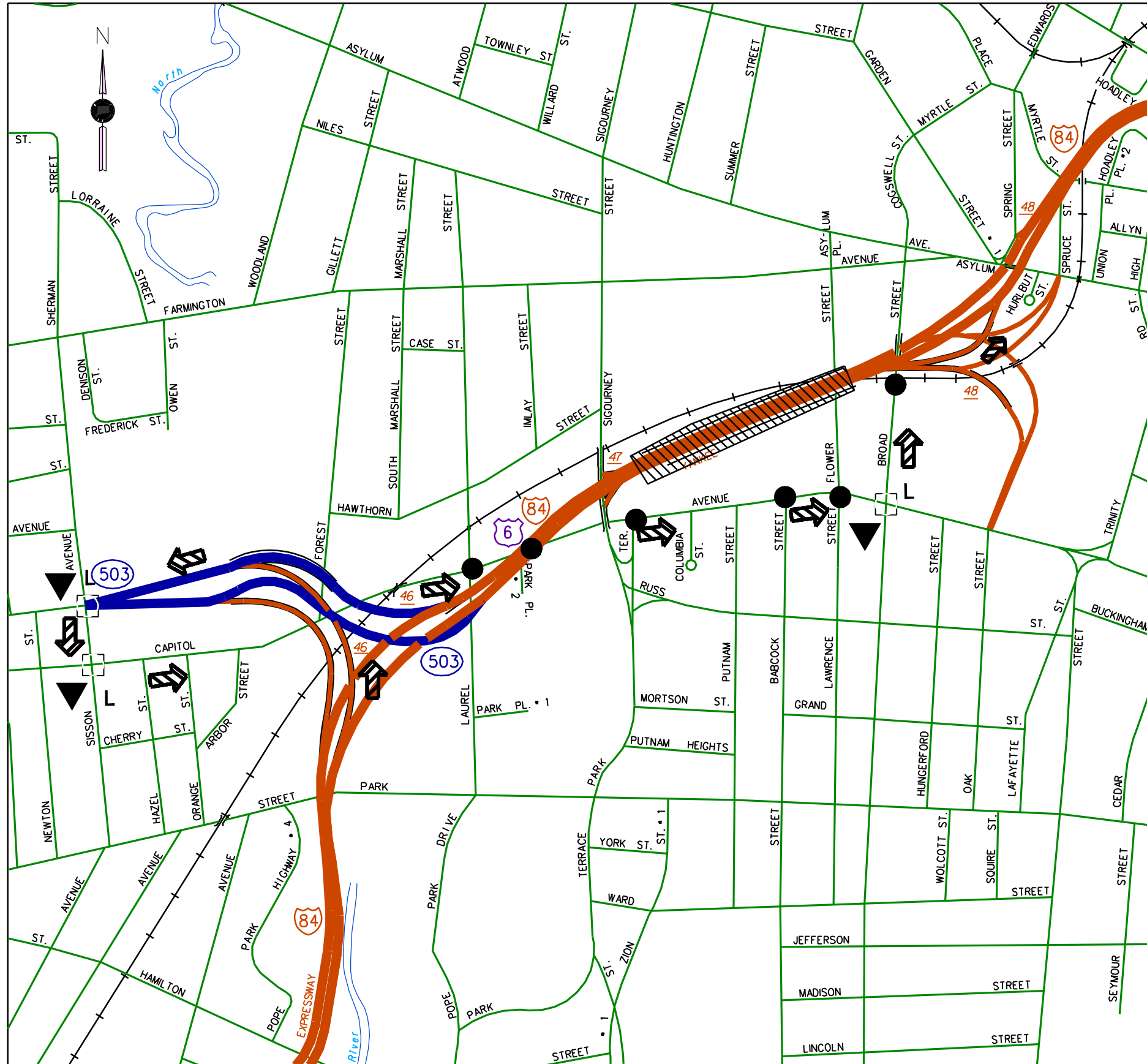


I-84 E/B Exits 47-48



HARTFORD

Date 10/16/97 Rev. Date 01/20/98

PRIMARY ROUTE

Take Exit 46 to Sisson Ave, Left on Sisson Ave. to Capitol Ave. Left onto Capitol Ave. to Broad St. Left on Broad St. to on ramp on right.

SECONDARY ROUTE

SPECIAL REQUIREMENTS

1.) Police Monitor Locations (3)

LEGEND

- CLOSURE LOCATION
- TRUCK ROUTING
- CAR ROUTING
- ALL VEHICLE ROUTING
- SIGNAL
- POLICE MONITOR - SIGNAL
- POLICE MONITOR NO SIGNAL
- DIVERSION ROUTE SIGN LOCATIONS
- TRUCK ONLY DIVERSION ROUTE SIGN LOCATIONS

EMERGENCY CONTACTS

STATE POLICE
TROOP - X (XXX) XXX-XXXX
D.E.P. 860-566-3338
D.O.T. 1-800-695-0444

HARTFORD
POLICE DEPT. (860) 527-6300
POLICE FAX # (860) 543-8732
FIRE DEPT. (860) 722-8200

ADJACENT TOWN INFO

POLICE DEPT.
WEST HARTFORD
(860) 233-2121

DIVERSION SIGNS REQUIRED

X	Left Arrow	3
X	Right Arrow	0
X	Straight Arrow	0
X	Total Signs	3

SIGNAL SYSTEM
CONTACT - XXXXXXXXXX
(XXX) XXX-XXXX
X:XX am - X:XX pm