

# Silver Lane Transportation Corridor Study

May 23, 2017

Silver Lane Advisory Committee Meeting



# Introduction to Transportation Corridor Study

- Corridor Study Components
- Project Team
- Advisory Committee Roles
- *Preliminary Corridor Issues*
- Scope of Work
- Study Schedule
- Next Steps

# What is a corridor study?

- A Multi-Modal planning process to prepare a master plan for a transportation corridor

# Why prepare a corridor master plan?

- Promote orderly growth
- Promote efficient use of public infrastructure
- Assure there is adequate infrastructure to accommodate growth
- Provide guidelines for roadway improvements that all parties (Town, State, developers, properties owners) can refer to

# Evolution of Corridor Studies

## Traditionally

- Facilities Plan - identify needed transportation facility improvements to assure the facilities can handle current & future traffic efficiently and safely.

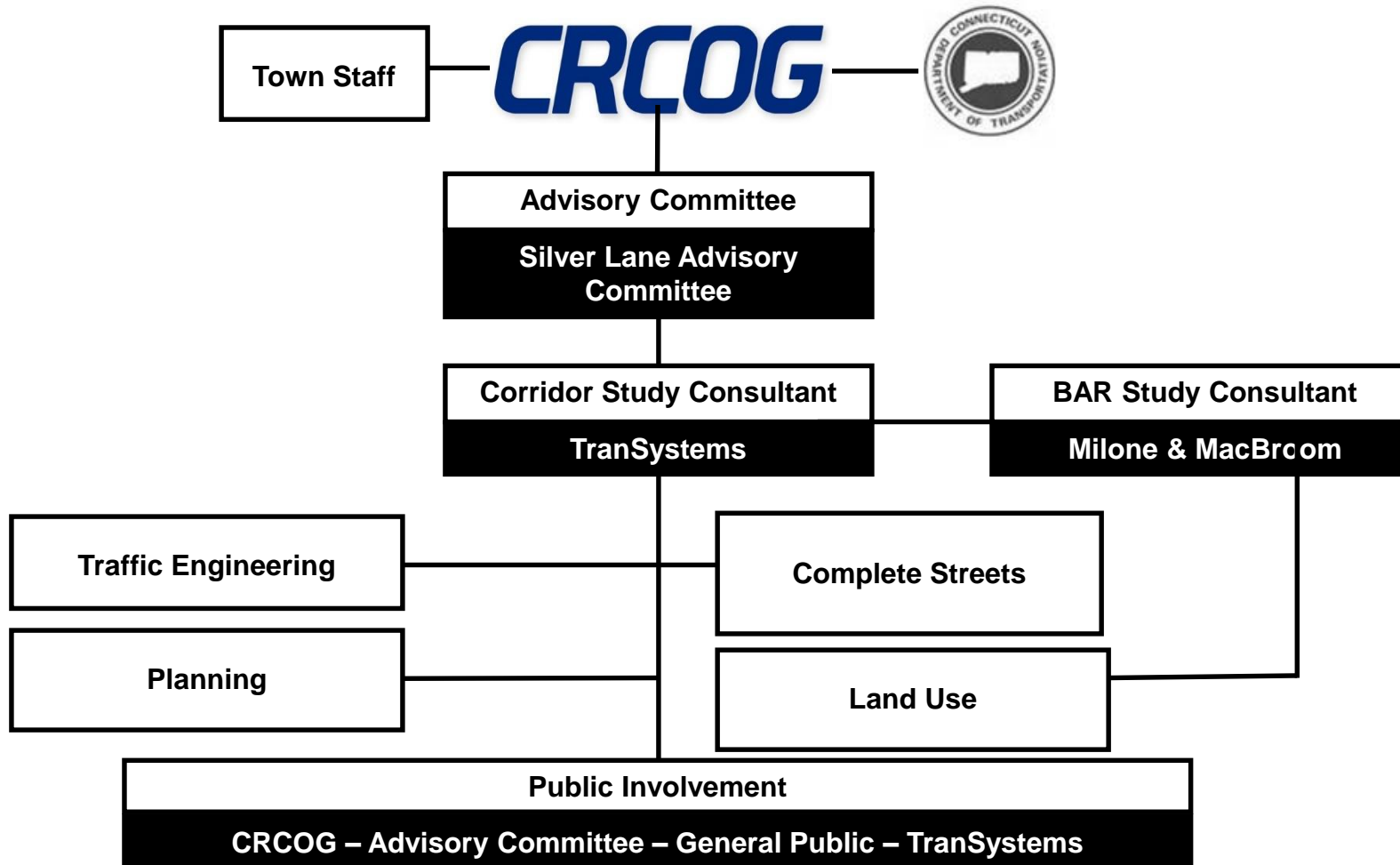
## New Direction

- Context Sensitive plan – recognizes that transportation facilities are one piece of the larger community fabric.
- Facilities need to fit into communities they pass through

# Silver Lane Transportation Corridor Study

- Well integrated with BAR Grant Land Use Study
- Considering a multi-modal corridor to service the future land use vision and recommendations

# Study Team



# Advisory Committee Roles/Responsibilities

- Regular meetings (expect six meetings focused on the transportation study)
- Attendance at Public Information Meetings (three related to the transportation study)
- Guide consulting team as it works with local issues and concerns
- Operates on committee consensus; if full committee cannot reach decisions, majority and minority opinions will be documented in the meeting minutes



# Preliminary Corridor Issues



- High percentage of accidents at driveways and local road intersections
- Minimal transit amenities
- Wide intersections – difficult for pedestrians

# Silver Lane Corridor Study Scope of Work

- Task 1            Project Management
- Task 2            Community Involvement
- Task 3            Data Collection
- Task 4            Assessment of Existing Conditions (Roadway / Traffic, Access Management, Transit / Commuter, Land Use / Development, All modes of Transportation)
- Task 5            Assessment of Future Conditions
- Task 6            Identification and Analysis of Alternatives
- Task 7            Development of Traffic Improvement and Development Management Plan

# Community Involvement

- Advisory Committee
- Technical Review Meetings
- Public Informational Meetings and Local Outreach

# Next Steps

- Finish Data Collection and Prepare Existing & Future Conditions
- Present Existing & Future Conditions to Advisory Committee
- Present Existing & Future Conditions to Public