

CTrides: Quarter 1 Marketing Activity Summary

January—March 2020

CTrides website

Website content and copy development were ongoing throughout the quarter as well as the coding development phase of our approved pages.

By February, coding for Homepage and the Commuter and Employer landing pages were completed and responsiveness of pages was refined. In March, the development of the DOT-approved web pages continued and the responsiveness testing began. DOT changes were included in the Find Your Commute tool. Content development on template pages were continued and the integration of Salesforce was initiated. All forms and their fields were identified and completed. The focus of homepage and employer landing pages were redirected to teleworking resources.

“Along the Lines” Podcast

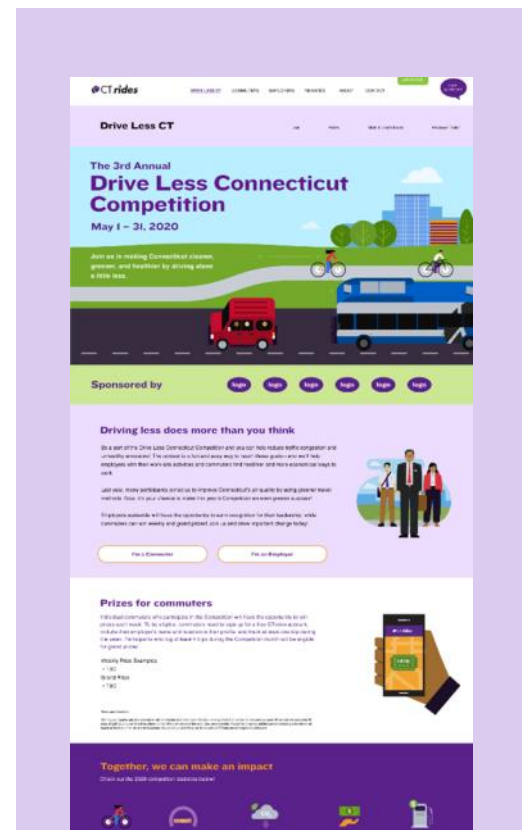
In January the pilot episode topic was selected, “Building a Transportation System for the 21st Century.” The episode outline development began and the music bed feedback was received. By the end of February, twenty seven rider interviews regarding Connecticut's transportation system were conducted at three locations: New Haven Union Station, New Haven State Street station and State House Square in Downtown Hartford.

“Along the Lines” Newsletter

Newsletter article topics were approved, initial layout reviewed, and the design and content feedback were provided to The Watsons for revisions. In February, the newsletter photographs and copy content were updated, DOT changes were implemented, and the publication is on hold because of COVID-19 epidemic.

SLE 30th Anniversary

In January, a revised plan was developed and presented to CTDOT. The plan included PR, social media and website announcements to officially recognize the anniversary. Also, riders appreciation days at each SLE station over the course of one or two weeks was proposed. Postponed due to the COVID-19 epidemic.



CTrides: Quarter 1 Marketing Activity Summary (Continued)

January—March 2020

Statewide Transportation Conference

In January, we developed a plan for the Statewide Transportation Conference and the proposal was presented to DOT for review. The plan included a networking session, breakfast with keynote speakers and panel discussion, and break-out and closing sessions.

New Haven Union Station 100th Anniversary

In April, New Haven Union Station celebrated its 100th Anniversary. Planning for the anniversary event began in January. CTrides attended many meetings and conference calls regarding the planning of the event. Work also began in the research and development of the design of a plaque that will be installed at the station to commemorate the milestone.

By February, the CTrides-designed logo was completed and approved. Social media posts and email blasts were drafted and sent to solicit NHUS photos and memories from the public. Ideation phase for art commemorative items began and rail museums were contacted to share NHUS/rail memorabilia and photos.

In March, communications were published via social media and email blasts soliciting New Haven Union Station 100th Anniversary celebration photos and materials. Art for commemorative items was completed and orders were placed. CTrides began searching for historical photographs of the station, and through UConn Library's Archive and Special Collections we were able to secure photographs to be displayed in a presentation that will loop on the large Union Station display board. Design and pricing for station decorations were solicited including bunting and banners.

Social Media

In January, a suite of assets utilizing new illustration brand standards across all CTrides social media platforms (Facebook, Instagram, and Twitter) were developed and continued into February.

Also, in January and February, weekly Facebook, Instagram, and Twitter postings for CTrides, CTrail Hartford Line, CTrail Shore Line East, and CTfastrak were developed. In March, COVID-19 messaging for CTrail Hartford Line, CTrail Shore Line East, and CTfastrak were created and



CTrides: Quarter 1 Marketing Activity Summary (Continued)

January—March 2020

distributed. These messages included thank you posts to transit workers, essential travel reminders, and social distancing reminders at the stations and trains.

CTrides Materials

All print materials were digitized, posted on Flipsnack platform, and distributed to the outreach team. Also, the Spanish translation of marketing materials were completed and posted on Flipsnack. The new Transportation Leaders brochure was printed and distributed into the field. In March, the first draft of the Commuter brochure one pager handout was created and reviewed by the team.

Drive Less Connecticut

In January, a comprehensive re-evaluation of competition and event strategy was initiated, including the development of copy for employer and commuter marketing materials. A new plan for grand and weekly prizes was outlined and review and editing of communication messaging strategy for Agile Mile began.

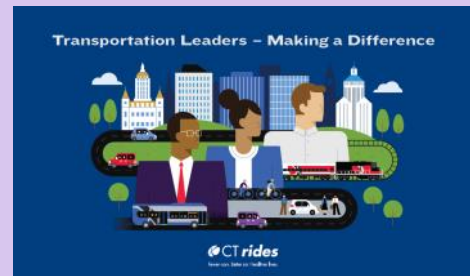
By February the development of copy for employer and commuter marketing materials continued. The communication messaging strategy for CTrides members was reviewed and edited. Social media assets for competition promotion began.

In March, the development of a promotional handout was initiated. The Drive Less Connecticut Competition page on the new website was updated to include the stats of the last two competition years. However, DLC 2020 was postponed due to the current health crisis and a supporting COVID-19 message was developed for the new website.

CTrail eTix app

We developed the application home screen image, and social media promotional messaging for launch in January.

On February 11th, a media event for the app launch was held at CTrail Hartford Line Berlin Station. The app was promoted via social media and email blast. Promotional creative for use on Ticket Vending Machine (TVM) and schedule posters was initiated.



CTrides: Quarter 1 Marketing Activity Summary (Continued)

January—March 2020

Creative Media

A final round of *CTrail* creative media assets were submitted to DOT. New telework creative concepts were also developed, presented and approved.

Telework Webinars

In March, a special webinar series on teleworking during the COVID-19 crisis was developed. *CTrides* telework experts on policy and technology were utilized to develop the first webinar in the series for March 26 on best practices and technology fundamentals.

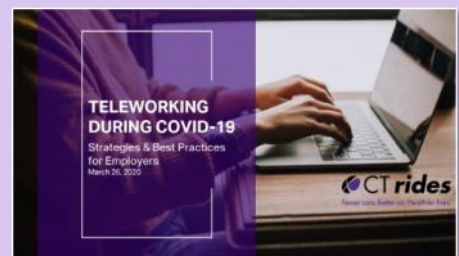
Multiple webinar platforms were researched and reviewed, and Zoom was selected. A promotional contact list from partners and opt-in enrollments was prepared.

New designs leveraging brand look and feel for promotional and media assets were created including: email blast masthead, Zoom landing page artwork, digital media ads for HBJ Morning Blend and HBJ newsletter, social media promotional assets (Facebook, Twitter, Instagram, and LinkedIn), and CTSHRM website notice.

The content for promotional communications was developed including: two email blasts (initial and reminder), Zoom meeting landing and registration pages, and a link to the webinar videos added to *CTrides.com* homepage.

Social media posts to promote webinar were developed and creation of generic telework assets were initiated for a media buy to support the webinar series. The webinar presentation template was created, and content was prepared. Follow-up surveys and thank you emails were developed and conducted.

First webinar stats include 83 registrations, 72 attendees and 13 completed surveys. Some of the feedback comments obtained were “Clear and concise. Thank you!”, “Nicely done, very informative, great job!!”, and “Look forward to more webinars on this topic”.



Participating Organization Activity

As of March 31, the total number of CTrides employer participants, stakeholders and community participants is **311**.

- Highlights:
 - 23 Road Scholar Events
 - All worksite activities halted as a result of March 20th Governor’s Executive Order for non-essential workers to stay at home Initial development of post COVID-19 strategy
 - Conducted extensive outreach with partners and stakeholders to determine status of planned activities
 - Promoted first telework webinar to partners and stakeholders
 - Filled outreach vacancy

- New Partners:
 - Honeywell
 - Pathway Lighting Inc.
 - Town of Burlington
 - U.S. Federal Highway Administration

The CTrides Outreach Team held **259 Worksite Meetings** and **127 Commuter Events** with our worksite partners during Q1. The total number of currently participating organizations is at **311**.

This quarter’s worksite activity, segmented by region, can be found on the following pages. A complete list of program organizations/stakeholders is in Appendix A.





Regional Worksite Highlights

Western CT includes Litchfield, Housatonic, Bridgeport & Stamford regions

Highlights

Road Scholar Events: Seven events - Western CT State University, UConn - Waterbury, Post University, Norwalk CC, Naugatuck Valley CC (Danbury and Waterbury), University of Bridgeport

Amazon: Met with Talent Supply Chain Coordinators to plan events for new hires at the new Stratford location. First presentation at Amazon Fulfillment Center BDL4 in Bridgeport. This was the first in a series of employee orientations, where new hires were provided CTrides information.

Post University: Held two onsite events in February to promote Carpool Try-It Day on March. Carpool Try-It Day held building on an Carpool event. Thirty-eight people expressed interest, seventeen people participated, with three indicating they changed modes.

i2Systems: Held two onsite events to promote Carpool Try-It Day on March 13th.

CTDOT/ Enterprise: Co-hosted transportation event with CTtransit and Rideshare by Enterprise. More than 20 people requested additional information on vanpooling.

Naugatuck Valley Community College: Held a meeting with Enterprise Rideshare and NVCC Waterbury and Danbury branches. Discussed the feasibility of a school-owned vanpool to provide a shuttle between the two campuses to replace the school sponsored shuttle bus.

Events

- Cartus
- Connecticut Department of Transportation

- Global Steering Systems
- Housatonic Community College
- i2Systems
- Naugatuck Valley Community College (Danbury)
- Naugatuck Valley Community College (Waterbury)
- Northwestern CT Community College
- Norwalk Community College
- Post University
- Stone Academy (Waterbury)
- UConn Waterbury
- University of Bridgeport
- Western Connecticut State University

Meetings

- Amazon Fulfillment Center BDL 4
- Bhcare
- CARTUS
- City of Norwalk
- City of Stamford
- City of Waterbury
- Connecticut Department of Transportation
- CT Department of Labor - NW and SW Business Service Teams
- Emerson-Branson
- Enterprise Rideshare
- Fairfield University
- Global Steering Systems
- HARtransit
- Hubbell Inc
- i2Systems
- Marcus Partners - Merritt 7

- Complex
- Memry Corporation
- Naugatuck Valley Community College (Danbury)
- Naugatuck Valley Community College (Waterbury)
- NBC Sports
- Northwest Hills COG
- Northwestern CT Community College
- Norwalk Community College
- Norwalk Transit
- People Friendly Stamford
- Pitney Bowes-Danbury
- Pitney Bowes-Shelton
- Pitney Bowes-Stamford
- Post University
- Sacred Heart University
- Southwest Community Health Center
- St. Vincent's Medical Center
- Stone Academy (Waterbury)
- Town of Fairfield
- UConn Stamford
- UConn Waterbury
- University of Bridgeport
- Vibrant Health
- Waterbury Gardens for Nursing and Rehabilitation
- Western Connecticut State University
- Western CT Council of Governments



Regional Worksite Highlights

Southern CT includes Middlesex, New Haven & coastal regions

Highlights

New Transportation Leaders:

Honeywell

- Initiated commuter survey with 27 responses to date
- Developed TDM plan

Pathway Lighting Inc.

- Scheduled upcoming bilingual events
- Developed TDM plan

Stone Academy: Conducted presentation to job placement professionals detailing statewide TDM services.

Road Scholar Events: Four events - University of New Haven, Three Rivers CC, Eastern CT State University, Quinebaug Valley CC

Honeywell: Held two onsite events to promote Emergency Ride Home program and began initial planning for Carpool Try-It Day.

Southern Connecticut State

University: Held planning meetings for upcoming Train Try-It Day. On hold due to coronavirus concerns from the University.

Pathways Lighting: Conducted Spanish and English in-person presentations for 30 participants.

Connecticut Water Company:

Worked with the company to require teleworkers to enroll as *CTrides* member and track their telework days.

Amazon: Conducted a presentation providing commuter information for

new hires

Try-It Days: Completed planning for Honeywell Try-It Day. Event cancelled due to COVID-19. Began planning for SCSU Try-It Day. Event suspended until the fall due to COVID-19.

Events

- 3PL Worldwide
- Alexion Pharmaceuticals
- Amazon Fulfillment Center BDL 4
- Amazon Fulfillment Center North Haven BDL-3
- American Job Center
- Branford Hall (Branford campus)
- Eastern Connecticut State University
- Honeywell
- Job Corps New Haven
- Pathway Lighting Products, Inc
- Quinebaug Valley Community College
- Stone Academy (West Haven)
- Three Rivers Community College
- University of New Haven

Meetings

- 3PL Worldwide
- Albertus Magnus
- Alexion Pharmaceuticals
- Amazon Fulfillment Center BDL3
- Amazon Fulfillment Center North Haven BDL-3

- Amazon Sorting Center Wallingford BDL-5
- American Job Center
- Branford Hall (Branford campus)
- City of New Haven
- Connecticut Water
- East River Energy
- Eastern Connecticut State University
- Electric Boat
- goNHgo
- Honeywell
- Job Corps New Haven
- Mitchell College
- Pathway Lighting Products, Inc
- Quinebaug Valley Community College
- Quinebaug Valley Community College Willimantic Center
- Quinnipiac University
- South Central CT Regional Water Authority
- Southeast Area Transit
- Southern Connecticut State University
- Stone Academy (West Haven)
- The Kennedy Center, Inc, Woodbridge
- Three Rivers Community College
- Town of North Branford
- Town of Old Saybrook
- UConn Avery Point Campus
- University of New Haven
- Yale University



Regional Worksite Highlights

Eastern CT includes the Hartford, North and Central regions of Connecticut

Highlights

New Transportation Leader

Member: Town of Burlington

Road Scholar Events: Ten events—UConn, Tunxis CC, Goodwin College, Albertus Magnus College, Asnuntuck CC, Manchester CC, Central CT State University, Trinity College, University of Hartford, Capital CC

People’s United Bank: Assisted relocated employees from Hartford to Bridgeport with new transportation options

Town of Burlington: Partnered with DOT and the town to develop and implement survey to gauge interest in extension of CTtransit 909 Express Bus service

Shipman and Goodwin: Survey issued and first onsite events planned for a Bus Try-It Day to be held at the end of March.

Office of the State Comptroller: Completed Bus Try-It Day with Hartford Express buses (923, 904). Eight new riders, seven indicated they will use the mode again.

Federal Highway Administration: Provided relocation services for move to Hartford from Glastonbury. Services include custom commute plans and information on ridematching tool. Additional onsite events planned to familiarize staff with transit options prior to their Summer/Fall '20 move.

Town of Burlington/Express Bus Project: Conducted a resident survey regarding new express service to Hartford. Received 70 responses.

The Hartford Enhanced Mode Shift Program: Held planning meeting to outline first phase of enhanced mode shift program post COVID-19

Connecticut Innovations Relocation Assistance: Continued work with company on planned relocation from Rocky Hill to New Haven

Events

- Albertus Magnus, East Hartford
- Asnuntuck Community College
- Avon Health Center
- Branford Hall (Southington campus)
- Capital Community College
- Center for Latino Progress
- Central CT State University
- Connecticare
- Connecticut Department of Energy and Environmental Protection (New Britain)
- Connecticut Spring and Stamping
- Conning Inc
- Goodwin College
- Hartford Adult Education Center
- Horizon Services Company
- Jackson Laboratory
- Manchester Community College
- Office of the State Comptroller
- Pierce Care
- Porter and Chester Institute (Enfield)
- Randstad
- Shipman & Goodwin
- Town of Burlington
- Town of East Hartford
- Town of Farmington
- Trinity College
- Triumph
- Tunxis Community College
- UConn Health Center
- UConn Storrs

- United Bank
- United Technologies Aerospace
- University of Hartford
- University of St. Joseph School of Pharmacy
- USI Consulting Group
- Vernon Public Schools
- Voya
- Wesleyan University
- West Hartford Health and Rehab
- Windham Regional Community Council

Meetings

- Aetna
- Asnuntuck Community College
- Avon Health Center
- Branford Hall (Southington campus)
- C&S Wholesale Groceries
- Cabelas
- Capital Community College
- Center for Latino Progress
- Central CT State University
- Charter Oak Health Center
- Cigna
- City of Hartford
- Connecticare
- Connecticut Children's Medical Center
- Connecticut Department of Developmental Services
- Connecticut Department of Energy and Environmental Protection (Hartford)



Regional Worksite Highlights

Meetings (continued)

- Connecticut Department of Energy and Environmental Protection (New Britain)
- Connecticut Department of Labor
- Connecticut Economic Resource Center
- Connecticut Green Bank
- Connecticut Innovations
- Connecticut Science Center
- Connecticut Spring and Stamping
- Conning Inc
- Crestfield Rehabilitation Center & Fenwood Manor
- Cyient
- Department of Public Health (Hartford)
- Department of Social Services (Hartford)
- Freemont Group LLC
- Goodwin College
- Hartford Adult Education Center
- Horizon Services Company
- Jackson Laboratory
- Job Corps (Hartford)
- Manchester Community College
- Newington Rapid Recovery Rehab Center
- Office of the Attorney General
- Office of the State Comptroller
- Pierce Care
- Pitney-Bowes Hartford
- Porter and Chester Institute (Enfield)
- Pratt and Whitney
- Randstad
- Rich Product Corporation
- Shipman & Goodwin
- Sikorsky Aircraft Corporation – Stratford
- The Hartford
- Touchpoint at Manchester
- Town of Burlington
- Town of East Hartford
- Town of Farmington
- Town of Manchester
- Travelers
- Trinity College
- Triumph
- Tunxis Community College
- U.S. Federal Highway Administration
- UConn Hartford
- UConn Health Center
- UConn Law School
- United Bank
- University of Connecticut (Storrs)
- University of Hartford
- University of Saint Joseph
- University of St. Joseph School of Pharmacy
- USI Consulting Group
- Vernon Public Schools
- Veterans Affairs Connecticut Healthcare System (Newington)
- Voya
- Wesleyan University
- West Hartford Health and Rehab
- Windham Regional Community Council
- Windsor Health and Rehabilitation Center, LLC
- World Class Distribution (Trader Joes)
- Town of Farmington
- Town of Manchester
- Travelers
- Trinity College
- Triumph
- Tunxis Community College
- UConn Hartford
- UConn Health Center
- UConn Law School
- UConn Storrs
- United Bank
- University of Hartford
- USI Consulting Group
- Vernon Public Schools
- Voya
- West Hartford Health and Rehab
- Windham Regional Community Council
- Windsor Health and Rehabilitation, LLC
- World Class Distribution Center

Customer feedback:

- *“Michele was very helpful and took the time to provide me with answers and follow up website to review. My computer actually froze at the end of the conversation but I had all the information I requested at that point.”*
- *“Paola anticipated my questions before I could ask them! Outstanding service.”*
- *“Great service, great train. I just wish there more trains and people riding. Cindy was a great help!! Cindy was helpful and quick to respond. Excellent and quick help.”*
- *“Fast, detailed and professional response with helpful hints. Many thanks!”*
- *“I so appreciate the time you have taken to explain on detail my best travel options. Have A Blessed Year”*
- *Very professional customer service reps enjoyed speaking with them”*

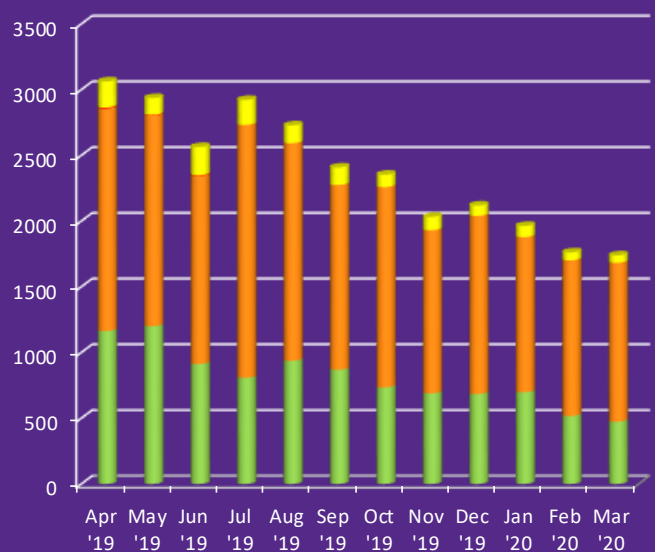
Customer Service Highlights

Number of Calls (AECOM): 3,575
 Number of Calls (Advance): 3,263
 Custom Commute Plans: 53
 Total Number of Website Form Submissions: 383
 Total Number of Emails Sent and Received: 1,713

Customer Service Details:

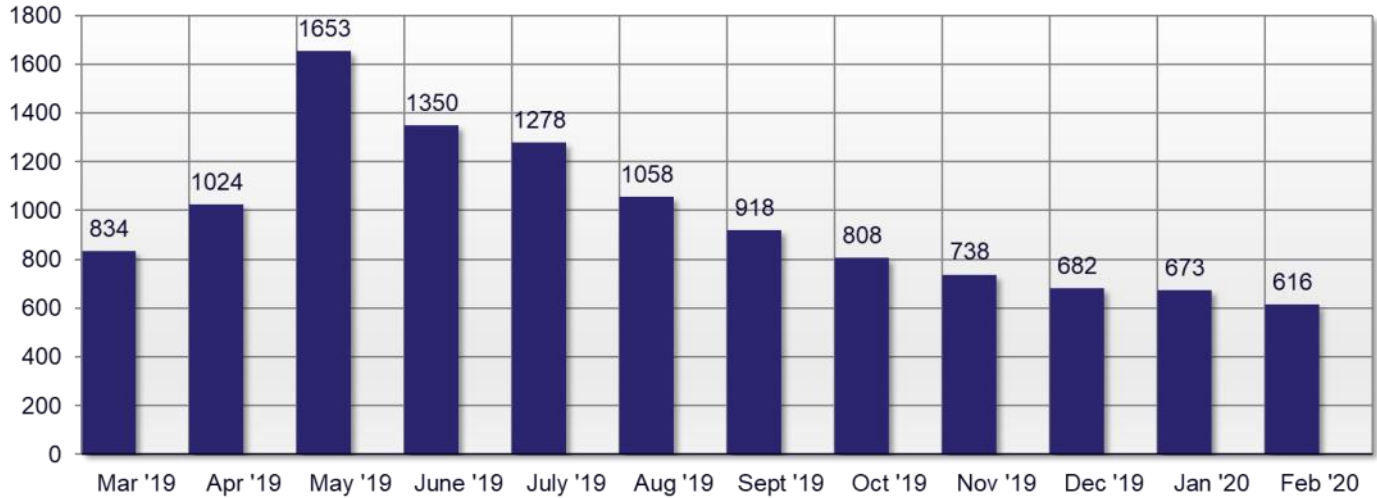
- **5,488 Total** cases into CTrides
 - * **3,575 calls**
8 inquiries about available disabled services
3 bilingual inquiries
 - * **Sent and received 1,689 emails**
Great or OK rating on 89% of emails surveyed
 - * **Facilitated 200 live online chats of which 38 were SMS (text) chats**
4.54 out of 5 (best) avg. rating on all chats
- **Provided 10 Emergency Rides Home** to 6 vanpoolers, and 1 CTrail Shore Line East rider, 2 carpoolers, and 1 bicyclist
- **Processed 219 Hartford Line and 46 Shore Line East** complaints, suggestions, questions
- **Distributed 8 trial bus passes to commuters** meeting the program’s Trial Ride criteria. A follow-up survey for the quarter tallied 2 responses.

1st Quarter 2020



▶ **3,575— Inbound Calls** ▶ **200 — Online Chats**
 ▶ **1,689— Emails**

Number of Participants



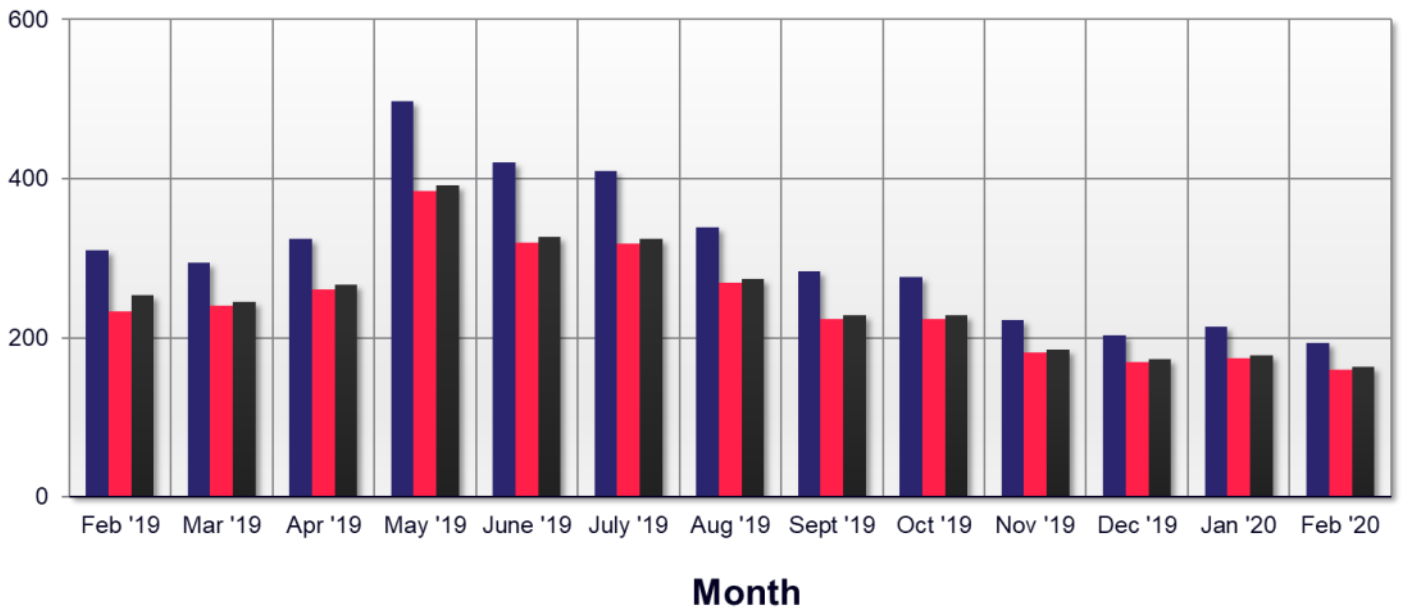
Participants:

The number of people who have recorded at least one trip during specified time period.

Month-over-Month Key Statistics (Through February, 2020)

Month Over Month

■ SOV Eliminated (x100) ■ Emissions Eliminated (tons) ■ Gallons of Gas Saved (x100)



As of Q1 2020, there are more than 300 businesses, agencies and municipalities working with CTrides

1. 3PL Worldwide
2. 9Town Transit
3. Advance Auto Parts
4. Advanced Behavioral Health
5. AECOM
6. Aetna
7. Albea
8. Albertus Magnus
9. Albertus Magnus (East Hartford)
10. Alexion Pharmaceuticals
11. All Our Kin
12. Amazon Fulfillment Center BDL-2
13. Amazon Fulfillment Center BDL-5
14. Amazon Sorting Center Wallingford
15. American Institute
16. Aptar Group
17. ARC of Litchfield County
18. Artspace New Haven
19. ASML, Inc.
20. Asnuntuck Community College
21. Avon Health Center
22. Becton Dickinson and Company
23. BHcare
24. Bigelow Tea
25. BikewalkCT
26. BLT Office (Norwalk)
27. BLT Office (Stamford)
28. Bradley Airport
29. Branford Hall (Branford)
30. Branford Hall (Southington)
31. Bridgeport Public Schools
32. Cabelas
33. Capital Community College
34. CARTUS
35. CDM Smith
36. Center for Latino Progress
37. Central Connecticut Chambers of Commerce
38. Central Connecticut Coast YMCA
39. Central CT State University
40. Chabaso Bakery, Inc.
41. Cigna
42. City of Bridgeport
43. City of Danbury
44. City of Meriden
45. City of New Britain
46. City of New Haven
47. City of Stamford
48. City of Waterbury
49. City of Waterbury - Public Health
50. Community Health Center of New London
51. Connecticare
52. Connecticut Children's Medical Center
53. Connecticut College
54. Connecticut Department of Developmental Services
55. Connecticut Department of Energy and Environmental Protection (Hartford)
56. Connecticut Department of Energy and Environmental Protection (New Britain)
57. Connecticut Department of Labor
58. Connecticut Department of Transportation
59. Connecticut Department of Veterans Affairs
60. Connecticut Green Bank
61. Connecticut Innovations
62. Connecticut Mental Health Center
63. Connecticut National Guard
64. Connecticut Probate Court
65. Connecticut Spring and Stamping
66. Connecticut State Insurance Department
67. Connecticut Valley Hospital
68. Connecticut Valley Industries
69. Connecticut Water
70. Conning, Inc.
71. Continuum of Care Inc.
72. CT Department of Labor
73. CTtransit
74. CTfastrak
75. Datto, Inc.
76. Department of Administrative Services
77. Department of Economic and Community Development
78. Department of Emergency Services & Public Protection
79. Department of Public Health (Hartford)
80. Department of Rehabilitation Services
81. Department of Revenue Services
82. Department of Social Services (Hartford)
83. Diageo, Inc.
84. DRS
85. East River Energy
86. Eastern Account System, Inc.
87. Eastern Connecticut State University
88. Eastern Connecticut Transportation Consortium
89. Eastern Workforce Investment Board
90. Electric Boat
91. Empire State Realty Trust
92. Enterprise Holdings
93. Enterprise Rideshare
94. ESPN
95. Essex Steam Train and Riverboat

96. ExecutNet
97. Fairfield University
98. Foxwoods Resort and Casino
99. FTD Florists
100. Fusco Corporation
101. From You Flowers
102. Gateway Community College
103. Gaylord Specialty Healthcare
104. Global Steering Systems
105. GoNHGO
106. Goodwill of Western & Northern CT
107. Goodwin College
108. Greater Bridgeport Transit
109. Greater Norwalk Chamber of Commerce
110. Greater Waterbury YMCA
111. Greenwich Board of Education
112. Greenwich Chamber of Commerce
113. Group CBS Circuit Breaker Sales
114. Hartford Adult Education Center
115. Hartford Foundation for Public Giving
116. Hartford HealthCare System Support Office
117. Hartford Hospital
118. Hartford Public Library
119. Hartford Steam Boiler
120. HARTransit
121. Henkel Corporation
122. Hispanic Advisory Council of Greater Stamford (HACGS)
123. Hologic
124. Honeywell
125. Hotchkiss School
126. Horizon Services Company
127. Homegoods Distribution
128. Homes For the Brave
129. Hospital for Special Care
130. Housatonic Community College
131. Hubbell Incorporated
132. Human Resource Leadership Association of Eastern CT
133. i2systems
134. IFG Companies (Guilford Specialty Group)
135. Inertia Dynamics Corporation
136. Innovate Stamford
137. IRS
138. Jackson Laboratory
139. JCC of Greater New Haven
140. Jewett City Savings Bank
141. Job Corps (Hartford)
142. Job Corps New Haven
143. Jones Lang Lasalle Americas
144. Key Bank - New Haven
145. Knights of Columbus
146. Konica Minolta Business Solutions
147. Law offices of John Andreini
148. Lawrence + Memorial Hospital
149. Lincoln Life Insurance/Freemont Group Management
150. Live Green CT
151. Lower Connecticut River Valley Council of Governments
152. Manchester Community College
153. Manufacturing Alliance Service Corporation
154. Marcus Partners Mgmt.
155. Mary Wade Home
156. MassMutual
157. MedSource Consultants
158. Medtronic
159. Middlesex Community College
160. Middlesex Community College - Meriden Campus
161. Middlesex Hospital
162. Middlesex Hospital Shoreline Medical Center
163. Middletown Area Transit
164. Milford Transit District
165. Mitchell College
166. Mohegan Sun Casino
167. Mystic Healthcare and Rehabilitation LLC
168. Mystic Marriott Hotel & Spa
169. Nalas Engineering
170. Naugatuck Valley Community College (Danbury)
171. Naugatuck Valley Community College (Waterbury)
172. Naugatuck Valley Council of Governments
173. Naval Submarine Base New London
174. New Britain CT Works Center
175. New Britain Downtown District
176. New Haven Coalition for Active Transportation
177. New Haven Mayor's Task Force on Bike Education
178. North East Transportation Co.
179. Northwest Hills COG
180. Northwestern CT Community College
181. Norwalk Community College
182. Norwalk Housing Authority
183. Norwalk Transit
184. Nucor Steel (Wallingford)
185. NWCC Center for Workforce Development
186. Office of Policy and Management
187. Office of the Attorney General
188. Office of the Secretary of the State
189. Office of the State Comptroller
190. Oracle Corporation
191. Paier College of Art
192. Paradigm Property Management
193. Pathway Lighting Inc.
194. Pelli Clarke Pelli Architects
195. People Friendly Stamford
196. People's United Bank

- | | | |
|--|---|---|
| 197. PEP - Lacey Manufacturing | Governments | 260. Town of Greenwich |
| 198. Pierce Care | 228. Southeast Area Transit | 261. Town of Trumbull |
| 199. Pitney Bowes-Danbury | 229. Southeastern Connecticut Council of | 262. Town of Windsor |
| 200. Pitney Bowes-Shelton | Governments | 263. Town of Woodbridge |
| 201. Porter & Chester Institute (Branford) | 230. Southern Connecticut State | 264. Travelers |
| 202. Porter and Chester Institute (Enfield) | University | 265. Trinity College |
| 203. Porter and Chester Institute
(Stratford) | 231. Southwest Community Health Cen-
ter | 266. Triumph |
| 204. Porter and Chester Institute
(Waterbury) | 232. St. Mary's Hospital | 267. TSKP Studios |
| 205. Pratt & Whitney - Middletown | 233. St. Vincent's College | 268. Tunxis Community College |
| 206. Pratt and Whitney | 234. St. Vincent's Medical Center | 269. U.S. Department of Housing and
Urban Development |
| 207. Prudential (Hartford) | 235. Stamford Chamber of Commerce | 270. UConn Hartford |
| 208. Quinebaug Valley CC | 236. Stamford Downtown Special Ser-
vices District (SDSSD) | 271. UConn Health Center |
| 209. Quinnipiac University | 237. Stanley Black & Decker | 272. UConn Law School |
| 210. Quinnipiac University - North Haven
Campus | 238. State Education Resource Center | 273. Ulbrich Stainless Steels and Special
Metals |
| 211. Radiall USA Inc. | 239. State of Connecticut | 274. United Bank |
| 212. Randstad | 240. Stone Academy (East Hartford) | 275. United Healthcare |
| 213. Reckson/SL Green | 241. Stone Academy (Waterbury) | 276. United Illuminating |
| 214. Regal Care | 242. Stone Academy (West Haven) | 277. United States District Court: District
of Connecticut |
| 215. RGIS | 243. Sun Life Financial | 278. United Technologies Corporation |
| 216. Rich Product Corporation | 244. Tauck Tours | 279. University of Bridgeport |
| 217. Saint Francis Hospital | 245. The Business Council of Fairfield
County | 280. University of Connecticut—Avery
Point |
| 218. Saybrook Point | 246. The Hartford | 281. University of Connecticut—Storrs |
| 219. Sea Corp | 247. The Independence Center | 282. University of Connecticut—Stamford |
| 220. SeeClickFix | 248. The Kennedy Center, Inc. | 283. University of Connecticut—
Waterbury |
| 221. Shipman & Goodwin | 249. The Watermark at 3030 Park | 284. University of Hartford |
| 222. Siemon Company | 250. The Workplace | 285. University of New Haven |
| 223. Sikorsky Aircraft Corporation—
Bridgeport | 251. Three Rivers Community College | 286. University of Saint Joseph |
| 224. Sikorsky Aircraft Corporation—
Shelton | 252. Thule Inc | 287. University of St. Joseph School of
Pharmacy |
| 225. Sikorsky Aircraft Corporation—
Stratford | 253. Tower Labs Ltd. | 288. USI Consulting |
| 226. Society for Human Resource Man-
agement | 254. Town Green Special Services District | 289. U.S. Federal Highway Administration |
| 227. South Central Regional Council of | 255. Town of Branford | 290. Valley Transit District |
| | 256. Town of Burlington | 291. Veterans Affairs Connecticut |
| | 257. Town of East Hartford | |
| | 258. Town of Fairfield | |
| | 259. Town of Farmington | |

- Healthcare System (Newington)
- 292. Veterans Affairs Connecticut
Healthcare System (West Haven)
- 293. Voya
- 294. Washington Inventory Systems
- 295. Waste Management
- 296. Watch For Me CT
- 297. Waterbury Hospital
- 298. Watson Foods
- 299. Wesleyan University
- 300. West Hartford Health and Rehab
- 301. Western Connecticut State
University
- 302. Western CT Council of Governments
- 303. Wiggin & Dana, LLP
- 304. Windham Region Transit District
- 305. Windham Regional Community
Council
- 306. Windsor Health and Rehabilitation
Center, LLC
- 307. Wiremold/Legrand
- 308. Workers' Compensation
Commission
- 309. Yale University
- 310. Yale-New Haven Hospital
- 311. YMCA Greater Hartford