

**To:** Cost Review Sub-Committee  
**From:** Sotoria Montanari, CRCOG Program Manager  
**Date:** April 16, 2021  
**c:** Transportation Committee  
Rob Aloise, CRCOG Director of Planning  
Cara Radzins, Transportation Deputy Director  
Karen Isherwood, P.E., Town Engineer, Suffield

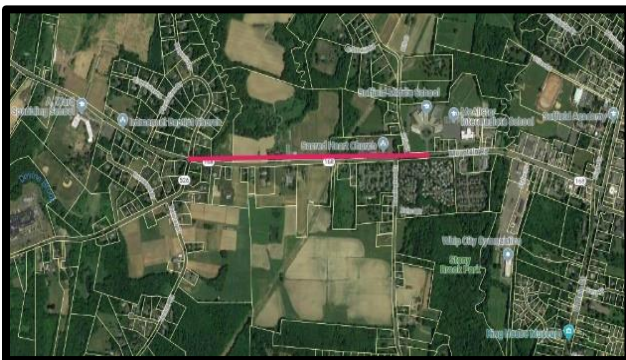
**Subject:** LOTCIP Funding Increase – Suffield Mountain Road Multi-Use Trail

A Cost Review Sub-Committee meeting will take place at 11 AM on Monday, April 26, 2021. At the meeting, we will be discussing and acting on the following:

**Suffield Mountain Road (State Route 168) Multi-Use Trail Project (L139-0002)**

The Town of Suffield is requesting a LOTCIP funding increase of \$184,400 from \$745,600 to \$930,000 (24.7% increase) based on the most recent engineering estimate. The project was approved as a Multi-Use Trail project under the 2015 Solicitation and is currently in the final design phase.

The funding increase is to address feedback and safety concerns from CTDOT Traffic and District Units' reviews regarding the installation of two (2) additional Rectangular Rapid Flashing Beacons (RRFB) at \$25,000, making for a total of six (6) RRFB's located in the project.



Additionally, the inclusion of a Traffic person (Municipal Police Officer) for the duration of the four (4) month project in the amount of \$51,200 was not previously included in the cost estimate. An increase in the quantity of earth excavation and clearing and grubbing, for \$49,840 was added to account for unsuitable soil beneath the trail.

The additional funding also includes increased unit costs for the three-rail wood fence at \$15,900, HMA at \$26,200 and a variety of other minor unit cost increases. The additional costs combined with increases to percentage based estimating items (such as minor items, inflation, contingencies) resulted in the total estimated cost increase of \$184,400.



*The new multi-use trail would begin to the west of the Suffield Middle School driveway.*

To incorporate CTDOT District and Traffic Unit recommendations for additional safety measures and to account for the traffic person, earth excavation and associated increased unit costs, staff recommends committee approval of an additional \$184,400 of LOTCIP funding for the Suffield Mountain Road (State Route 168) Multi- Use Trail (L139-0002) project, increasing the funding approval from \$745,600 to \$930,000.