

# Capitol Region Transportation Improvement Program FFY2021-2024



**Draft: September 10, 2020**

**To Be Considered for Adoption: October 28, 2020**

## ***Table of Contents***

<b>Introduction .....</b>	<b>2</b>
What is the TIP? .....	2
What is CRCOG? .....	2
What is the MPO? .....	2
Contact Information .....	3
<b>Resolution: Endorsement of the TIP .....</b>	<b>4</b>
<b>Resolution: Conformity with the Clean Air Act (Ozone) .....</b>	<b>5</b>
<b>Resolution: Annual Urban Planning Certification .....</b>	<b>6</b>
<b>Public Participation Process .....</b>	<b>7</b>
“Project Level” Public Involvement Process .....	7
“Program Level” Public Involvement Process (for the TIP).....	8
Key Public Involvement Events for the TIP .....	9
<b>Financial Summary .....</b>	<b>10</b>
<b>Funding Program Descriptions.....</b>	<b>12</b>
Federal Funding .....	12
State Funding .....	19
Local Funding.....	20
<b>How to Read Project Listings.....</b>	<b>21</b>
Program Funding Codes .....	22
<b>Section A: List of Projects to Be Funded (by funding program).....</b>	<b>24</b>
<b>Section B: Air Quality Conformity Analysis Summary .....</b>	<b>49</b>
<b>Section C: Capitol Region Bridge Projects.....</b>	<b>51</b>
<b>Section D: Capitol Region Safety Projects .....</b>	<b>57</b>
<b>Section E: List of Projects to Be Funded (by Town, District, or Statewide).....</b>	<b>61</b>
<b>Section F: Performance Targets .....</b>	<b>77</b>
Highway Safety .....	78
Pavement and Bridge Condition.....	78
System Reliability .....	79
Freight Movement .....	80
Air Quality .....	81
Transit .....	81

## ***Introduction***

### **What is the TIP?**

The Transportation Improvement Program (TIP) is the list of all federally funded transportation projects in the Capitol Region. The projects included in this list are all scheduled to receive federal transportation funds within the *next four years*. The TIP is prepared at least every four years but is amended frequently.

Approval by the Capitol Region Council of Governments (CRCOG) is required before any federal funds can be expended on any transportation project in the Capitol Region. This project review and approval role is one bestowed on CRCOG by federal regulations. The regulations specifically provide regional agencies like CRCOG the opportunity to cooperate with their state department of transportation in decisions regarding how federal transportation funds are spent in their region. The approval of both agencies (state and regional) is required for projects to be funded.

### **What is CRCOG?**

The Capitol Region Council of Governments is a voluntary association of municipal governments in the Hartford area. The Council was organized to provide towns the opportunity to cooperatively address issues of mutual concern. Many of CRCOG's programs are directed to providing technical services to individual towns and to helping towns share services that cannot be efficiently provided by individual towns. For example, CRCOG administers a regional cooperative purchasing program for items like gasoline and fuel oil. CRCOG also serves as a forum for local elected officials to discuss municipal and regional issues such as transportation planning, solid waste disposal, watershed planning, regional economic planning, regional emergency management planning, state-imposed mandates for municipalities, and state funding for municipalities.

CRCOG is governed by a Policy Board that is comprised of the chief elected official from its 38 member municipalities. The City of Hartford is allowed three representatives and three votes. The Policy Board is advised by CRCOG staff as well as a special Transportation Committee. CRCOG's Transportation Committee is composed of representatives from member towns, the Greater Hartford Transit District, and the Connecticut Coalition for Environmental and Economic Justice. The Committee meets regularly to consider transportation matters.

### **What is the MPO?**

In every urbanized area in the United States, a Metropolitan Planning Organization (MPO) is designated to conduct regional transportation planning and to select federally funded projects. This MPO system was established by the federal government to give people who are affected by transportation decisions a say in how those decisions are made. Although the State Department of Transportation has the primary role of administering the expenditure of these funds, all federally funded transportation projects in the Region must be approved by the MPO.

CRCOG's Policy Board is the designated MPO for 38 municipalities in the Capitol Region. As such, the Chief Elected Officials of those municipalities, listed below, will solicit public input on the projects listed in this draft document. Comment will be incorporated into the document, and the MPO will subsequently consider approval of the projects listed in this document at its meeting on October 28, 2020. Please see a summary of opportunities to comment on this draft document beginning on page 7.

The following towns are members of the Capitol Region MPO:

Andover	East Windsor	Marlborough	Stafford
Avon	Ellington	New Britain	Tolland
Berlin	Enfield	Newington	Vernon
Bloomfield	Farmington	Plainville	West Hartford
Bolton	Glastonbury	Rocky Hill	Wethersfield
Canton	Granby	Simsbury	Willington
Columbia	Hartford	Somers	Windsor
Coventry	Hebron	South Windsor	Windsor Locks
East Granby	Manchester	Southington	
East Hartford	Mansfield	Suffield	

In addition to the towns listed above, the Connecticut Department of Transportation (CTDOT) and the Greater Hartford Transit District (GHTD) each have one member on the Capitol Region MPO to represent transit operators in the Region.

### **Contact Information**

Questions regarding this document or any of the projects listed herein can be directed to:

MAIL:	Capitol Region Council of Governments 241 Main Street, Hartford, CT 06106
EMAIL:	<a href="mailto:esnowden@crcog.org">esnowden@crcog.org</a>
PHONE:	860-522-2217 x4217
FAX:	860-724-1274
CONTACT:	Erik Snowden, GIS Coordinator



## ***Resolution: Endorsement of the TIP***



241 Main Street / Hartford / Connecticut / 06106  
Phone (860) 522-2217 / Fax (860) 724-1274  
[www.crcog.org](http://www.crcog.org)

### **Resolution Endorsing the FFY2021-2024 Transportation Improvement Program (TIP)**

**WHEREAS**, the Capitol Region Council of Governments (CRCOG) has been designated as the Metropolitan Planning Organization (MPO) for the Capitol Region, and

**WHEREAS**, the metropolitan planning regulations issued by the Federal Transit Administration (FTA) and the Federal Highway Administration (FHWA) require a multi-year Transportation Improvement Program (TIP), and

**WHEREAS**, the metropolitan planning regulations require that transportation improvement projects be included in the regional TIP as a condition of eligibility for federal funding assistance,

**WHEREAS**, citizens of the Region were provided an opportunity to comment on the draft FY2021-2024 TIP for a minimum of 30 days, from September 11-October 12, 2020 and also at public information meetings on September 30, 2020 (1pm and 7pm); and notice of the meetings was given in newspapers and in town clerks offices, and posted on the CRCOG website;

**NOW, THEREFORE, BE IT RESOLVED**, that the CRCOG Policy Board endorses the full four-year (FY2021-2024) program of the Capitol Region Transportation Improvement Program.

#### **CERTIFICATE**

I certify the above is a true copy of a resolution adopted by the Policy Board at its meeting held on October 28, 2020.

BY: \_\_\_\_\_ DATE: \_\_\_\_\_  
Lori L. Spielman, Secretary

Andover / Avon / Berlin / Bloomfield / Bolton / Canton / Columbia / Coventry / East Granby / East Hartford / East Windsor / Ellington / Enfield / Farmington  
Glastonbury / Granby / Hartford / Hebron / Manchester / Marlborough / Mansfield / New Britain / Newington / Plainville / Rocky Hill / Simsbury / Somers  
South Windsor / Southington / Stafford / Suffield / Tolland / Vernon / West Hartford / Wethersfield / Willington / Windsor / Windsor Locks

*A voluntary Council of Governments formed to initiate and implement regional programs of benefit to the towns and the region*

## ***Resolution: Conformity with the Clean Air Act (Ozone)***



241 Main Street / Hartford / Connecticut / 06106  
Phone (860) 522-2217 / Fax (860) 724-1274  
[www.crcog.org](http://www.crcog.org)

### **Resolution – Conformity with the Clean Air Act (Ozone)**

**WHEREAS**, the Capitol Region Council of Governments (CRCOG) is required to submit an Air Quality Conformity Statement to the US Federal Highway Administration (FHWA) and to the US Environmental Protection Agency (EPA) in accordance with the final conformity rule promulgated by EPA (40 CFR 51 and 93) when adopting an annual Transportation Improvement Program (TIP) or when effecting a significant revision of the Metropolitan Transportation Plan (MTP); and

**WHEREAS**, Title 42, Section 7506 (3) (A) states that conformity of transportation plans and programs will be demonstrated if:

1. the plans and programs are consistent with recent estimates of mobile source emissions;
2. the plans and programs provide for the expeditious implementation of certain transportation control measures;
3. the plans and programs contribute to annual emissions reductions consistent with the Clean Air Act of 1977, as amended; and

**WHEREAS**, it is the opinion of the CRCOG that the plans and programs approved today, (October 28, 2020) and submitted to FHWA and EPA conform to the requirements of Title 42, Section 7506 (3) (A) as interpreted by EPA (40 CFR 51 and 93); and

**WHEREAS**, the State of Connecticut has elected to assess conformity in the Connecticut portion of the New York-Northern New Jersey-Long Island, NY-NJ-CT Ozone Nonattainment area (Fairfield, New Haven and Middlesex Counties) and the Connecticut Department of Transportation has jointly assessed the impact of all transportation plans and programs in this Nonattainment area (Ozone and PM2.5 Air Quality Conformity Determination April 2020); and

**WHEREAS**, the Connecticut Department of Transportation's assessment (above) has found that plans and programs jointly meet mobile source emission's guidelines advanced by EPA pursuant to Section 7506 (3) (A),

**NOW THEREFORE BE IT RESOLVED THAT** the Capitol Region Council of Governments finds that the 2019-2045 MTP and the FFY2021-2024 TIP and all Amendments conform to air quality requirements of the U.S. Environmental Protection Administration (40 CFR 51 and 93), related U.S. Department of Transportation guidelines (23 CFR 450) and with Title 42, Section 7506 (3) (A) and hereby approves the existing Ozone and PM2.5 Air Quality Conformity Determination, dated April 2020, contingent upon no major adverse comments are received during said period.

#### **CERTIFICATE**

I certify the above is a true copy of a resolution adopted by the Policy Board at its meeting held on October 28, 2020.

BY: \_\_\_\_\_  
Lori L. Spielman, Secretary

DATE: \_\_\_\_\_

Andover / Avon / Berlin / Bloomfield / Bolton / Canton / Columbia / Coventry / East Granby / East Hartford / East Windsor / Ellington / Enfield / Farmington  
Glastonbury / Granby / Hartford / Hebron / Manchester / Marlborough / Mansfield / New Britain / Newington / Plainville / Rocky Hill / Simsbury / Somers  
South Windsor / Southington / Stafford / Suffield / Tolland / Vernon / West Hartford / Wethersfield / Willington / Windsor / Windsor Locks

*A voluntary Council of Governments formed to initiate and implement regional programs of benefit to the towns and the region*

## **Resolution: Annual Urban Planning Certification**



241 Main Street / Hartford / Connecticut / 06106  
Phone (860) 522-2217 / Fax (860) 724-1274  
[www.crcog.org](http://www.crcog.org)

### **Resolution**

#### **Annual Urban Planning Certification**

**WHEREAS**, the Capitol Region Council of Governments (CRCOG) has been designated as the Metropolitan Planning Organization (MPO) for the Capitol Region,

**NOW THEREFORE BE IT RESOLVED**, that the CRCOG Policy Board certifies that the urban transportation planning process has been conducted in accordance with the terms and provisions of 23 U.S.C. 134, 49 U.S.C. 5303, and the metropolitan planning regulations at 23 CFR 450 (dated October 1, 2012) and that all applicable provisions relative to the involvement of public and private providers of mass transit, Civil Rights, involvement of minority business enterprises, special efforts for elderly and disabled persons, the Clean Air Act, 23 USC and 49 USC, and 23 CFR 450.334(a) have been satisfied.

Dates of adoption of key planning documents:

- FY2020-2021 Unified Planning Work Program (UPWP): May 22, 2019
- 2045 Capitol Region Metropolitan Transportation Plan (MTP): April 3, 2019
- FFY2021-2024 Transportation Improvement Program (TIP): October 28, 2020

#### **CERTIFICATE**

I certify the above is a true copy of a resolution adopted by the Policy Board at its meeting held on October 28, 2020.

BY: \_\_\_\_\_  
Lori L. Spielman, Secretary

DATE: \_\_\_\_\_

Andover / Avon / Berlin / Bloomfield / Bolton / Canton / Columbia / Coventry / East Granby / East Hartford / East Windsor / Ellington / Enfield / Farmington  
Glastonbury / Granby / Hartford / Hebron / Manchester / Marlborough / Mansfield / New Britain / Newington / Plainville / Rocky Hill / Simsbury / Somers  
South Windsor / Southington / Stafford / Suffield / Tolland / Vernon / West Hartford / Wethersfield / Willington / Windsor / Windsor Locks

*A voluntary Council of Governments formed to initiate and implement regional programs of benefit to the towns and the region*

## ***Public Participation Process***

CRCOG's public involvement policy requires public review of individual projects before they are submitted for consideration in the TIP. This process of extensive public involvement at the individual project level provides the opportunity for residents and businesses to find out about a project, offer comments, and in many cases, help define the scope of the project. The "project level" process is supplemented with a second "program level" public involvement procedure that occurs with the adoption of the TIP or more frequently if major amendments are required during the year.

### **"Project Level" Public Involvement Process**

CRCOG's and CTDOT's public involvement requirements for individual projects are mutually supportive. Both agencies typically require that a formal public information meeting be held before a project is approved for inclusion in the TIP and before design activities can begin. The requirements have proven extremely effective at giving members of the public an opportunity for early participation in project planning. As a result of these early meetings, many projects have been substantially changed in scope. Some have even been cancelled due to early opposition. The process is focused on a public information meeting that is held after a project concept is defined in enough detail that *conceptual* plans can be prepared at a scale of 1 inch = 100 feet. The meeting is held before formal design activities commence so there is ample opportunity during the design process to address concerns expressed at the public information meeting.<sup>1</sup> The basic requirements of the process are listed below.

- The meeting must be advertised in a local newspaper 10-15 days in advance of the public meeting.
- News releases must be sent to the news media 10-15 days in advance of the public meeting.
- Meeting notices must be mailed directly to residents and businesses that abut the project.
- The public information meeting must be held at a convenient time and place.
- Town officials are typically responsible for convening the meetings on projects in the STP-Block Grant program, the Local Transportation Capital Improvement Program (LOTICIP), or in any other program if they are the project sponsor. (The sponsor is the agency that requested funding through CRCOG or CTDOT.)
- CTDOT officials are responsible for convening meetings on most other projects.
- Public information meetings are not required on certain types of projects such as planning studies, maintenance projects, and annual transit operating assistance.
- Major projects (such as freeway widenings) are preceded by extensive planning & environmental studies that include much more public involvement than is described above.

---

<sup>1</sup> In some cases, several public meetings are held until a project scope can be developed that is acceptable to residents, businesses, and local officials.

### **“Program Level” Public Involvement Process (for the TIP)**

CRCOG has a Public Participation Plan that guides the public involvement process for MPO transportation planning activities, including the adoption of the TIP and any major amendments to the TIP. Based on the requirements and best practices outlined in the Public Participation Plan, CRCOG will conduct the following public outreach activities:

- CRCOG will provide at least a 30-day public comment period prior to the adoption of a TIP or major TIP amendment.
- CRCOG will make the draft TIP available on its website and hardcopies will be made available upon request.
- CRCOG will hold a public meeting during the 30-day comment period.
- CRCOG will place notice of the opportunity to comment in a legal ad in the Hartford Courant as well as other local, minority, or alternative language newspapers as appropriate.
- CRCOG will send the legal notice to all town clerk’s offices in the region.
- CRCOG will provide contact information to be used for submitting comments.
- CRCOG will accept oral and written comments at the public meeting.
- CRCOG will also accept written comments that are submitted by mail or e-mail.
- CRCOG will provide a summary of responses to significant public comments received during the public comment period.



## Key Public Involvement Events for the TIP

Notice and TIP posted at <a href="http://www.crcog.org/tip">www.crcog.org/tip</a> :	September 10, 2020  Hardcopies of the TIP are available upon request. Please contact Michael Cipriano at (860) 724-4223 or <a href="mailto:mcipriano@crcog.org">mcipriano@crcog.org</a> .
Legal Notices:	September 10, 2020 <ul style="list-style-type: none"><li>• The Hartford News (English, Spanish)</li></ul> September 11, 2020 <ul style="list-style-type: none"><li>• The Hartford Courant (English)</li><li>• Identidad Latina (English, Spanish)</li><li>• The White Eagle (English, Polish)</li></ul>
Notice sent to town clerks:	September 11, 2020
Public Information Meetings:	September 30, 2020 (1pm and 7pm)  To attend a public meeting, please register via the links found at <a href="http://www.crcog.org/tip">www.crcog.org/tip</a> .  If you need assistance, please contact Michael Cipriano at (860) 724-4223 or <a href="mailto:mcipriano@crcog.org">mcipriano@crcog.org</a> .
Comments accepted until:	October 12, 2020  Comments or questions may be submitted to:  Michael Cipriano, Senior Transportation Planner E-mail: <a href="mailto:mcipriano@crcog.org">mcipriano@crcog.org</a> Mail: CRCOG, 241 Main Street, Hartford, CT 06106 Phone: (860) 724-4223
Key Comments:	A table summarizing the comments received during the public comment period will be incorporated into the TIP document before it is considered for adoption.

## Financial Summary

Federal regulations require that every regional and State TIP<sup>2</sup> (STIP) be “fiscally constrained”. Fiscal constraint means that program costs for a given year cannot exceed program revenues for a given year. However, since most of the federal funding authorizations are made for statewide programs, individual regions are dependent on the Connecticut Department of Transportation to provide estimates of the amount of federal funds available statewide, and for ensuring that a sufficient portion of those funds are allocated to each region to cover the cost of each region’s program of projects.

As summarized in the table below, CRCOG’s TIP for FFY2021-2024 programs \$243.3 million in transit projects and \$665.1 million in highway projects for a total Transportation Program of \$908.4 million. Additional financial details are available in *Section A: List of Projects to Be Funded (by funding program)* and *Section E: List of Projects to Be Funded (by Town, District, or Statewide)*.

Capital Region TIP Financial Summary – FFY2021-2024 (\$000s)					
Federal Agency	Year	Total	Federal Share	State Share	Local Share
FTA	2021	104,864	83,465	20,851	548
	2022	41,947	33,130	8,259	558
	2023	20,908	16,267	4,059	583
	2024	75,593	59,983	15,005	607
	<i>Subtotal</i>	<i>243,312</i>	<i>192,845</i>	<i>48,174</i>	<i>2,296</i>
FHWA	2021	203,969	172,993	28,760	2,214
	2022	185,304	155,574	28,998	732
	2023	150,021	125,953	23,614	454
	2024	125,809	104,923	20,432	454
	<i>Subtotal</i>	<i>665,103</i>	<i>559,443</i>	<i>101,804</i>	<i>3,854</i>
<b>Total</b>		<b>908,415</b>	<b>752,288</b>	<b>149,978</b>	<b>6,150</b>
<b>Percent of Total</b>		<b>100%</b>	<b>82.8%</b>	<b>16.5%</b>	<b>0.7%</b>

*Note: Slight mathematical anomalies are a result of rounding to the nearest \$1,000.*

<sup>2</sup> The State TIP is a compilation of every regional TIP and is often referred to as the “STIP”.

In addition to the projects planned for Federal Fiscal Years 2021, 2022, 2023, and 2024, the TIP also identifies nearly \$42 million in projects with “FYI” as their year. FYI projects are those that are expected to occur after FFY2024. They are included in the TIP for information purposes only and are summarized in the table below.

<b>Capital Region TIP Financial Summary – FYI Projects (\$000s)</b>					
<b>Federal Agency</b>	<b>Year</b>	<b>Total</b>	<b>Federal Share</b>	<b>State Share</b>	<b>Local Share</b>
<b>FHWA</b>	FYI	41,950	33,560	8,390	0
<b>Total</b>		41,950	33,560	8,390	0
<b>Percent of Total</b>		100%	80%	20%	0%

***CTDOT’s analysis of the statewide TIP (STIP) and each regional TIP demonstrates that both the STIP and CROG’s TIP for FFY2021-2024 are financially constrained.***

The cost of projects listed in the statewide TIP does not exceed the total funds *authorized* by Congress for Federal Highway Administration programs or Federal Transit Administration programs in Connecticut for each of the four years. The spending plan is based on reasonable projections of available statewide resources. As program and schedule changes are made to the TIP, the total expected federal authorizations will be re-allocated to reflect total statewide and regional program needs.

## ***Funding Program Descriptions***

There are three sources of funds within the TIP: Federal Transportation Appropriations (including Federal Highway Administration and Federal Transit Administration funds), the State Special Transportation Fund (primarily in the form of bond authorizations), and Local funds.

### **Federal Funding**

Federal Funding is determined by federal surface transportation authorizations. This document is based on authorization levels established under the Fixing America's Surface Transportation Act (FAST Act). Explanations of eligible uses of each category of funding, limitations, and availability are provided below.

### **Federal Transit Administration Programs**

#### **FTA Section 5307 Capital and Subsidy (Operating) Program**

The FTA Section 5307 funds are primarily for capital assistance projects, such as the purchase of new buses. However, a small portion of these funds is reserved to help defray transit operating expenses.

The primary distinction of this program is that the funds are allocated to individual urbanized areas according to a formula based on the size of the population. However, the Section 5307 funds, apportioned to Connecticut's Urbanized Areas (UZAs), are pooled and then first applied to the highest priority bus needs, as reflected in the various TIPs and the STIP. The pooling of Section 5307 funds has proven to be extremely beneficial to the bus transit operators across the State, because sufficient federal and State funding has been made available in a timely manner to acquire replacement buses, when and where needed. In those years when the bus replacement and/or fixed facility needs for a particular UZA were satisfied, the Section 5307 funds were programmed for priority bus projects in other UZAs. When the priority bus needs had been satisfied, the uncommitted funds were programmed for New Haven Line capital projects. The programming of funds in the TIPs and the STIP continues to reflect this philosophy.

CTDOT provides the non-federal share of FTA capital grants for maintenance facilities and the purchase of replacement buses for all the local bus systems in Connecticut, including Connecticut Transit.

All specific provisions of FTA Circular 9030.1A, Chapter III, Paragraph III-4, which identifies the requirements applicable to the transfer of the apportionment between and among urbanized areas, will be adhered to.

#### **FTA Section 5310 Capital Program**

The FTA Section 5310 Program provides capital assistance to nonprofit organizations that provide specialized transportation services to elderly persons and persons with disabilities. In 1992, the program was expanded to make grants available to public agencies approved by the State to coordinate services for the elderly and disabled.

### **FTA Section 5311 Capital & Operating Program**

The FTA Section 5311 Program provides funds to assist in the development, improvement and use of public transportation systems in non-urbanized and small urban areas. The funds are used in the following ways:

- To reimburse the five Rural transits districts for operating administrative deficits on a 50/33/17 (federal/state/local) matching ratio.
- For Section 5311 transit operators to purchase wheelchair accessible vans and small buses on an 80/20 (federal/state) ratio.
- For transit research, technical assistance, training and related support services, including eligible Section 5310 recipients, using 100 percent federal funds.

### **FTA Section 5317 New Freedoms Initiative**

This program provides funds that assist individuals with disabilities with transportation. Eligible activities include new public transportation services and public transportation alternatives beyond those required by the ADA.

### **FTA Section 5329 Public Transportation Safety and Oversight**

This section requires FTA to implement and maintain a national public transportation safety program to improve the safety of all public transportation systems that receive federal funding. The safety program includes a national public transportation safety plan, a safety certification training program, a public transportation agency safety plan, and a state safety oversight program. Under the FAST Act, section 5329 provides for a temporary Federal assumption of rail transit safety oversight, under certain circumstances. This section also authorizes FTA to issue restrictions and prohibitions to address unsafe conditions or practices, and to withhold funds for non-compliance with safety requirements.

### **FTA Section 5312 Public Transportation Innovation**

This section is to advance public transportation through; research, Innovation and Development, Demonstration, deployment and Evaluation, Low or No Emission Vehicle Component Testing (Low-No Testing), and Transit Cooperative Research Program (TCRP).

### **FTA Section 5339 Bus and Bus Facilities Formula Grants**

This program provides capital funding to replace, rehabilitate, and purchase buses and related equipment and to construct bus-related facilities. It replaced the Section 5309 Bus and Bus Facilities program under SAFETEA-LU.

### **Federal Highway Administration Program**

Federal-aid highway funds for individual programs are apportioned by formula using actors relevant to the particular program.

### **National Highway Performance Program (NHPP)**

The NHPP provides support for the condition and performance of the National Highway System (NHS), for the construction of new facilities on the NHS, and to ensure that investments of Federal-aid funds in highway construction are directed to support progress



toward the achievement of performance targets established in a State's asset management plan for the NHS. NHPP projects must be on an eligible facility and support progress toward achievement of national performance goals for improving infrastructure condition, safety, mobility, or freight movement on the NHS, and be consistent with Metropolitan and Statewide planning requirements. FAST Act allows States to use NHPP funds for reconstruction, resurfacing, restoration, rehabilitation, or preservation of a bridge on a non-NHS Federal-aid highway if Interstate System and NHS Bridge Condition provision requirements are satisfied. Bridges on NHS roadways under \$5 million dollars are programmed using NHPP funds on the Bridge report which is updated regularly and included on CRCOG's TIP website and CTDOT's STIP website.

The NHS within the Capitol Region includes all the Interstate routes as well as freeways and specially designated "principal Arterials" including: I-91, I-84, I-291, I-384, Route 2, Route 66, Route 9, Route 5 & 15, Route 5, Route 44, and portions of the region's more major arterial routes such as Routes 3, 6, 10, and 20.

The funding ratio for the NHPP program is 80 percent federal funds to be matched by 20 percent State funds.

#### **National Highway Freight Program (NFRP)**

The NFRP is focused on improving the efficient movement of freight on the National Highway Freight Network (NHFN). Funds are distributed to States by formula for eligible activities, such as construction, operational improvements, freight planning, and performance measurement. Although the program is highway-focused, each State may use up to 10 percent of its NFRP funds for each fiscal year for public or private freight rail, water facilities (including ports), and intermodal facilities. Starting in FY 2018, a State must have a State Freight Plan (compliant with 49 U.S.C. 70202 and approved by DOT) in order to obligate NFRP funds.

#### **Surface Transportation Program / Surface Transportation Block Grant Program (STP)**

The FAST Act converted the long-standing Surface Transportation Program into the Surface Transportation Block Grant Program, acknowledging that this program has the most flexible eligibilities among all Federal-aid highway programs and aligning the program's name with how FHWA has historically administered it. The STP funds are intended to benefit minor arterial and collector roadways rather than the more critical principal arterials funding by the NPPP and other programs. The Surface Transportation Block Grant Program under the FAST Act continues all prior STP eligibilities and adds a few new ones. FAST Act allows States to use STP/STBG funds for reconstruction, resurfacing, restoration, rehabilitation, or preservation of a bridge on any public road. Bridges on any public roadways under \$5 million dollars that meet these requirements are programmed using STP/STBG funds on the Bridge report, which is updated regularly and included on CRCOG's TIP website and CTDOT's STIP website.

### STP Urban

It is the largest of all the STP programs. Funds are suballocated for use in different areas of the State according to a formula that is based on the area's relative share of the State's population. Subcategories of the STP Urban program for urbanized areas with populations greater than 200,000 within CRCOG include STP-Hartford (STPH), and STP-Springfield (STPS). Areas with population greater than 5,000 but less than 200,000 qualify for STP-Other Urban funds (STPO).

The STP-Urban Program provides funds for improvements to eligible roads in urban areas. The eligibility guidelines for STP-Urban funds are flexible. Funds can be used for a wide range of projects, such as roadway widening, roadway reconstruction, transit projects and ridesharing projects. Historically CRCOG was responsible for determining how to spend STP-Urban funds in the Capitol Region. Since the establishment of the Local Transportation Capital Improvement Program (LOTICIP), CRCOG has worked collaboratively with CTDOT in programming STP-Urban funds within the region, focusing on regionally significant projects.

### STP Anywhere (STPA)

As the name implies, STP-Anywhere funds can be used anywhere in the State, regardless of rural or urban designation. Since STP-Anywhere funds are not allocated to specific urban areas or regions, CTDOT usually determines where the funds will be spent and which projects will be funded. The funds can be used for any type of transportation project. Historically, this program is the largest of all the STP funding categories.

### STP Rural (STPR)

These funds can be used for improvements to eligible roads in the rural areas of the State, which are those areas with population of 5,000 or less

### **Transportation Alternatives Program (TAP)**

The TAP provides funding for programs and projects defined as transportation alternatives, including on- and off-road pedestrian and bicycle facilities, infrastructure projects for improving non-driver access to public transportation and enhanced mobility, community improvements such as historic preservation, environmental mitigation related to storm water and habitat connectivity; recreational trails; and safe routes to school projects. Similar to STP, a portion of TAP is suballocated based on population. The following are the subcategories of the TAP within CRCOG:

- TAP – Anywhere/Flex (TAP-Flex)
- TAP – Hartford (TAPH)
- TAP – Springfield (TAPS)
- TAP – Other Urban (TAPO)
- TAP – Rural (TAPR)
- TAP – Recreational Trails (TAPRT)

All TAP projects are required to be funded through a competitive process.

### **Highway Safety Improvement Program (HSIP)**

This program provides funds to achieve a significant reduction in traffic fatalities and serious injuries on all public roads. The HSIP requires a data-driven, strategic approach to improving highway safety on all public roads that focuses on performance. The FAST Act continues the overarching requirement that HSIP funds be used for safety projects that are consistent with the State's strategic highway safety plan (SHSP) and that correct or improve a hazardous road location or feature or address a highway safety problem. Projects under \$5 million that are funded with this program are listed on a separate report, the Safety Report. This report is updated regularly and included on CRCOG's TIP website and CTDOT's STIP website.

### **Repurposed Earmark Program (REP)**

The Consolidated Appropriations Act of 2016 was the first Act that allowed States to repurpose certain funds originally earmarked for specific projects; more specifically, any earmark that was designated more than 10 fiscal years prior to the current fiscal year and less than 10% obligated or final vouchered and closed. These earmark funds could be repurposed to a new or existing STP/STBG eligible project in the State within 50 miles of the original earmark designation. Appropriations Acts of 2017-2020 provided similar opportunities, with the Appropriations Act of 2020 reducing the allowable distance for repurposing to within 25 miles of the original earmark designation. It is possible that future Appropriations Acts may provide similar opportunities.

### **Highway Bridge Replacement and Rehabilitation Program, Bridge Program: OFF System (BRZ)**

The "Off System" Bridge Program provides funds to replace or rehabilitate deficient bridges on the National Bridge Inventory (NBI) that are not on the Federal-Aid road system, therefore bridges on local roads or Rural minor collectors. CTDOT has a program of regularly inspecting and rating the condition of State and local bridges on the NBI. Candidate projects are selected from the list of local and State bridges with poor or fair condition ratings. Since most State roads are on the Federal-Aid road system, they are not qualified for this program. Therefore, the majority of the funded projects are municipal bridges.

### **Congestion Mitigation and Air Quality Program (CMAQ)**

The CMAQ program provides flexible funding source to State and local governments for transportation projects and programs to help meet the requirements of the Clean Air Act. Funding is available to reduce congestion and improve air quality for areas that do not meet the National Ambient Air Quality Standards for ozone, carbon monoxide, or particulate matter (nonattainment areas) and for former nonattainment areas that are now in compliance (maintenance areas).

All CMAQ funded projects and programs require an assessment and documentation of air quality benefits by the State.

For a State that has a nonattainment or maintenance area for fine particulate matter (PM<sub>2.5</sub>), an amount equal to 25% of the amount of State's CMAQ apportionment

attributable to the weighted population of such areas in the State is set aside for use only in the PM2.5 designated area.

CTDOT has set aside \$12 million of CMAQ funds for the solicitation of project proposals from the MPOs/Rural COGs. This amount will be reviewed annually on the basis of funds provided and projects programmed.

### **Ferry Boat Program (FBP)**

This program is administered by the FHWA to fund the construction of ferry boats and ferry terminal facilities. The FAST Act modified the funding formula, now giving more weight to the number of passengers carried by ferry systems.

### **National Highway Traffic Safety (NHTS) / Section 154 Penalty Funds (Sect 154)**

The State of Connecticut is currently assessed a 2.5% annual penalty from its NHPP and STP programs where funds are transferred to the State's 402 Safety Program because it does not meet Federal Open Container Legislation Requirements under 23 U.S.C. 154. The Department programs these funds towards Impaired Driving and Hazard Elimination Programs. These Programs are intended to change behaviors, save lives, prevent injuries and reduce economic costs due to road traffic crashes, through education, research, and roadway safety improvements.

### **TIGER Discretionary**

Transportation Investment Generating Economic Recovery (TIGER) Discretionary Grants is a Supplementary Discretionary Grants for a National Transportation System. This was initiated as a part of Title XII of the American Recovery and Reinvestment Act of 2009, the "Recovery Act". These grants are to be awarded on a competitive basis for capital investments in surface transportation projects that will have a significant impact on the Nation, a metropolitan area or a region. The objectives of this program include preserving and creating jobs and promoting economic recovery, investing in transportation infrastructure that will provide long-term economic benefits, and assisting those most affected by the current economic downturn.

### **BUILD Grant**

The Better Utilizing Investments to Leverage Development, or BUILD Transportation Discretionary Grant program, provides a unique opportunity for the DOT to invest in road, rail, transit and port projects that promise to achieve national objectives. The eligibility requirements of BUILD allow project sponsors at the State and local levels to obtain funding for multi-modal, multi-jurisdictional projects that are more difficult to support through traditional DOT programs.

### **SAFETEA-LU Carry-over Funds (under MAP-21 and FAST-Act)**

This section gives a brief explanation on SAFETEA-LU funds that are still available (carry-over) under FAST Act and the eligible uses of each category:

*National Highway System (NHS)*

NHS funds can be used for any type of improvement (new lanes, reconstruction, resurfacing, etc.) on roadways designated as part of the NHS. These include all the Interstate routes, as well as other freeways and specially designated “principal arterials.” Qualified major roadways include: I-91, I-84, I-291, I-384, Route 2, Route 66, Route 9, Routes 5 & 15, Route 5, US 44, etc.

The eligibility guidelines for NHS funds are more flexible than the Interstate programs. Funds can be used for transit projects, ridesharing projects, or any other type of project in the travel corridor served by a NHS road, as long as it improves travel in the corridor.

*Interstate Maintenance (IM)*

The IM program provides federal funds to rehabilitate, restore, and resurface the Interstate highway system. This program will not fund reconstruction projects that add new travel lanes to the freeways unless the new lanes are High Occupancy Vehicle (HOV) lanes or auxiliary lanes. However, reconstruction of bridges, interchanges, an overpasses along existing Interstate routes, including the acquisition of right-of-way, may be funded under this program. These funds can only be used on Interstate highways.

*Recreational Trails (RT)*

This program (in MAP-21 and FAST Act is funded under the Transportation Alternative Program) provides funding to the Department of Energy and Environmental Protection (DEEP) to develop and maintain recreational trails for motorized and non-motorized recreational trail users. The DEEP will forward applications to the Park and Recreation Directors or the First Elected Officials of each municipality for consideration.

*Safe Routes to School (SRSI)*

This program (in MAP-21 and FAST Act is funded under the Transportation Alternative Program) is designed to enable and encourage children, including those with disabilities, to walk and bicycle to school; to make walking and bicycling to school safe and more appealing; and to facilitate the planning, development and implementation of projects that will improve safety, and reduce traffic, fuel consumption, and air pollution in the vicinity of schools. Funds are to be administered by CTDOT to provide financial assistance to State, local, and regional agencies, including non-profit organizations that demonstrate the ability to meet the requirements of the program.

*Transportation Enhancement (TE)*

The Transportation Enhancement Program (discontinued and replaced with the TAP under MAP-21 and the FAST Act) offered a potential source of funds for making areas more attractive. The program was administered by the State of Connecticut Department of Transportation. Upon the federal government making funding available, the Department solicited projects from the regional planning agencies, which set the priorities among their member towns. CTDOT set aside 50% of the TE funds for these RPO projects. The remaining 50% were selected by CTDOT for projects of Regional and Statewide significance. Streetscape-type projects that address the beautification of



streets in the area were eligible for funding under the Transportation Enhancement Program.

*Bridge Program: ON System*

The primary federal bridge program is the “On System” Bridge Program. It provides funds to replace or rehabilitate bridges on eligible roads. To be eligible, a bridge must be on a road classified as a collector or higher. That is, it must be “on” the Federal-Aid road system. CTDOT has a program of regularly inspecting and rating the condition of bridges. Candidate projects are selected from the list of bridges with poor or fair condition ratings. Available funds are currently programmed for Bridges on the State Highway system.

*Value Pricing Pilot Program (VPPP)*

Congress has mandated this program as an experimental program to learn the potential of different value pricing approaches for reducing congestion. The grant program supports efforts by State and local governments or other public authorities to establish, monitor and evaluate value pricing projects, and to report on their effects. A pricing project under this program may include tolls on Interstate highways. Federal funds can be used to support pre-implementation costs, including costs of public participation and pre-project planning for up to 3 years, and to support project implementation costs for up to 3 years.

*Section 330, 115, 117, 112, 120 & 378*

This program is dedicated for those projects that are established by congressional designation and the funds are available until expended.

*Transportation and Community and System Preservation Program (TCSP)*

This program provides funding for the planning and implementation of projects that address the relationships between transportation and the community. Projects should include improving the efficiency of the transportation system; reducing the impacts of transportation on the environment; reducing the need for costly future public infrastructure investments; ensuring efficient access to jobs, services and center of trade; and examining and encouraging private sector development patterns which meet these purposes.

*High Priority Projects (HPP)*

This was a program under TEA-21 and continued under SAFETEA-LU, MAP-21, and carried over to the FAST-Act. The funds are for specific projects identified by Congress. These projects are commonly referred to as demonstration projects.

## **State Funding**

State resources are sufficiently available to match federal dollars, as shown by Connecticut’s record of financing its Transportation Renewal Program. Connecticut’s Special Transportation Fund (STF) was established by the 1983 State legislature to finance the State’s share of the Transportation Infrastructure Renewal Program. This fund is needed to pay the operating expenses of the Department of Transportation; the State (100%) funded infrastructure improvement projects and the interest and principal due from the sale of bonds. The sale of bonds has been consistently at a level sufficient to

match available federal funds. The major sources of STF funds are the motor fuel tax and the motor vehicle receipt, which, combined, make up approximately 80 percent of the total fund revenue.

### **Local Funding**

Limited projects included in the TIP/STIP require a local match to federal funds. The municipality in which these projects are located are responsible for the local match if required. Local funding sources may include bonding, Local Capital Improvement Program (LOCIP), or other sources.

## ***How to Read Project Listings***

<b>Funding Program</b>	Name of the federal program that will be used to fund the project. See detailed list of program codes beginning on following page.
<b>Project Number</b>	State project number assigned to the project.
<b>Route</b>	Project location: name of the road or the State route number (does not apply to transit projects or region wide projects).
<b>Town</b>	Project location: name of the town/area (or multi-town / statewide)
<b>Description</b>	Brief description of the project.
<b>“AC”</b>	The initials “AC” appear in the descriptions of some highway projects. <b>AC</b> stands for <b>Advance Construction</b> , which describes a financing procedure in which a project is ‘advertised’ for construction bids <u>late</u> in one fiscal year ( <b>AC Entry</b> ), but the actual funding commitment occurs in the following fiscal year ( <b>AC Conversion</b> .) Thus, these projects are typically listed for both years, with “0” funding showing in the first year of advertisement, and the full funding showing in the subsequent year(s) of funding obligation. In some cases, a portion of the AC Conversion can occur in the year of the AC Entry, with additional funding occurring in the following year(s).
<b>Phase</b>	Indicates which phase of the project is being funded. <b>PE</b> = design/engineering <b>PD</b> = preliminary design <b>FD</b> = final design <b>ROW</b> = rights-of-way acquisition <b>CON</b> = construction <b>All</b> = all phases <b>ACQ</b> = acquisition of capital equipment <b>SF</b> = staffing function <b>OTH</b> = other (usually transit operating assistance) <b>PL</b> = planning studies and other pre-design activities
<b>Total \$</b>	Total cost of phase being funded. (Federal share + State share + local share, in thousands)
<b>Federal \$</b>	Federal share of phase being funded (in thousands)
<b>State \$</b>	State share of phase being funded (in thousands)
<b>Local \$</b>	Local or town share of phase being funded (in thousands)

<b>Funding Year</b>	<p>Year in which funds are scheduled to be committed/“obligated”</p> <p>21 = federal fiscal year 2018 (Oct. 1, 2020 - Sept. 30, 2021)</p> <p>22 = federal fiscal year 2016 (Oct. 1, 2021 - Sept. 30, 2022)</p> <p>23 = federal fiscal year 2017 (Oct. 1, 2022 - Sept. 30, 2023)</p> <p>24 = federal fiscal year 2018 (Oct. 1, 2023 - Sept. 30, 2024)</p> <p>FYI = expected to be initiated after Sept. 30, 2024 - <i>included in the TIP for information purposes only</i></p>
<b>Comments</b>	<p>Any special comments about the project. For example, “NEW” means that this is the first time the project has appeared in the TIP. As amendments are added to the TIP, “awaiting federal approval” would indicate that CRCOG has approved the project(s) but that the federal agencies are still reviewing the project(s).</p>

## Program Funding Codes

### Federal Transit Administration

<b>SECTION 5307C</b>	Capital Funding Programs
<b>SECTION 5307E</b>	Transit Enhancements Funding Programs (Set-Aside)
<b>SECTION 5307O</b>	Operating Subsidy Funding Programs
<b>SECTION 5307P</b>	Carryover – Capital Funding Programs
<b>SECTION 5307R</b>	Carryover – Transit Enhancements Funding Programs
<b>SECTION 5307S</b>	Flex Funds Programs
<b>SECTION 5310C</b>	Capital Funding Programs (Services to Elderly and Disabled)
<b>SECTION 5311C</b>	Capital for Non-Urbanized and Small Urban Areas
<b>SECTION 5311O</b>	Operating Subsidy for Non-Urbanized Areas
<b>SECTION 5311P</b>	Carryover for Non-Urbanized Areas
<b>SECTION 5311R</b>	Carryover of 5310 Capital Funds Transferred to 5311
<b>SECTION 5311T</b>	Rural Transportation Assistance Programs (RTAP)
<b>SECTION 5329</b>	State Safety Oversight (SSO) Program
<b>SECTION 5339</b>	Bus and Bus Facilities

### Surface Transportation Programs (STP/STBG)

<b>STPA</b>	STP Anywhere Programs
<b>STPA-BRX</b>	STP Anywhere- Bridge On System Program
<b>STPH</b>	STP Hartford Programs (STP Urban)
<b>STPO</b>	STP Other Urban Programs
<b>STPR</b>	STP Rural Programs
<b>STPS</b>	STP Springfield Programs (STP Urban)

**Transportation Alternative Program**

<b>TAPA</b>	TAP Anywhere Programs
<b>TAPH</b>	TAP Hartford Programs
<b>TAPO</b>	TAP Other Urban Programs
<b>TAPR</b>	TAP Rural Programs
<b>TAPS</b>	TAP Springfield Programs
<b>TAPT</b>	TAP Enhancement

**All Other FHWA Programs**

<b>BRX</b>	*Bridge On System Programs
<b>BRZ</b>	Bridge Off System Programs
<b>CMAQ</b>	Congestion Mitigation and Air Quality Programs
<b>FBD</b>	Ferry Boat Discretionary
<b>HPP</b>	High Priority Programs
<b>HSIP</b>	Highway Safety Improvement Program
<b>I-M</b>	*Interstate Maintenance
<b>NFRP</b>	National Highway Freight Program
<b>NHPP</b>	National Highway Performance Program
<b>NHPP-BRX</b>	NHPP Bridge On System Program
<b>NHS</b>	*National Highway System
<b>NHTS</b>	National Highway Traffic Safety
<b>REP</b>	Repurposing Earmark Program
<b>SRSI</b>	*Safe Route To School Program
<b>STPT</b>	*STP Enhancement
<b>TCSP</b>	Transportation & Community & System Preservation Program
<b>TIGER</b>	Transportation Investment Generating Economic Recovery
<b>VPPP</b>	Value Pricing Pilot Program

\*Denotes SAFETEA-LU Carry-over Funds



## Section A: List of Projects to Be Funded (by funding program)

Region	Proj	RouteSystem	Town	Description	Phase	Year	TOT \$000s	Fed \$000s	State \$000s	Local \$000s	Comment
FTA SECTION 5307 CAPITAL											
STATEWIDE	0170-3403	VARIOUS	VARIOUS	TRANSIT CAPITAL PLANNING. FY 21	OTH	2021	450	360	90	0	
STATEWIDE	0170-XXXX	STATEWIDE	VARIOUS	STATEWIDE BUS STOP SIGN PROGRAM - IMPLEMENTATION FY 21	OTH	2021	1500	1200	300	0	
STATEWIDE	0170-XXXX	STATEWIDE	VARIOUS	STATEWIDE BUS SHELTER IMPROVEMENT PROGRAM FY 21	OTH	2021	1500	1200	300	0	
MULTIPLE	0400-XXXX	CTTRANSIT	VARIOUS	CTTRANSIT FACILITY IMPROVEMENTS/MISC ADMIN CAPITAL FY 21	OTH	2021	1250	1000	250	0	
MULTIPLE	0400-XXXX	CTTRANSIT	VARIOUS	CTTRANSIT BUS REPLACEMENTS FY 21	OTH	2021	11875	9500	2375	0	
MULTIPLE	0400-XXXX	CTTRANSIT	VARIOUS	CTTRANSIT - FACILITY IMPROVEMENTS (HARTFORD/STAMFORD) FY 21	ALL	2021	28750	23000	5750	0	
CAPITOL	0426-XXXX	GHTD	HARTFORD	GHTD - UNION STATION REHAB/IMPROVEMENTS FY 21(ROOF)	CON	2021	3125	2500	625	0	
CAPITOL	0426-XXXX	GHTD	HARTFORD	GHTD - REPLACE PARATRANSIT VEHICLES FY 21	ACQ	2021	2500	2000	500	0	
CAPITOL	0426-XXXX	GHTD	HARTFORD	GHTD - ADMIN CAPITAL/MISC SUPPORT FY 2021	OTH	2021	750	600	150	0	
2021 Totals:							51700	41360	10340	0	

Capitol Region Transportation Improvement Program  
FFY2021-2024 **DRAFT**

Region	Proj	RouteSystem	Town	Description	Phase	Year	TOT \$000s	Fed \$000s	State \$000s	Local \$000s	Comment
<b>FTA SECTION 5307 CAPITAL</b>											
STATEWIDE	0170-XXXX	VARIOUS	STATEWIDE	TRANSIT CAPITAL PLANNING FY 22	OTH	2022	450	360	90	0	
STATEWIDE	0170-XXXX	STATEWIDE	VARIOUS	STATEWIDE BUS SHELTER IMPROVEMENT PROGRAM FY 22	OTH	2022	1500	1200	300	0	
MULTIPLE	0400-XXXX	CTTRANSIT	VARIOUS	CTTRANSIT FACILITY IMPROVEMENTS/MISC ADMIN CAPITAL FY 22	OTH	2022	1000	800	200	0	
MULTIPLE	0400-XXXX	CTTRANSIT	VARIOUS	CTTRANSIT BUS REPLACEMENTS FY 22	ACQ	2022	10000	8000	2000	0	
MULTIPLE	0400-XXXX	CTTRANSIT	VARIOUS	CTTRANSIT - FACILITY IMPROVEMENTS (HARTFORD/STAMFORD) FY 22	ALL	2022	11368	9094	2274	0	
CAPITOL	0426-XXXX	GHTD	HARTFORD	GHTD - UNION STATION REHAB/IMPROVEMENTS FY 22	ALL	2022	2000	1600	400	0	
CAPITOL	0426-XXXX	GHTD	HARTFORD	GHTD - REPLACE PARATRANSIT VEHICLES FY 22	ACQ	2022	2300	1840	460	0	
CAPITOL	0426-XXXX	GHTD	HARTFORD	GHTD - ADMIN CAPITAL/MISC SUPPORT FY 22	OTH	2022	1500	1200	300	0	
<b>2022 Totals:</b>							<b>30118</b>	<b>24094</b>	<b>6024</b>	<b>0</b>	
STATEWIDE	0170-XXXX	VARIOUS	STATEWIDE	TRANSIT CAPITAL PLANNING FY 23	OTH	2023	450	360	90	0	
STATEWIDE	0170-XXXX	STATEWIDE	VARIOUS	STATEWIDE BUS SHELTER IMPROVEMENTT PROGRAM FY 23	OTH	2023	1500	1200	300	0	
MULTIPLE	0400-XXXX	CTTRANSIT	VARIOUS	CTTRANSIT FACILITY IMPROVEMENTS/MISC ADMIN CAPITAL FY 23	OTH	2023	1000	800	200	0	
CAPITOL	0426-XXXX	GHTD	HARTFORD	GHTD - UNION STATION REHAB/IMPROVEMENTS FY 23	ALL	2023	2000	1600	400	0	
CAPITOL	0426-XXXX	GHTD	HARTFORD	GHTD - REPLACE PARATRANSIT VEHICLES FY 23	ACQ	2023	3000	2400	600	0	
CAPITOL	0426-XXXX	GHTD	HARTFORD	GHTD - ADMIN CAPITAL/MISC SUPPORT FY 23	OTH	2023	1500	1200	300	0	
<b>2023 Totals:</b>							<b>9450</b>	<b>7560</b>	<b>1890</b>	<b>0</b>	

Capitol Region Transportation Improvement Program  
FFY2021-2024 **DRAFT**

Region	Proj	RouteSystem	Town	Description	Phase	Year	TOT \$000s	Fed \$000s	State \$000s	Local \$000s	Comment
FTA SECTION 5307 CAPITAL											
STATEWIDE	0170-XXXX	VARIOUS	STATEWIDE	TRANSIT CAPITAL PLANNING FY 24	OTH	2024	450	360	90	0	
STATEWIDE	0170-XXXX	STATEWIDE	VARIOUS	STATEWIDE BUS SHELTER IMPROVEMENT PROGRAM FY 24	OTH	2024	1500	1200	300	0	
MULTIPLE	0400-XXXX	CTTRANSIT	VARIOUS	CTTRANSIT FACILITY IMPROVEMENTS /MISC CAPITAL FY 24	OTH	2024	1000	800	200	0	
MULTIPLE	0400-XXXX	CTTRANSIT	VARIOUS	CTTRANSIT - FACILITY IMPROVEMENTS(HARTFORD/STAMFORD) FY 24	ALL	2024	35000	28000	7000	0	
MULTIPLE	0400-XXXX	CTTRANSIT	VARIOUS	CTTRANSIT - BUS REPLACEMENTS FY 24	ACQ	2024	21250	17000	4250	0	
CAPITOL	0426-XXXX	GHTD	HARTFORD	GHTD - UNION STATION REHAB/IMPROVEMENTS FY 24	ALL	2024	1000	800	200	0	
CAPITOL	0426-XXXX	GHTD	HARTFORD	GHTD - REPLACE PARATRANSIT VEHILCES FY 24	ACQ	2024	3000	2400	600	0	
CAPITOL	0426-XXXX	GHTD	HARTFORD	GHTD - ADMIN CAPITAL/MISC SUPPORT FY 24	OTH	2024	750	600	150	0	
<b>2024 Totals:</b>							<b>63950</b>	<b>51160</b>	<b>12790</b>	<b>0</b>	

Capitol Region Transportation Improvement Program  
FFY2021-2024 **DRAFT**

Region	Proj	RouteSystem	Town	Description	Phase	Year	TOT \$000s	Fed \$000s	State \$000s	Local \$000s	Comment
FTA SECTION 5307 CARRYOVER											
STATEWIDE	0170-XXXX	VARIOUS	STATEWIDE	TRANSIT CAPITAL PLANNING FY 21	OTH	2021	450	360	90	0	
STATEWIDE	0170-XXXX	STATEWIDE	VARIOUS	STATEWIDE BUS STOP SIGN PROGRAM-IMPLEMENTATION.	OTH	2021	500	400	100	0	
STATEWIDE	0170-XXXX	STATEWIDE	VARIOUS	STATEWIDE BUS SHELTER IMPROVEMENT PROGRAM. FY 21	OTH	2021	1500	1200	300	0	
MULTIPLE	0400-XXXX	CTTRANSIT	VARIOUS	CTTRANSIT FACILITY IMPROVEMENT/MISC. ADMIN CAPITAL.	OTH	2021	800	640	160	0	
MULTIPLE	0400-XXXX	CTTRANSIT	VARIOUS	CTTRANSIT BUS REPLACEMENT	CON	2021	13750	11000	2750	0	
CAPITOL	0401-0012	CTTRANSIT	HARTFORD	CTTRANSIT HARTFORD FACILITY IMPROVEMENTS.	CON	2021	25000	20000	5000	0	
<b>2021 Totals:</b>							<b>42000</b>	<b>33600</b>	<b>8400</b>	<b>0</b>	

Capitol Region Transportation Improvement Program  
FFY2021-2024 **DRAFT**

Region	Proj	RouteSystem	Town	Description	Phase	Year	TOT \$000s	Fed \$000s	State \$000s	Local \$000s	Comment
<b>FTA SECTION 5310 ENHANCED MOBILITY</b>											
CAPITOL	0170-XXXX	VARIOUS BUS	HARTFORD	SEC 5310 PRGRM-ENHANCED MOBILITY OF URBANIZED AREA SENIORS/INDIVIDUALS w/DISABILITIES-HARTFORD	OTH	2021	1063	850	0	213	
MULTIPLE	0170-XXXX	VARIOUS BUS	RURAL	SEC 5310 PRGRM-ENHANCED MOBILITY OF SENIORS/INDIVIDUALS w/DISABILITIES-RURAL	OTH	2021	352	282	0	70	
CAPITOL	0170-XXXX	VARIOUS BUS	SPFLD	SEC 5310 PRGRM-ENHANCED MOBILITY OF URBANIZED AREA SENIORS/INDIVIDUALS w/DISABILITIES-SPFLD	OTH	2021	112	90	0	22	
<b>2021 Totals:</b>							<b>1527</b>	<b>1222</b>	<b>0</b>	<b>305</b>	
CAPITOL	0170-XXXX	VARIOUS BUS	HARTFORD	SEC 5310 PRGRM-ENHANCED MOBILITY OF URBANIZED AREA SENIORS/INDIVIDUALS w/DISABILITIES-HARTFORD	OTH	2022	1095	876	0	219	
MULTIPLE	0170-XXXX	VARIOUS BUS	RURAL	SEC 5310 PRGRM-ENHANCED MOBILITY OF SENIORS/INDIVIDUALS w/DISABILITIES-RURAL	OTH	2022	363	290	0	73	
CAPITOL	0170-XXXX	VARIOUS BUS	SPFLD	SEC 5310 PRGRM-ENHANCED MOBILITY OF URBANIZED AREA SENIORS/INDIVIDUALS w/DISABILITIES-SPFLD	OTH	2022	116	93	0	23	
<b>2022 Totals:</b>							<b>1574</b>	<b>1259</b>	<b>0</b>	<b>315</b>	
CAPITOL	0170-XXXX	VARIOUS BUS	HARTFORD	SEC 5310 PRGRM-ENHANCED MOBILITY OF URBANIZED AREA SENIORS/INDIVIDUALS w/DISABILITIES-HARTFORD	OTH	2023	1128	902	0	226	
MULTIPLE	0170-XXXX	VARIOUS BUS	RURAL	SEC 5310 PRGRM-ENHANCED MOBILITY OF SENIORS/INDIVIDUALS w/DISABILITIES-RURAL	OTH	2023	374	299	0	75	
CAPITOL	0170-XXXX	VARIOUS BUS	SPFLD	SEC 5310 PRGRM-ENHANCED MOBILITY OF URBANIZED AREA SENIORS/INDIVIDUALS w/DISABILITIES-SPFLD	OTH	2023	119	95	0	24	
<b>2023 Totals:</b>							<b>1621</b>	<b>1296</b>	<b>0</b>	<b>325</b>	
CAPITOL	0170-XXXX	VARIOUS BUS	HARTFORD	SEC 5310 PRGRM-ENHANCED MOBILITY OF URBANIZED AREA SENIORS/INDIVIDUALS w/DISABILITIES-HARTFORD	OTH	2024	1162	929	0	232	
MULTIPLE	0170-XXXX	VARIOUS BUS	RURAL	SEC 5310 PRGRM-ENHANCED MOBILITY OF SENIORS/INDIVIDUALS w/DISABILITIES-RURAL	OTH	2024	385	308	0	77	
CAPITOL	0170-XXXX	VARIOUS BUS	SPFLD	SEC 5310 PRGRM-ENHANCED MOBILITY OF URBANIZED AREA SENIORS/INDIVIDUALS w/DISABILITIES-SPFLD	OTH	2024	123	98	0	25	
<b>2024 Totals:</b>							<b>1670</b>	<b>1335</b>	<b>0</b>	<b>334</b>	

Region	Proj	RouteSystem	Town	Description	Phase	Year	TOT \$000s	Fed \$000s	State \$000s	Local \$000s	Comment
<b>FTA SECTION 5311 CAPITOL</b>											
MULTIPLE	0474-XXXX	WINDHAM TD	WINDHAM	WINDHAM TD - SECTION 5311 CAPITAL FY 2021	OTH	2021	50	40	10	0	
<b>2021 Totals:</b>							<b>50</b>	<b>40</b>	<b>10</b>	<b>0</b>	
MULTIPLE	0474-XXXX	WINDHAM TD	WINDHAM	WINDHAM TD - SECTION 5311 CAPITAL FY 2022	OTH	2022	600	480	120	0	
<b>2022 Totals:</b>							<b>600</b>	<b>480</b>	<b>120</b>	<b>0</b>	
MULTIPLE	0474-XXXX	WINDHAM TD	WINDHAM	WINDHAM TD - SECTION 5311 CAPITAL FY 2023	OTH	2023	45	36	9	0	
<b>2023 Totals:</b>							<b>45</b>	<b>36</b>	<b>9</b>	<b>0</b>	
MULTIPLE	0474-XXXX	WINDHAM TD	WINDHAM	WINDHAM TD - SECTION 5311 CAPITAL FY 2024	OTH	2024	20	16	4	0	
<b>2024 Totals:</b>							<b>20</b>	<b>16</b>	<b>4</b>	<b>0</b>	

Capitol Region Transportation Improvement Program  
FFY2021-2024 **DRAFT**

Region	Proj	RouteSystem	Town	Description	Phase	Year	TOT \$000s	Fed \$000s	State \$000s	Local \$000s	Comment
<b>FTA SECTION 5311 OPERATING</b>											
MULTIPLE	0474-XXXX	WINDHAM TD	WINDHAM	WINDHAM TD - SECTION 5311 OPERATING (WILLIMANTIC-DANIELSON) - FY 2021	OTH	2021	49	24	24	0	
MULTIPLE	0474-XXXX	WINDHAM TD	WINDHAM	WINDHAM TD - SECTION 5311 OPERATING (JOB ACCESS) - FY 2021	OTH	2021	278	139	139	0	
MULTIPLE	0474-XXXX	WINDHAM TD	WINDHAM	WINDHAM TD - SECTION 5311 OPERATING (FIXED ROUTE) - FY 2021	OTH	2021	830	415	274	141	
MULTIPLE	0474-XXXX	WINDHAM TD	WINDHAM	WINDHAM TD - SECTION 5311 OPERATING (DIAL A RIDE) - FY 2021	OTH	2021	597	299	197	102	
<b>2021 Totals:</b>							<b>1754</b>	<b>877</b>	<b>634</b>	<b>243</b>	
MULTIPLE	0474-XXXX	WINDHAM TD	WINDHAM	WINDHAM TD - SECTION 5311 OPERATING (WILLIMANTIC-DANIELSON) - FY 2022	OTH	2022	49	24	24	0	
MULTIPLE	0474-XXXX	WINDHAM TD	WINDHAM	WINDHAM TD - SECTION 5311 OPERATING (JOB ACCESS) - FY 2022	OTH	2022	278	139	139	0	
MULTIPLE	0474-XXXX	WINDHAM TD	WINDHAM	WINDHAM TD - SECTION 5311 OPERATING (FIXED ROUTE) - FY 2022	OTH	2022	830	415	274	141	
MULTIPLE	0474-XXXX	WINDHAM TD	WINDHAM	WINDHAM TD - SECTION 5311 OPERATING (DIAL A RIDE) - FY 2022	OTH	2022	597	299	197	102	
<b>2022 Totals:</b>							<b>1754</b>	<b>877</b>	<b>634</b>	<b>243</b>	
MULTIPLE	0474-XXXX	WINDHAM TD	WINDHAM	WINDHAM TD - SECTION 5311 OPERATING (WILLIMANTIC-DANIELSON) - FY 2023	OTH	2023	52	26	26	0	
MULTIPLE	0474-XXXX	WINDHAM TD	WINDHAM	WINDHAM TD - SECTION 5311 OPERATING (JOB ACCESS) - FY 2023	OTH	2023	295	147	147	0	
MULTIPLE	0474-XXXX	WINDHAM TD	WINDHAM	WINDHAM TD - SECTION 5311 OPERATING (FIXED ROUTE) - FY 2023	OTH	2023	880	440	291	150	
MULTIPLE	0474-XXXX	WINDHAM TD	WINDHAM	WINDHAM TD - SECTION 5311 OPERATING (DIAL A RIDE) - FY 2023	OTH	2023	633	317	209	108	
<b>2023 Totals:</b>							<b>1860</b>	<b>930</b>	<b>673</b>	<b>258</b>	



Region	Proj	RouteSystem	Town	Description	Phase	Year	TOT \$000s	Fed \$000s	State \$000s	Local \$000s	Comment
<b>FTA SECTION 5311 OPERATING</b>											
MULTIPLE	0474-XXXX	WINDHAM TD	WINDHAM	WINDHAM TD - SECTION 5311 OPERATING (WILLIMANTIC-DANIELSON) - FY 2024	OTH	2024	55	28	28	0	
MULTIPLE	0474-XXXX	WINDHAM TD	WINDHAM	WINDHAM TD - SECTION 5311 OPERATING (JOB ACCESS) - FY 2024	OTH	2024	312	156	156	0	
MULTIPLE	0474-XXXX	WINDHAM TD	WINDHAM	WINDHAM TD - SECTION 5311 OPERATING (FIXED ROUTE) - FY 2024	OTH	2024	933	467	308	159	
MULTIPLE	0474-XXXX	WINDHAM TD	WINDHAM	WINDHAM TD - SECTION 5311 OPERATING (DIAL A RIDE) - FY 2024	OTH	2024	671	336	222	114	
<b>2024 Totals:</b>							<b>1971</b>	<b>987</b>	<b>714</b>	<b>273</b>	
<b>FTA SECTION 5311 RURAL ASSISTANCE</b>											
STATEWIDE	0170-XXXX	SECTION 5311	VARIOUS	SECTION 5311 PROG ADJUST TO ACTUAL APPR, ADMIN & RTAP PROG FFY 2021	OTH	2021	500	500	0	0	
<b>2021 Totals:</b>							<b>500</b>	<b>500</b>	<b>0</b>	<b>0</b>	
STATEWIDE	0170-XXXX	SECTION 5311	VARIOUS	SECTION 5311 PROG ADJUST TO ACTUAL APPR, ADMIN & RTAP PROG FFY 2022	OTH	2022	500	500	0	0	
<b>2022 Totals:</b>							<b>500</b>	<b>500</b>	<b>0</b>	<b>0</b>	
STATEWIDE	0170-XXXX	SECTION 5311	VARIOUS	SECTION 5311 PROG ADJUST TO ACTUAL APPR, ADMIN & RTAP PROG FFY 2023	OTH	2023	500	500	0	0	
<b>2023 Totals:</b>							<b>500</b>	<b>500</b>	<b>0</b>	<b>0</b>	
STATEWIDE	0170-XXXX	SECTION 5311	VARIOUS	SECTION 5311 PROG ADJUST TO ACTUAL APPR, ADMIN & RTAP PROG FFY 2024	OTH	2024	500	500	0	0	
<b>2024 Totals:</b>							<b>500</b>	<b>500</b>	<b>0</b>	<b>0</b>	

Region	Proj	RouteSystem	Town	Description	Phase	Year	TOT \$000s	Fed \$000s	State \$000s	Local \$000s	Comment
<b>FTA SECTION 5337 STATE OF GOOD REPAIR</b>											
MULTIPLE	0171-XXXX	CTFASTRAK	VARIOUS	CTFASTRAK INFRASTRUCTURE/STATION/FACILITY IMPROVEMENTS FY 21	CON	2021	1480	1184	296	0	
<b>2021 Totals:</b>							<b>1480</b>	<b>1184</b>	<b>296</b>	<b>0</b>	
MULTIPLE	0171-XXXX	CTFASTRAK	VARIOUS	CTFASTRAK INFRASTRUCTURE/STATION/FACILITY IMPROVEMENTS FY 22	CON	2022	1525	1220	305	0	
<b>2022 Totals:</b>							<b>1525</b>	<b>1220</b>	<b>305</b>	<b>0</b>	
MULTIPLE	0171-XXXX	CTFASTRAK	VARIOUS	CTFASTRAK INFRASTRUCTURE/STATION/FACILITY IMPROVEMENTS FY 23	CON	2023	1556	1245	311	0	
<b>2023 Totals:</b>							<b>1556</b>	<b>1245</b>	<b>311</b>	<b>0</b>	
MULTIPLE	0171-XXXX	CTFASTRAK	VARIOUS	CTFASTRAK INFRASTRUCTURE/STATION/FACILITY IMPROVEMENTS FY 24	CON	2024	1606	1285	321	0	
<b>2024 Totals:</b>							<b>1606</b>	<b>1285</b>	<b>321</b>	<b>0</b>	

Capitol Region Transportation Improvement Program  
FFY2021-2024 **DRAFT**

Region	Proj	RouteSystem	Town	Description	Phase	Year	TOT \$000s	Fed \$000s	State \$000s	Local \$000s	Comment
<b>FTA SECTION 5339 BUS AND BUS FACILITIES FORMULA GRANTS</b>											
MULTIPLE	0400-XXXX	CTTRANSIT	VARIOUS	CTTRANSIT SYSTEMWIDE BUS REPLACEMENTS FY 21	ACQ	2021	1875	1500	375	0	
MULTIPLE	0400-XXXX	CTTRANSIT	VARIOUS	CTTRANSIT FACILITY IMPROVEMENTS FY 21	ALL	2021	3978	3182	796	0	
<b>2021 Totals:</b>							<b>5853</b>	<b>4682</b>	<b>1171</b>	<b>0</b>	
MULTIPLE	0400-XXXX	CTTRANSIT	VARIOUS	CTTRANSIT SYSTEMWIDE BUS REPLACEMENTS FY 22	ACQ	2022	938	750	188	0	
MULTIPLE	0400-XXXX	CTTRANSIT	VARIOUS	CTTRANSIT FACILITY IMPROVEMENTS FY 22	ALL	2022	4938	3950	988	0	
<b>2022 Totals:</b>							<b>5876</b>	<b>4700</b>	<b>1176</b>	<b>0</b>	
MULTIPLE	0400-XXXX	CTTRANSIT	VARIOUS	CTTRANSIT SYSTEMWIDE BUS REPLACEMENTS FY 23	ACQ	2023	4938	3950	988	0	
MULTIPLE	0400-XXXX	CTTRANSIT	VARIOUS	CTTRANSIT FACILITY IMPROVEMENTS FY 23	ALL	2023	938	750	188	0	
<b>2023 Totals:</b>							<b>5876</b>	<b>4700</b>	<b>1176</b>	<b>0</b>	
MULTIPLE	0400-XXXX	CTTRANSIT	VARIOUS	CTTRANSIT SYSTEMWIDE BUS REPLACEMENTS FY 24	ACQ	2024	938	750	188	0	
MULTIPLE	0400-XXXX	CTTRANSIT	VARIOUS	CTTRANSIT FACILITY IMPROVEMENTS FY 24	ALL	2024	4938	3950	988	0	
<b>2024 Totals:</b>							<b>5876</b>	<b>4700</b>	<b>1176</b>	<b>0</b>	
<b>TRANSPORTATION ALTERNATIVES PROGRAM HARTFORD</b>											
CAPITOL	0063-0721	RIVERWALK	HARTFORD	PED/BIKE TRAIL EXTENSION, FROM THE BOATHOUSE TO WESTON STREET	CON	2021	2500	2000	0	500	
<b>2021 Totals:</b>							<b>2500</b>	<b>2000</b>	<b>0</b>	<b>500</b>	

Region	Proj	RouteSystem	Town	Description	Phase	Year	TOT \$000s	Fed \$000s	State \$000s	Local \$000s	Comment
<b>BRIDGE</b>											
STATEWIDE	0170-0BRX	VARIOUS	STATEWIDE	ON/OFF-SYSTEMS BRIDGE IMPROVEMENTS, BRX & BRZ (BRIDGE REPORT)	ALL	2021	50000	40000	10000	0	
<b>2021 Totals:</b>							<b>50000</b>	<b>40000</b>	<b>10000</b>	<b>0</b>	
STATEWIDE	0170-0BRX	VARIOUS	STATEWIDE	ON/OFF-SYSTEMS BRIDGE IMPROVEMENTS, BRX & BRZ (BRIDGE REPORT)	ALL	2022	50000	40000	10000	0	
<b>2022 Totals:</b>							<b>50000</b>	<b>40000</b>	<b>10000</b>	<b>0</b>	
STATEWIDE	0170-0BRX	VARIOUS	STATEWIDE	ON/OFF-SYSTEMS BRIDGE IMPROVEMENTS, BRX & BRZ (BRIDGE REPORT)	ALL	2023	50000	40000	10000	0	
<b>2023 Totals:</b>							<b>50000</b>	<b>40000</b>	<b>10000</b>	<b>0</b>	
STATEWIDE	0170-0BRX	VARIOUS	STATEWIDE	ON/OFF-SYSTEMS BRIDGE IMPROVEMENTS, BRX & BRZ (BRIDGE REPORT)	ALL	2024	50000	40000	10000	0	
<b>2024 Totals:</b>							<b>50000</b>	<b>40000</b>	<b>10000</b>	<b>0</b>	

Region	Proj	RouteSystem	Town	Description	Phase	Year	TOT \$000s	Fed \$000s	State \$000s	Local \$000s	Comment
<b>CONGESTION MITIGATION &amp; AIR QUALITY</b>											
CAPITOL	0088-0192	VARIOUS	NEW BRITAIN	UPGRADE SIGNALS AT VARIOUS INTERSECTIONS	CON	2021	2670	2670	0	0	
DISTRICT 1	0171-0415	RT 9/72	FARMINGTON/CR	RT 9/72 CCTV INSTALLATION - AC ENTRY OMWELL	CON	2021	0	0	0	0	
DISTRICT 1	0171-0415	RT 9/72	FARMINGTON/CR	RT 9/72 CCTV INSTALLATION - AC CONVERSION OMWELL	CON	2021	8750	7000	1750	0	
<b>2021 Totals:</b>							<b>11420</b>	<b>9670</b>	<b>1750</b>	<b>0</b>	
DISTRICT 1	0171-0415	RT 9/72	FARMINGTON/CR	RT 9/72 CCTV INSTALLATION - AC CONVERSION OMWELL	CON	2022	8750	7000	1750	0	
<b>2022 Totals:</b>							<b>8750</b>	<b>7000</b>	<b>1750</b>	<b>0</b>	
DISTRICT 1	0171-0415	RT 9/72	FARMINGTON/CR	RT 9/72 CCTV INSTALLATION - AC CONVERSION OMWELL	CON	2023	8312	6650	1662	0	
<b>2023 Totals:</b>							<b>8312</b>	<b>6650</b>	<b>1662</b>	<b>0</b>	
<b>HIGH PRIORITY PROJECTS</b>											
CAPITOL	0048-0190		ENFIELD	CONSTRUCT HIGH-SPEED RAIL CROSSING TO BIKE & PED TRAILS ALONG THE CT RIVER	CON	2021	3251	2600	0	650	
<b>2021 Totals:</b>							<b>3251</b>	<b>2600</b>	<b>0</b>	<b>650</b>	

Capitol Region Transportation Improvement Program  
FFY2021-2024 **DRAFT**

Region	Proj	RouteSystem	Town	Description	Phase	Year	TOT \$000s	Fed \$000s	State \$000s	Local \$000s	Comment
<b>HIGHWAY SAFETY IMPROVEMENT PROGRAM</b>											
STATEWIDE	0170-SFTY	VARIOUS	STATEWIDE	SAFETY PROGRAM, HSIP - RURAL & OTHER (SAFETY REPORT)	ALL	2021	22222	20000	2222	0	
DISTRICT 1	0171-0440	VARIOUS	DISTRICT 1	HORIZONTAL CURVE SIGNS & PAVEMENT MARKINGS	CON	2021	4975	4975	0	0	
STATEWIDE	CHMP-XXXX	VARIOUS	STATEWIDE	CHAMP SAFETY SERVICE PATROL - AC ENTRY	OTH	2021	0	0	0	0	
STATEWIDE	CHMP-XXXX	VARIOUS	STATEWIDE	CHAMP SAFETY SERVICE PATROL - AC CONVERSION	OTH	2021	4537	4083	0	454	
<b>2021 Totals:</b>							<b>31734</b>	<b>29058</b>	<b>2222</b>	<b>454</b>	
STATEWIDE	0170-SFTY	VARIOUS	STATEWIDE	SAFETY PROGRAM, HSIP - RURAL & OTHER (SAFETY REPORT)	ALL	2022	22222	20000	2222	0	
DISTRICT 2	0172-0477	VARIOUS	DISTRICT 2	HORIZONTAL CURVE SIGNS & PVMT. MARKINGS	CON	2022	6225	6225	0	0	
STATEWIDE	CHMP-XXXX	VARIOUS	STATEWIDE	CHAMP SAFETY SERVICE PATROL - AC CONVERSION	OTH	2022	4537	4083	0	454	
<b>2022 Totals:</b>							<b>32984</b>	<b>30308</b>	<b>2222</b>	<b>454</b>	
STATEWIDE	0170-SFTY	VARIOUS	STATEWIDE	SAFETY PROGRAM, HSIP - RURAL & OTHER (SAFETY REPORT)	ALL	2023	22222	20000	2222	0	
STATEWIDE	CHMP-XXXX	VARIOUS	STATEWIDE	CHAMP SAFETY SERVICE PATROL - AC CONVERSION	OTH	2023	4537	4083	0	454	
<b>2023 Totals:</b>							<b>26759</b>	<b>24083</b>	<b>2222</b>	<b>454</b>	
STATEWIDE	0170-SFTY	VARIOUS	STATEWIDE	SAFETY PROGRAM, HSIP - RURAL & OTHER (SAFETY REPORT)	ALL	2024	22222	20000	2222	0	
STATEWIDE	CHMP-XXXX	VARIOUS	STATEWIDE	CHAMP SAFETY SERVICE PATROL - AC CONVERSION	OTH	2024	4537	4083	0	454	
<b>2024 Totals:</b>							<b>26759</b>	<b>24083</b>	<b>2222</b>	<b>454</b>	

Capitol Region safety projects are listed in Section D. Funding approval is for the entire program, not for individual projects.

Capitol Region Transportation Improvement Program  
FFY2021-2024 **DRAFT**

Region	Proj	RouteSystem	Town	Description	Phase	Year	TOT \$000s	Fed \$000s	State \$000s	Local \$000s	Comment
<b>NATIONAL HIGHWAY PERFORMANCE PROGRAM</b>											
CAPITOL	0007-0250	US 5/CT 15	BERLIN/WETHERSFIELD	INSTALLATION OF CTSS WITH CV TECH (PHASE 1)	CON	2021	10000	8000	2000	0	
CAPITOL	0007-0262	US 5/CT 15	BERLIN	INSTALLATION OF CTSS WITH CV TECH (PHASE 2)	FD	2021	300	240	60	0	
CAPITOL	0007-0262	US 5/CT 15	BERLIN	INSTALLATION OF CTSS WITH CV TECH (PHASE 2)	ROW	2021	120	96	24	0	
CAPITOL	0093-0228	VARIOUS	NEWINGTON	NEWINGTON HIGHWAY OPERATIONS CENTER - AC ENTRY	OTH	2021	0	0	0	0	
CAPITOL	0093-0228	VARIOUS	NEWINGTON	NEWINGTON HIGHWAY OPERATIONS CENTER - AC CONVERSION	OTH	2021	4710	3768	942	0	
CAPITOL	0093-0229	VARIOUS	NEWINGTON	NEWINGTON HIGHWAY OPERATIONS PROCUREMENT - AC ENTRY	OTH	2021	0	0	0	0	
CAPITOL	0093-0229	VARIOUS	NEWINGTON	NEWINGTON HIGHWAY OPERATIONS PROCUREMENT - AC CONVERSION	OTH	2021	2315	1852	463	0	
STATEWIDE	170S-SNHS	VARIOUS	STATEWIDE	CE SIGN SUPPORT INSPECTION - NHS ROADS - AC ENTRY	OTH	2021	0	0	0	0	
STATEWIDE	170S-SNHS	VARIOUS	STATEWIDE	CE SIGN SUPPORT INSPECTION - NHS ROADS - AC CONVERSION	OTH	2021	2250	1800	450	0	
<b>2021 Totals:</b>							<b>19695</b>	<b>15756</b>	<b>3939</b>	<b>0</b>	



Capitol Region Transportation Improvement Program  
FFY2021-2024 **DRAFT**

Region	Proj	RouteSystem	Town	Description	Phase	Year	TOT \$000s	Fed \$000s	State \$000s	Local \$000s	Comment
<b>NATIONAL HIGHWAY PERFORMANCE PROGRAM</b>											
CAPITOL	0007-0262	US 5/CT 15	BERLIN	INSTALLATION OF CTSS WITH CV TECH (PHASE 2)	CON	2022	8000	6400	1600	0	
CAPITOL	0063-0703	I-91/RT 15	HARTFORD	RELOCATION & RECONFIGURE INTERCHANGE 29 - AC ENTRY	CON	2022	0	0	0	0	
CAPITOL	0063-0703	I-91/RT 15	HARTFORD	RELOCATION & RECONFIGURE INTERCHANGE 29 - AC CONVERSION	CON	2022	6250	5000	1250	0	
CAPITOL	0063-0723	I-84	HARTFORD	REPLACE RETAINING WALL AT SOUTH END OF BR 01765	CON	2022	1000	900	100	0	
CAPITOL	0093-XHOC	VARIOUS	NEWINGTON	NEWINGTON HIGHWAY OPERATIONS CENTER - AC ENTRY	OTH	2022	0	0	0	0	
CAPITOL	0093-XHOC	VARIOUS	NEWINGTON	NEWINGTON HIGHWAY OPERATIONS CENTER - AC CONVERSION	OTH	2022	4800	3840	960	0	
CAPITOL	0093-XPRO	VARIOUS	NEWINGTON	NEWINGTON HIGHWAY OPERATIONS PROCUREMENT - AC ENTRY	OTH	2022	0	0	0	0	
CAPITOL	0093-XPRO	VARIOUS	NEWINGTON	NEWINGTON HIGHWAY OPERATIONS PROCUREMENT - AC CONVERSION	OTH	2022	2300	1840	460	0	
STATEWIDE	170S-SNHS	VARIOUS	STATEWIDE	CE SIGN SUPPORT INSPECTION - NHS ROADS - AC CONVERSION	OTH	2022	2250	1800	450	0	
<b>2022 Totals:</b>							<b>24600</b>	<b>19780</b>	<b>4820</b>	<b>0</b>	
CAPITOL	0093-XHOC	VARIOUS	NEWINGTON	NEWINGTON HIGHWAY OPERATIONS CENTER - AC CONVERSION	OTH	2023	4800	3840	960	0	
CAPITOL	0093-XPRO	VARIOUS	NEWINGTON	NEWINGTON HIGHWAY OPERATIONS PROCUREMENT - AC CONVERSION	OTH	2023	2300	1840	460	0	
STATEWIDE	170S-SNHS	VARIOUS	STATEWIDE	CE SIGN SUPPORT INSPECTION - NHS ROADS - AC CONVERSION	OTH	2023	2250	1800	450	0	
<b>2023 Totals:</b>							<b>9350</b>	<b>7480</b>	<b>1870</b>	<b>0</b>	

Capitol Region Transportation Improvement Program  
FFY2021-2024 **DRAFT**

Region	Proj	RouteSystem	Town	Description	Phase	Year	TOT \$000s	Fed \$000s	State \$000s	Local \$000s	Comment
<b>NATIONAL HIGHWAY PERFORMANCE PROGRAM</b>											
CAPITOL	0093-XHOC	VARIOUS	NEWINGTON	NEWINGTON HIGHWAY OPERATIONS CENTER - AC CONVERSION	OTH	2024	4800	3840	960	0	
CAPITOL	0093-XPRO	VARIOUS	NEWINGTON	NEWINGTON HIGHWAY OPERATIONS PROCUREMENT - AC CONVERSION	OTH	2024	2300	1840	460	0	
STATEWIDE	170S-SNHS	VARIOUS	STATEWIDE	CE SIGN SUPPORT INSPECTION - NHS ROADS - AC CONVERSION	OTH	2024	2250	1800	450	0	
<b>2024 Totals:</b>							<b>9350</b>	<b>7480</b>	<b>1870</b>	<b>0</b>	
CAPITOL	0093-XHOC	VARIOUS	NEWINGTON	NEWINGTON HIGHWAY OPERATIONS CENTER - AC CONVERSION	OTH	FYI	4800	3840	960	0	
CAPITOL	0093-XPRO	VARIOUS	NEWINGTON	NEWINGTON HIGHWAY OPERATIONS PROCUREMENT - AC CONVERSION	OTH	FYI	2300	1840	460	0	
STATEWIDE	170S-SNHS	VARIOUS	STATEWIDE	CE SIGN SUPPORT INSPECTION - NHS ROADS - AC CONVERSION	OTH	FYI	2250	1800	450	0	
<b>FYI Totals:</b>							<b>9350</b>	<b>7480</b>	<b>1870</b>	<b>0</b>	

Capitol Region Transportation Improvement Program  
FFY2021-2024 **DRAFT**

Region	Proj	RouteSystem	Town	Description	Phase	Year	TOT \$000s	Fed \$000s	State \$000s	Local \$000s	Comment
<b>NATIONAL HIGHWAY PERFORMANCE PROGRAM - BRIDGE</b>											
CAPITOL	0063-0654	I-84 TR 825	HARTFORD	NHS - REHAB BR 01686B o/ US 44 & COLUMBUS BLVD - AC CONVERSION	CON	2021	5	4	0	0	
CAPITOL	0165-0509	I-91	WINDSOR LOCKS	REHAB BR 00454 OVER RIVER, AMTRAK & 159 - AC CONVERSION	CON	2021	15556	14000	1556	0	
CAPITOL	0165-0509	I-91	WINDSOR LOCKS	REHAB BR 00454 OVER RIVER, AMTRAK & 159 - AC ENTRY	CON	2021	0	0	0	0	
STATEWIDE	0170-3548	VARIOUS	STATEWIDE	PIN & HANGER ASSEMBLIES FOR FRACTURE CRITICAL INTERSTATE NBI BRIDGES	ROW	2021	50	45	5	0	
STATEWIDE	0170-3548	VARIOUS INTERSTATE	STATEWIDE	PIN & HANGER ASSEMBLIES FOR FRACTURE CRITICAL INTERSTATE NBI BRIDGES	FD	2021	150	135	15	0	
STATEWIDE	170C-ENHS	VARIOUS	STATEWIDE	CE BRIDGE INSPECTION - NHS ROADS, NBI BRIDGES ONLY - AC ENTRY	OTH	2021	0	0	0	0	
STATEWIDE	170C-ENHS	VARIOUS	STATEWIDE	CE BRIDGE INSPECTION - NHS ROADS, NBI BRIDGES ONLY - AC CONVERSION	OTH	2021	15000	12000	3000	0	
STATEWIDE	170S-FNHS	VARIOUS	STATEWIDE	SF BRIDGE INSPECTION - NHS ROADS - AC ENTRY	OTH	2021	0	0	0	0	
STATEWIDE	170S-FNHS	VARIOUS	STATEWIDE	SF BRIDGE INSPECTION - NHS ROADS - AC CONVERSION	OTH	2021	2000	1600	400	0	
STATEWIDE	BRDG-LRNH	VARIOUS	STATEWIDE	LOAD RATINGS FOR BRIDGES - NHS ROADS - AC ENTRY	OTH	2021	0	0	0	0	
STATEWIDE	BRDG-LRNH	VARIOUS	STATEWIDE	LOAD RATINGS FOR BRIDGES - NHS ROADS - AC CONVERSION	OTH	2021	2000	1600	400	0	
<b>2021 Totals:</b>							<b>34761</b>	<b>29384</b>	<b>5376</b>	<b>0</b>	

Capitol Region Transportation Improvement Program  
FFY2021-2024 **DRAFT**

Region	Proj	RouteSystem	Town	Description	Phase	Year	TOT \$000s	Fed \$000s	State \$000s	Local \$000s	Comment
<b>NATIONAL HIGHWAY PERFORMANCE PROGRAM - BRIDGE</b>											
CAPITOL	0165-0509	I-91	WINDSOR LOCKS	REHAB BR 00454 OVER RIVER, AMTRAK & 159 - AC CONVERSION	CON	2022	16244	14620	1624	0	
STATEWIDE	170C-ENHS	VARIOUS	STATEWIDE	CE BRIDGE INSPECTION - NHS ROADS, NBI BRIDGES ONLY - AC CONVERSION	OTH	2022	15000	12000	3000	0	
STATEWIDE	170S-FNHS	VARIOUS	STATEWIDE	SF BRIDGE INSPECTION - NHS ROADS - AC CONVERSION	OTH	2022	2000	1600	400	0	
STATEWIDE	BRDG-LRNH	VARIOUS	STATEWIDE	LOAD RATINGS FOR BRIDGES - NHS ROADS - AC CONVERSION	OTH	2022	2000	1600	400	0	
<b>2022 Totals:</b>							<b>35244</b>	<b>29820</b>	<b>5424</b>	<b>0</b>	
STATEWIDE	0170-3548	VARIOUS INTERSTATE	STATEWIDE	PIN & HANGER ASSEMBLIES FOR FRACTURE CRITICAL INTERSTATE NBI BRIDGES	CON	2023	16600	14940	1660	0	
STATEWIDE	170C-ENHS	VARIOUS	STATEWIDE	CE BRIDGE INSPECTION - NHS ROADS, NBI BRIDGES ONLY - AC CONVERSION	OTH	2023	15000	12000	3000	0	
STATEWIDE	170S-FNHS	VARIOUS	STATEWIDE	SF BRIDGE INSPECTION - NHS ROADS - AC CONVERSION	OTH	2023	2000	1600	400	0	
STATEWIDE	BRDG-LRNH	VARIOUS	STATEWIDE	LOAD RATINGS FOR BRIDGES - NHS ROADS - AC CONVERSION	OTH	2023	2000	1600	400	0	
<b>2023 Totals:</b>							<b>35600</b>	<b>30140</b>	<b>5460</b>	<b>0</b>	
STATEWIDE	170C-ENHS	VARIOUS	STATEWIDE	CE BRIDGE INSPECTION - NHS ROADS, NBI BRIDGES ONLY - AC CONVERSION	OTH	2024	15000	12000	3000	0	
STATEWIDE	170S-FNHS	VARIOUS	STATEWIDE	SF BRIDGE INSPECTION - NHS ROADS - AC CONVERSION	OTH	2024	2000	1600	400	0	
STATEWIDE	BRDG-LRNH	VARIOUS	STATEWIDE	LOAD RATINGS FOR BRIDGES - NHS ROADS - AC CONVERSION	OTH	2024	2000	1600	400	0	
<b>2024 Totals:</b>							<b>19000</b>	<b>15200</b>	<b>3800</b>	<b>0</b>	

Capitol Region Transportation Improvement Program  
FFY2021-2024 **DRAFT**

Region	Proj	RouteSystem	Town	Description	Phase	Year	TOT \$000s	Fed \$000s	State \$000s	Local \$000s	Comment
NATIONAL HIGHWAY PERFORMANCE PROGRAM - BRIDGE											
STATEWIDE	170C-ENHS	VARIOUS	STATEWIDE	CE BRIDGE INSPECTION- NHS ROADS, NBI BRIDGES ONLY - AC CONVERSION	OTH	FYI	15000	12000	3000	0	
STATEWIDE	170S-FNHS	VARIOUS	STATEWIDE	SF BRIDGE INSPECTION - NHS ROADS - AC CONVERSION	OTH	FYI	2000	1600	400	0	
STATEWIDE	BRDG-LRNH	VARIOUS	STATEWIDE	LOAD RATINGS FOR BRIDGES - NHS ROADS - AC CONVERSION	OTH	FYI	2000	1600	400	0	
FYI Totals:							19000	15200	3800	0	
SECTION 125 - EARMARK											
CAPITOL	0165-0468	CT20 @ CT75	WINDSOR LOCKS	REALIGN CT 20 OFF-RAMP TO CT 75	ROW	2021	50	50	0	0	
2021 Totals:							50	50	0	0	
CAPITOL	0165-0468	CT20 @ CT75	WINDSOR LOCKS	REALIGN CT 20 OFF-RAMP TO CT 75	CON	2022	425	425	0	0	
2022 Totals:							425	425	0	0	

Capitol Region Transportation Improvement Program  
FFY2021-2024 **DRAFT**

Region	Proj	RouteSystem	Town	Description	Phase	Year	TOT \$000s	Fed \$000s	State \$000s	Local \$000s	Comment
STP-ANYWHERE											
CAPITOL	0063-0725	MISC	HARTFORD	DRS: MOTOR FUEL TAX ENFORCEMENT - AC ENTRY	CON	2021	0	0	0	0	
CAPITOL	0063-0725	MISC	HARTFORD	DRS: MOTOR FUEL TAX ENFORCEMENT - AC CONVERSION	CON	2021	35	35	0	0	
STATEWIDE	0170-3417	VARIOUS	STATEWIDE	MAST ARM & SPAN POLE INSPECTIONS - AC ENTRY	OTH	2021	0	0	0	0	
STATEWIDE	0170-3417	VARIOUS	STATEWIDE	MAST ARM & SPAN POLE INSPECTIONS - AC CONVERSION	OTH	2021	600	480	120	0	
STATEWIDE	0170-3439		STATEWIDE	FEDERAL ELIGIBLE PE: TA PROGRAM PROJ DEV/SCOPING - AC ENTRY	PE	2021	0	0	0	0	
STATEWIDE	0170-3439		STATEWIDE	FEDERAL ELIGIBLE PE: TA PROGRAM PROJ DEV/SCOPING - AC CONVERSION	PE	2021	660	528	132	0	
DISTRICT 1	0171-0441	VARIOUS	DISTRICT 1	REPLACE TRAFFIC SIGNALS AT VARIOUS LOCATIONS	CON	2021	3657	3657	0	0	
DISTRICT 2	0172-0476	VARIOUS	DISTRICT 2	REPLACE TRAFFIC CONTROL SIGNALS AT VARIOUS LOCATIONS	CON	2021	3500	3500	0	0	
DISTRICT 4	0174-0424	VARIOUS	DISTRICT 4	REPLACE TRAFFIC SIGNALS AT VARIOUS LOCATIONS	CON	2021	4949	4949	0	0	
STATEWIDE	170S-SNON	VARIOUS	STATEWIDE	CE SIGN SUPPORT INSPECTION - NON-NHS ROADS - AC ENTRY	OTH	2021	0	0	0	0	
STATEWIDE	170S-SNON	VARIOUS	STATEWIDE	CE SIGN SUPPORT INSPECTION - NON-NHS ROADS - AC CONVERSION	OTH	2021	500	400	100	0	
STATEWIDE	PVMT-MARK		STATEWIDE	LINE STRIPING/PAVEMENT MARKINGS - AC ENTRY	CON	2021	0	0	0	0	
STATEWIDE	PVMT-MARK		STATEWIDE	LINE STRIPING/PAVEMENT MARKINGS - AC CONVERSION	CON	2021	8000	8000	0	0	
<b>2021 Totals:</b>							<b>21901</b>	<b>21549</b>	<b>352</b>	<b>0</b>	

Capitol Region Transportation Improvement Program  
FFY2021-2024 **DRAFT**

Region	Proj	RouteSystem	Town	Description	Phase	Year	TOT \$000s	Fed \$000s	State \$000s	Local \$000s	Comment
<b>STP-ANYWHERE</b>											
CAPITOL	0051-0275	CT 167	FARMINGTON	CULVERT REPLACEMENT & DRAINAGE IMPROVEMENTS	CON	2022	1944	1555	389	0	
STATEWIDE	0170-3417	VARIOUS	STATEWIDE	MAST ARM & SPAN POLE INSPECTIONS - AC CONVERSION	OTH	2022	150	120	30	0	
STATEWIDE	170S-SNON	VARIOUS	STATEWIDE	CE SIGN SUPPORT INSPECTION- NON-NHS ROADS - AC CONVERSION	OTH	2022	500	400	100	0	
STATEWIDE	PVMT-MARK		STATEWIDE	LINE STRIPING/PAVEMENT MARKINGS - AC CONVERSION	CON	2022	8000	8000	0	0	
<b>2022 Totals:</b>							<b>10594</b>	<b>10075</b>	<b>519</b>	<b>0</b>	
STATEWIDE	170S-SNON	VARIOUS	STATEWIDE	CE SIGN SUPPORT INSPECTION - NON-NHS ROADS - AC CONVERSION	OTH	2023	500	400	100	0	
STATEWIDE	PVMT-MARK		STATEWIDE	LINE STRIPING/PAVEMENT MARKINGS - AC CONVERSION	CON	2023	8000	8000	0	0	
<b>2023 Totals:</b>							<b>8500</b>	<b>8400</b>	<b>100</b>	<b>0</b>	
STATEWIDE	170S-SNON	VARIOUS	STATEWIDE	CE SIGN SUPPORT INSPECTION - NON-NHS ROADS - AC CONVERSION	OTH	2024	500	400	100	0	
STATEWIDE	MASP-INSP	VARIOUS	STATEWIDE	MAST ARM & SPAN POLE INSPECTIONS	OTH	2024	700	560	140	0	
STATEWIDE	PVMT-MARK		STATEWIDE	LINE STRIPING/PAVEMENT MARKINGS - AC CONVERSION	CON	2024	8000	8000	0	0	
<b>2024 Totals:</b>							<b>9200</b>	<b>8960</b>	<b>240</b>	<b>0</b>	
STATEWIDE	170S-SNON	VARIOUS	STATEWIDE	CE SIGN SUPPORT INSPECTION - NON-NHS ROADS - AC CONVERSION	OTH	FYI	500	400	100	0	
<b>FYI Totals:</b>							<b>500</b>	<b>400</b>	<b>100</b>	<b>0</b>	



Capitol Region Transportation Improvement Program  
FFY2021-2024 **DRAFT**

Region	Proj	RouteSystem	Town	Description	Phase	Year	TOT \$000s	Fed \$000s	State \$000s	Local \$000s	Comment
<b>STP-ANYWHERE BRIDGE</b>											
STATEWIDE	170C-ENON	VARIOUS	STATEWIDE	CE BRIDGE INSPECTION - NON-NHS ROADS - AC ENTRY	OTH	2021	0	0	0	0	
STATEWIDE	170C-ENON	VARIOUS	STATEWIDE	CE BRIDGE INSPECTION - NON-NHS ROADS - AC CONVERSION	OTH	2021	8000	6400	1600	0	
STATEWIDE	170S-FNON	VARIOUS	STATEWIDE	SF BRIDGE INSPECTION - NON-NHS ROADS - AC ENTRY	OTH	2021	0	0	0	0	
STATEWIDE	170S-FNON	VARIOUS	STATEWIDE	SF BRIDGE INSPECTION - NON-NHS ROADS - AC CONVERSION	OTH	2021	2500	2000	500	0	
STATEWIDE	BRDG-LRNO	VARIOUS	STATEWIDE	LOAD RATINGS FOR BRIDGES - NON-NHS ROADS - AC ENTRY	OTH	2021	0	0	0	0	
STATEWIDE	BRDG-LRNO	VARIOUS	STATEWIDE	LOAD RATINGS FOR BRIDGES - NON-NHS ROADS - AC CONVERSION	OTH	2021	1000	800	200	0	
<b>2021 Totals:</b>							<b>11500</b>	<b>9200</b>	<b>2300</b>	<b>0</b>	
STATEWIDE	170C-ENON	VARIOUS	STATEWIDE	CE BRIDGE INSPECTION - NON-NHS ROADS - AC CONVERSION	OTH	2022	8000	6400	1600	0	
STATEWIDE	170S-FNON	VARIOUS	STATEWIDE	SF BRIDGE INSPECTION - NON-NHS ROADS - AC CONVERSION	OTH	2022	2500	2000	500	0	
STATEWIDE	BRDG-LRNO	VARIOUS	STATEWIDE	LOAD RATINGS FOR BRIDGES - NON-NHS ROADS - AC CONVERSION	OTH	2022	1000	800	200	0	
<b>2022 Totals:</b>							<b>11500</b>	<b>9200</b>	<b>2300</b>	<b>0</b>	
STATEWIDE	170C-ENON	VARIOUS	STATEWIDE	CE BRIDGE INSPECTION - NON-NHS ROADS - AC CONVERSION	OTH	2023	8000	6400	1600	0	
STATEWIDE	170S-FNON	VARIOUS	STATEWIDE	SF BRIDGE INSPECTION - NON-NHS ROADS - AC CONVERSION	OTH	2023	2500	2000	500	0	
STATEWIDE	BRDG-LRNO	VARIOUS	STATEWIDE	LOAD RATINGS FOR BRIDGES - NON-NHS ROADS - AC CONVERSION	OTH	2023	1000	800	200	0	
<b>2023 Totals:</b>							<b>11500</b>	<b>9200</b>	<b>2300</b>	<b>0</b>	

Capitol Region Transportation Improvement Program  
FFY2021-2024 **DRAFT**

Region	Proj	RouteSystem	Town	Description	Phase	Year	TOT \$000s	Fed \$000s	State \$000s	Local \$000s	Comment
STP-ANYWHERE BRIDGE											
STATEWIDE	170C-ENON	VARIOUS	STATEWIDE	CE BRIDGE INSPECTION - NON-NHS ROADS - AC CONVERSION	OTH	2024	8000	6400	1600	0	
STATEWIDE	170S-FNON	VARIOUS	STATEWIDE	SF BRIDGE INSPECTION - NON-NHS ROADS - AC CONVERSION	OTH	2024	2500	2000	500	0	
STATEWIDE	BRDG-LRNO	VARIOUS	STATEWIDE	LOAD RATINGS FOR BRIDGES - NON-NHS ROADS - AC CONVERSION	OTH	2024	1000	800	200	0	
2024 Totals:							11500	9200	2300	0	
STATEWIDE	170C-ENON	VARIOUS	STATEWIDE	CE BRIDGE INSPECTION - NON-NHS ROADS - AC CONVERSION	OTH	FYI	8000	6400	1600	0	
STATEWIDE	170S-FNON	VARIOUS	STATEWIDE	SF BRIDGE INSPECTION - NON-NHS ROADS - AC CONVERSION	OTH	FYI	2500	2000	500	0	
STATEWIDE	BRDG-LRNO	VARIOUS	STATEWIDE	LOAD RATINGS FOR BRIDGES - NON-NHS ROADS - AC CONVERSION	OTH	FYI	1000	800	200	0	
FYI Totals:							11500	9200	2300	0	
STP-OTHER											
CAPITOL	0134-0148	CT 32/CT 190	STAFFORD	MODERN ROUNDABOUT AT ROUTES 32 & 190	CON	2021	1000	800	200	0	
2021 Totals:							1000	800	200	0	

Region	Proj	RouteSystem	Town	Description	Phase	Year	TOT \$000s	Fed \$000s	State \$000s	Local \$000s	Comment
STP-RURAL											
CAPITOL	0142-0152	CT 74	TOLLAND	REPLACE BR 01120 OVER SKUNGAMAUG RIVER	FD	2021	300	240	60	0	
CAPITOL	0142-0152	CT 74	TOLLAND	REPLACE BR 01120 OVER SKUNGAMAUG RIVER	ROW	2021	50	40	10	0	
2021 Totals:							350	280	70	0	
CAPITOL	0142-0152	CT 74	TOLLAND	REPLACE BR 01120 OVER SKUNGAMAUG RIVER	CON	FYI	1600	1280	320	0	
FYI Totals:							1600	1280	320	0	
STP-SPRINGFIELD											
CAPITOL	0046-0127	CT 191	EAST WINDSOR	REPLACE BR 01524 OVER SCANTIC RIVER	ROW	2021	50	40	10	0	
CAPITOL	0046-0127	CT 191	EAST WINDSOR	REPLACE BR 01524 OVER SCANTIC RIVER	FD	2021	300	240	60	0	
2021 Totals:							350	280	70	0	
CAPITOL	0046-0127	CT 191	EAST WINDSOR	REPLACE BR 01524 OVER SCANTIC RIVER	CON	2022	2135	1708	427	0	
2022 Totals:							2135	1708	427	0	

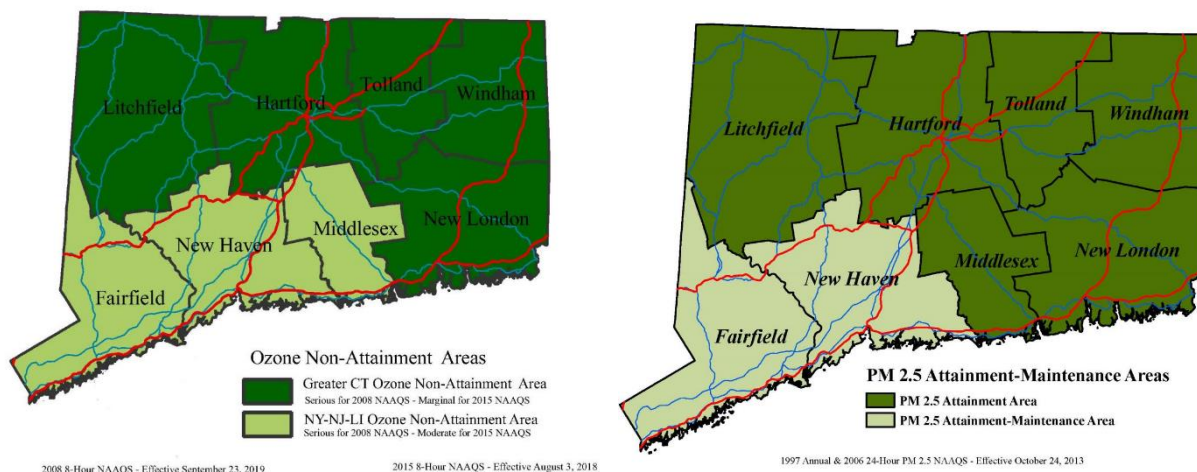
Region	Proj	RouteSystem	Town	Description	Phase	Year	TOT \$000s	Fed \$000s	State \$000s	Local \$000s	Comment
<b>STP-URBAN</b>											
CAPITOL	0011-0157	CT 189	BLOOMFIELD	CONSTRUCT ROUNDABOUTS AT CT 178 & WINTONBURY AVE	FD	2021	500	400	100	0	
CAPITOL	0011-0157	CT 189	BLOOMFIELD	CONSTRUCT ROUNDABOUTS AT CT 178 & WINTONBURY AVE	ROW	2021	90	72	18	0	
CAPITOL	0042-0318	BREWER STREET	EAST HARTFORD	RECONSTRUCTION OF BREWER ST	CON	2021	6100	4880	610	610	
CAPITOL	0051-0274	I-84/US 6/SR 531	FARMINGTON	REALIGN I-84 EB ON-RAMP AND US 6	CON	2021	3267	2614	653	0	
CAPITOL	0076-0220	CT 83 & OAKLAND ST	MANCHESTER	TWO ROUNDABOUTS - 83 AT OAKLAND; OAKLAND AT LOCAL RDS	CON	2021	5500	4400	1100	0	
<b>2021 Totals:</b>							<b>15457</b>	<b>12366</b>	<b>2481</b>	<b>610</b>	
CAPITOL	0011-0157	CT 189	BLOOMFIELD	CONSTRUCT ROUNDABOUTS AT CT 178 & WINTONBURY AVE	CON	2022	6290	5032	1258	0	
CAPITOL	0165-0468	CT20 @ CT75	WINDSOR LOCKS	REALIGN CT 20 OFF-RAMP TO CT 75	CON	2022	2782	2226	278	278	
<b>2022 Totals:</b>							<b>9072</b>	<b>7258</b>	<b>1536</b>	<b>278</b>	

## **Section B: Air Quality Conformity Analysis Summary**

for the FFY2021-2024 TIP  
and the 2045 Metropolitan Transportation Plan

Each regional planning agency (including CRCOG) is required to demonstrate that its Metropolitan Transportation Plan (MTP) and Transportation Improvement Program (TIP) do not violate the federal Clean Air Act. This demonstration requires tests for several types of pollutants, for several different analysis years, and for several different analysis areas or districts as explained below. For reasons also described below, the Connecticut Department of Transportation (CTDOT) performs a statewide analysis, with all Plans and TIP projects in the state analyzed together.

**Air Quality Analysis Districts.** The federal air quality districts are shown in the figures below. CRCOG is part of the Greater Connecticut Ozone Non-Attainment Area. The Greater Connecticut district includes other planning regions in addition to CRCOG. It uses county boundaries and includes the following counties: Hartford, Tolland, Litchfield, Windham, and New London. The Greater Connecticut district is classified as a “marginal” non-attainment area. CRCOG is in an attainment area for fine particulate matter (PM<sub>2.5</sub>).



Since the air quality districts overlap many regional planning districts, the emissions analysis is coordinated by CTDOT to include the TIPs and MTPs of several regions. Each region submits its draft TIP and MTP to CTDOT where the projects are combined to analyze the emissions impacts within each air quality district. CTDOT's most recent Air Quality Conformity determination was completed in April 2020. That full document is available on CTDOT's STIP website and on CRCOG's TIP website.

**Types of Pollutants.** The air quality analysis for ozone includes calculations of vehicle emissions of two types of pollutants:

1. Hydrocarbons (HC or VOC-Volatile Organic Compounds)
2. Nitrogen Oxides (NO<sub>x</sub>)

**Emissions Test.** Under conformity rules provided by the U.S. Environmental Protection Agency (EPA), a test is applied to determine if the TIP or the MTP violate the Clean Air Act. In March 2017, EPA informed the CT Department of Environmental Protection that the EPA had determined the 2017 Motor Vehicle Emissions Budgets (MVEB) for the Greater Connecticut ozone nonattainment area were adequate determiners of future transportation conformity. Therefore, the future year emissions are compared to the 2017 MVEB to determine compliancy.

In order to be compliant, VOC and NO<sub>x</sub> transportation emissions must be less than the following 2017 transportation emission budgets:

- VOC: 15.9 tons/day
- NO<sub>x</sub>: 22.2 tons/day

**Findings and Conclusions.** The analysis conducted by CTDOT indicates that the Capitol Region's MTP and TIP, when combined with all other regional plans and TIPs in the relevant air quality district, pass the test required under current conformity rules. The Region is in conformity with the federal Clean Air Act and the Connecticut State Implementation Plan. The quantitative analysis required for this determination are summarized in the table below.

<b><i>Ozone Conformity - NO<sub>x</sub> and VOC Emissions Budget Test Results for the Greater Connecticut Ozone Nonattainment Area (tons per day)</i></b>						
<b>Year</b>	<b>Results</b>		<b>Budget</b>		<b>Difference</b>	
	<b>VOC</b>	<b>NO<sub>x</sub></b>	<b>VOC</b>	<b>NO<sub>x</sub></b>	<b>VOC</b>	<b>NO<sub>x</sub></b>
2020	15.31	20.06	15.90	22.20	- 0.59	- 2.14
2025	12.65	13.25	15.90	22.20	- 3.25	- 8.95
2035	7.64	7.83	15.90	22.20	- 8.26	- 14.37
2045	6.47	6.98	15.90	22.20	- 9.43	- 15.22

**VOC: Hydrocarbons or Volatile Organic Compounds**

**NO<sub>x</sub>: Nitrogen Oxides**

## ***Section C: Capitol Region Bridge Projects***

The following list of bridge projects in the Capitol Region is for information purposes only. The TIP gives approval to the entire Statewide Bridge Program (see Section A), and not for individual projects. Individual projects are moved forward at CTDOT's discretion. The list below is updated through August 19, 2020. The project list is updated regularly and included on CRCOG's TIP website and CTDOT's STIP website.



Capitol Region Transportation Improvement Program  
FFY2021-2024 **DRAFT**

REGION	PROJECT #	STIP CODE	PHASE	YEAR	ROUTE	TOWN	DESCRIPTION	TOTAL COST	FEDERAL SHARE	STATE SHARE	LOCAL SHARE
10	0001-0106	BRZ	PE	2020	Bunker Hill Road	ANDOVER	Replace Br 04583 o/ Hop River (PD)	\$ 400,000	\$ 320,000	\$ 80,000	\$ -
10	0001-0106	BRZ	RW	2022	Bunker Hill Road	ANDOVER	Replace Br 04583 o/ Hop River	\$ 50,000	\$ 40,000	\$ -	\$ 10,000
10	0001-0106	BRZ	PE	2022	Bunker Hill Road	ANDOVER	Replace Br 04583 o/ Hop River (FD)	\$ 250,000	\$ 200,000	\$ 50,000	\$ -
10	0001-0106	BRZ	CN	2023	Bunker Hill Road	ANDOVER	Replace Br 04583 o/ Hop River	\$ 2,522,500	\$ 2,018,000	\$ 32,000	\$ 472,500
10	0007-0190	BRZ	CN	2020	Various	BERLIN	Preservation of Bridge Nos. 04476, 05224, 06122 and 06123	\$ 2,075,540	\$ 1,660,432	\$ -	\$ 415,108
10	0011-0156	STPA-BRX	PE	2020	CT 178	BLOOMFIELD	Replace Br 01489 over Beaman Brook (FD)	\$ 300,000	\$ 240,000	\$ 60,000	\$ -
10	0011-0156	STPA-BRX	RW	2020	CT 178	BLOOMFIELD	Replace Br 01489 over Beaman Brook	\$ 55,000	\$ 44,000	\$ 11,000	\$ -
10	0011-0158	STPA-BRX	PE	2020	CT 185	BLOOMFIELD	Replace Br 05576 (Culvert) o/ Tumbledown Brook Channel (FD)	\$ 260,000	\$ 208,000	\$ 52,000	\$ -
10	0011-0158	STPA-BRX	RW	2020	CT 185	BLOOMFIELD	Replace Br 05576 (Culvert) o/ Tumbledown Brook Channel	\$ 51,000	\$ 40,800	\$ 10,200	\$ -
10	0011-0158	STPA-BRX	CN	2022	CT 185	BLOOMFIELD	Replace Br 05576 (Culvert) o/ Tumbledown Brook Channel	\$ 1,200,000	\$ 960,000	\$ 240,000	\$ -
10	0032-0149	NHPP-BRX	PE	2020	US 44	COVENTRY	Replace Br 06851 (Culvert) o/ Olson's Brk (FD)	\$ 200,000	\$ 160,000	\$ 40,000	\$ -
10	0032-0149	NHPP-BRX	RW	2020	US 44	COVENTRY	Replace Br 06851 (Culvert) o/ Olson's Brook	\$ 25,000	\$ 20,000	\$ 50,000	\$ -
10	0032-0150	BRZ	RW	2021	Hop River Rd	COVENTRY	Replace Br 04446 o/ Hop River	\$ 50,000	\$ 40,000	\$ -	\$ 10,000
10	0032-0150	BRZ	PE	2021	Hop River Rd	COVENTRY	Replace Br 04446 o/ Hop River (FD)	\$ 250,000	\$ 200,000	\$ 50,000	\$ -
10	0032-0150	BRZ	CN	2022	Hop River Rd	COVENTRY	Replace Br 04446 o/ Hop River	\$ 3,425,000	\$ 2,740,000	\$ 32,000	\$ 653,000
10	0042-0325	NHPP-BRX	PE	2020	I-84	EAST HARTFORD	NHS - Rehab Br 05844A o/ CT 15 (FD)	\$ 500,000	\$ 450,000	\$ 50,000	\$ -
10	0042-0325	NHPP-BRX	CN	2021	I-84	EAST HARTFORD	NHS - Rehab Br 05844A o/ CT 15	\$ 4,000,000	\$ 3,600,000	\$ 400,000	\$ -
10	0047-0120	BRZ	PE	2021	Strawberry Rd	ELLINGTON	Replace Br 06141 o/ Abbey Brook (FD)	\$ 250,000	\$ 200,000	\$ 50,000	\$ -
10	0047-0120	BRZ	RW	2021	Strawberry Rd	ELLINGTON	Replace Br 06141 o/ Abbey Brook	\$ 50,000	\$ 40,000	\$ -	\$ 10,000
10	0047-0120	BRZ	CN	2022	Strawberry Rd	ELLINGTON	Replace Br 06141 o/ Abbey Brook	\$ 3,087,500	\$ 2,470,000	\$ 32,000	\$ 585,500
10	0048-0198	BRZ	RW	2020	South River St	ENFIELD	Replace Br 04506 over Freshwater Brook	\$ 320,000	\$ 256,000	\$ -	\$ 64,000
10	0048-0198	BRZ	PE	2020	South River St	ENFIELD	Replace Br 04506 over Freshwater Brook (FD)	\$ 275,000	\$ 220,000	\$ -	\$ 55,000
10	0048-0198	BRZ	CN	2022	South River St	ENFIELD	Replace Br 04506 over Freshwater Brook	\$ 3,500,000	\$ 2,800,000	\$ -	\$ 700,000
10	0048-0200	NHPP-BRX	PE	2020	I-91	ENFIELD	Rehab Br 05585 (Culvert) o/ Grape Brook (PD)	\$ 300,000	\$ 270,000	\$ 30,000	\$ -
10	0048-0200	NHPP-BRX	RW	2022	I-91	ENFIELD	Rehab Br 05585 (Culvert) o/ Grape Brook	\$ 50,000	\$ 45,000	\$ 5,000	\$ -
10	0048-0200	NHPP-BRX	PE	2022	I-91	ENFIELD	Rehab Br 05585 (Culvert) o/ Grape Brook (FD)	\$ 200,000	\$ 180,000	\$ 20,000	\$ -
10	0048-0201	NHPP-BRX	PE	2020	Enfield	I-91	Rehab Br 05586 (Culvert) o/ Brook (PD)	\$ 300,000	\$ 270,000	\$ 30,000	\$ -
10	0048-0201	NHPP-BRX	RW	2022	Enfield	I-91	Rehab Br 05586 (Culvert) o/ Brook	\$ 50,000	\$ 45,000	\$ 5,000	\$ -
10	0048-0201	NHPP-BRX	PE	2022	Enfield	I-91	Rehab Br 05586 (Culvert) o/ Brook (FD)	\$ 200,000	\$ 180,000	\$ 20,000	\$ -
10	0051-0272	STPA-BRX	CN	2020	CT 177	FARMINGTON	Rehab Br 01487 over Farmington River	\$ 702,200	\$ 561,760	\$ 140,440	\$ -
10	0051-0272	STPA-BRX	CN	2021	CT 177	FARMINGTON	Rehab Br 01487 over Farmington River	\$ -	\$ -	\$ -	\$ -
10	0053-0189	NHPP-BRX	CN	2021	CT 17	GLASTONBURY	NHS - Rehab Br 00388 CT 17 NB o/ CT 17 SB Ramp 007	\$ 3,015,521	\$ 2,412,417	\$ 603,104	\$ -
10	0055-0144	BRZ	RW	2021	Moosehorn Rd	GRANBY	Rehab Br 04528 o/ Moosehorn Brook	\$ 50,000	\$ 40,000	\$ -	\$ 10,000
10	0055-0144	BRZ	PE	2021	Moosehorn Rd	GRANBY	Rehab Br 04528 o/ Moosehorn Brook (FD)	\$ 250,000	\$ 200,000	\$ 50,000	\$ -
10	0055-0144	BRZ	CN	2022	Moosehorn Rd	GRANBY	Rehab Br 04528 o/ Moosehorn Brook	\$ 2,480,000	\$ 1,984,000	\$ 32,000	\$ 464,000
10	0055-0145	BRZ	PE	2022	Simsbury Rd	GRANBY	Rehab Br 04525 o/ West Branch Salmon Brk (FD)	\$ 250,000	\$ 200,000	\$ 50,000	\$ -
10	0055-0145	BRZ	RW	2022	Simsbury Rd	GRANBY	Rehab Br 04525 o/ West Branch Salmon Brk	\$ 50,000	\$ 40,000	\$ -	\$ 10,000
10	0055-0145	BRZ	CN	2023	Simsbury Rd	GRANBY	Rehab Br 04525 o/ West Branch Salmon Brk	\$ 2,480,000	\$ 1,984,000	\$ 32,000	\$ 464,000
10	0055-0146	BRZ	RW	2021	Donahue Rd	GRANBY	Rehab Br 04516 o/ Belden Brook	\$ 50,000	\$ 40,000	\$ -	\$ 10,000

Capitol Region Transportation Improvement Program  
FFY2021-2024 **DRAFT**

REGION	PROJECT #	STIP CODE	PHASE	YEAR	ROUTE	TOWN	DESCRIPTION	TOTAL COST	FEDERAL SHARE	STATE SHARE	LOCAL SHARE
10	0055-0146	BRZ	PE	2021	Donahue Rd	GRANBY	Rehab Br 04516 o/ Belden Brook (FD)	\$ 250,000	\$ 200,000	\$ 50,000	\$ -
10	0055-0146	BRZ	CN	2022	Donahue Rd	GRANBY	Rehab Br 04516 o/ Belden Brook	\$ 2,480,000	\$ 1,984,000	\$ 32,000	\$ 464,000
10	0063-0654	NHPP-BRX	CN	2020	I-84 TR825	HARTFORD	NHS - Rehab Br 01686B o/ US 44 & Columbus Blvd	\$ 5,500,000	\$ 4,500,000	\$ 1,000,000	\$ -
10	0063-0654	NHPP-BRX	CN	2021	I-84 TR825	HARTFORD	NHS - Rehab Br 01686B o/ US 44 & Columbus Blvd	\$ 4,500,000	\$ 4,500,000	\$ -	\$ -
10	0063-0726	NHPP-BRX	PE	2020	I-91 SB	HARTFORD	NHS - Rehab Br 01469B o/ CSRR, SR 598 & TR803 (PD)	\$ 1,237,500	\$ 1,000,000	\$ 237,500	\$ -
10	0063-0726	NHPP-BRX	PE	2020	I-91 SB	HARTFORD	NHS - Rehab Br 01469B o/ CSRR, SR 598 & TR803 (PD)	\$ 1,137,500	\$ 1,137,500	\$ -	\$ -
10	0063-0726	NHPP-BRX	PE	2021	I-91 SB	HARTFORD	NHS - Rehab Br 01469B o/ CSRR, SR 598 & TR803 (FD)	\$ 2,375,000	\$ 2,137,500	\$ 237,500	\$ -
10	0063-0726	NHPP-BRX	RW	2021	I-91 SB	HARTFORD	NHS - Rehab Br 01469B o/ CSRR, SR 598 & TR803	\$ 50,000	\$ 45,000	\$ 5,000	\$ -
10	0076-0223	NHPP-BRX	RW	2020	I-384	MANCHESTER	Rehab Br 06884 & 06885 (culverts) o/ Porter Brk	\$ 25,000	\$ 22,500	\$ 2,500	\$ -
10	0076-0223	NHPP-BRX	PE	2020	I-384	MANCHESTER	Rehab Br 06884 & 06885 (culverts) o/ Porter Brk (FD)	\$ 300,000	\$ 270,000	\$ 30,000	\$ -
10	0078-0092	NHPP-BRX	CN	2020	CT 2	MARLBOROUGH	NHS - Rehab Br 01708 & 03374 o/ West Rd	\$ 3,243,160	\$ 2,594,528	\$ 648,632	\$ -
10	0088-0196	STPA-BRX	PE	2021	High Street	NEW BRITAIN	Bridge 04247 Safety Improvements o/ CT 72 (PD)	\$ 325,000	\$ 260,000	\$ 65,000	\$ -
10	0088-0196	STPA-BRX	PE	2022	High Street	NEW BRITAIN	Bridge 04247 Safety Improvements o/ CT 72 (FD)	\$ 190,000	\$ 152,000	\$ 38,000	\$ -
10	0088-0196	STPA-BRX	CN	2024	High Street	NEW BRITAIN	Bridge 04247 Safety Improvements o/ CT 72	\$ 100,000	\$ 800,000	\$ 200,000	\$ -
10	0109-0165	BRZ	CN	2021	Tomlinson Ave	PLAINVILLE	Replace Br 04546 o/ Quinipiac River	\$ 2,000,000	\$ 1,600,000	\$ -	\$ 400,000
10	0109-0174	STPA-BRX	PE	2021	Crooked Street (SR 536)	PLAINVILLE	Replace Br 02214 o/ Pan Am RR (PD)	\$ 675,000	\$ 540,000	\$ 135,000	\$ -
10	0109-0174	STPA-BRX	PE	2022	Crooked Street (SR 536)	PLAINVILLE	Replace Br 02214 o/ Pan Am RR (FD)	\$ 470,000	\$ 376,000	\$ 94,000	\$ -
10	0109-0174	STPA-BRX	RW	2022	Crooked Street (SR 536)	PLAINVILLE	Replace Br 02214 o/ Pan Am RR	\$ 50,000	\$ 40,000	\$ 10,000	\$ -
10	0128-0153	NHPP-BRX	PE	2020	CT 10	SIMSBURY	NHS - Replace Br 00653 o/ Hop Brook (FD)	\$ 350,000	\$ 280,000	\$ 70,000	\$ -
10	0128-0153	NHPP-BRX	RW	2020	CT 10	SIMSBURY	NHS - Replace Br 00653 o/ Hop Brook	\$ 525,000	\$ 420,000	\$ 105,000	\$ -
10	0131-0206	BRZ	CN	2020	Spring Street	SOUTHINGTON	Replace Br 04562 o/ Quinipiac River	\$ 3,297,300	\$ 2,557,840	\$ -	\$ 739,460
10	0132-0139	NHPP-BRX	PE	2020	I-291 & King St	SOUTH WINDSOR	NHS - Rehab Br 05944 o/ Podunk River (FD)	\$ 360,000	\$ 324,000	\$ 36,000	\$ -
10	0132-0139	NHPP-BRX	RW	2020	I-291 & King St	SOUTH WINDSOR	NHS - Rehab Br 05944 o/ Podunk River	\$ 30,000	\$ 27,000	\$ 3,000	\$ -
10	0132-0139	NHPP-BRX	CN	2021	I-291 & King St	SOUTH WINDSOR	NHS - Rehab Br 05944 o/ Podunk River	\$ 4,200,000	\$ 3,780,000	\$ 420,000	\$ -
10	0146-0199	BRZ	CN	2020	Main St	VERNON	Replace Br 04575 o/ Tankerhoosen River	\$ 2,663,600	\$ 2,130,880	\$ -	\$ 532,720
10	0160-0152	NHPP-BRX	PE	2021	I-84	WILLINGTON	Rehab Br 02170 (Culvert) o/ Upper Ruby Brook (PD)	\$ 450,000	\$ 405,000	\$ 45,000	\$ -
10	0160-0152	NHPP-BRX	PE	2022	I-84	WILLINGTON	Rehab Br 02170 (Culvert) o/ Upper Ruby Brook (FD)	\$ 300,000	\$ 270,000	\$ 30,000	\$ -
10	0160-0152	NHPP-BRX	RW	2022	I-84	WILLINGTON	Rehab Br 02170 (Culvert) o/ Upper Ruby Brook	\$ 50,000	\$ 45,000	\$ 5,000	\$ -
10	0164-0242	STPA-BRX	PE	2021	CT 159	WINDSOR	Rehab Br 06574 (Culvert) o/ Mill Brook (FD)	\$ 200,000	\$ 160,000	\$ 40,000	\$ -
10	0164-0242	STPA-BRX	RW	2021	CT 159	WINDSOR	Rehab Br 06574 (Culvert) o/ Mill Brook	\$ 50,000	\$ 40,000	\$ 10,000	\$ -
10	0165-0509	NHPP-BRX	CN	2023	I-91	WINDSOR LOCKS	Rehab Br 00454 o/ River, Amtrak & 159	\$ 17,180,000	\$ 14,000,000	\$ 3,180,000	\$ -
10	0165-0509	NHPP-BRX	CN	2024	I-91	WINDSOR LOCKS	Rehab Br 00454 o/ River, Amtrak & 159	\$ 14,620,000	\$ 14,620,000	\$ -	\$ -
70	0170-3382	NHPP-BRX	OTH	2020	Various	STATEWIDE	Load Ratings for Bridges - NHS Roads (1/1/16-12/31/20)	\$ 3,000,000	\$ 2,400,000	\$ 600,000	\$ -
70	0170-3382	NHPP-BRX	OTH	2020	Various	STATEWIDE	Load Ratings for Bridges - NHS Roads (1/1/16-12/31/20)	\$ 3,000,000	\$ 2,400,000	\$ 600,000	\$ -
70	0170-3383	STPA-BRX	OTH	2020	Various	STATEWIDE	Load Ratings for Bridges - Non-NHS Roads (1/1/16-12/31/20)	\$ 2,240,000	\$ 1,792,000	\$ 448,000	\$ -
70	0170-3383	STPA-BRX	OTH	2020	Various	STATEWIDE	Load Ratings for Bridges - Non-NHS Roads (1/1/16-12/31/20)	\$ 2,280,000	\$ 1,824,000	\$ 456,000	\$ -
70	0170-3411	NHPP-BRX	OTH	2020	Various	STATEWIDE	SF Bridge Insp - NHS Roads (9/1/16 - 8/31/21)	\$ 1,920,450	\$ 1,536,360	\$ 384,090	\$ -
70	0170-3412	STPA-BRX	OTH	2020	Various	STATEWIDE	SF Bridge Insp - Non-NHS Roads (9/1/16 - 8/31/21)	\$ 3,662,130	\$ 2,929,704	\$ 732,426	\$ -

Capitol Region Transportation Improvement Program  
FFY2021-2024 **DRAFT**

REGION	PROJECT #	STIP CODE	PHASE	YEAR	ROUTE	TOWN	DESCRIPTION	TOTAL COST	FEDERAL SHARE	STATE SHARE	LOCAL SHARE
70	0170-3413	NHPP-BRX	OTH	2020	Various	STATEWIDE	CE Bridge Insp - NHS Roads, NBI Bridges Only (9/1/16 - 8/31/21)	\$ 15,887,801	\$ 12,710,241	\$ 3,177,560	\$ -
70	0170-3414	STPA-BRX	OTH	2020	Various	STATEWIDE	CE Bridge Insp - Non-NHS Roads (9/1/16 - 8/31/21)	\$ 5,799,542	\$ 4,639,634	\$ 1,159,908	\$ -
70	0170-3434	STPA-BRX	CN	2020	Various	STATEWIDE	Rapid Response Bridge Repairs by State Forces (thru 12/31/20)	\$ 50,000	\$ 40,000	\$ 10,000	\$ -
70	0170-3521	STPA-BRX	OTH	2020	Various	STATEWIDE	NBI Bridge Scour Monitoring (1/1/19-12/31/23)	\$ 100,000	\$ 80,000	\$ 20,000	\$ -
70	0170-3521	STPA-BRX	OTH	2021	Various	STATEWIDE	NBI Bridge Scour Monitoring (1/1/19-12/31/23)	\$ 100,000	\$ 80,000	\$ 20,000	\$ -
70	0170-3521	STPA-BRX	OTH	2022	Various	STATEWIDE	NBI Bridge Scour Monitoring (1/1/19-12/31/23)	\$ 100,000	\$ 80,000	\$ 20,000	\$ -
70	0170-3521	STPA-BRX	OTH	2023	Various	STATEWIDE	NBI Bridge Scour Monitoring (1/1/19-12/31/23)	\$ 100,000	\$ 80,000	\$ 20,000	\$ -
70	0170-3542	NHPP-BRX	OTH	2020	Various	STATEWIDE	CE Bridge Insp - Uwater - NHS Roads (9/1/19 - 8/31/23)	\$ 600,000	\$ 480,000	\$ 120,000	\$ -
70	0170-3542	NHPP-BRX	OTH	2021	Various	STATEWIDE	CE Bridge Insp - Uwater - NHS Roads (9/1/19 - 8/31/23)	\$ 825,000	\$ 660,000	\$ 165,000	\$ -
70	0170-3542	NHPP-BRX	OTH	2022	Various	STATEWIDE	CE Bridge Insp - Uwater - NHS Roads (9/1/19 - 8/31/23)	\$ 825,000	\$ 660,000	\$ 165,000	\$ -
70	0170-3543	STPA-BRX	OTH	2020	Various	STATEWIDE	CE Bridge Insp - Uwater - Non-NHS Roads (9/1/19 - 8/31/23)	\$ 1,200,000	\$ 960,000	\$ 240,000	\$ -
70	0170-3543	STPA-BRX	OTH	2021	Various	STATEWIDE	CE Bridge Insp - Uwater - Non-NHS Roads (9/1/19 - 8/31/23)	\$ 1,200,000	\$ 960,000	\$ 240,000	\$ -
70	0170-3543	STPA-BRX	OTH	2022	Various	STATEWIDE	CE Bridge Insp - Uwater - Non-NHS Roads (9/1/19 - 8/31/23)	\$ 1,200,000	\$ 960,000	\$ 240,000	\$ -
70	0170-3551	NHPP-BRX	PE	2020	Various	STATEWIDE	NHS NBI Bridge Pin & Hanger Assemblies (PD)	\$ 200,000	\$ 160,000	\$ 40,000	\$ -
70	0170-3551	NHPP-BRX	RW	2021	Various	STATEWIDE	NHS NBI Bridge Pin & Hanger Assemblies	\$ 50,000	\$ 40,000	\$ 10,000	\$ -
70	0170-3551	NHPP-BRX	PE	2021	Various	STATEWIDE	NHS NBI Bridge Pin & Hanger Assemblies (FD)	\$ 100,000	\$ 80,000	\$ 20,000	\$ -
70	0170-3557	STPA-BRX	PE	2020	Various	STATEWIDE	Non-NHS NBI Bridge Pin & Hanger Assemblies (PD)	\$ 200,000	\$ 160,000	\$ 40,000	\$ -
70	0170-3557	STPA-BRX	PE	2021	Various	STATEWIDE	Non-NHS NBI Bridge Pin & Hanger Assemblies (FD)	\$ 100,000	\$ 80,000	\$ 20,000	\$ -
70	0170-3557	STPA-BRX	RW	2021	Various	STATEWIDE	Non-NHS NBI Bridge Pin & Hanger Assemblies	\$ 50,000	\$ 40,000	\$ 10,000	\$ -
70	0170-3560	STPA-BRX	PL	2020		STATEWIDE	Bridge Management Group (7/1/20 - 6/30/22)	\$ 2,518,550	\$ 2,014,840	\$ 503,710	\$ -
70	170C-Enhs	NHPP-BRX	OTH	2021	Various	STATEWIDE	CE Bridge Insp - NHS Roads, NBI Bridges Only (Annual Requirement)	\$ 15,000,000	\$ 12,000,000	\$ 3,000,000	\$ -
70	170C-Enhs	NHPP-BRX	OTH	2022	Various	STATEWIDE	CE Bridge Insp - NHS Roads, NBI Bridges Only (Annual Requirement)	\$ 15,000,000	\$ 12,000,000	\$ 3,000,000	\$ -
70	170C-Enhs	NHPP-BRX	OTH	2023	Various	STATEWIDE	CE Bridge Insp - NHS Roads, NBI Bridges Only (Annual Requirement)	\$ 15,000,000	\$ 12,000,000	\$ 3,000,000	\$ -
70	170C-Enhs	NHPP-BRX	OTH	2024	Various	STATEWIDE	CE Bridge Insp - NHS Roads, NBI Bridges Only (Annual Requirement)	\$ 15,000,000	\$ 12,000,000	\$ 3,000,000	\$ -
70	170C-Enhs	NHPP-BRX	OTH	2025	Various	STATEWIDE	CE Bridge Insp - NHS Roads, NBI Bridges Only (Annual Requirement)	\$ 15,000,000	\$ 12,000,000	\$ 3,000,000	\$ -
70	170C-Enon	STPA-BRX	OTH	2021	Various	STATEWIDE	CE Bridge Insp - Non-NHS Roads (Annual Requirement)	\$ 8,000,000	\$ 6,400,000	\$ 1,600,000	\$ -
70	170C-Enon	STPA-BRX	OTH	2022	Various	STATEWIDE	CE Bridge Insp - Non-NHS Roads (Annual Requirement)	\$ 8,000,000	\$ 6,400,000	\$ 1,600,000	\$ -



Capitol Region Transportation Improvement Program  
FFY2021-2024 **DRAFT**

REGION	PROJECT #	STIP CODE	PHASE	YEAR	ROUTE	TOWN	DESCRIPTION	TOTAL COST	FEDERAL SHARE	STATE SHARE	LOCAL SHARE
70	170C-Enon	STPA-BRX	OTH	2023	Various	STATEWIDE	CE Bridge Insp - Non-NHS Roads (Annual Requirement)	\$ 8,000,000	\$ 6,400,000	\$ 1,600,000	\$ -
70	170C-Enon	STPA-BRX	OTH	2025	Various	STATEWIDE	CE Bridge Insp - Non-NHS Roads (Annual Requirement)	\$ 8,000,000	\$ 6,400,000	\$ 1,600,000	\$ -
70	170S-COUR	STPA-BRX	OTH	2024	Various	STATEWIDE	NBI Bridge Scour Monitoring (PH - effective 1/1/24)	\$ 100,000	\$ 80,000	\$ 20,000	\$ -
70	170S-COUR	STPA-BRX	OTH	2025	Various	STATEWIDE	NBI Bridge Scour Monitoring (PH - effective 1/1/25)	\$ 100,000	\$ 80,000	\$ 20,000	\$ -
70	170S-Fnhs	NHPP-BRX	OTH	2021	Various	STATEWIDE	SF Bridge Insp - NHS Roads (Annual Requirement)	\$ 2,000,000	\$ 1,600,000	\$ 400,000	\$ -
70	170S-Fnhs	NHPP-BRX	OTH	2022	Various	STATEWIDE	SF Bridge Insp - NHS Roads (Annual Requirement)	\$ 2,000,000	\$ 1,600,000	\$ 400,000	\$ -
70	170S-Fnhs	NHPP-BRX	OTH	2023	Various	STATEWIDE	SF Bridge Insp - NHS Roads (Annual Requirement)	\$ 2,000,000	\$ 1,600,000	\$ 400,000	\$ -
70	170S-Fnhs	NHPP-BRX	OTH	2024	Various	STATEWIDE	SF Bridge Insp - NHS Roads (Annual Requirement)	\$ 2,000,000	\$ 1,600,000	\$ 400,000	\$ -
70	170S-Fnhs	NHPP-BRX	OTH	2025	Various	STATEWIDE	SF Bridge Insp - NHS Roads (Annual Requirement)	\$ 2,000,000	\$ 1,600,000	\$ 400,000	\$ -
70	170S-Fnon	STPA-BRX	OTH	2021	Various	STATEWIDE	SF Bridge Insp - Non-NHS Roads (Annual Requirement)	\$ 2,500,000	\$ 2,000,000	\$ 500,000	\$ -
70	170S-Fnon	STPA-BRX	OTH	2022	Various	STATEWIDE	SF Bridge Insp - Non-NHS Roads (Annual Requirement)	\$ 2,500,000	\$ 2,000,000	\$ 500,000	\$ -
70	170S-Fnon	STPA-BRX	OTH	2023	Various	STATEWIDE	SF Bridge Insp - Non-NHS Roads (Annual Requirement)	\$ 2,500,000	\$ 2,000,000	\$ 500,000	\$ -
70	170S-Fnon	STPA-BRX	OTH	2024	Various	STATEWIDE	SF Bridge Insp - Non-NHS Roads (Annual Requirement)	\$ 2,500,000	\$ 2,000,000	\$ 500,000	\$ -
70	170S-Fnon	STPA-BRX	OTH	2025	Various	STATEWIDE	SF Bridge Insp - Non-NHS Roads (Annual Requirement)	\$ 2,500,000	\$ 2,000,000	\$ 500,000	\$ -
70	170U-Wnhs	NHPP-BRX	OTH	2023	Various	STATEWIDE	CE Bridge Insp - Uwater - NHS Roads (Placeholder; Effective 9/1/23, Yr 1)	\$ 750,000	\$ 600,000	\$ 150,000	\$ -
70	170U-Wnhs	NHPP-BRX	OTH	2024	Various	STATEWIDE	CE Bridge Insp - Uwater - NHS Roads (Placeholder; Effective 9/1/23, Yr 2)	\$ 750,000	\$ 600,000	\$ 150,000	\$ -
70	170U-Wnhs	NHPP-BRX	OTH	2025	Various	STATEWIDE	CE Bridge Insp - Uwater - NHS Roads (Placeholder; Effective 9/1/23, Yr 3)	\$ 750,000	\$ 600,000	\$ 150,000	\$ -
70	170U-Wnhs	NHPP-BRX	OTH	2026	Various	STATEWIDE	CE Bridge Insp - Uwater - NHS Roads (Placeholder; Effective 9/1/23, Yr 4)	\$ 750,000	\$ 600,000	\$ 150,000	\$ -
70	170U-Wnon	STPA-BRX	OTH	2023	Various	STATEWIDE	CE Bridge Insp - Uwater - Non-NHS Roads (Placeholder; Effective 9/1/23, Yr 1)	\$ 1,200,000	\$ 960,000	\$ 240,000	\$ -
70	170U-Wnon	STPA-BRX	OTH	2024	Various	STATEWIDE	CE Bridge Insp - Uwater - Non-NHS Roads (Placeholder; Effective 9/1/23, Yr 2)	\$ 1,200,000	\$ 960,000	\$ 240,000	\$ -
70	170U-Wnon	STPA-BRX	OTH	2025	Various	STATEWIDE	CE Bridge Insp - Uwater - Non-NHS Roads (Placeholder; Effective 9/1/23, Yr 3)	\$ 1,200,000	\$ 960,000	\$ 240,000	\$ -
70	170U-Wnon	STPA-BRX	OTH	2026	Various	STATEWIDE	CE Bridge Insp - Uwater - Non-NHS Roads (Placeholder; Effective 9/1/23, Yr 4)	\$ 1,200,000	\$ 960,000	\$ 240,000	\$ -
70	Brdg-LRNH	NHPP-BRX	OTH	2021	Various	STATEWIDE	Load Ratings for Bridges - NHS Roads (7/1/21-6/30/26)	\$ 1,050,000	\$ 840,000	\$ 210,000	\$ -
70	Brdg-LRNH	NHPP-BRX	OTH	2022	Various	STATEWIDE	Load Ratings for Bridges - NHS Roads (7/1/21-6/30/26)	\$ 1,050,000	\$ 840,000	\$ 210,000	\$ -
70	Brdg-LRNH	NHPP-BRX	OTH	2023	Various	STATEWIDE	Load Ratings for Bridges - NHS Roads (7/1/21-6/30/26)	\$ 1,050,000	\$ 840,000	\$ 210,000	\$ -

Capitol Region Transportation Improvement Program  
FFY2021-2024 **DRAFT**

REGION	PROJECT #	STIP CODE	PHASE	YEAR	ROUTE	TOWN	DESCRIPTION	TOTAL COST	FEDERAL SHARE	STATE SHARE	LOCAL SHARE
70	Brdg-LRNH	NHPP-BRX	OTH	2024	Various	STATEWIDE	Load Ratings for Bridges - NHS Roads (7/1/21-6/30/26)	\$ 1,050,000	\$ 840,000	\$ 210,000	\$ -
70	Brdg-LRNH	NHPP-BRX	OTH	2025	Various	STATEWIDE	Load Ratings for Bridges - NHS Roads (7/1/21-6/30/26)	\$ 1,050,000	\$ 840,000	\$ 210,000	\$ -
70	Brdg-LRNO	STPA-BRX	OTH	2021	Various	STATEWIDE	Load Ratings for Bridges - Non-NHS Roads (7/1/21-6/30/26)	\$ 850,000	\$ 680,000	\$ 170,000	\$ -
70	Brdg-LRNO	STPA-BRX	OTH	2022	Various	STATEWIDE	Load Ratings for Bridges - Non-NHS Roads (7/1/21-6/30/26)	\$ 850,000	\$ 680,000	\$ 170,000	\$ -
70	Brdg-LRNO	STPA-BRX	OTH	2023	Various	STATEWIDE	Load Ratings for Bridges - Non-NHS Roads (7/1/21-6/30/26)	\$ 850,000	\$ 680,000	\$ 170,000	\$ -
70	Brdg-LRNO	STPA-BRX	OTH	2024	Various	STATEWIDE	Load Ratings for Bridges - Non-NHS Roads (7/1/21-6/30/26)	\$ 850,000	\$ 680,000	\$ 170,000	\$ -
70	Brdg-LRNO	STPA-BRX	OTH	2025	Various	STATEWIDE	Load Ratings for Bridges - Non-NHS Roads (7/1/21-6/30/26)	\$ 850,000	\$ 680,000	\$ 170,000	\$ -
70	Brdg-Mgmt	STPA-BRX	PL	2022		STATEWIDE	Bridge Management Group	\$ 1,250,000	\$ 1,000,000	\$ 250,000	\$ -
70	Brdg-Mgmt	STPA-BRX	PL	2023		STATEWIDE	Bridge Management Group	\$ 1,250,000	\$ 1,000,000	\$ 250,000	\$ -
70	Brdg-Mgmt	STPA-BRX	PL	2024		STATEWIDE	Bridge Management Group	\$ 1,250,000	\$ 1,000,000	\$ 250,000	\$ -
70	Brdg-Mgmt	STPA-BRX	PL	2025		STATEWIDE	Bridge Management Group	\$ 1,250,000	\$ 1,000,000	\$ 250,000	\$ -
70	Brdg-OFFx	BRZ	CN	2024		STATEWIDE	TBD Local Bridge Preservation Projects	\$ 30,000,000	\$ 24,000,000	\$ 6,000,000	\$ -
70	Brdg-OFFx	BRZ	CN	2025		STATEWIDE	TBD Local Bridge Preservation Projects	\$ 30,000,000	\$ 24,000,000	\$ 6,000,000	\$ -
70	Brdg-Pnlt	NHPP-BRX	CN	2022		STATEWIDE	TBD NHS Bridge Preservation Projects	\$ -	\$ -	\$ -	\$ -
05, 08, 10	0170-3548	NHPP-BRX	PE	2020	Various	STATEWIDE	Pin & Hanger Assemblies for Fracture Critical Interstate Bridges (PD)	\$ 250,000	\$ 225,000	\$ 25,000	\$ -
05, 08, 10	0170-3548	NHPP-BRX	RW	2021	Various	STATEWIDE	Pin & Hanger Assemblies for Fracture Critical Interstate Bridges	\$ 50,000	\$ 45,000	\$ 5,000	\$ -
05, 08, 10	0170-3548	NHPP-BRX	PE	2021	Various	STATEWIDE	Pin & Hanger Assemblies for Fracture Critical Interstate Bridges (FD)	\$ 150,000	\$ 135,000	\$ 15,000	\$ -
05, 08, 10	0170-3548	NHPP-BRX	CN	2023	Various Interstate	STATEWIDE	Pin & Hanger Assemblies for Fracture Critical Interstate NBI Bridges	\$ 13,100,000	\$ 11,790,000	\$ 1,310,000	\$ -

## ***Section D: Capitol Region Safety Projects***

The following list of safety projects in the Capitol Region is for information purposes only. The TIP gives approval to the entire Statewide Safety Program, and not for individual projects. Individual projects are moved forward at CTDOT's discretion. The list below is updated through August 19, 2020. The project list is updated regularly and included on CRCOG's TIP website and CTDOT's STIP website.

Capitol Region Transportation Improvement Program  
FFY2021-2024 **DRAFT**

REGION	PROJECT #	PHASE	CODE	ROUTE	TOWN	DESCRIPTION	TOTAL COST	FEDERAL SHARE	STATE SHARE	LOCAL SHARE
10	0011-0155	CN	STPX	CT 178/Crestview Drive	BLOOMFIELD	Extension of RR Track Circuit at Int. #11-252	\$ 710,000	\$ 639,000	\$ 71,000	\$ -
10	0063-0720	CN	SIPH	Asylum Avenue	HARTFORD	Intersection Improvements at Sigourney Street	\$ 922,220	\$ 829,998	\$ -	\$ 92,222
10	0063-0727	CN	SIPH	Various	HARTFORD	Intersection & Signal Improvements	\$ 1,267,650	\$ 1,140,885	\$ -	\$ 126,765
10	0076-0224	CN	SIPH	Various	MANCHESTER	Intersection Improvements at Various Streets	\$ 986,900	\$ 888,210	\$ -	\$ 98,690
10	0093-0214	PL	Sect 154		NEWINGTON	Highway Safety Office Tasks Consistent with SHSP (7/1/16-6/30/21)	\$ 860,000	\$ 860,000	\$ -	\$ -
10	0093-0213	PL	Sect 154		NEWINGTON	CT Safety Research Center (7/1/16-6/30/21)	\$ 1,540,000	\$ 1,540,000	\$ -	\$ -
10	0139-0103	CN	STPX	Harvey Lane	SUFFIELD	Modernize Railroad Crossing	\$ 1,628,880	\$ 1,465,992	\$ 162,888	\$ -
71	0171-0454	PE	SIPH	Various	DISTRICT 1	Midblock Crosswalk Upgrades (PD)	\$ 139,500	\$ 125,550	\$ 13,950	\$ -
71	0171-0434	CN	SIPH	Various	DISTRICT 1	Replace Traffic Signals @ 5 SLOSS Locations	\$ 1,650,400	\$ 1,650,400	\$ -	\$ -
71	0171-0450	PE	SIPH	Various	DISTRICT 1	Replace/Install One-Way Signs (FD)	\$ 85,000	\$ 85,000	\$ -	\$ -
71	0171-0454	PE	SIPH	Various	DISTRICT 1	Midblock Crosswalk Upgrades (FD)	\$ 55,000	\$ 49,500	\$ 5,500	\$ -
71	0171-0454	RW	SIPH	Various	DISTRICT 1	Midblock Crosswalk Upgrades	\$ 8,000	\$ 7,200	\$ 800	\$ -
71	0171-0450	CN	SIPH	Various	DISTRICT 1	Replace/Install One-Way Signs	\$ 900,000	\$ 900,000	\$ -	\$ -
71	0171-0440	PE	SIPH	Various	DISTRICT 1	Horizontal Curve Signs & Pavement Markings (FD)	\$ 281,000	\$ 281,000	\$ -	\$ -
71	0171-0440	CN	SIPH	Various	DISTRICT 1	Horizontal Curve Signs & Pavement Markings	\$ 3,477,000	\$ 3,477,000	\$ -	\$ -
71	0171-0454	CN	SIPH	Various	DISTRICT 1	Midblock Crosswalk Upgrades	\$ 278,000	\$ 250,200	\$ 27,800	\$ -
71	0171-0462	PE	SIPH	Various	DISTRICT 1	Traffic Signal Safety Improvements (Project #1) (PD)	\$ 682,500	\$ 682,500	\$ -	\$ -
71	0171-0463	PE	SIPH	Various	DISTRICT 1	Traffic Signal Safety Improvements (Project #2) (PD)	\$ 699,000	\$ 699,000	\$ -	\$ -
71	0171-0462	RW	SIPH	Various	DISTRICT 1	Traffic Signal Safety Improvements (Project #1)	\$ 10,000	\$ 10,000	\$ -	\$ -
71	0171-0462	PE	SIPH	Various	DISTRICT 1	Traffic Signal Safety Improvements (Project #1) (FD)	\$ 790,500	\$ 790,500	\$ -	\$ -
71	0171-0463	RW	SIPH	Various	DISTRICT 1	Traffic Signal Safety Improvements (Project #2)	\$ 10,000	\$ 10,000	\$ -	\$ -
71	0171-0463	PE	SIPH	Various	DISTRICT 1	Traffic Signal Safety Improvements (Project #2) (FD)	\$ 831,000	\$ 831,000	\$ -	\$ -
71	0171-0462	CN	SIPH	Various	DISTRICT 1	Traffic Signal Safety Improvements (Project #1)	\$ 5,300,000	\$ 4,770,000	\$ 530,000	\$ -
71	0171-0463	CN	SIPH	Various	DISTRICT 1	Traffic Signal Safety Improvements (Project #2)	\$ 5,286,000	\$ 4,757,400	\$ 528,600	\$ -
72	0172-0450	CN	SIPH	Various	DISTRICT 2	Signal Replacements for APS Upgrade	\$ 922,406	\$ 922,406	\$ -	\$ -
72	0172-0495	PE	SIPH	Various	DISTRICT 2	Midblock Crosswalk Upgrades (PD)	\$ 506,000	\$ 455,400	\$ 50,600	\$ -
72	0172-0488	PE	SIPH	Various	DISTRICT 2	Replace/Install One-Way Signs (FD)	\$ 50,000	\$ 50,000	\$ -	\$ -
72	0172-0495	PE	SIPH	Various	DISTRICT 2	Midblock Crosswalk Upgrades (FD)	\$ 184,500	\$ 166,050	\$ 18,450	\$ -
72	0172-0495	RW	SIPH	Various	DISTRICT 2	Midblock Crosswalk Upgrades	\$ 62,000	\$ 55,800	\$ 6,200	\$ -
72	0172-0484	RW	SIPH	Various	DISTRICT 2	Traffic Signal Safety Improvements (Proj. #1)	\$ 50,000	\$ 50,000	\$ -	\$ -
72	0172-0484	PE	SIPH	Various	DISTRICT 2	Traffic Signal Safety Improvements (Proj. #1) (FD)	\$ 450,000	\$ 450,000	\$ -	\$ -
72	0172-0488	CN	SIPH	Various	DISTRICT 2	Replace/Install One-Way Signs	\$ 525,000	\$ 525,000	\$ -	\$ -



Capitol Region Transportation Improvement Program  
FFY2021-2024 **DRAFT**

REGION	PROJECT #	PHASE	CODE	ROUTE	TOWN	DESCRIPTION	TOTAL COST	FEDERAL SHARE	STATE SHARE	LOCAL SHARE
72	0172-0485	PE	SIPH	Various	DISTRICT 2	Traffic Signal Safety Improvements (Proj. #2) (FD)	\$ 475,000	\$ 475,000	\$ -	\$ -
72	0172-0485	RW	SIPH	Various	DISTRICT 2	Traffic Signal Safety Improvements (Proj. #2)	\$ 30,000	\$ 30,000	\$ -	\$ -
72	0172-0477	PE	SIPH	Various	DISTRICT 2	Horizontal Curve Signs & Pvm. Markings (FD)	\$ 641,000	\$ 641,000	\$ -	\$ -
72	0172-0484	CN	SIPH	Various	DISTRICT 2	Traffic Signal Safety Improvements (Proj. #1)	\$ 4,400,000	\$ 3,960,000	\$ 440,000	\$ -
72	0172-0485	CN	SIPH	Various	DISTRICT 2	Traffic Signal Safety Improvements (Proj. #2)	\$ 4,400,000	\$ 3,960,000	\$ 440,000	\$ -
72	0172-0495	CN	SIPH	Various	DISTRICT 2	Midblock Crosswalk Upgrades	\$ 1,410,000	\$ 1,269,000	\$ 141,000	\$ -
72	0172-0477	CN	SIPH	Various	DISTRICT 2	Horizontal Curve Signs & Pvm. Markings	\$ 4,794,000	\$ 4,794,000	\$ -	\$ -
74	0174-0405	CN	SIPH	Various	DISTRICT 4	Traffic Signal Replacements for APS Upgrades	\$ 4,489,867	\$ 4,489,867	\$ -	\$ -
74	0174-0417	CN	SIPH	Various	DISTRICT 4	Horizontal Curve Signs & Pavement Markings	\$ 2,427,340	\$ 2,427,340	\$ -	\$ -
74	0174-0438	PE	SIPH	Various	DISTRICT 4	Midblock Crosswalk Upgrades (PD)	\$ 354,500	\$ 319,050	\$ 35,450	\$ -
74	0174-0435	PE	SIPH	Various	DISTRICT 4	Traffic Signal Safety Improvements (Proj #1) (PD)	\$ 825,000	\$ 825,000	\$ -	\$ -
74	0174-0436	PE	SIPH	Various	DISTRICT 4	Traffic Signal Safety Improvements (Proj #2) (PD)	\$ 925,000	\$ 925,000	\$ -	\$ -
74	0174-0438	PE	SIPH	Various	DISTRICT 4	Midblock Crosswalk Upgrades (FD)	\$ 130,000	\$ 117,000	\$ 13,000	\$ -
74	0174-0438	RW	SIPH	Various	DISTRICT 4	Midblock Crosswalk Upgrades	\$ 8,000	\$ 7,200	\$ 800	\$ -
74	0174-0432	PE	SIPH	Various	DISTRICT 4	Replace/Install One-Way Signs (FD)	\$ 60,000	\$ 60,000	\$ -	\$ -
74	0174-0432	CN	SIPH	Various	DISTRICT 4	Replace/Install One-Way Signs	\$ 600,000	\$ 600,000	\$ -	\$ -
74	0174-0438	CN	SIPH	Various	DISTRICT 4	Midblock Crosswalk Upgrades	\$ 717,000	\$ 645,300	\$ 71,700	\$ -
74	0174-0435	PE	SIPH	Various	DISTRICT 4	Traffic Signal Safety Improvements (Proj #1) (FD)	\$ 425,000	\$ 425,000	\$ -	\$ -
74	0174-0435	RW	SIPH	Various	DISTRICT 4	Traffic Signal Safety Improvements (Proj #1)	\$ 50,000	\$ 50,000	\$ -	\$ -
74	0174-0436	PE	SIPH	Various	DISTRICT 4	Traffic Signal Safety Improvements (Proj #2) (FD)	\$ 435,000	\$ 435,000	\$ -	\$ -
74	0174-0436	RW	SIPH	Various	DISTRICT 4	Traffic Signal Safety Improvements (Proj #2)	\$ 50,000	\$ 50,000	\$ -	\$ -
70	0170-3566	PL	SIPH		Rural Towns	HRRR Speed Management Program (thru 6/30/22)	\$ 136,956	\$ 136,956	\$ -	\$ -
70	0170-5002	PL	SIPR		Rural Towns	HRRR Work Zone Safety Program	\$ -	\$ -	\$ -	\$ -
70	0170-3566	PL	SIPR		Rural Towns	HRRR Speed Management Program (thru 6/30/22)	\$ 466,044	\$ 466,044	\$ -	\$ -
70	0170-3566	PL	SIPR		Rural Towns	HRRR Speed Management Program	\$ 628,200	\$ 628,200	\$ -	\$ -
70	SIPH-xxxx	CN	SIPH		STATEWIDE	TBD Safety Projects	\$ 16,138,889	\$ 14,525,000	\$ 1,613,889	\$ -
70	CHMP-xxxx	OTH	SIPH	Various	STATEWIDE	CHAMP Safety Service Patrol (effective 5/23/21)	\$ 4,537,000	\$ 4,083,300	\$ -	\$ 453,700
70	SIPH-xxxx	CN	SIPH		STATEWIDE	TBD Safety Projects	\$ 17,777,778	\$ 16,000,000	\$ 1,777,778	\$ -
70	CHMP-xxxx	OTH	SIPH	Various	STATEWIDE	CHAMP Safety Service Patrol	\$ 4,537,000	\$ 4,083,300	\$ -	\$ 453,700
70	SIPH-xxxx	CN	SIPH		STATEWIDE	TBD Safety Projects	\$ 22,222,222	\$ 20,000,000	\$ 2,222,222	\$ -
70	CHMP-xxxx	OTH	SIPH	Various	STATEWIDE	CHAMP Safety Service Patrol	\$ 4,537,000	\$ 4,083,300	\$ -	\$ 453,700
70	CHMP-xxxx	OTH	SIPH	Various	STATEWIDE	CHAMP Safety Service Patrol	\$ 4,537,000	\$ 4,083,300	\$ -	\$ 453,700

Capitol Region Transportation Improvement Program  
FFY2021-2024 **DRAFT**

REGION	PROJECT #	PHASE	CODE	ROUTE	TOWN	DESCRIPTION	TOTAL COST	FEDERAL SHARE	STATE SHARE	LOCAL SHARE
70	SIPH-xxxx	CN	SIPH		STATEWIDE	TBD Safety Projects	\$ 38,888,889	\$ 35,000,000	\$ 3,888,889	\$ -
70	SIPH-xxxx	CN	SIPH		STATEWIDE	TBD Safety Projects	\$ 38,888,889	\$ 35,000,000	\$ 3,888,889	\$ -
70	CHMP-xxxx	OTH	SIPH	Various	STATEWIDE	CHAMP Safety Service Patrol	\$ 4,537,000	\$ 4,083,300	\$ -	\$ 453,700
70	0170-3565	PL	Sect 154		STATEWIDE	CT Safety Analysis Methods (thru 9/30/25)	\$ 1,500,000	\$ 1,500,000	\$ -	\$ -
70	0170-3569	PL	Sect 154		STATEWIDE	Continued Development of GIS Safety Planning & Analysis Capabilities	\$ 1,902,430	\$ 1,902,430	\$ -	\$ -
70	0170-3565	PL	Sect 154		STATEWIDE	CT Safety Analysis Methods (thru 9/30/25)	\$ 1,500,000	\$ 1,500,000	\$ -	\$ -
70	0170-3565	PL	Sect 154		STATEWIDE	CT Safety Analysis Methods (thru 9/30/25)	\$ 1,500,000	\$ 1,500,000	\$ -	\$ -
70	0170-3565	PL	Sect 154		STATEWIDE	CT Safety Analysis Methods (thru 9/30/25)	\$ 1,500,000	\$ 1,500,000	\$ -	\$ -
70	0170-3565	PL	Sect 154		STATEWIDE	CT Safety Analysis Methods (thru 9/30/25)	\$ 1,500,000	\$ 1,500,000	\$ -	\$ -
70	PEPD-Auth	PE	SIPH		VARIOUS	PE(PD) for High Freq Crash Locations from Active Trans Plan	\$ 1,000,000	\$ 900,000	\$ 100,000	\$ -

## Section E: List of Projects to Be Funded (by Town, District, or Statewide)

Town	Region	Program	Proj	RouteSystem	Description	Phase	Year	TOT \$000s	Fed \$000s	State \$000s	Local \$000s	Comment
BERLIN	CAPITOL	NATIONAL HIGHWAY PERFORMANCE PROGRAM	0007-0262	US 5/CT 15	INSTALLATION OF CTSS WITH CV TECH (PHASE 2)	ROW	2021	120	96	24	0	
BERLIN	CAPITOL	NATIONAL HIGHWAY PERFORMANCE PROGRAM	0007-0262	US 5/CT 15	INSTALLATION OF CTSS WITH CV TECH (PHASE 2)	FD	2021	300	240	60	0	
BERLIN	CAPITOL	NATIONAL HIGHWAY PERFORMANCE PROGRAM	0007-0262	US 5/CT 15	INSTALLATION OF CTSS WITH CV TECH (PHASE 2)	CON	2022	8000	6400	1600	0	
BERLIN/WETHE RSFIELD	CAPITOL	NATIONAL HIGHWAY PERFORMANCE PROGRAM	0007-0250	US 5/CT 15	INSTALLATION OF CTSS WITH CV TECH (PHASE 1)	CON	2021	10000	8000	2000	0	
BLOOMFIELD	CAPITOL	STP-URBAN	0011-0157	CT 189	CONSTRUCT ROUNDABOUTS AT CT 178 & WINTONBURY AVE	FD	2021	500	400	100	0	
BLOOMFIELD	CAPITOL	STP-URBAN	0011-0157	CT 189	CONSTRUCT ROUNDABOUTS AT CT 178 & WINTONBURY AVE	ROW	2021	90	72	18	0	
BLOOMFIELD	CAPITOL	STP-URBAN	0011-0157	CT 189	CONSTRUCT ROUNDABOUTS AT CT 178 & WINTONBURY AVE	CON	2022	6290	5032	1258	0	
DISTRICT 1	DISTRICT 1	HIGHWAY SAFETY IMPROVEMENT PROGRAM	0171-0440	VARIOUS	HORIZONTAL CURVE SIGNS & PAVEMENT MARKINGS	CON	2021	4975	4975	0	0	
DISTRICT 1	DISTRICT 1	STP-ANYWHERE	0171-0441	VARIOUS	REPLACE TRAFFIC SIGNALS AT VARIOUS LOCATIONS	CON	2021	3657	3657	0	0	
DISTRICT 2	DISTRICT 2	HIGHWAY SAFETY IMPROVEMENT PROGRAM	0172-0477	VARIOUS	HORIZONTAL CURVE SIGNS & PVMT. MARKINGS	CON	2022	6225	6225	0	0	
DISTRICT 2	DISTRICT 2	STP-ANYWHERE	0172-0476	VARIOUS	REPLACE TRAFFIC CONTROL SIGNALS AT VARIOUS LOCATIONS	CON	2021	3500	3500	0	0	
DISTRICT 4	DISTRICT 4	STP-ANYWHERE	0174-0424	VARIOUS	REPLACE TRAFFIC SIGNALS AT VARIOUS LOCATIONS	CON	2021	4949	4949	0	0	

Capitol Region Transportation Improvement Program  
FFY2021-2024 **DRAFT**

Town	Region	Program	Proj	RouteSystem	Description	Phase	Year	TOT \$000s	Fed \$000s	State \$000s	Local \$000s	Comment
EAST HARTFORD	CAPITOL	STP-URBAN	0042-0318	BREWER STREET	RECONSTRUCTION OF BREWER ST	CON	2021	6100	4880	610	610	
EAST WINDSOR	CAPITOL	STP-SPRINGFIELD	0046-0127	CT 191	REPLACE BR 01524 OVER SCANTIC RIVER	FD	2021	300	240	60	0	
EAST WINDSOR	CAPITOL	STP-SPRINGFIELD	0046-0127	CT 191	REPLACE BR 01524 OVER SCANTIC RIVER	ROW	2021	50	40	10	0	
EAST WINDSOR	CAPITOL	STP-SPRINGFIELD	0046-0127	CT 191	REPLACE BR 01524 OVER SCANTIC RIVER	CON	2022	2135	1708	427	0	
ENFIELD	CAPITOL	HIGH PRIORITY PROJECTS	0048-0190		CONSTRUCT HIGH-SPEED RAIL CROSSING TO BIKE & PED TRAILS ALONG THE CT RIVER	CON	2021	3251	2600	0	650	
FARMINGTON	CAPITOL	STP-ANYWHERE	0051-0275	CT 167	CULVERT REPLACEMENT & DRAINAGE IMPROVEMENTS	CON	2022	1944	1555	389	0	
FARMINGTON	CAPITOL	STP-URBAN	0051-0274	I-84/US 6/SR 531	REALIGN I-84 EB ON-RAMP AND US 6	CON	2021	3267	2614	653	0	
FARMINGTON/C ROMWELL	DISTRICT 1	CONGESTION MITIGATION & AIR QUALITY	0171-0415	RT 9/72	RT 9/72 CCTV INSTALLATION - AC ENTRY	CON	2021	0	0	0	0	
FARMINGTON/C ROMWELL	DISTRICT 1	CONGESTION MITIGATION & AIR QUALITY	0171-0415	RT 9/72	RT 9/72 CCTV INSTALLATION - AC CONVERSION	CON	2021	8750	7000	1750	0	
FARMINGTON/C ROMWELL	DISTRICT 1	CONGESTION MITIGATION & AIR QUALITY	0171-0415	RT 9/72	RT 9/72 CCTV INSTALLATION - AC CONVERSION	CON	2022	8750	7000	1750	0	
FARMINGTON/C ROMWELL	DISTRICT 1	CONGESTION MITIGATION & AIR QUALITY	0171-0415	RT 9/72	RT 9/72 CCTV INSTALLATION - AC CONVERSION	CON	2023	8312	6650	1662	0	
HARTFORD	CAPITOL	FTA SECTION 5307 CAPITAL	0426-XXXX	GHTD	GHTD - REPLACE PARATRANSIT VEHICLES FY 21	ACQ	2021	2500	2000	500	0	
HARTFORD	CAPITOL	FTA SECTION 5307 CAPITAL	0426-XXXX	GHTD	GHTD - UNION STATION REHAB/IMPROVEMENTS FY 21(ROOF)	CON	2021	3125	2500	625	0	
HARTFORD	CAPITOL	FTA SECTION 5307 CAPITAL	0426-XXXX	GHTD	GHTD - ADMIN CAPITAL/MISC SUPPORT FY 2021	OTH	2021	750	600	150	0	

Capitol Region Transportation Improvement Program  
FFY2021-2024 **DRAFT**

Town	Region	Program	Proj	RouteSystem	Description	Phase	Year	TOT \$000s	Fed \$000s	State \$000s	Local \$000s	Comment
HARTFORD	CAPITOL	FTA SECTION 5307 CAPITAL	0426-XXXX	GHTD	GHTD - ADMIN CAPITAL/MISC SUPPORT FY 22	OTH	2022	1500	1200	300	0	
HARTFORD	CAPITOL	FTA SECTION 5307 CAPITAL	0426-XXXX	GHTD	GHTD - UNION STATION REHAB/IMPROVEMENTS FY 22	ALL	2022	2000	1600	400	0	
HARTFORD	CAPITOL	FTA SECTION 5307 CAPITAL	0426-XXXX	GHTD	GHTD - REPLACE PARATRANSIT VEHICLES FY 22	ACQ	2022	2300	1840	460	0	
HARTFORD	CAPITOL	FTA SECTION 5307 CAPITAL	0426-XXXX	GHTD	GHTD - ADMIN CAPITAL/MISC SUPPORT FY 23	OTH	2023	1500	1200	300	0	
HARTFORD	CAPITOL	FTA SECTION 5307 CAPITAL	0426-XXXX	GHTD	GHTD - UNION STATION REHAB/IMPROVEMENTS FY 23	ALL	2023	2000	1600	400	0	
HARTFORD	CAPITOL	FTA SECTION 5307 CAPITAL	0426-XXXX	GHTD	GHTD - REPLACE PARATRANSIT VEHICLES FY 23	ACQ	2023	3000	2400	600	0	
HARTFORD	CAPITOL	FTA SECTION 5307 CAPITAL	0426-XXXX	GHTD	GHTD - ADMIN CAPITAL/MISC SUPPORT FY 24	OTH	2024	750	600	150	0	
HARTFORD	CAPITOL	FTA SECTION 5307 CAPITAL	0426-XXXX	GHTD	GHTD - UNION STATION REHAB/IMPROVEMENTS FY 24	ALL	2024	1000	800	200	0	
HARTFORD	CAPITOL	FTA SECTION 5307 CAPITAL	0426-XXXX	GHTD	GHTD - REPLACE PARATRANSIT VEHICLES FY 24	ACQ	2024	3000	2400	600	0	
HARTFORD	CAPITOL	FTA SECTION 5307 CARRYOVER	0401-0012	CTTRANSIT	CTTRANSIT HARTFORD FACILITY IMPROVEMENTS.	CON	2021	25000	20000	5000	0	
HARTFORD	CAPITOL	NATIONAL HIGHWAY PERFORMANCE PROGRAM	0063-0703	I-91/RT 15	RELOCATION & RECONFIGURE INTERCHANGE 29 - AC ENTRY	CON	2022	0	0	0	0	
HARTFORD	CAPITOL	NATIONAL HIGHWAY PERFORMANCE PROGRAM	0063-0703	I-91/RT 15	RELOCATION & RECONFIGURE INTERCHANGE 29 - AC CONVERSION	CON	2022	6250	5000	1250	0	
HARTFORD	CAPITOL	NATIONAL HIGHWAY PERFORMANCE PROGRAM	0063-0723	I-84	REPLACE RETAINING WALL AT SOUTH END OF BR 01765	CON	2022	1000	900	100	0	
HARTFORD	CAPITOL	NATIONAL HIGHWAY PERFORMANCE PROGRAM - BRIDGE	0063-0654	I-84 TR 825	NHS - REHAB BR 01686B o/ US 44 & COLUMBUS BLVD - AC CONVERSION	CON	2021	5	4	0	0	

Capitol Region Transportation Improvement Program  
FFY2021-2024 **DRAFT**

Town	Region	Program	Proj	RouteSystem	Description	Phase	Year	TOT \$000s	Fed \$000s	State \$000s	Local \$000s	Comment
HARTFORD	CAPITOL	STP-ANYWHERE	0063-0725	MISC	DRS: MOTOR FUEL TAX ENFORCEMENT - AC ENTRY	CON	2021	0	0	0	0	
HARTFORD	CAPITOL	STP-ANYWHERE	0063-0725	MISC	DRS: MOTOR FUEL TAX ENFORCEMENT - AC CONVERSION	CON	2021	35	35	0	0	
HARTFORD	CAPITOL	TRANSPORTATION ALTERNATIVES PROGRAM	0063-0721	RIVERWALK	PED/BIKE TRAIL EXTENSION, FROM THE BOATHOUSE TO WESTON STREET	CON	2021	2500	2000	0	500	
HARTFORD URBANIZED AREA	CAPITOL	FTA SECTION 5310 ENHANCED MOBILITY	0170-XXXX	VARIOUS BUS	SEC 5310 PRGRM-ENHANCED MOBILITY OF SENIORS/INDIVIDUALS w/DISABILITIES-HARTFORD	OTH	2021	1063	850	0	213	
HARTFORD URBANIZED AREA	CAPITOL	FTA SECTION 5310 ENHANCED MOBILITY	0170-XXXX	VARIOUS BUS	SEC 5310 PRGRM-ENHANCED MOBILITY OF SENIORS/INDIVIDUALS w/DISABILITIES-HARTFORD	OTH	2022	1095	876	0	219	
HARTFORD URBANIZED AREA	CAPITOL	FTA SECTION 5310 ENHANCED MOBILITY	0170-XXXX	VARIOUS BUS	SEC 5310 PRGRM-ENHANCED MOBILITY OF SENIORS/INDIVIDUALS w/DISABILITIES-HARTFORD	OTH	2023	1128	902	0	226	
HARTFORD URBANIZED AREA	CAPITOL	FTA SECTION 5310 ENHANCED MOBILITY	0170-XXXX	VARIOUS BUS	SEC 5310 PRGRM-ENHANCED MOBILITY OF SENIORS/INDIVIDUALS w/DISABILITIES-HARTFORD	OTH	2024	1162	929	0	232	
MANCHESTER	CAPITOL	STP-URBAN	0076-0220	CT 83 & OAKLAND ST	TWO ROUNDABOUTS - 83 AT OAKLAND; OAKLAND AT LOCAL RDS	CON	2021	5500	4400	1100	0	
NEW BRITAIN	CAPITOL	CONGESTION MITIGATION & AIR QUALITY	0088-0192	VARIOUS	UPGRADE SIGNALS AT VARIOUS INTERSECTIONS	CON	2021	2670	2670	0	0	
NEWINGTON	CAPITOL	NATIONAL HIGHWAY PERFORMANCE PROGRAM	0093-0228	VARIOUS	NEWINGTON HIGHWAY OPERATIONS CENTER - AC CONVERSION	OTH	2021	4710	3768	942	0	
NEWINGTON	CAPITOL	NATIONAL HIGHWAY PERFORMANCE PROGRAM	0093-0228	VARIOUS	NEWINGTON HIGHWAY OPERATIONS CENTER - AC ENTRY	OTH	2021	0	0	0	0	
NEWINGTON	CAPITOL	NATIONAL HIGHWAY PERFORMANCE PROGRAM	0093-0229	VARIOUS	NEWINGTON HIGHWAY OPERATIONS PROCUREMENT - AC CONVERSION	OTH	2021	2315	1852	463	0	
NEWINGTON	CAPITOL	NATIONAL HIGHWAY PERFORMANCE PROGRAM	0093-0229	VARIOUS	NEWINGTON HIGHWAY OPERATIONS PROCUREMENT - AC ENTRY	OTH	2021	0	0	0	0	
NEWINGTON	CAPITOL	NATIONAL HIGHWAY PERFORMANCE PROGRAM	0093-XHOC	VARIOUS	NEWINGTON HIGHWAY OPERATIONS CENTER - AC ENTRY	OTH	2022	0	0	0	0	



Capitol Region Transportation Improvement Program  
FFY2021-2024 **DRAFT**

Town	Region	Program	Proj	RouteSystem	Description	Phase	Year	TOT \$000s	Fed \$000s	State \$000s	Local \$000s	Comment
NEWINGTON	CAPITOL	NATIONAL HIGHWAY PERFORMANCE PROGRAM	0093-XHOC	VARIOUS	NEWINGTON HIGHWAY OPERATIONS CENTER - AC CONVERSION	OTH	2022	4800	3840	960	0	
NEWINGTON	CAPITOL	NATIONAL HIGHWAY PERFORMANCE PROGRAM	0093-XHOC	VARIOUS	NEWINGTON HIGHWAY OPERATIONS CENTER - AC CONVERSION	OTH	2023	4800	3840	960	0	
NEWINGTON	CAPITOL	NATIONAL HIGHWAY PERFORMANCE PROGRAM	0093-XHOC	VARIOUS	NEWINGTON HIGHWAY OPERATIONS CENTER - AC CONVERSION	OTH	2024	4800	3840	960	0	
NEWINGTON	CAPITOL	NATIONAL HIGHWAY PERFORMANCE PROGRAM	0093-XHOC	VARIOUS	NEWINGTON HIGHWAY OPERATIONS CENTER - AC CONVERSION	OTH	FYI	4800	3840	960	0	
NEWINGTON	CAPITOL	NATIONAL HIGHWAY PERFORMANCE PROGRAM	0093-XPRO	VARIOUS	NEWINGTON HIGHWAY OPERATIONS PROCUREMENT - AC CONVERSION	OTH	2022	2300	1840	460	0	
NEWINGTON	CAPITOL	NATIONAL HIGHWAY PERFORMANCE PROGRAM	0093-XPRO	VARIOUS	NEWINGTON HIGHWAY OPERATIONS PROCUREMENT - AC ENTRY	OTH	2022	0	0	0	0	
NEWINGTON	CAPITOL	NATIONAL HIGHWAY PERFORMANCE PROGRAM	0093-XPRO	VARIOUS	NEWINGTON HIGHWAY OPERATIONS PROCUREMENT - AC CONVERSION	OTH	2023	2300	1840	460	0	
NEWINGTON	CAPITOL	NATIONAL HIGHWAY PERFORMANCE PROGRAM	0093-XPRO	VARIOUS	NEWINGTON HIGHWAY OPERATIONS PROCUREMENT - AC CONVERSION	OTH	2024	2300	1840	460	0	
NEWINGTON	CAPITOL	NATIONAL HIGHWAY PERFORMANCE PROGRAM	0093-XPRO	VARIOUS	NEWINGTON HIGHWAY OPERATIONS PROCUREMENT - AC CONVERSION	OTH	FYI	2300	1840	460	0	
RURAL	MULTIPLE	FTA SECTION 5310 ENHANCED MOBILITY	0170-XXXX	VARIOUS BUS	SEC 5310 PRGRM-ENHANCED MOBLTY OF SENIORS/INDIVIDUALS w/DISABILITIES-RURAL	OTH	2021	352	282	0	70	
RURAL	MULTIPLE	FTA SECTION 5310 ENHANCED MOBILITY	0170-XXXX	VARIOUS BUS	SEC 5310 PRGRM-ENHANCED MOBLTY OF SENIORS/INDIVIDUALS w/DISABILITIES-RURAL	OTH	2022	363	290	0	73	
RURAL	MULTIPLE	FTA SECTION 5310 ENHANCED MOBILITY	0170-XXXX	VARIOUS BUS	SEC 5310 PRGRM-ENHANCED MOBLTY OF SENIORS/INDIVIDUALS w/DISABILITIES-RURAL	OTH	2023	374	299	0	75	
RURAL	MULTIPLE	FTA SECTION 5310 ENHANCED MOBILITY	0170-XXXX	VARIOUS BUS	SEC 5310 PRGRM-ENHANCED MOBLTY OF SENIORS/INDIVIDUALS w/DISABILITIES-RURAL	OTH	2024	385	308	0	77	
SPFLD URBANIZED AREA	CAPITOL	FTA SECTION 5310 ENHANCED MOBILITY	0170-XXXX	VARIOUS BUS	SEC 5310 PRGRM-ENHANCED MOBLTY OF SENIORS/INDIVIDUALS w/DISABILITIES-SPFLD	OTH	2021	112	90	0	22	

Capitol Region Transportation Improvement Program  
FFY2021-2024 **DRAFT**

Town	Region	Program	Proj	RouteSystem	Description	Phase	Year	TOT \$000s	Fed \$000s	State \$000s	Local \$000s	Comment
SPFLD URBANIZED AREA	CAPITOL	FTA SECTION 5310 ENHANCED MOBILITY	0170- XXXX	VARIOUS BUS	SEC 5310 PRGRM-ENHANCED MOBILITY OF SENIORS/INDIVIDUALS w/DISABILITIES-SPFLD	OTH	2022	116	93	0	23	
SPFLD URBANIZED AREA	CAPITOL	FTA SECTION 5310 ENHANCED MOBILITY	0170- XXXX	VARIOUS BUS	SEC 5310 PRGRM-ENHANCED MOBILITY OF SENIORS/INDIVIDUALS w/DISABILITIES-SPFLD	OTH	2023	119	95	0	24	
SPFLD URBANIZED AREA	CAPITOL	FTA SECTION 5310 ENHANCED MOBILITY	0170- XXXX	VARIOUS BUS	SEC 5310 PRGRM-ENHANCED MOBILITY OF SENIORS/INDIVIDUALS w/DISABILITIES-SPFLD	OTH	2024	123	98	0	25	
STAFFORD	CAPITOL	STP-OTHER	0134- 0148	CT 32/CT 190	MODERN ROUNDABOUT AT ROUTES 32 & 190	CON	2021	1000	800	200	0	
STATEWIDE	STATEWIDE	BRIDGE	0170- 0BRX	VARIOUS	ON/OFF-SYSTEMS BRIDGE IMPROVEMENTS, BRX & BRZ (BRIDGE REPORT)	ALL	2021	50000	40000	10000	0	
STATEWIDE	STATEWIDE	BRIDGE	0170- 0BRX	VARIOUS	ON/OFF-SYSTEMS BRIDGE IMPROVEMENTS, BRX & BRZ (BRIDGE REPORT)	ALL	2022	50000	40000	10000	0	
STATEWIDE	STATEWIDE	BRIDGE	0170- 0BRX	VARIOUS	ON/OFF-SYSTEMS BRIDGE IMPROVEMENTS, BRX & BRZ (BRIDGE REPORT)	ALL	2023	50000	40000	10000	0	
STATEWIDE	STATEWIDE	BRIDGE	0170- 0BRX	VARIOUS	ON/OFF-SYSTEMS BRIDGE IMPROVEMENTS, BRX & BRZ (BRIDGE REPORT)	ALL	2024	50000	40000	10000	0	
STATEWIDE	STATEWIDE	FTA SECTION 5307 CAPITAL	0170- XXXX	VARIOUS	TRANSIT CAPITAL PLANNING FY 22	OTH	2022	450	360	90	0	
STATEWIDE	STATEWIDE	FTA SECTION 5307 CAPITAL	0170- XXXX	VARIOUS	TRANSIT CAPITAL PLANNING FY 23	OTH	2023	450	360	90	0	
STATEWIDE	STATEWIDE	FTA SECTION 5307 CAPITAL	0170- XXXX	VARIOUS	TRANSIT CAPITAL PLANNING FY 24	OTH	2024	450	360	90	0	
STATEWIDE	STATEWIDE	FTA SECTION 5307 CARRYOVER	0170- XXXX	VARIOUS	TRANSIT CAPITAL PLANNING FY 21	OTH	2021	450	360	90	0	
STATEWIDE	STATEWIDE	HIGHWAY SAFETY IMPROVEMENT PROGRAM	0170- SFTY	VARIOUS	SAFETY PROGRAM, HSIP - RURAL & OTHER (SAFETY REPORT)	ALL	2021	22222	20000	2222	0	
STATEWIDE	STATEWIDE	HIGHWAY SAFETY IMPROVEMENT PROGRAM	0170- SFTY	VARIOUS	SAFETY PROGRAM, HSIP - RURAL & OTHER (SAFETY REPORT)	ALL	2022	22222	20000	2222	0	



Capitol Region Transportation Improvement Program  
FFY2021-2024 **DRAFT**

Town	Region	Program	Proj	RouteSystem	Description	Phase	Year	TOT \$000s	Fed \$000s	State \$000s	Local \$000s	Comment
STATEWIDE	STATEWIDE	HIGHWAY SAFETY IMPROVEMENT PROGRAM	0170-SFTY	VARIOUS	SAFETY PROGRAM, HSIP - RURAL & OTHER (SAFETY REPORT)	ALL	2023	22222	20000	2222	0	
STATEWIDE	STATEWIDE	HIGHWAY SAFETY IMPROVEMENT PROGRAM	0170-SFTY	VARIOUS	SAFETY PROGRAM, HSIP - RURAL & OTHER (SAFETY REPORT)	ALL	2024	22222	20000	2222	0	
STATEWIDE	STATEWIDE	HIGHWAY SAFETY IMPROVEMENT PROGRAM	CHMP-XXXX	VARIOUS	CHAMP SAFETY SERVICE PATROL - AC ENTRY	OTH	2021	0	0	0	0	
STATEWIDE	STATEWIDE	HIGHWAY SAFETY IMPROVEMENT PROGRAM	CHMP-XXXX	VARIOUS	CHAMP SAFETY SERVICE PATROL - AC CONVERSION	OTH	2021	4537	4083	0	454	
STATEWIDE	STATEWIDE	HIGHWAY SAFETY IMPROVEMENT PROGRAM	CHMP-XXXX	VARIOUS	CHAMP SAFETY SERVICE PATROL - AC CONVERSION	OTH	2022	4537	4083	0	454	
STATEWIDE	STATEWIDE	HIGHWAY SAFETY IMPROVEMENT PROGRAM	CHMP-XXXX	VARIOUS	CHAMP SAFETY SERVICE PATROL - AC CONVERSION	OTH	2023	4537	4083	0	454	
STATEWIDE	STATEWIDE	HIGHWAY SAFETY IMPROVEMENT PROGRAM	CHMP-XXXX	VARIOUS	CHAMP SAFETY SERVICE PATROL - AC CONVERSION	OTH	2024	4537	4083	0	454	
STATEWIDE	STATEWIDE	NATIONAL HIGHWAY PERFORMANCE PROGRAM	170S-SNHS	VARIOUS	CE SIGN SUPPORT INSPECTION - NHS ROADS - AC ENTRY	OTH	2021	0	0	0	0	
STATEWIDE	STATEWIDE	NATIONAL HIGHWAY PERFORMANCE PROGRAM	170S-SNHS	VARIOUS	CE SIGN SUPPORT INSPECTION - NHS ROADS - AC CONVERSION	OTH	2021	2250	1800	450	0	
STATEWIDE	STATEWIDE	NATIONAL HIGHWAY PERFORMANCE PROGRAM	170S-SNHS	VARIOUS	CE SIGN SUPPORT INSPECTION - NHS ROADS - AC CONVERSION	OTH	2022	2250	1800	450	0	
STATEWIDE	STATEWIDE	NATIONAL HIGHWAY PERFORMANCE PROGRAM	170S-SNHS	VARIOUS	CE SIGN SUPPORT INSPECTION - NHS ROADS - AC CONVERSION	OTH	2023	2250	1800	450	0	
STATEWIDE	STATEWIDE	NATIONAL HIGHWAY PERFORMANCE PROGRAM	170S-SNHS	VARIOUS	CE SIGN SUPPORT INSPECTION - NHS ROADS - AC CONVERSION	OTH	2024	2250	1800	450	0	
STATEWIDE	STATEWIDE	NATIONAL HIGHWAY PERFORMANCE PROGRAM	170S-SNHS	VARIOUS	CE SIGN SUPPORT INSPECTION - NHS ROADS - AC CONVERSION	OTH	FYI	2250	1800	450	0	
STATEWIDE	STATEWIDE	NATIONAL HIGHWAY PERFORMANCE PROGRAM - BRIDGE	0170-3548	VARIOUS INTERSTATE	PIN & HANGER ASSEMBLIES FOR FRACTURE CRITICAL INTERSTATE NBI BRIDGES	FD	2021	150	135	15	0	

Capitol Region Transportation Improvement Program  
FFY2021-2024 **DRAFT**

Town	Region	Program	Proj	RouteSystem	Description	Phase	Year	TOT \$000s	Fed \$000s	State \$000s	Local \$000s	Comment
STATEWIDE	STATEWIDE	NATIONAL HIGHWAY PERFORMANCE PROGRAM - BRIDGE	0170-3548	VARIOUS	PIN & HANGER ASSEMBLIES FOR FRACTURE CRITICAL INTERSTATE NBI BRIDGES	ROW	2021	50	45	5	0	
STATEWIDE	STATEWIDE	NATIONAL HIGHWAY PERFORMANCE PROGRAM - BRIDGE	0170-3548	VARIOUS INTERSTATE	PIN & HANGER ASSEMBLIES FOR FRACTURE CRITICAL INTERSTATE NBI BRIDGES	CON	2023	16600	14940	1660	0	
STATEWIDE	STATEWIDE	NATIONAL HIGHWAY PERFORMANCE PROGRAM - BRIDGE	170C-ENHS	VARIOUS	CE BRIDGE INSPECTION - NHS ROADS, NBI BRIDGES ONLY - AC CONVERSION	OTH	2021	15000	12000	3000	0	
STATEWIDE	STATEWIDE	NATIONAL HIGHWAY PERFORMANCE PROGRAM - BRIDGE	170C-ENHS	VARIOUS	CE BRIDGE INSPECTION - NHS ROADS, NBI BRIDGES ONLY - AC ENTRY	OTH	2021	0	0	0	0	
STATEWIDE	STATEWIDE	NATIONAL HIGHWAY PERFORMANCE PROGRAM - BRIDGE	170C-ENHS	VARIOUS	CE BRIDGE INSPECTION - NHS ROADS, NBI BRIDGES ONLY - AC CONVERSION	OTH	2022	15000	12000	3000	0	
STATEWIDE	STATEWIDE	NATIONAL HIGHWAY PERFORMANCE PROGRAM - BRIDGE	170C-ENHS	VARIOUS	CE BRIDGE INSPECTION - NHS ROADS, NBI BRIDGES ONLY - AC CONVERSION	OTH	2023	15000	12000	3000	0	
STATEWIDE	STATEWIDE	NATIONAL HIGHWAY PERFORMANCE PROGRAM - BRIDGE	170C-ENHS	VARIOUS	CE BRIDGE INSPECTION - NHS ROADS, NBI BRIDGES ONLY - AC CONVERSION	OTH	2024	15000	12000	3000	0	
STATEWIDE	STATEWIDE	NATIONAL HIGHWAY PERFORMANCE PROGRAM - BRIDGE	170C-ENHS	VARIOUS	CE BRIDGE INSPECTION- NHS ROADS, NBI BRIDGES ONLY - AC CONVERSION	OTH	FYI	15000	12000	3000	0	
STATEWIDE	STATEWIDE	NATIONAL HIGHWAY PERFORMANCE PROGRAM - BRIDGE	170S-FNHS	VARIOUS	SF BRIDGE INSPECTION - NHS ROADS - AC ENTRY	OTH	2021	0	0	0	0	
STATEWIDE	STATEWIDE	NATIONAL HIGHWAY PERFORMANCE PROGRAM - BRIDGE	170S-FNHS	VARIOUS	SF BRIDGE INSPECTION - NHS ROADS - AC CONVERSION	OTH	2021	2000	1600	400	0	
STATEWIDE	STATEWIDE	NATIONAL HIGHWAY PERFORMANCE PROGRAM - BRIDGE	170S-FNHS	VARIOUS	SF BRIDGE INSPECTION - NHS ROADS - AC CONVERSION	OTH	2022	2000	1600	400	0	
STATEWIDE	STATEWIDE	NATIONAL HIGHWAY PERFORMANCE PROGRAM - BRIDGE	170S-FNHS	VARIOUS	SF BRIDGE INSPECTION - NHS ROADS - AC CONVERSION	OTH	2023	2000	1600	400	0	
STATEWIDE	STATEWIDE	NATIONAL HIGHWAY PERFORMANCE PROGRAM - BRIDGE	170S-FNHS	VARIOUS	SF BRIDGE INSPECTION - NHS ROADS - AC CONVERSION	OTH	2024	2000	1600	400	0	
STATEWIDE	STATEWIDE	NATIONAL HIGHWAY PERFORMANCE PROGRAM - BRIDGE	170S-FNHS	VARIOUS	SF BRIDGE INSPECTION - NHS ROADS - AC CONVERSION	OTH	FYI	2000	1600	400	0	

Capitol Region Transportation Improvement Program  
FFY2021-2024 **DRAFT**

Town	Region	Program	Proj	RouteSystem	Description	Phase	Year	TOT \$000s	Fed \$000s	State \$000s	Local \$000s	Comment
STATEWIDE	STATEWIDE	NATIONAL HIGHWAY PERFORMANCE PROGRAM - BRIDGE	BRDG-LRNH	VARIOUS	LOAD RATINGS FOR BRIDGES - NHS ROADS - AC CONVERSION	OTH	2021	2000	1600	400	0	
STATEWIDE	STATEWIDE	NATIONAL HIGHWAY PERFORMANCE PROGRAM - BRIDGE	BRDG-LRNH	VARIOUS	LOAD RATINGS FOR BRIDGES - NHS ROADS - AC ENTRY	OTH	2021	0	0	0	0	
STATEWIDE	STATEWIDE	NATIONAL HIGHWAY PERFORMANCE PROGRAM - BRIDGE	BRDG-LRNH	VARIOUS	LOAD RATINGS FOR BRIDGES - NHS ROADS - AC CONVERSION	OTH	2022	2000	1600	400	0	
STATEWIDE	STATEWIDE	NATIONAL HIGHWAY PERFORMANCE PROGRAM - BRIDGE	BRDG-LRNH	VARIOUS	LOAD RATINGS FOR BRIDGES - NHS ROADS - AC CONVERSION	OTH	2023	2000	1600	400	0	
STATEWIDE	STATEWIDE	NATIONAL HIGHWAY PERFORMANCE PROGRAM - BRIDGE	BRDG-LRNH	VARIOUS	LOAD RATINGS FOR BRIDGES - NHS ROADS - AC CONVERSION	OTH	2024	2000	1600	400	0	
STATEWIDE	STATEWIDE	NATIONAL HIGHWAY PERFORMANCE PROGRAM - BRIDGE	BRDG-LRNH	VARIOUS	LOAD RATINGS FOR BRIDGES - NHS ROADS - AC CONVERSION	OTH	FYI	2000	1600	400	0	
STATEWIDE	STATEWIDE	STP-ANYWHERE	0170-3417	VARIOUS	MAST ARM & SPAN POLE INSPECTIONS - AC CONVERSION	OTH	2021	600	480	120	0	
STATEWIDE	STATEWIDE	STP-ANYWHERE	0170-3417	VARIOUS	MAST ARM & SPAN POLE INSPECTIONS - AC ENTRY	OTH	2021	0	0	0	0	
STATEWIDE	STATEWIDE	STP-ANYWHERE	0170-3417	VARIOUS	MAST ARM & SPAN POLE INSPECTIONS - AC CONVERSION	OTH	2022	150	120	30	0	
STATEWIDE	STATEWIDE	STP-ANYWHERE	0170-3439		FEDERAL ELIGIBLE PE: TA PROGRAM PROJ DEV/SCOPING - AC CONVERSION	PE	2021	660	528	132	0	
STATEWIDE	STATEWIDE	STP-ANYWHERE	0170-3439		FEDERAL ELIGIBLE PE: TA PROGRAM PROJ DEV/SCOPING - AC ENTRY	PE	2021	0	0	0	0	
STATEWIDE	STATEWIDE	STP-ANYWHERE	170S-SNON	VARIOUS	CE SIGN SUPPORT INSPECTION - NON-NHS ROADS - AC ENTRY	OTH	2021	0	0	0	0	
STATEWIDE	STATEWIDE	STP-ANYWHERE	170S-SNON	VARIOUS	CE SIGN SUPPORT INSPECTION - NON-NHS ROADS - AC CONVERSION	OTH	2021	500	400	100	0	
STATEWIDE	STATEWIDE	STP-ANYWHERE	170S-SNON	VARIOUS	CE SIGN SUPPORT INSPECTION- NON-NHS ROADS - AC CONVERSION	OTH	2022	500	400	100	0	

Capitol Region Transportation Improvement Program  
FFY2021-2024 **DRAFT**

Town	Region	Program	Proj	RouteSystem	Description	Phase	Year	TOT \$000s	Fed \$000s	State \$000s	Local \$000s	Comment
STATEWIDE	STATEWIDE	STP-ANYWHERE	170S-SNON	VARIOUS	CE SIGN SUPPORT INSPECTION - NON-NHS ROADS - AC CONVERSION	OTH	2023	500	400	100	0	
STATEWIDE	STATEWIDE	STP-ANYWHERE	170S-SNON	VARIOUS	CE SIGN SUPPORT INSPECTION - NON-NHS ROADS - AC CONVERSION	OTH	2024	500	400	100	0	
STATEWIDE	STATEWIDE	STP-ANYWHERE	170S-SNON	VARIOUS	CE SIGN SUPPORT INSPECTION - NON-NHS ROADS - AC CONVERSION	OTH	FYI	500	400	100	0	
STATEWIDE	STATEWIDE	STP-ANYWHERE	MASP-INSP	VARIOUS	MAST ARM & SPAN POLE INSPECTIONS	OTH	2024	700	560	140	0	
STATEWIDE	STATEWIDE	STP-ANYWHERE	PVMT-MARK		LINE STRIPING/PAVEMENT MARKINGS - AC ENTRY	CON	2021	0	0	0	0	
STATEWIDE	STATEWIDE	STP-ANYWHERE	PVMT-MARK		LINE STRIPING/PAVEMENT MARKINGS - AC CONVERSION	CON	2021	8000	8000	0	0	
STATEWIDE	STATEWIDE	STP-ANYWHERE	PVMT-MARK		LINE STRIPING/PAVEMENT MARKINGS - AC CONVERSION	CON	2022	8000	8000	0	0	
STATEWIDE	STATEWIDE	STP-ANYWHERE	PVMT-MARK		LINE STRIPING/PAVEMENT MARKINGS - AC CONVERSION	CON	2023	8000	8000	0	0	
STATEWIDE	STATEWIDE	STP-ANYWHERE	PVMT-MARK		LINE STRIPING/PAVEMENT MARKINGS - AC CONVERSION	CON	2024	8000	8000	0	0	
STATEWIDE	STATEWIDE	STP-ANYWHERE BRIDGE	170C-ENON	VARIOUS	CE BRIDGE INSPECTION - NON-NHS ROADS - AC ENTRY	OTH	2021	0	0	0	0	
STATEWIDE	STATEWIDE	STP-ANYWHERE BRIDGE	170C-ENON	VARIOUS	CE BRIDGE INSPECTION - NON-NHS ROADS - AC CONVERSION	OTH	2021	8000	6400	1600	0	
STATEWIDE	STATEWIDE	STP-ANYWHERE BRIDGE	170C-ENON	VARIOUS	CE BRIDGE INSPECTION - NON-NHS ROADS - AC CONVERSION	OTH	2022	8000	6400	1600	0	
STATEWIDE	STATEWIDE	STP-ANYWHERE BRIDGE	170C-ENON	VARIOUS	CE BRIDGE INSPECTION - NON-NHS ROADS - AC CONVERSION	OTH	2023	8000	6400	1600	0	
STATEWIDE	STATEWIDE	STP-ANYWHERE BRIDGE	170C-ENON	VARIOUS	CE BRIDGE INSPECTION - NON-NHS ROADS - AC CONVERSION	OTH	2024	8000	6400	1600	0	

Capitol Region Transportation Improvement Program  
FFY2021-2024 **DRAFT**

Town	Region	Program	Proj	RouteSystem	Description	Phase	Year	TOT \$000s	Fed \$000s	State \$000s	Local \$000s	Comment
STATEWIDE	STATEWIDE	STP-ANYWHERE BRIDGE	170C- ENON	VARIOUS	CE BRIDGE INSPECTION - NON-NHS ROADS - AC CONVERSION	OTH	FYI	8000	6400	1600	0	
STATEWIDE	STATEWIDE	STP-ANYWHERE BRIDGE	170S- FNON	VARIOUS	SF BRIDGE INSPECTION - NON-NHS ROADS - AC ENTRY	OTH	2021	0	0	0	0	
STATEWIDE	STATEWIDE	STP-ANYWHERE BRIDGE	170S- FNON	VARIOUS	SF BRIDGE INSPECTION - NON-NHS ROADS - AC CONVERSION	OTH	2021	2500	2000	500	0	
STATEWIDE	STATEWIDE	STP-ANYWHERE BRIDGE	170S- FNON	VARIOUS	SF BRIDGE INSPECTION - NON-NHS ROADS - AC CONVERSION	OTH	2022	2500	2000	500	0	
STATEWIDE	STATEWIDE	STP-ANYWHERE BRIDGE	170S- FNON	VARIOUS	SF BRIDGE INSPECTION - NON-NHS ROADS - AC CONVERSION	OTH	2023	2500	2000	500	0	
STATEWIDE	STATEWIDE	STP-ANYWHERE BRIDGE	170S- FNON	VARIOUS	SF BRIDGE INSPECTION - NON-NHS ROADS - AC CONVERSION	OTH	2024	2500	2000	500	0	
STATEWIDE	STATEWIDE	STP-ANYWHERE BRIDGE	170S- FNON	VARIOUS	SF BRIDGE INSPECTION - NON-NHS ROADS - AC CONVERSION	OTH	FYI	2500	2000	500	0	
STATEWIDE	STATEWIDE	STP-ANYWHERE BRIDGE	BRDG- LRNO	VARIOUS	LOAD RATINGS FOR BRIDGES - NON-NHS ROADS - AC CONVERSION	OTH	2021	1000	800	200	0	
STATEWIDE	STATEWIDE	STP-ANYWHERE BRIDGE	BRDG- LRNO	VARIOUS	LOAD RATINGS FOR BRIDGES - NON-NHS ROADS - AC ENTRY	OTH	2021	0	0	0	0	
STATEWIDE	STATEWIDE	STP-ANYWHERE BRIDGE	BRDG- LRNO	VARIOUS	LOAD RATINGS FOR BRIDGES - NON-NHS ROADS - AC CONVERSION	OTH	2022	1000	800	200	0	
STATEWIDE	STATEWIDE	STP-ANYWHERE BRIDGE	BRDG- LRNO	VARIOUS	LOAD RATINGS FOR BRIDGES - NON-NHS ROADS - AC CONVERSION	OTH	2023	1000	800	200	0	
STATEWIDE	STATEWIDE	STP-ANYWHERE BRIDGE	BRDG- LRNO	VARIOUS	LOAD RATINGS FOR BRIDGES - NON-NHS ROADS - AC CONVERSION	OTH	2024	1000	800	200	0	
STATEWIDE	STATEWIDE	STP-ANYWHERE BRIDGE	BRDG- LRNO	VARIOUS	LOAD RATINGS FOR BRIDGES - NON-NHS ROADS - AC CONVERSION	OTH	FYI	1000	800	200	0	
TOLLAND	CAPITOL	STP-RURAL	0142- 0152	CT 74	REPLACE BR 01120 OVER SKUNGAMAUG RIVER FD		2021	300	240	60	0	

Capitol Region Transportation Improvement Program  
FFY2021-2024 **DRAFT**

Town	Region	Program	Proj	RouteSystem	Description	Phase	Year	TOT \$000s	Fed \$000s	State \$000s	Local \$000s	Comment
TOLLAND	CAPITOL	STP-RURAL	0142-0152	CT 74	REPLACE BR 01120 OVER SKUNGAMAUG RIVER ROW		2021	50	40	10	0	
TOLLAND	CAPITOL	STP-RURAL	0142-0152	CT 74	REPLACE BR 01120 OVER SKUNGAMAUG RIVER CON	FYI		1600	1280	320	0	
VARIOUS	STATEWIDE	FTA SECTION 5307 CAPITAL	0170-3403	VARIOUS	TRANSIT CAPITAL PLANNING. FY 21	OTH	2021	450	360	90	0	
VARIOUS	STATEWIDE	FTA SECTION 5307 CAPITAL	0170-XXXX	STATEWIDE	STATEWIDE BUS STOP SIGN PROGRAM - IMPLEMENTATION FY 21	OTH	2021	1500	1200	300	0	
VARIOUS	STATEWIDE	FTA SECTION 5307 CAPITAL	0170-XXXX	STATEWIDE	STATEWIDE BUS SHELTER IMPROVEMENT PROGRAM FY 21	OTH	2021	1500	1200	300	0	
VARIOUS	STATEWIDE	FTA SECTION 5307 CAPITAL	0170-XXXX	STATEWIDE	STATEWIDE BUS SHELTER IMPROVEMENT PROGRAM FY 22	OTH	2022	1500	1200	300	0	
VARIOUS	STATEWIDE	FTA SECTION 5307 CAPITAL	0170-XXXX	STATEWIDE	STATEWIDE BUS SHELTER IMPROVEMENTT PROGRAM FY 23	OTH	2023	1500	1200	300	0	
VARIOUS	STATEWIDE	FTA SECTION 5307 CAPITAL	0170-XXXX	STATEWIDE	STATEWIDE BUS SHELTER IMPROVEMENT PROGRAM FY 24	OTH	2024	1500	1200	300	0	
VARIOUS	MULTIPLE	FTA SECTION 5307 CAPITAL	0400-XXXX	CTTRANSIT	CTTRANSIT FACILITY IMPROVEMENTS/MISC ADMIN CAPITAL FY 21	OTH	2021	1250	1000	250	0	
VARIOUS	MULTIPLE	FTA SECTION 5307 CAPITAL	0400-XXXX	CTTRANSIT	CTTRANSIT BUS REPLACEMENTS FY 21	OTH	2021	11875	9500	2375	0	
VARIOUS	MULTIPLE	FTA SECTION 5307 CAPITAL	0400-XXXX	CTTRANSIT	CTTRANSIT - FACILITY IMPROVEMENTS (HARTFORD/STAMFORD) FY 21	ALL	2021	28750	23000	5750	0	
VARIOUS	MULTIPLE	FTA SECTION 5307 CAPITAL	0400-XXXX	CTTRANSIT	CTTRANSIT FACILITY IMPROVEMENTS/MISC ADMIN CAPITAL FY 22	OTH	2022	1000	800	200	0	
VARIOUS	MULTIPLE	FTA SECTION 5307 CAPITAL	0400-XXXX	CTTRANSIT	CTTRANSIT - FACILITY IMPROVEMENTS (HARTFORD/STAMFORD) FY 22	ALL	2022	11368	9094	2274	0	
VARIOUS	MULTIPLE	FTA SECTION 5307 CAPITAL	0400-XXXX	CTTRANSIT	CTTRANSIT BUS REPLACEMENTS FY 22	ACQ	2022	10000	8000	2000	0	



Capitol Region Transportation Improvement Program  
FFY2021-2024 **DRAFT**

Town	Region	Program	Proj	RouteSystem	Description	Phase	Year	TOT \$000s	Fed \$000s	State \$000s	Local \$000s	Comment
VARIOUS	MULTIPLE	FTA SECTION 5307 CAPITAL	0400-XXXX	CTTRANSIT	CTTRANSIT FACILITY IMPROVEMENTS/MISC ADMIN CAPITAL FY 23	OTH	2023	1000	800	200	0	
VARIOUS	MULTIPLE	FTA SECTION 5307 CAPITAL	0400-XXXX	CTTRANSIT	CTTRANSIT FACILITY IMPROVEMENTS /MISC CAPITAL FY 24	OTH	2024	1000	800	200	0	
VARIOUS	MULTIPLE	FTA SECTION 5307 CAPITAL	0400-XXXX	CTTRANSIT	CTTRANSIT - FACILITY IMPROVEMENTS(HARTFORD/STAMFORD) FY 24	ALL	2024	35000	28000	7000	0	
VARIOUS	MULTIPLE	FTA SECTION 5307 CAPITAL	0400-XXXX	CTTRANSIT	CTTRANSIT - BUS REPLACEMENTS FY 24	ACQ	2024	21250	17000	4250	0	
VARIOUS	STATEWIDE	FTA SECTION 5307 CARRYOVER	0170-XXXX	STATEWIDE	STATEWIDE BUS STOP SIGN PROGRAM-IMPLEMENTATION.	OTH	2021	500	400	100	0	
VARIOUS	STATEWIDE	FTA SECTION 5307 CARRYOVER	0170-XXXX	STATEWIDE	STATEWIDE BUS SHELTER IMPROVEMENT PROGRAM. FY 21	OTH	2021	1500	1200	300	0	
VARIOUS	MULTIPLE	FTA SECTION 5307 CARRYOVER	0400-XXXX	CTTRANSIT	CTTRANSIT BUS REPLACEMENT	CON	2021	13750	11000	2750	0	
VARIOUS	MULTIPLE	FTA SECTION 5307 CARRYOVER	0400-XXXX	CTTRANSIT	CTTRANSIT FACILITY IMPROVEMENT/MISC. ADMIN CAPITAL.	OTH	2021	800	640	160	0	
VARIOUS	STATEWIDE	FTA SECTION 5311 RURAL ASSISTANCE	0170-XXXX	SECTION 5311	SECTION 5311 PROG ADJUST TO ACTUAL APPR, ADMIN & RTAP PROG FFY 2021	OTH	2021	500	500	0	0	
VARIOUS	STATEWIDE	FTA SECTION 5311 RURAL ASSISTANCE	0170-XXXX	SECTION 5311	SECTION 5311 PROG ADJUST TO ACTUAL APPR, ADMIN & RTAP PROG FFY 2022	OTH	2022	500	500	0	0	
VARIOUS	STATEWIDE	FTA SECTION 5311 RURAL ASSISTANCE	0170-XXXX	SECTION 5311	SECTION 5311 PROG ADJUST TO ACTUAL APPR, ADMIN & RTAP PROG FFY 2023	OTH	2023	500	500	0	0	
VARIOUS	STATEWIDE	FTA SECTION 5311 RURAL ASSISTANCE	0170-XXXX	SECTION 5311	SECTION 5311 PROG ADJUST TO ACTUAL APPR, ADMIN & RTAP PROG FFY 2024	OTH	2024	500	500	0	0	
VARIOUS	MULTIPLE	FTA SECTION 5337 STATE OF GOOD REPAIR	0171-XXXX	CTFASTRAK	CTFASTRAK INFRASTRUCTURE/STATION/FACILITY IMPROVEMENTS FY 21	CON	2021	1480	1184	296	0	
VARIOUS	MULTIPLE	FTA SECTION 5337 STATE OF GOOD REPAIR	0171-XXXX	CTFASTRAK	CTFASTRAK INFRASTRUCTURE/STATION/FACILITY IMPROVEMENTS FY 22	CON	2022	1525	1220	305	0	

Capitol Region Transportation Improvement Program  
FFY2021-2024 **DRAFT**

Town	Region	Program	Proj	RouteSystem	Description	Phase	Year	TOT \$000s	Fed \$000s	State \$000s	Local \$000s	Comment
VARIOUS	MULTIPLE	FTA SECTION 5337 STATE OF GOOD REPAIR	0171- XXXX	CTFASTRAK	CTFASTRAK INFRASTRUCTURE/STATION/FACILITY IMPROVEMENTS FY 23	CON	2023	1556	1245	311	0	
VARIOUS	MULTIPLE	FTA SECTION 5337 STATE OF GOOD REPAIR	0171- XXXX	CTFASTRAK	CTFASTRAK INFRASTRUCTURE/STATION/FACILITY IMPROVEMENTS FY 24	CON	2024	1606	1285	321	0	
VARIOUS	MULTIPLE	FTA SECTION 5339 BUS AND BUS FACILITIES FORMULA	0400- XXXX	CTTRANSIT	CTTRANSIT SYSTEMWIDE BUS REPLACEMENTS FY 21	ACQ	2021	1875	1500	375	0	
VARIOUS	MULTIPLE	FTA SECTION 5339 BUS AND BUS FACILITIES FORMULA	0400- XXXX	CTTRANSIT	CTTRANSIT FACILITY IMPROVEMENTS FY 21	ALL	2021	3978	3182	796	0	
VARIOUS	MULTIPLE	FTA SECTION 5339 BUS AND BUS FACILITIES FORMULA	0400- XXXX	CTTRANSIT	CTTRANSIT FACILITY IMPROVEMENTS FY 22	ALL	2022	4938	3950	988	0	
VARIOUS	MULTIPLE	FTA SECTION 5339 BUS AND BUS FACILITIES FORMULA	0400- XXXX	CTTRANSIT	CTTRANSIT SYSTEMWIDE BUS REPLACEMENTS FY 22	ACQ	2022	938	750	188	0	
VARIOUS	MULTIPLE	FTA SECTION 5339 BUS AND BUS FACILITIES FORMULA	0400- XXXX	CTTRANSIT	CTTRANSIT FACILITY IMPROVEMENTS FY 23	ALL	2023	938	750	188	0	
VARIOUS	MULTIPLE	FTA SECTION 5339 BUS AND BUS FACILITIES FORMULA	0400- XXXX	CTTRANSIT	CTTRANSIT SYSTEMWIDE BUS REPLACEMENTS FY 23	ACQ	2023	4938	3950	988	0	
VARIOUS	MULTIPLE	FTA SECTION 5339 BUS AND BUS FACILITIES FORMULA	0400- XXXX	CTTRANSIT	CTTRANSIT FACILITY IMPROVEMENTS FY 24	ALL	2024	4938	3950	988	0	
VARIOUS	MULTIPLE	FTA SECTION 5339 BUS AND BUS FACILITIES FORMULA	0400- XXXX	CTTRANSIT	CTTRANSIT SYSTEMWIDE BUS REPLACEMENTS FY 24	ACQ	2024	938	750	188	0	
WINDHAM	MULTIPLE	FTA SECTION 5311 CAPITOL	0474- XXXX	WINDHAM TD	WINDHAM TD - SECTION 5311 CAPITAL FY 2021	OTH	2021	50	40	10	0	
WINDHAM	MULTIPLE	FTA SECTION 5311 CAPITOL	0474- XXXX	WINDHAM TD	WINDHAM TD - SECTION 5311 CAPITAL FY 2022	OTH	2022	600	480	120	0	
WINDHAM	MULTIPLE	FTA SECTION 5311 CAPITOL	0474- XXXX	WINDHAM TD	WINDHAM TD - SECTION 5311 CAPITAL FY 2023	OTH	2023	45	36	9	0	
WINDHAM	MULTIPLE	FTA SECTION 5311 CAPITOL	0474- XXXX	WINDHAM TD	WINDHAM TD - SECTION 5311 CAPITAL FY 2024	OTH	2024	20	16	4	0	



Capitol Region Transportation Improvement Program  
FFY2021-2024 **DRAFT**

Town	Region	Program	Proj	RouteSystem	Description	Phase	Year	TOT \$000s	Fed \$000s	State \$000s	Local \$000s	Comment
WINDHAM	MULTIPLE	FTA SECTION 5311 OPERATING	0474-XXXX	WINDHAM TD	WINDHAM TD - SECTION 5311 OPERATING (FIXED ROUTE) - FY 2021	OTH	2021	830	415	274	141	
WINDHAM	MULTIPLE	FTA SECTION 5311 OPERATING	0474-XXXX	WINDHAM TD	WINDHAM TD - SECTION 5311 OPERATING (JOB ACCESS) - FY 2021	OTH	2021	278	139	139	0	
WINDHAM	MULTIPLE	FTA SECTION 5311 OPERATING	0474-XXXX	WINDHAM TD	WINDHAM TD - SECTION 5311 OPERATING (DIAL A RIDE) - FY 2021	OTH	2021	597	299	197	102	
WINDHAM	MULTIPLE	FTA SECTION 5311 OPERATING	0474-XXXX	WINDHAM TD	WINDHAM TD - SECTION 5311 OPERATING (WILLIMANTIC-DANIELSON) - FY 2021	OTH	2021	49	24	24	0	
WINDHAM	MULTIPLE	FTA SECTION 5311 OPERATING	0474-XXXX	WINDHAM TD	WINDHAM TD - SECTION 5311 OPERATING (WILLIMANTIC-DANIELSON) - FY 2022	OTH	2022	49	24	24	0	
WINDHAM	MULTIPLE	FTA SECTION 5311 OPERATING	0474-XXXX	WINDHAM TD	WINDHAM TD - SECTION 5311 OPERATING (DIAL A RIDE) - FY 2022	OTH	2022	597	299	197	102	
WINDHAM	MULTIPLE	FTA SECTION 5311 OPERATING	0474-XXXX	WINDHAM TD	WINDHAM TD - SECTION 5311 OPERATING (FIXED ROUTE) - FY 2022	OTH	2022	830	415	274	141	
WINDHAM	MULTIPLE	FTA SECTION 5311 OPERATING	0474-XXXX	WINDHAM TD	WINDHAM TD - SECTION 5311 OPERATING (JOB ACCESS) - FY 2022	OTH	2022	278	139	139	0	
WINDHAM	MULTIPLE	FTA SECTION 5311 OPERATING	0474-XXXX	WINDHAM TD	WINDHAM TD - SECTION 5311 OPERATING (WILLIMANTIC-DANIELSON) - FY 2023	OTH	2023	52	26	26	0	
WINDHAM	MULTIPLE	FTA SECTION 5311 OPERATING	0474-XXXX	WINDHAM TD	WINDHAM TD - SECTION 5311 OPERATING (JOB ACCESS) - FY 2023	OTH	2023	295	147	147	0	
WINDHAM	MULTIPLE	FTA SECTION 5311 OPERATING	0474-XXXX	WINDHAM TD	WINDHAM TD - SECTION 5311 OPERATING (DIAL A RIDE) - FY 2023	OTH	2023	633	317	209	108	
WINDHAM	MULTIPLE	FTA SECTION 5311 OPERATING	0474-XXXX	WINDHAM TD	WINDHAM TD - SECTION 5311 OPERATING (FIXED ROUTE) - FY 2023	OTH	2023	880	440	291	150	
WINDHAM	MULTIPLE	FTA SECTION 5311 OPERATING	0474-XXXX	WINDHAM TD	WINDHAM TD - SECTION 5311 OPERATING (DIAL A RIDE) - FY 2024	OTH	2024	671	336	222	114	
WINDHAM	MULTIPLE	FTA SECTION 5311 OPERATING	0474-XXXX	WINDHAM TD	WINDHAM TD - SECTION 5311 OPERATING (FIXED ROUTE) - FY 2024	OTH	2024	933	467	308	159	

Town	Region	Program	Proj	RouteSystem	Description	Phase	Year	TOT \$000s	Fed \$000s	State \$000s	Local \$000s	Comment
WINDHAM	MULTIPLE	FTA SECTION 5311 OPERATING	0474-XXXX	WINDHAM TD	WINDHAM TD - SECTION 5311 OPERATING (JOB ACCESS) - FY 2024	OTH	2024	312	156	156	0	
WINDHAM	MULTIPLE	FTA SECTION 5311 OPERATING	0474-XXXX	WINDHAM TD	WINDHAM TD - SECTION 5311 OPERATING (WILLIMANTIC-DANIELSON) - FY 2024	OTH	2024	55	28	28	0	
WINDSOR LOCKS	CAPITOL	NATIONAL HIGHWAY PERFORMANCE PROGRAM - BRIDGE	0165-0509	I-91	REHAB BR 00454 OVER RIVER, AMTRAK & 159 - AC ENTRY	CON	2021	0	0	0	0	
WINDSOR LOCKS	CAPITOL	NATIONAL HIGHWAY PERFORMANCE PROGRAM - BRIDGE	0165-0509	I-91	REHAB BR 00454 OVER RIVER, AMTRAK & 159 - AC CONVERSION	CON	2021	15556	14000	1556	0	
WINDSOR LOCKS	CAPITOL	NATIONAL HIGHWAY PERFORMANCE PROGRAM - BRIDGE	0165-0509	I-91	REHAB BR 00454 OVER RIVER, AMTRAK & 159 - AC CONVERSION	CON	2022	16244	14620	1624	0	
WINDSOR LOCKS	CAPITOL	SECTION 125 - EARMARK	0165-0468	CT20 @ CT75	REALIGN CT 20 OFF-RAMP TO CT 75	ROW	2021	50	50	0	0	
WINDSOR LOCKS	CAPITOL	SECTION 125 - EARMARK	0165-0468	CT20 @ CT75	REALIGN CT 20 OFF-RAMP TO CT 75	CON	2022	425	425	0	0	
WINDSOR LOCKS	CAPITOL	STP-URBAN	0165-0468	CT20 @ CT75	REALIGN CT 20 OFF-RAMP TO CT 75	CON	2022	2782	2226	278	278	

## **Section F: Performance Targets**

*The final rule on Statewide and Nonmetropolitan Transportation Planning and Metropolitan Transportation Planning, published on May 27, 2016, (FHWA 23 CFR Parts 450 and 771 and FTA 49 CFR Part 613) implements changes to the planning process, including requiring a performance-based approach to planning and requires that the Connecticut Department of Transportation (CTDOT), MPOs and the operators of public transportation use performance measures to document expectations for future performance. Performance management and performance-based planning and programming increases the accountability and transparency of the Federal-aid Program and offers a framework to support improved investment decision-making by focusing on performance outcomes for national transportation goals. FHWA and FTA established national performance measures in areas including safety, infrastructure condition, congestion, system reliability, emissions, freight movement, transit safety and transit state of good repair.*

-- Connecticut State Transportation Improvement Program (STIP) Report  
Connecticut Department of Transportation, September 2020

Metropolitan planning organizations (MPOs), such as CRCOG, are required to select projects based on their impact on federally mandated performance measures. This implementation of performance-based planning is meant to result in a more economically efficient as well as a more financially and environmentally sustainable transportation system. MPOs may either endorse performance targets set by the state department of transportation or set their own targets.

CRCOG has adopted the FHWA performance targets set by CTDOT in the areas of safety, infrastructure condition, and national highway system (NHS) performance, freight, and congestion mitigation and air quality (CMAQ). Furthermore, CRCOG has adopted the FTA performance targets set by CTDOT and its subordinate agencies in the area of Transportation Asset Management (TAM). FTA safety measures have yet to be fully implemented. CRCOG's planning efforts will be aimed at contributing to the attainment of statewide goals rather than the specific regionally defined performance targets.

A current list of performance targets adopted by CRCOG can be found at [www.crcog.org/transportation/performanceasures/](http://www.crcog.org/transportation/performanceasures/). Additional detailed information can be found on the CTDOT website: [www.ct.gov/dot/performanceasures](http://www.ct.gov/dot/performanceasures).

State and regional recipients of FHWA and FTA funds should link their transportation investments to these performance measures through a discussion of the anticipated effect of their TIP's impact on attaining performance targets. This discussion will occur throughout this section.

## Highway Safety

Highway safety is largely determined by the interplay between driver behavior and the built environment. Other factors, such as weather, may also have a significant impact on safety. The five performance measures for highway safety include: (1) the number of fatalities; (2) the rate of fatalities; (3) the number of serious injuries; (4) the rate of serious injuries; and, (5) the number of non-motorized fatalities and serious injuries. The current Highway Safety targets are as follows:

Highway Safety Performance Measures	Target for 2020
<b>Fatalities</b> (yearly number of)	<b>277 or less</b>
<b>Fatality Rate</b> (per 100 million VMT)	<b>0.883 or less</b>
<b>Serious Injuries</b> (yearly number of)	<b>1,547 or less</b>
<b>Serious Injury Rate</b> (per 100 million VMT)	<b>4.93 or less</b>
<b>Non-Motorist Fatalities &amp; Serious Injuries</b> (yearly number of)	<b>307 or less</b>

The CRCOG TIP programs projects to meet the targets set by CTDOT and adopted by CRCOG through a variety of means, including:

- Support for the recommendations of CRCOG's Regional Transportation Safety Plan (RSTP), produced in coordination with CTDOT and their consultants, including those recommendations calling for roadway design-based solutions. Interventions that target driver behavior will also be pursued.
- Support for the Safety Circuit Rider program and working in partnership with UCONN's Technology Transfer Center in addressing safety on local roads and incorporating safety countermeasures into projects.
- Support for CTDOT programmatic or systematic highway safety improvements: Projects or programs that are conducted regularly throughout the state such as signing, pavement marking and guide rail.
- Integrating highway safety in the standard work tasks, and special studies and projects, that are included in the CRCOG Unified Planning Work Program.

## Pavement and Bridge Condition

The four performance measures for pavement condition include the percentage of the Interstate system in Good and Poor condition and the percentage of the non-Interstate National Highway System (NHS) in Good and Poor condition. The two performance measures for Bridge condition include the percentage of NHS Bridges in Good and Poor condition. The current Pavement and Bridge targets are as follows:

Category	System	Bridge and Pavement Performance Measures	Base-line	2-Year Target	4-Year Target
Pavement	Interstate	Pavements of the Interstate System in Good Condition	66.2%	65.5%	<b>64.4%</b>
		Pavements of the Interstate System in Poor Condition	2.2%	2.0%	<b>2.6%</b>
	Non-Interstate NHS	Pavements of the Non-Interstate NHS in Good Condition	42.9%	36.0%	<b>31.9%</b>
		Pavements of the Non-Interstate NHS in Poor Condition	17.0%	6.8%	<b>7.6%</b>
Bridges	All NHS	NHS Bridges Classified as in Good Condition	15.2%	22.1%	<b>26.9%</b>
		NHS Bridges Classified as in Poor Condition	14.0%	7.9%	<b>5.7%</b>

CRCOG will support CTDOT in its efforts to reach targets. CTDOT has a number of tools at its disposal for reaching these targets, including the Pavement Management System and the Bridge Management System which uses a systematic look at conditions to develop optimal strategies. These strategies are included in the CTDOT Transportation Asset Management Plan (TAMP).

CTDOT maintains a Transportation Asset Management Plan (TAMP). The CTDOT TAMP acts as a focal point for information about the assets, their management strategies, long-term expenditure forecasts, and business management processes. CTDOT is required to develop a risk-based TAMP for the National Highway System (NHS) to improve or preserve the condition of the assets and the performance of the system (23 U.S.C. 119(e) (1), MAP-21 § 1106). MAP 21 defines asset management as a strategic and systematic process of operating, maintaining, and improving physical assets, with a focus on engineering and economic analysis based upon quality information, to identify a structured sequence of maintenance, preservation, repair, rehabilitation, and replacement actions that will achieve and sustain a desired state of good repair over the lifecycle of the assets at minimum practicable cost. (23 U.S.C. 101(a) (2), MAP-21 § 1103). Pavement and Bridge State of Good Repair needs are identified, quantified, and prioritized through the TAMP process. Projects to address SOGR repair needs are selected from the TAMP for inclusion in the STIP.

### **System Reliability**

Performances measures of system reliability can be used to assess the impact of various programs on the mobility of people and freight on the NHS. Operational-improvement, capacity-expansion, and to a certain degree highway road and bridge condition improvement projects, impact both congestion and system reliability. Demand-management initiatives also impact system reliability. For passenger traffic, the proportion of the total amount of reliable travel (person-miles on a designated road segment with *reliable travel times*, i.e. not considerably longer than normal travel times) constitutes the performance metric, which is then applied separately to

Interstate and non-Interstate highways within the NHS. The current system reliability targets are as follows:

<b>NHS System</b>	<b>System Performance Measures</b>	<b>Baseline</b>	<b>2-Year Target</b>	<b>4-Year Target</b>
<b>Interstate</b>	<b>Person-Miles Traveled that Are Reliable</b>	79.6%	75.2%	<b>72.1%</b>
<b>Non-Interstate NHS</b>	<b>Person-Miles Traveled that Are Reliable</b>	83.6%	80.0%	<b>76.4%</b>

No one program or effort is specific to system reliability on the NHS as defined above. CRCOG does engage with an internal congestion management process (CMP) as a review at regular intervals, but the CMP is not an effort in and of itself to design and program traffic interventions. Rather, CRCOG can take expected impacts on system reliability into consideration when considering projects for inclusion in its TIP, with the goal of improving system performance.

## Freight Movement

The freight reliability measure is better suited to considerations of the trucking industry than the more general system reliability measure discussed above. Freight traffic occurs at all times of the day, often outside of peak hours, and requires far greater certainty as to the maximum amount of time required to move goods from one location to another. Thus, generous buffer times must be calculated in order to ensure the logistics system functions in an efficient and time effective manner. Freight movement is measured by the Truck Travel Time Reliability (TTTR) index, where the smaller the value of the index, the more reliable the system is. Given the physical characteristics of tractor trailers and their slower speeds compared to other traffic, as well as their geographic concentration of movement within urban highway systems and sensitivity to roadway gradient, trucks can form freight bottlenecks and thus effect the TTTR index in a manner that will not precisely mirror other system reliability measures. In other words, while passenger vehicle travel time reliability can improve, it is more than possible for freight reliability to worsen even though both types of traffic operate at the same time along the NHS. The current freight reliability targets are as follows:

<b>NHS System</b>	<b>Freight Reliability Performance Measure</b>	<b>Baseline</b>	<b>2-Year Target</b>	<b>4-Year Target</b>
<b>Interstate</b>	<b>Truck Travel Time Reliability (TTTR) Index</b>	1.79	1.79	<b>1.83</b>

CRCOG, CTDOT, and other MPOs in Connecticut have access to the most recent INRIX version of the National Performance Management Research Data Set (NPRMDS) from the CATT Labs at the University of Maryland, which is charged by USDOT with collecting travel time data on the NHS around the country. NPMRDS data are regularly obtained and analyzed in an effort to stay informed of current traffic trends.



## Air Quality

USDOT requires that states and MPOs assess the impact of their transportation systems on air quality and specifically the impacts from vehicle exhaust emissions. The performance measure for air quality is based on an assessment of projects selected for funding under the Congestion Mitigation and Air Quality Improvement (CMAQ) program. The CMAQ program's purpose is to fund transportation projects or programs that contribute to the attainment or maintenance of National Ambient Air Quality Standards (NAAQS) in those specific areas. The current Air Quality targets set by CTDOT and endorsed by CRCOG are as follows:

<b>Air Quality Performance Measures (Rate of Reduction)</b>	<b>Baseline</b>	<b>2-Year Target</b>	<b>4-Year Target</b>
<b>Particulate Matter 2.5 (PM2.5)</b>	12.950 kg/day	1.632 kg/day	<b>2.674 kg/day</b>
<b>Nitrogen Oxides (NOx)</b>	462.490 kg/day	67.690 kg/day	<b>102.370 kg/day</b>
<b>Volatile Organic Compounds (VOC)</b>	263.890 kg/ ay	19.320 kg/day	<b>30.140 kg/day</b>

CRCOG will include projects in its TIP that contribute towards the state meeting CTDOT's targets by selecting appropriate CMAQ eligible projects including congestion reduction and traffic flow improvements; ridesharing; transit improvements; travel demand management; and, bicycle and pedestrian facilities.

## Transit

CTDOT's Public Transportation Transit Asset Management Plan (PT-TAMP) and Transit Asset Management Group Plan (Group-TAMP) lay out strategic approaches to maintain and improve transit capital assets, based on careful planning and improved decision-making, such as reviewing inventories and setting performance targets and budgets to achieve State of Good Repair (SGR) goals. CRCOG has lent its support and endorsement to these plans. In accordance with 49 CFR 625.5, SGR is defined by FTA as the condition in which a capital asset is able to operate at a full level of performance. Recipients and sub recipients of FTA funds set annual performance targets for federally established SGR measures. Performance targets are set annually for asset classes for asset categories Rolling Stock, Equipment, Facilities and Guideway Infrastructure. CTDOT has identified asset classes for its transit service providers specific to each of the four assets categories in the three public transportation modes of rail, bus and ferry. CRCOG itself has limited influence over transit operations within its region and thus plays more of a role as an advocate and coordinator for planning efforts.

The percentage of assets beyond the Useful Life Benchmark (ULB) is the performance measure set for both Rolling Stock and Equipment. For Facilities, the performance measure is based on a 5-point condition rating scale derived from FTA's Transit Economic Requirement Model (TERM). The performance measure is the percentage of facilities rated below 3 on the 5-point scale, with a 3 considered to be SGR. The category of facilities has two classes: (1) passenger and parking stations and (2) administrative and maintenance buildings. Under FTA reporting requirements, the guideway

Infrastructure category is specific only to rail and therefore does not apply to CT **fastrak**. The performance measure set by FTA is the % of guideway with a performance restriction which is interpreted as slow zones.

Under the FAST Act and MAP-21, “transit providers are required to submit an annual narrative report to the National Transit Database (NTD) that provides a description of any change in the condition of its transit system from the previous year and describes the progress made during the year to meet the targets previously set for that year.” As of October 2018, performance targets are being reported annually to the NTD by CTDOT and its service operators for the transit system. Transit Asset Management Plans describes strategies for setting targets and progress on the targets. The current Transit Asset Management Performance Targets for each operating entity are as follows:

### **Tier II – Group-TAMP**

**Group Plan Participants:** *Greater Bridgeport Transit Authority, Norwalk Transit District, Housatonic Area Regional Transit, Northwestern CT Transit District, Northeastern CT Transit District, Windham Region Transit District, Southeast Area Transit District, Estuary Transit District, Middletown Area Transit, Milford Transit District, Valley Transit District*

<b>Rolling Stock/ Equipment – Percentage of Vehicles Meeting or Exceeding ULB</b>					
<b>Performance Measure</b>	<b>2019 Target</b>	<b>2019 Performance %</b>	<b>2019 Difference</b>	<b>2020 Target</b>	<b>ULB</b>
<b>Bus</b>	14.00%	18.81%	-4.81%	<b>14.00%</b>	<b>12 years</b>
<b>Cutaway</b>	17.00%	28.51%	-11.51%	<b>17.00%</b>	<b>5 years</b>
<b>Minivan</b>	17.00%	0.00%	17.00%	<b>17.00%</b>	<b>5 years</b>
<b>Sports Utility Vehicle</b>	17.00%	0.00%	17.00%	<b>17.00%</b>	<b>5 years</b>
<b>Van</b>	17.00%	20.00%	-3.00%	<b>17.00%</b>	<b>5 years</b>
<b>Automobiles</b>	17.00%	50.00%	-33.00%	<b>17.00%</b>	<b>5 years</b>
<b>Trucks and other Rubber Tire Vehicles</b>	7.00%	15.38%	-8.38%	<b>7.00%</b>	<b>14 years</b>



<b>Facilities – Percentage of Facilities Rated below 3 on TERM Condition Scale</b>					
<b>Performance Measure</b>	<b>2019 Target</b>	<b>2019 Performance %</b>	<b>2019 Difference</b>	<b>2020 Target</b>	<b>TERM</b>
<b>Passenger / Parking</b>	0.00%	0.00%	0.00%	<b>0.00%</b>	<b>3 or below</b>
<b>Administrative / Maintenance</b>	0.00%	0.00%	0.00%	<b>0.00%</b>	<b>3 or below</b>

**Connecticut Department of Transportation (CTDOT)**

***Full Reporters:*** Arrow, Collins, Shore Line East, Metro North Railroad

<b>Rolling Stock/Equipment - Percentage of Vehicles Meeting or Exceeding ULB</b>					
<b>Performance Measure</b>	<b>2019 Target</b>	<b>2019 Performance %</b>	<b>2019 Difference</b>	<b>2020 Target</b>	<b>ULB</b>
<b>Over the Road Bus</b>	14.00%	0.00%	14.00%	<b>14.00%</b>	<b>12 years</b>
<b>Commuter Rail Locomotive</b>	17.00%	46.67%	-29.67%	<b>17.00%</b>	<b>25 (SLE) /35 (MNR) years</b>
<b>Commuter Rail Passenger Coach</b>	17.00%	25.19%	-8.19%	<b>17.00%</b>	<b>25 (SLE)/ 35 (MNR) years</b>
<b>Commuter Rail Self-Propelled Passenger Car</b>	17.00%	0.00%	17.00%	<b>17.00%</b>	<b>35 years</b>
<b>Steel Wheel Vehicles</b>	0.00%	97.67%	-97.67%	<b>0.00%</b>	<b>5 years</b>

<b>Facilities - Percentage of Facilities Rated below 3 on TERM Condition Scale</b>					
<b>Performance Measure</b>	<b>2019 Target</b>	<b>2019 Performance %</b>	<b>2019 Difference</b>	<b>2020 Target</b>	<b>TERM</b>
<b>Passenger / Parking</b>	0.00%	51.16%	-51.16%	<b>0.00%</b>	<b>3 or below</b>
<b>Administrative / Maintenance</b>	0.00%	0.00%	0.00%	<b>0.00%</b>	<b>3 or below</b>

<b>Infrastructure - Percentage of Track Segments with Performance Restrictions</b>					
<b>Performance Measure</b>	<b>2019 Target</b>	<b>2019 Performance %</b>	<b>2019 Difference</b>	<b>2020 Target</b>	<b>Restrictions</b>
<b>CR – Commuter Rail</b>	2.00%	3.48%	-1.48%	<b>2.00%</b>	<b>% Track Miles under Slow Zones</b>

**CTtransit New Britain – NBT**

<b>Rolling Stock/Equipment - Percentage of Vehicles Meeting or Exceeding ULB</b>					
<b>Performance Measure</b>	<b>2019 Target</b>	<b>2019 Performance %</b>	<b>2019 Difference</b>	<b>2020 Target</b>	<b>ULB</b>
<b>Bus</b>	14.00%	17.02%	-3.02%	<b>14.00%</b>	<b>12 years</b>
<b>Cutaway</b>	17.00%	32.16%	-15.16%	<b>17.00%</b>	<b>5 years</b>
<b>Minivan</b>	17.00%	0.00%	17.00%	<b>17.00%</b>	<b>5 years</b>
<b>Sports Utility Vehicle</b>	17.00%	0.00%	17.00%	<b>17.00%</b>	<b>5 years</b>
<b>Van</b>	17.00%	9.09%	7.91%	<b>17.00%</b>	<b>5 years</b>
<b>Automobiles</b>	17.00%	53.85%	-36.85%	<b>17.00%</b>	<b>5 years</b>
<b>Trucks and other Rubber Tire Vehicles</b>	7.00%	20.59%	-13.59%	<b>7.00%</b>	<b>14 years</b>

<b>Facilities - Percentage of Facilities Rated below 3 on TERM Condition Scale</b>					
<b>Performance Measure</b>	<b>2019 Target</b>	<b>2019 Performance %</b>	<b>2019 Difference</b>	<b>2020 Target</b>	<b>TERM</b>
<b>Passenger / Parking</b>	0.00%	0.00%	0.00%	<b>0.00%</b>	<b>3 or below</b>
<b>Administrative / Maintenance</b>	0.00%	0.00%	0.00%	<b>0.00%</b>	<b>3 or below</b>

**CTtransit New Britain – DATTCO**

<b>Rolling Stock/Equipment - Percentage of Vehicles Meeting or Exceeding ULB</b>					
<b>Performance Measure</b>	<b>2019 Target</b>	<b>2019 Performance %</b>	<b>2019 Difference</b>	<b>2020 Target</b>	<b>ULB</b>
<b>Over the Road Bus</b>	14.00%	0.00%	14.00%	<b>14.00%</b>	<b>12 Years</b>
<b>Bus</b>	14.00%	0.00%	14.00%	<b>14.00%</b>	<b>12 Years</b>

**CTtransit Hartford**

<b>Rolling Stock/Equipment - Percentage of Vehicles Meeting or Exceeding ULB</b>					
<b>Performance Measure</b>	<b>2019 Target</b>	<b>2019 Performance %</b>	<b>2019 Difference</b>	<b>2020 Target</b>	<b>ULB</b>
<b>Articulated Bus</b>	14.00%	0.00%	14.00%	<b>14.00%</b>	<b>12 Years</b>
<b>Over the Road Bus</b>	14.00%	0.00%	14.00%	<b>14.00%</b>	<b>12 Years</b>
<b>Bus</b>	14.00%	18.07%	-4.07%	<b>14.00%</b>	<b>12 Years</b>
<b>Automobiles</b>	17.00%	28.57%	-11.57%	<b>17.00%</b>	<b>5 Years</b>
<b>Trucks and other Rubber Tire Vehicles</b>	7.00%	13.33%	-6.33%	<b>7.00%</b>	<b>14 Years</b>

<b>Facilities - Percentage of Facilities Rated below 3 on TERM Condition Scale</b>					
<b>Performance Measure</b>	<b>2019 Target</b>	<b>2019 Performance %</b>	<b>2019 Difference</b>	<b>2020 Target</b>	<b>TERM</b>
<b>Passenger / Parking</b>	0.00%	0.00%	0.00%	<b>0.00%</b>	<b>3 or below</b>
<b>Administrative / Maintenance</b>	0.00%	0.00%	0.00%	<b>0.00%</b>	<b>3 or below</b>

**Greater Hartford Transit District (GHTD)**

<b>Rolling Stock/Equipment - Percentage of Vehicles Meeting or Exceeding ULB</b>					
<b>Performance Measure</b>	<b>2019 Target</b>	<b>2019 Performance %</b>	<b>2019 Difference</b>	<b>2020 Target</b>	<b>ULB</b>
<b>Cutaway</b>	17.00%	8.92%	8.08%	<b>17.00%</b>	<b>5 years</b>
<b>Automobiles</b>	20.00%	50.00%	-30.00%	<b>20.00%</b>	<b>5 years</b>
<b>Trucks and other Rubber Tire Vehicles</b>	7.00%	25.00%	-18.00%	<b>7.00%</b>	<b>14 years</b>

<b>Facilities - Percentage of Facilities Rated below 3 on TERM Condition Scale</b>					
<b>Performance Measure</b>	<b>2019 Target</b>	<b>2019 Performance %</b>	<b>2019 Difference</b>	<b>2020 Target</b>	<b>TERM</b>
<b>Administrative / Maintenance</b>	0.00%	0.00%	0.00%	<b>0.00%</b>	<b>3 or below</b>

CTDOT's STIP and CROG's TIP will program projects to meet the targets utilizing the list of capital prioritized projects, based on projected asset conditions, included in CTDOT's PT-TAMP and Group-TAMP that were shared with the MPOs in October 2018. This list of projects will be updated every four years along with the Plans. These prioritized projects will be developed with the aid of CTDOT's Transit Asset Prioritization Tool, better known as TAPT. CROG will support and advocate for these efforts.