

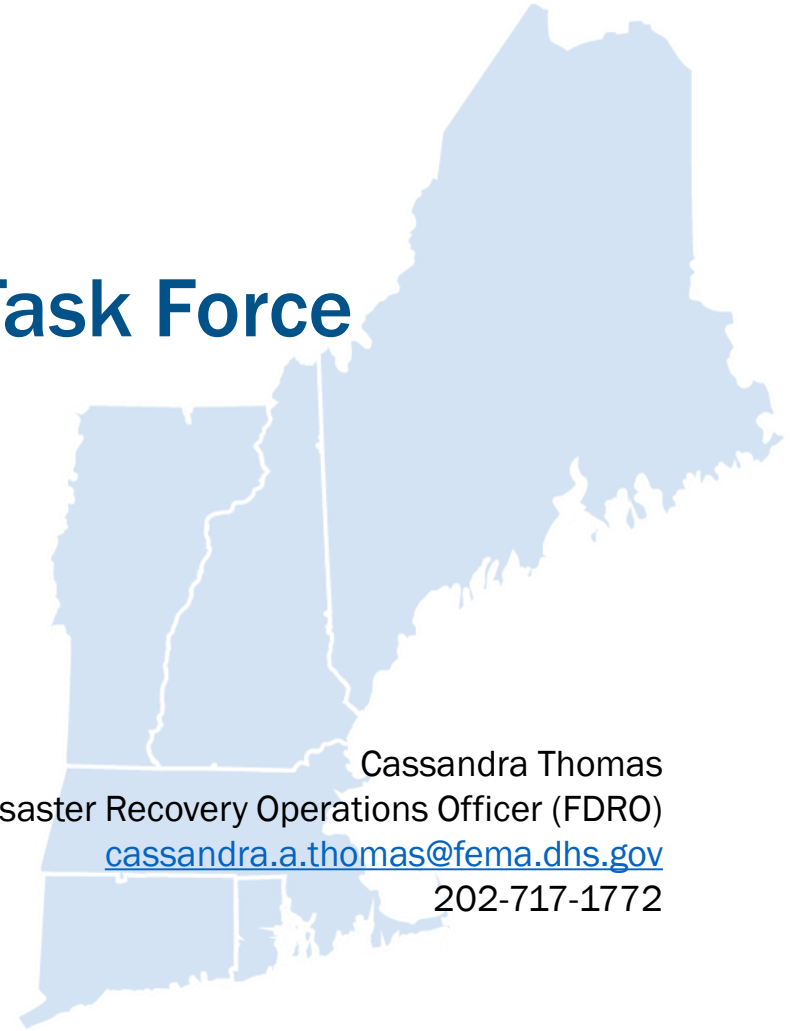
Region 1 COVID-19 Long-Term Recovery Task Force

Briefing to Connecticut Leadership Group
July 26, 2021



FEMA

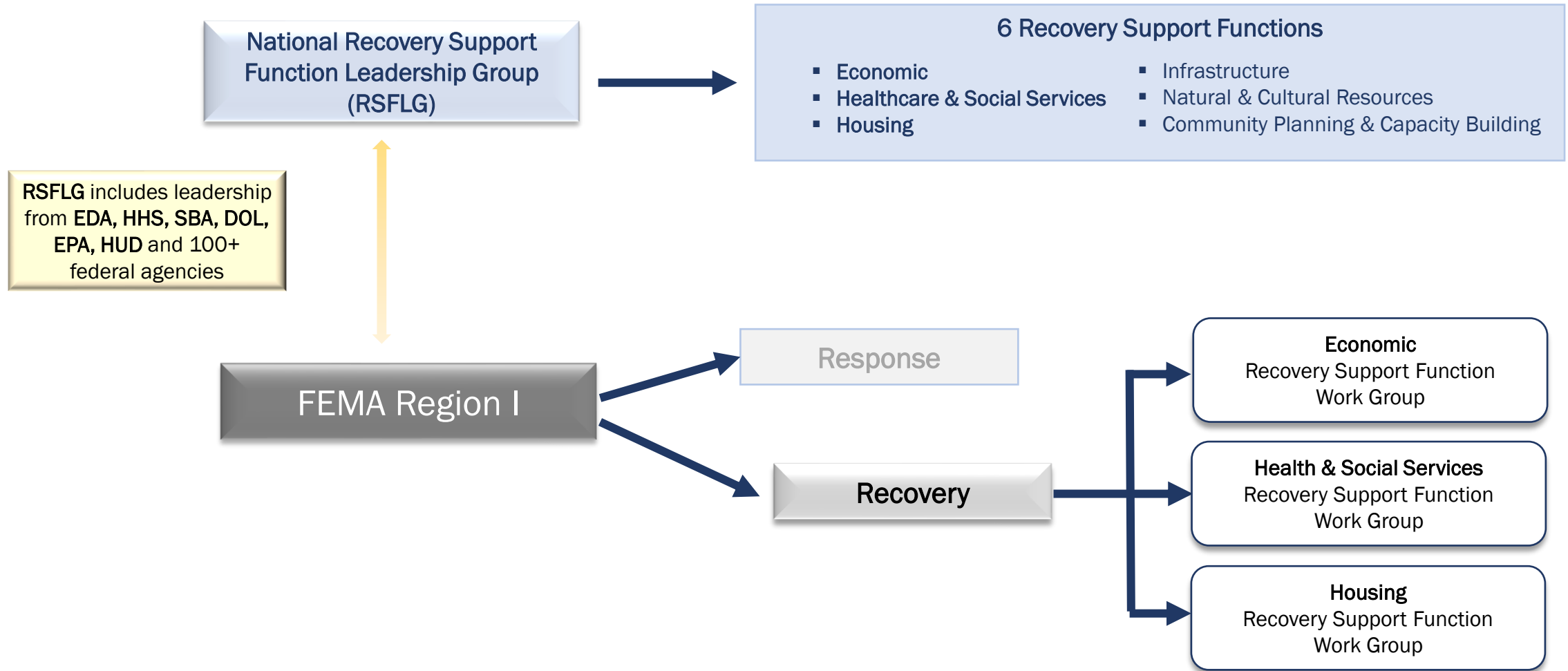
Cassandra Thomas
Federal Disaster Recovery Operations Officer (FDRO)
cassandra.a.thomas@fema.dhs.gov
202-717-1772





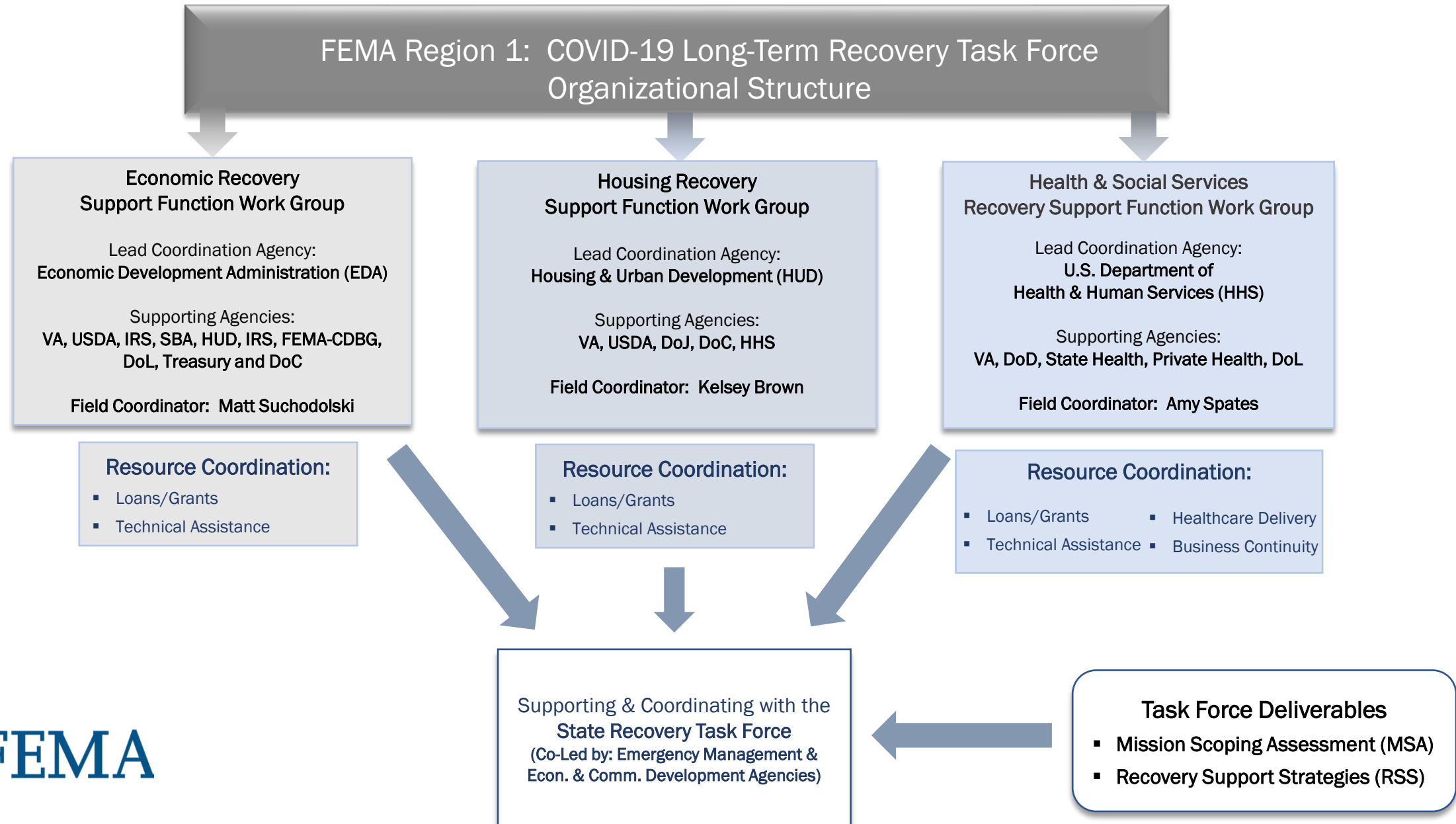
FEMA Region 1 COVID-19 Long-Term Recovery Task Force Organizational Overview

FEMA COVID-19 Region 1 Recovery National Structure



FEMA

FEMA COVID-19 Long-Term Recovery Regional Structure



FEMA COVID-19 Long-Term Recovery Task Force: Deliverables

Rapid Needs Assessment:

FEMA Region I has engaged the **Global Resilience Institute (GRI) at Northeastern University** for expertise and capacity to conduct Rapid Needs Assessments throughout the region.

GRI Rapid Needs Assessment Snapshot:

- 18 communities across 6 states
- Focus on impacted industries:
 - Tourism
 - Healthcare
 - Agriculture
 - Education
 - Housing
 - Higher Education
 - Gig Economy
 - Hospitality and Restaurants
 - Retail
 - Manufacturing
 - Food Supply Chains
 - Arts & Culture
- Interview public officials, and business and community leaders
- Apply proprietary I-RES principles in assessing qualitative and quantitative data



Mission Scoping Assessment (MSA):

A summary of findings and issues related to the three Federal Recovery Support Functions (RSFs)

- Economic (EDA)
- Health and Social Services (HSS)
- Housing (HUD)



Statewide and Regional Recovery Steering Committees:

Work Groups comprised of Subject Matter Experts and stakeholders from:

- Federal Agency Partners
- State and local agencies/organizations
- non-governmental organizations (Connecticut Voluntary Organizations Active in Disaster)



Recovery Support Strategies (RSS):

Recovery Support Strategies outline priorities for support and funding across states and tribes in the region.



FEMA



Solution Based Team Strategy

the concept of SBTs will be established through the work of the RSFs

Defining ESFs and RSFs vs. Solution Based Teams

Emergency Support Function (ESF)

- ESFs provide the structure for coordinating Federal interagency support for a Federal response to an incident.

15 ESFs

1. Transportation
2. Communications
3. Public Works & Engineering
4. Firefighting
5. Emergency Management
6. **Mass Care, Emergency Assistance, Housing & Human Services**
7. Logistics Mgmt. & Resource Support
8. Public Health & Medical Services
9. Search & Rescue
10. Oil & Hazardous Materials Response
11. Agriculture & Natural Resources
12. Energy
13. Public Safety & Security
14. ~~Long Term Community Recovery~~
Cross-Sector Business and Infrastructure
15. External Affairs

Recovery Support Function (RSF):

RSFs are six groupings of agency/organization representatives with similar or overlapping resources and/or expertise.

Each RSF is responsible for the core capability targets within their area of support.

More information found within the [Connecticut Disaster Recovery Framework and ESF #14](#)

6 RSFs:

1. Community Planning & Capacity Building
2. Economic
3. Health & Social Services
4. Housing
5. Infrastructure Systems
6. Natural & Cultural Resources

Solutions-Based Teams:

the concept of SBTs will be established through the work of the RESF-14 groups

Sector-based Work Groups comprised of Subject Matter Experts and stakeholders including:

Federal Agency Partners, State and local governments; and Academia, Private and Non-Profit Organizations

Examples of Solutions-Based Teams:

1. Childcare
2. Forestry
3. Fisheries/Aquaculture
4. Tourism/Hospitality
5. Higher Education
6. Healthcare Systems
7. Manufacturing

FEMA recognizes ESF-14 as Cross-Sector Business and Infrastructure

Connecticut recognizes ESF-14 as Long-Term Community Recovery



FEMA

COVID-19 Recovery Task Force: Solution Based Teams Activities

- Gaps discussed by ESF-14
- Projects identified
- Desired Outcomes agreed upon
- Resources Coordinated
- Measure of success documented
 - Outcomes and outputs tracked by LTR team
 - MaxTrax dashboard – CT has access to this tool
 - RSS document created; will include indicators to be tracked



FEMA

A Critical Distinction



OUTPUTS

MEASURE ACTIVITY: Action we will take to achieve outcomes
EXAMPLE: Awarding a grant for local officials to conduct economic recovery planning

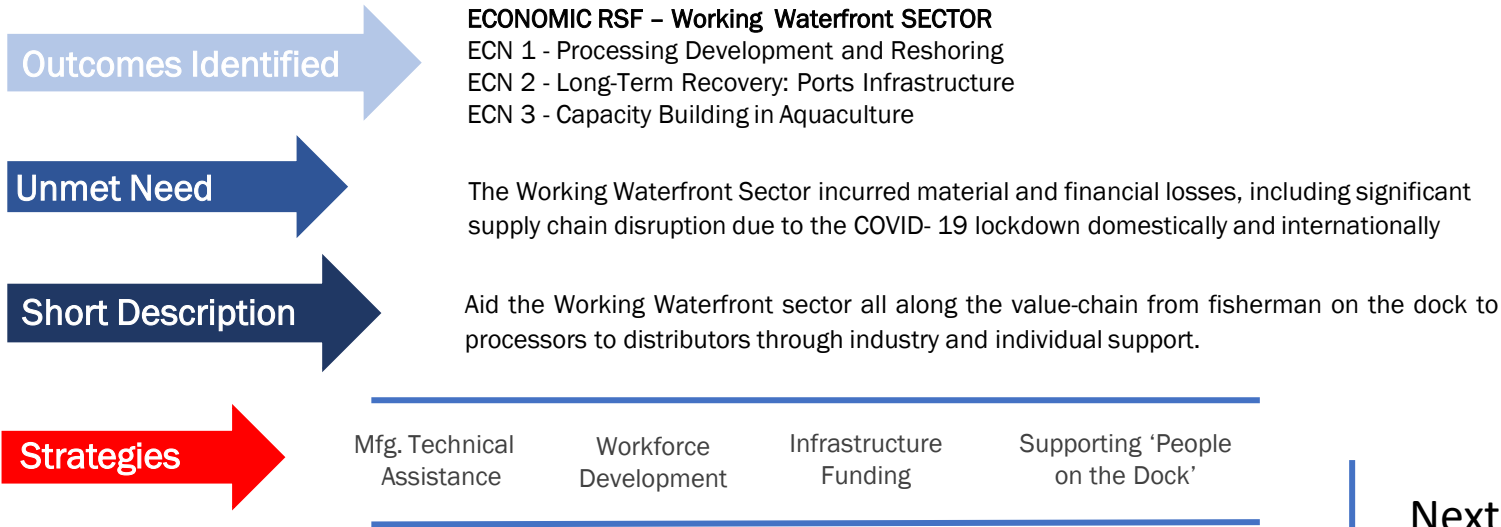


VS. OUTCOMES

MEASURE CHANGE: What we hope our work will achieve
EXAMPLE: Increased capability of local officials to implement economic recovery planning

An Example of an Outcome-Driven, Solution Based Team Strategy

Economic Recovery Support Function (RSF)

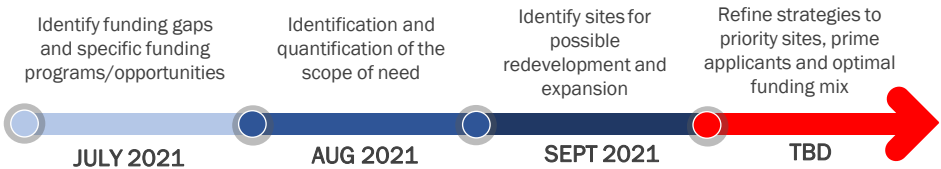


Strategies will form the Recovery Support Strategy (RSS) document, all tracked in Max-Trax by the FEMA team; and program evaluation and decision support framework will be provided.

ECN 1: Processing Development and Reshoring

- China’s share of processing is over 35% of world production with the rest of Asia at 24%. The Americas' share clocks in at 14% for March 2020 (FAO, 2020 State of Fishing and Aquaculture - Note: March 2020 Pre-Covid-19 numbers).
- Processing supply-chain disrupted by Covid-19 shutdown and fall in demand for seafood at restaurant and other hospitality establishments. Opportunity exists to expand capacity.

Next Steps:



Possible Collaborations

Federal Reserve Bank of Boston. Federal agencies & laboratories, Manufacturing USA Institutes, Trade associations and University Technology Commercialization programs



FEMA

Other Examples of an Outcome-Driven, Solution Based Team Strategy

ECN 2: Long-Term Recovery : Ports Infrastructure

- New London's existing stone and wooden piers are currently in a poor state of repair and need modernization to stay competitive
- Ports also need to be expanded with typical services including water, electricity, and sewage as well as equipment upgrades such as ice-machines, storage, and refrigeration
- Constructing a permanent facility for a seasonal market can provide an opportunity for seasonal vendors
- Climate change is threatening port infrastructure; hence threatening sector's competitiveness as well
- Repurposing of university building for Incubator and Training Center

Possible Collaborations:

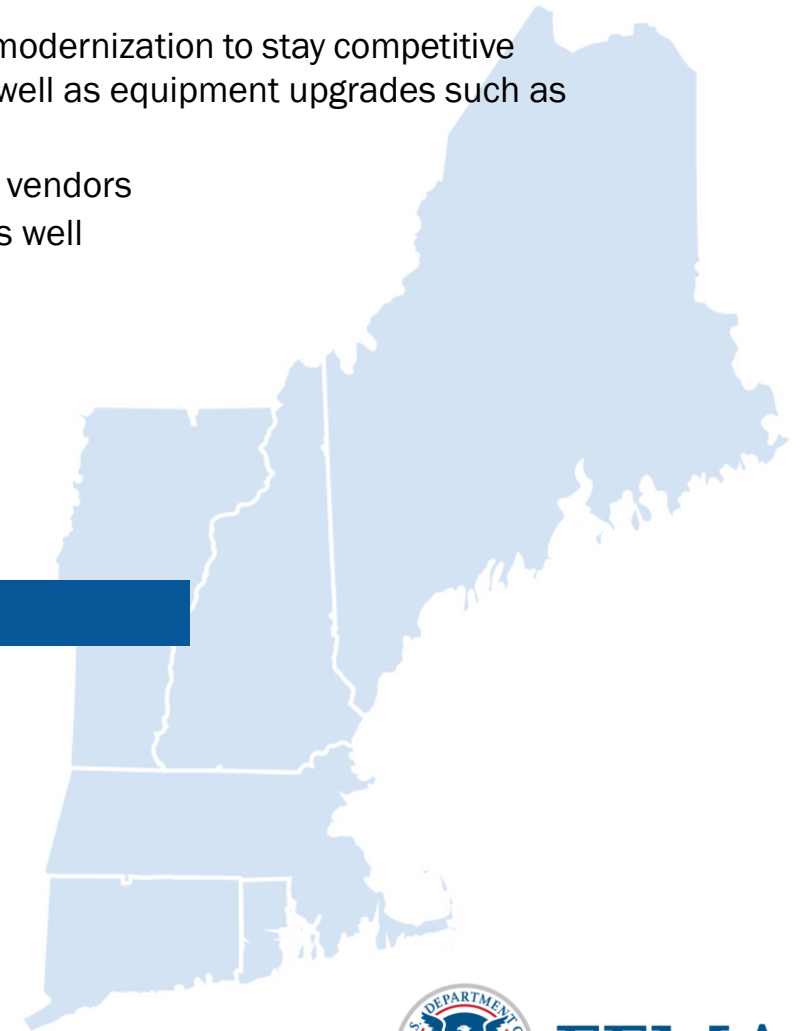
- DOE funding for clean energy
- DOT MARAD and NOAA grants
- Anystate Port Authorities
- EDA funding for port modernization if jobs added
- USDA Rural Development
- EPA Smart Sector program

ECN 3: Capacity Building (Workforce Development) In Aquaculture

- Need workforce trained in 21st century Aquaculture techniques
 - Fund and develop programs at local community college and universities
- Develop disaster preparedness plans; support emergency assistance and rehabilitation
- Training on selective fishing gear, bycatch reduction and sustainable fishing methods

Possible Collaborations:

- Funding to cover sector specific programs at University sectors and other parts of Aquaculture
- State Funding
- DOI funds conservation training
- USAID knowledge exchange
- University programs

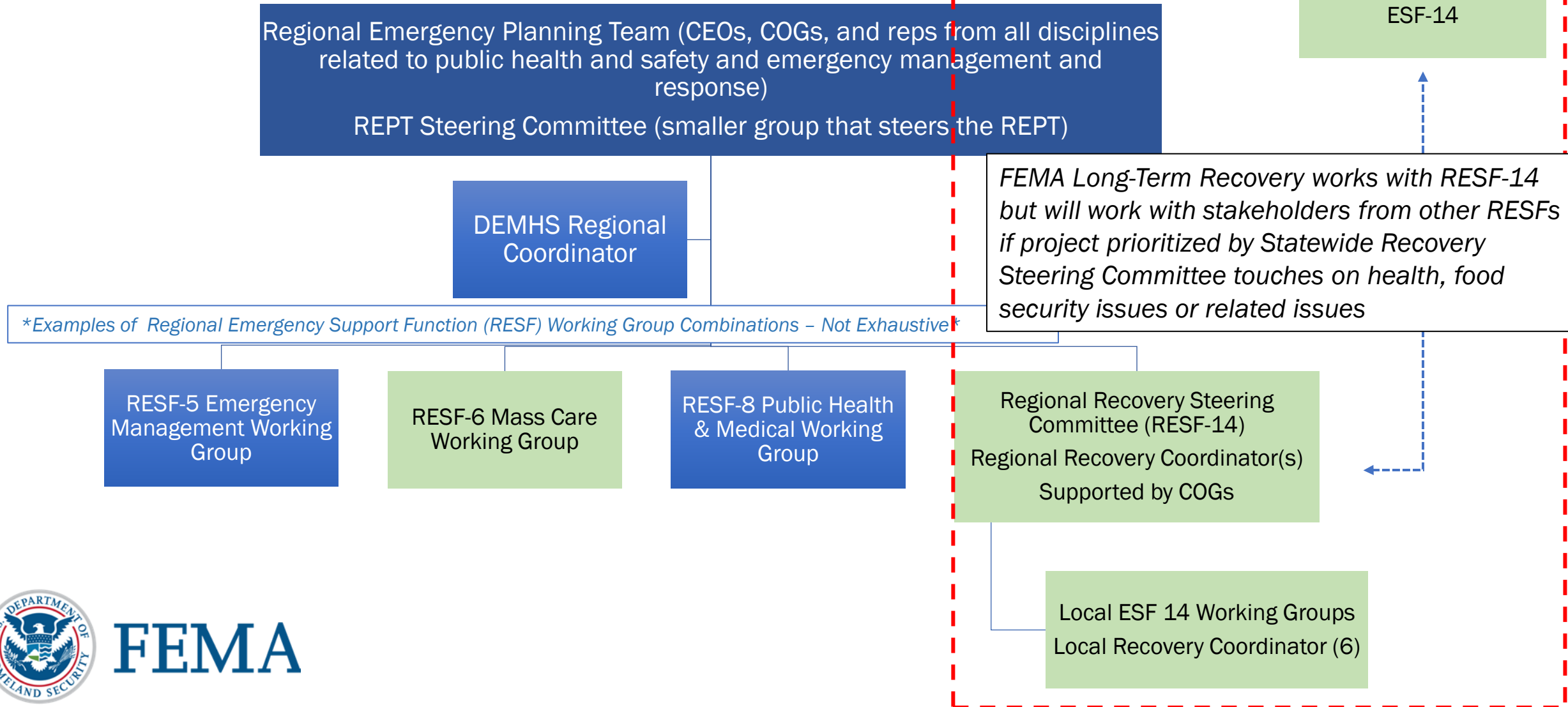


FEMA

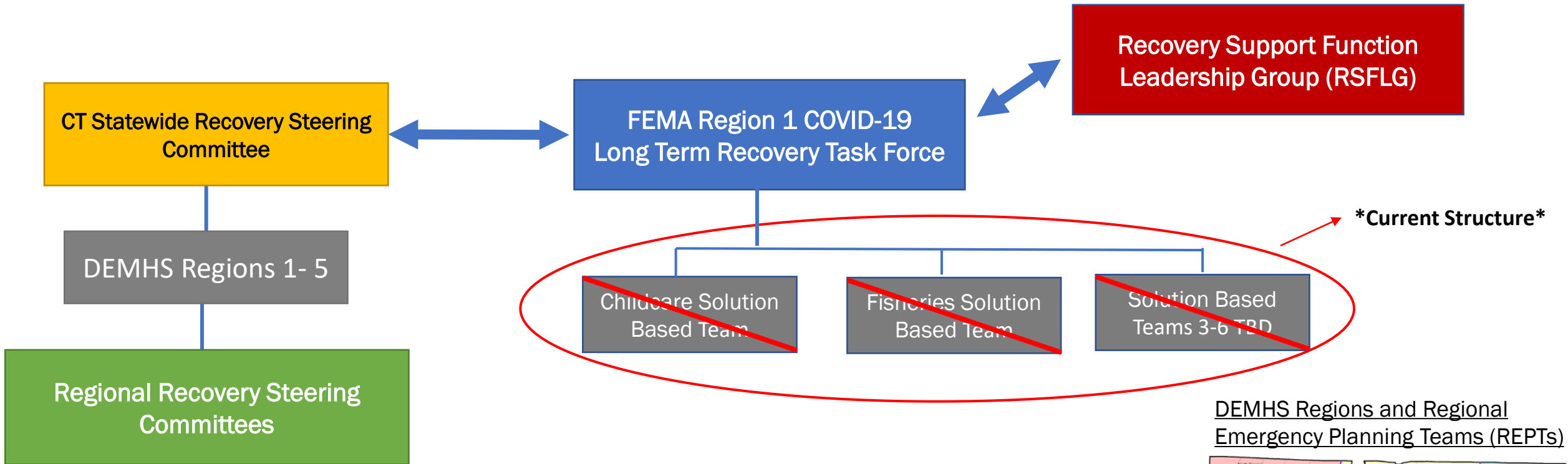
A nighttime photograph of the Hartford, Connecticut skyline. The Connecticut River flows in the foreground, reflecting the city lights. A large bridge with multiple arches spans the river on the right. In the background, several skyscrapers are visible, including the prominent, illuminated Connecticut State Capitol building. The sky is dark with some clouds.

State of Connecticut Proposed Long-Term Recovery Structure

5 DEMHS Regions — Each Region has a Regional Emergency Planning Teams (REPT)



State of Connecticut ESF-14 Long-Term Recovery Structure: Current



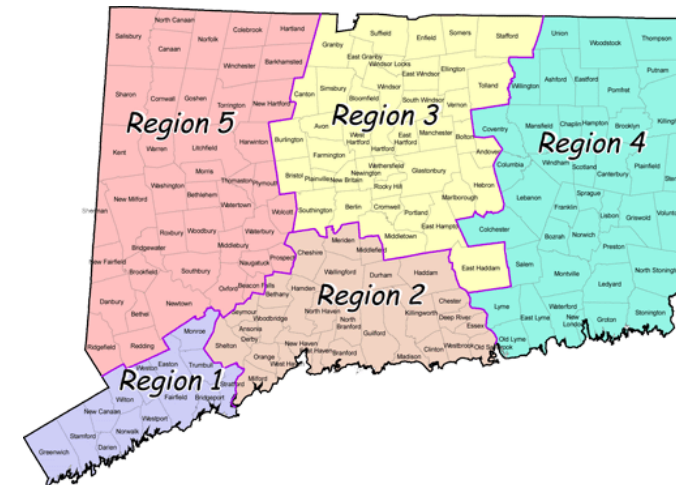
Recovery Functions:

- Coordinates with 108 Federal Agencies
- Sector-Based Recovery with Solution Based Teams
- Long-Term Resilience Building



FEMA

DEMHS Regions and Regional Emergency Planning Teams (REPTs)



Long-Term Recovery: Concept of Operations Plan

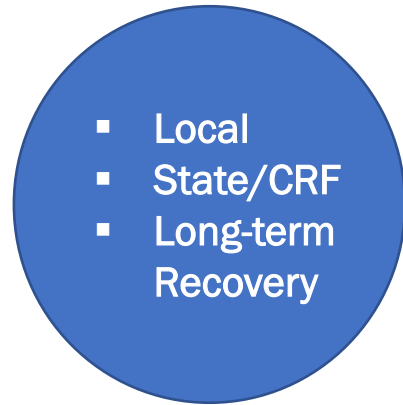
CT ESF-14 DEMHS and Regional Steering Committees:
Identify Disaster-Related Needs/Priorities



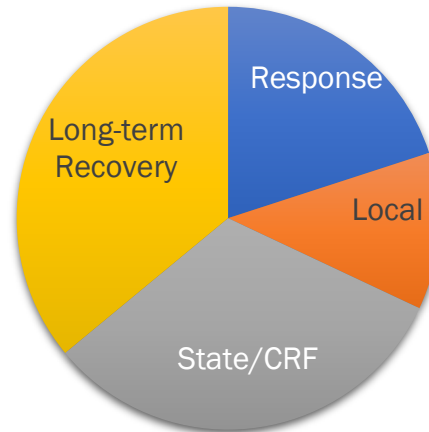
Statewide Steering Committee:
Establishes Priorities;
Identifies Urgent Gaps



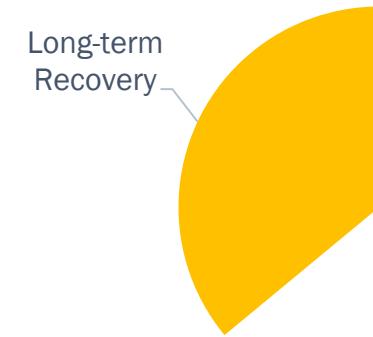
State and FEMA Region 1 LTR:
collaborate to identify funding and tactics to fill gaps and support strategies for LTR priorities



NOTE: Economic, HSS and Housing issues are identified at the regional level



■ Response ■ Local ■ State/CRF ■ Long-term Recovery



■ Long-term Recovery



FEMA

State of Connecticut Project Prioritization Schedule

Projects/Unmet Needs	Deadlines	Assigned To:	Deliver To:
Project Overviews	No Later Than <i>October 7th</i>	Statewide/Regional Steering Committees	DECD/OTG
Project Prioritization List	TBD	DECD/OTG	FEMA

Key Contacts

Federal Disaster Recovery Coordinator (FDRC):

Jim McPherson, james.mcpherson@fema.dhs.gov, 857-205-3482

Deputy Federal Disaster Recovery Coordinator (DFDRC):

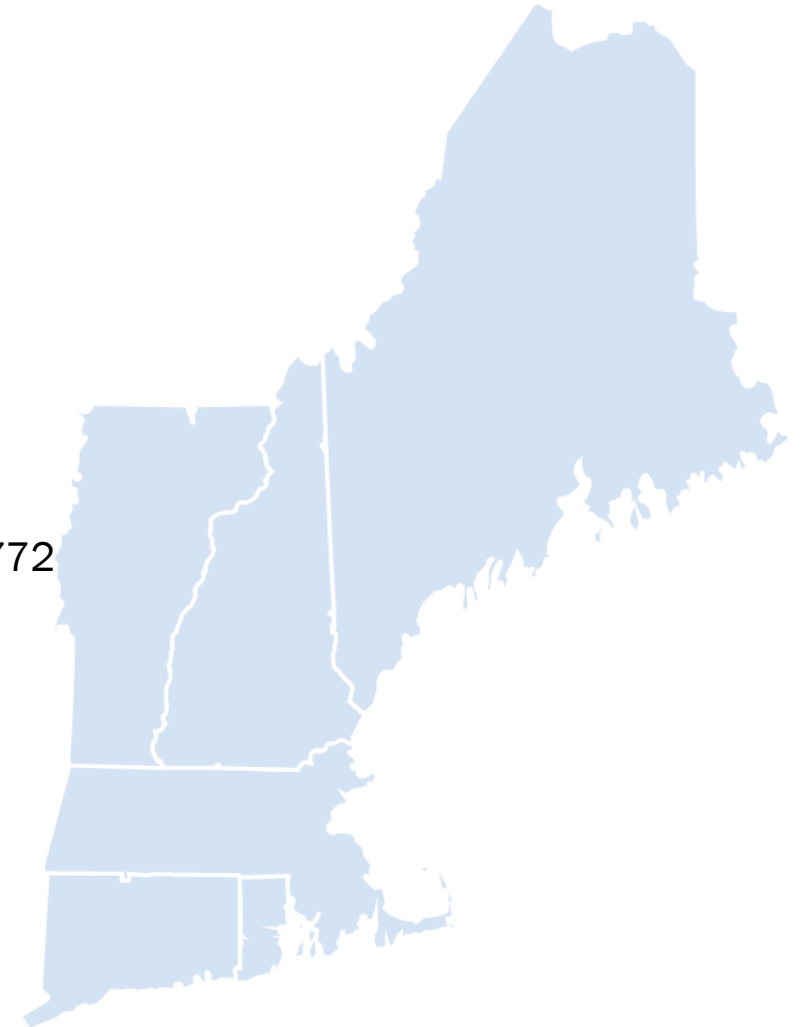
Bob Fogel, robert.fogel@fema.dhs.gov, 617-671-9750

Federal Disaster Recovery Operations Officer (FDRO):

Cassandra Thomas, cassandra.a.thomas@fema.dhs.gov, 202-717-1772

Connecticut Liaison:

Madison Ovadek, madison.ovadek@fema.dhs.gov, 603-343-8095



FEMA



Questions?