

Active Living & Active Transportation Advisory Committee

May 26, 2022



Agenda

Public Comment

Introductions

Minutes

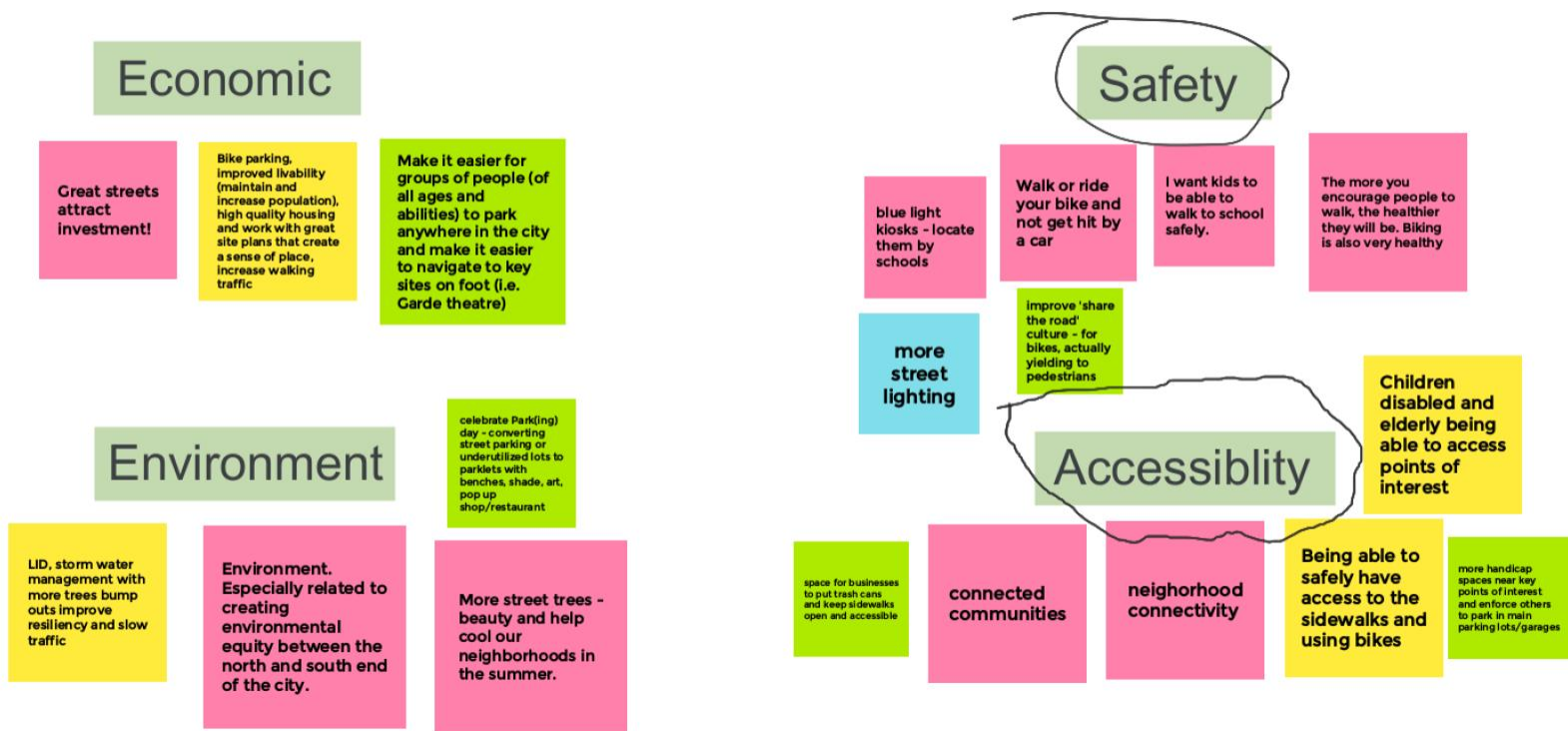
Year 4 Update

Year 5 Plan

Questions/Comments

Year 4 Update

What are your Complete Streets priorities in New London? Why?



New London Complete Streets Workshops

Held two workshops: one with staff; one with the public

Helping the city to gain input on a planned complete streets policy

Groton Intersection Improvements

Temporary improvements centered on Bridge Street and North Street

Public workshop held April 19

Planned install TBD



Meriden Parklet

Parklet design, implementation,
and activation plan.

Plaza in front of the downtown
Meriden train station

KEY:

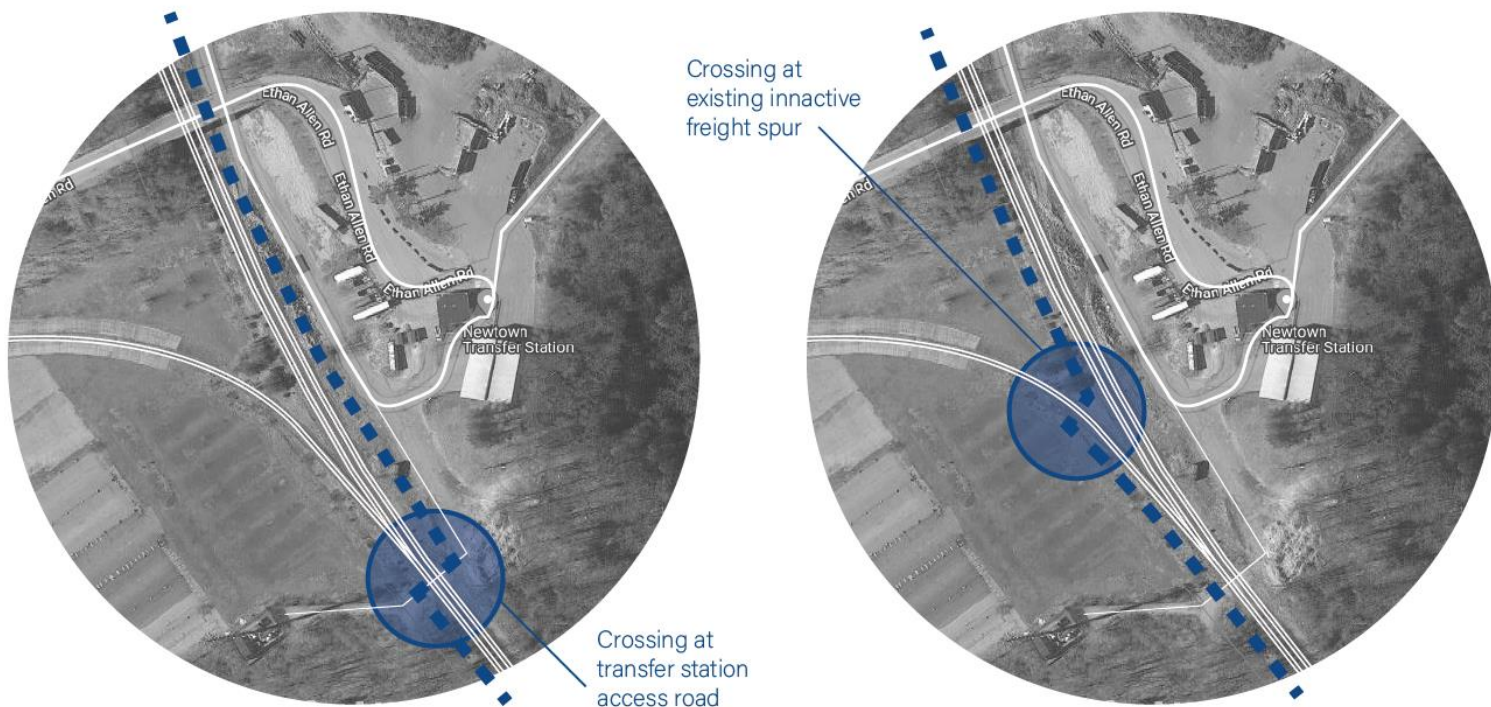
- 1 ART MURAL
- 2 CURB EXTENSION ART
- 3 PLANTER
- 4 BARREL
- 5 GRASS
- 6 GRAVEL
- 7 FOOD TRUCK
- 8 TENT
- 9 STAGE
- 10 BISTRO SET

BREWERY ACTIVATION AXON



Ethan Allen

The proposed trail has to cross the freight line at some location, and the options below show how that crossing could be negotiated.



Newtown Trail Plan

Routing plan for the extension of the Housatonic Trail into Newtown

Developing an overall routing plan and more detailed concepts for three locations along the trail



Thompson Walking School Bus

Pilot project to develop a walking school bus program in Thompson

Coincided with “Walk to School Day”



- New London
- New Milford
- South Windsor
- West Hartford

- New London
- New Milford
- South Windsor
- West Hartford



Train the Trainer

Workshop focused on fourth grade education

- Trains teachers in bike safety curriculum
- Goal is to have the curriculum implemented at the schools
- Each school also received two bike racks from the grant
- Schools include: Canton, Cheshire, and Portland



New Haven Bus Platform

Portable, temporary bus platform

Allows for ADA-compliant pickups without buses having to leave the travel lane

Modular and can accommodate bike lanes

Year 5 Plan

Targeted Outreach

Initial Conversations

Bridgeport

Windham

CTDOT

Additional Possibilities

Statewide trainings

Additional municipalities



Questions?