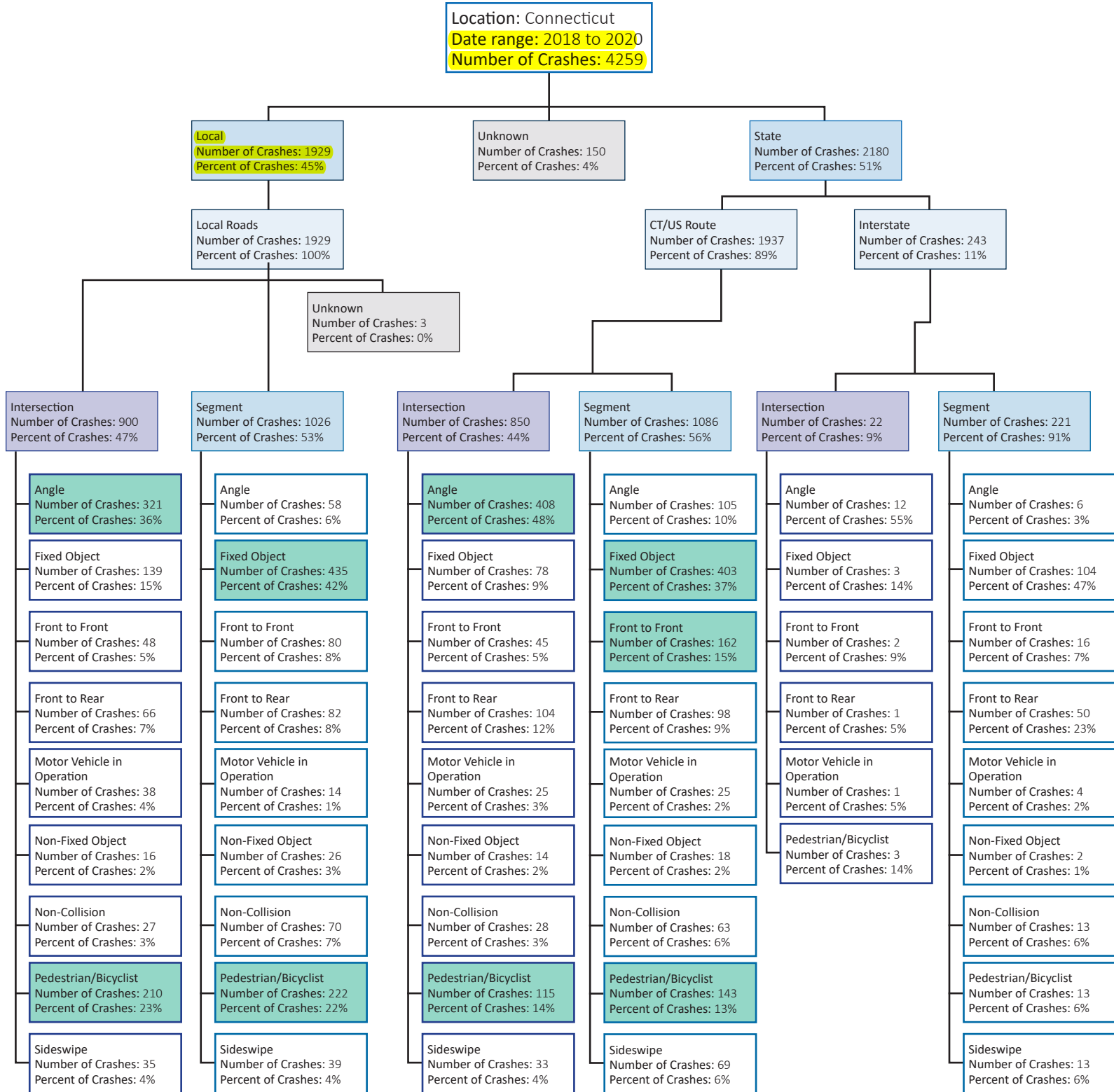


# Connecticut Fatal and Serious Injury Crash Tree



# CRCOG Crash Tree

Location: CRCOG  
Date range: 2018 to 2020  
Number of Crashes: 1140

**Municipal**  
Number of Crashes: 563  
Percent of Crashes: 49%

**State**  
Number of Crashes: 538  
Percent of Crashes: 47%

**Unknown**  
Number of Crashes: 39  
Percent of Crashes: 3%

**Municipal Road**  
Number of Crashes: 563  
Percent of Crashes: 100%  
Percent of All Crashes: 49%

**Unknown:**  
1

**CT/US Route**  
Number of Crashes: 464  
Percent of Crashes: 86%  
Percent of All Crashes: 41%

**Unknown:**  
1

**Interstate**  
Number of Crashes: 74  
Percent of Crashes: 14%  
Percent of All Crashes: 7%

**Intersection**  
Number of Crashes: 283  
Percent of Crashes: 50%

**Segment**  
Number of Crashes: 279  
Percent of Crashes: 50%

**Intersection**  
Number of Crashes: 204  
Percent of Crashes: 44%

**Segment**  
Number of Crashes: 259  
Percent of Crashes: 56%

**Intersection**  
Number of Crashes: 6  
Percent of Crashes: 8%

**Segment**  
Number of Crashes: 68  
Percent of Crashes: 92%

**Angle**  
Number of Crashes: 114  
Percent of Crashes: 40%

**Fixed Object**  
Number of Crashes: 42  
Percent of Crashes: 15%

**Front to Front**  
Number of Crashes: 15  
Percent of Crashes: 5%

**Front to Rear**  
Number of Crashes: 11  
Percent of Crashes: 4%

**Motor Veh. in Operation**  
Number of Crashes: 7  
Percent of Crashes: 2%

**Non-Collision**  
Number of Crashes: 6  
Percent of Crashes: 2%

**Pedestrian/Bicyclist**  
Number of Crashes: 76  
Percent of Crashes: 27%

**Sideswipe**  
Number of Crashes: 12  
Percent of Crashes: 4%

**Angle**  
Number of Crashes: 17  
Percent of Crashes: 6%

**Fixed Object**  
Number of Crashes: 123  
Percent of Crashes: 44%

**Front to Front**  
Number of Crashes: 13  
Percent of Crashes: 5%

**Front to Rear**  
Number of Crashes: 22  
Percent of Crashes: 8%

**Motor Veh. in Operation**  
Number of Crashes: 3  
Percent of Crashes: 1%

**Non-Fixed Object**  
Number of Crashes: 4  
Percent of Crashes: 1%

**Non-Collision**  
Number of Crashes: 15  
Percent of Crashes: 5%

**Pedestrian/Bicyclist**  
Number of Crashes: 68  
Percent of Crashes: 24%

**Sideswipe**  
Number of Crashes: 2  
Percent of Crashes: 50%

**Angle**  
Number of Crashes: 107  
Percent of Crashes: 52%

**Fixed Object**  
Number of Crashes: 18  
Percent of Crashes: 9%

**Front to Front**  
Number of Crashes: 9  
Percent of Crashes: 4%

**Front to Rear**  
Number of Crashes: 25  
Percent of Crashes: 12%

**Motor Veh. in Operation**  
Number of Crashes: 6  
Percent of Crashes: 3%

**Non-Fixed Object**  
Number of Crashes: 2  
Percent of Crashes: 1%

**Non-Collision**  
Number of Crashes: 8  
Percent of Crashes: 4%

**Pedestrian/Bicyclist**  
Number of Crashes: 23  
Percent of Crashes: 11%

**Sideswipe**  
Number of Crashes: 6  
Percent of Crashes: 3%

**Angle**  
Number of Crashes: 25  
Percent of Crashes: 10%

**Fixed Object**  
Number of Crashes: 110  
Percent of Crashes: 42%

**Front to Front**  
Number of Crashes: 29  
Percent of Crashes: 11%

**Front to Rear**  
Number of Crashes: 22  
Percent of Crashes: 8%

**Motor Veh. in Operation**  
Number of Crashes: 4  
Percent of Crashes: 2%

**Non-Fixed Object**  
Number of Crashes: 6  
Percent of Crashes: 2%

**Non-Collision**  
Number of Crashes: 9  
Percent of Crashes: 3%

**Pedestrian/Bicyclist**  
Number of Crashes: 32  
Percent of Crashes: 12%

**Sideswipe**  
Number of Crashes: 22  
Percent of Crashes: 8%

**Angle**  
Number of Crashes: 2  
Percent of Crashes: 33%

**Front to Front**  
Number of Crashes: 1  
Percent of Crashes: 17%

**Front to Rear**  
Number of Crashes: 1  
Percent of Crashes: 17%

**Pedestrian/Bicyclist**  
Number of Crashes: 2  
Percent of Crashes: 33%

**Angle**  
Number of Crashes: 3  
Percent of Crashes: 4%

**Fixed Object**  
Number of Crashes: 32  
Percent of Crashes: 47%

**Front to Front**  
Number of Crashes: 6  
Percent of Crashes: 9%

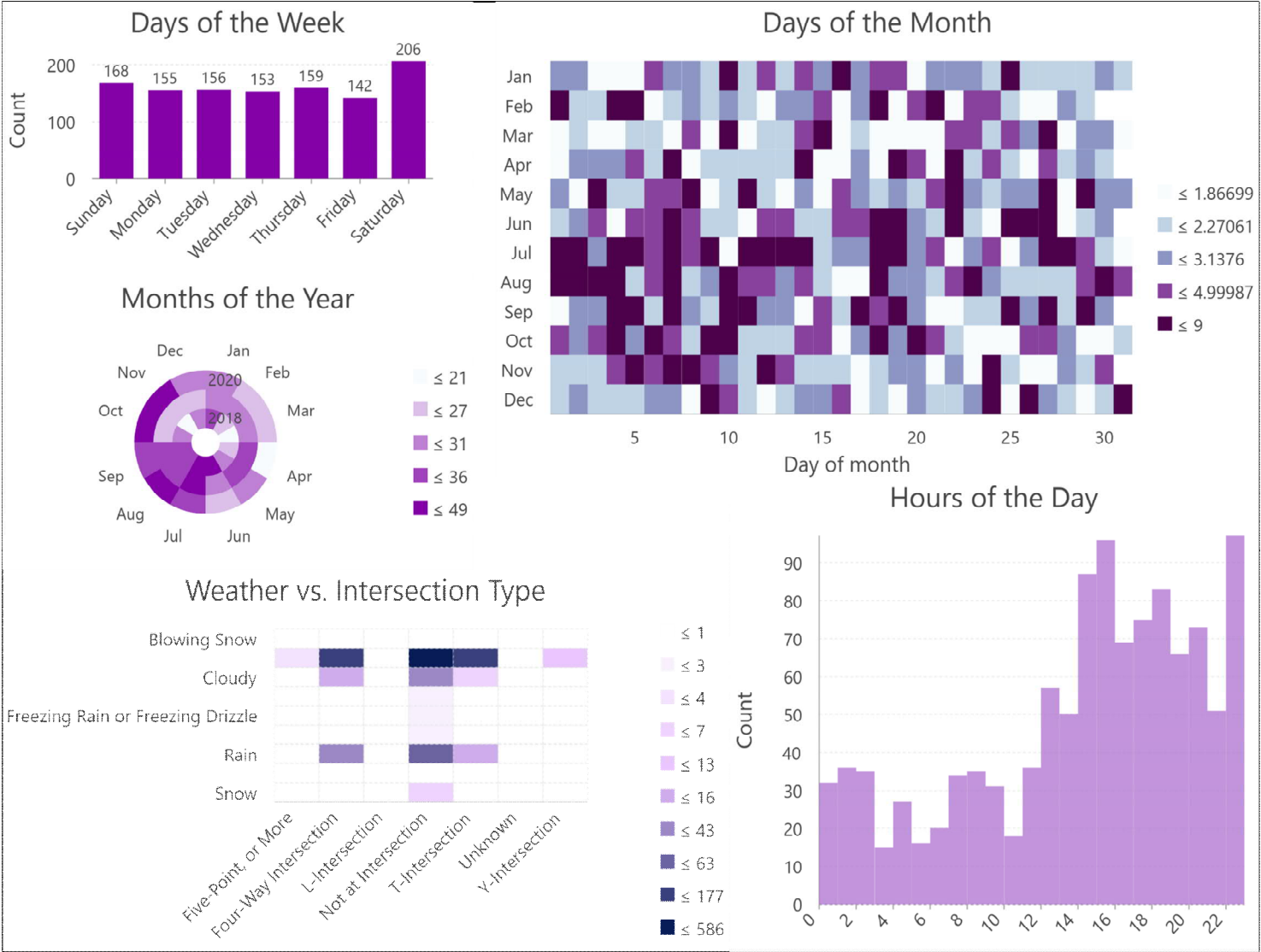
**Front to Rear**  
Number of Crashes: 15  
Percent of Crashes: 22%

**Non-Collision**  
Number of Crashes: 4  
Percent of Crashes: 6%

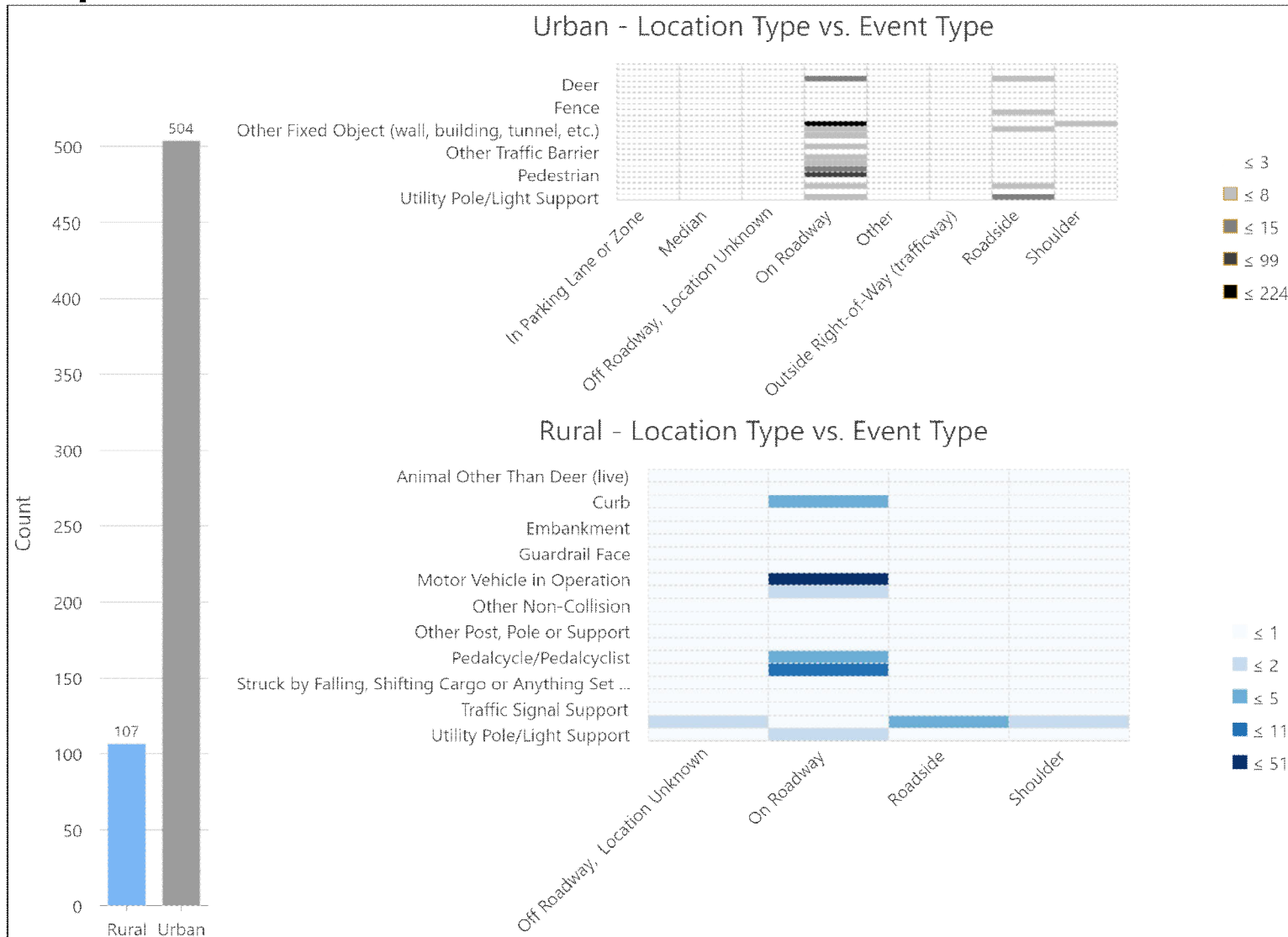
**Pedestrian/Bicyclist**  
Number of Crashes: 2  
Percent of Crashes: 3%

**Sideswipe**  
Number of Crashes: 6  
Percent of Crashes: 9%

# Capitol Time & Conditions



# Capitol Rural vs. Urban



# Capitol State vs. Municipal Road

