

Update on COVID Recovery Planning

October 30, 2020



Connecticut
Voluntary Organizations
Active in Disaster

Agenda

1. Overview of CT Response and Recovery Framework (*Slides 1-11*)
2. CT COVID Recovery—Overview (*Slides 12-15*)
3. Short Term Recovery—Individual Unmet Needs (*Slides 16-32*)
 - Local
 - Regional
 - Statewide
 - Example of Regional Coordination Flow
4. Long Term Recovery--Economic /Community Planning and Capacity Building (*Slides 33-43*)
 - Long Term Recovery Overview and Workflow
 - Role of GRI/McChrystal, COGs, RRSCs—Phase 1
 - Proposed Phase 2/EDA Application
 - FEMA Role in Long Term Recovery

Response and Recovery are Team Efforts

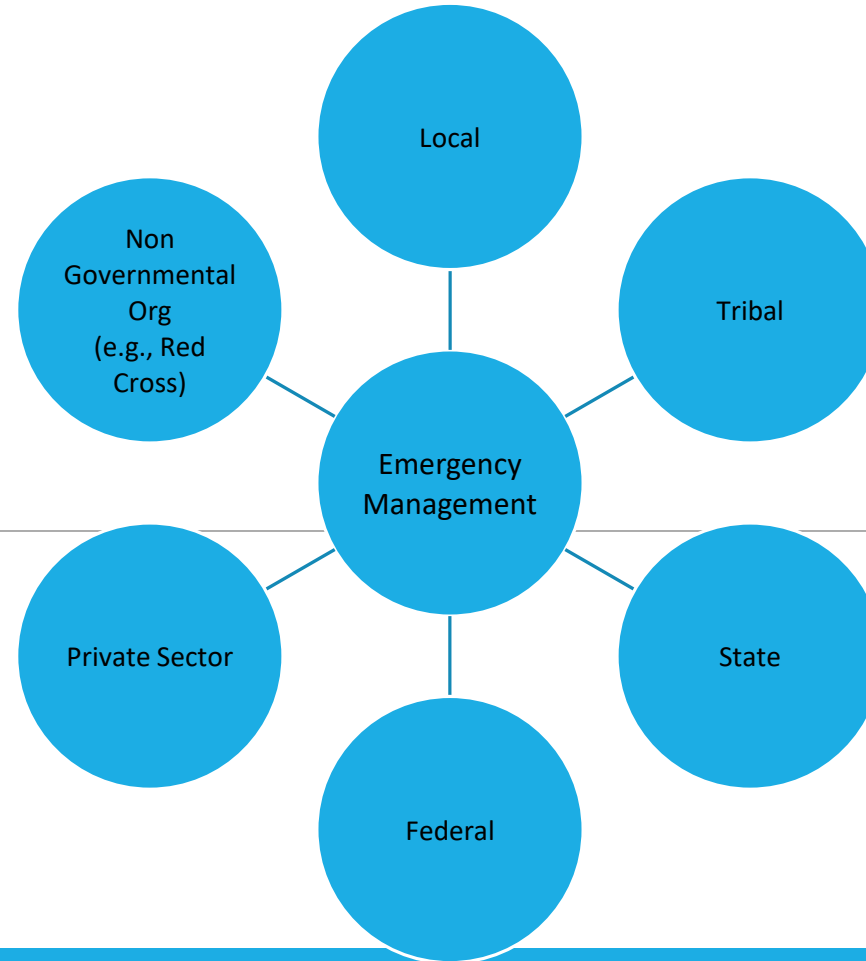
•**NATIONAL RESPONSE
FRAMEWORK**

•**STATE RESPONSE
FRAMEWORK**

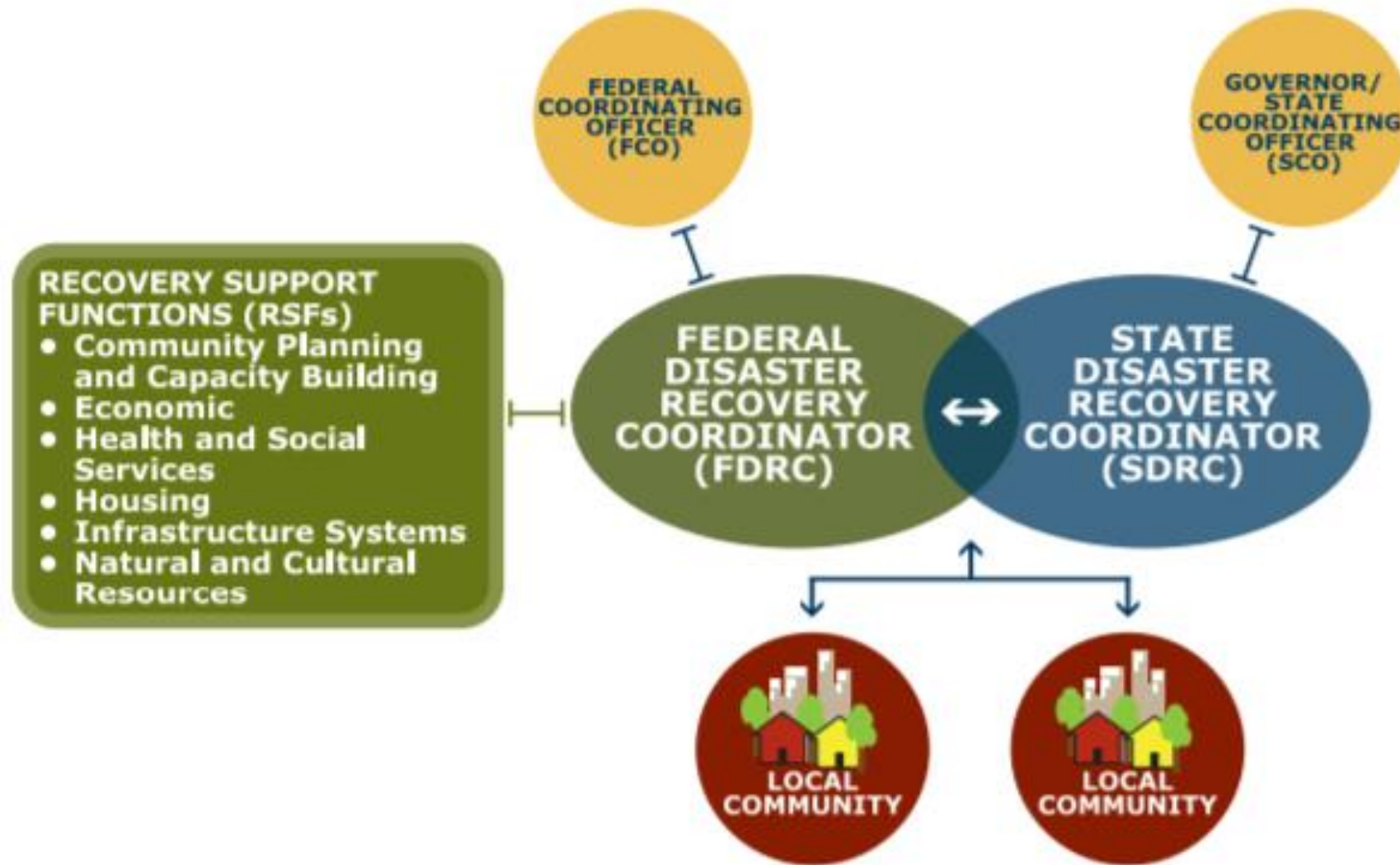
•**STATE DISASTER
RECOVERY
FRAMEWORK**

•**REGIONAL
EMERGENCY SUPPORT
PLAN**

•**LOCAL EMERGENCY
OPERATIONS PLAN**



FEMA/State Coordination Map: Large-Scale Events



Who are in these roles?

FEMA Federal Coordinating Officer(FCO) for CT COVID Disaster: ** FEMA Regional Administrator Russ Webster

FEMA Federal Disaster Recovery Coordinator (FDRC) for COVID Disaster: Jim McPherson with Cassandra Thomas as Federal Disaster Recovery Officer (FDRO)

State Coordinating Officer of CT COVID Disaster: State Emergency Management Director Bill Hackett—Alternate SCO Brenda Bergeron

State Disaster Recovery Coordination Team includes...

- Governor's Senior Policy Advisor Mary Glassman
- DECD Commissioner David Lehman and Deputy Commissioner Glendowlyn Thames

**Note: Bob Fogel is FCO for TS Isaias Disaster and also Deputy FDRC for COVID Long Term Recovery

Federal and State Long-Term Recovery Key Contacts

FEMA Region 1 COVID-19 Long-Term Recovery Task Force

FEMA Region 1 Regional Administrator & COVID-19 Federal Coordinating Officer (FCO):

Captain Russell “Russ” Webster

Federal Disaster Recovery Coordinator (FDRC): Jim McPherson

Deputy Federal Disaster Recovery Coordinator (DFDRC): Bob Fogel

Federal Disaster Recovery Operations Officer (FDRO): Cassandra Thomas

FEMA State Long-Term Recovery Liaisons:

CT: Dr. Christopher Zevitas

Tribes: Alexandra Oster

Solution Based Teams Support for CT:

Madison Ovadek

Priyanshi Mittal

CT Statewide Recovery Steering Committee

State Coordinating Officer of CT COVID Disaster (SCO):

State Emergency Management Director: Bill Hackett

Alternate State Coordinating Officer: Brenda Bergeron

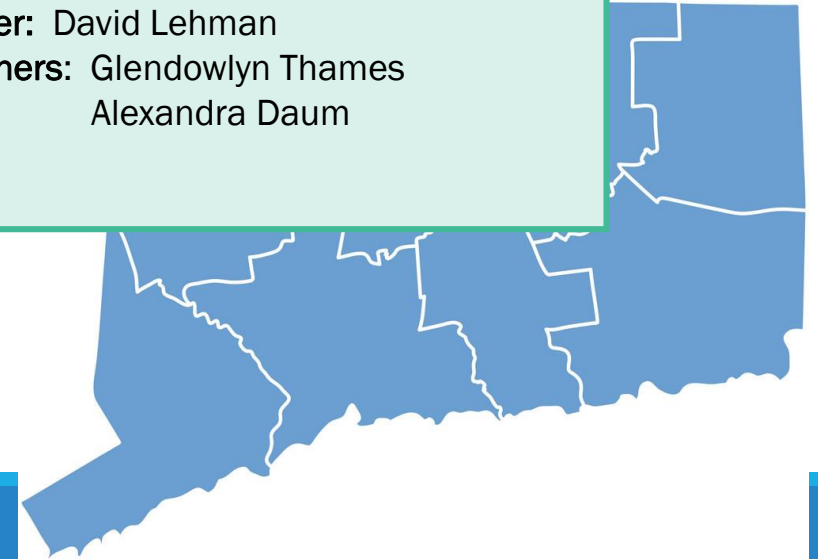
State Disaster Recovery Coordination:

Governor’s Senior Policy Advisor: Mary Glassman

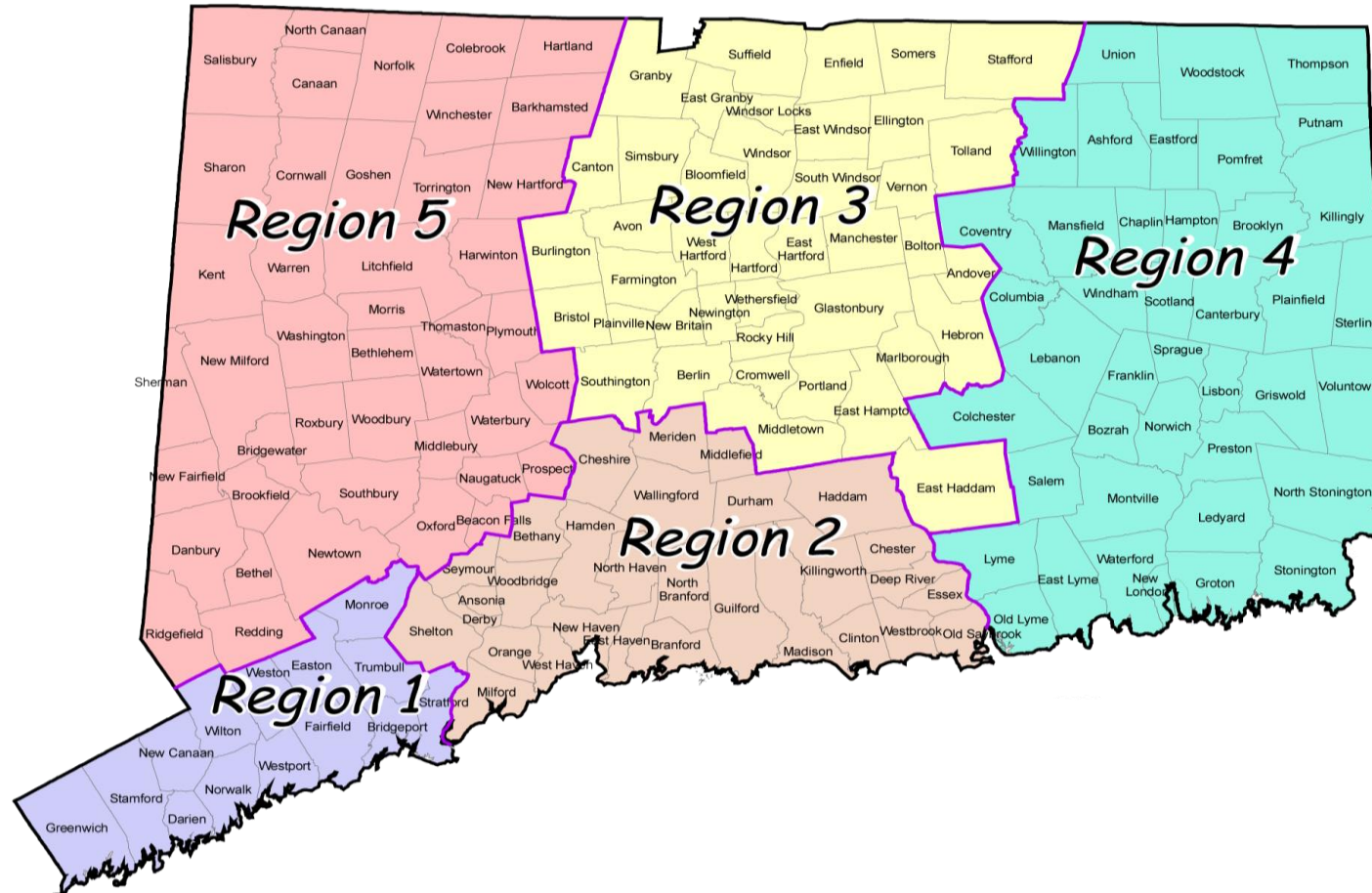
DECD Commissioner: David Lehman

Deputy Commissioners: Glendowlyn Thames
Alexandra Daum

NOTE: COVID Response Liaisons for CT: Justin Ratti and Enza DiMaio



DEMHS Regions and Regional Emergency Planning Teams (REPTs)



DEMHS Regional Coordinators

Region 1: Bob Kenny at Robert.Kenny@ct.gov

Region 2: Jake Manke at Jacob.Manke@ct.gov

Region 3: Bill Turley at William.Turley@ct.gov

Region 4: Mike Caplet at Mike.Caplet@ct.gov

Region 5: John Field at John.Field@ct.gov

CT State Disaster Recovery Framework: ESF-14

The state has operated its disaster recovery under the State Disaster Recovery Framework (SDRF). The Division of Emergency Management and Homeland Security (DEMHS), working with numerous partners, has convened a Statewide Recovery Steering Committee (ESF-14) to build a framework for recovery of communities through:

- Coordination of federal, state, local, and non-governmental resources
- Involvement of Connecticut non governmental organizations including “Volunteer Organizations Active in Disaster” (VOAD), and other non-governmental organizations including business and nonprofit sectors
- Education & outreach
- Mitigation and risk reduction programs & policies
- The committees and structure described in this power point, which are based on the SDRF.

5 DEMHS Regions—Each Region has a Regional Emergency Planning Teams (REPT)

Regional Emergency Planning Team (CEOs, COGs, and reps from all disciplines related to public health and safety and emergency management and response)

REPT Steering Committee (smaller group that steers the REPT)

DEMHS Regional Coordinator

Example RSF Working Group Combinations – Not Exhaustive

RESF-5 Emergency Management Working Group

RESF-6 Mass Care Working Group

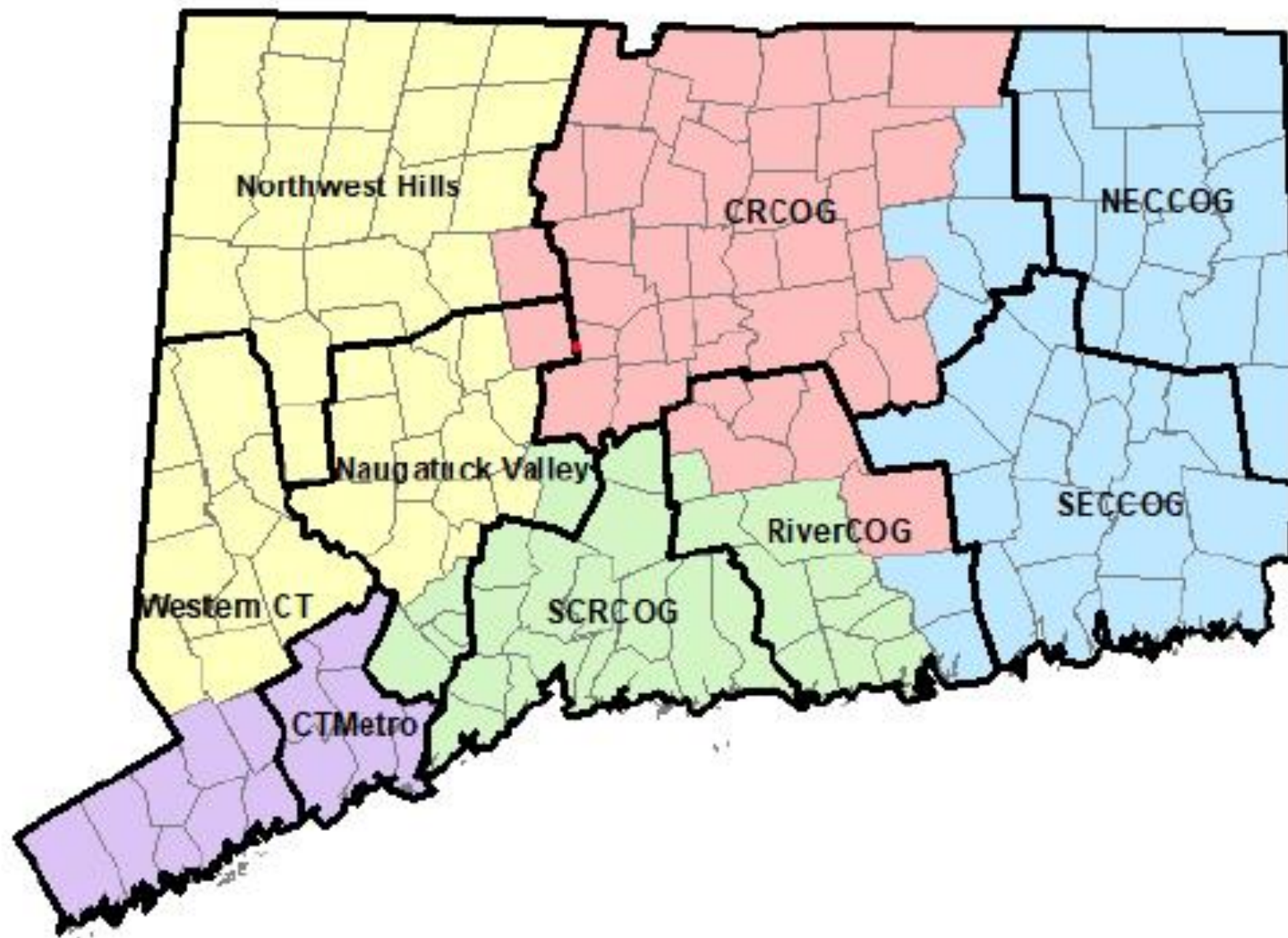
RESF-8 Public Health & Medical Working Group

Regional Recovery Steering Committee (RESF-14)
Regional Recovery Coordinator
Supported by COGs and GRI/McChrystal Group

Local ESF 14 Working Groups
Local Recovery Coordinator
(include ESF 6 for immediate needs)

Statewide Recovery Steering Committee (ESF-14)*

* May request assistance from FEMA Region 1 LTR Committee/Alternate Resource Management



Connecticut Division of Emergency Management and Homeland Security Regions

- DEMHS Region 1
- DEMHS Region 2
- DEMHS Region 3
- DEMHS Region 4
- DEMHS Region 5

Councils of Government outlined in bold

CT COVID Recovery Structure—Overview

Overall Structure of CT COVID Recovery

- Statewide Recovery Steering Committee
 - ESF 6/ESF 14 Statewide Task Force/Working Group
 - Charitable and Governmental Funding Sub-Committee
 - Higher Education Working Group
- 5 Regional Recovery Steering Committees (RRSCs)/5 DEMHS Regions
- 9 Councils of Government (COGs)
- Local ESF 6 Mass Care/ESF 14 Recovery Committees
 - Local Recovery Coordinator
 - Municipal Social Services
 - Local Providers, including faith-based organizations
 - Local Emergency Management
 - Local Public Health
 - Community Resource Coordinators (short-term case workers whose mission is defined by CT DSS Scope of Work)

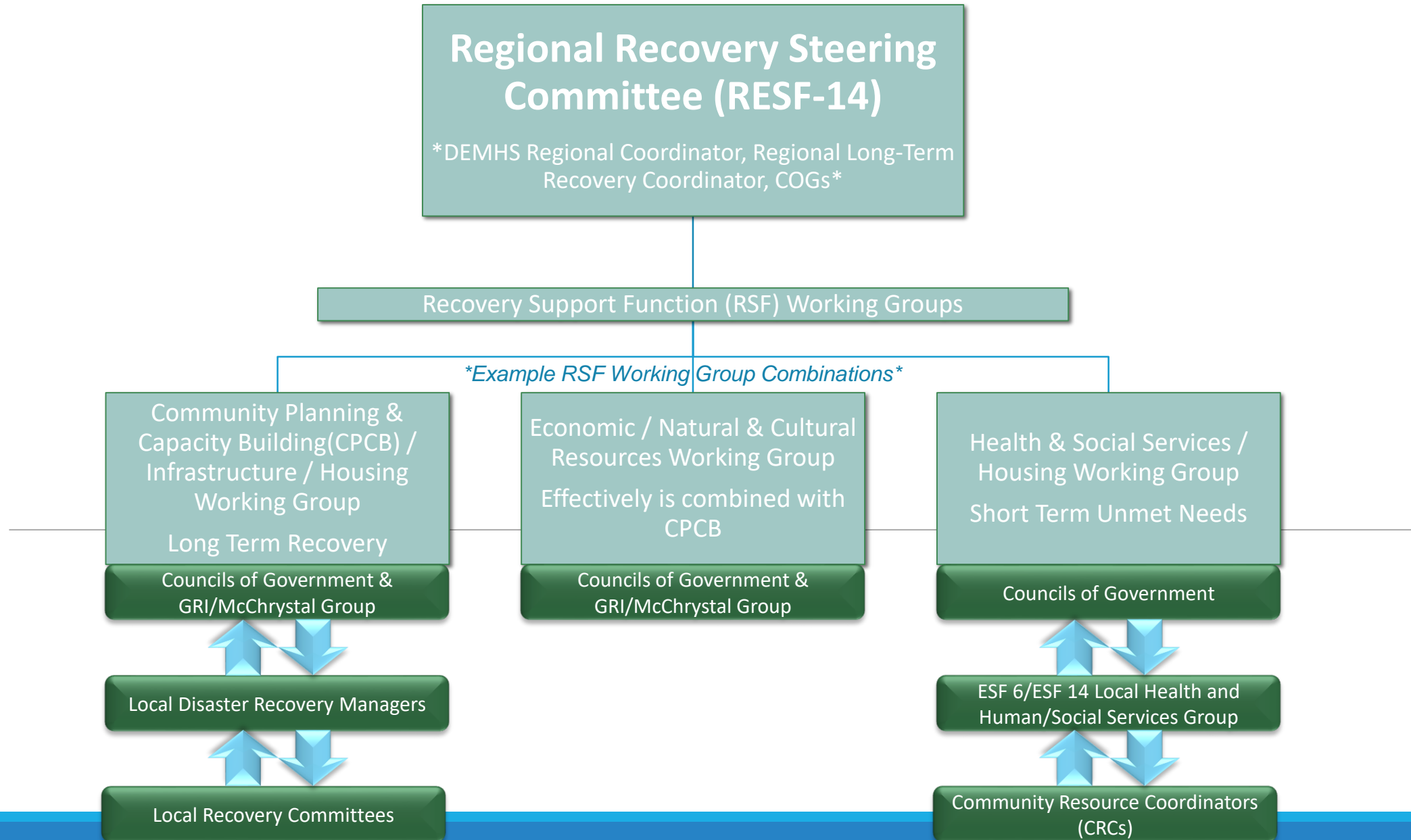
The Mission:

Working together, the Statewide Recovery Steering Committee, Regional Recovery Steering Committees, and local Recovery Committees, will...

coordinate efforts at the state, regional, and local levels and **provide support to efforts** to develop a comprehensive and effective path to recovery from the COVID-19 public health emergency for all Connecticut residents and all communities.

This mission is further divided into two categories: (1) short term, immediate unmet needs and (2) long term recovery.

Regional Recovery Organization in each DEMHS Region



CT COVID Recovery Structure—Short Term Individual Unmet Needs

Response/ Short Term Recovery Workflow



Local Level:

Municipal agencies, non-governmental organizations communicate with affected constituencies to identify immediate unmet needs/gaps in resources, assign priorities and attempt to resolve issues at the local level. This process has been used in previous disasters, including Super Storm Sandy, Hurricane Maria. Partners include:

- Local Recovery Committee (ESF 6 Mass Care /ESF 14 Recovery)—The Local Recovery Committee maintains communications link with local organizations that can provide Disaster Case Management. If the local group cannot resolve, LRC will input individual situation into a **statewide data base**. **FUNDING/OPERATIONAL NEED IDENTIFIED** United Way 211 has assisted with this database function in the past.

Issue will be reviewed by Health and Human/Social Services Working Group of the Regional Recovery Steering Committee.
- Community Resource Coordinators provided by the state/Department of Social Services (DSS) to monitor needs of those in isolation for 14 days as the result of COVID. CRC identifies any needs beyond the 14 days and inputs individual situation into statewide data base, with notification to Local Recovery Committee.



Municipal Long Term Recovery Coordinator / Committee

**** In all instances all local resources must be exhausted prior to forwarding a short term immediate unmet need and/or long term recovery need up the communications chain. ****

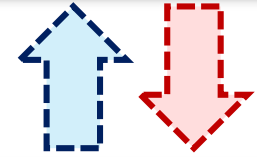
Assistance Needed:

Disaster Case Management
Healthcare
Housing
Food
Connectivity
Mental Behavioral Health Assistance
Diaper Assistance

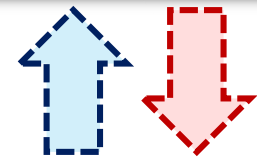
Regional Action Brief (Outline of Issue and Potential Solutions)

- Originating Municipality
- Unmet Need
- Background / Details
- Urgency / Timeline
- Proposed Solution
 - Funding
 - Programmatic
 - Legislative /Executive Order / Policy
 - Manpower

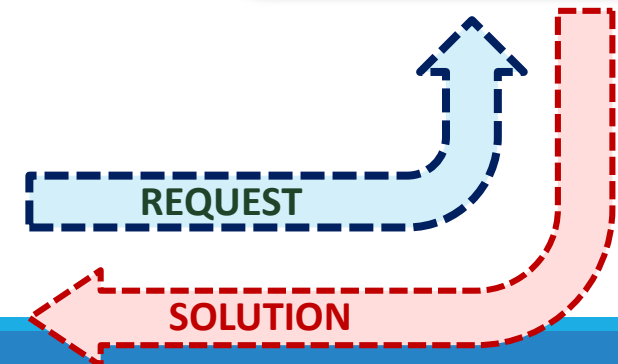
Statewide Recovery
Steering Committee
(ESF # 14)



Regional Recovery
Steering Committee
(RRSC) / COGs



Health & Human
Services RSF – Working
Group



Response/ Short Term Recovery Workflow



Regional Level:

Regional Recovery Steering Committees will coordinate efforts at a regional level to address immediate unmet needs arising from the Local Recovery Committees, which are the local ESF 6/ESF 14 groups. **COGs will actively participate in the RRSC, including providing administrative and organizational assistance. GRI/McChrystal may also provide assistance.**

- The Regional Health and Human/Social Services Sub-Committee is the ESF 6/ESF 14 working group at the regional level. This group will review the statewide database for unmet needs within its region.
- If the Regional Health and Human/Social Services Sub-Committee (1) identifies a global, systemic issue or (2) identifies an individual need that cannot be resolved at the regional level, the sub-committee will inform the chair of the Regional Recovery Steering Committee.



Response/ Short Term Recovery Workflow



Statewide Level: Statewide ESF 6/ESF 14 Task Force/Working Group

Each week, or sooner if needed, representatives from the 5 Regional Recovery Steering Committees will report out unmet needs to the **Statewide ESF 6/ESF 14 Task Force/Working Group** for review and resolution. This ESF 6/ESF 14 Task Force/Working Group was established as part of the Governor's Unified Command in response to the COVID pandemic:

- Led by Commissioner Amy Porter of the Department of Aging and Disability Services and Commissioner Bryan Hurlburt of the Department of Agriculture;
- Focus includes food, housing, child care and other human needs.
- Membership of the statewide ESF 6/ESF 14 Task Force will be adjusted to reflect the operational, issue-solving nature of its work.

For funding or systemic issues (e.g., legislative or Executive Order), State ESF 6/ESF 14 working group brings need to **Statewide Recovery Steering Committee and its Charitable and Government Funding Sub-Committee.**



Response/ Short Term Recovery Workflow



Statewide Level: Charitable and Governmental Funding Subcommittee

DRAFT

Mission: The Statewide Recovery Steering Committee or the Statewide ESF 6/ESF 14 Task Force may refer an issue to the Charitable and Governmental Funding Subcommittee for consideration.



How Global/Systemic Issues Move from Regional to State

Statewide Recovery Steering Committee (ESF-14)
Charitable and Governmental Funding Subcommittee of the SRSC
State ESF-6/ESF-14 Task Force reviews regional recovery action brief



Regional Recovery Action Brief

Outline of issue and potential solutions

- Originating ESF/RSF
- Constituencies
- Resource Gap vs Unmet Need
- Background/Details
- Urgency/Timeline
- Proposed Solution
 - Funding
 - Programmatic
 - Legislative/Executive Order/Policy
 - Manpower



Regional Recovery Steering Committee & Working Groups (RESF-14), after review of local unmet needs from local ESF 6/ESF 14 Group

Municipal Long Term Recovery Coordinator / Committee

IMPORTANT NOTE

*In all instances all local resources must be exhausted prior to forwarding a short term immediate unmet need and/or long term recovery need up the communications chain. ****

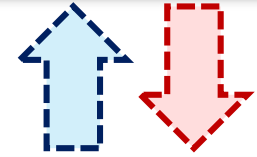
Assistance Needed:

Disaster Case Management
Healthcare, including Medications
Housing
Food, including Formula and Diaper Assistance
Connectivity
Mental Behavioral Health Assistance
Other Assistance

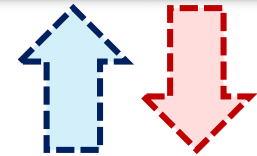
Recovery Action Brief (Outline of Issue and Potential Solutions)

- Originating Municipality
- Unmet Need
- Background / Details
- Urgency / Timeline
- Proposed Solution
 - Funding
 - Programmatic
 - Legislative /Executive Order / Policy
 - Manpower

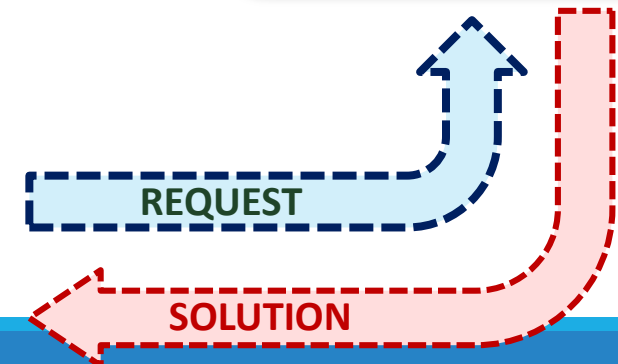
Statewide Recovery
Steering Committee
(ESF # 14)



Regional Recovery
Steering Committee
(RRSC) / COGs



Health/Human Services
Regional Working
Group





Statewide Recovery Steering Committee (ESF # 14)

Point of Contact

Mary Glassman – mary.glassman@ct.gov

RECOVERY ACTION BRIEF

Region 1 Regional Recovery Steering Committee (RRSC)

Matthew Fulda, Co-Chair
CT Metro Council of Governments
mfulda@ctmetro.org

Michele Deluca, Co-Chair
Norwalk Office of Emergency Management
Region 1 ESF-6 & ESF-14 Chair
mdeluca@norwalkct.org

Francis Pickering, Co-Chair
Western CT Council of Governments
fpickering@westcog.org

**Health & Human Services
Working Group**

Chair / Email address

**Economic
Working Group**

Chair / Email address

**Education & Technology
Working Group**

Chair / Email address

**Arts, Culture & Tourism
Working Group**

Chair / Email address

Municipal Long Term Recovery Coordinator / Committee

In Coordination with:

Municipal Social Services – Local Non-Profits – Faith Based Community – Municipal Local Health
Community Resource Coordinators

SHORT TERM IMMEDIATE UNMET NEED / LONG TERM RECOVERY NEED



Statewide Recovery Steering Committee (ESF # 14)

Point of Contact

Mary Glassman – mary.glassman@ct.gov

RECOVERY ACTION BRIEF

Regional Recovery Steering Committee (RRSC)

South Central Region Council of Governments
Co-Chair Carl Amento – camento@scrcog.org

Lower CT River Valley Council of Governments
Co-Chair Sam Gold – sgold@rivercog.org

Bethel AME Church New Haven
Co-Chair Rev. Steven Cousins – sacousin@gmail.com

Jake Manke, DEHMS Regional Coordinator
Jacob.manke@ct.gov

Bill Richards, Region 2 Long Term Recovery Coordinator
wrichards@milfordct.gov

Laura Francis, Steering Committee Municipal Liaison
lfrancis@townofdurhamct.org

**Health & Human Services RSF
Working Group**

TBD, Chair
Email address

**Economic / Natural Resources
Working Group**

TBD, Chair
Email address

**Community Planning & Capacity Building /
Infrastructure Working Group**

TBD, Chair
Email address

Municipal Long Term Recovery Coordinator / Committee

In Coordination with:

Municipal Social Services – Local Non-Profits – Faith Based Community – Municipal Local Health
Community Resource Coordinators

SHORT TERM IMMEDIATE UNMET NEED / LONG TERM RECOVERY NEED



Statewide Recovery Steering Committee (ESF # 14)

Point of Contact

Mary Glassman – mary.glassman@ct.gov

RECOVERY ACTION BRIEF

Region 3 Regional Recovery Steering Committee (RRSC)

Capital Council of Governments

RRSC Chair **Region 3 Lyle Wray** – lwray@crcog.org

Lauren Whitten, Region 3 Long Term Recovery Coordinator
lwhitten@enfield.org

RRSC Co-Chair

Empty

Region 3 Coordinator
Bill Turley

Health & Human Services RSF – Working Group

Brenda Downing, Health & Human Services Chair
Brenda.Downing@USE.SalvationArmy.Org

Regional Committee Municipal Liaison

Region 3 Coordinator **Bill Turley** William.turley@ct.gov

Municipal Long Term Recovery Coordinator / Committee

In Coordination with:

Municipal Social Services – Local Non-Profits – Faith Based Community – Municipal Local Health
Community Resource Coordinators

SHORT TERM IMMEDIATE UNMET NEED / LONG TERM RECOVERY NEED



Statewide Recovery Steering Committee (ESF # 14)

Point of Contact

Mary Glassman – mary.glassman@ct.gov

RECOVERY ACTION BRIEF

Region 4 Regional Recovery Steering Committee (RRSC)

Northeastern CT Council of Governments

Co-Chair Allan Cahill – firstselectman@hamptonct.org

John Filchak – john.Filchak@neccog.org

Southeastern CT Council of Governments

Co-Chair Mark Nickerson – mnickerson@eltownhall.com

James Butler – jbutler@seccog.org

Thames Valley Council for Community Action

Co-Chair Deborah Monahan – dmonahan@tvcca.org

Mike Caplet, CT DEMHS Region 4 Coordinator

Mike.caplet@ct.gov

Mike Licata, Region 4 Recovery Coordinator

mlicata@windhamct.com

Amanda Kennedy, Steering Committee Lead Staff

akennedy@seccog.org

Economic/Natural and Cultural Resources – Working Group

Lead Staff – Delia Fey

Delia.fey@neccog.org

**SECCOG Liaison – Sam
Alexander**

salexander@seccog.org

Health & Social Services/Housing – Working Group

Lead Staff – Hoween Flexer

Hoween.flexer@neccog.org

**SECCOG Liaison – Carly
Holzschuh**

cholzschuh@seccog.org

Community Planning & Capacity Building/Infrastructure – Working Group

**Lead Staff – Sam
Alexander**

salexander@seccog.org

**NECCOG Liaison – Alexis
Meehan**

Alexis.meehan@neccog.org

Municipal Long Term Recovery Coordinator / Committee

In Coordination with:

Municipal Social Services – Local Non-Profits – Faith Based Community – Municipal Local Health
Community Resource Coordinators

SHORT TERM IMMEDIATE UNMET NEED / LONG TERM RECOVERY NEED



Statewide Recovery Steering Committee (ESF # 14)

Point of Contact

Mary Glassman – mary.glassman@ct.gov

RECOVERY ACTION BRIEF

Regional Recovery Steering Committee (RRSC)/DEMHS Regional Coordinator

Martin Connor, Region 5 Long Term Recovery Coordinator
Martin_connor@torringtonct.org

Paul Gibb, Steering Committee Municipal Liaison
paulgibb@optonline.net

Naugatuck Valley Council of Governments
[Rick Dunn – rdunne@nvcogct.org](mailto:rdunne@nvcogct.org)
[Joanna Rogalski - jrogalski@cogcnv.org](mailto:jrogalski@cogcnv.org)

Northwest Hills Council of Governments
[Rick Lynn – rlynn@northwesthillscog.org](mailto:rlynn@northwesthillscog.org)
[Janell Mullen - jmullen@northwesthillscog.org](mailto:jmullen@northwesthillscog.org)

West Council of Governments
[Francis Pickering – fpickering@westcog.org](mailto:fpickering@westcog.org)
[Tucker Beckett – tbeckett@westcog.org](mailto:tbeckett@westcog.org)

Designated Working Groups

**Philanthropy & Finance –
Working Group**

Chair – Julie Loughran
jloughran@connct.org

**Education & Technology –
Working Group**

Chair – Dr. Jeffrey Kitching
kitching@edadvance.org

**Health & Human Services –
Working Group**

Chair – Jess Stelmazsek
jstelmazsek@nvhd.org

**Jobs & Business –
Working Group**

Chair – Lynn Ward
lward@waterburychamber.com

**Arts, Culture, Tourism &
Recreation – Working Group**

Chair – Lisa Scails
lscails@cawct.org

Municipal Long Term Recovery Coordinator / Committee

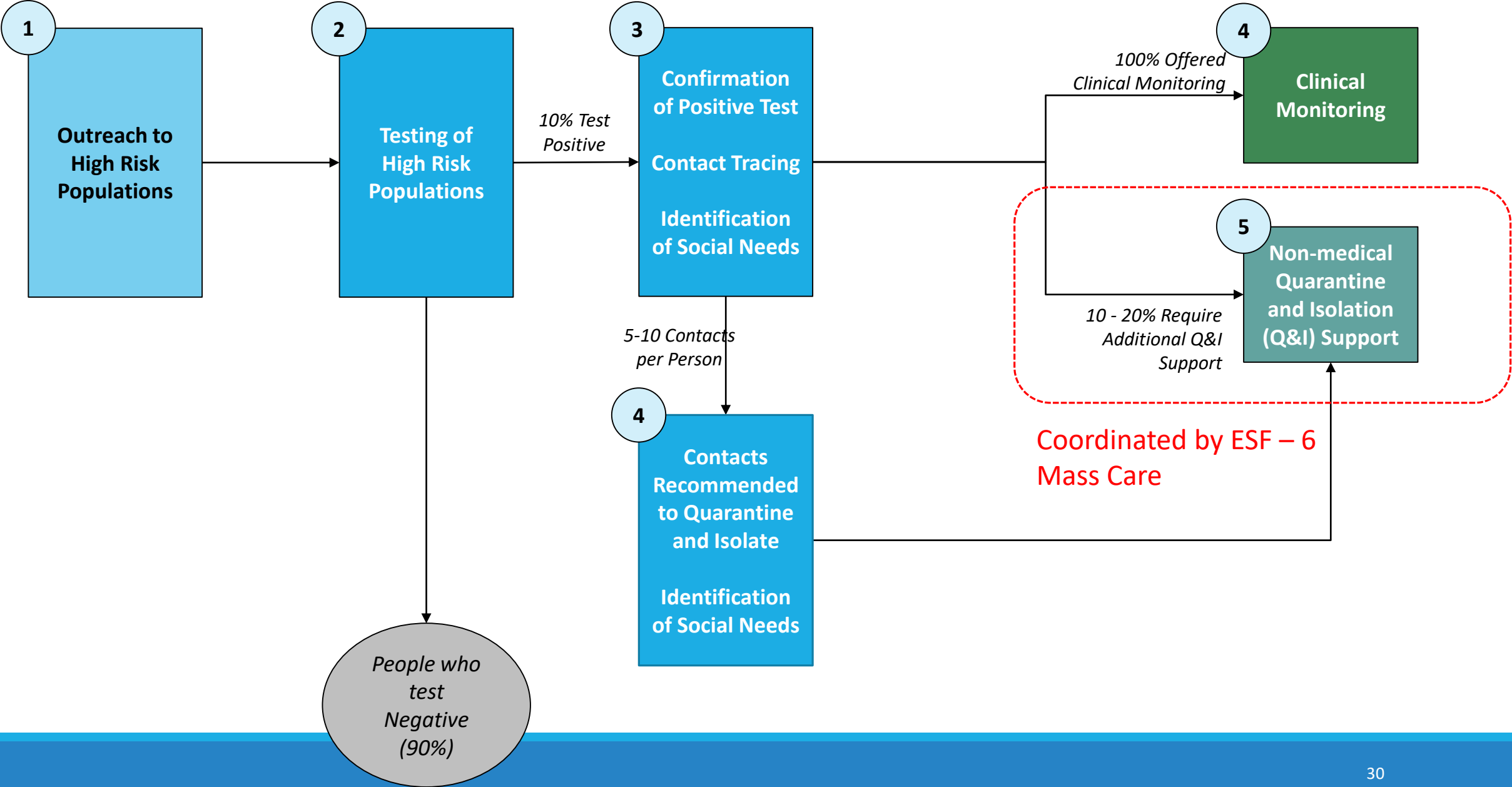
In Coordination with:

Municipal Social Services – Local Non-Profits – Faith Based Community – Municipal Local Health
Community Resource Coordinators

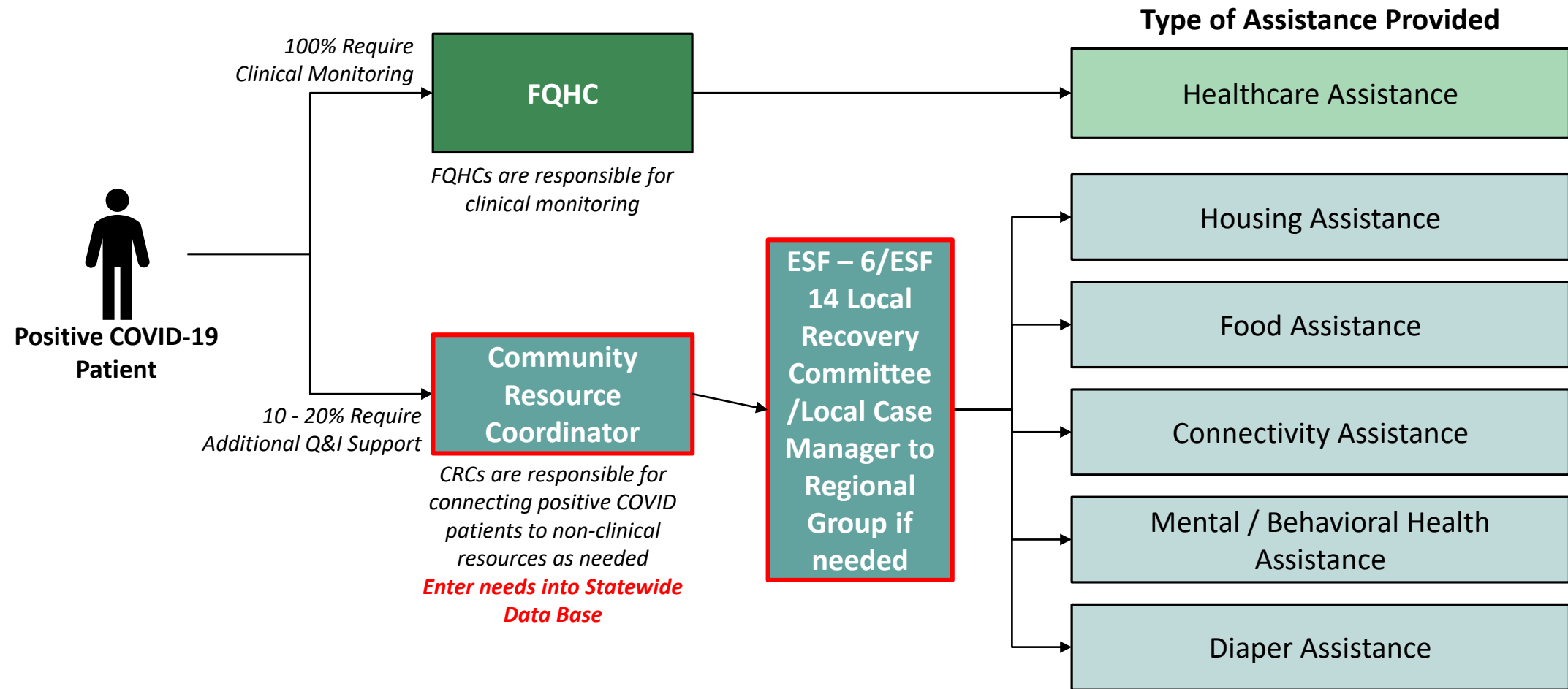
UNMET NEED

Example of Regional Coordination of Unmet Individual (Human) Needs Assistance Including Temporary COVID-Related Support: When Local Resources Are Not Enough

Testing and Support Process Flow For High-Risk Populations in a Community



Provision of Support During Quarantine & Isolation Period



Local resources will be leveraged as much as possible--
Identified gaps brought to regional and then statewide recovery steering committees

Unmet Human/Individual Needs Support Structure

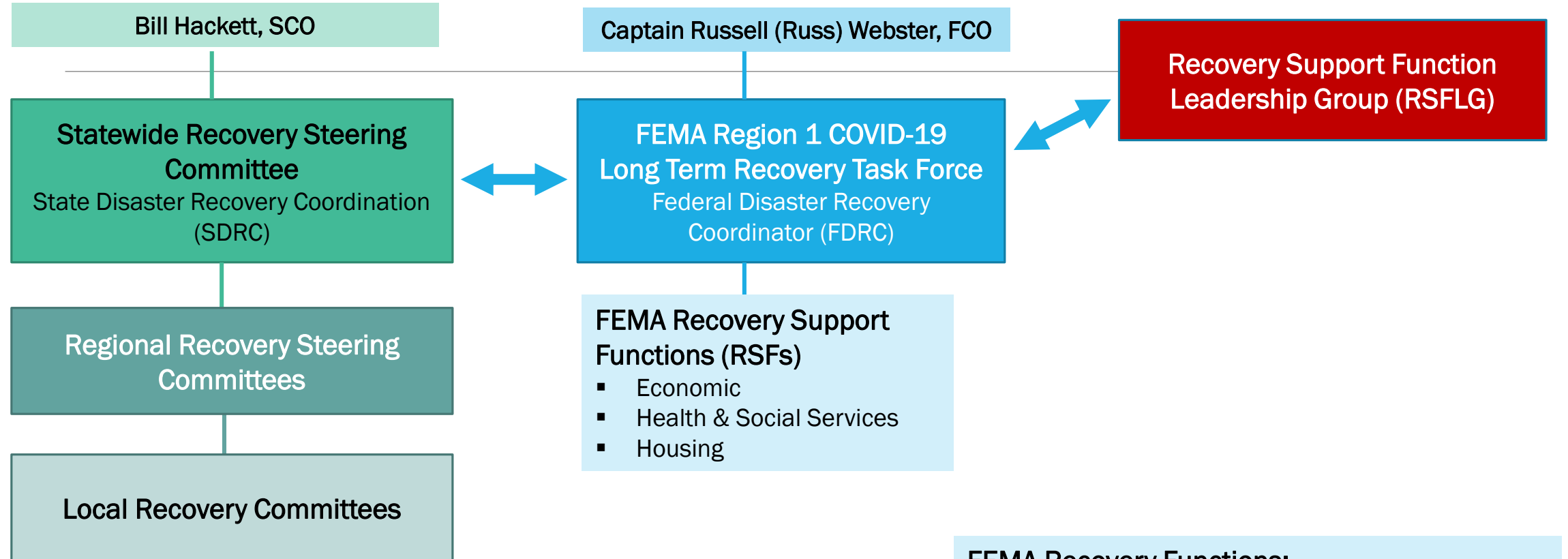


ESF-6/ESF-14 Local Recovery Committee Detail

- Each town will leverage its local ESF-6/ESF-14 Recovery Committee to coordinate local resources for unmet human needs, including to support Q&I individuals
- For Q&I individuals, this team will also include a short term (14-day) Community Resource Coordinator (CRC). This person is responsible for:
 - Liaising with contact tracers to identify those who need social services
 - Coordinating with the other stakeholders in the ESF-6/ESF-14 Recovery Committee to provide said support
 - The CRCs will report directly to the State Department of Social Services
- Additionally, each ESF-6/ESF 14 Recovery Committee will share any unmet human needs through a statewide data base, and with the RRSC Health and Human/Social Services Working Group, with a copy to the DEMHS regional coordinator and/or appropriate COG in order to identify gaps in support that the local Recovery Committee may not be able to provide.

CT COVID Recovery Structure—Long Term Economic Recovery/Community Planning and Capacity Building

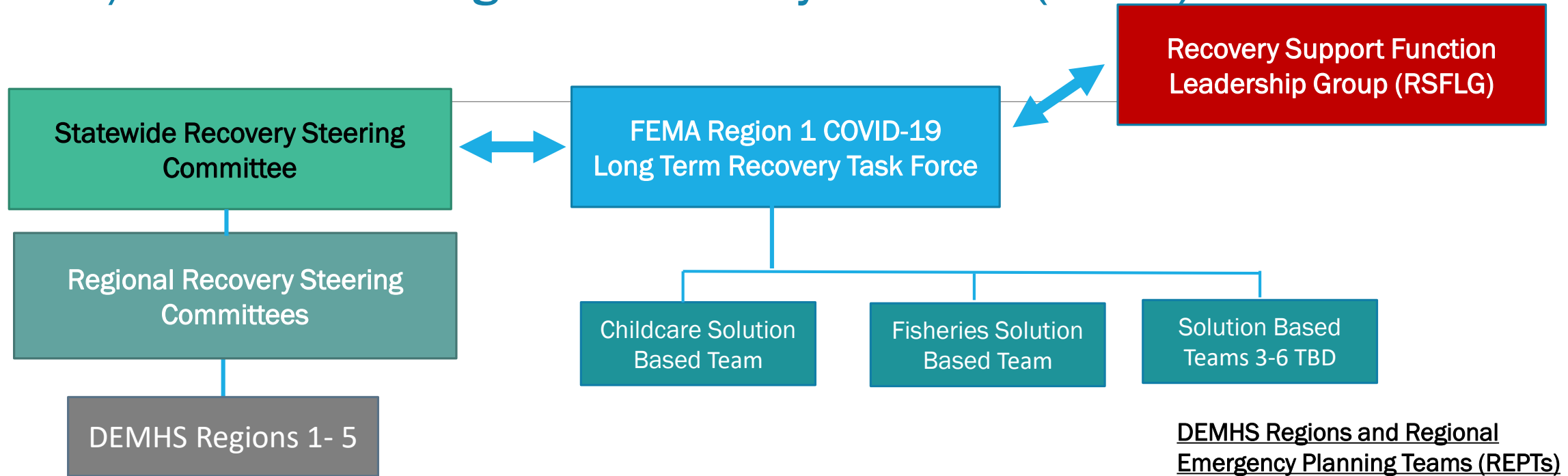
FEMA/Connecticut Long-Term Recovery Coordination Structure for COVID-19



FEMA Recovery Functions:

- State-led, locally executed, federally supported
- Coordinates with 108 Federal Agencies
- Sector-Based Recovery with Solution Based Teams
- Long-Term Resilience Building

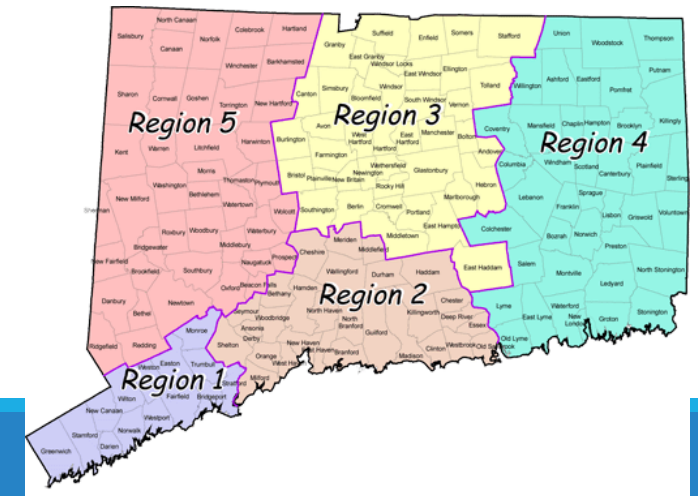
FEMA/Connecticut Long-Term Recovery Structure (cont'd)



DEMHS Regions and Regional Emergency Planning Teams (REPTs)

Recovery Functions:

- Coordinates with 108 Federal Agencies
- Sector-Based Recovery with Solution Based Teams
- Long-Term Resilience Building
- RSF's can operate in an undefined period of time



FEMA

Long Term Recovery Workflow



Mission: *Working with the State Recovery Steering Committee, Councils of Government (COGs) and local Recovery Committees, **Regional Recovery Steering Committees will coordinate efforts at a regional level and provide support to local efforts to develop a comprehensive and effective path to recovery from the COVID-19 public health emergency for all Connecticut residents and all communities.***

With assistance from the COGs and the GRI and McChrystal Groups, Regional Recovery Steering Committees will work with municipalities to:

- Receive input from affected constituencies to identify long-term unmet needs/gaps in resources to the Statewide Recovery Steering Committee (ESF-14), assigning priorities and offering feasible ideas for potential solutions as possible;
- Coordinate efforts to assess local and regional recovery needs and to develop responsive recovery plans with an emphasis on forward-leaning vision and resiliency as key goals;
- Ensure communication regarding plans, resources, and guidance with Local Recovery Committees;
- Develop Recovery Support Function Working Groups appropriate to the Region to build and implement an accessible and effective recovery planning process; support regional and local response efforts by helping identifying key leaders and organizations who can contribute;
- In coordination with the Statewide Recovery Steering Committee (ESF-14), develop and implement recovery progress measures to support and influence course-changes as recovery progresses;
- Develop a long-term strategy to ensure that regions can mitigate risk over time and create resilient recovery systems so that communities can recover more quickly after future disasters.



How Economic Recovery Issues Move from Regional to State Review

Statewide Recovery Steering Committee (ESF-14)
Charitable and Governmental Funding Subcommittee of the SRSC
State ESF-6/ESF-14 Task Force may regional recovery action brief



Regional Recovery Action Brief

Outline of issue and potential solutions

- Originating ESF/RSF
- Constituencies
- Resource Gap vs Unmet Need vs. Future Goal
- Background/Details
- Urgency/Timeline
- Proposed Solution
 - Funding
 - Programmatic
 - Legislative/Executive Order/Policy
 - Manpower



-Regional Recovery Steering Committee & Working Groups (RESF-14), working with COGs and GRI/McChrystal solicits ideas and issues
-Local Recovery Committee may send issue to RRSC

Overview of Economic Recovery, Community Planning and Capacity Building

- DECD leads the Economic Recovery effort for CT, in consultation with OTG.
- The Regional Emergency Planning Teams, including the RRSCs, made up of local officials, and the Councils of Government (COGs), are key players in the recovery initiative. Every disaster begins and ends locally.
- For the purpose of COVID economic recovery planning, municipalities may choose to work with their primary COG, regardless of the DEMHS Region in which the COG is located. For all other purposes, municipalities remain in their designated DEMHS Regions.
- Jim McPherson is the FEMA Federal Disaster Recovery Coordinator, assisted by Cassandra Thomas, Federal Disaster Recovery Officer, Dr. Chris Zevitas and others.
- GRI/McChrystal have been hired through December 31 by the state to assist with the initial resilience baseline assessments.
- The goal is to maximize the use of available funding on key projects.

Role of GRI, McChrystal, COGs, and RRSCs: Phase I

- Per GRI:
 - Phase 1, September to December 2020: the consultants will provide capacity building support to the RRSCs, and produce regional resilience baseline assessments.
 - Phase 1: RRSCs will integrate current activities; increase inclusion of communities hardest hit by crisis; focus stakeholders on mutually beneficial projects that are best positioned to receive funding.
 - Phase 1: COGs are critical to data and information collection.
 - Phase 1 activities include (1) initial data and information collection; (2) stakeholder engagement to inform analysis; (3) resilience analysis and economic development recovery strategy, and; (4) completion of baseline analysis

Economic Recovery Phase 2: 2021-2022/EDA Application

- CT's COGs, through the Capitol Region Council of Governments (CRCOG), submitted a consolidated grant application for CARES Act funding through the EDA to support a 24-month grant beginning in December. The implementing partners are all 9 regional COGS and GRI; DECD and AdvanceCT; universities and industry associations.
- GRI/McChrystal will support capacity-building and planning efforts supported by US Economic Development Administration (EDA) and led by COGs.
- Recovery Coordinators for each of the 9 COGs (will collaborate and coordinate with Regional Emergency Planning Teams and their long term recovery coordinators)
- Regional Business Resource Centers
- Statewide Business Retention and Expansion
- Reimagining CT's Innovation Corridor
- Regional Comprehensive Economic Development Strategy (CEDS) repositioning

FEMA Role:

Region 1 COVID-19 Long-Term Recovery Task Force: Deliverables

Mission Scoping Assessment (MSA):

A summary of findings and issues related to the three Federal Recovery Support Functions (RSFs)

- Economic (EDA)
- Health and Social Services (HSS)
- Housing (HUD)



Solution Based Teams:

Work Groups comprised of Subject Matter Experts and stakeholders from:

- Federal Agency Partners
- State and local governments
- Academia, Private and Non-Profit Organizations



Recovery Support Strategies (RSS):

Recovery Support Strategies outline priorities for support and funding across states and tribes in the region.



FEMA

FEMA Solution Based Teams

Solution Based Teams:

Sector-based Work Groups comprised of Subject Matter Experts and Stakeholders including: Federal Agency Partners, State and Local governments; and Academia, Private and Non-Profit Organizations.

Childcare
(*existing)

**Fisheries/
Aquaculture**
(*existing)

**Higher
Education**
(pending)

**Solution Based
Team #4**
(TBD)

**Solution Based
Team #5**
(TBD)

**Solution Based
Team #6**
(TBD)



FEMA

FEMA Region 1 COVID-19 Long-Term Recovery Task Force:

Outcome-Based Recovery Approach

- Identify the needs for impacted sectors to include cross-sector interdependencies
- Identify federal, state, private sector and private non-profit funding opportunities
- Tie the needs and funding opportunities together
- Create a model for replication

Outcome-Based Results:

CT Fisheries:

- A Fisheries and Aquaculture Roundtable call was conducted in early June and a **Solution Based Team (SBT) formed**.
- At behest of the State, FEMA identified **local sector projects** that need assistance as well as overall coastal resilience strategies to be brought back to the wider SBT for technical assistance and funding identification.
- Projects include: **Port redevelopment with cold storage, placemaking redevelopment, wind farm support by the industry, new revenue streams, food processing reshoring strategies**. The Task Force is working with EDA, SBA and other federal partners for funding.
- Task Force **coordinated with NOAA** to provide \$1,835,424 in support of the sector.

Higher Education/K-12 Education:

- The Task Force has identified higher education as a **critical infrastructure sector**
- Through coordination with the Assistant Secretary of the Department of Education, the Task Force was able to inform the state recovery coordinators that DOE had **allocated funds for PPE, cleaning supplies and 'disruption to services' support** directly to the state departments of education, enabling the recovery stakeholders to redirect funds that were reserved for this purpose to other needs.



FEMA

