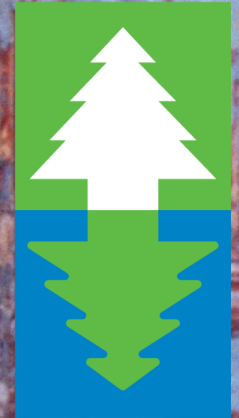




# Connecticut Greenway Update CRCOG

East Coast



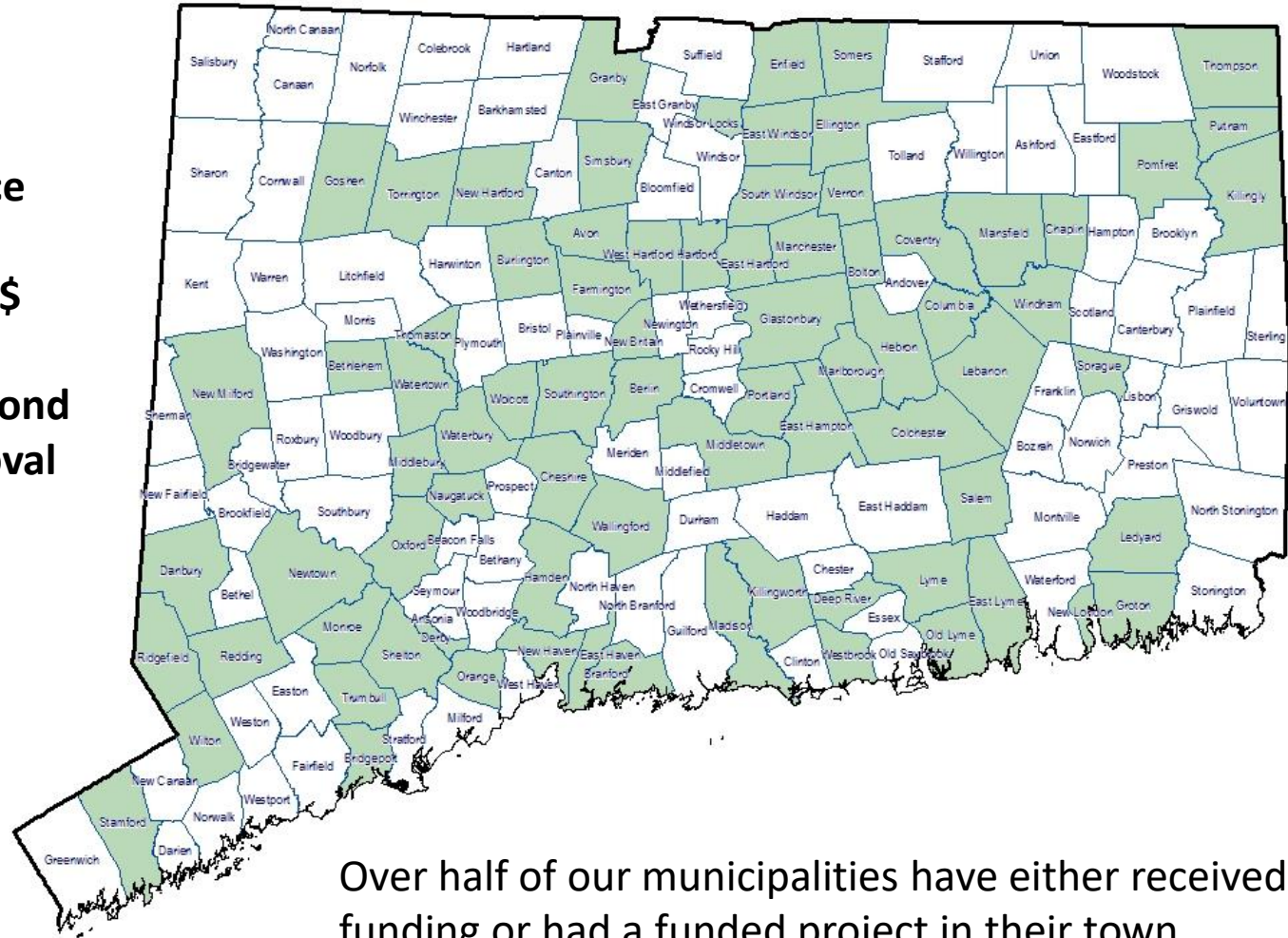
Greenway<sup>®</sup>  
ALLIANCE



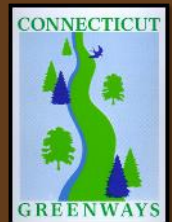
# CT's Recreational Trails Program

## Grants For:

- ❖ Design
- ❖ Technical Assistance
- ❖ Outreach
- ❖ Everything federal \$ won't pay for...
- ❖ \$3M awaiting CT Bond Commission Approval

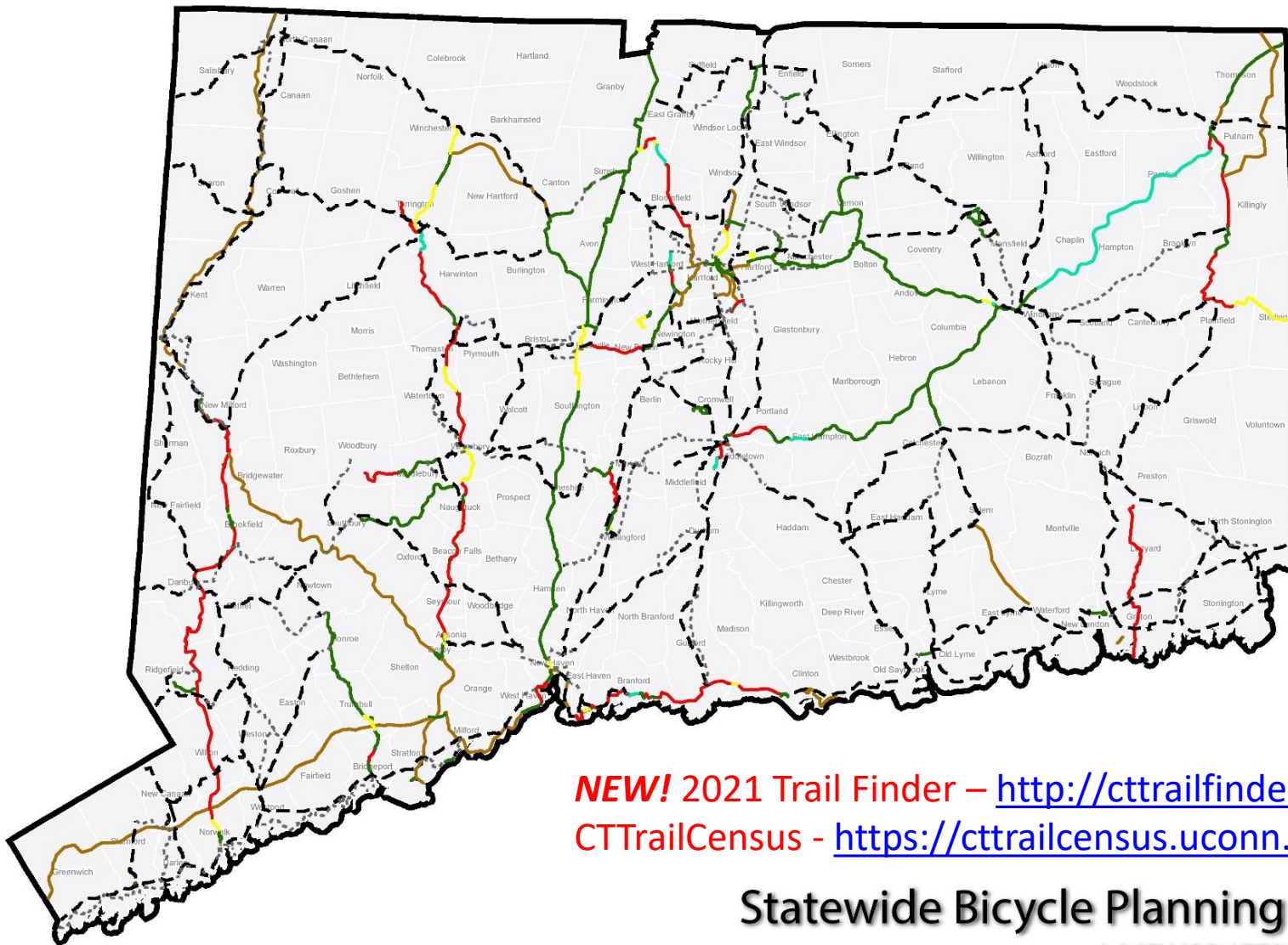


Connecticut Department of Energy  
and Environmental Protection  
Division of State Parks



# CTDOT's State Mapping

**Connecticut Trail Census**  
Statewide multi-use trail user study



## On-Road Bike Network

- State Maintained Road
- Municipal Maintained Road

## Trail Status

- Constructed
- In Construction
- In Design
- Planned
- Conceptual

### Disclaimer

The data presented here is for informational purposes only. The data is not to be used in legal documents or proceedings. The Connecticut Department of Transportation makes every effort to ensure the data is current and accurate. Neither the State of Connecticut, nor the Connecticut Department of Transportation, nor any of its employees, makes any warranty, expressed or implied, including the warranties of merchantability and fitness for a particular purpose or assumes any legal liability or responsibility for the accuracy, completeness, or usefulness of the data. Reliance on the data is at the user's own risk.

**NEW! 2021 Trail Finder** – <http://cttrailfinder.com>  
**CTTrailCensus** - <https://cttrailcensus.uconn.edu/>

**Statewide Bicycle Planning Network**

LAST UPDATED: MAY 14, 2019



# Ongoing Central CT Projects

- ✓ Bee Line Trail
- ✓ Central CT Loop Trail (proposed)
- ✓ CT River Trail North – E/W Connections
- ✓ Charter Oak Trail
- ✓ Hop River Trail
- ✓ Bloomfield/Hartford Connector
- ✓ Farmington Canal Heritage Trail



# CT's ECG Project

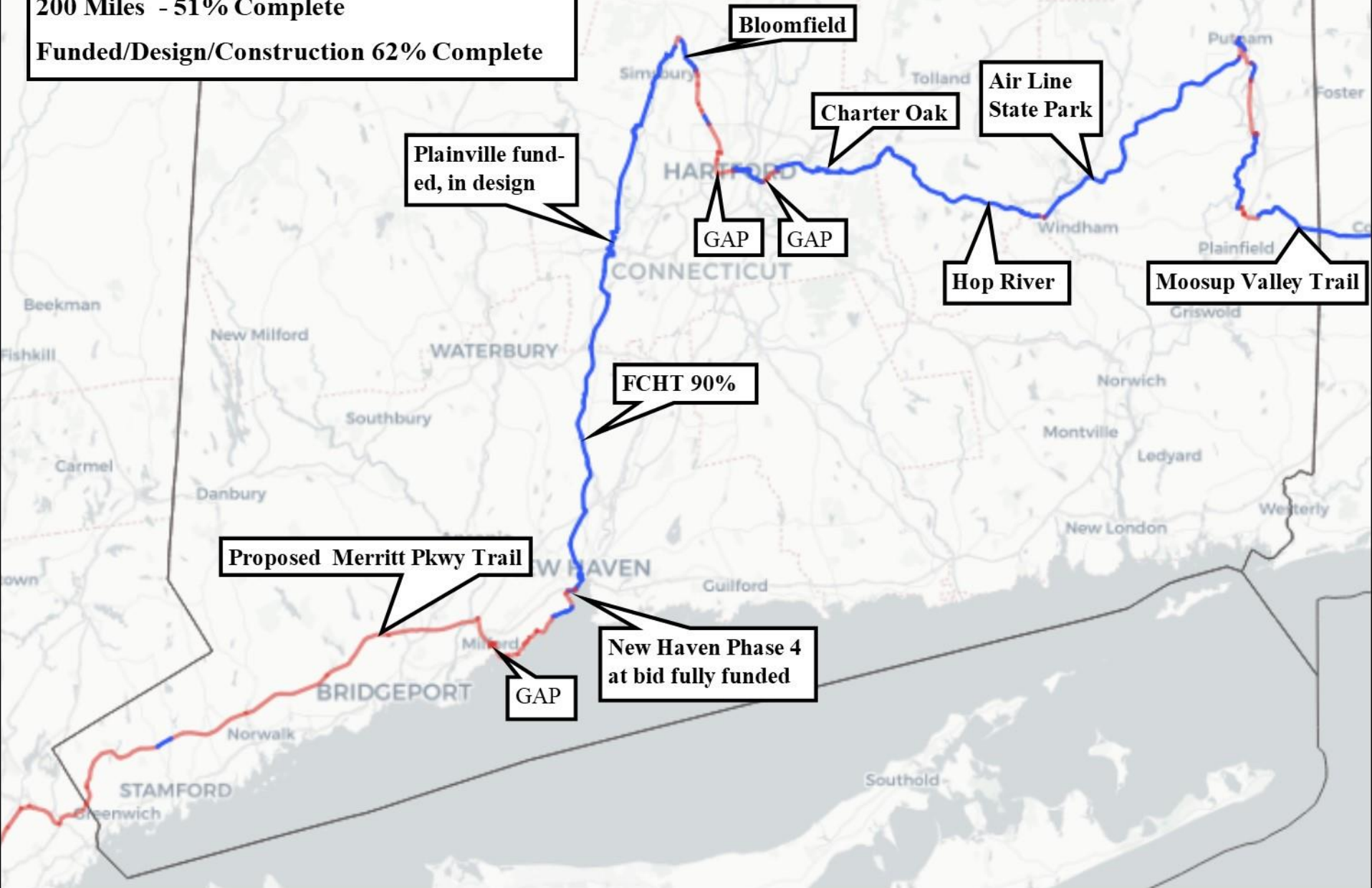
CT ECGA Funded Projects 2021-2025			Jan-21	
<u>Trail Name</u>	<u>Mileage</u>	<u>Description/Note</u>	<u>M\$ Funded</u>	<u>Consultant/Project/\$\$</u>
<b><u>2021</u></b>				
Air Line Crossings Pomfret & Putnam	2.89	7; 5 under/over road; 2 at grade	5.10	DOT 111-124 TAP
	<b>2.89</b>		<b>5.10</b>	
<b><u>2022</u></b>				
Tariffville Connector 1	0.60	RT 315 at FCHT to Curtiss/Pattison Park	1.58	DEEP Rec Trails
FCHT - New Haven	1.60	Phase IV, Temple to Grove St.	10.90	DOT 92-621 Earmarks/TAP
Quinebaug River Trail Killingly	0.50	Gloria Ave to End of Pond Outfall - V	0.396	DEEP Rec Trails/Connectivty
Quinebaug River Trail Killingly	0.75	Pond Outfall to Plainfield Line Phase VI	2.40	DEEP Rec Trails/LOTCIP
Tariffville Connector 2	0.82	Main St to RT 189 Trailhead Bloomfield	1.16	DOT CT LOTCIP
	<b>4.27</b>		<b>16.436</b>	
<b><u>2023</u></b>				
FCHT - Southington	2.35	Lazy Lane to Town Line Rd.	1.80	BL/DOT 131-203 TAP
FCHT - Plainville 1	1.30	Townline Rd to Norton Park	3.90	DOT 109-173 Let'sGoCT!
Moosup Valley State Park Trail	5.50	Plainfield, Moosup Center to Sterling	2.10	BL/DOT 108-189/Let'sGoCT!
	<b>9.15</b>		<b>7.80</b>	
<b><u>2024</u></b>				
FCHT - Plainville 2	2.10	Town Center to Northwest Drive Lot	6.80	DOT 109-173
Hop River Columbia	0.83	King's Rd to new Willimantic River Bridge	4.00	BL/DOT 30-97/Let'sGoCT!
	<b>0.83</b>		<b>10.80</b>	
<b><u>2025</u></b>				
FCHT - Plainville 3	1.90	Norton Park to Town Center	5.40	DOT 109-173
	<b>1.9</b>		<b>5.40</b>	
<b>12 Projects Funded</b>	<b>19.04</b>	<b>62% Complete in state</b>	<b>45.54</b>	
Hartford/Windsor Riverwalk 1	2.6	Boathouse to just south of Meadow Brook	3.40	DOT 63-721 TAP



## East Coast Greenway Connecticut

200 Miles - 51% Complete

Funded/Design/Construction 62% Complete



# Tariffville Connector Phase 1

.82 miles

RT 189 to Main Street

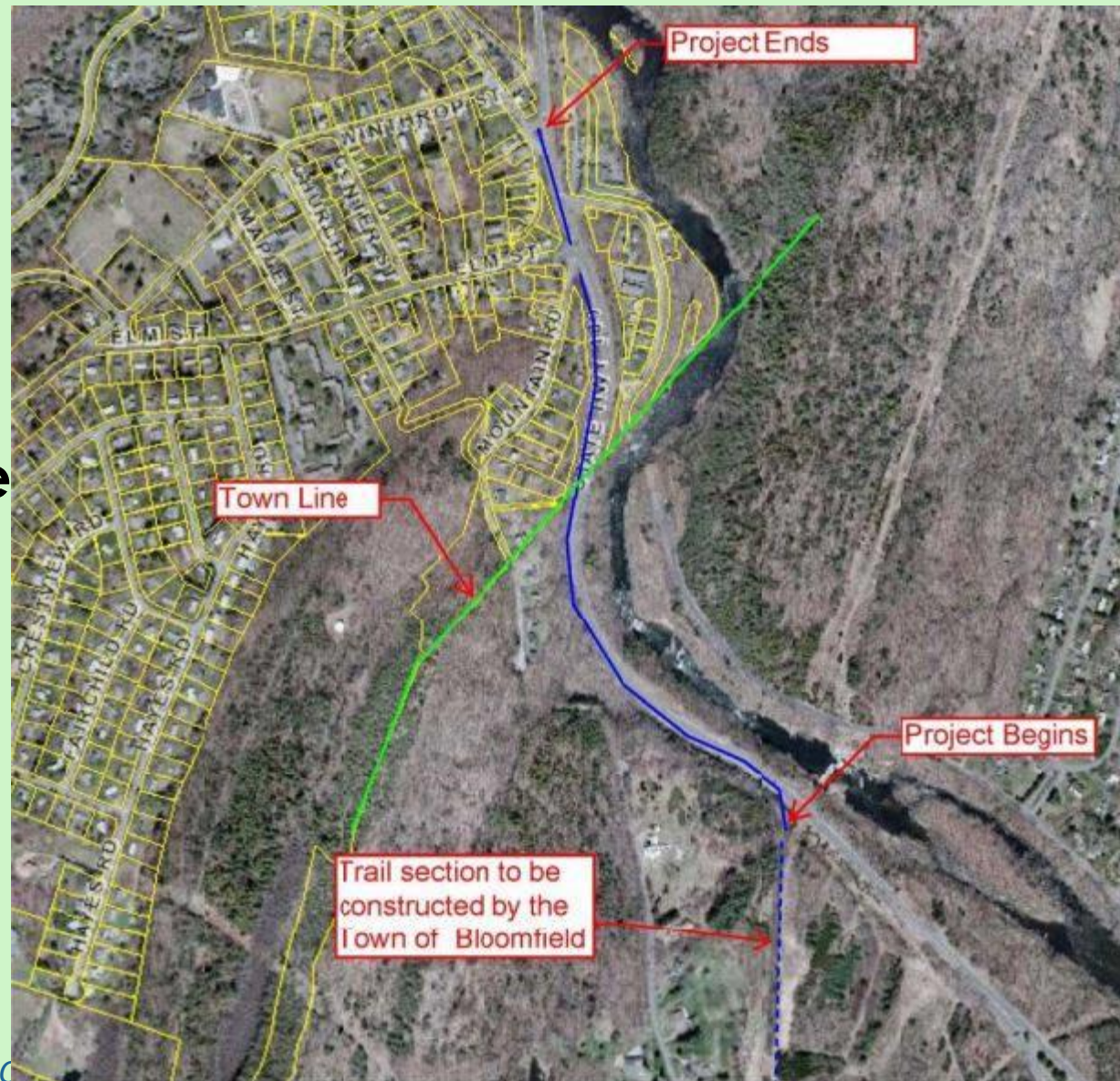
**\$1.16 M.** LOTCIP

Bids this spring

Construction '21+

1.8 miles of

Bloomfield Complete





# FCHT: New Haven Phase 4

1.6 miles, Yale to Water Street  
\$8.1/**10.9** million est.  
2<sup>nd</sup> Round of bids all too high  
Hope to start construction '21





# FCHT: Southington Phase 3

2.4 miles, Lazy Lane to Town Line Rd  
\$1.8 million est.  
BL Companies Design (4 years)  
Will go to bid this year  
For completion 2023





# FCHT: Plainville Phase 1

- 1.3 miles
- Town Line Rd. to Norton Park
- Follows route of historic canal tow path
- \$3.9 Million est.
- CTDOT internal design (35%)
- To bid late 2022
- Completion 2023/4





# Important Things

- ✓ **Gaps – Statewide urban/suburban/rural connectivity**
- ✓ **Funding – state bonding, Other strategies – LetsGoCT!, LOTCIP?**
- ✓ **Statewide mapping and user data!**
- ✓ **Potential for bike/ped federal stimulus**
- ✓ **Local advocacy**
- ✓ **Integral role of CRCOG**





# R. Bruce Donald, APBP

Tri-State Coordinator, ECGA

Chair, Connecticut Greenways Council

*[bruce@greenway.org](mailto:bruce@greenway.org)*

**860.707.2888**

