

# CTrides: Quarter 3 Activity Summary

July—September 2021

## CTrides Website Updates

In July, two new sections were added to the CTrides website — “News” and “Materials” with associated links. For the “Materials” tab, all collateral materials were redesigned to be made available as downloadable PDFs for easy access. For the “News” section, CTDOT press releases highlighting transportation topics were added, including “Connecticut in Motion” webinars.

In August, development began for the AIRA compliant web-page, as requested by the CTDOT—a service that connects passengers who are blind or have low vision with live, personal agents who describe their surroundings for them.

In September, the design, build, and compliance review for this new web-page was completed. An easy access “AIRA” link was also added under the Commuters section. All communications were reviewed and updated to ensure accurate information, and Spanish translations were made available.

## “Along the Lines” Podcast

During this quarter, episodes 16-20 were recorded; episodes 15-19 were reviewed and edited; and episodes 13-17 were released and promoted throughout the quarter on social media (Facebook, Twitter, Instagram, LinkedIn).

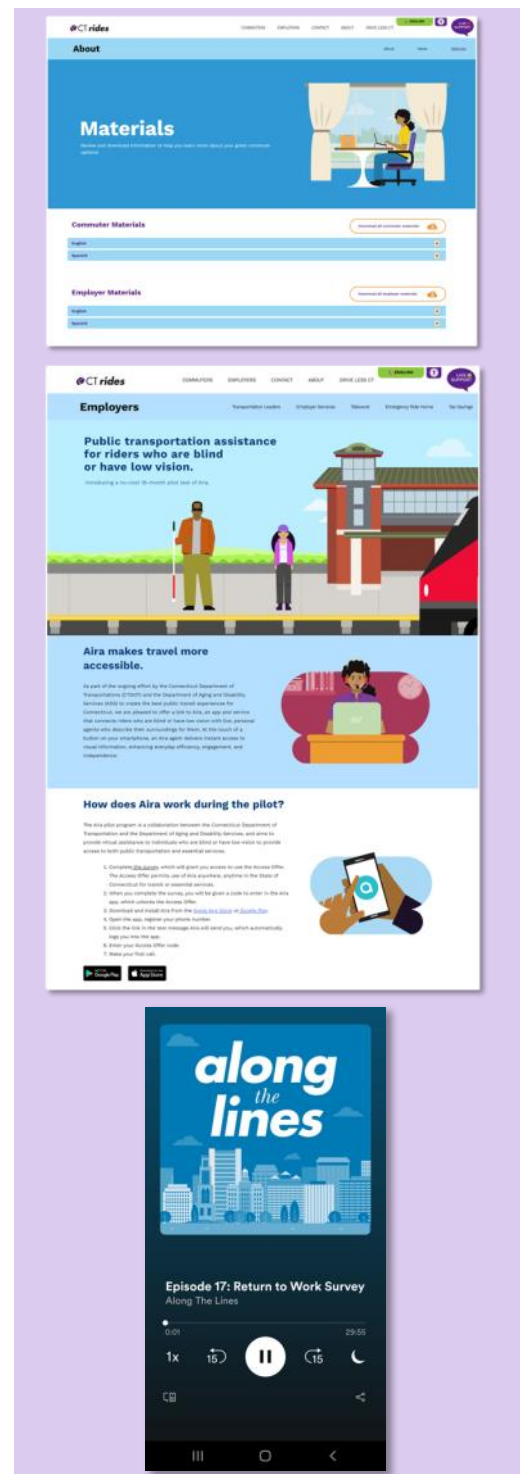
As of the end of quarter, the podcast had a total of 2,452 downloads for the following episodes: Episode 13: The Future of Rail Travel in CT - Part 2 - Improvements; Episode 14: Essential Workplaces and the Essential Commute; Episode 15-16: The Future of Cities - Part 1 and Part 2; and Episode 17: Return to Work Survey. Also, in August, the development of a new marketing campaign to boost podcast reach began and by September, the campaign was presented to DOT and their feedback was received.

## CTrides News Roundup

July, August, and September’s editions were distributed. The July edition included content for Weekend Wheels - Fare-free Summer Bus Service, ParkConneCT, Electric Buses, and Along the Lines Podcast.

August’s edition included content for Weekend Wheels - fare-free summer bus service, an announcement about the restored service on Connecticut Rail Lines, and a green fact of the month.

Finally, September’s edition included content for the Fourth Annual



## CTrides: Quarter 3 Activity Summary (Continued)

July—September 2021

Northeast Multimodal and Transit Summit announcement, *CTrail* updates, MTA Customer Feedback Survey invitation, mask reminder for transit customers, green fact of the month, and release of the latest episode of *Along the Lines* podcast.

### Weekend Wheels Summer Campaign

In July, the development of a list of events and destinations continued for the social media promotion. The Weekend Wheels social media assets also continued to be developed.

In August, the list of events and destinations for social media continued to grow and be promoted.

### DEEP Summer Parks Promotions – ParkConneCT

In July, the development of social media assets continued for the DEEP Summer Parks Promotions.

By August, the *CTrides* team coordinated and implemented a media buy to promote the program.

### “All About Trains”- Education Outreach Program

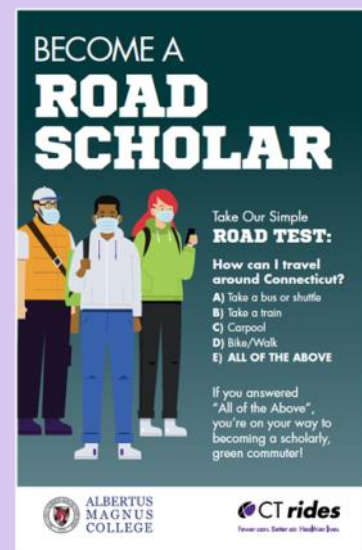
In July, the name for the education program that introduces students to the rail system, “All About Trains”, was selected and finalized. The program outline was developed, initial outreach to stakeholders began, and the program logo development was initiated. The marketing team compiled a list of possible promotional items for events. Salesforce was updated for data collection and account management purposes.

In September, we received approval from CTDOT for the logo and promotional materials were identified.

### Road Scholar

In July, the content for 40 participating schools was confirmed. Program brochures, both digital and printed, were distributed for 17 of the participating schools while the remaining 23 received only digital versions.

In August, additional program brochures were printed and distributed to four participating schools.



## CTrides: Quarter 3 Activity Summary (Continued)

July—September 2021

### Residential Transit Promotion Program

In July, the project plan for raising awareness and increasing ridership on the CTrail Hartford Line by educating area residents was developed. It included the creative development, media plan, channel and outreach strategy, and project timeline.

In August, the program outline was presented to the CTDOT and development began for the program creative.

### RFP for Direct Mail Services

In July, the selection team scored finalists and selected the winning bidder. The winning bidder's references were then contacted. After reviewing the references, the selection team announced their decision to all of the finalists and the winning bidder.

### 2021 Return to Work Survey

During July, the first draft of the topline and full survey report were received and reviewed.

In August, an updated survey and topline report was submitted to the CTDOT for review and feedback was provided.

In September, the report was finalized and accepted by CTDOT.

### Recruitments

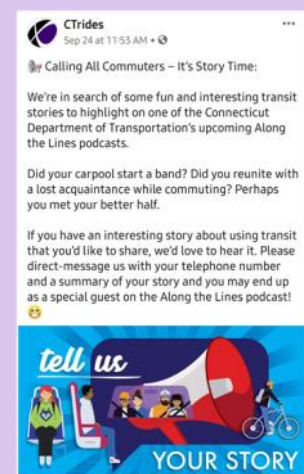
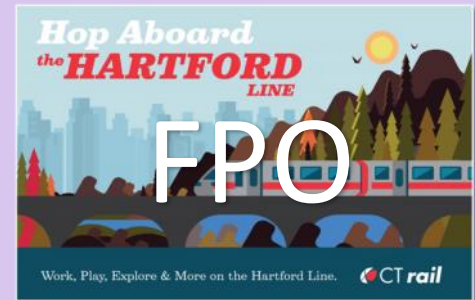
In August, interviews were conducted to fill two Marketing and Communications positions, two Commuter Program Manager (CPM) roles, and one Customer Service position.

By September, second interviews were conducted and four candidates were selected. The four selected candidates accepted offers and were scheduled to start in October.

### Social Media

During the quarter, numerous posts were published across social media platforms (Facebook, Twitter, and Instagram) of CTrides, CTrail Hartford Line, CTrail Shore Line East, and CTfastrak accounts.

In July, episodes 13 and 14 of "Along the Lines" were promoted on the CTrides social media accounts. CTrides also promoted the "Weekend Wheels Events Series" and "ParkConneCT" campaign, along with CTfastrak promoting the CT Summer Museums. In addition, CTrail shared posts about transit services in conjunction with events such as



# CTrides: Quarter 3 Activity Summary (Continued)

July—September 2021

the Jazz Fest, Hartford Yard Goats, New Haven Pizza, Pratt Street, and MGM Springfield. The Independence Day schedule was posted on CTrail accounts.

In August, the Taste of the Caribbean & Jerk Festival was shared on CTrides accounts. The next "Along the Lines" episode, The Future of Cities, was promoted on CTrides LinkedIn, Twitter, Facebook, and Instagram. Return of full-service on the Hartford Line and train delay alerts were posted to CTrail social media accounts. CTtransit Express 950 honoring tickets for August and September, The Jazz & Roots Festival was also shared by CTrail.

In September, "Along the Lines" podcast continued to be promoted across CTrides social media platforms. Posts went out on CTrides and CTfastrak about MTA surveys and requesting interesting stories from transit commuters as part of a new segment called "Commuter Stories" to supplement future "Along the Lines" episodes. CTrides and CTrail posted face mask reminders to ensure safety protocols. CTrail Hartford Line shared about their added shuttle buses to the "Big E" multi-state fair. Labor Day weekend, and suspended and resumed service updates were also posted on CTrail accounts. CTfastrak celebrated New Britain's 150th anniversary. CTtransit service disruptions were also shared by CTfastrak. The ParkConneCT campaign continued to be promoted on CTrides and CTfastrak social media platforms throughout the entire quarter.

### Agile Mile Updates

In September, the software code for the entire Agile Mile site to make compliant with the latest Apple standards was revised. Also, a few Trip Planner enhancements were implemented including an iOS compliant that is now available on CTrides App for iPhone devices, the transit directions to include all trip milestones consistent with Google Transit Maps was upgraded and the links to non-GTFS transit services for trips within these service provider areas were added. Finally, the Agile Mile homepage for CTrides was upgraded.

### Miscellaneous

#### Social Media Illustrations

The development of future holidays, campaigns, and transit social media illustrations continued until the end on July.



# CTrides: Quarter 3 Activity Summary (Continued)

July—September 2021

## Return to Worksite Commuter Toolkit

The development of a targeted return to worksite document for employers was created on July.

## Windsor Station Apartments Flyer

The development of a customized Hartford Line promotional flyer for residents near Windsor Station started.

## CTrides Live and Transit Operator Feedback Promotion

A poster to promote real-time feedback, and a digital copy to be used in tandem with virtual meetings and events was created in August.

## Return to School on Transit

A poster with safe travel facts on transit for students including a section for earning rewards while commuting was developed.

## Return to Transit Campaign

Also in August, a kick-off meeting with marketing and media vendors to discuss the elements of this new campaign, including the creative strategies, and marketing channels was held. The goal of this campaign is to raise awareness and increase ridership on CT trains and buses by educating people about the benefits of taking mass transit and reinforce that public transit is safe.

## Wesleyan Poster

In September, a poster to promote the use of the CTrides app for students riding Middletown Area Transit buses was developed and printed for an outreach event.

## Nearby Transit Options Handout Template

The development of CTrides branded templates to promote the use of transit for residents of apartment complexes and communities located near rail stations or bus stops started.



## Participating Organization Activity

As of September 30, the total number of CTrides employer participants, stakeholders and community participants was **316**.

### Highlights:

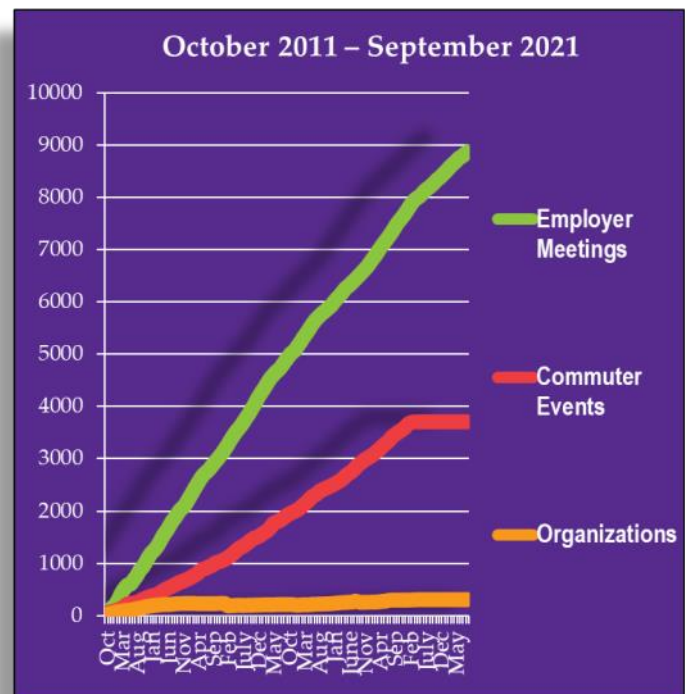
- Conducted initial outreach to employer and municipal partners for the Residential Transit Promotion
- Continued assisting partners with their return-to-work plans, with an emphasis on sustainable commuting modes
- Commute with Enterprise First Mile/Last Mile Service—Met with Enterprise and CTtransit to develop a list of possible areas to initiate the new transit feeder service
- Outreach Strategy Launch—Developed and launched a new outreach approach that increases resources along transit corridors and expands the level of coordination with community stakeholders and residential areas
- New Team Member—Hired and trained new Regional Commuter Program Manager to serve the New Haven region

### New Partners:

- Senior Living Residences (Farmington Station)
- Northwest Connecticut Reentry Council (CAACE)

The CTrides Outreach Team held **125 Events and Meetings** with our worksite partners during Q3. The total number of currently participating organizations is at **316**.

This quarter’s worksite activity, segmented by region, can be found on the following pages. A complete list of program organizations/stakeholders is in Appendix A.





## Regional Worksite Highlights

**Western CT includes Litchfield, Housatonic, Bridgeport & Stamford regions**

### Highlights

#### Charter Communications

Conducted an on-site transportation event to provide commuter information to employees relocating to Stamford. All employees will be on-site by 2022, which can hold 3,000 people, but there are only enough parking spaces for half. Additional outreach activities are planned

#### Linde (formerly Praxair)

Re-engaged Linde (formerly Praxair) as an active partner through Connecticut Commuter Rail Council outreach. Began planning carpool focused outreach events with ETC

#### Vineyard Wind

Working with ETC to incorporate CTrides programs and services into the New Hire / Onboarding process

#### Southwest Community Health Center Health Fair (SWCH)

Community event for SWCH patients to learn about the transportation resources available to them. CTrides / Greater Bridgeport Transit presented route information and other choice commuting options. Approximately 50 employees visited the information table

#### Northwest CT Reentry Council (CAACE)

Presented CTrides' programs and services for their re-entry to the workplace program. CTrides to provide ongoing consultation to the Council for reintegrated employees

#### Western Connecticut State University Clubs Carnival Event

Provided information on the U-PASS program and CTrides app. This outdoor event had several hundred students, faculty, and staff in attendance

#### Northwest CT Reentry Council

CTrides' information is now included in their Resources Guide under transportation (CTrides.com, Trip Planner, and Live Support)

#### Meetings

- Accessible Pharmacy
- Amazon (BDL 3)
- Bridgeport Regional Business Council
- Charter Communications, Inc.
- City of Bridgeport
- Connecticut Department of Labor
- Greater Bridgeport Transit
- HARTransit
- Linde
- Naugatuck Valley Community College
- NBC Sports Group
- Northwest CT Reentry Council (CAACE)
- Norwalk Transit District

- Paier College of Art
- Post University
- Southwest Community Health Center
- Stone Academy
- Town of Fairfield
- Vineyard Wind
- Western Connecticut Council of Governments
- Western Connecticut State University



## Regional Worksite Highlights

**Southern CT** includes Middlesex, New Haven & coastal regions

### Highlights

#### American Job Center

Conducted a joint presentation with North East Transportation Co. on CTrides' programs and services and transit for a soft opening of their workplace

#### Integrated Immigrant & Refugee Services

Partnered with CTtransit to coordinate transit training at New Haven Union Station and equipment tour for 10 adults and 5 children

#### Wesleyan University

Supported the launch and promotion of the Wes Pass pilot program to educate students that they will have free use of Middletown Area Transit with their student ID.

Marketing created unique collateral that to be used during orientation events in the coming weeks

#### Wesleyan University

In conjunction with Middletown Area Transit (MAT), the University launched a program that allows students to ride for free.

MAT reported 91 unique trips since the September launch and attributed part of its success to CTrides outreach/marketing.

#### American Job Center (AJC)

Presented commute options for employees re-entering the workforce through the AJC.

Created and shared collateral following the presentation with links to the Trip Planner, Transit Finder, Customer Service contact information, Go CT Card/CTtransit links, and app information.

#### Naugatuck Valley Community College (NVCC)

Worked to develop a Safe Transit to Schools brochure, resulting in expanded outreach opportunities at the Waterbury campus

#### Meetings

- Albertus Magnus (New Haven)
- Amazon BDL 3
- American Job Center (Waterbury)
- City of New Haven
- Connecticut Department of Labor(NW and SW Business Services Team)
- Stone Academy (Waterbury)
- University of New Haven
- Wesleyan University





## Regional Worksite Highlights

**Eastern CT** includes the Hartford, North and Central regions of Connecticut

### Highlights

#### **New Partner - Senior Living Residences (Farmington Station)**

CTrides staff reviewed the Commuter Tax Benefit program with the Employer Transportation Coordinator (ETC) at Senior Living Residences

#### **Connecticut Green Bank**

Began the development of a commuter survey with the Employer Transportation Coordinator (ETC) to identify commuting needs after Rocky Hill to Hartford relocation

#### **City of Hartford and Town of Windsor Locks**

Met with municipal partners to gain buy-in for Residential Transit Promotion outreach efforts and confirm participation in upcoming community events

#### **U.S. Federal Highway Administration**

Conducted presentation with CTtransit to explain CTrides' commuting tools such as the transit finder, the rewards program, the emergency ride home program and the availability of trial bus passes

#### **Connecticut Department of Aging and Disability Services**

Virtual event to promote choice commuting options for agency

employees returning to the Hartford office. Five employees visited the virtual event room and 496 employees visited CTrides' website during the event

#### **MetroHartford Alliance**

Initiated a partnership with the Business Development team to promote CTrides resources and transit options through their AllHart initiative – an initiative aimed to attract and retain young professionals to the Capital Region

#### **City of Hartford**

Met with City of Hartford Human Resources Department representative to discuss options and answer questions concerning their use of the commuter tax benefit

#### **CT Green Bank Return to Work survey**

Received 24 responses of which 7 employees from the New Haven region indicated that they are looking for a better commute. CTrides to present options with CTtransit in September

#### **Whitcraft Aerospace reintegration program**

Working with Whitcraft Aerospace to find commuting options for candidates in their reintegration program. In the initial phases of creating multiple vanpools from the Buckland Hills area to the Whitcraft Eastford campus

### Meetings

- Albertus Magnus (East Hartford)
- Asnuntuck Community College
- Beacon Hill Staffing Group
- C&S Wholesalers
- Capital Community College
- Center for Latino Progress
- City of Hartford
- Commute with Enterprise
- Connecticut Department of Aging and Disability Services
- Connecticut Department of Attorney General
- Connecticut Department of Energy and Environmental Protection - New Britain
- Connecticut Department of Transportation
- Connecticut Green Bank
- Connecticut Transit
- Conning
- Cyient
- Hartford Adult Education
- MetroHartford Alliance
- Middlesex County Chamber of Commerce
- North East Transportation Co.
- Senior Living Residences
- Stone Academy (East Hartford)
- The Hartford
- Town of Windsor Locks
- Travelers
- Trinity College
- U.S. Federal Highway Administration
- UCONN Health
- Walgreens Distribution
- Whitcraft Aerospace

### Customer feedback:

- *“Concise, direct answers and it’s really helpful to have this support option!!”*
- *“I received a quick and thorough answer to my questions”*
- *“The person who I talked to was very gentle and understanding of my frustration. She helped me to place a formal complain and did her best to explain the limitations of the system”*
- *“Excellent customer service!!! Got exactly what I needed. Thank you!”*
- *“It is always a pleasure having Lisa either respond to my emails or answer the phone when I call. She is a real gem!”*
- *“Outstanding and professional service. All my questions were answered”*

### Customer Service Highlights

CTrides/CTrail calls: 7,667

Custom Commute Plans: 44

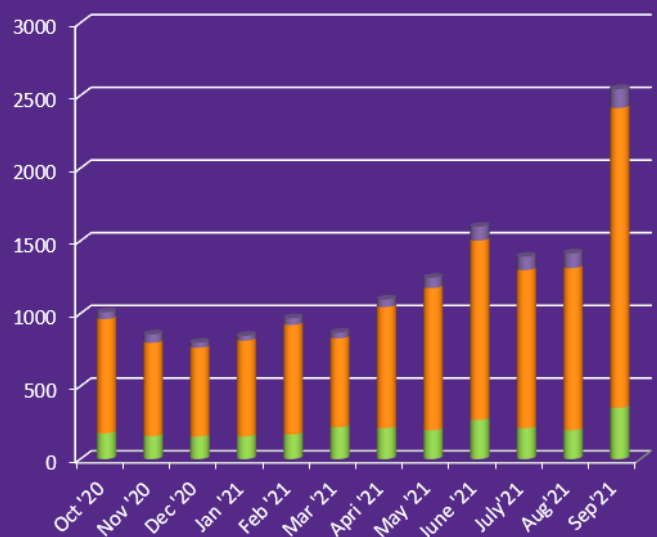
Total Number of Website Form Submissions: 484

Total Number of Emails Sent and Received: 762

### Customer Service Details:

- **5,355 Total** cases into CTrides
  - **4,266 calls**  
3 inquiries about available disabled services  
7 bilingual inquiries
  - **Sent and received 762 emails**  
Great or OK rating on 82% of emails surveyed
  - **Facilitated 327 live online chats of which 67 were SMS (text) chats**  
4.3 out of 5 (best) avg. rating on all chats
- **Provided 0 Emergency Ride Home**
- **Processed 151 CTrail Hartford Line and 47 CTrail Shore Line East** complaints, suggestions, questions
- **Distributed 0 trial bus passes to commuters** due to massive decrease in ridership caused by COVID-19.

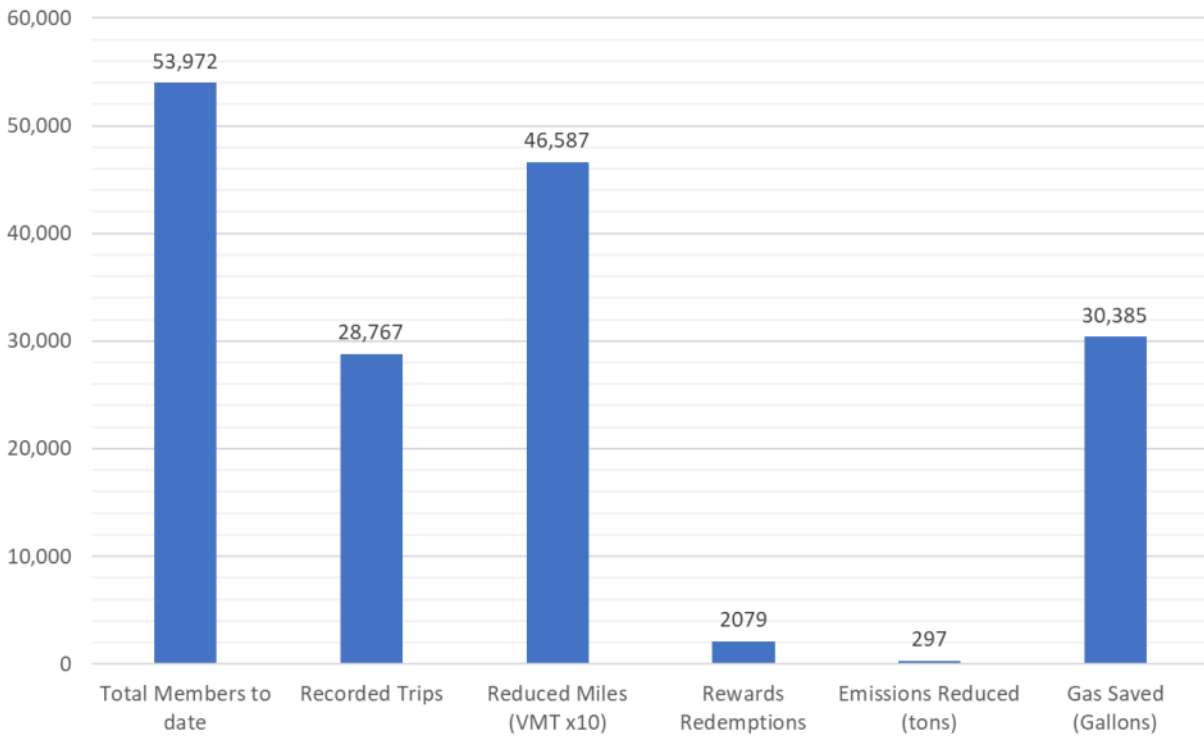
### 3rd Quarter 2021



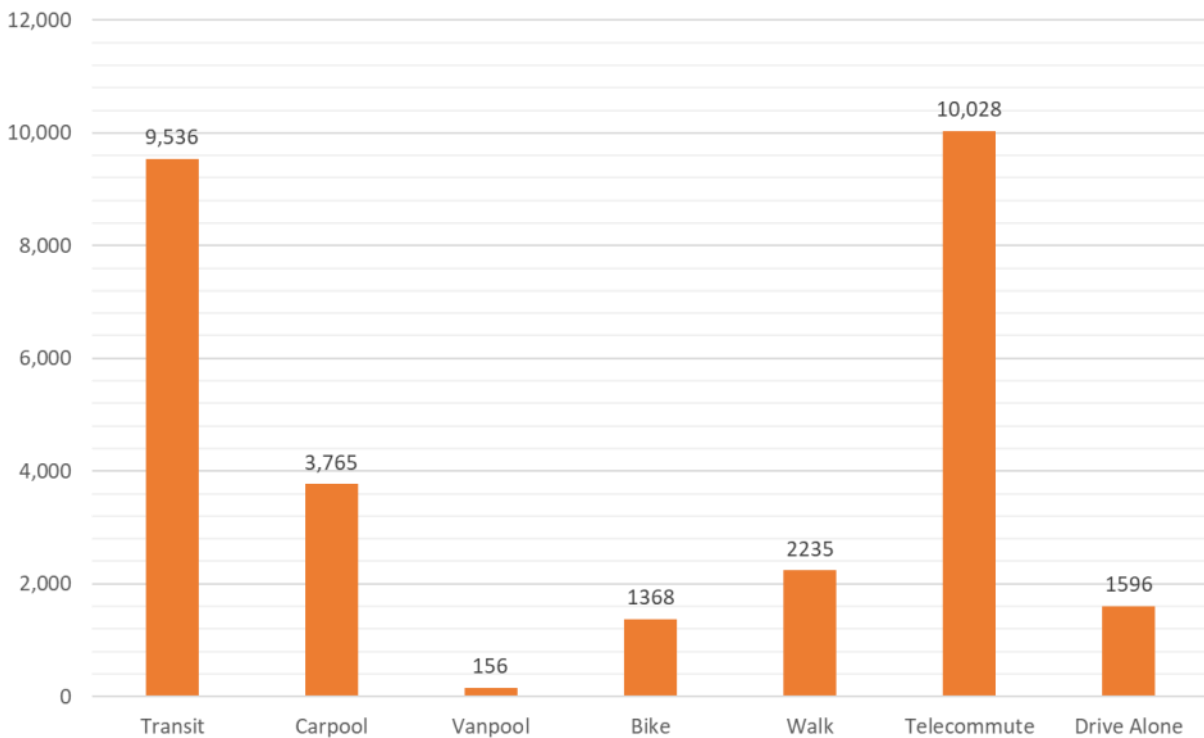
▶ **3,943 — Inbound Calls**    ▶ **327 — Online Chats**  
▶ **762 — Emails**

## Ridematching and Rewards

### Membership and Impacts



### Breakdown of Recorded Trips



**As of Q3 2021, there are more than 300 businesses, agencies and municipalities working with CTrides**

1. 3PL Worldwide
2. 9Town Transit
3. Advance Auto Parts
4. Advanced Behavioral Health
5. AECOM
6. Aetna
7. Albea
8. Albertus Magnus
9. Albertus Magnus (East Hartford)
10. Alexion Pharmaceuticals
11. All Our Kin
12. Amazon Fulfillment Center BDL-2
13. Amazon Fulfillment Center BDL-5
14. Amazon Sorting Center Wallingford
15. American Institute
16. Aptar Group
17. ARC of Litchfield County
18. Artspace New Haven
19. ASML, Inc.
20. Asnuntuck Community College
21. Avon Health Center
22. Becton Dickinson and Company
23. BHcare
24. Bigelow Tea
25. BikewalkCT
26. BLT Office (Norwalk)
27. BLT Office (Stamford)
28. Bradley Airport
29. Branford Hall (Branford)
30. Branford Hall (Southington)
31. Bridgeport Public Schools
32. Cabelas
33. Capital Community College
34. CARTUS
35. CDM Smith
36. Center for Latino Progress
37. Central Connecticut Chambers of Commerce
38. Central Connecticut Coast YMCA
39. Central CT State University
40. Chabaso Bakery, Inc.
41. Cigna
42. City of Bridgeport
43. City of Danbury
44. City of Meriden
45. City of New Britain
46. City of New Haven
47. City of Stamford
48. City of Waterbury
49. City of Waterbury - Public Health
50. Community Health Center of New London
51. Connecticare
52. Connecticut Children's Medical Center
53. Connecticut College
54. Connecticut Department of Developmental Services
55. Connecticut Department of Energy and Environmental Protection (Hartford)
56. Connecticut Department of Energy and Environmental Protection (New Britain)
57. Connecticut Department of Labor
58. Connecticut Department of Transportation
59. Connecticut Department of Veterans Affairs
60. Connecticut Green Bank
61. Connecticut Innovations
62. Connecticut Mental Health Center
63. Connecticut National Guard
64. Connecticut Probate Court
65. Connecticut Spring and Stamping
66. Connecticut State Insurance Department
67. Connecticut Valley Hospital
68. Connecticut Valley Industries
69. Connecticut Water
70. Conning, Inc.
71. Continuum of Care Inc.
72. CT Department of Labor
73. CTtransit
74. CTfastrak
75. Datto, Inc.
76. Department of Administrative Services
77. Department of Economic and Community Development
78. Department of Emergency Services & Public Protection
79. Department of Public Health (Hartford)
80. Department of Rehabilitation Services
81. Department of Revenue Services
82. Department of Social Services (Hartford)
83. Diageo, Inc.
84. Dollar Tree Distribution Center
85. DRS
86. East River Energy
87. Eastern Account System, Inc.
88. Eastern Connecticut State University
89. Eastern Connecticut Transportation Consortium
90. Eastern Workforce Investment Board
91. Electric Boat
92. Empire State Realty Trust
93. Enterprise Holdings
94. Enterprise Rideshare
95. ESPN

- |  |  |   |
|--|--|---|
| 96. Essex Steam Train and Riverboat                        | 132. Hubbell Incorporated                                  | 165. Middletown Area Transit                        |
| 97. ExecutNet  | 133. Human Resource Leadership Association of Eastern CT   | 166. Milford Transit District                       |
| 98. Fairfield University                                   | 134. i2systems   | 167. Mitchell College                               |
| 99. Foxwoods Resort and Casino                             | 135. IFG Companies (Guilford Specialty Group)              | 168. Mohegan Sun Casino                             |
| 100. FTD Florists  | 136. Inertia Dynamics Corporation                          | 169. Mystic Healthcare and Rehabilitation LLC       |
| 101. Fusco Corporation                                     | 137. Innovate Stamford                                     | 170. Mystic Marriott Hotel & Spa                    |
| 102. From You Flowers                                      | 138. IRS   | 171. Nalas Engineering                              |
| 103. Gateway Community College                             | 139. Jackson Laboratory                                    | 172. Naugatuck Valley Community College (Danbury)   |
| 104. Gaylord Specialty Healthcare                          | 140. JCC of Greater New Haven                              | 173. Naugatuck Valley Community College (Waterbury) |
| 105. Global Steering Systems                               | 141. Jewett City Savings Bank                              | 174. Naugatuck Valley Council of Governments        |
| 106. GoNHGO  | 142. Job Corps (Hartford)                                  | 175. Naval Submarine Base New London                |
| 107. Goodwill of Western & Northern CT                     | 143. Job Corps New Haven                                   | 176. New Britain CT Works Center                    |
| 108. Goodwin College                                       | 144. Jones Lang Lasalle Americas                           | 177. New Britain Downtown District                  |
| 109. Greater Bridgeport Transit                            | 145. Key Bank - New Haven                                  | 178. New Haven Coalition for Active Transportation  |
| 110. Greater Norwalk Chamber of Commerce                   | 146. Knights of Columbus                                   | 179. New Haven Mayor's Task Force on Bike Education |
| 111. Greater Waterbury YMCA                                | 147. Konica Minolta Business Solutions                     | 180. North East Transportation Co.                  |
| 112. Greenwich Board of Education                          | 148. Law offices of John Andreini                          | 181. Northwest Connecticut Reentry Council (CAACE)  |
| 113. Greenwich Chamber of Commerce                         | 149. Lawrence + Memorial Hospital                          | 182. Northwest Hills COG                            |
| 114. Group CBS Circuit Breaker Sales                       | 150. Lincoln Life Insurance/Freemont Group Management      | 183. Northwestern CT Community College              |
| 115. Hartford Adult Education Center                       | 151. Lincoln Technical Institute                           | 184. Norwalk Community College                      |
| 116. Hartford Foundation for Public Giving                 | 152. Live Green CT   | 185. Norwalk Housing Authority                      |
| 117. Hartford HealthCare System Support Office             | 153. Lower Connecticut River Valley Council of Governments | 186. Norwalk Transit                                |
| 118. Hartford Hospital                                     | 154. Manchester Community College                          | 187. Nucor Steel (Wallingford)                      |
| 119. Hartford Public Library                               | 155. Manufacturing Alliance Service Corporation            | 188. NWCC Center for Workforce Development          |
| 120. Hartford Steam Boiler                                 | 156. Marcus Partners Mgmt.                                 | 189. Office of Policy and Management                |
| 121. HARTransit  | 157. Mary Wade Home  | 190. Office of the Attorney General                 |
| 122. Henkel Corporation                                    | 158. MassMutual  | 191. Office of the Secretary of the State           |
| 123. Hispanic Advisory Council of Greater Stamford (HACGS) | 159. MedSource Consultants                                 | 192. Office of the State Comptroller                |
| 124. Hologic   | 160. Medtronic   | 193. Oracle Corporation                             |
| 125. Honeywell   | 161. Middlesex Community College                           | 194. Paier College of Art                           |
| 126. Hotchkiss School                                      | 162. Middlesex Community College - Meriden Campus          | 195. Paradigm Property Management                   |
| 127. Horizon Services Company                              | 163. Middlesex Hospital                                    |   |
| 128. Homegoods Distribution                                | 164. Middlesex Hospital Shoreline Medical Center           |   |
| 129. Homes For the Brave                                   |  |   |
| 130. Hospital for Special Care                             |  |   |
| 131. Housatonic Community College                          |  |   |

196. Pathway Lighting Inc.
197. Paul Bailey Architects
198. Pelli Clarke Pelli Architects
199. People Friendly Stamford
200. People's United Bank
201. PEP - Lacey Manufacturing
202. Pierce Care
203. Pitney Bowes-Danbury
204. Pitney Bowes-Shelton
205. Porter & Chester Institute (Branford)
206. Porter and Chester Institute (Enfield)
207. Porter and Chester Institute (Stratford)
208. Porter and Chester Institute (Waterbury)
209. Pratt & Whitney - Middletown
210. Pratt and Whitney
211. Prudential (Hartford)
212. Quinebaug Valley CC
213. Quinnipiac University
214. Quinnipiac University - North Haven Campus
215. Radiall USA Inc.
216. Randstad
217. Reckson/SL Green
218. Regal Care
219. RGIS
220. Rich Product Corporation
221. Saint Francis Hospital
222. Saybrook Point
223. Sea Corp
224. SeeClickFix
225. Senior Living Residences (Farmington Station)
226. Shipman & Goodwin
227. Siemon Company
228. Sikorsky Aircraft Corporation—Bridgeport
229. Sikorsky Aircraft Corporation—Shelton
230. Sikorsky Aircraft Corporation—Stratford
231. Society for Human Resource Management
232. South Central Regional Council of Governments
233. Southeast Area Transit
234. Southeastern Connecticut Council of Governments
235. Southern Connecticut State University
236. Southwest Community Health Center
237. St. Mary's Hospital
238. St. Vincent's College
239. St. Vincent's Medical Center
240. Stamford Chamber of Commerce
241. Stamford Downtown Special Services District (SDSSD)
242. Stanley Black & Decker
243. State Education Resource Center
244. State of Connecticut
245. Stone Academy (East Hartford)
246. Stone Academy (Waterbury)
247. Stone Academy (West Haven)
248. Sun Life Financial
249. Tauck Tours
250. The Business Council of Fairfield County
251. The Hartford
252. The Independence Center
253. The Kennedy Center, Inc.
254. The Watermark at 3030 Park
255. The Workplace
256. Three Rivers Community College
257. Thule Inc
258. Tower Labs Ltd.
259. Town Green Special Services District
260. Town of Branford
261. Town of Burlington
262. Town of East Hartford
263. Town of Fairfield
264. Town of Farmington
265. Town of Greenwich
266. Town of Trumbull
267. Town of Windsor
268. Town of Woodbridge
269. Travelers
270. Trinity College
271. Triumph
272. TSKP Studios
273. Tunxis Community College
274. U.S. Department of Housing and Urban Development
275. UConn Hartford
276. UConn Health Center
277. UConn Law School
278. Ulbrich Stainless Steels and Special Metals
279. United Bank
280. United Healthcare
281. United Illuminating
282. United States District Court: District of Connecticut
283. United Technologies Corporation
284. University of Bridgeport
285. University of Connecticut—Avery Point
286. University of Connecticut—Storrs
287. University of Connecticut—Stamford
288. University of Connecticut—Waterbury
289. University of Hartford
290. University of New Haven

291. University of Saint Joseph
292. University of St. Joseph School of Pharmacy
293. USI Consulting
294. U.S. Federal Highway Administration
295. Valley Transit District
296. Veterans Affairs Connecticut Healthcare System (Newington)
297. Veterans Affairs Connecticut Healthcare System (West Haven)
298. Voya
299. Washington Inventory Systems
300. Waste Management
301. Watch For Me CT
302. Waterbury Hospital
303. Watson Foods
304. Wesleyan University
305. West Hartford Health and Rehab
306. Western Connecticut State University
307. Western CT Council of Governments
308. Wiggin & Dana, LLP
309. Windham Region Transit District
310. Windham Regional Community Council
311. Windsor Health and Rehabilitation Center, LLC
312. Wiremold/Legrand
313. Workers' Compensation Commission
314. Yale University
315. Yale-New Haven Hospital
316. YMCA Greater Hartford