



TranSystems

EXPERIENCE | Transportation

CRCOG

CAPITOL REGION
COUNCIL OF GOVERNMENTS

Public Information Meeting # 2 July 28, 2021



Presentation Outline

- ▶ Introduction
- ▶ Assessment of Existing Conditions
- ▶ Assessment of Future Conditions
- ▶ Alternatives Analysis and Recommendations
- ▶ Next Steps

Introduction



Introduction

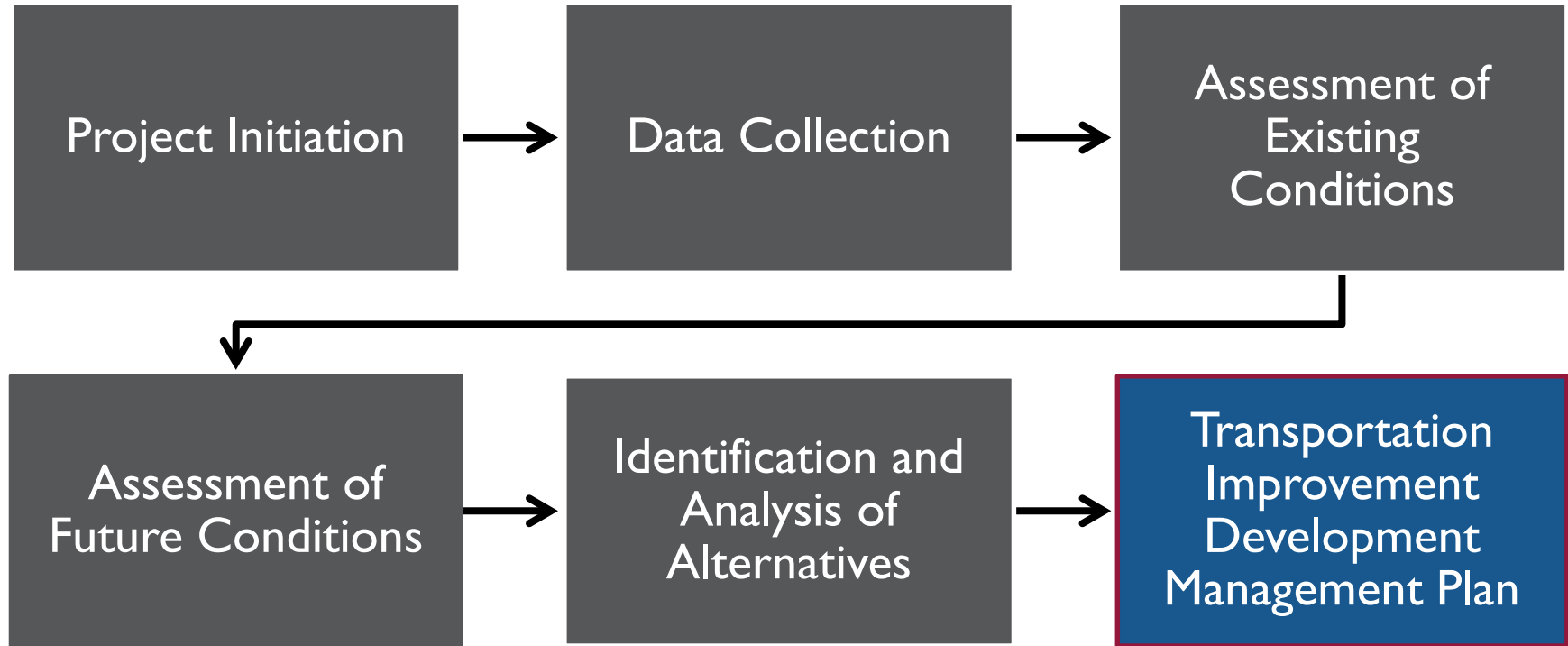
- ▶ Route 5 Corridor Study
 - Evaluate safety, congestion, and transit/bike/ped mobility
 - Assess travel demand growth for a multi-modal corridor to service the future land use vision and recommendations



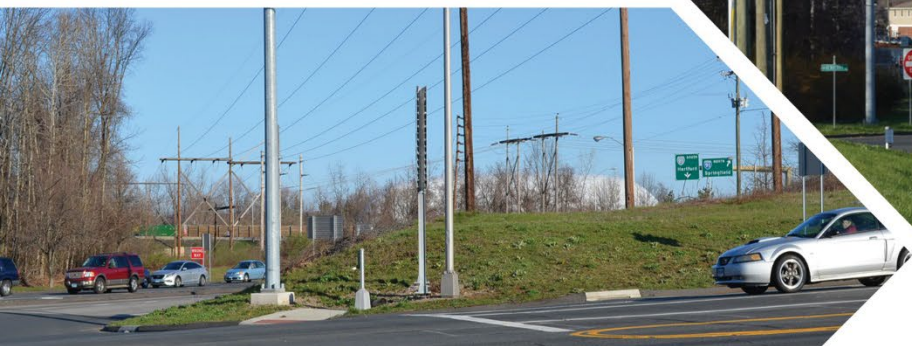
Schedule



Planning Process



Existing Conditions Analysis



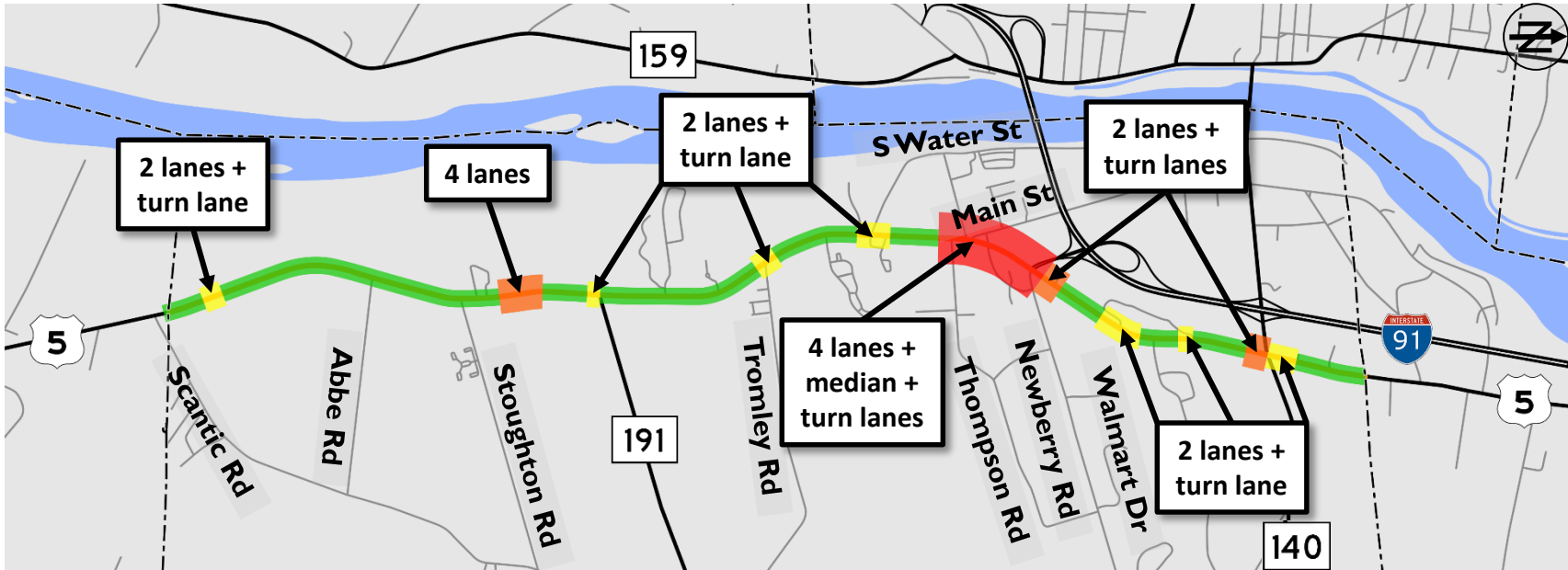
Existing Conditions Analysis

► Route 5 Study Area within East Windsor



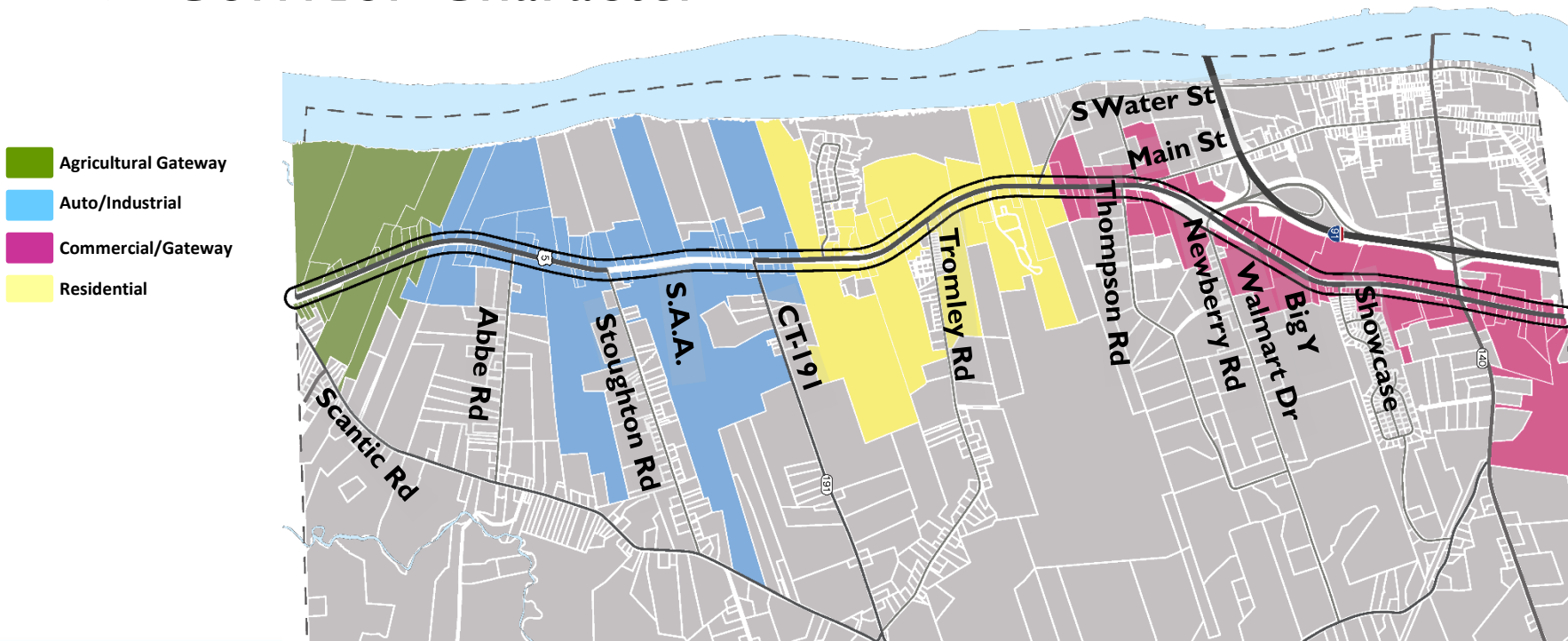
Existing Conditions Analysis

► Lane Configuration



Existing Conditions Analysis

► Corridor Character



Existing Conditions Analysis

► Traffic Operations - PM

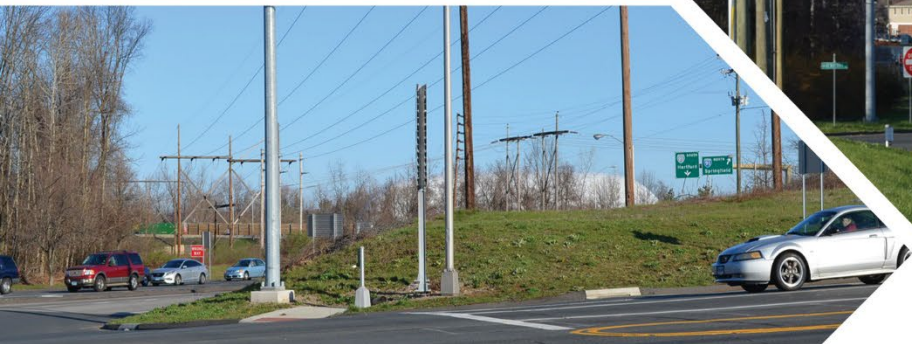


Existing Conditions Analysis

► Crash Rate on Segments (crashes per 100 million vehicle-miles)



Future Conditions Assessment



Process

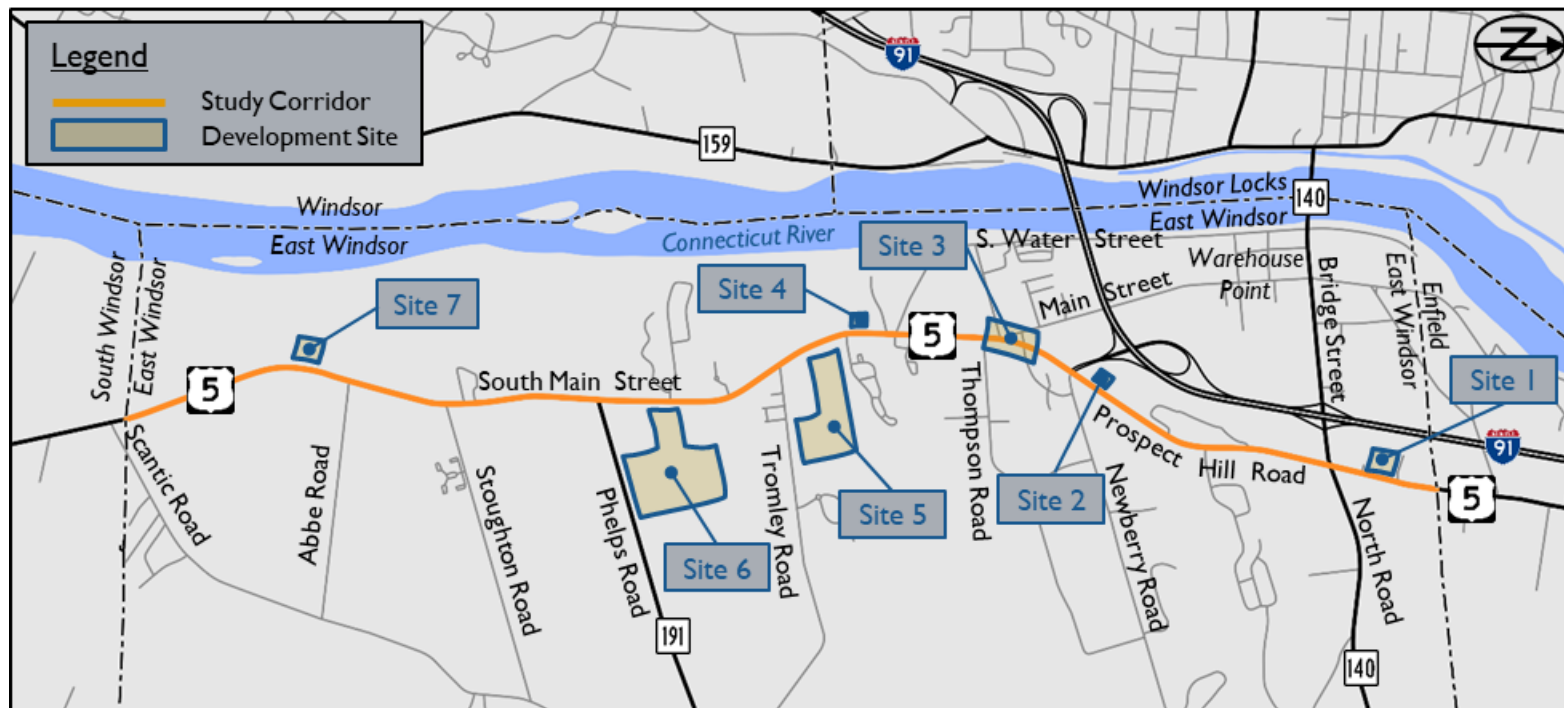
- ▶ Identify likely and potential developments
- ▶ Assess traffic demand impact
- ▶ Calculate resulting operations



Changes in Traffic Operations (Base)

Route 5 Corridor Study Intersection	Level of Service			
	Weekday AM		Weekday PM	
	Existing	Future Build	Existing	Future Build
Route 5 @ Route 140 (Bridge Street / North Road)	D	D	D	F
Route 5 @ Cinema Driveway	A	B	A	B
Route 5 @ Big Y Driveway	A	A	A	B
Route 5 @ Walmart Driveway	B	A	B	B
Route 5 @ I-91 Exit 44 Ramps & Newberry Road	E	D	E	F
Route 5 @ Main Street	B	B	B	B
Route 5 @ Thompson Road	B	B	B	B
Route 5 @ South Water Street	B	C	B	E
Route 5 @ Tromley Road	E	D	C	D
Route 5 @ Route 191 (Phelps Road)	B	A	B	C
Route 5 @ Southern Auto Auction	A	A	A	A
Route 5 @ Stoughton Road	A	A	A	B
Route 5 @ Abbe Road	A	B	A	B
Route 5 @ Scantic Road	B	B	B	A

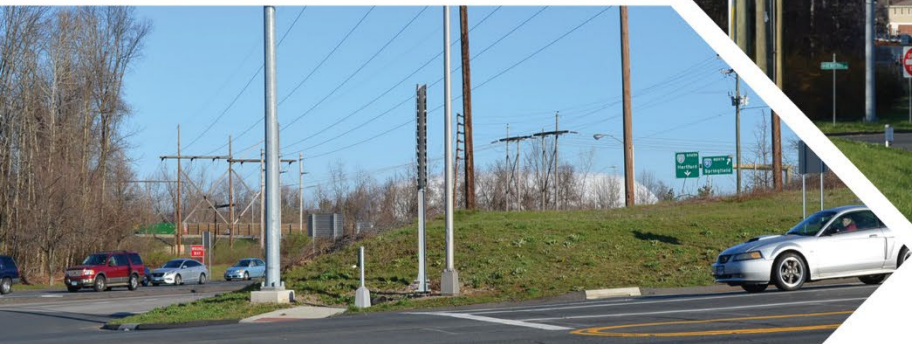
Proposed Land Use Changes



Changes in Traffic Operations (Build)

Route 5 Corridor Study Intersection	Level of Service			
	Weekday AM		Weekday PM	
	Existing	Future Base	Existing	Future Base
Route 5 @ Route 140 (Bridge Street / North Road)	D	E	D	F
Route 5 @ Cinema Driveway	A	A	A	B
Route 5 @ Big Y Driveway	A	A	A	A
Route 5 @ Walmart Driveway	B	A	B	B
Route 5 @ I-91 Exit 44 Ramps & Newberry Road	E	D	E	F
Route 5 @ Main Street	B	B	B	C
Route 5 @ Thompson Road	B	B	B	B
Route 5 @ South Water Street	B	F	B	F
Route 5 @ Tromley Road	E	F	C	F
Route 5 @ Route 191 (Phelps Road)	B	C	B	E
Route 5 @ Southern Auto Auction	A	A	A	A
Route 5 @ Stoughton Road	A	B	A	D
Route 5 @ Abbe Road	A	C	A	D
Route 5 @ Scantic Road	B	B	B	A

Alternatives & Recommendations



Vision, Goals and Objectives

Create a multimodal transportation system that supports *continued social and economic growth* in the Route 5 corridor.

Goals:

- ▶ Ensure *safe and consistent* vehicular, pedestrian and bicyclist *traffic flow and access*
- ▶ Establish bicyclist, pedestrian and transit *options* to *enhance mobility* choices by providing *equitable levels of access* to affordable and reliable transportation

Objectives

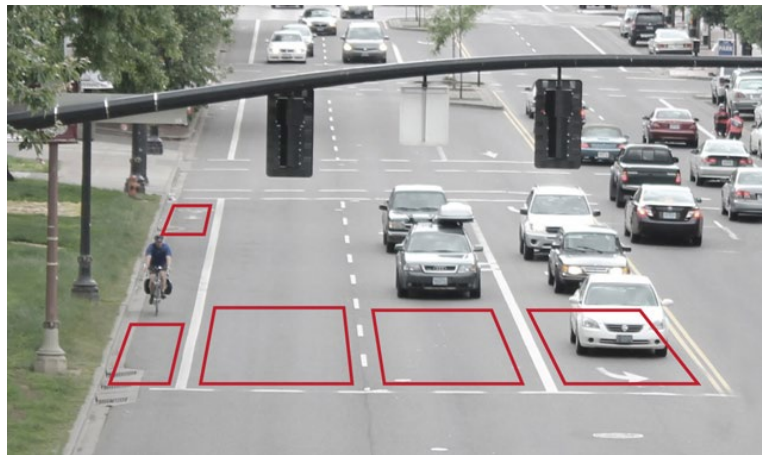
- ▶ Provide *turn lanes* at all intersections on Route 5
- ▶ Provide *LOS D or better* at all signalized intersections
- ▶ *Minimize queues* between intersections
- ▶ Provide *transit service* to key employment sites in the corridor
- ▶ Provide *bicyclist and pedestrian facilities* on Route 5 on at least one side of the street

Corridor-Wide Topics

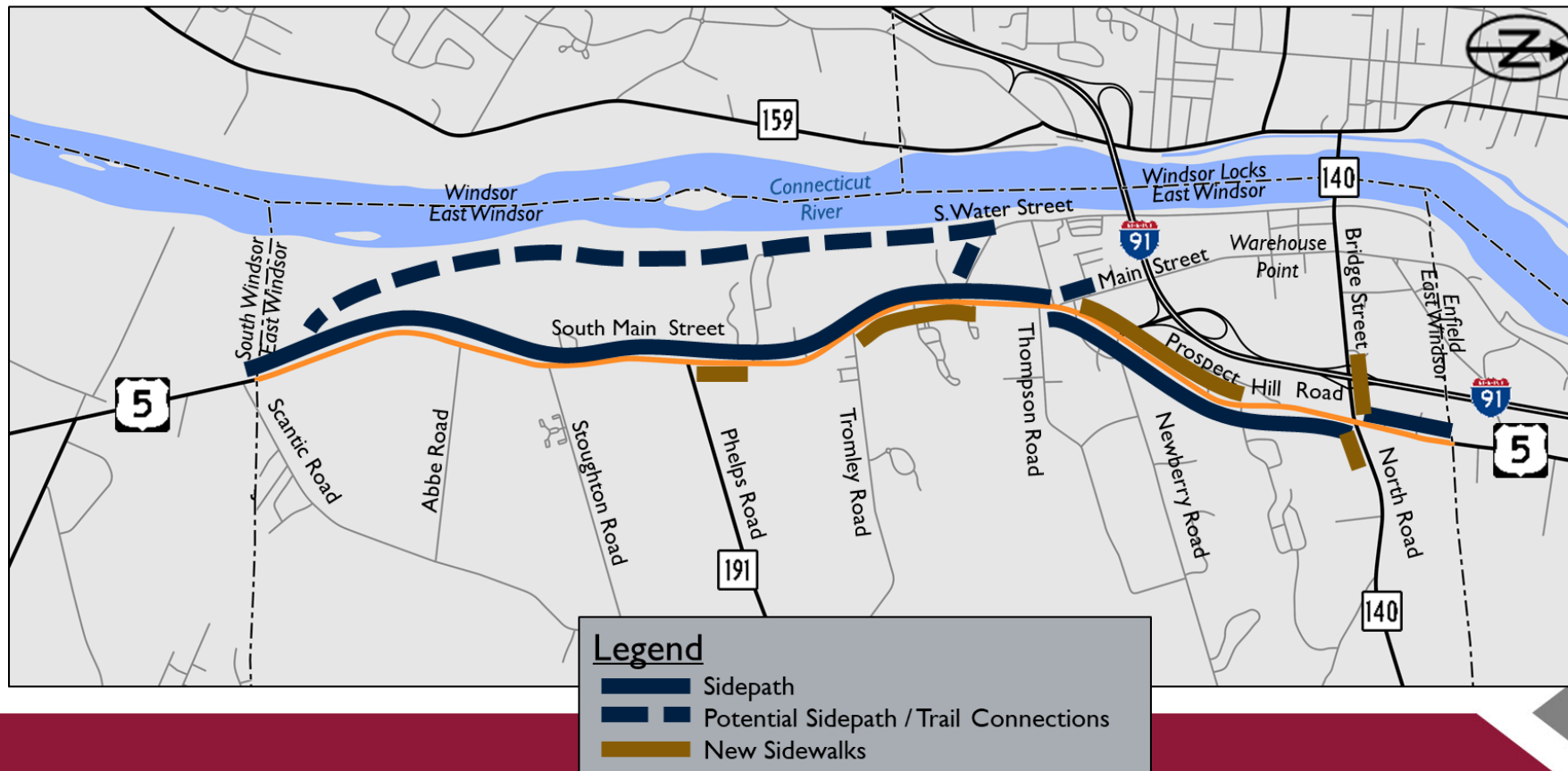
- ▶ Signal Infrastructure Enhancements
- ▶ Bicyclist / Pedestrian
- ▶ Transit

Signal Progression / Technology Upgrades

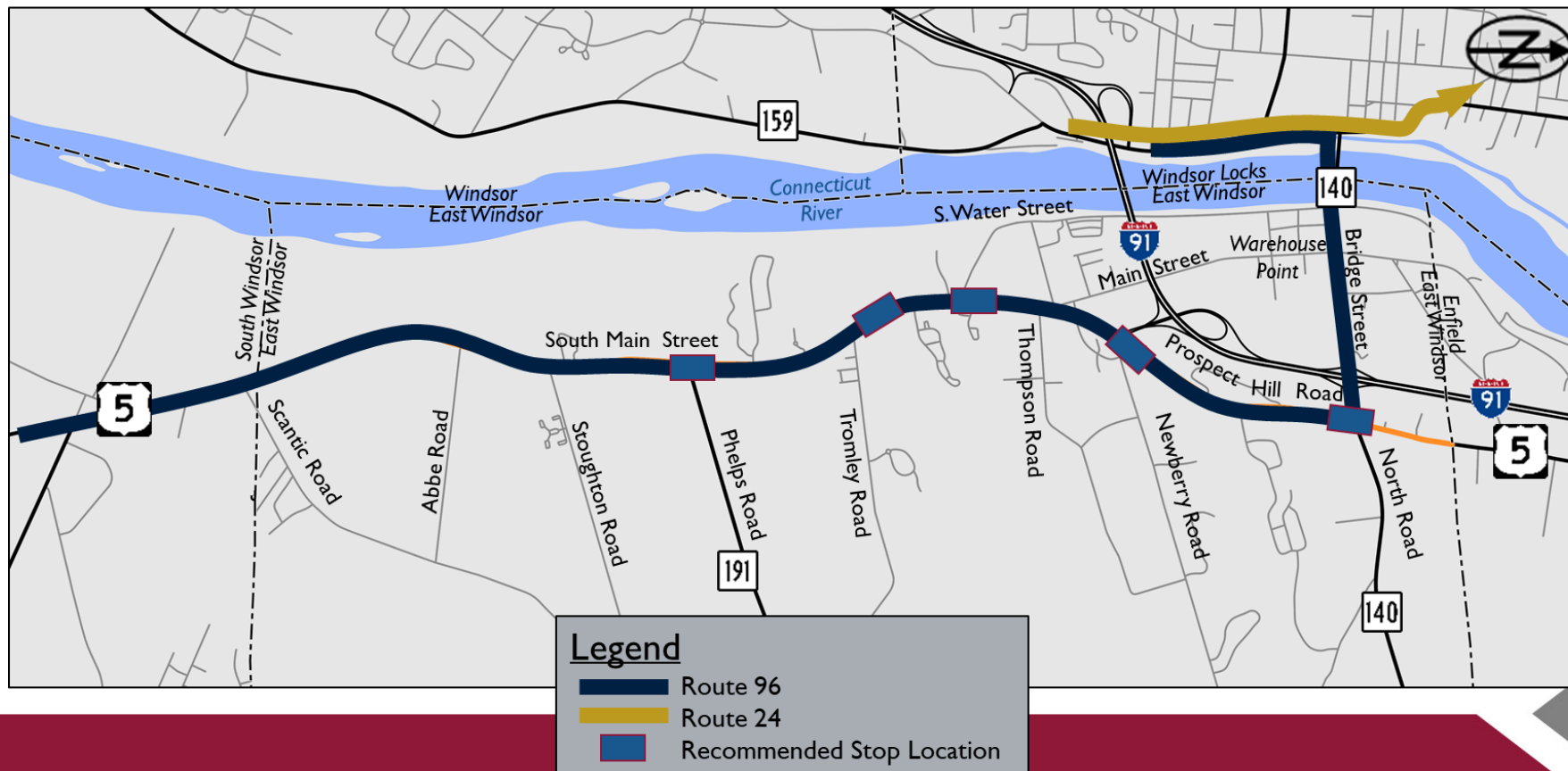
- ▶ Phasing / coordination
- ▶ Modernized detection / signal system
- ▶ Passing / turn lanes as needed to ensure consistent speeds



Bicyclist / Pedestrian Recommendations



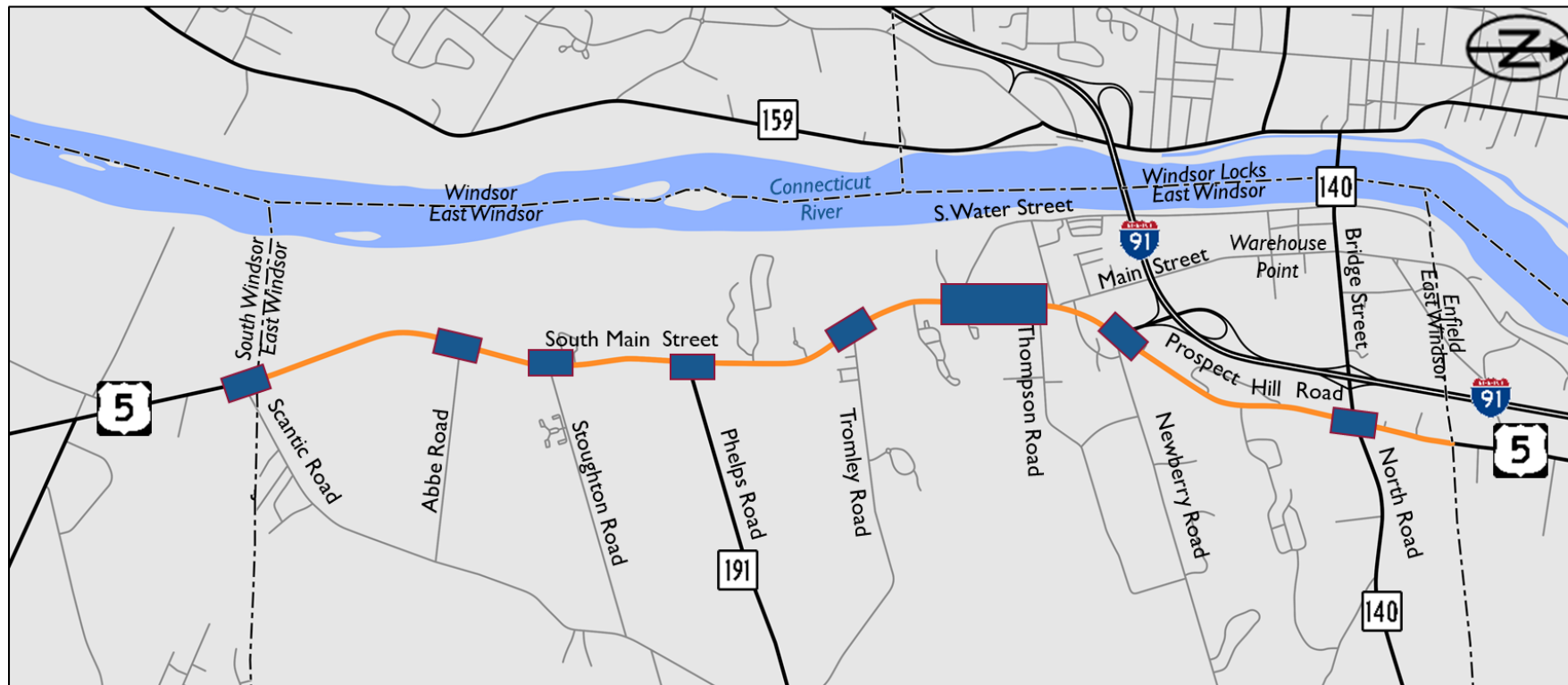
Transit Recommendations



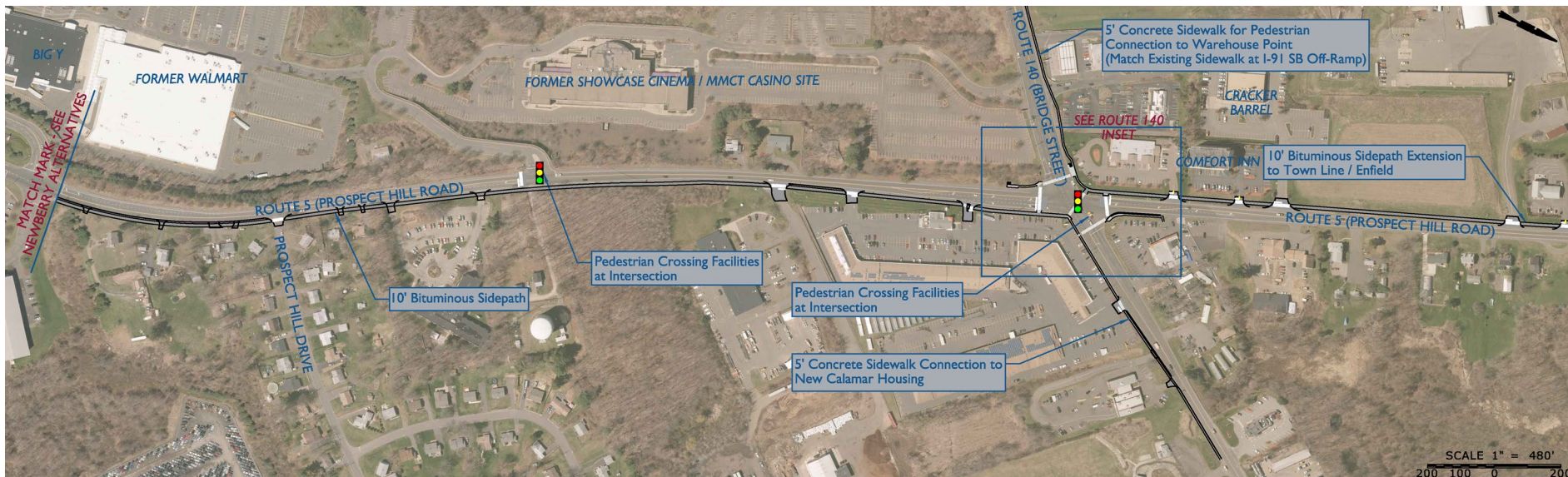
Spot Improvements / Implementation

- ▶ Near-Term
- ▶ Mid-Term
- ▶ Long-Term

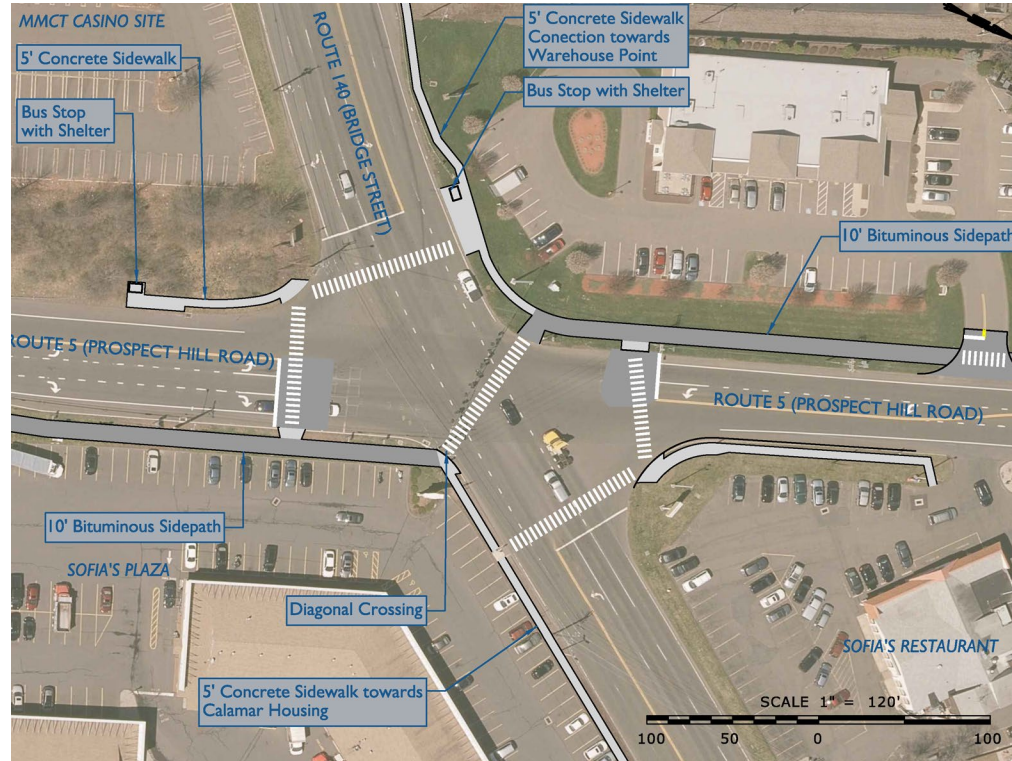
Near-Term Improvements



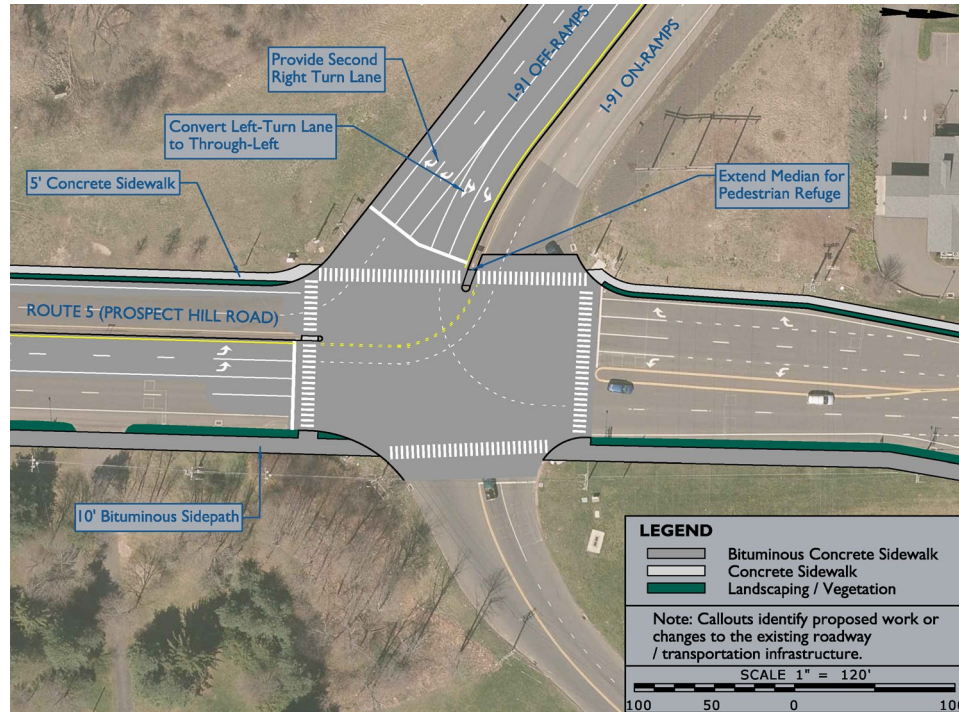
Sidewalk and Sidepath Near Route 140



Sidewalk and Sidepath Near Route 140



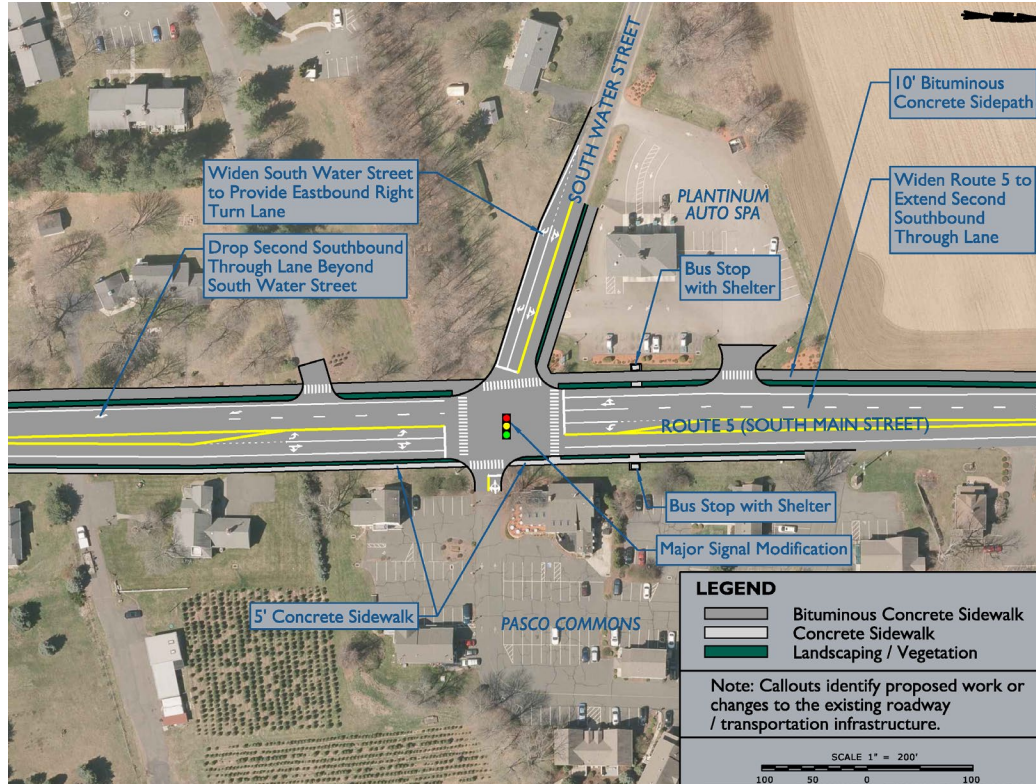
Operational Improvements at Newberry



Extend Second Southbound Lane



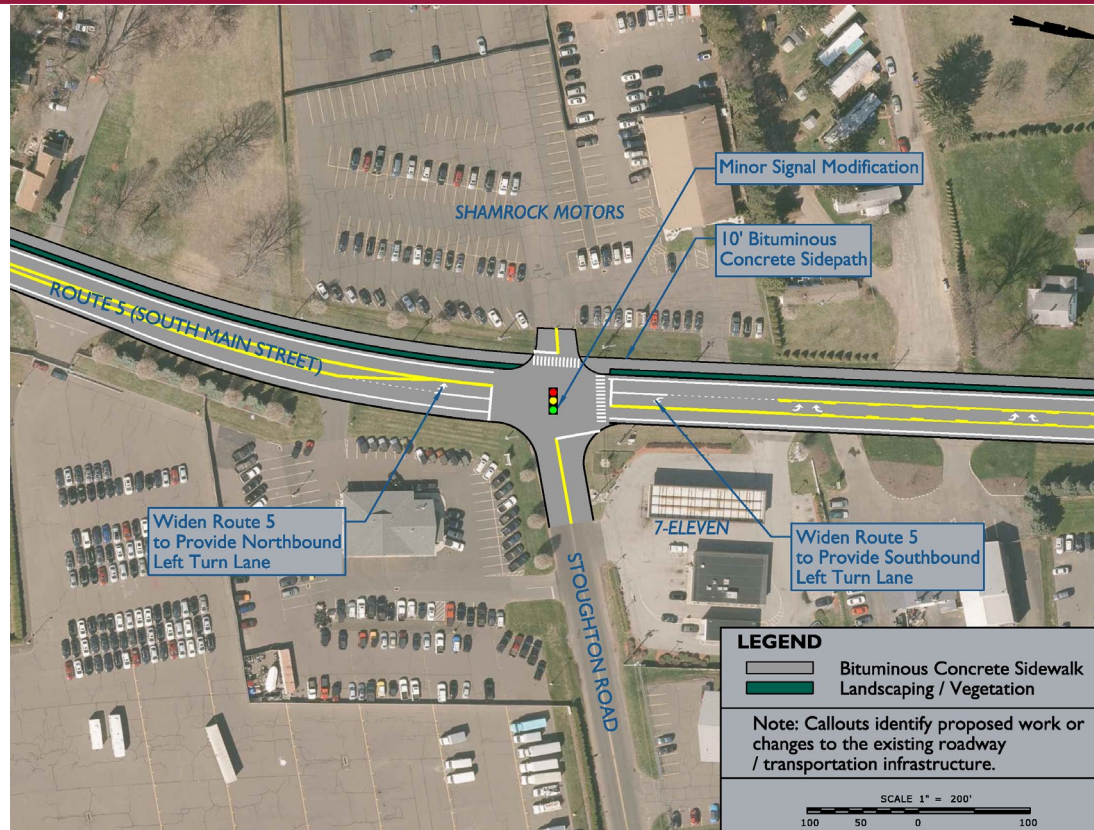
Extend Second Southbound Lane



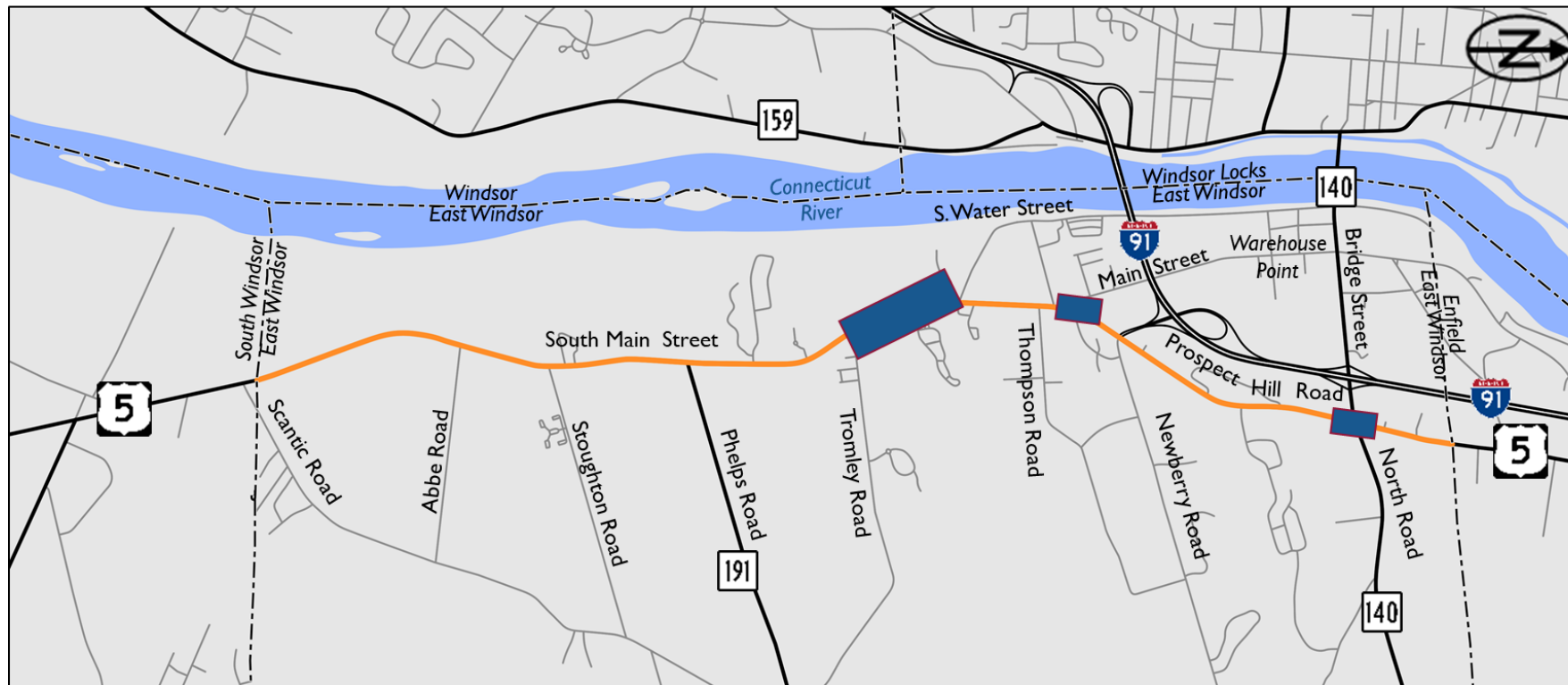
Road Diet near SAA



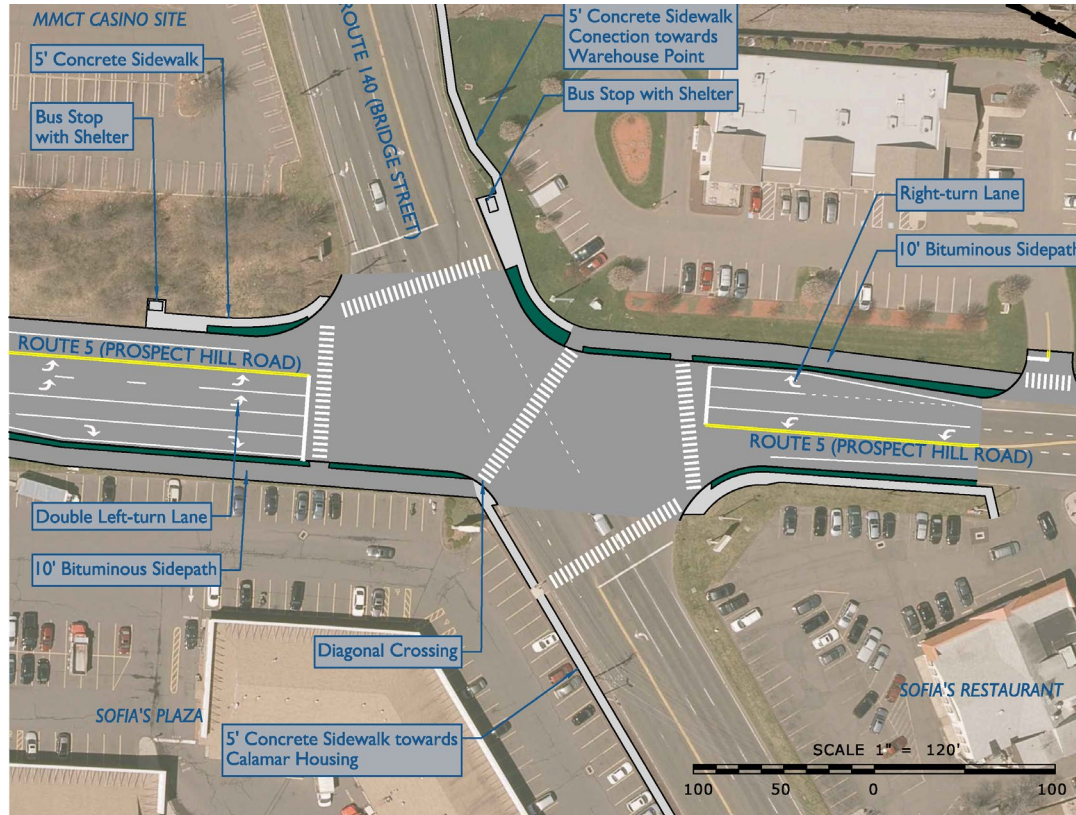
Add Turn Lanes



Mid-Term Improvements



Add Capacity at Route 140



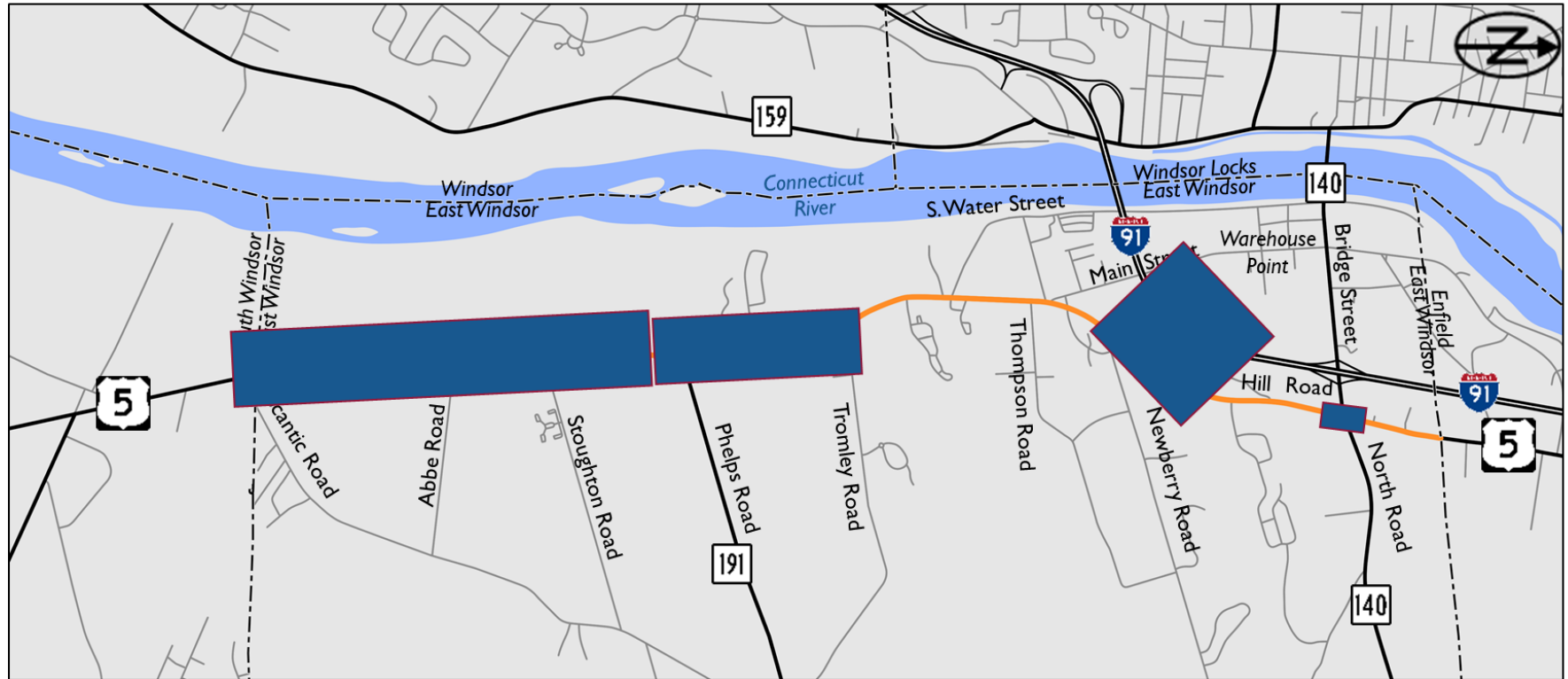
Realign Main Street



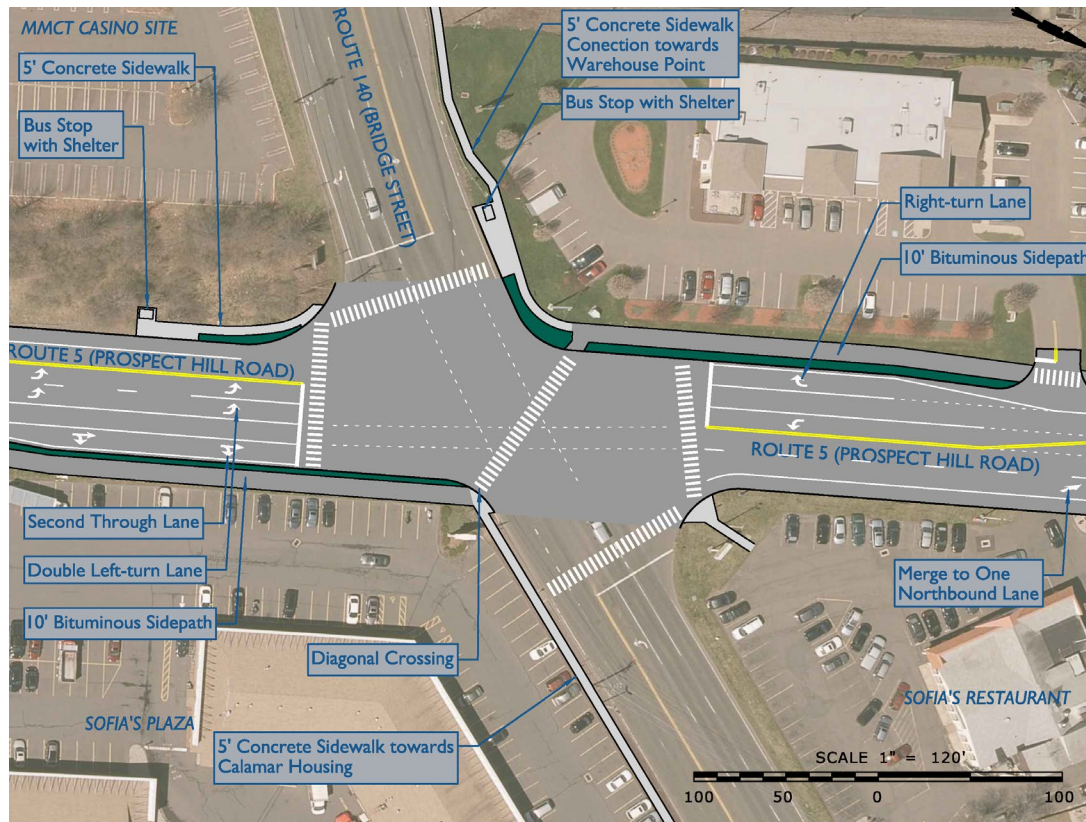
5-lane Section: Thompson to Tromley



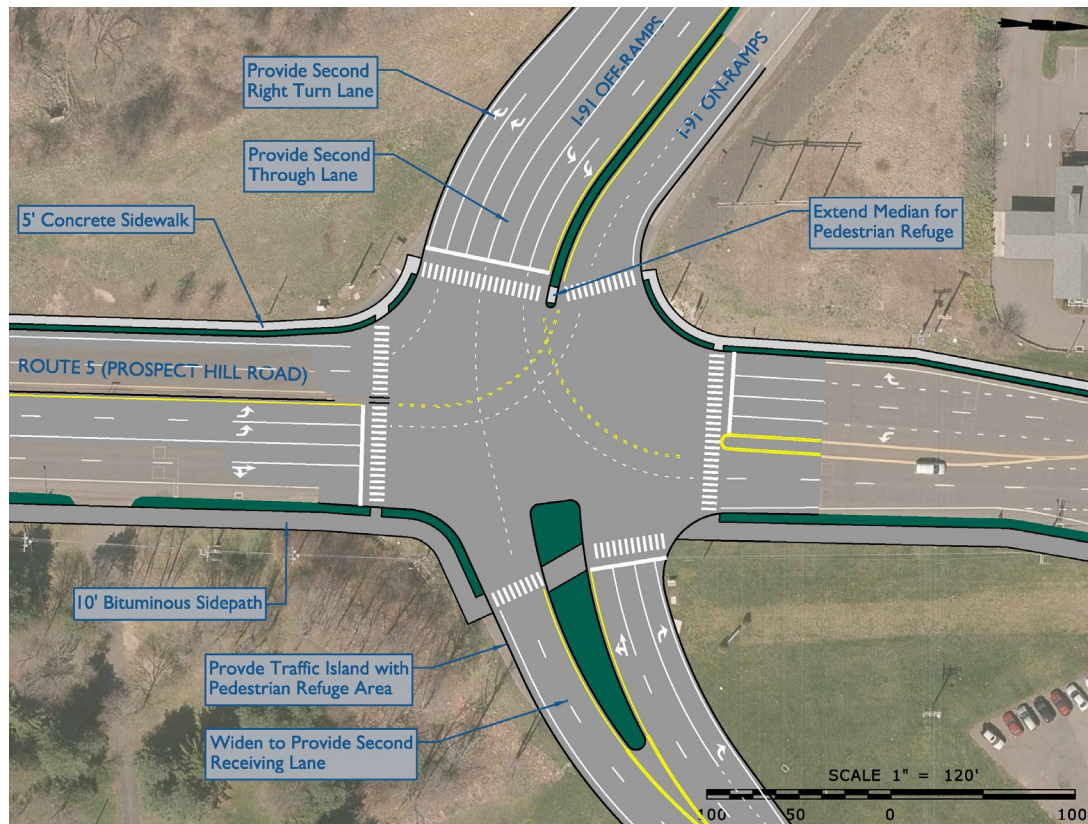
Long-Term Improvements



Add Capacity at Route 140



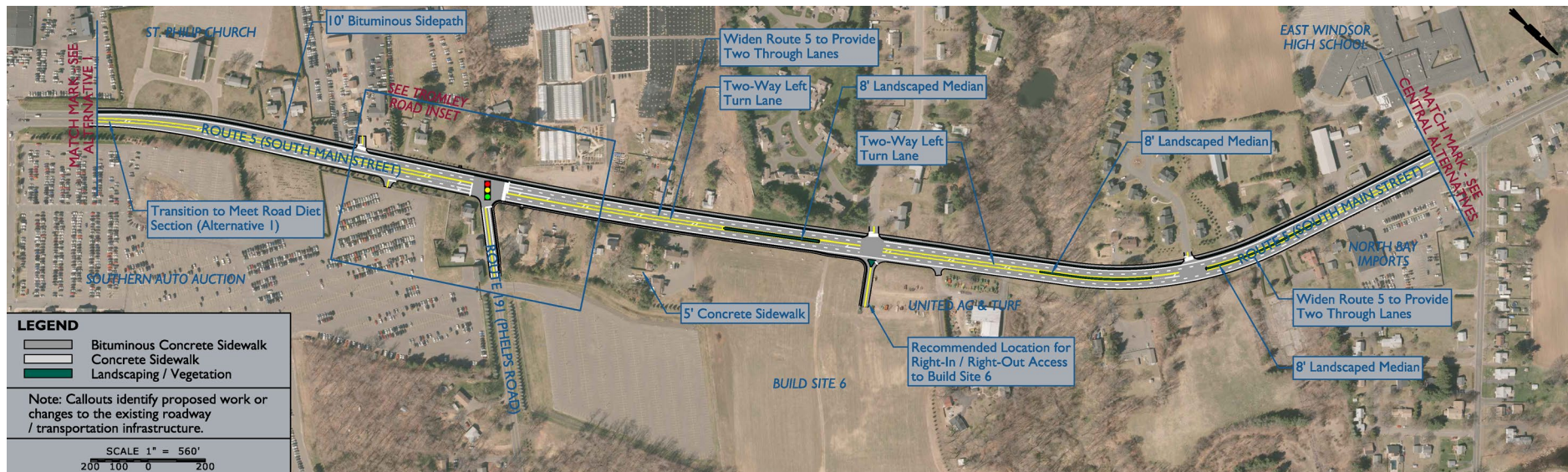
Add Capacity at Newberry Road



Study Interchange Reconfiguration



5-lane Section: Tromley to Phelps



5-lane Section: Phelps to S. Windsor



Implementation / Funding

- ▶ Near-Term
 - Total cost (2020 \$) - \$6.2M
- ▶ Mid-Term
 - Total cost (2030 \$) - \$14.2M
- ▶ Long-Term
 - Total cost (2040 \$) - \$24.3M

Next Steps

- ▶ Report Posted with 30-Day Comment Period
- ▶ Town Council Endorsement
- ▶ CRCOG Policy Board Endorsement
- ▶ CRCOG / Town Funding Pursuit
 - Enjoy updated signals!
 - CMAQ / LOTCIP / STP-Urban
 - Transportation Alternatives

Please provide your feedback!

- ▶ <https://crcog.org/2018/05/route-5-east-windsor-corridor-study/>

Thank you for your time!



Any questions?