

DRAFT



BIG Y

FORMER WALMART

FORMER SHOWCASE CINEMA / MMCT CASINO SITE

MATCH MARK - SEE NEWBERRY SECTION

MATCH MARK - SEE SHEET 2

ROUTE 5 (PROSPECT HILL ROAD)

PROSPECT HILL DRIVE

Approximate Property Lines

SCALE 1" = 150'  
80 40 0 80





DRAFT

I-91 NB OFF-RAMP

I-91 NB ON-RAMP

ROUTE 140 (BRIDGE STREET)

CRACKER  
BARREL

COMFORT INN

ROUTE 5 (PROSPECT HILL ROAD)

SOFIA'S PLAZA

ROUTE 140 (NORTH ROAD)

SCALE 1" = 150'  
80 40 0 80

Route 5 Corridor Study  
Existing Conditions  
North - Sheet 2

MATCH MARK - SEE ALTERNATIVE 2 SHEET 1



Legend:

- Widened Pavement
- Existing Pavement / Bituminous Sidewalk
- Concrete Sidewalk
- Landscaping



Note: Callouts indicate proposed changes in lane use and configuration for this alternative. Other movements match existing conditions. See Existing Conditions drawings for additional details.



**Legend:**

- Widened Pavement
- Existing Pavement / Bituminous Sidewalk
- Concrete Sidewalk
- Landscaping



Note: Callouts indicate proposed changes in lane use and configuration for this alternative. Other movements match existing conditions. See Existing Conditions drawings for additional details.



Legend:

- Widened Pavement
- Existing Pavement / Bituminous Sidewalk
- Concrete Sidewalk
- Landscaping

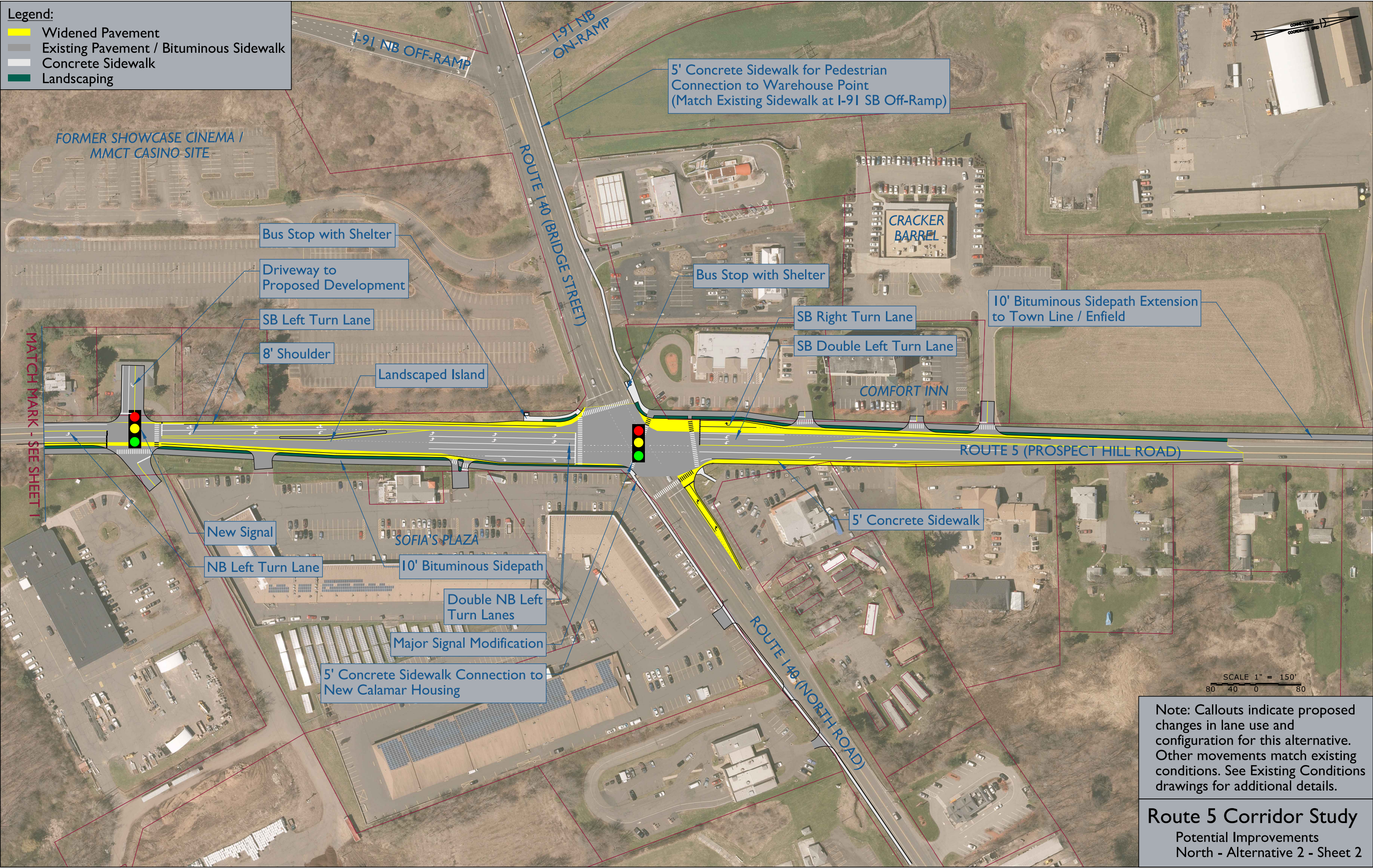


Note: Callouts indicate proposed changes in lane use and configuration for this alternative. Other movements match existing conditions. See Existing Conditions drawings for additional details.



**Legend:**

- Widened Pavement
- Existing Pavement / Bituminous Sidewalk
- Concrete Sidewalk
- Landscaping



Note: Callouts indicate proposed changes in lane use and configuration for this alternative. Other movements match existing conditions. See Existing Conditions drawings for additional details.



**Legend:**

- Widened Pavement
- Existing Pavement / Bituminous Sidewalk
- Concrete Sidewalk
- Landscaping



SCALE 1" = 150'

80 40 0 80

Note: Callouts indicate proposed changes in lane use and configuration for this alternative. Other movements match existing conditions. See Existing Conditions drawings for additional details.







DRAFT

CONNECTICUT  
COORDINATE GRID

CROSSROADS CATHEDRAL  
SITE

BIG Y

FORMER WALMART

MATCH MARK - SEE SHEET 1

ROUTE 5 (PROSPECT HILL ROAD)

MATCH MARK - SEE NORTH SECTION

Approximate Property  
Lines

WALMART

SCALE 1" = 150'  
80 40 0 80

Route 5 Corridor Study  
Existing Conditions  
Newberry - Sheet 2

















Note: Callouts indicate proposed changes in lane use and configuration for this alternative. Other movements match existing conditions. See Existing Conditions drawings for additional details.



**Legend:**

- Widened Pavement
- Existing Pavement / Bituminous Sidewalk
- Concrete Sidewalk
- Landscaping



Note: Callouts indicate proposed changes in lane use and configuration for this alternative. Other movements match existing conditions. See Existing Conditions drawings for additional details.

**Route 5 Corridor Study**  
Potential Improvements  
Newberry - Alternative 5



DRAFT



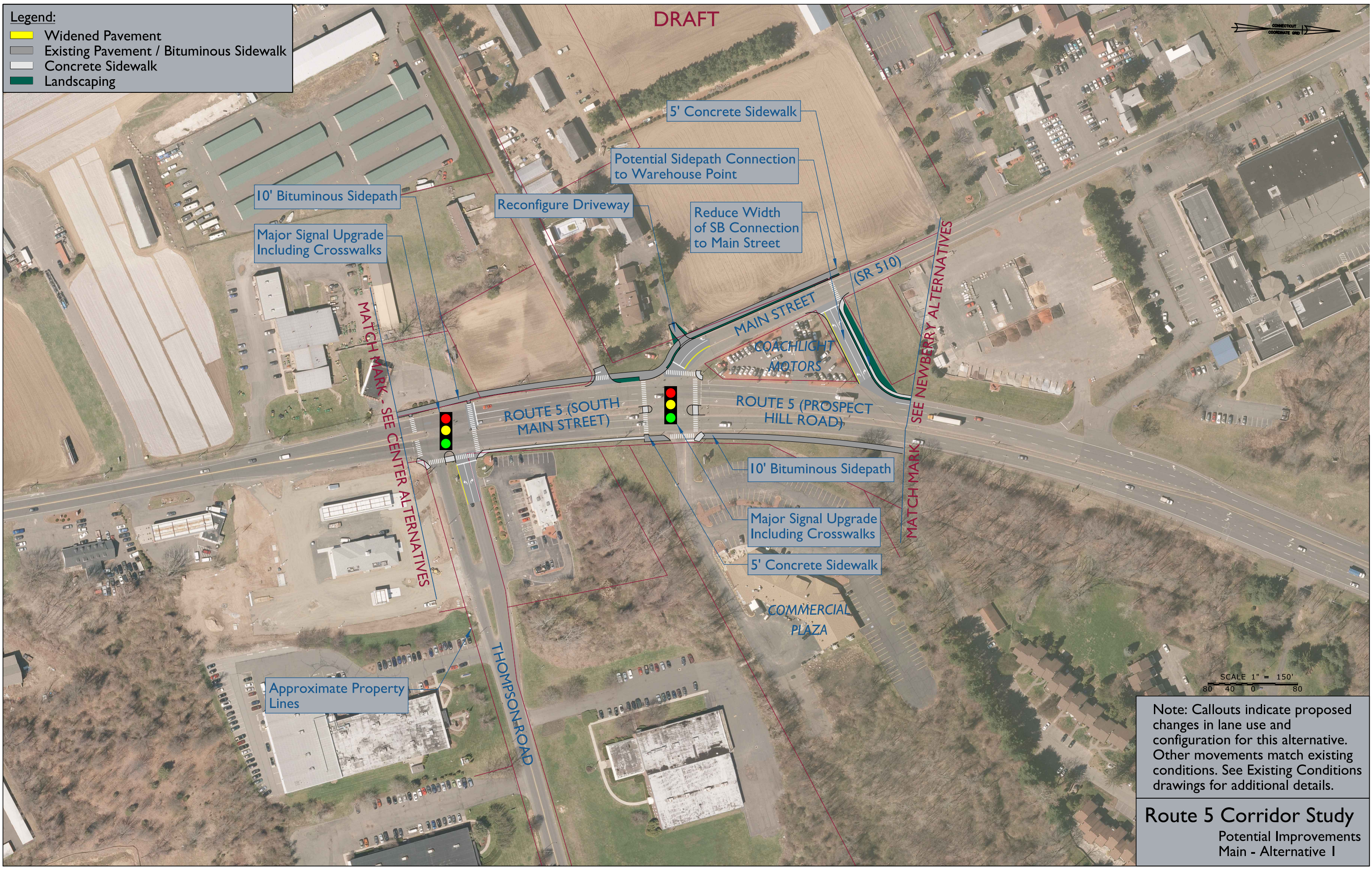
Approximate Property Lines



**Legend:**

- Widened Pavement
- Existing Pavement / Bituminous Sidewalk
- Concrete Sidewalk
- Landscaping

DRAFT



Note: Callouts indicate proposed changes in lane use and configuration for this alternative. Other movements match existing conditions. See Existing Conditions drawings for additional details.

### Route 5 Corridor Study

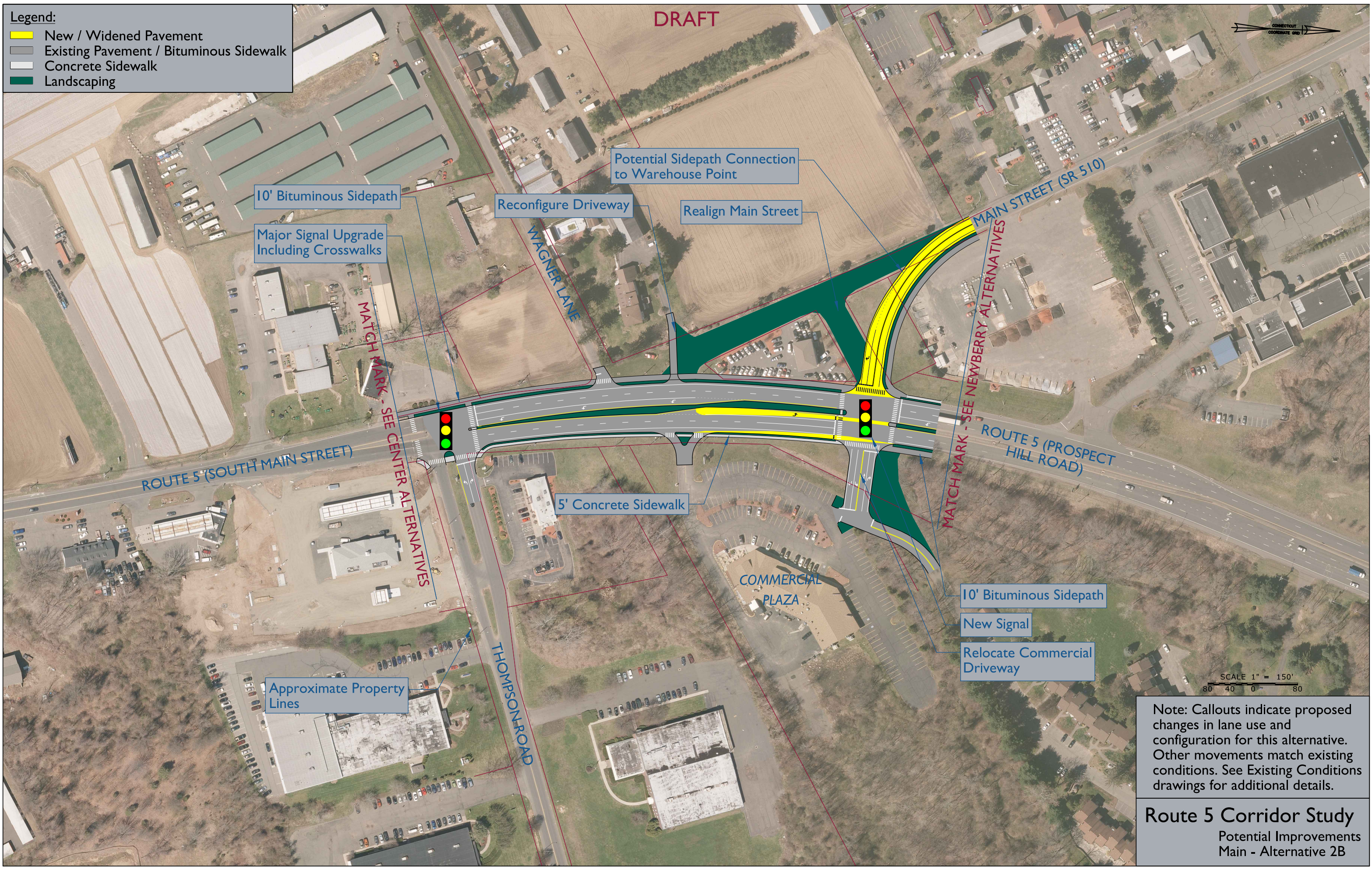
Potential Improvements  
Main - Alternative I



**Legend:**

- New / Widened Pavement
- Existing Pavement / Bituminous Sidewalk
- Concrete Sidewalk
- Landscaping

DRAFT



Note: Callouts indicate proposed changes in lane use and configuration for this alternative. Other movements match existing conditions. See Existing Conditions drawings for additional details.

## Route 5 Corridor Study

Potential Improvements  
Main - Alternative 2B



DRAFT

EAST WINDSOR  
HIGH SCHOOL

ROUTE 5 (SOUTH MAIN STREET)

TROMLEY ROAD

Approximate Property  
Lines

MATCH MARK - SEE SOUTH EXISTING CONDITIONS

MATCH MARK - SEE SHEET 2

SCALE 1" = 150'  
80 40 0 80





DRAFT

CONNECTICUT  
COORDINATE GRID

RIVERVIEW  
PLAZA

RIVERVIEW DRIVE

SOUTH WATER STREET

ROUTE 5 (SOUTH MAIN STREET)

MATCH MARK - SEE SHEET 1

REGINA DRIVE

MATCH MARK - SEE SHEET 3

Approximate Property  
Lines

PASCO  
COMMONS

SCALE 1" = 150'  
80 40 0 80

Route 5 Corridor Study  
Existing Conditions  
Center - Sheet 2





DRAFT

MATCH MARK - SEE SHEET 2

ROUTE 5 (SOUTH MAIN STREET)

Approximate Property Lines

MATCH MARK - SEE MAIN ALTERNATIVES

THOMPSON ROAD

SCALE 1" = 150'

Route 5 Corridor Study  
Existing Conditions  
Center - Sheet 3



Legend:

- Widened Pavement
- Existing Pavement / Bituminous Sidewalk
- Concrete Sidewalk
- Landscaping

DRAFT



Major Signal Upgrade  
Including Crosswalks

Approximate Property  
Lines

WB Right Turn Lane

5' Concrete Sidewalk

10' Bituminous Sidepath

Note: Callouts indicate proposed changes in lane use and configuration for this alternative. Other movements match existing conditions. See Existing Conditions Drawings for additional details.



Legend:

- Widened Pavement
- Existing Pavement / Bituminous Sidewalk
- Concrete Sidewalk
- Landscaping



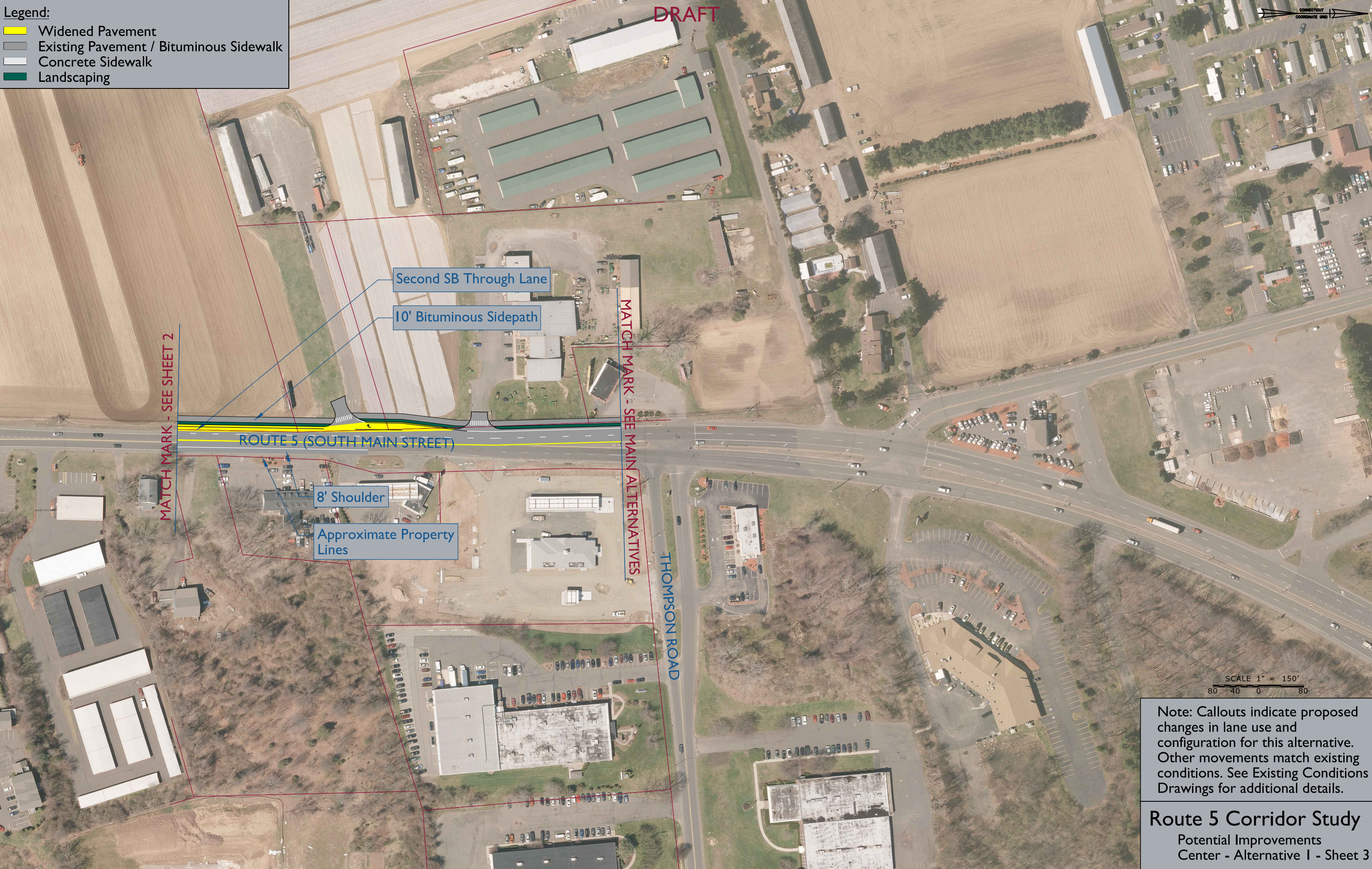
Note: Callouts indicate proposed changes in lane use and configuration for this alternative. Other movements match existing conditions. See Existing Conditions Drawings for additional details.



Legend:

- Widened Pavement
- Existing Pavement / Bituminous Sidewalk
- Concrete Sidewalk
- Landscaping

DRAFT



SCALE 1" = 150'

Note: Callouts indicate proposed changes in lane use and configuration for this alternative. Other movements match existing conditions. See Existing Conditions Drawings for additional details.



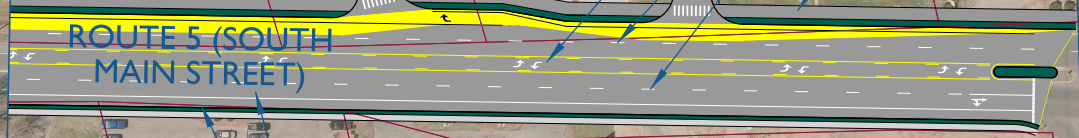
Legend:

- Widened Pavement
- Existing Pavement / Bituminous Sidewalk
- Concrete Sidewalk
- Landscaping

DRAFT



MATCH MARK - SEE SHEET 2



Two-Way Left Turn Lane

Two Through Lanes in Each Direction

10' Bituminous Sidepath

5' Concrete Sidewalk

Approximate Property Lines

MATCH MARK - SEE MAIN ALTERNATIVES

THOMPSON ROAD

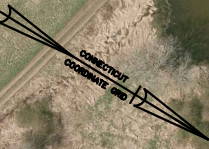
SCALE 1" = 150'

Note: Callouts indicate proposed changes in lane use and configuration for this alternative. Other movements match existing conditions. See Existing Conditions Drawings for additional details.



DRAFT

TOWN OF SOUTH WINDSOR  
TOWN OF EAST WINDSOR



ROUTE 5 (SOUTH MAIN STREET)

MATCH MARK - SEE SHEET 2

SCANTIC ROAD

NUTMEG  
RESTAURANT

HARKEN'S MARKET

Approximate Property  
Lines

SCALE 1" = 150'  
80 40 0 80

Route 5 Corridor Study  
Existing Conditions  
South - Sheet 1





DRAFT

CONNECTICUT  
COORDINATE GRID

MATCH MARK - SEE SHEET 1

ROUTE 5 (SOUTH MAIN STREET)

Approximate Property  
Lines

MATCH MARK - SEE SHEET 3

SCALE 1" = 150'  
80 40 0 80

Route 5 Corridor Study  
Existing Conditions  
South - Sheet 2



DRAFT



MATCH MARK - SEE SHEET 2

MATCH MARK - SEE SHEET 4

DUNKIN

ABBE ROAD

ROUTE 5 (SOUTH MAIN STREET)

Approximate Property Lines

SCALE 1" = 150'  
80' 40' 0' 80'









DRAFT

CONNECTICUT  
COORDINATE GRID

MATCH MARK - SEE SHEET 4

MATCH MARK - SEE SHEET 6

ROUTE 5 (SOUTH MAIN STREET)

PHEPS ROAD (ROUTE 191)

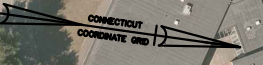
Approximate Property  
Lines

SCALE 1" = 150'  
80 40 0 80

Route 5 Corridor Study  
Existing Conditions  
South - Sheet 5



DRAFT



MATCH MARK - SEE SHEET 5

MATCH MARK - SEE CENTER EXISTING CONDITIONS

WINTON ROAD

MASONS BROOK LANE

ROUTE 5 (SOUTH MAIN STREET)

Approximate Property Lines

SCALE 1" = 150'



Legend:

- Widened Pavement
- Existing Pavement / Bituminous Sidewalk
- Concrete Sidewalk
- Landscaping



Note: Callouts indicate proposed changes in lane use and configuration for this alternative. Other movements match existing conditions. See Existing Conditions drawings for additional details.



Legend:

- Widened Pavement
- Existing Pavement / Bituminous Sidewalk
- Concrete Sidewalk
- Landscaping



Note: Callouts indicate proposed changes in lane use and configuration for this alternative. Other movements match existing conditions. See Existing Conditions drawings for additional details.



Legend:

- Widened Pavement
- Existing Pavement / Bituminous Sidewalk
- Concrete Sidewalk
- Landscaping



MATCH MARK - SEE SHEET 2

MATCH MARK - SEE SHEET 4

10' Bituminous Sidepath

SB Right and Left Turn Lanes

ROUTE 5 (SOUTH MAIN STREET)

NB Left Turn Lane

Major Signal Upgrade Including Crosswalks

ABBE ROAD

Approximate Property Lines

SCALE 1" = 150'

Note: Callouts indicate proposed changes in lane use and configuration for this alternative. Other movements match existing conditions. See Existing Conditions Drawings for additional details.



Legend:


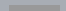
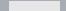

- Widened Pavement
- Existing Pavement / Bituminous Sidewalk
- Concrete Sidewalk
- Landscaping



Note: Callouts indicate proposed changes in lane use and configuration for this alternative. Other movements match existing conditions. See Existing Conditions drawings for additional details.



**Legend:**

-  Widened Pavement
-  Existing Pavement / Bituminous Sidewalk
-  Concrete Sidewalk
-  Landscaping

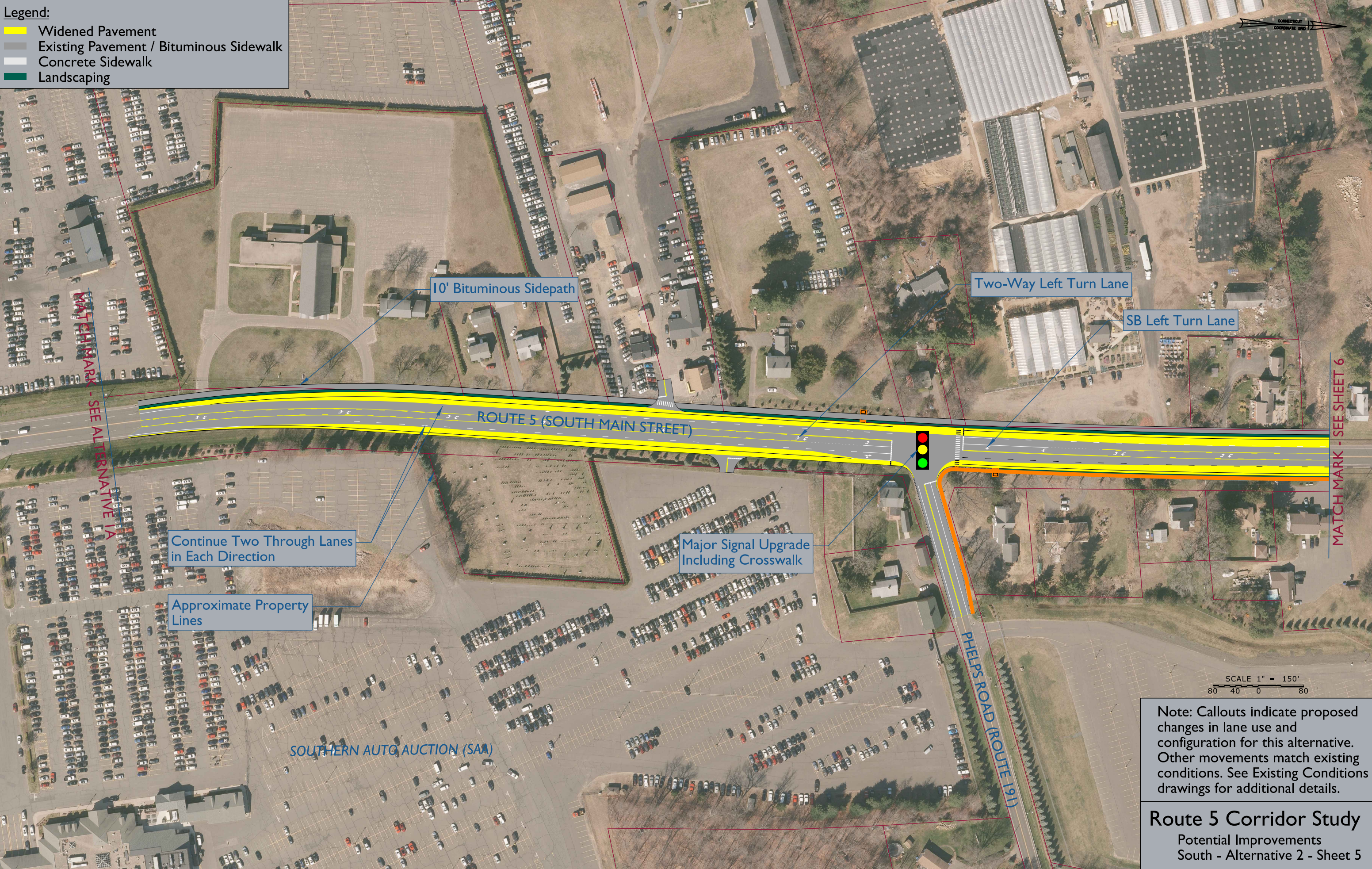


Note: Callouts indicate proposed changes in lane use and configuration for this alternative. Other movements match existing conditions. See Existing Conditions drawings for additional details.



Legend:

- Widened Pavement
- Existing Pavement / Bituminous Sidewalk
- Concrete Sidewalk
- Landscaping

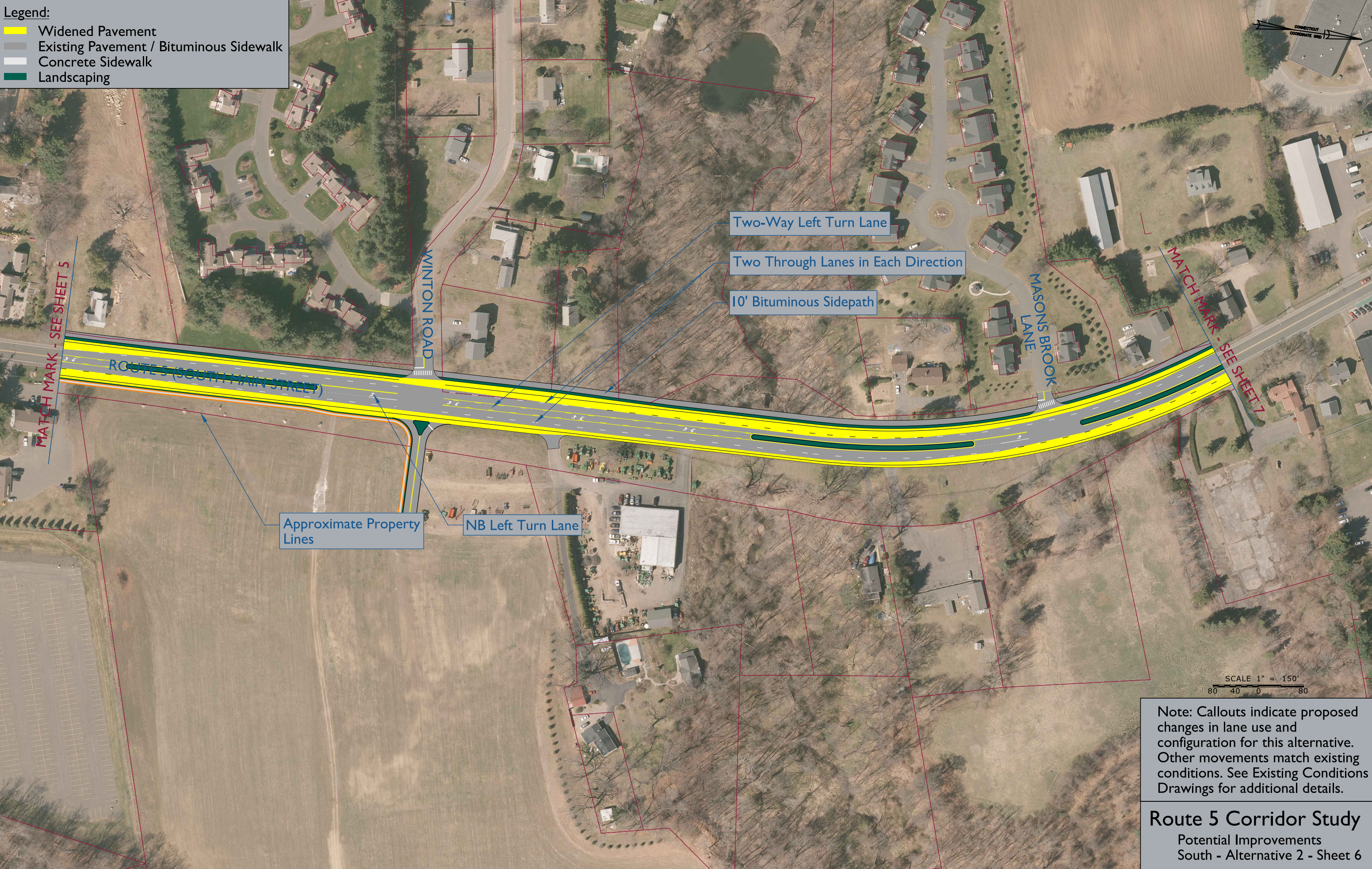


Note: Callouts indicate proposed changes in lane use and configuration for this alternative. Other movements match existing conditions. See Existing Conditions drawings for additional details.



Legend:

- Widened Pavement
- Existing Pavement / Bituminous Sidewalk
- Concrete Sidewalk
- Landscaping



Note: Callouts indicate proposed changes in lane use and configuration for this alternative. Other movements match existing conditions. See Existing Conditions Drawings for additional details.

**Route 5 Corridor Study**  
Potential Improvements  
South - Alternative 2 - Sheet 6



Legend:

- Widened Pavement
- Existing Pavement / Bituminous Sidewalk
- Concrete Sidewalk
- Landscaping



Note: Callouts indicate proposed changes in lane use and configuration for this alternative. Other movements match existing conditions. See Existing Conditions Drawings for additional details.



**Legend:**

- Widened Pavement
- Existing Pavement / Bituminous Sidewalk
- Concrete Sidewalk
- Landscaping



Note: Callouts indicate proposed changes in lane use and configuration for this alternative. Other movements match existing conditions. See Existing Conditions drawings for additional details.



Legend:

- Widened Pavement
- Existing Pavement / Bituminous Sidewalk
- Concrete Sidewalk
- Landscaping

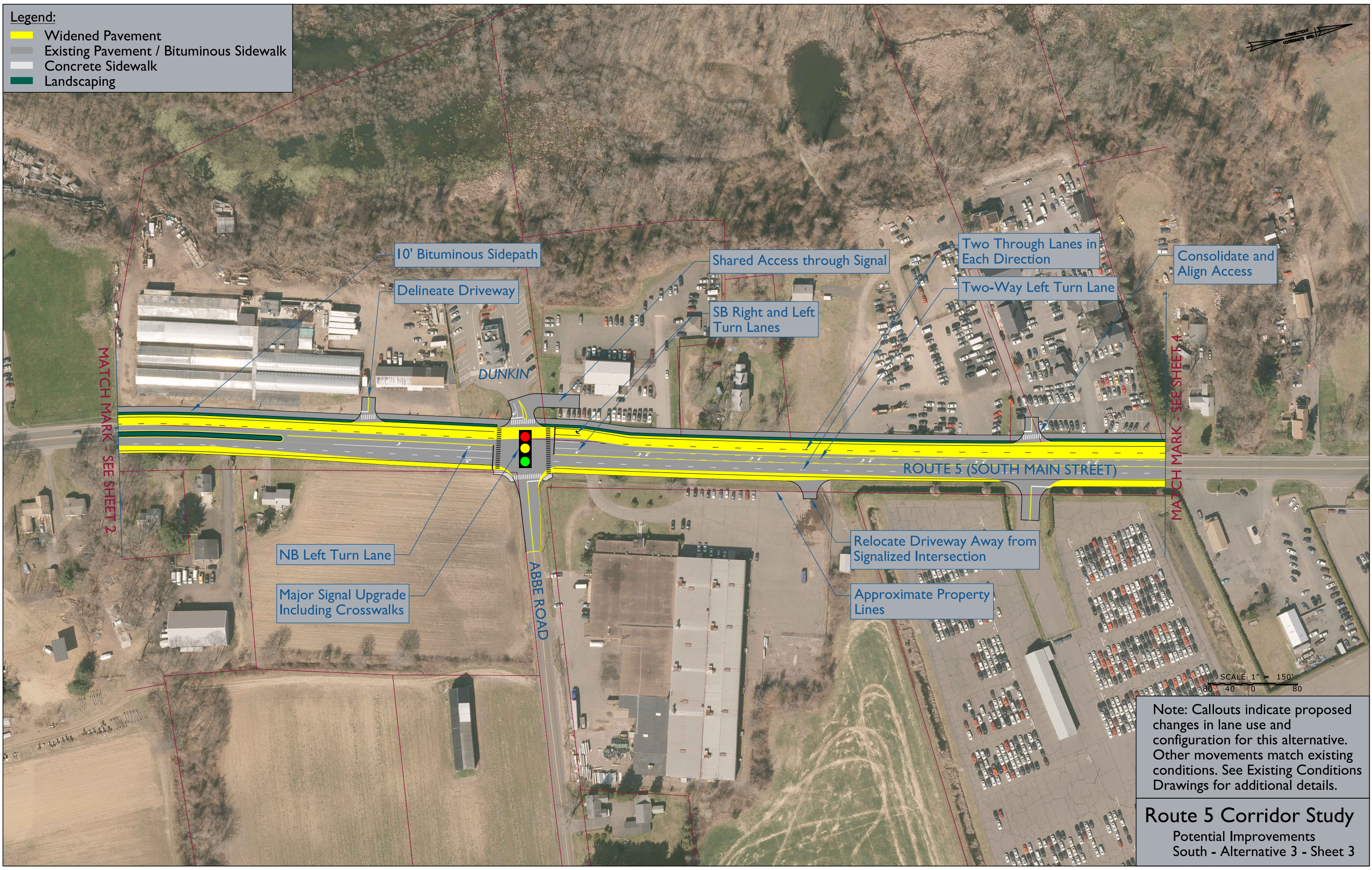


Note: Callouts indicate proposed changes in lane use and configuration for this alternative. Other movements match existing conditions. See Existing Conditions drawings for additional details.



**Legend:**

- Widened Pavement
- Existing Pavement / Bituminous Sidewalk
- Concrete Sidewalk
- Landscaping

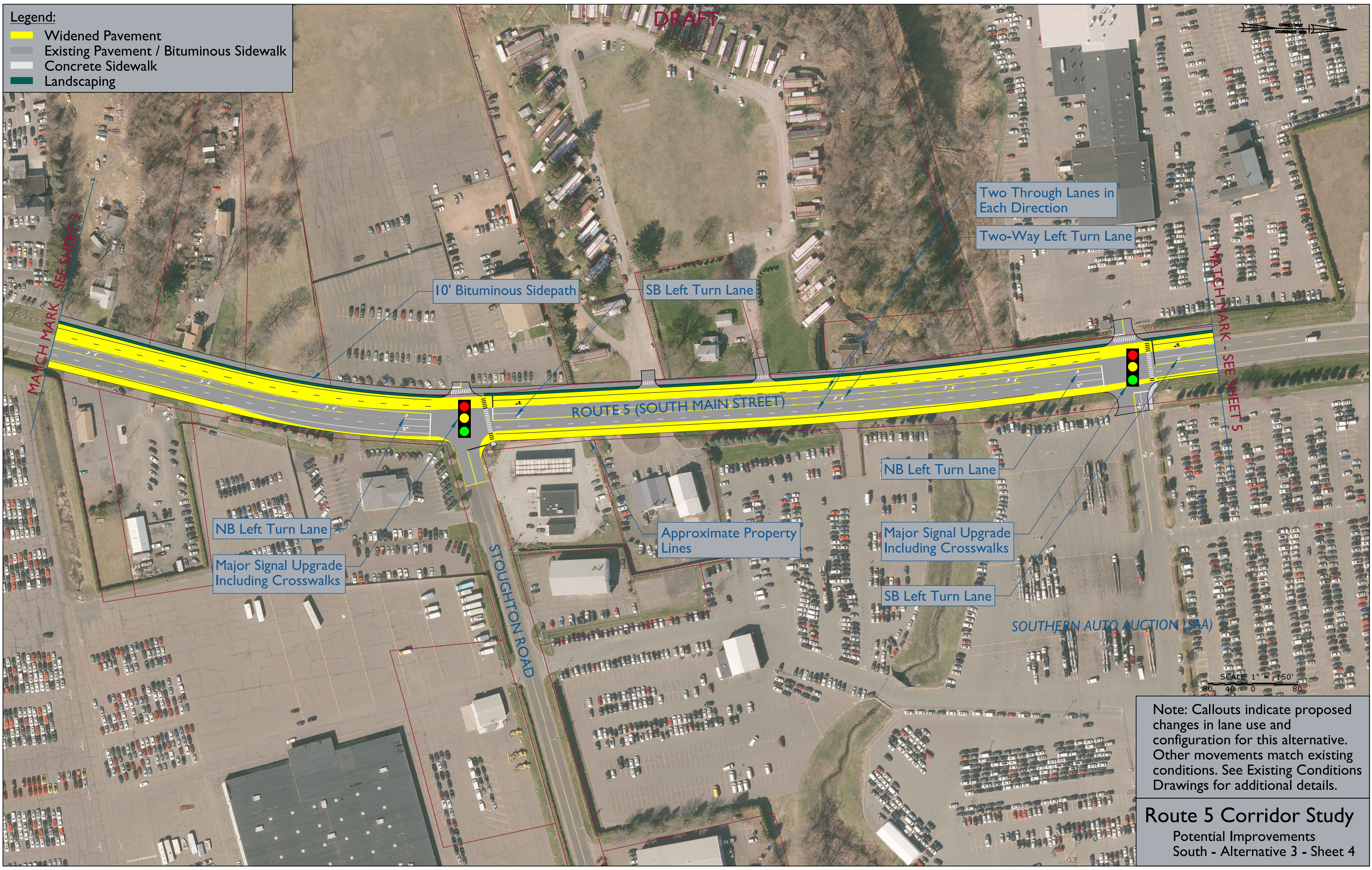


Note: Callouts indicate proposed changes in lane use and configuration for this alternative. Other movements match existing conditions. See Existing Conditions Drawings for additional details.



Legend:

- Widened Pavement
- Existing Pavement / Bituminous Sidewalk
- Concrete Sidewalk
- Landscaping



Note: Callouts indicate proposed changes in lane use and configuration for this alternative. Other movements match existing conditions. See Existing Conditions Drawings for additional details.



Legend:

- Widened Pavement
- Existing Pavement / Bituminous Sidewalk
- Concrete Sidewalk
- Landscaping



Note: Callouts indicate proposed changes in lane use and configuration for this alternative. Other movements match existing conditions. See Existing Conditions drawings for additional details.