

Advisory Committee Meeting #2

April 18, 2023

CAPITOL REGION
**EAST COAST
GREENWAY STUDY**

crcog.org/capitol-region-ecg-study/

Note: Meeting is recorded and will be posted online

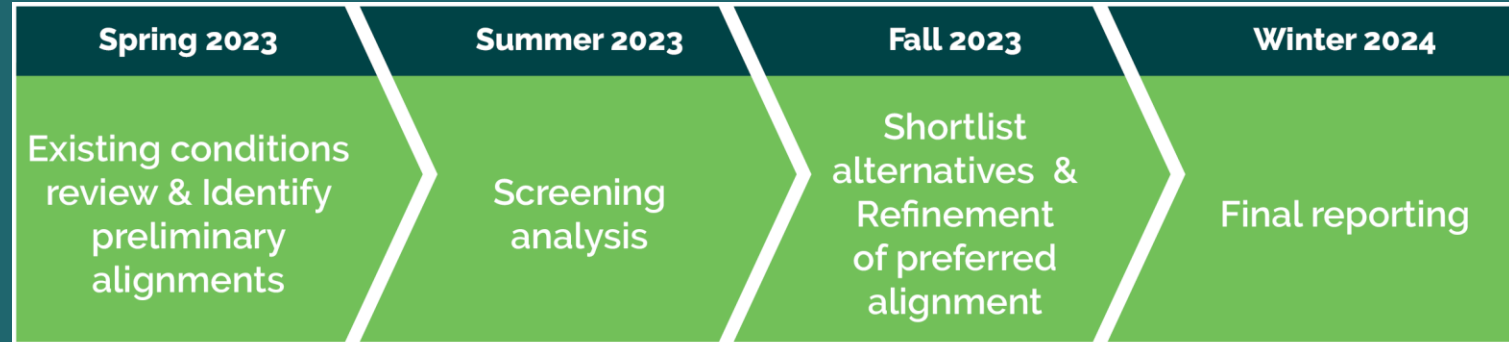


Agenda

- Project Schedule
- Simsbury Update
- Public Outreach Update
- Initial Alignment Ideas
- Screening Prioritization (Survey)
- Next Meetings and Next Steps
- Public Comment
- Workshop Discussion at Maps



Project Schedule



TASKS	2023												2024			
	JAN	FEB	MAR	APR	MAY	JUN	JUL	AUG	SEP	OCT	NOV	DEC	JAN	FEB	MAR	APR
Advisory Committee (6)		●		●		●		●			●		●		○	
Website Updates (6)		●		●		●		●			●		●		●	
Newsletters (3)			■					■						■		
Public Municipal Meetings (6)			●●●												●●●	
Public Workshops (3)				●●●												
Public Meetings (3)														●●●		
Survey								■	■	■						
Pop-ups (8)					●	●	●	●	●●●	●●						
Stakeholder Meetings and/or Walk-audits (6)					●●	●●	●●	●●								
Direct Municipal Meetings (6)						●●●				●●●						
CRCOG Committee Meetings (2)								●							●	
CTDOT Pitch Meeting													●			



Simsbury Update

Simsbury Update

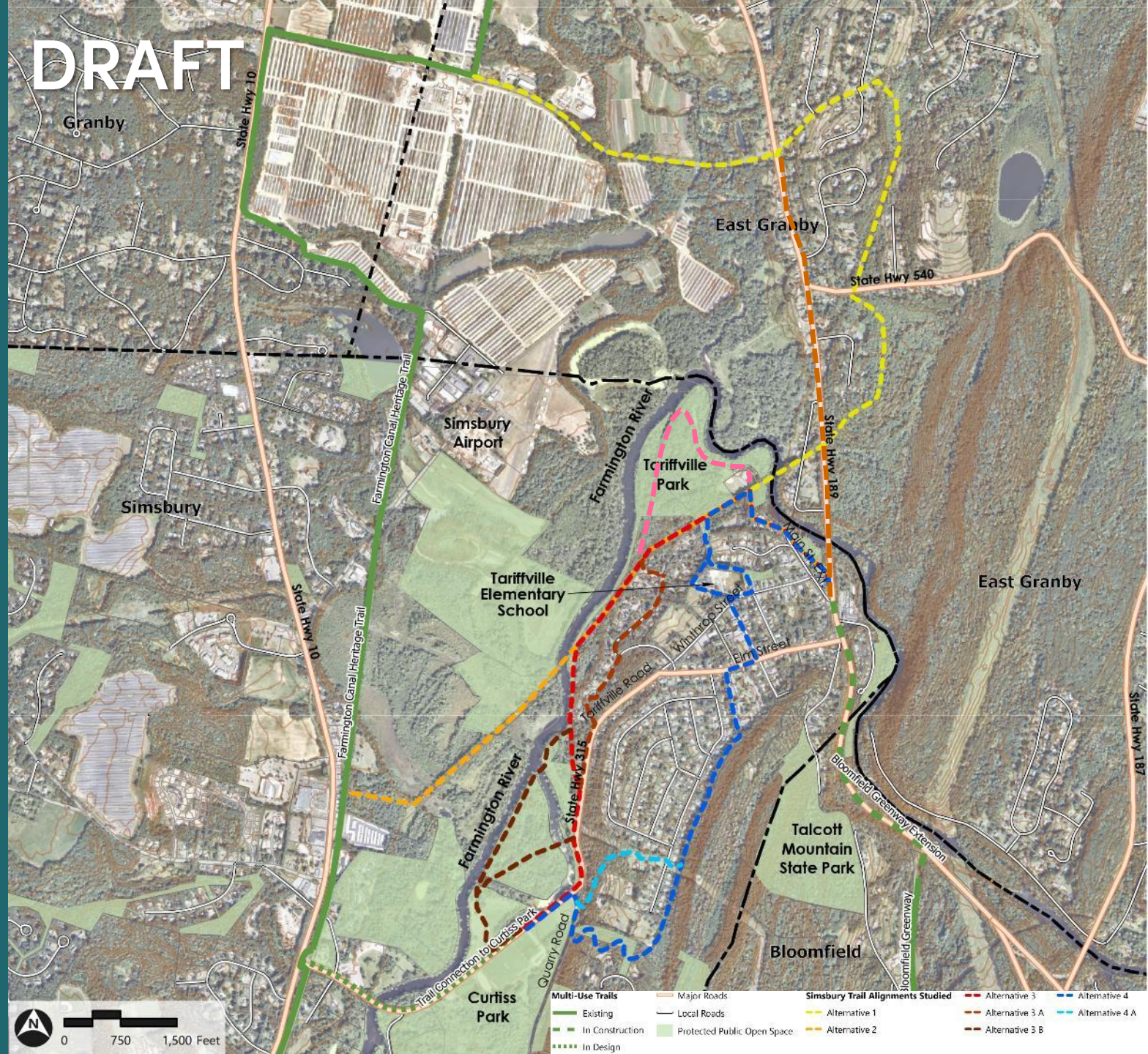


PROJECT SCHEDULE								
CRCOG East Coast Greenway Gap Closure Study		2023						
TASK DESCRIPTION	Jan	Feb	March	April	May	June	July	Aug
Task 8: Town of Simsbury Study	[Dark Grey Bar]							
8A: Town of Simsbury Coordination Calls (6, monthly)		■	■	■	■	■	■	
8B: Public Workshop			■					
8C: Public Meeting					■			
8D: Milestone Presentation							■	
8E: Existing Conditions Review		■						
8F: Identirfy Alignments			■					
8G: Probably Costs of Alignments				■				
8H: Preferred Alignment Conceptual Plan					■			
8I: Town of Simsbury Recommendations Report						■		
	■	■			■			
					Study Team Meeting		Public Workshop/Meeting	

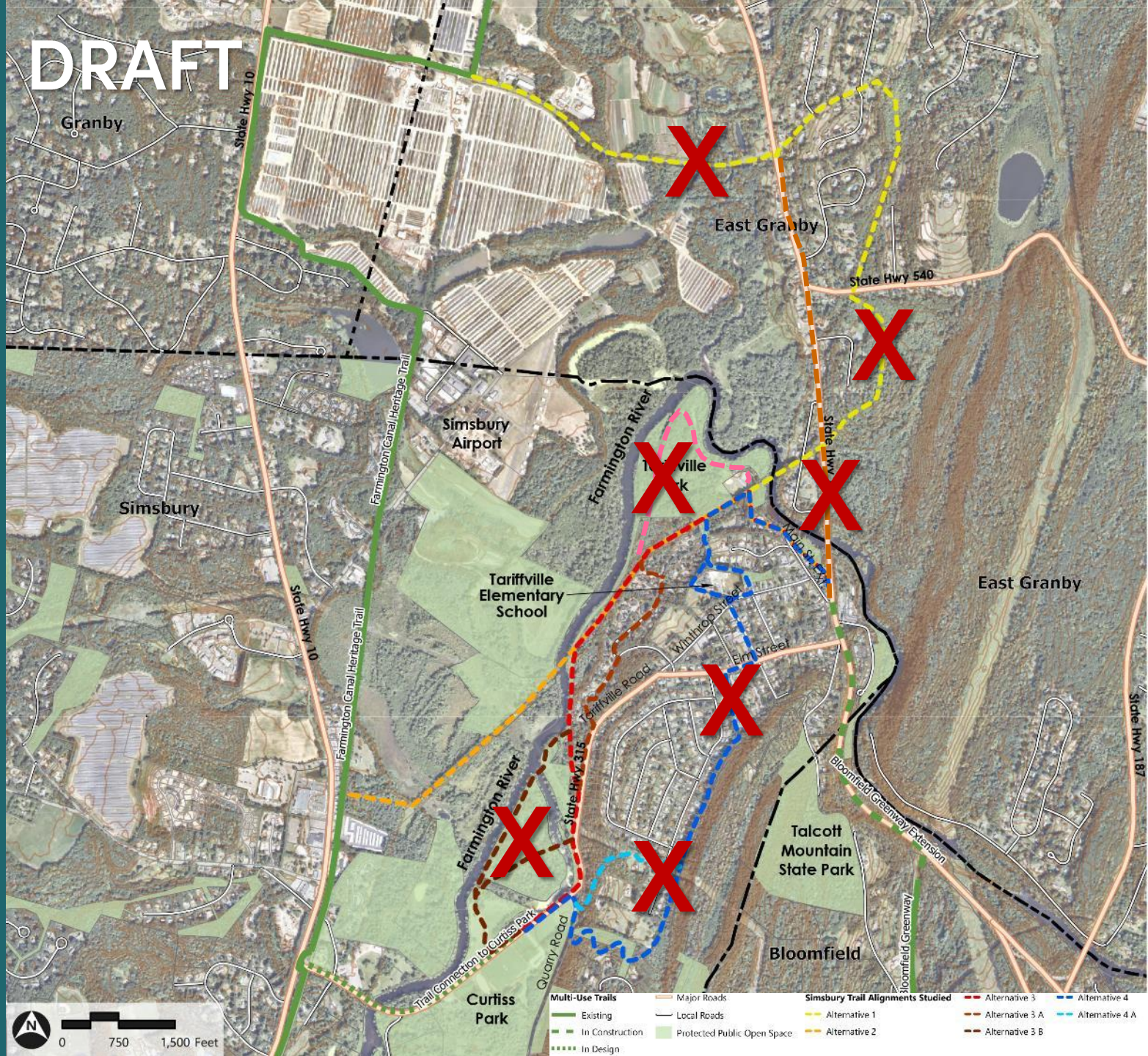
Study Area



Alignment Options Studied



Alignment Options Studied ...and Ruled Out

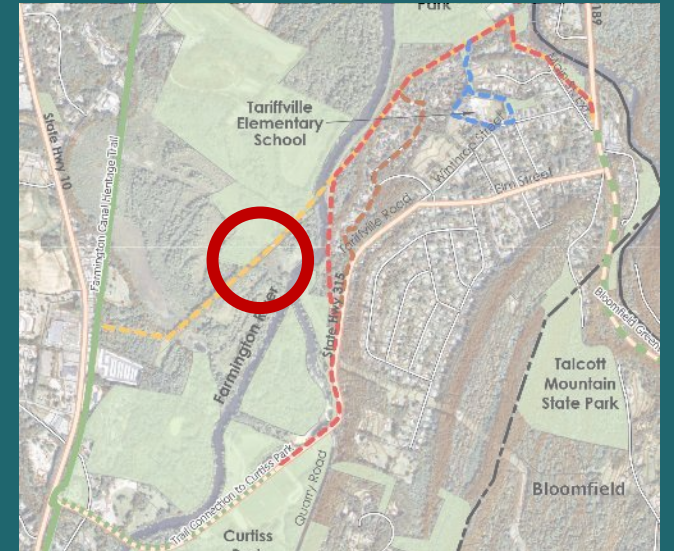




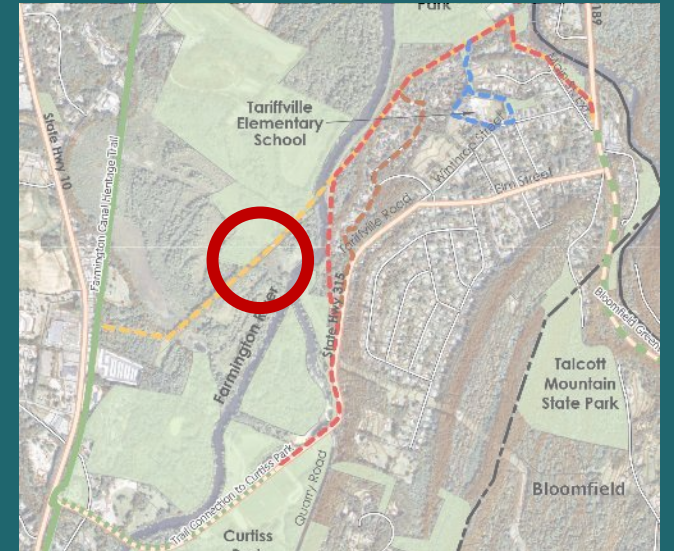
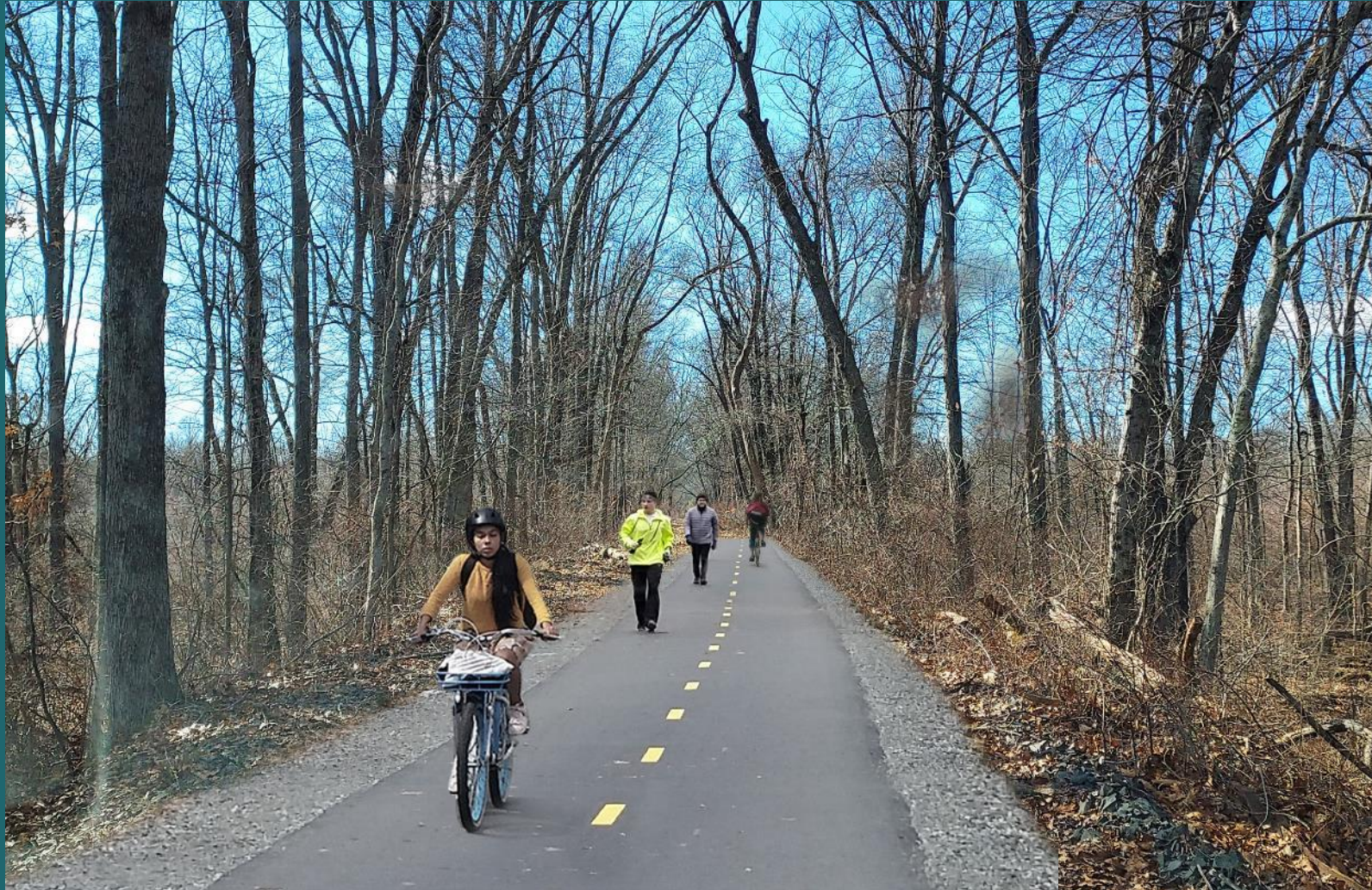
Draft Alignment Alternatives



Draft Alignment Alternative 2



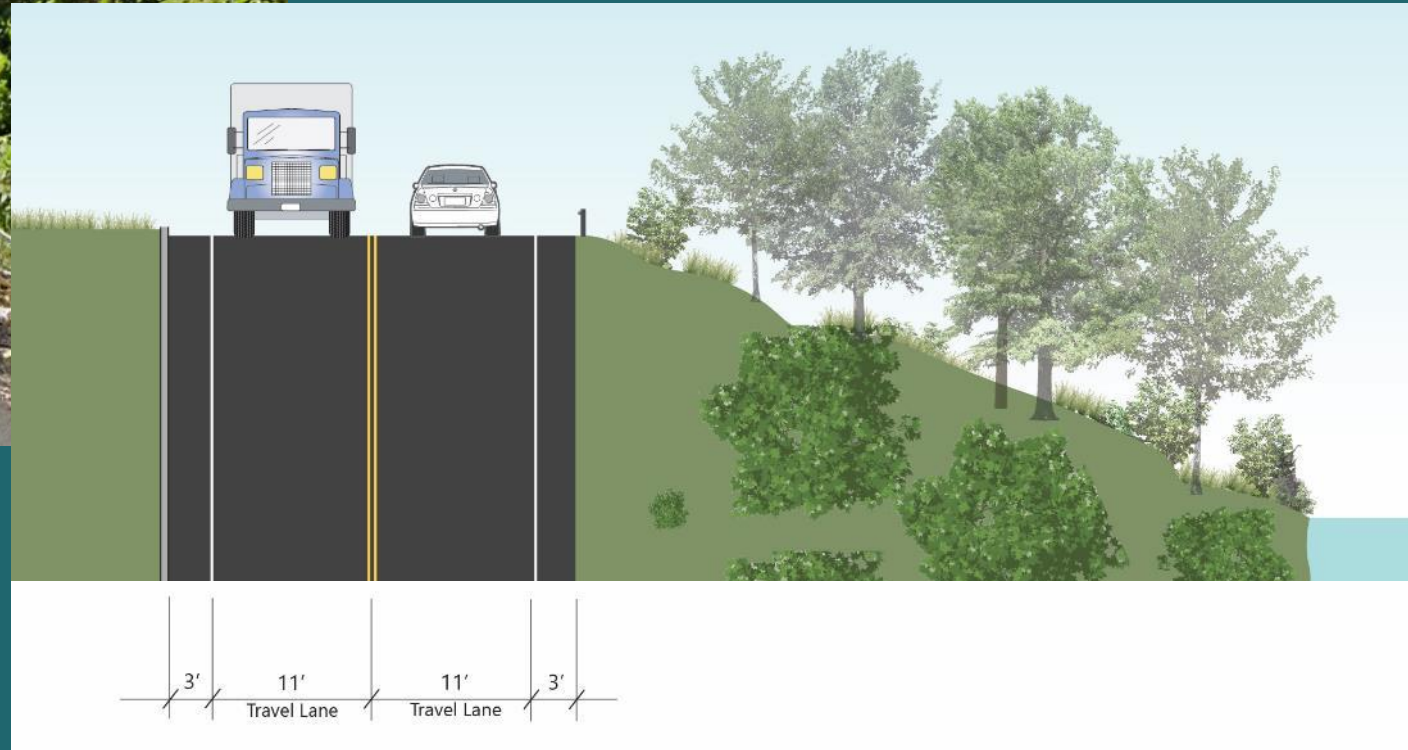
Draft Alignment Alternative 2



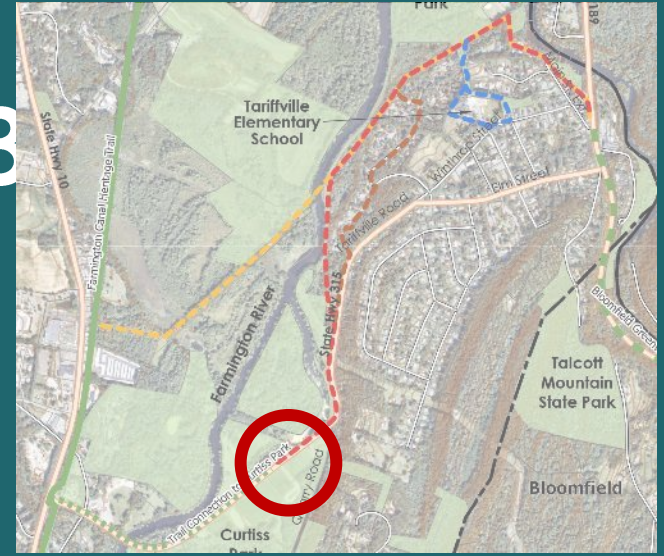
Draft Alignment Alternative 3/3



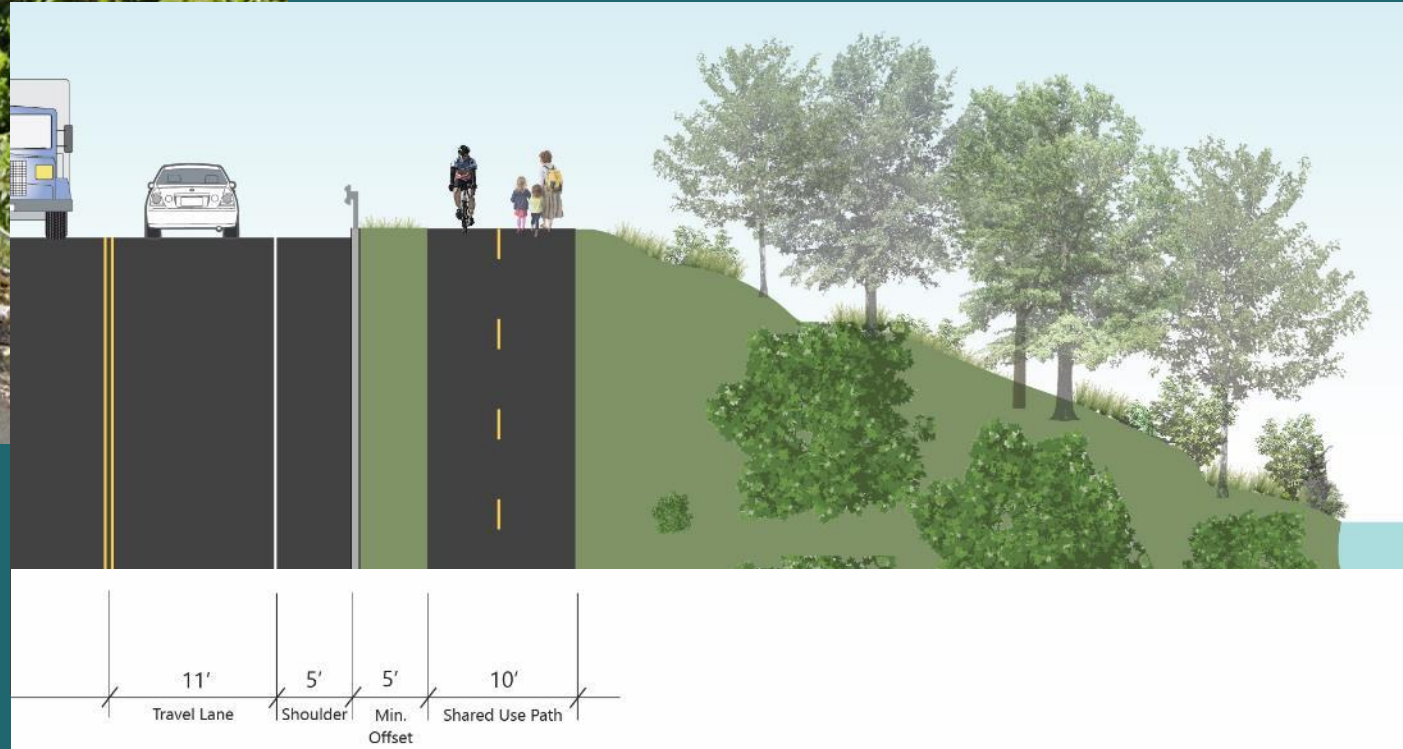
Rte. 315 Current Conditions



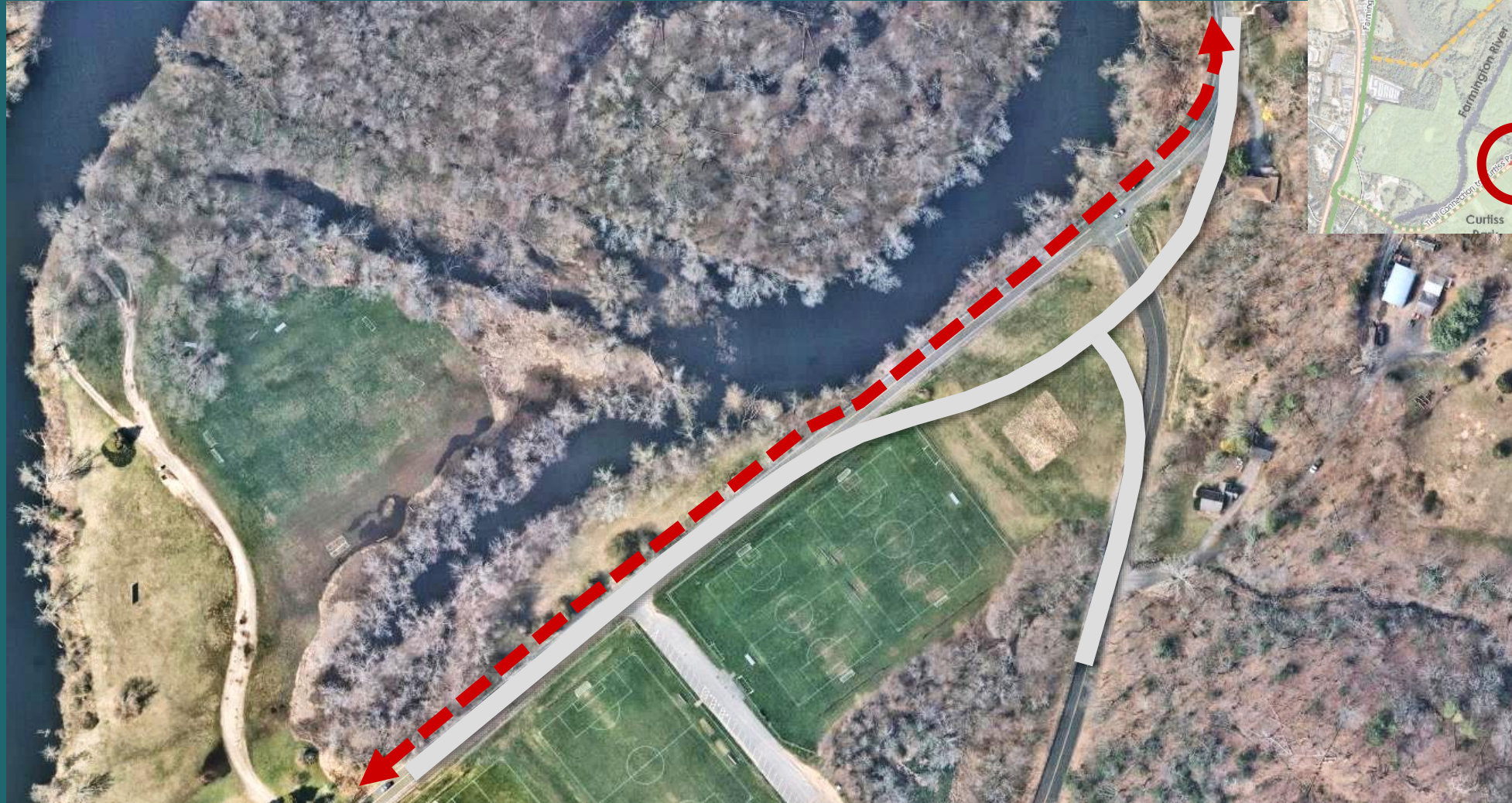
Draft Alignment Alternative 3/3



Rte. 315 DRAFT
Side Path
Concept

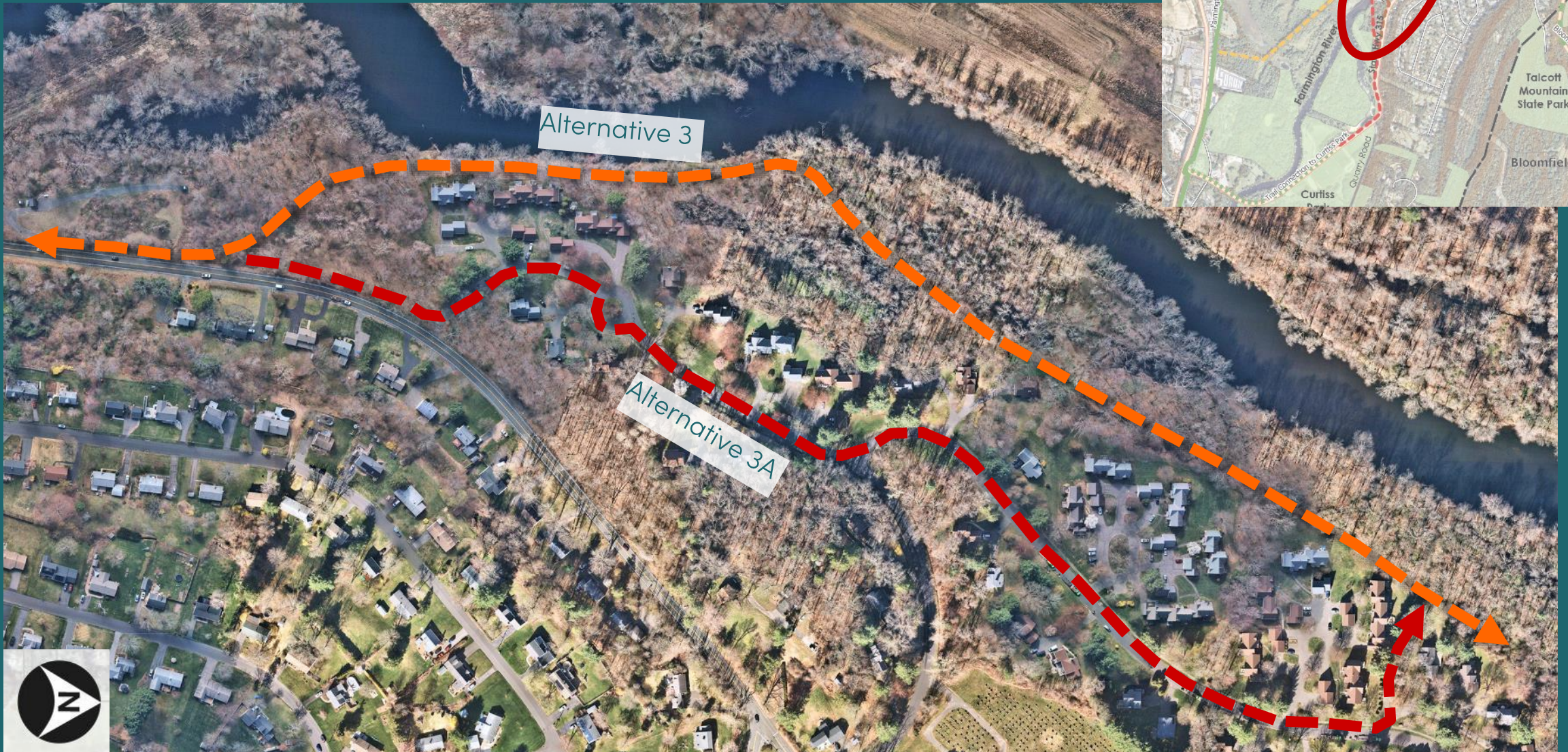


Draft Alignment Alternative 3/3



Rte. 315 Potential Revised Alignment

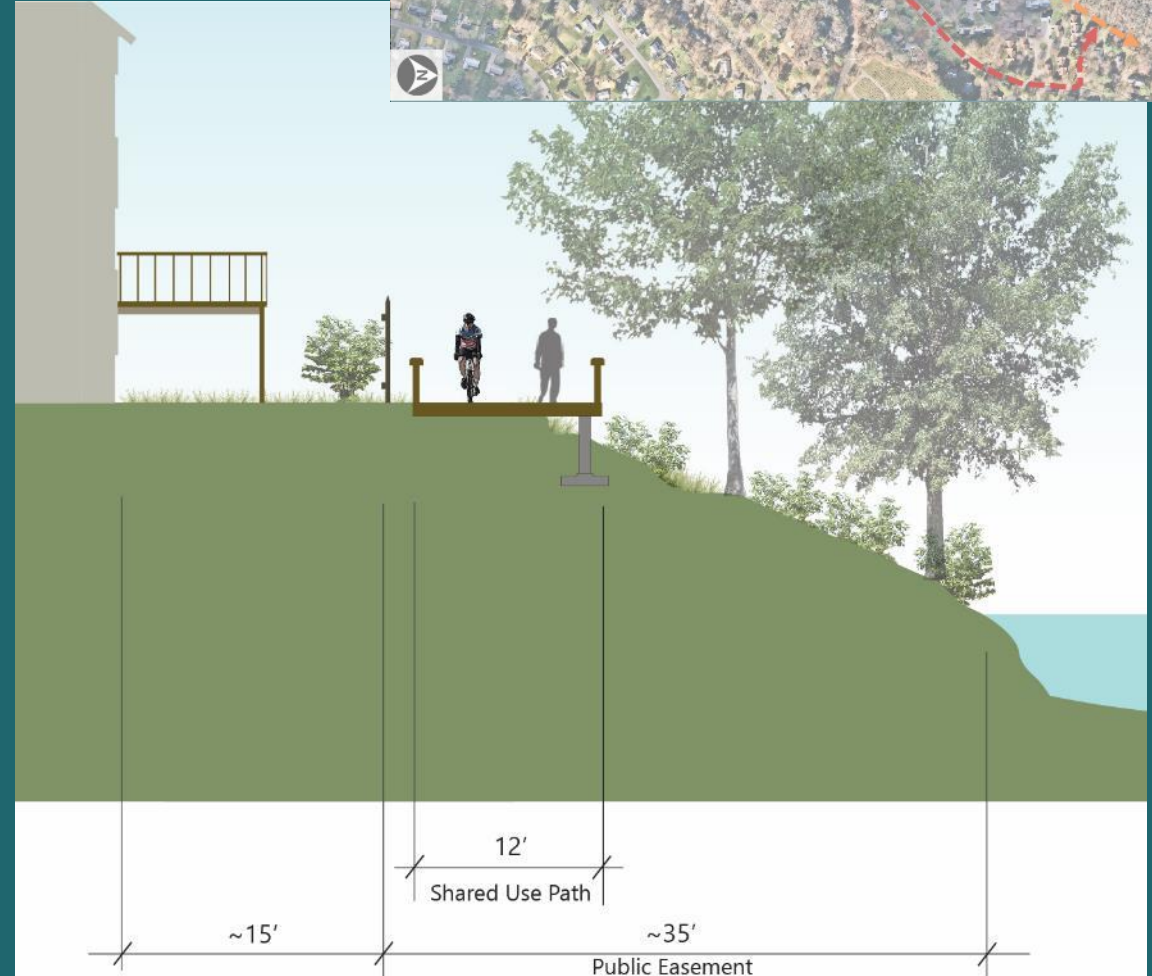
Draft Alignment Alternative 3/3



Draft Alignment Alternative 3



Farmington Riverbank Current Conditions



Farmington Riverbank DRAFT Path Concept



Tariffville School Cafeteria

KEY TAKEAWAYS from the ~45 residents:

- Significant support for potential use of former rail line on west side of Farmington River
- High level of interest in further extension of the trail on west bank, further north
- Concerns about environmental impact to river, especially with its “Wild & Scenic” designation
- Privacy issues for Governor’s Bridge condo residents
- Desire of some for team to revisit some of the discarded options





Public Outreach Update

Outreach

- Stakeholder Email List: 101
- Digital Outreach: Social Media Newsletters
- Hartford Courant
- Local Press Outreach
 - Hartford News
 - East Hartford Gazette
 - Bloomfield Messenger
- Eventbrite

East Coast Greenway Meeting April 18

On Tuesday, April 18, Capitol Region Council of Governments (CRCOG) will host a public meeting on the East Coast Greenway (ECG) plan from 4-7 pm at the Keney Park Pond House, 323 Edgewood Street, Hartford. The study is designed to explore alternatives to close off-road gaps in the ECG route through the Capitol Region. Currently, uncertainties in the trail route exist in Simsbury, Bloomfield, Hartford, and



Continued on page 7



We want you to join us next week! CRCOG is really ramping up our East Coast Greenway outreach efforts this month! Submit comments and route suggestions on our online map or attend one of our upcoming workshops: East Hartford 4/11.

eventbrite.com/e/capitol-regi-...

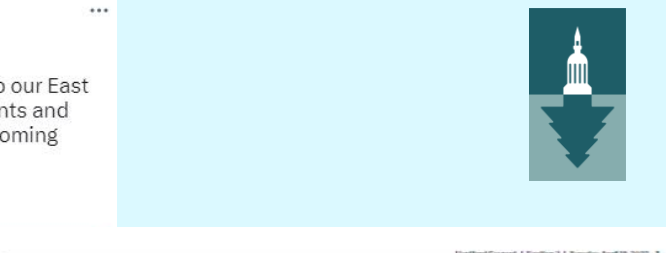
Join Us for a Public Workshop

April 11th, 2023
4-7 PM

Raymond Public Library
840 Main St, East Hartford, CT

CAPITOL REGION EAST COAST GREENWAY STUDY

SIMSBURY — BLOOMFIELD — HARTFORD — EAST HARTFORD



Hartford Courant | Section 7 | Tuesday, April 11, 2023

CONNECTICUT

OUR STATE. OUR CONNECTIONS.

Helping to navigate 'the long goodbye'

She cared for her grandfather until he was taken by Alzheimer's. Now she supports those on same path.

By Pam McLoughlin
United States

Ann Lombardi was keeping busy on her 30th birthday in Michigan from her home in Massachusetts and all around the world one day in 2010. She knew she had some donations, but she was always up for a new challenge. In February of 2010 she tried to reach him and couldn't. Lombardi's grandpa maybe didn't have his hearing aids on or maybe he had the television blaring. But when Lombardi couldn't reach him, the next morning she called a neighbor at the end of an hour and his garage door was open and his car was gone. Police found Conrad Droscher Jr. confused and disoriented hours away from a neighborhood where he had stopped to look for a bathroom. A family member in the area went to get him and Lombardi realized, "This was clearly more than just a day off."

The first thing she saw was a facility he could afford that would be safe, so Lombardi moved her grandfather in with her family in Massachusetts by the Connecticut line. So began her 15-year journey of caring for a loved one with Alzheimer's Disease.

Toll on caregivers: There would be moments of heartbreak, realization, frustration and exhaustion in living a caregiver, but Lombardi was able to negotiate it all — keep playing — with moments from the Alzheimer's Association. "It's very sad, it's exhausting," she said of being a caregiver. "They call it 'the long goodbye.' It's very appropriate."

According to the Alzheimer's Association 2023 report, 6.7 million people in the United States are living with Alzheimer's and 30,000 in Connecticut. In the United States there were 11 million people who provided unpaid care for Alzheimer's and 12,000 in Connecticut. Droscher, 93, died a couple of years ago.

Turn to Caregivers, Page 3



Input sought on trail link plan

Bicycle could change proposal committing in central Connecticut.

By Dave Slavicek

Planners are deciding how to best connect the Bloomfield Greenway to the roughly 20-mile Farmington Canal Heritage Trail, part of a larger plan to link Hartford and East Hartford to Connecticut's premier bicycle and paved walking path. Trail developers this month held a public meeting about the plan that could change the face of bicycle commuting in central Connecticut for decades.

As contractors complete a multi-purpose trail link from Bloomfield into Simsbury's Tanglefoot section, the next step is to figure out how to continue to meet the Farmington Canal Heritage Trail, which runs north-south about a mile to mile to the west.

There is no simple and available east-west path, though, and designing the route requires accounting for private property, high-traffic public roads, the Farmington River, steep changes in elevation and more.

So far, information gathered in the month, the Capitol Region Council of Governments is briefing residents to get forward ideas. The next meeting is April 18 at 4:30 p.m. and 6 p.m. at the Keney Park Pond House, 323 Edgewood St., Hartford, followed by April 26 at 4:30 p.m. and 6 p.m. at the Albany Avenue Woodlawn Services Center, 330 Park Ave., Bloomfield.

Planners Fran Viti, a consultant for CRCOG, are mapping alternatives to the off-road and connect to local amenities. We want it to be well designed and attractive as possible use," said Viti. Viti, a senior planner with Viti, is available to be a

Diner serves up retro vibes

The Olympia provides perfect music video backdrop for two musicians with local roots

By Christopher Amott | *Hartford Courant*

They had been in a band together, then she found herself at the Olympia Diner in Newington in the middle of the night with fellow jazz musician Jason LaVere. "She was a music video for their song 'When I'm With You.'"

The music video was a beautiful. The three-minute video opens with the diner's deep-sea fish on the diner's small counter-jukebox. The album he made-up as we saw LaVere outside, pulling up to the diner in a fancy red car.

It's a love song, but the video is not so much a romantic occasion as a couple of friends getting together. LaVere enters the diner, he sits on the counter while Blackstone snaps his picture — with an old-fashioned camera, not her phone. They share a milkshake and pastry. That's when the perfect food begins. Later in the video, the couple sits on the floor, she goes outside to smoke cigarettes while Blackstone sings "The end of opening... out of control." They dance in the parking lot, then drive off in search of next adventures — passing to do a dance with the car as they pull out.

The Olympia Diner, which was built in the 1950s and retains its mid-20th century decor, is lit up the video with colorful interior lights and the distinctive neon sign outside. This is far from the diner's true story. It has been seen in the "Dark" and "When I'm With You" and has also appeared in TV shows and commercials.

Blackstone grew up in Connecticut and studied jazz at the University of Hartford's Pratt School. She then went to the University of Hartford to study musical theater, and she studied

Turn to Diner, Page 3



Jason LaVere and Kelley Blackstone outside the Olympia Diner, where they filmed the video for their song "When I'm With You." COURTESY



Future Engagement

Summer 2023

- Community Pop-up Events
- 1-on-1 Stakeholder Meetings
- Online Engagement via Website
- Email and Newsletters

What?

- Screening evaluation of all options considered
- Visualizations and additional detail of Top 2 - 3 Alignments
- In-person site visits with stakeholders on Top 2 - 3 Alignments

Winter 2023-2024

- Final Public Meetings
- Town Council Meetings / Approval

What?

- Review of project process
- Summary of report recommendations

Pop-Up Identification?

- Ride the State
- HMF – RiMaConn



Online Engagement



CRCOG ABOUT · SERVICES · GOVERNANCE / COMMITTEES · GENERAL PUBLIC · NEWS & EVENTS ·

Capitol Region East Coast Greenway (ECG) Study



ABOUT THE STUDY

The Capitol Region Council of Governments (CRCOG) has initiated a study to identify the preferred alignment of the East Coast Greenway through the last remaining 12-mile gap in the Capitol Region in Simsbury, Bloomfield, Hartford, and East Hartford. The East Coast Greenway is an off-road walking and biking route stretching 3,000 miles from Maine to Florida. In Connecticut, the East Coast Greenway consists of a 200-mile route between the Rhode Island state line at Sterling, Connecticut and the New York state line at Greenwich. In Connecticut, the completed portions of the East Coast Greenway utilize a series of trails including the Air Line Trail, the Hop River Trail, and the Farmington Canal Trail.



crcog.org/capitol-region-ecg-study

Online Engagement



Map | **Satellite**

Windsor Locks | **East Win**

WEST SIMSBURY | **Simsbury** | **WEATOGUE** | **Bloomfield** | **Windsor** | **South Windsor**

Avon | **West Hartford** | **Hartford** | **East Hartford** | **Farmington** | **Wethersfield** | **Newington**

CLAY ARSENAL | **ASTLEIGH HILL** | **WEST BULLWARD HISTORIC DISTRICT** | **SOUTH GREEN** | **BARRY SQUARE**

GLASTONBURY CENTER

Map data ©2023 Google | **Terms of Use** | **Report a map error**

Capitol Region EAST COAST GREENWAY STUDY
WINDSOR • BLOOMFIELD • WINDSOR • EAST WINDSOR

Please utilize this mapping tool to provide comment for 1) potential trail locations, and 2) key destinations or barriers which should be considered during this project. Please use the comment box directed to provide more information on each feature identified such as potential improvement to be made, planning history of a particular alignment or other relevant information.

Add a pin or line | **All pins & lines**

Add Pin | **Add Line**

Address Search
Search...

Legend

- Study Area
- Other Towns of Interest
- User Content**
 - User Pins (4)
 - User Lines (1)
- East Coast Greenway Alignment**
 - On-Road Routing
 - Trail
 - Trail, Unpaved
 - Transit or Ferry
- Multi-Use Pathways & Sidepaths**
 - Constructed

SHARE YOUR THOUGHTS

Want to stay involved and find out about the latest opportunity to participate? Join our interested parties list, by filling out this **FORM**.

CRCOG is interested in your thoughts about the remaining gaps. Please submit comments using the interactive map, link below:

INTERACTIVE MAP



crcog.org/capitol-region-ecg-study



Initial Alignment Ideas

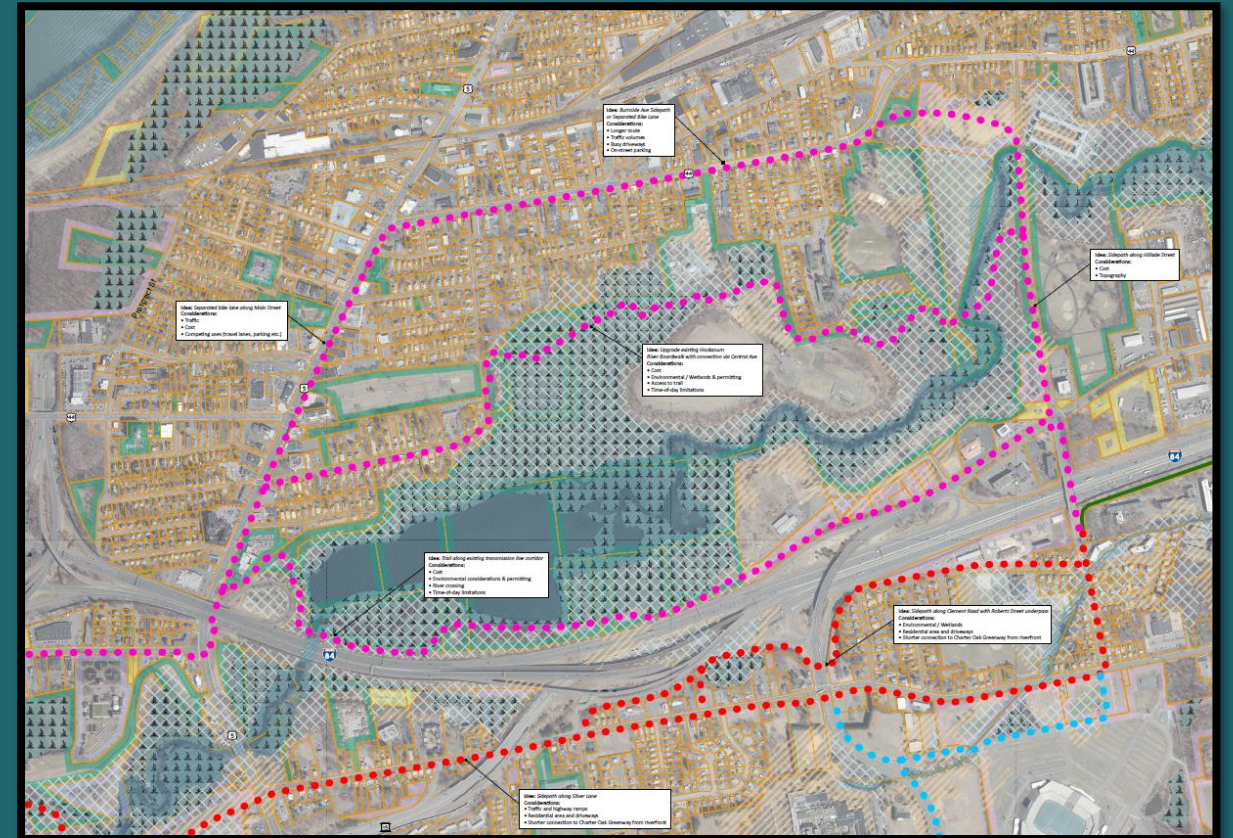
Alignment Identification



Conceptual Corridors

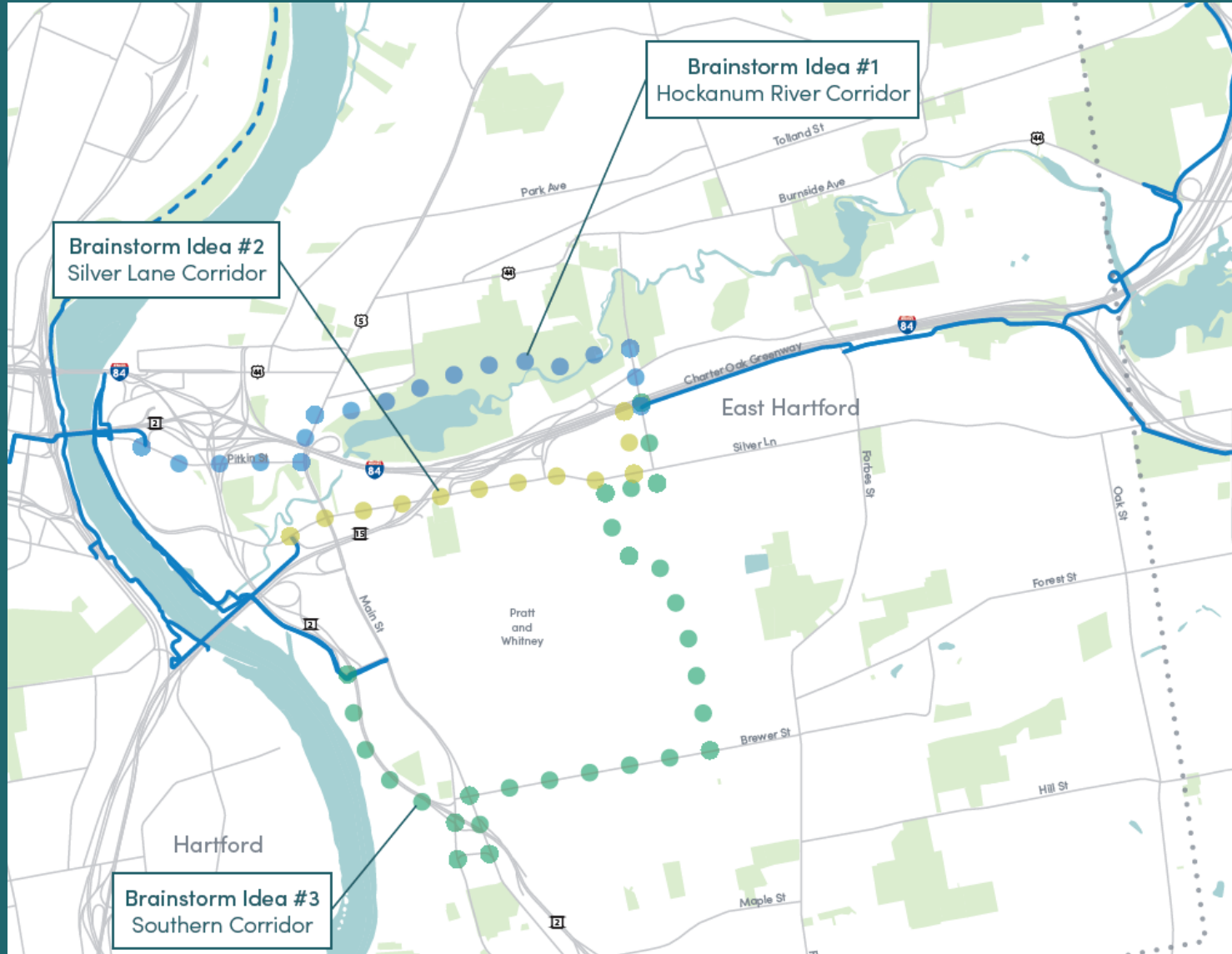


Alignment Ideas in Corridors

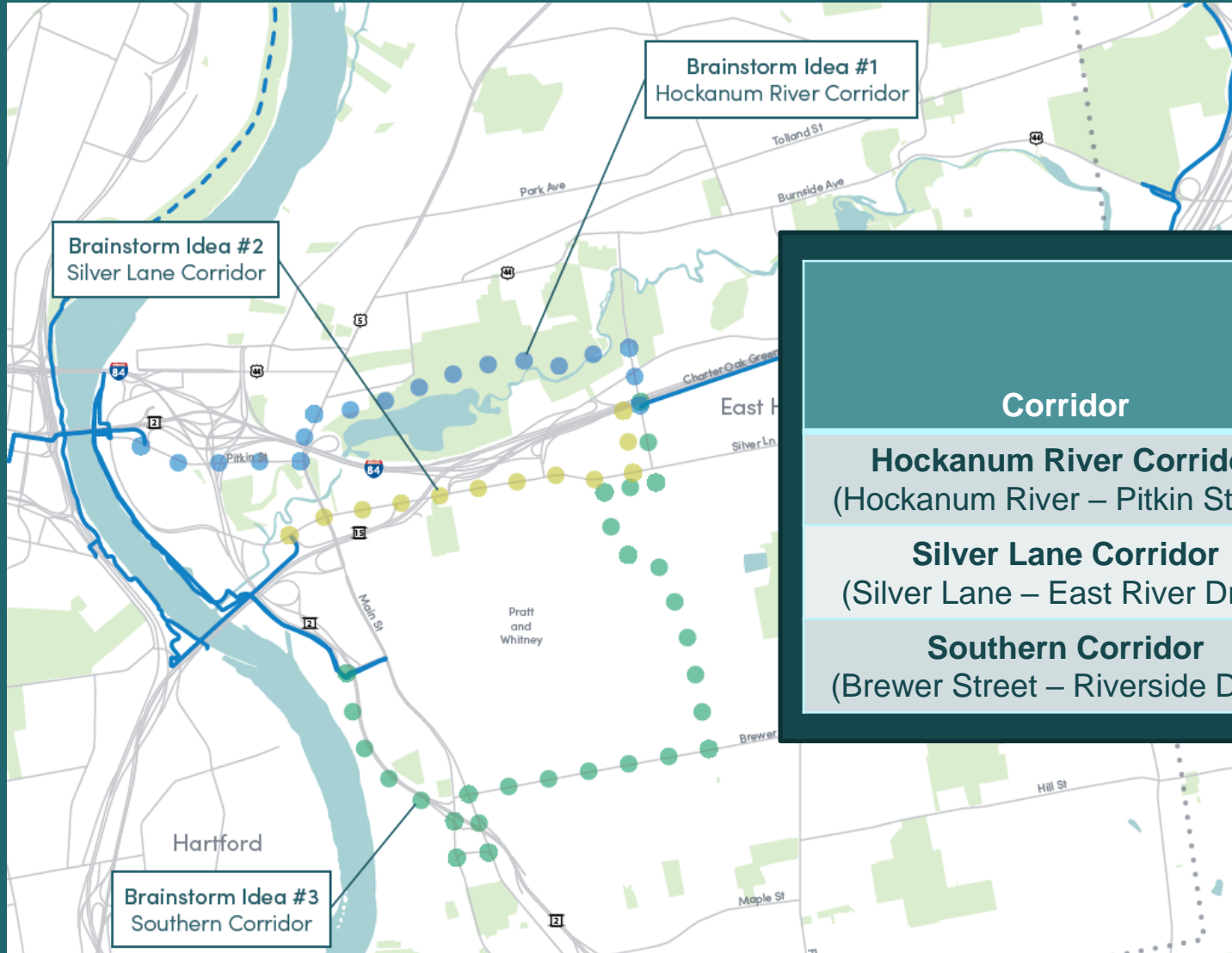


Plots on table in back – Please leave comments!

East Hartford



East Hartford



Corridor	Population within ½ mile	Employment within ½ mile	Distance (Charter Oak Greenway <-> Founders Bridge)
Hockanum River Corridor (Hockanum River – Pitkin Street)	<u>11,100</u>	10,500	<u>3.5 miles</u>
Silver Lane Corridor (Silver Lane – East River Drive)	8,600	7,400	<u>3.6 miles</u>
Southern Corridor (Brewer Street – Riverside Drive)	<u>11,400</u>	<u>18,700</u>	6.0 miles



East Hartford

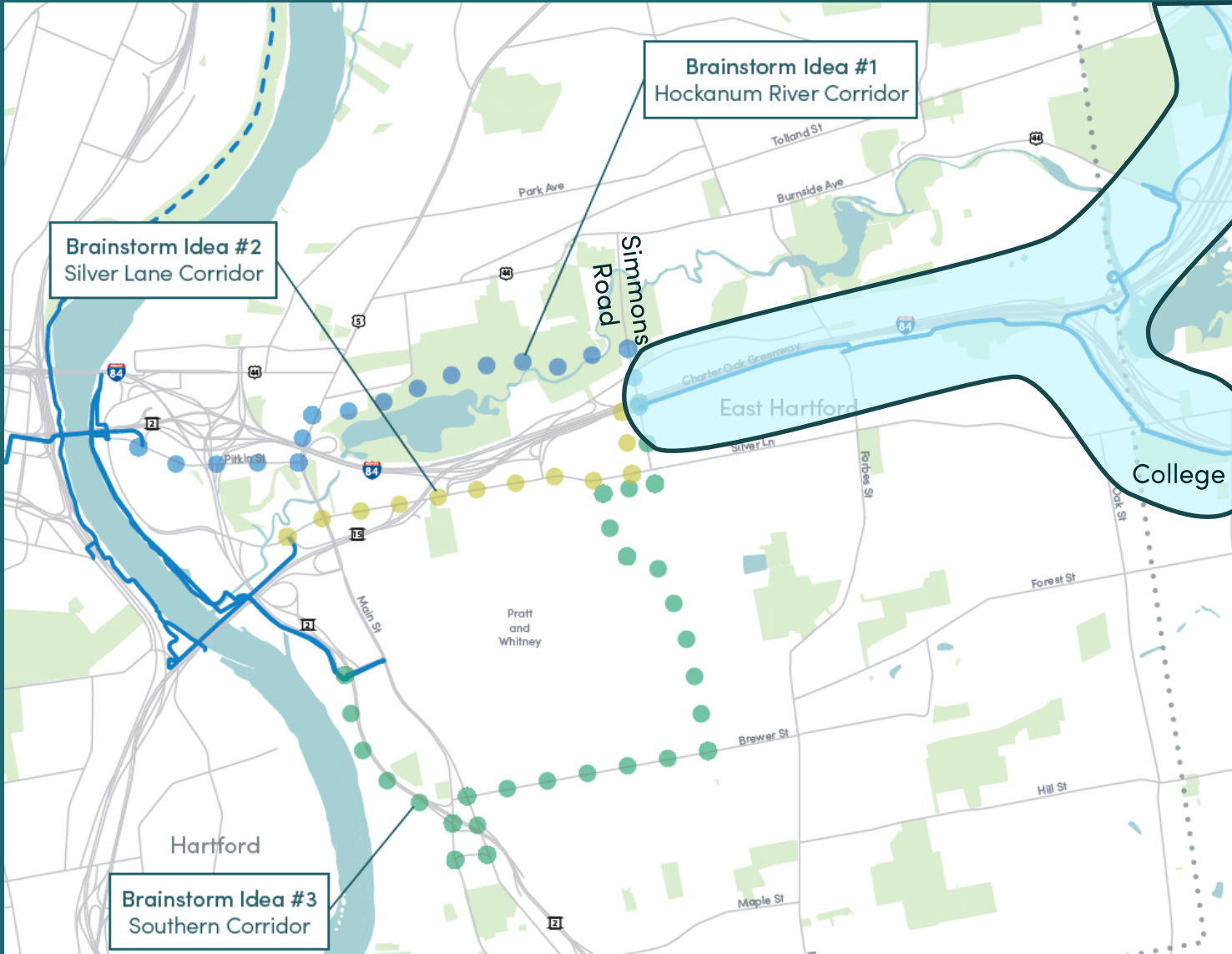
Is a direct connection
between **Hartford &
Manchester** important?

Within next 5-miles east of
Simmons road:

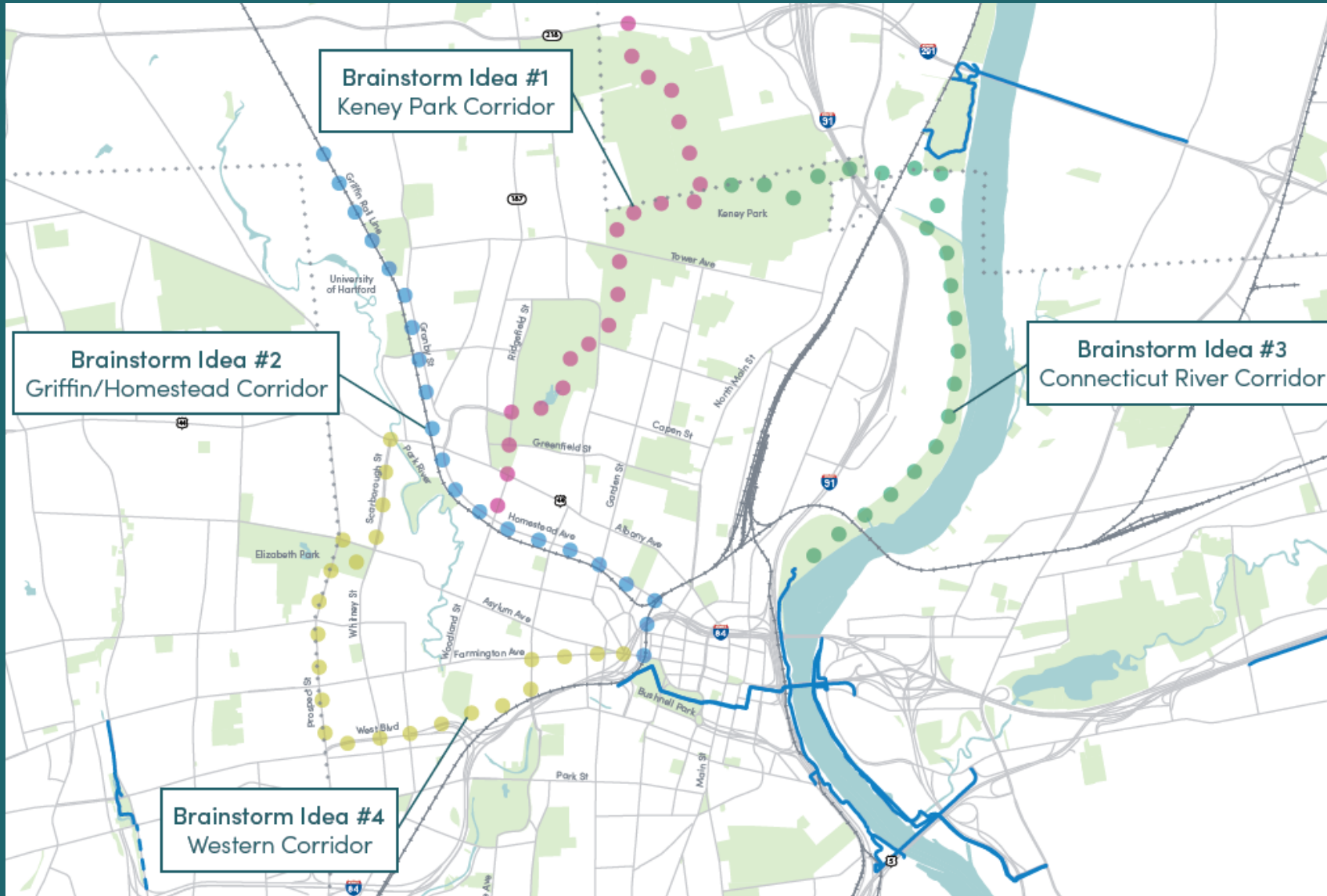
Population: 18,800

Employment: 6,500

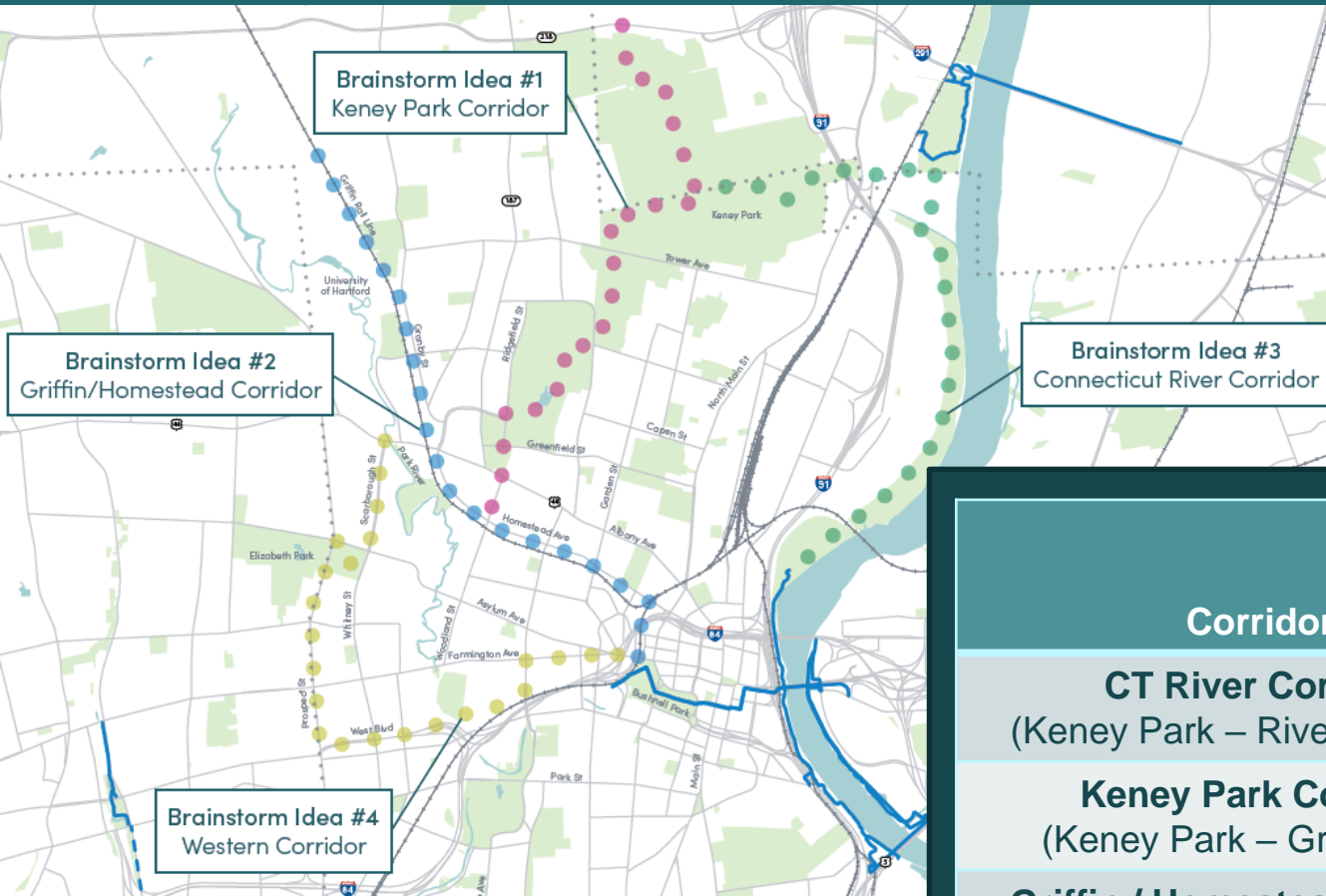
Manchester Community
College: 6,000 students



Hartford

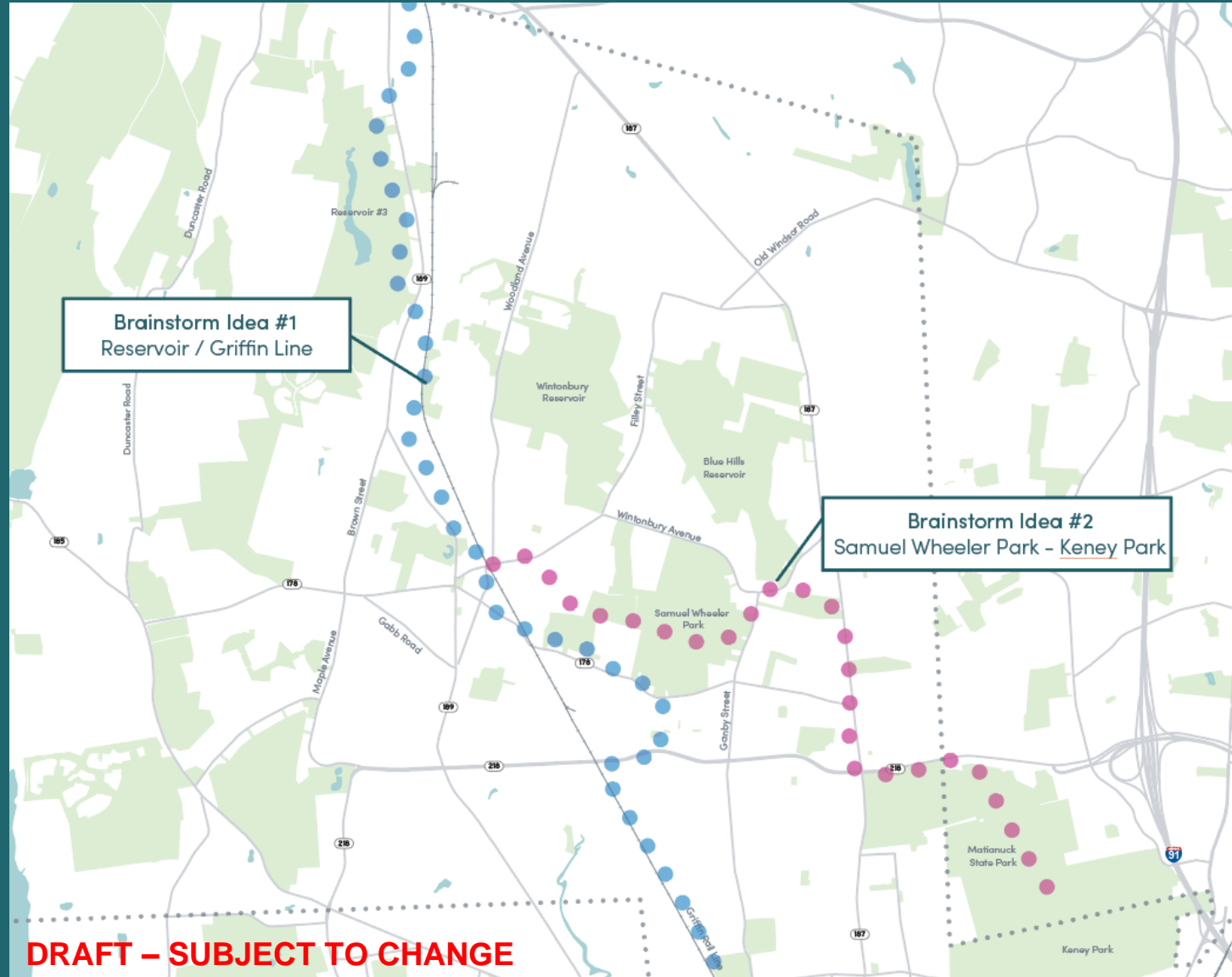


Hartford

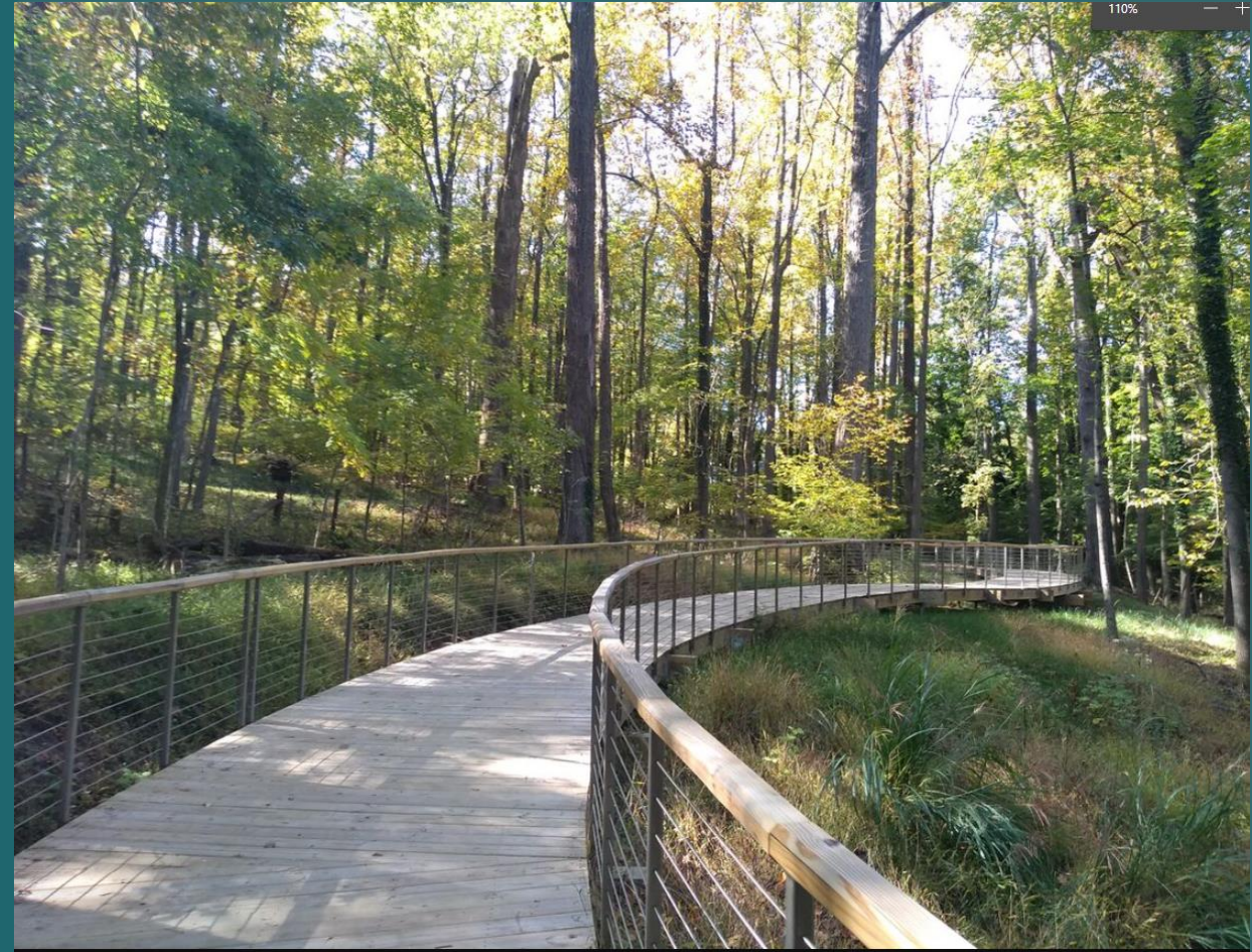


Corridor	Population within ½ mile	Employment within ½ mile	Distance (Copaco <-> Founders Bridge)
CT River Corridor (Keney Park – Riverside Park)	8,545	32,238	8.2
Keney Park Corridor (Keney Park – Griffin Line)	37,575	<u>58,101</u>	8.8
Griffin / Homestead Corridor (Rail Corridor or Adjacent)	32,349	<u>58,916</u>	<u>5.4</u>
Western Corridor (Prospect – West - Farmington)	<u>49,217</u>	<u>63,770</u>	7.9

Bloomfield



Examples



Jones Falls Trail - Maryland

Examples



Green Line Extension – Boston



Charlotte Rail Trail

Examples



Blackstone Greenway – RI



Elliott Bay Trail – Seattle

Examples



Photo: Jason Phillips / AllTrails

Route 44 underpass – Avon, CT



I-384 Exit Overpass, Bolton, CT

Examples



New Haven



Raised Cycletrack in Washington, DC

Examples



Maple Ave - Hartford



Cambridge, MA

Examples



Wethersfield Ave - Hartford



Cultural Trail - Indianapolis



Screening Prioritization (Survey)



Screening Criteria

Screening Process –
What do we prioritize in selecting a route?



Off-Road



Connectivity



Environment



Traffic Safety



Equity



Cost



Personal Security



Right-of-Way



Economic
Opportunity



Screening Criteria



Off-Road

- Percentage Off-Road or Protected Facility (e.g. Raised Cycletrack)



Traffic Safety

- # of Driveway Crossings
- # At-Grade Roadway Crossings (*Consider Speed / Volume*)
- Level of Traffic Stress (LTS) (*On-road sections only - if applicable*)



Personal Security

- Average Distance to Access / Egress Point
- Max Distance to Access / Egress Point



Screening Criteria



Connectivity

- Population within ¼-mile
- Employment within ¼-mile
- Number of destinations within ¼-mile (based on Workshop)
- Seasonal / Time-of-Day Closures (Flooding or Daylight hours)



Equity

- Population within Justice 40 area within ¼-mile of Trail
- Average Ranking based on US DOT *Equitable Transportation Community* data



Right-of-Way

- Number of parcels overlapping with trail
- Level of right-of-way coordination
- Ease of Construction Access & Constructability



Screening Criteria



Environment

- Square feet of wetlands within 10-ft of trail
- Linear distance of trail within Floodplain
- # of NDDB areas traversed
- # Hazards Material Locations within 10-ft of trail
- Overlap / Adjacency to Historic Areas



Cost

- Total Cost
- Maintenance Cost



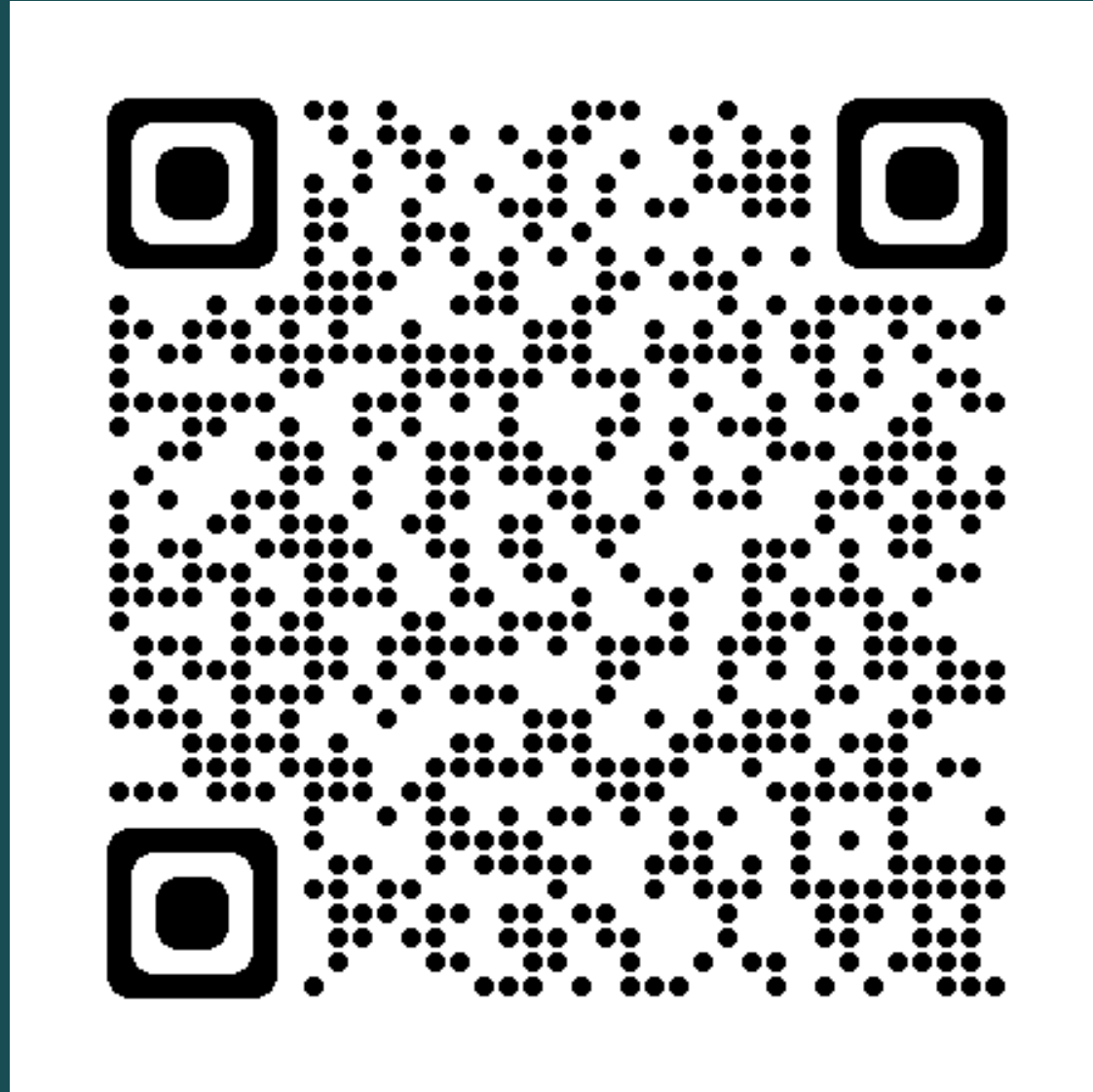
Economic Opportunity (E-Consult)

- Tourism Spending Impacts
- Public Health Cost Savings
- Transportation Implications
- Property Value Premiums



Survey

PollEv.com/parkersorens118





Next Meetings and Next Steps

- Wednesday, June 21st, 2023 – 10:30 – Noon
 - Initial Screening Results & Confirmation
 - Initial Shortlist Alignments Discussion
 - Engagement (Summer Pop-Ups, 1-on-1 stakeholder meetings)
- Wednesday, August 16th, 2023 – 10:30 – Noon
 - Revised Screening Results (as applicable)
 - Shortlist Confirmation
 - Initial Shortlist Graphics & Detail Alignments
- November 2023
 - Final Shortlist Materials & Confirmation
 - Preferred Alignment Discussion
- January 2024
- March 2024



Public Comment

Thank You!

Thank You!



Parker Sorenson, PE
psorenson@fhistudio.com
860-256-4905

Caitlin Palmer
cpalmer@crcog.org
860-724-4435