

Public Workshop

Hartford

Tuesday, April 18, 2023



CAPITOL REGION
EAST COAST
GREENWAY STUDY

SIMSBURY — BLOOMFIELD — HARTFORD — EAST HARTFORD

Introductions



Caitlin Palmer, AICP
CRCOG
Project Manager



Parker Sorenson, PE
FHI Studio
Consultant Team Project Manager

Agenda



1. What is the East Coast Greenway?
2. Project Overview
3. Routing Concepts
4. Workshop Activities
5. Other Engagement Opportunities



East Coast Greenway



Maine to Florida:

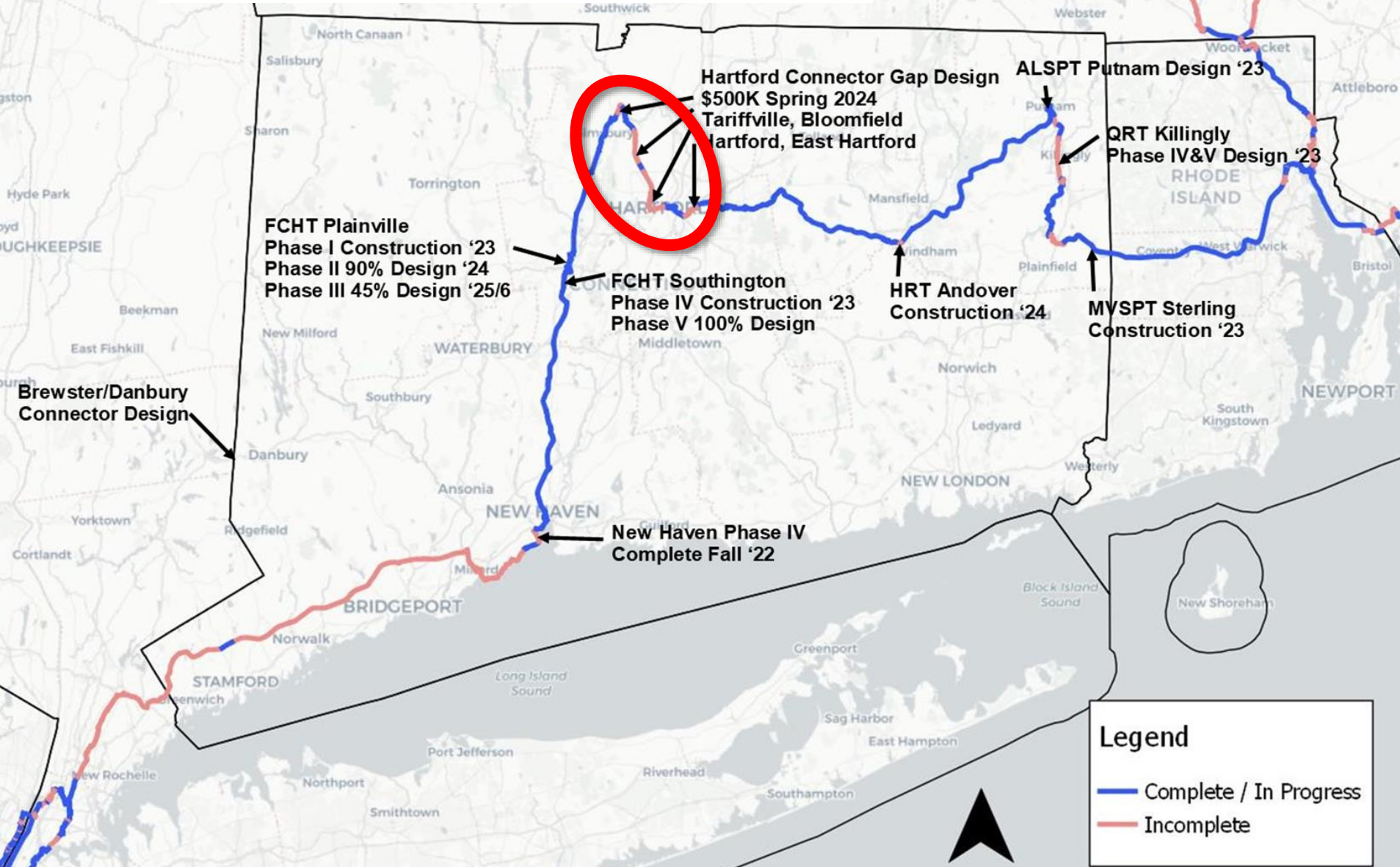


greenway.org

*Approximately 1,000 miles off-road today



CT Project Review



12-mile study area gap –
Simsbury,
Bloomfield,
Hartford, and
East Hartford

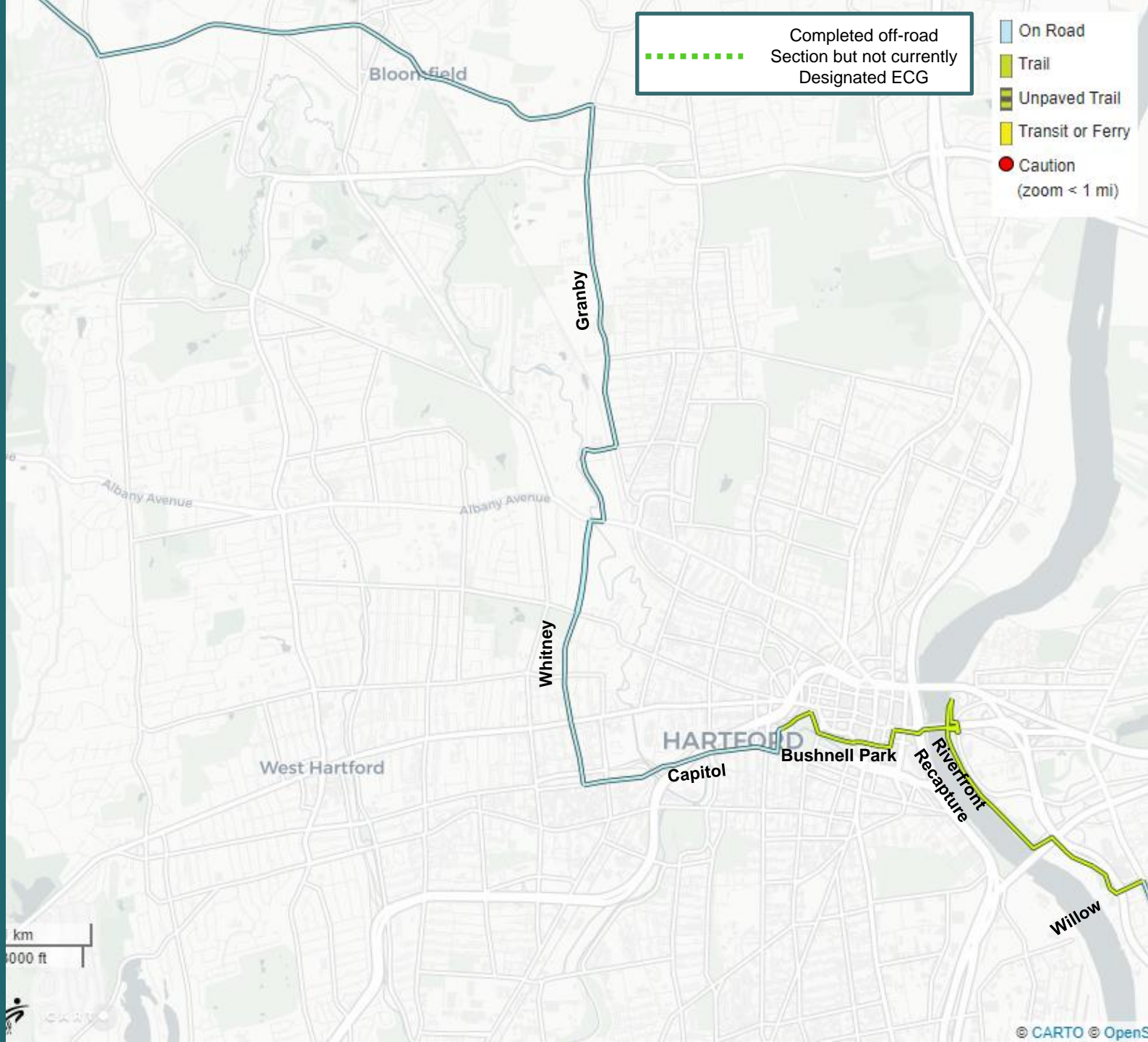
Goal: By 2027 –
63% Completion
Statewide

~150 mi between
New Haven and
RI state line



Completed off-road
Section but not currently
Designated ECG

- On Road
- Trail
- Unpaved Trail
- Transit or Ferry
- Caution
(zoom < 1 mi)



km
1000 ft



Opportunities

Health and Wellness



Environmental Justice



Mobility and Connectivity



Economic Benefit





Project Overview



Multi-Agency Effort

Managing Agency



Consultant Team



Partner Agencies &
Organizations

Federal
National Park Service

State
CT DOT
CT DEEP

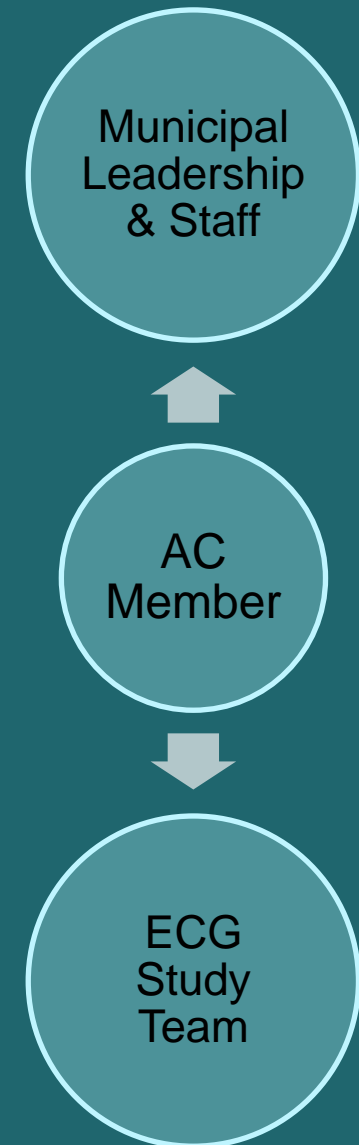
Municipal
Town of Simsbury
Town of Bloomfield
City of Hartford
Town of East Hartford

NGO
East Coast Greenway Alliance
Riverfront Recapture
The iQuilt Partnership



Advisory Committee Role

- Hartford participants:
 - Grace Yi, Senior Planner
 - Owen Deutsch, Principal Planner
- Critical link between project team and municipal leadership & staff
 - Note: Final plan will go to Councils for final endorsement
- Bi-Monthly meetings to guide each step of the project



About CRCOG

What is CRCOG?

- Metropolitan Planning Organization (MPO) for the Metro Hartford Region
- 38 municipalities
- Nearly 1,000,000 residents

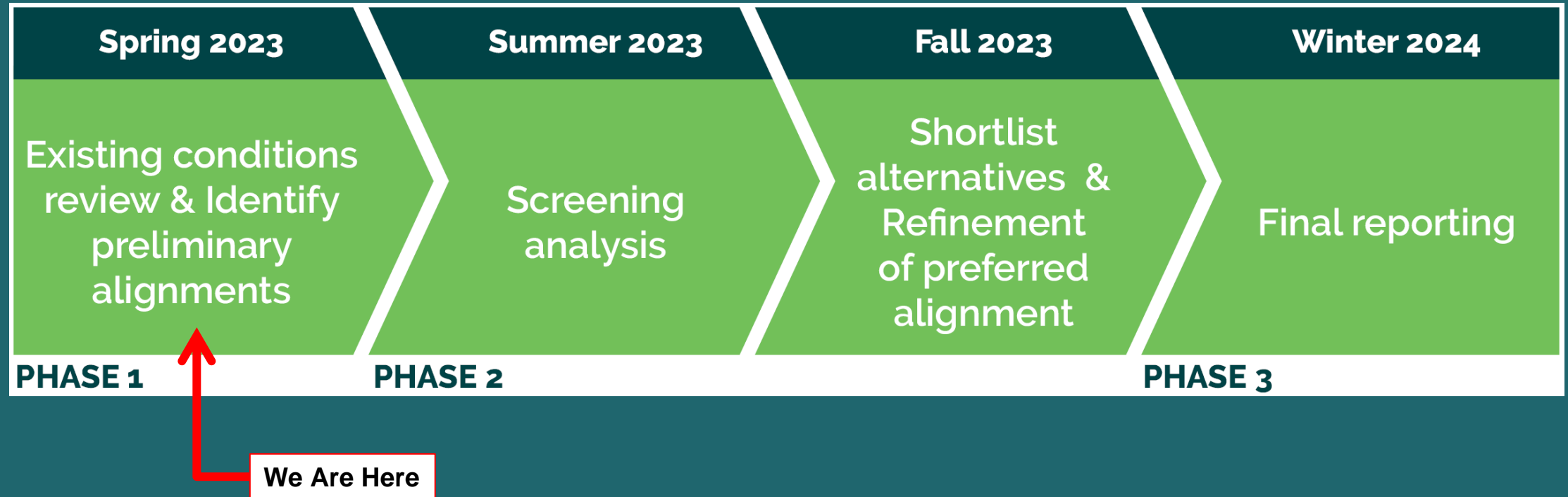
How is CRCOG involved in transportation planning?

- Transportation considerations in Metropolitan Transportation Plan, including planning for vulnerable users, expanding trail and complete street networks, and encouraging mode shift
- Coordination with CTDOT in support of bicycle and pedestrian improvements
- East Cost Greenway a key priority of the CRCOG MTP





Project Schedule



Routing Concepts



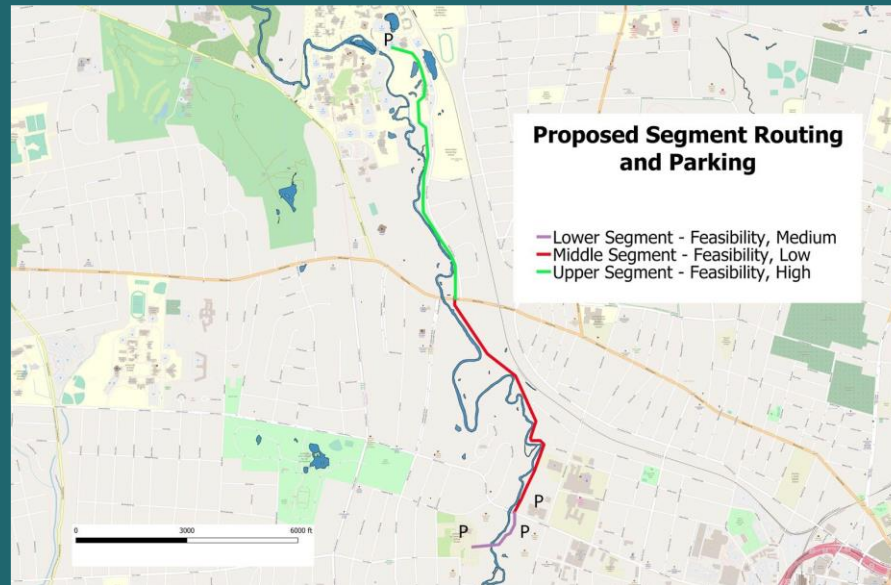


Incorporating Prior Efforts

Hartford 400 & hARTline Trail



Park River Study



Greater Hartford Mobility Study / I-84



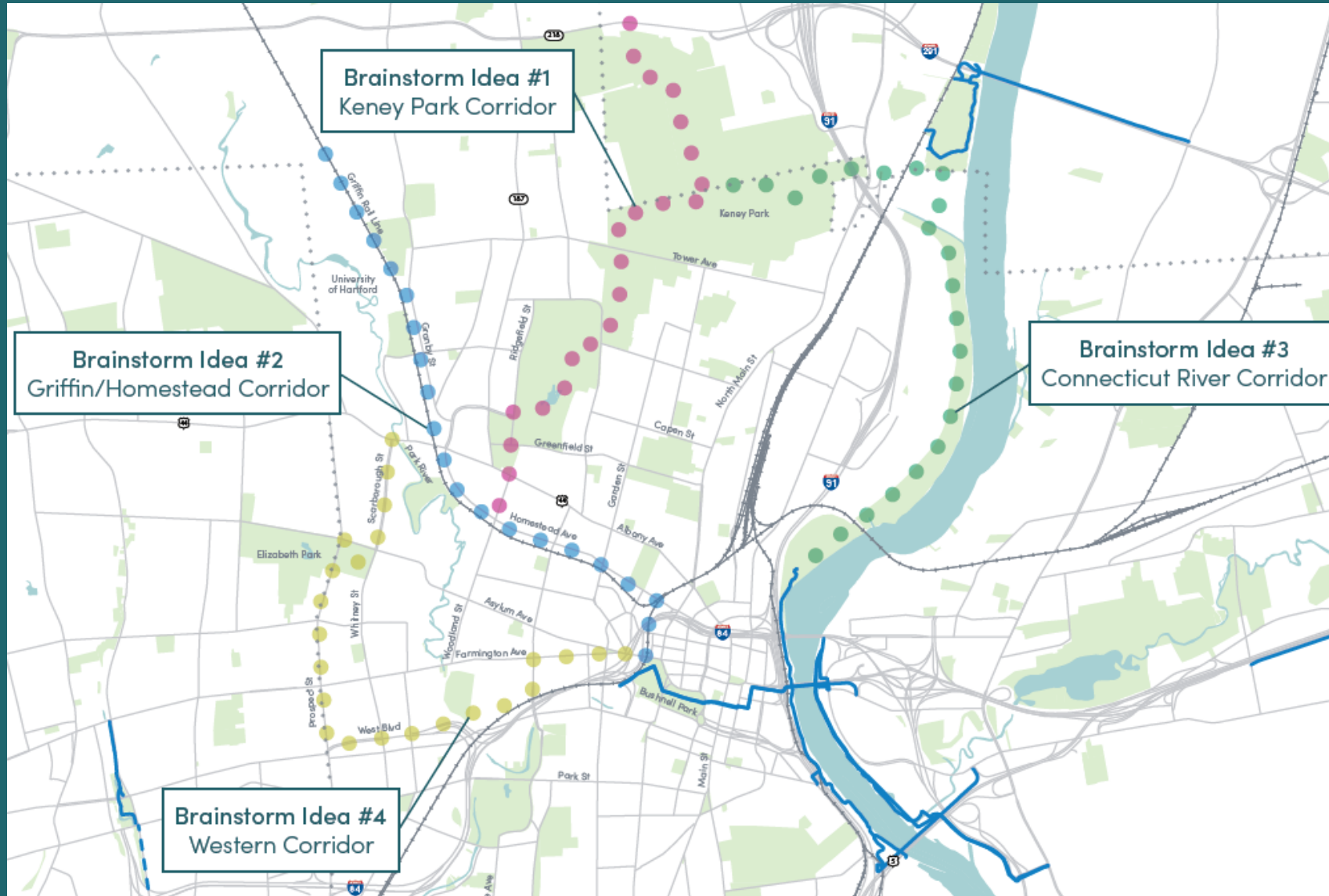


Griffin Rail Line

- Active freight spur
- State-owned and leased to private operator
- Surface Transportation Board abandonment duration even if abandonment is pursued
- Eversource transmission easement north of Albany Ave
- Approach: Only consider options which maintain rail connection with bike/ped uses in separate dedicated space



Routing Ideas





Routing Ideas



Corridor	Population within ½ mile	Employment within ½ mile	Distance (Copaco <-> Founders Bridge)
CT River Corridor (Keney Park – Riverside Park)	8,545	32,238	8.2
Keney Park Corridor (Keney Park – Griffin Line)	37,575	<u>58,101</u>	8.8
Griffin / Homestead Corridor (Rail Corridor or Adjacent)	32,349	<u>58,916</u>	<u>5.4</u>
Western Corridor (Prospect – West - Farmington)	<u>49,217</u>	<u>63,770</u>	7.9

Examples



Green Line Extension – Boston



Charlotte Rail Trail

Examples

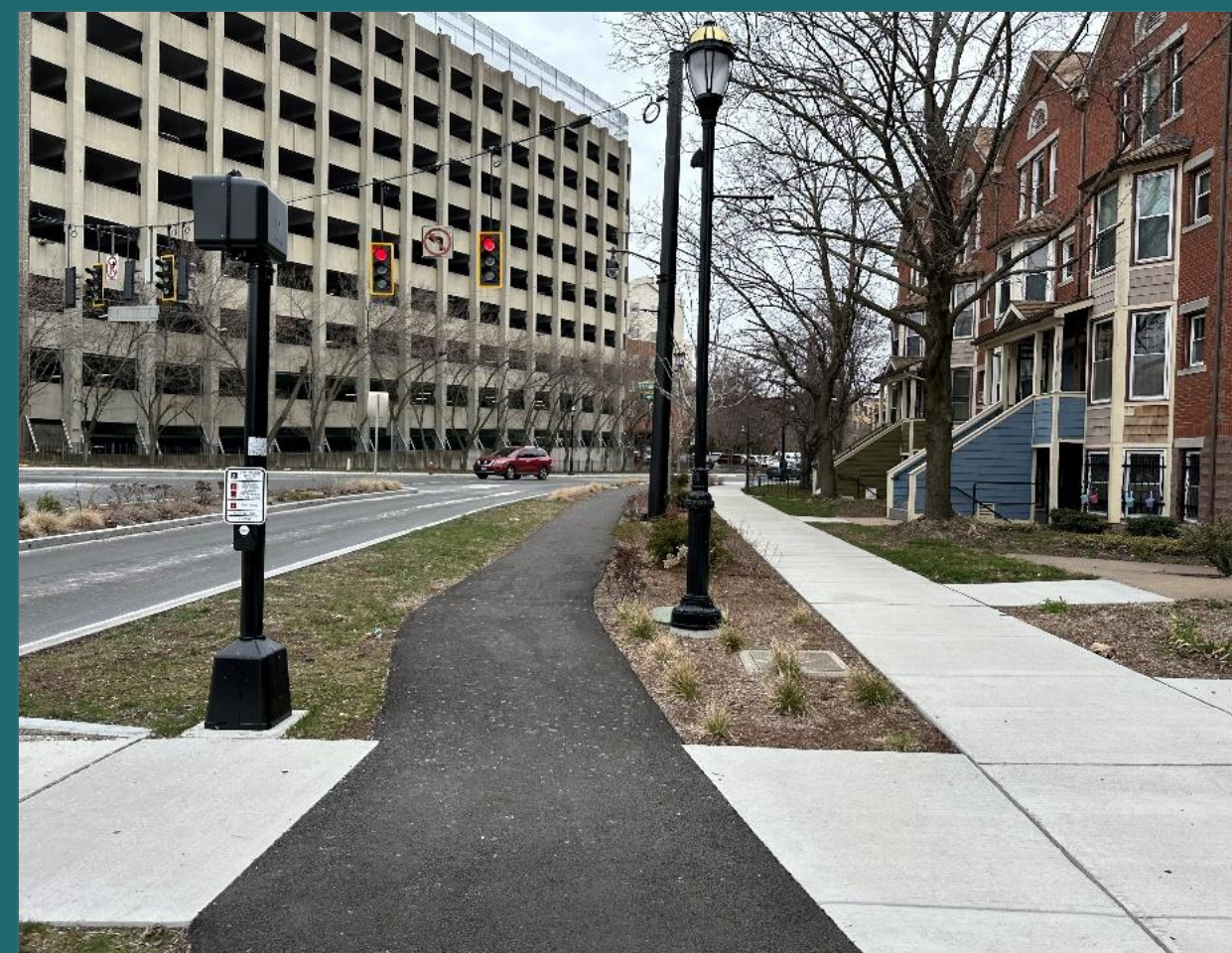


Blackstone Greenway – RI



Elliott Bay Trail – Seattle

Examples



Maple Ave - Hartford



Wethersfield Ave - Hartford

Examples



Cultural Trail – Indianapolis



Cambridge, MA

Examples



New Haven



Raised Cycletrack in Washington, DC

Examples



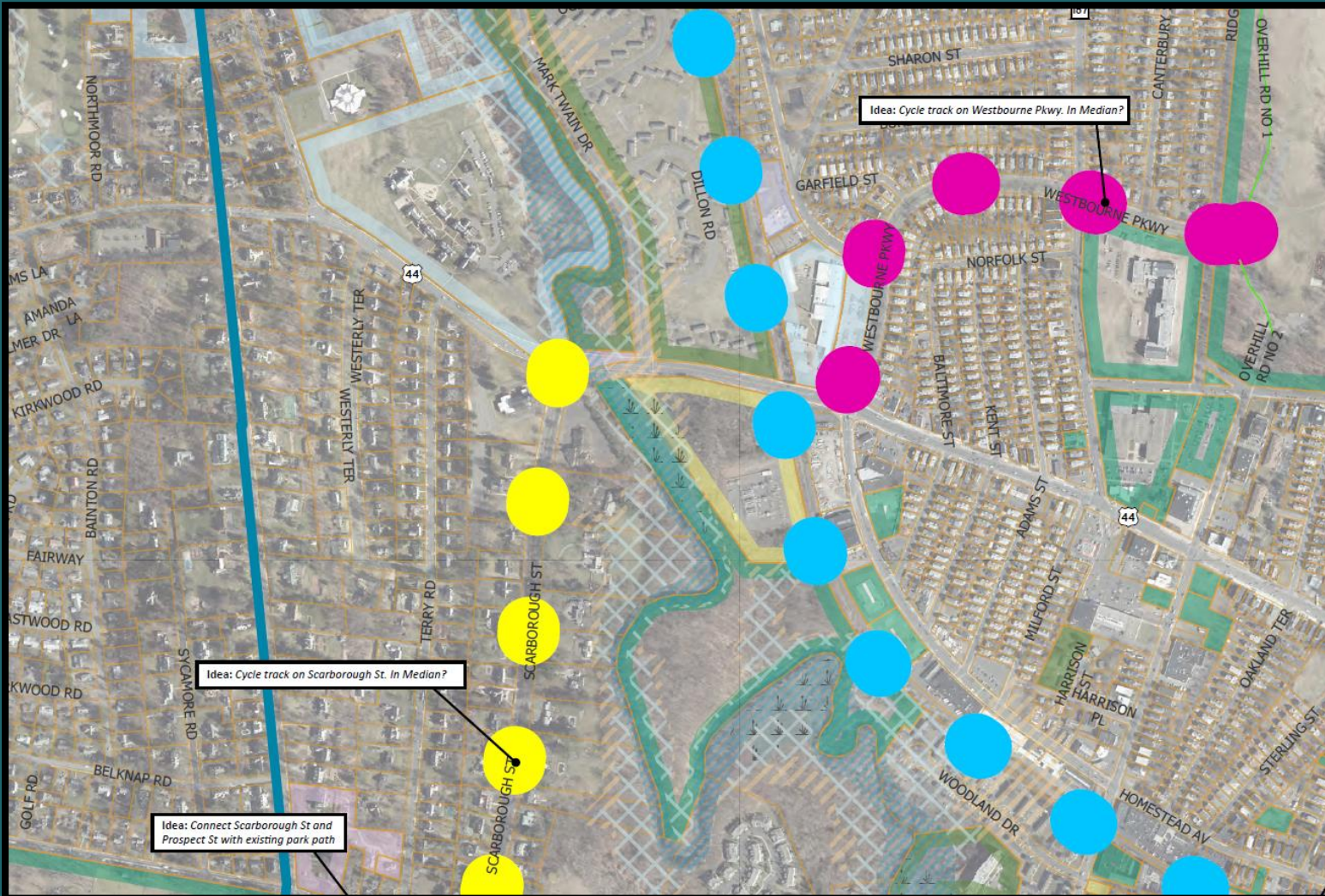
Photo: Jason Phillips / AllTrails

Route 44 underpass – Avon, CT



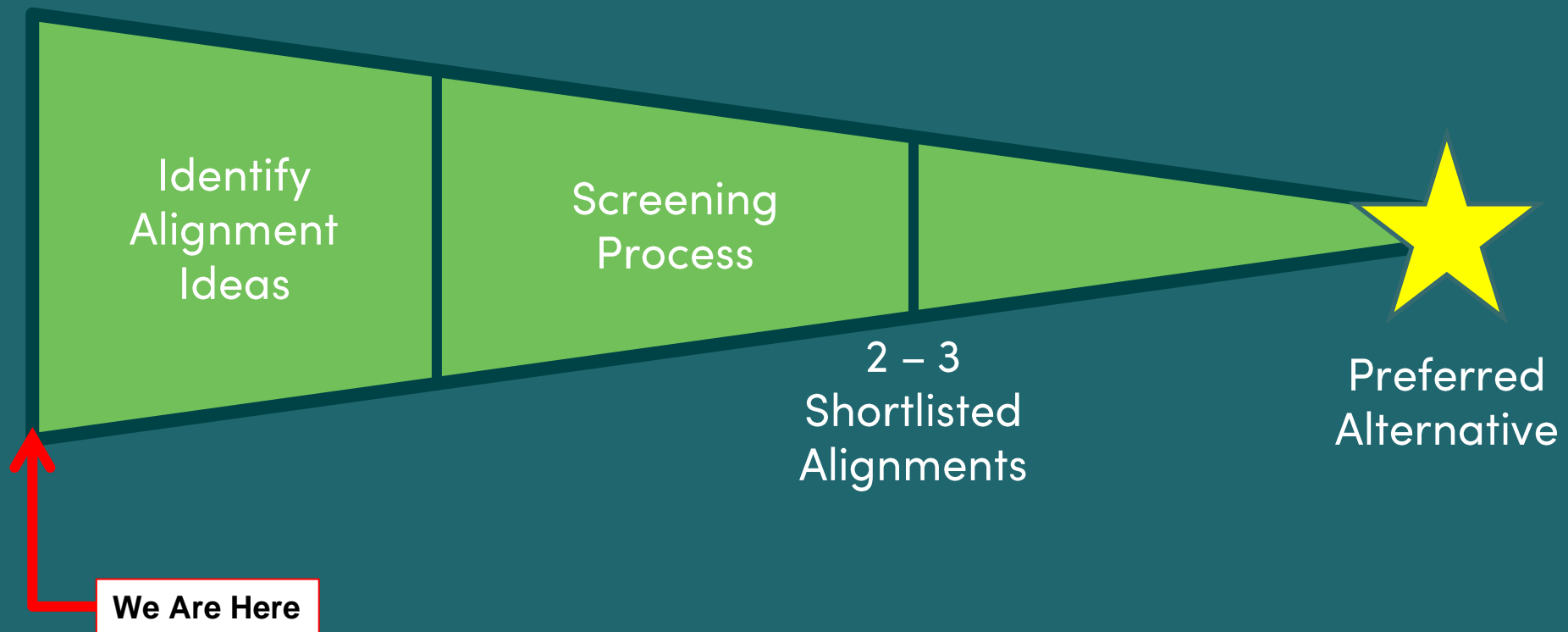
I-384 Exit Overpass, Bolton, CT

Routing Ideas



Additional details of these ideas are presented at the tables and online following this workshop!

Next Steps





Next Steps

Screening Process –
What do we prioritize in selecting a route?



Off-Road



Connectivity



Environment



Traffic Safety



Equity



Cost



Personal Security



Right-of-Way



Economic
Opportunity



Funding

- CTDOT has been committed to the closure of East Coast Greenway gaps
- We have seen this commitment extended to funding. For example, no local funds were utilized for the \$30 Million gap closure project in Plainville and New Britain (10.2 miles completing ECG and connecting to CTfastrak trail)

Workshop Activities



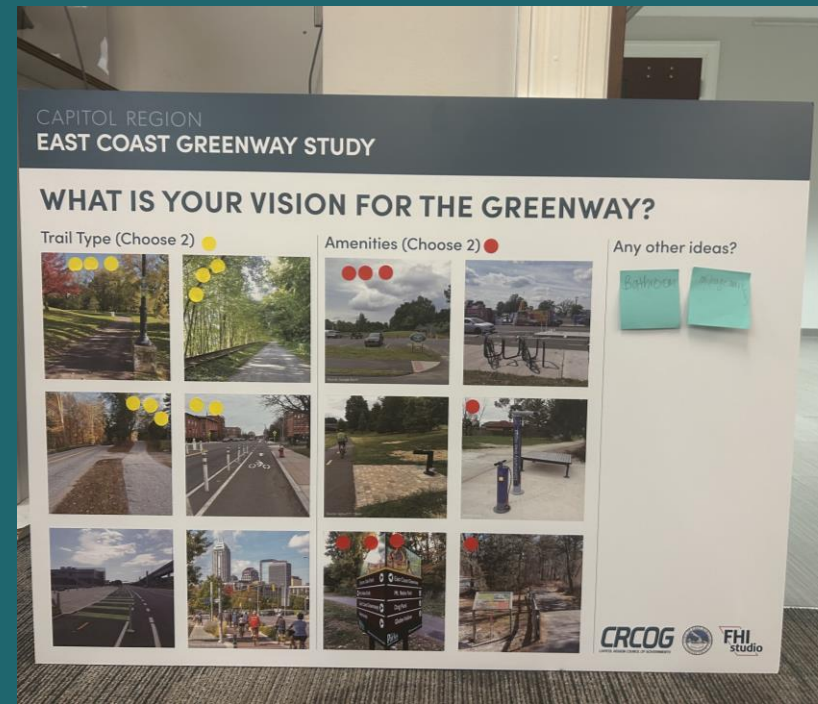


Workshop Activities

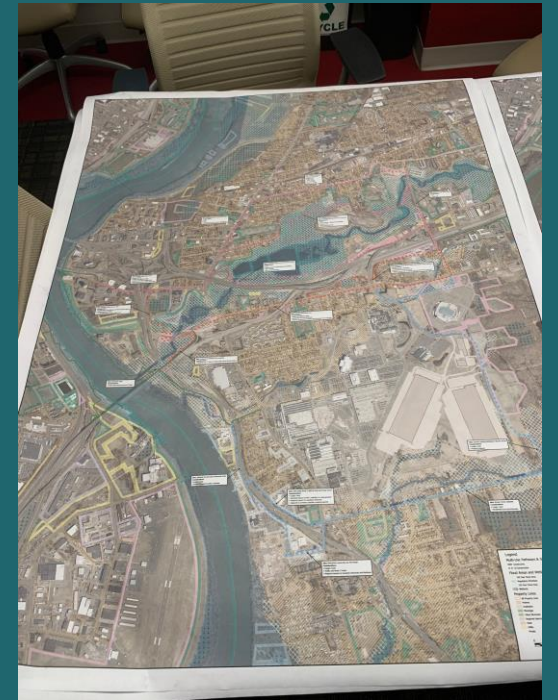
We want to hear from YOU!

- Discuss with project team at the boards and tables
- Submit your thoughts and comments
- All ideas are worth discussion!

Trail VISIONING



Trail ROUTING





Other Engagement Opportunities



Online Engagement



CRCOG ABOUT • SERVICES • GOVERNANCE / COMMITTEES • GENERAL PUBLIC • NEWS & EVENTS • Q

Capitol Region East Coast Greenway (ECG) Study



ABOUT THE STUDY

The Capitol Region Council of Governments (CRCOG) has initiated a study to identify the preferred alignment of the East Coast Greenway through the last remaining 12-mile gap in the Capitol Region in Simsbury, Bloomfield, Hartford, and East Hartford. The East Coast Greenway is an off-road walking and biking route stretching 3,000 miles from Maine to Florida. In Connecticut, the East Coast Greenway consists of a 200-mile route between the Rhode Island state line at Sterling, Connecticut and the New York state line at Greenwich. In Connecticut, the completed portions of the East Coast Greenway utilize a series of trails including the Air Line Trail, the Hop River Trail, and the Farmington Canal Trail.



crcog.org/capitol-region-ecg-study

Online Engagement



Map | **Satellite**

Windsor Locks | East Win | South Windsor | Windsor | Bloomfield | Avon | Farmington | West Hartford | Hartford | East Hartford | Wethersfield | Newington

WEST SIMSBURY | SIMSBURY | WEATOGUE | CLAY ARSENAL | ASTLEIGH HILL | WEST BULLWARD HISTORIC DISTRICT | SOUTH GREEN | BARRY SQUARE

GLASTONBURY CENTER

Google | Keyboard shortcuts | Map data ©2023 Google | Terms of Use | Report a map error

Capitol Region EAST COAST GREENWAY STUDY
Simsbury | Bloomfield | West Hartford | East Hartford

Please utilize this mapping tool to provide comment for 1) potential trail locations, and 2) key destinations or barriers which should be considered during this project. Please use the comment box directed to provide more information on each feature identified such as potential improvement to be made, planning history of a particular alignment or other relevant information.

Add a pin or line | All pins & lines

Add Pin | **Add Line**

Address Search
Search...

Legend

- Study Area
- Other Towns of Interest
- User Content**
 - User Pins (4)
 - User Lines (1)
- East Coast Greenway Alignment**
 - On-Road Routing
 - Trail
 - Trail, Unpaved
 - Transit or Ferry
- Multi-Use Pathways & Sidepaths**
 - Constructed

SHARE YOUR THOUGHTS

Want to stay involved and find out about the latest opportunity to participate? Join our interested parties list, by filling out this **FORM**.

CRCOG is interested in your thoughts about the remaining gaps. Please submit comments using the interactive map, link below:

INTERACTIVE MAP



crcog.org/capitol-region-ecg-study

Other Workshops

Bloomfield

Wednesday, April 26th, 2023. 4 – 7 pm

Alvin and Beatrice Wood Human Services Center
330 Park Avenue, Bloomfield





Future Engagement

Summer 2023

- Community Pop-up Events
- 1-on-1 Stakeholder Meetings
- Online Engagement via Website
- Email and Newsletters

What?

- Screening evaluation of all options considered
- Visualizations and additional detail of Top 2 - 3 Alignments
- In-person site visits with stakeholders on Top 2 - 3 Alignments

Winter 2023-2024

- Final Public Meetings
- Town Council Meetings / Approval

What?

- Review of project process
- Summary of report recommendations

Thank You!

Parker Sorenson, PE
psorenson@fhistudio.com
860-256-4905

Caitlin Palmer, AICP
cpalmer@crcog.org
CRCOG

