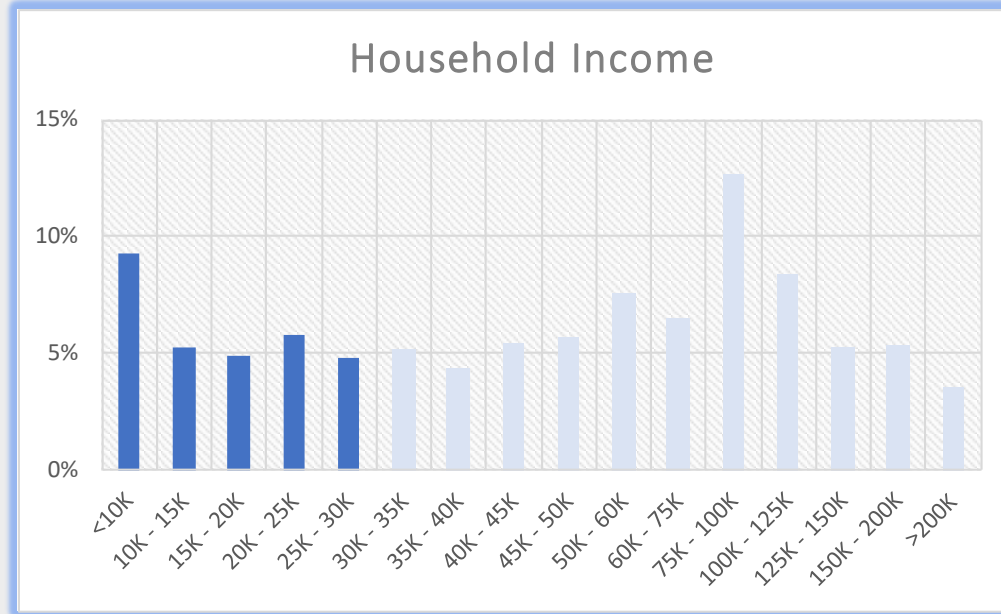
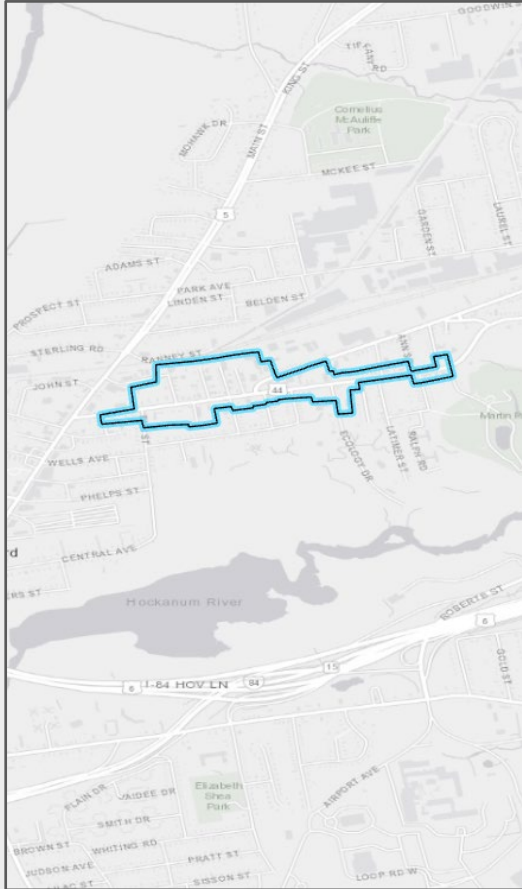


EAST HARTFORD, CT - Geofence

Burnside Avenue Business Employees

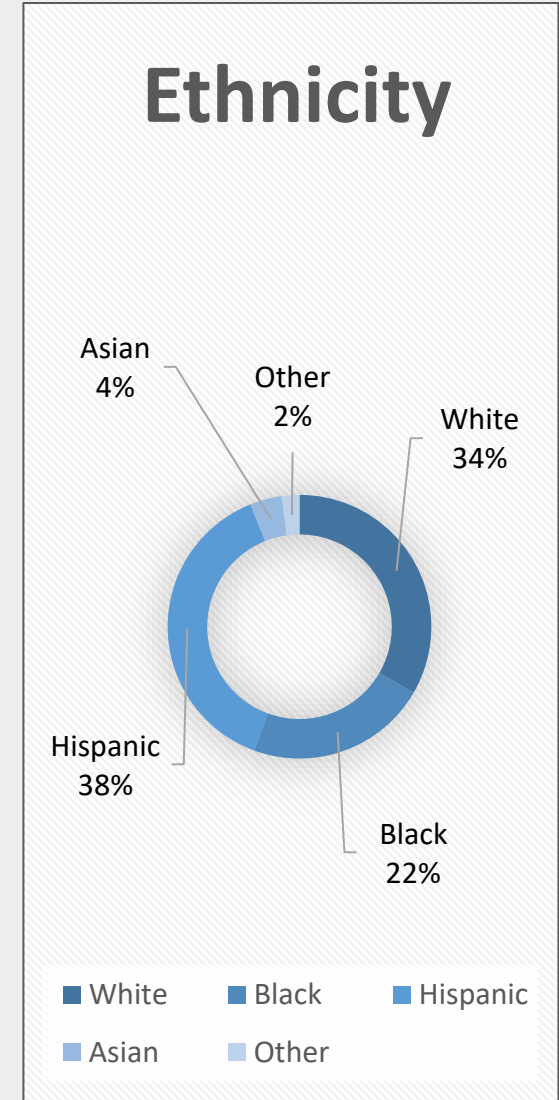
Burnside Avenue Business District Geofence

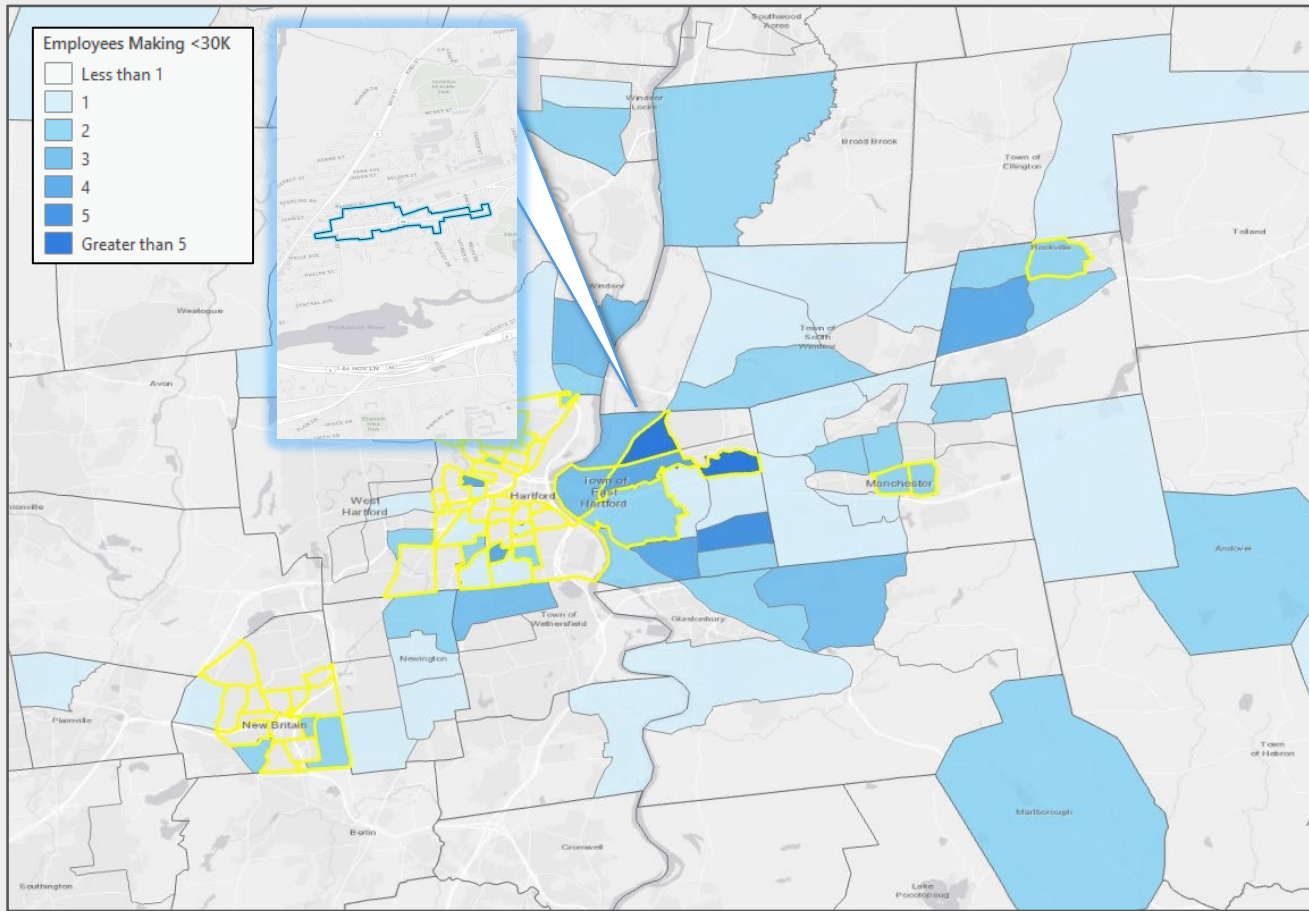


30.1%

of Employees on Burnside Avenue earn below the ALICE Single Adult and Single Senior Survival Budget, as represented by the dark blue bars.

*Household size of employees was unavailable. Single Adult and Single Senior sectors were chosen to represent the minimum percentage of the employment base that qualifies as ALICE.





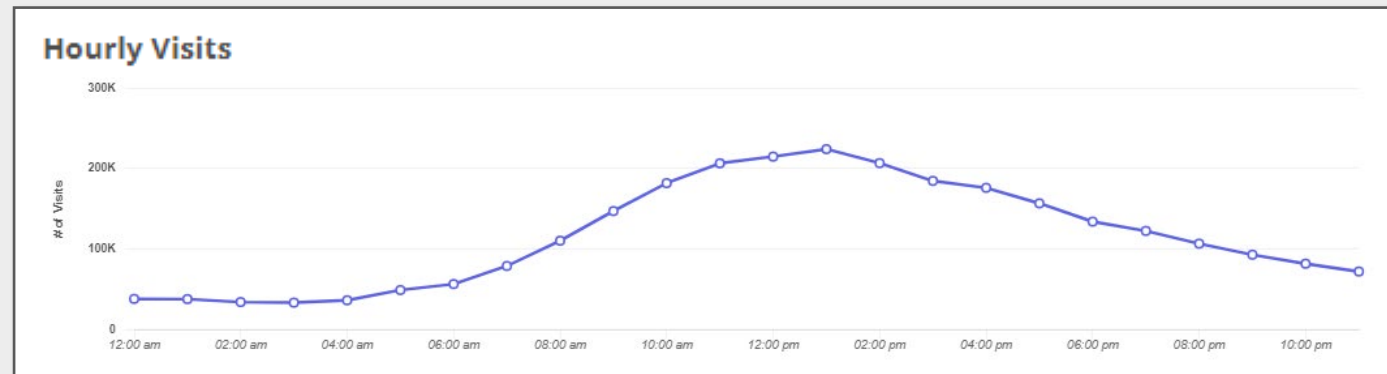
Burnside Avenue East Hartford Area Employees

42.0%
of Employees on Burnside Avenue
make less than \$30,000 annually.

Home Locations of Area Employees

Source: Census OnTheMap, ArcGIS

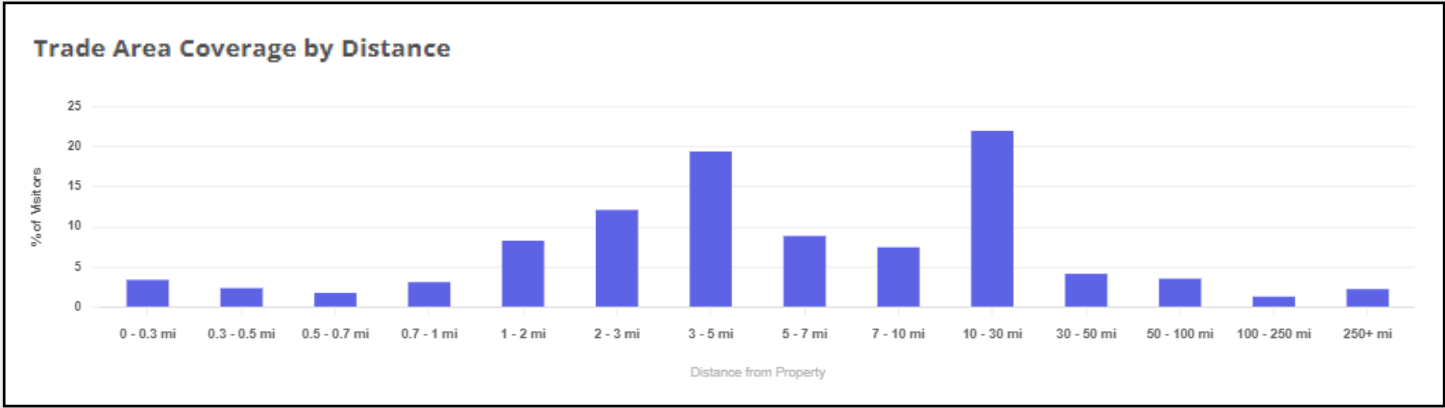
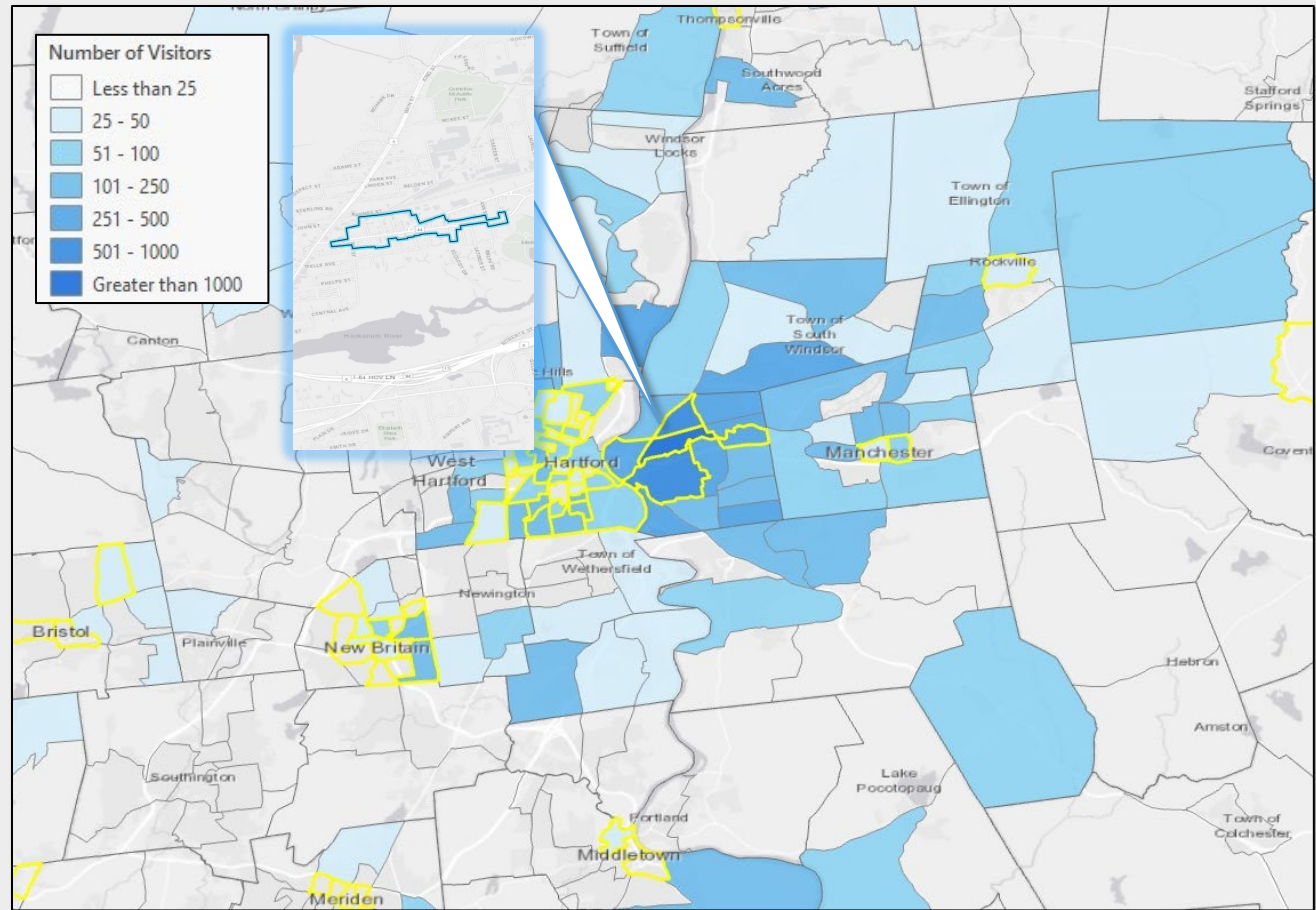
Tracts highlighted in yellow
are low-and-moderate
income Census Tracts



Source: Placer.ai, Visitation Data for Employees and Visitors in the Past 12-Months

Burnside Avenue East Hartford Retail Visitors

43.2%
of Visitors to Burnside Avenue
Businesses come from low- and
moderate-income Census Tracts.



Home Locations of Area Visitors
Source: Placer.ai, ArcGIS

Tracts highlighted in yellow
are low-and-moderate
income Census Tracts

Source: Placer.ai, Visitation Data for Visitors in the Past 12-Months