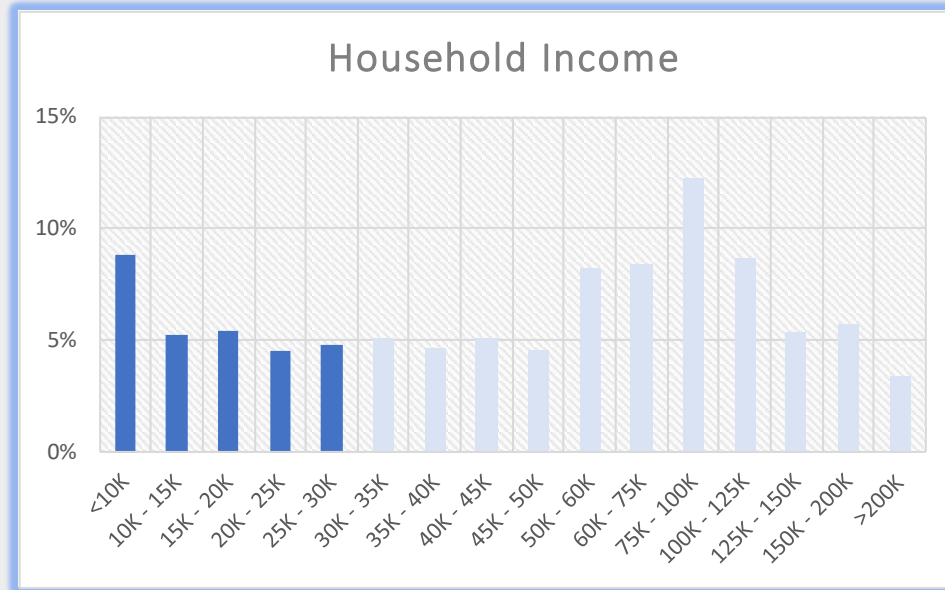
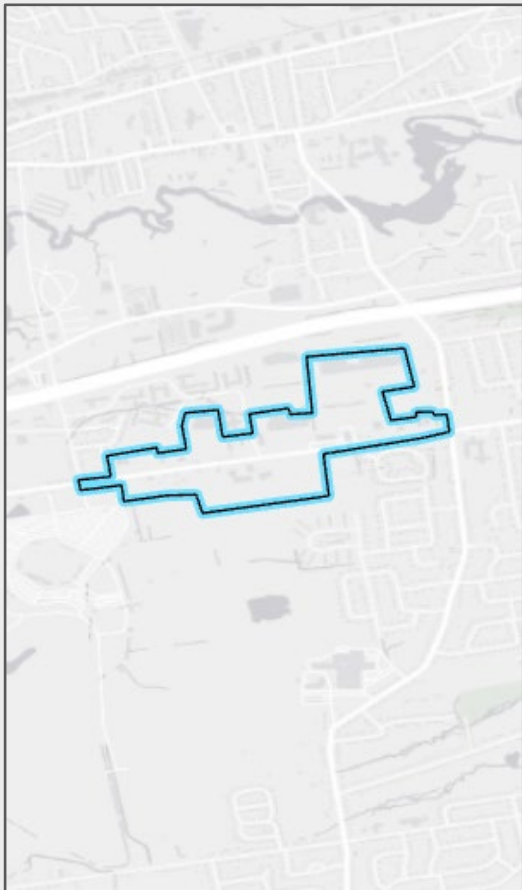


EAST HARTFORD, CT - Geofence

Silver Lane Business Employees

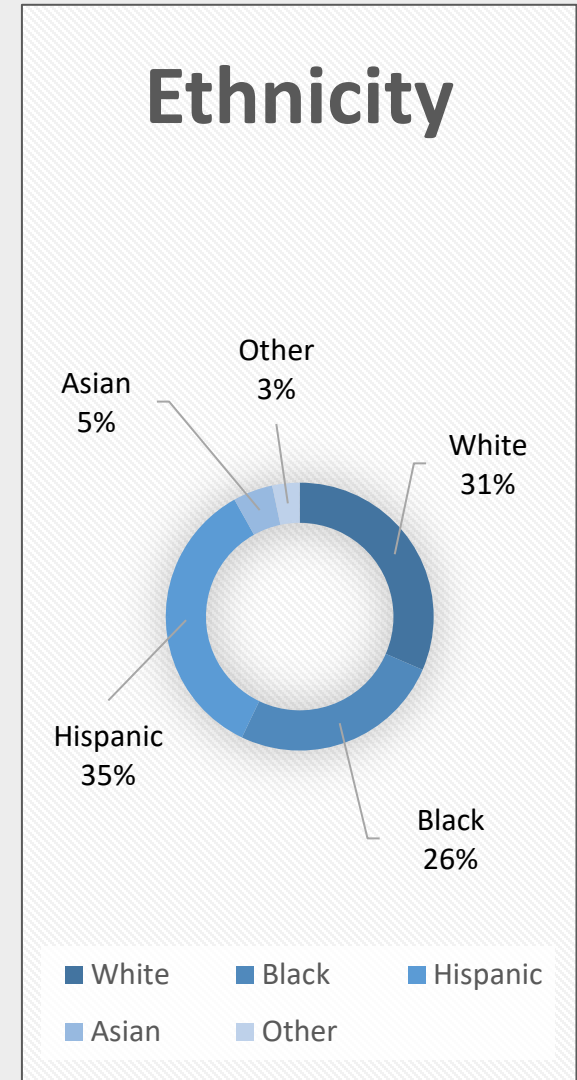
Silver Lane Business District Geofence

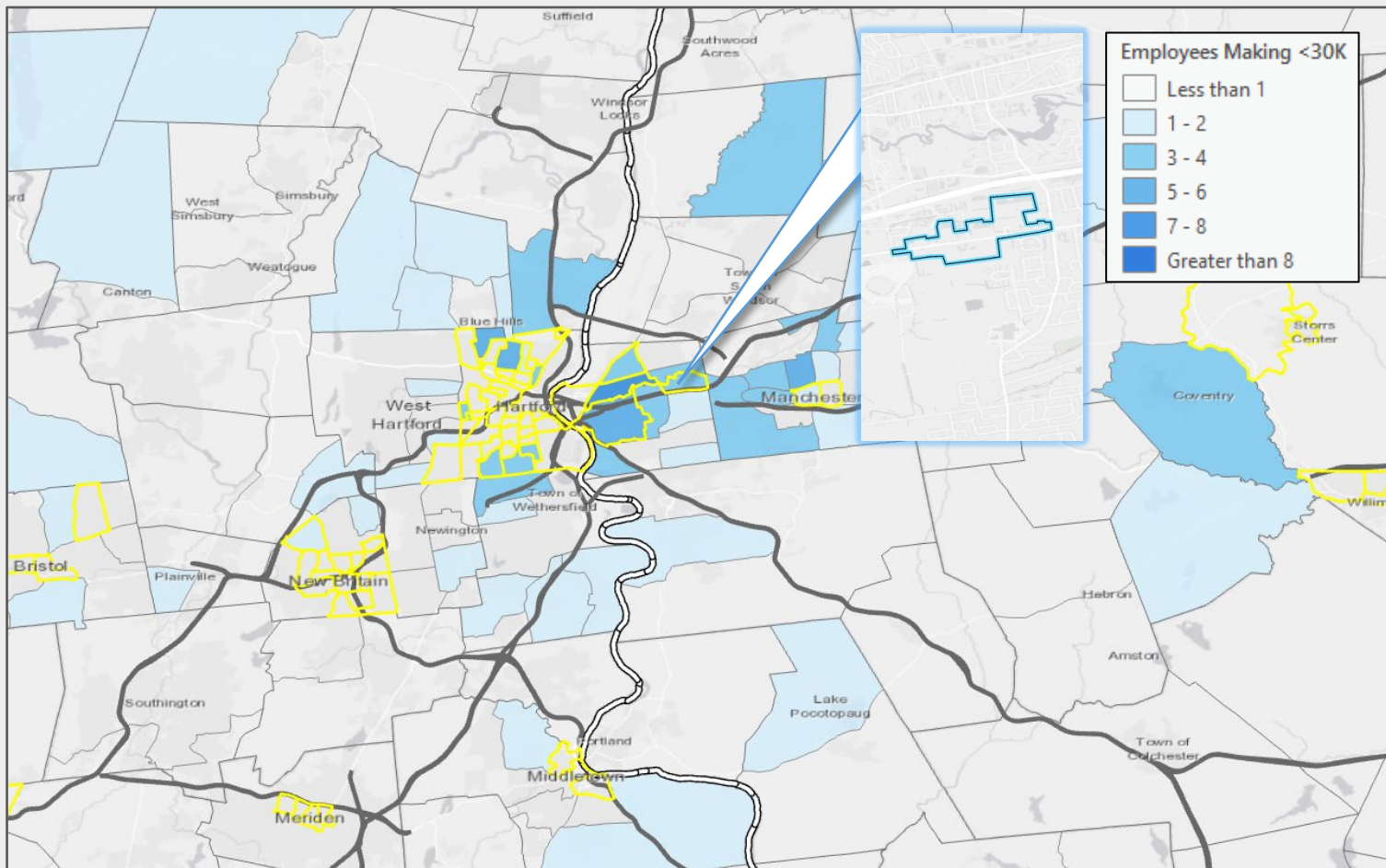


29%

of Employees on Silver Lane earn below the ALICE Single Adult and Single Senior Survival Budget, as represented by the dark blue bars.

*Household size of employees was unavailable. Single Adult and Single Senior sectors were chosen to represent the minimum percentage of the employment base that qualifies as ALICE.





Silver Lane East Hartford Area Employees

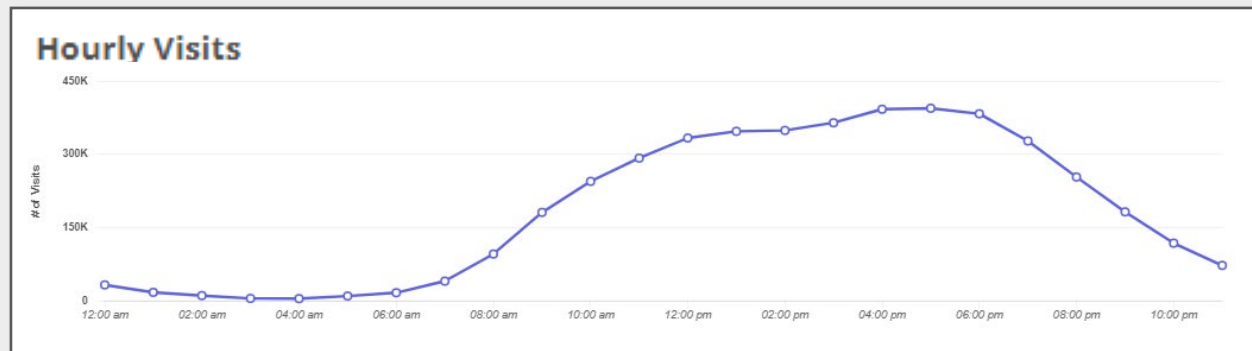
25.1%

of Employees on Silver Lane
make less than \$30,000 annually.

Home Locations of Area Employees

Source: Census OnTheMap, ArcGIS

Tracts highlighted in yellow
are low-and-moderate
income Census Tracts

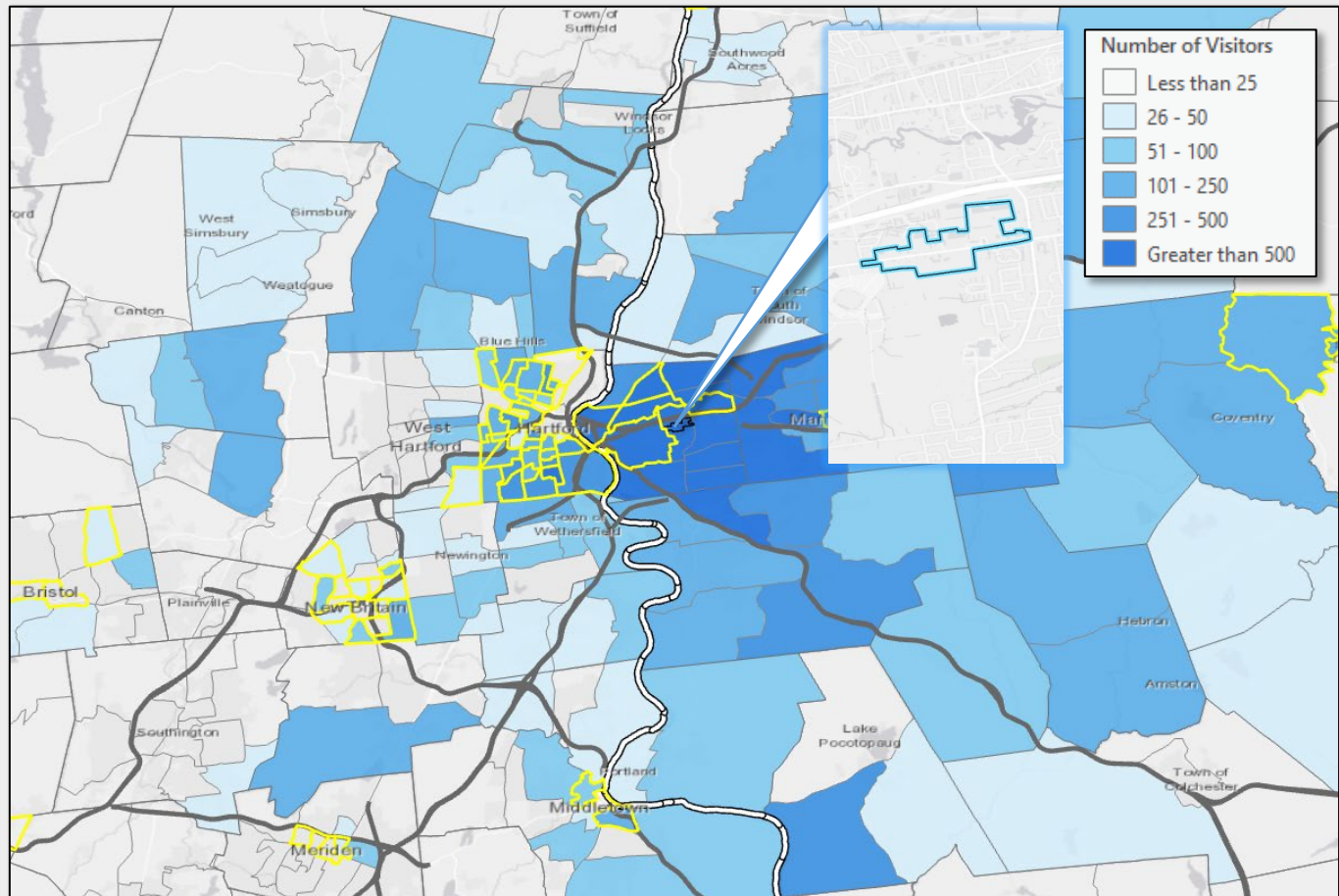


Source: Placer.ai, Visitation Data for Employees and Visitors in the Past 12-Months

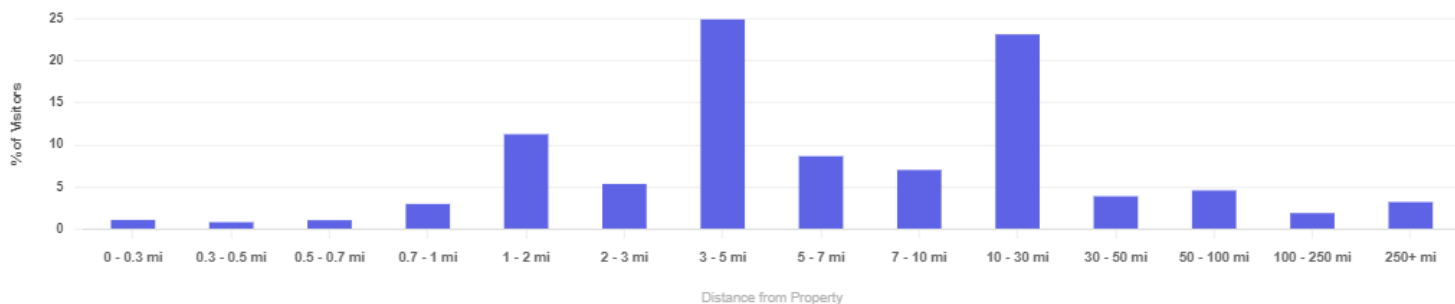
Silver Lane East Hartford Retail Visitors

42.4%

of Visitors to Silver Lane Businesses
come from low- and moderate-
income Census Tracts.



Trade Area Coverage by Distance



Home Locations of Area Visitors
Source: Placer.ai, ArcGIS

Tracts highlighted in yellow
are low-and-moderate
income Census Tracts