

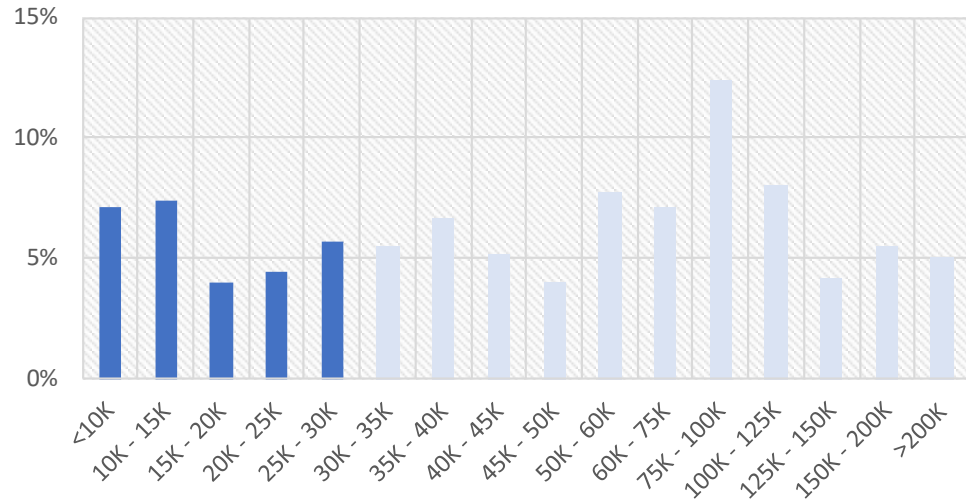
HARTFORD, CT - Geofence

Silas Deane Hwy Business Employees

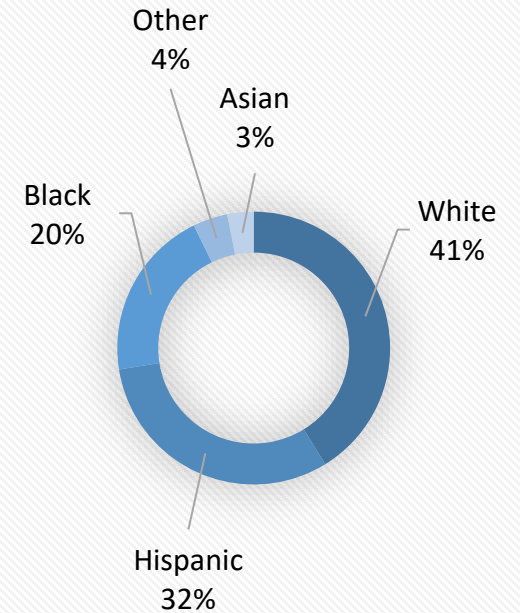
Silas Deane Hwy Business District Geofence



Household Income



Ethnicity

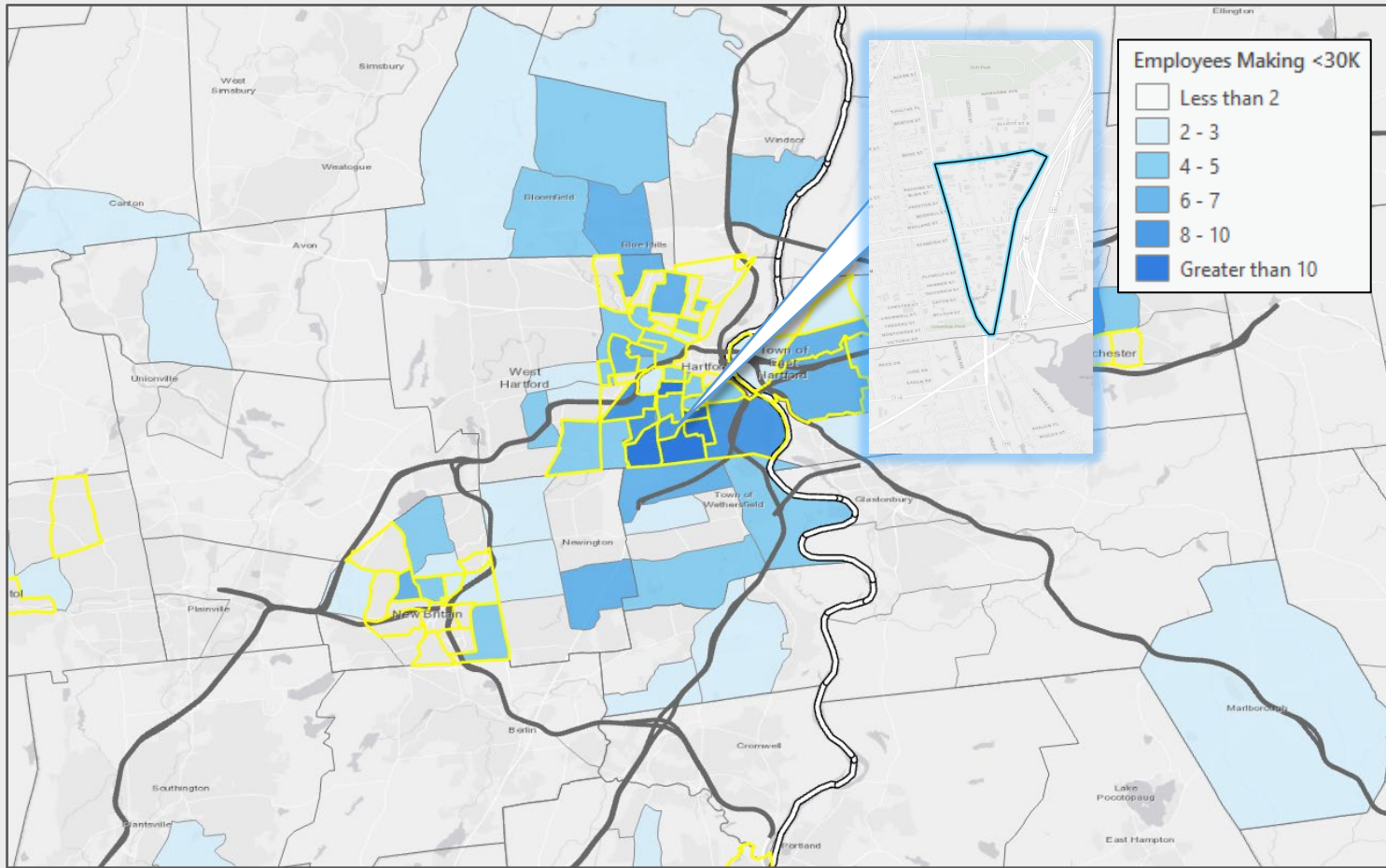


29%

of Employees on Silas Deane Highway earn below the ALICE Single Adult and Single Senior Survival Budget, as represented by the dark blue bars.

*Household size of employees was unavailable. Single Adult and Single Senior sectors were chosen to represent the minimum percentage of the employment base that qualifies as ALICE.

- White
- Hispanic
- Black
- Other
- Asian



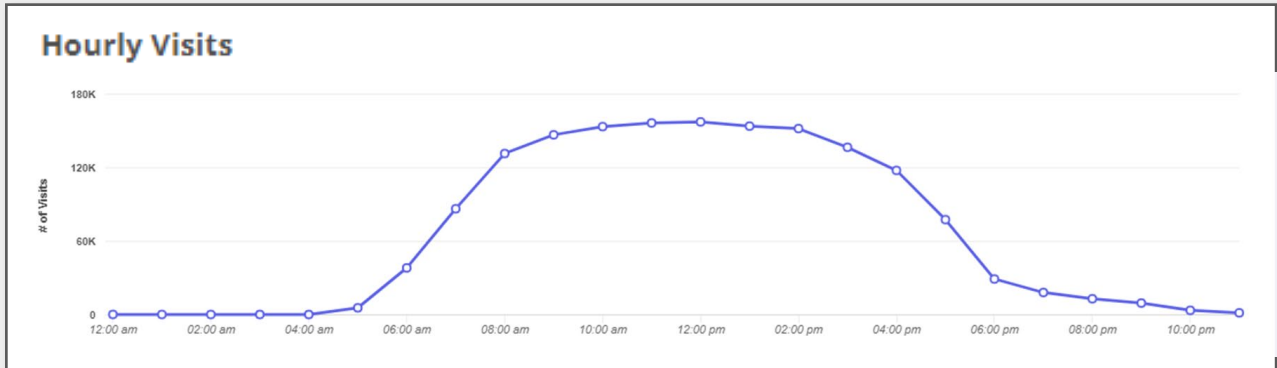
Silas Deane Hwy Area Employees

46.7%
of Employees on Silas Deane Hwy
make less than \$30,000 annually.

Home Locations of Area Employees

Source: Census OnTheMap, ArcGIS

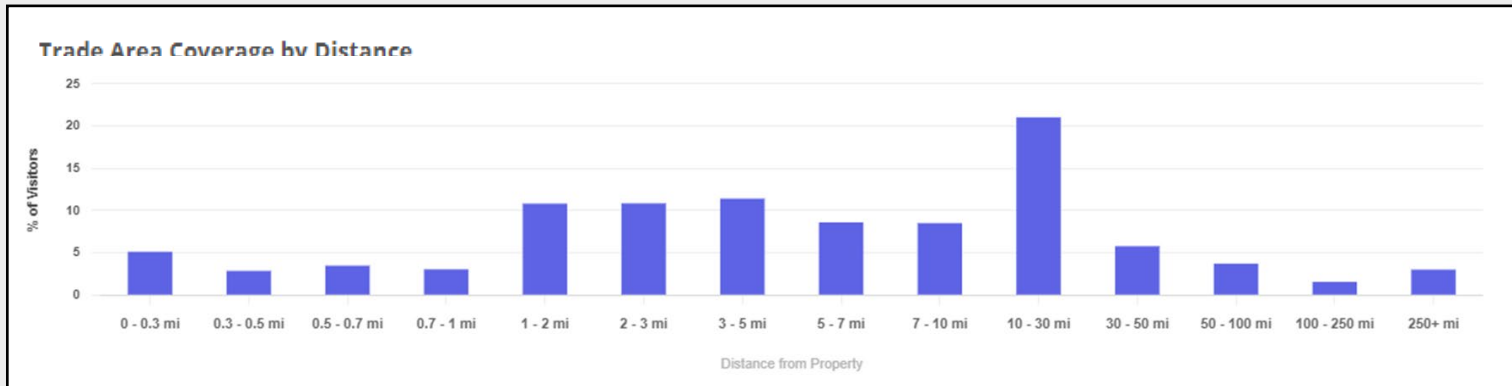
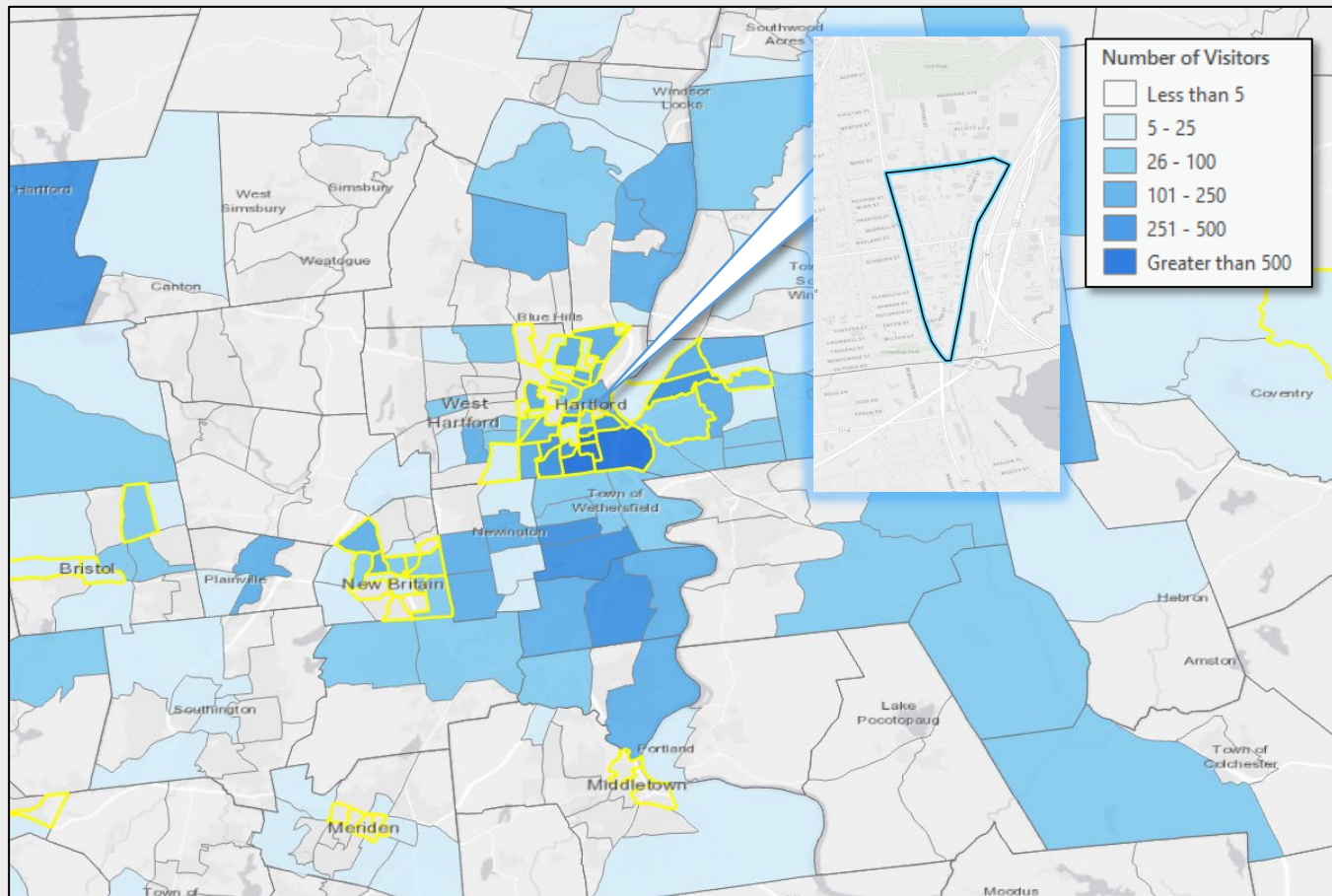
Tracts highlighted in yellow
are low-and-moderate
income Census Tracts



Source: Placer.ai, Visitation Data for Employees in the Past 12-Months

Silas Deane Hwy Retail Visitors

46.2%
of Visitors to Silas Deane Hwy
Businesses come from low- and
moderate-income Census Tracts.



Home Locations of Area Visitors
Source: Placer.ai, ArcGIS

Tracts highlighted in yellow
are low-and-moderate
income Census Tracts

Source: Placer.ai, Visitation Data for Visitors in the Past 12-Months