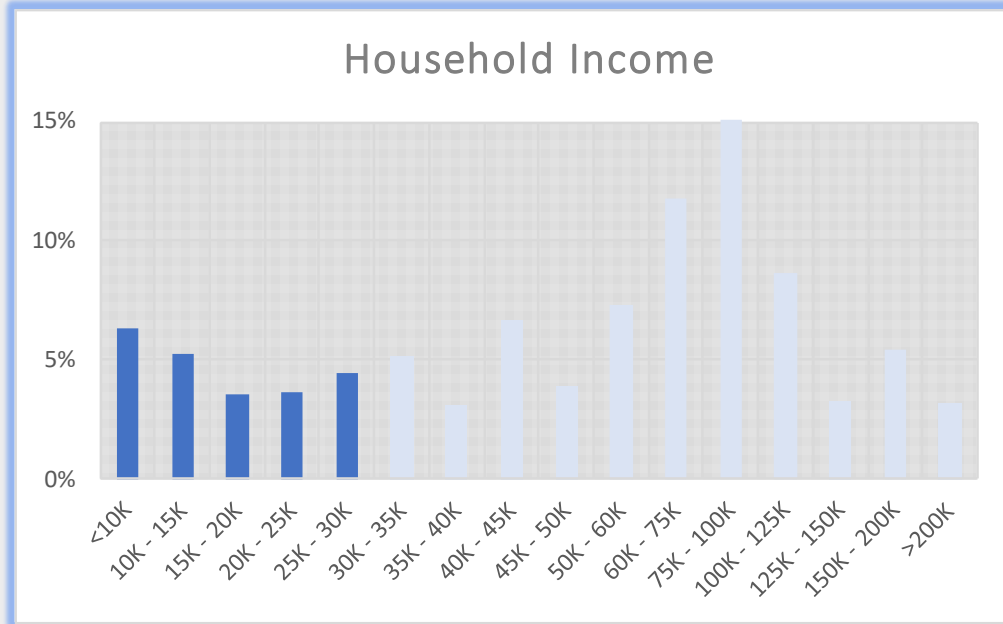
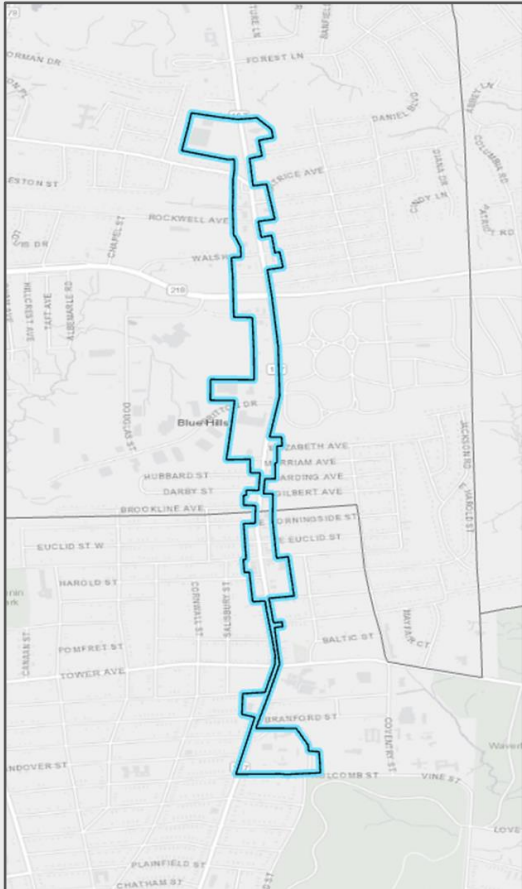


# HARTFORD/BLOOMFIELD CT - Geofence

## Blue Hills Avenue Business Employees

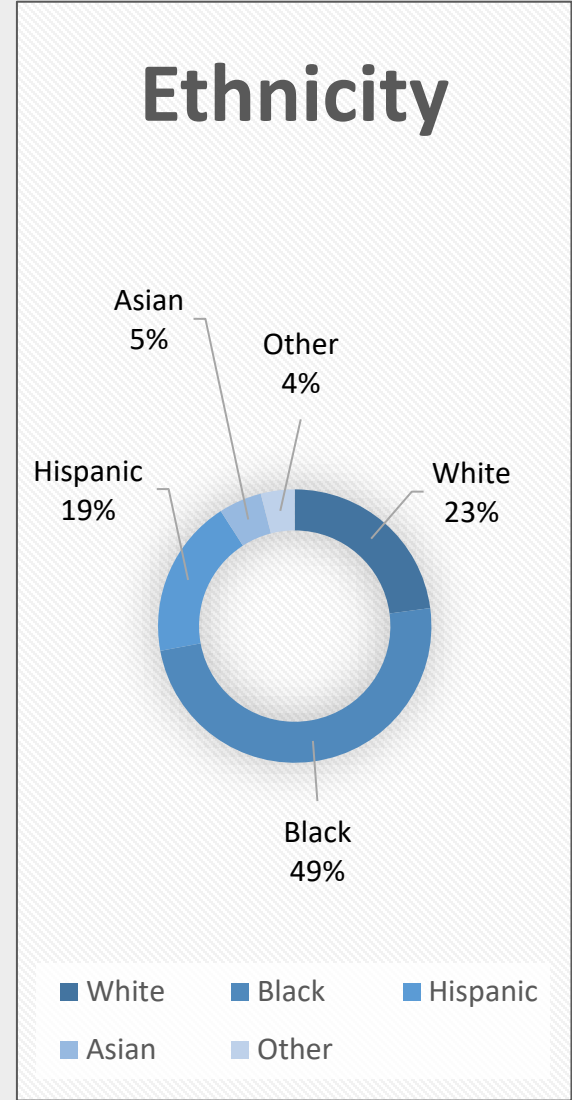
### Blue Hills Avenue Business District Geofence

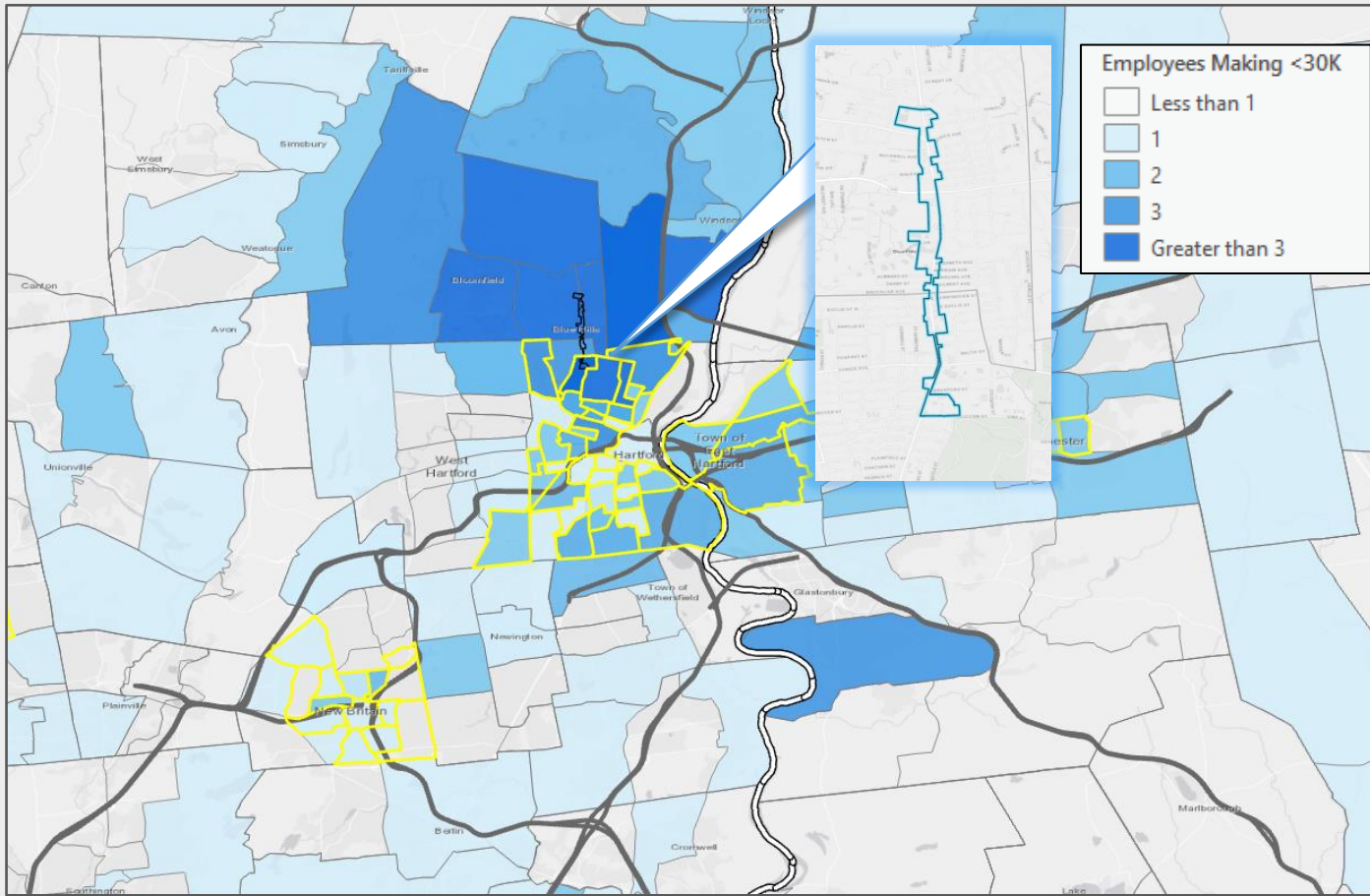


23%

of Employees on Blue Hills Avenue earn below the ALICE Single Adult and Single Senior Survival Budget, as represented by the dark blue bars.

\*Household size of employees was unavailable. Single Adult and Single Senior sectors were chosen to represent the minimum percentage of the employment base that qualifies as ALICE.





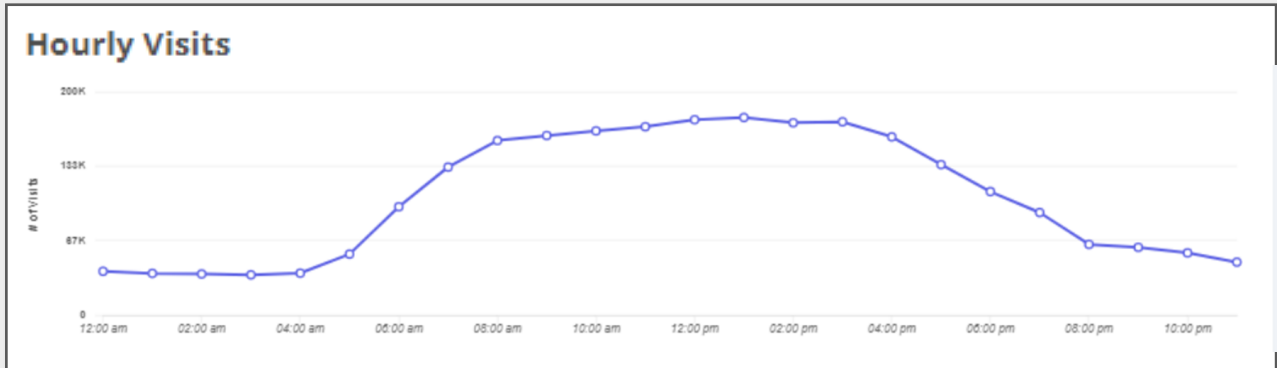
# Blue Hills Avenue Hartford/Bloomfield Area Employees

**57.8%**  
of Employees on Blue Hills Avenue  
make less than \$30,000 annually.

Home Locations of Area Employees

Source: Census OnTheMap, ArcGIS

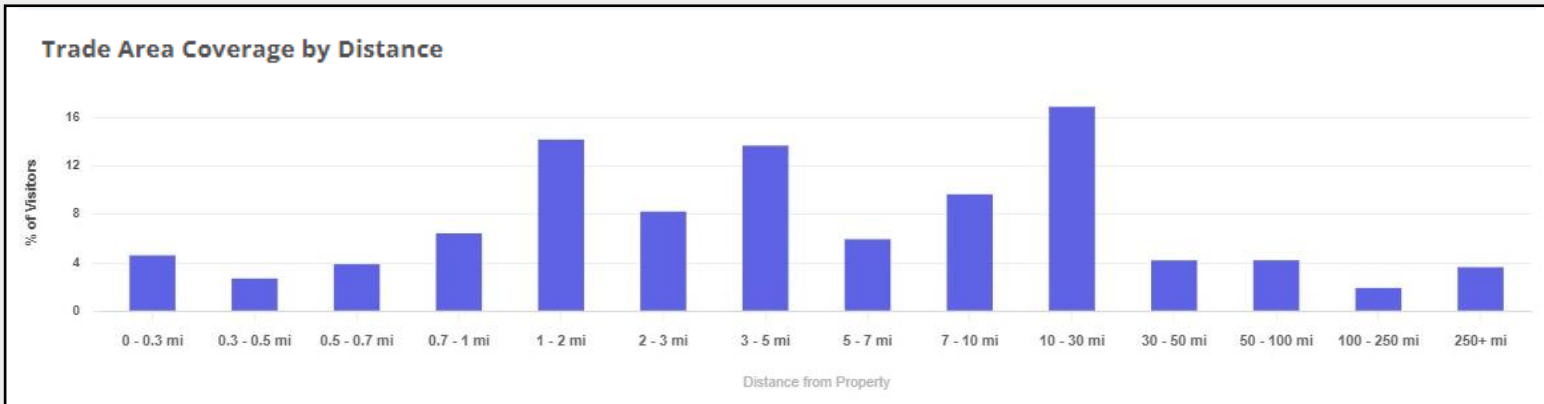
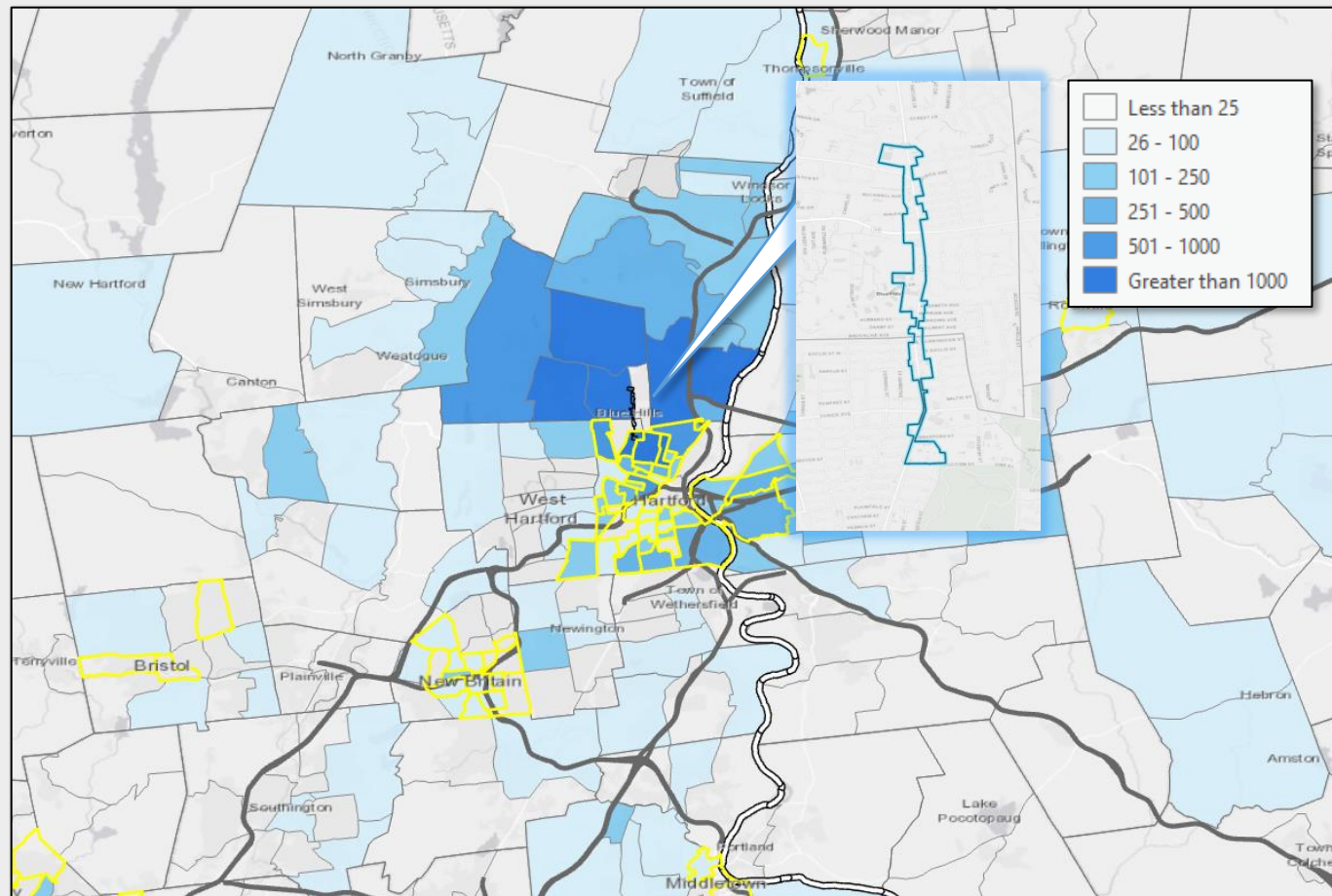
Tracts highlighted in yellow  
are low-and-moderate  
income Census Tracts



Source: Placer.ai, Visitation Data for Employees in the Past 12-Months

# Blue Hills Avenue Hartford/Bloomfield Retail Visitors

**38.5%**  
of Visitors to Blue Hills Avenue  
Businesses come from low- and  
moderate-income Census Tracts.



Home Locations of Area Visitors  
Source: Placer.ai, ArcGIS

Tracts highlighted in yellow  
are low-and-moderate  
income Census Tracts

Source: Placer.ai, Visitation Data for Visitors in the Past 12-Months