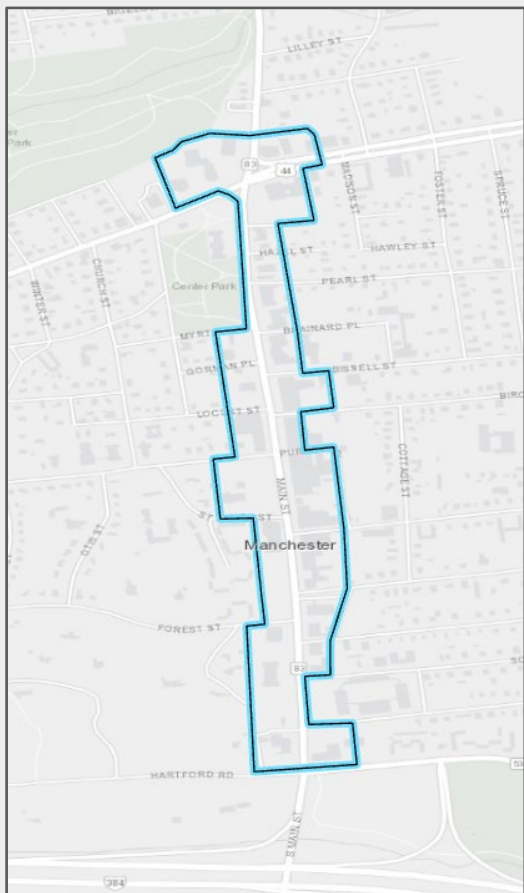


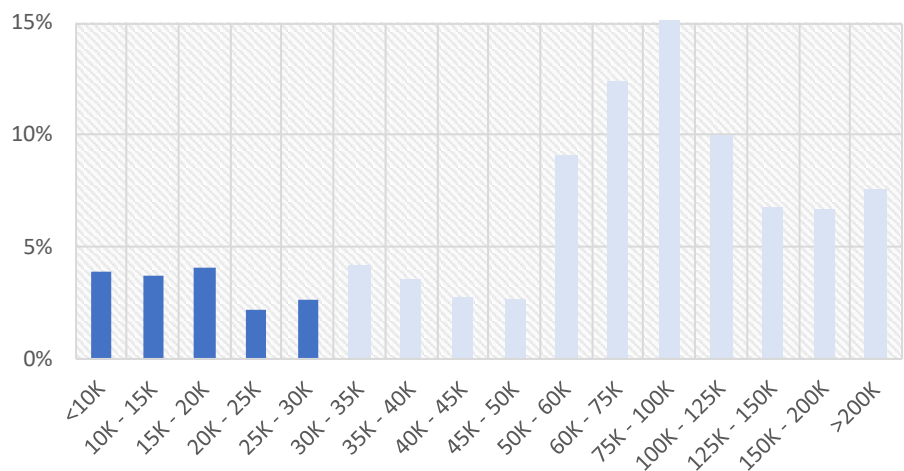
MANCHESTER, CT - Geofence

Main Street Business Employees

Main Street Business District Geofence



Household Income

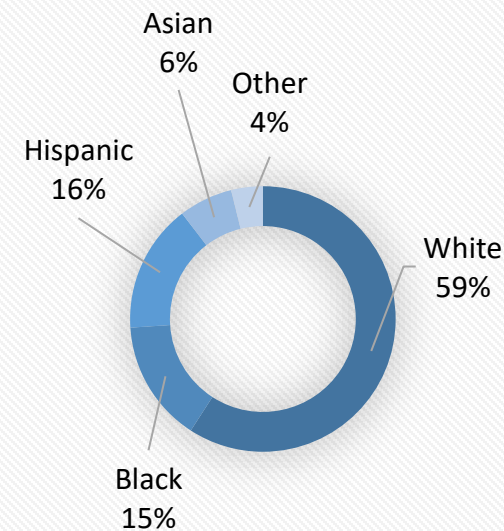


17%

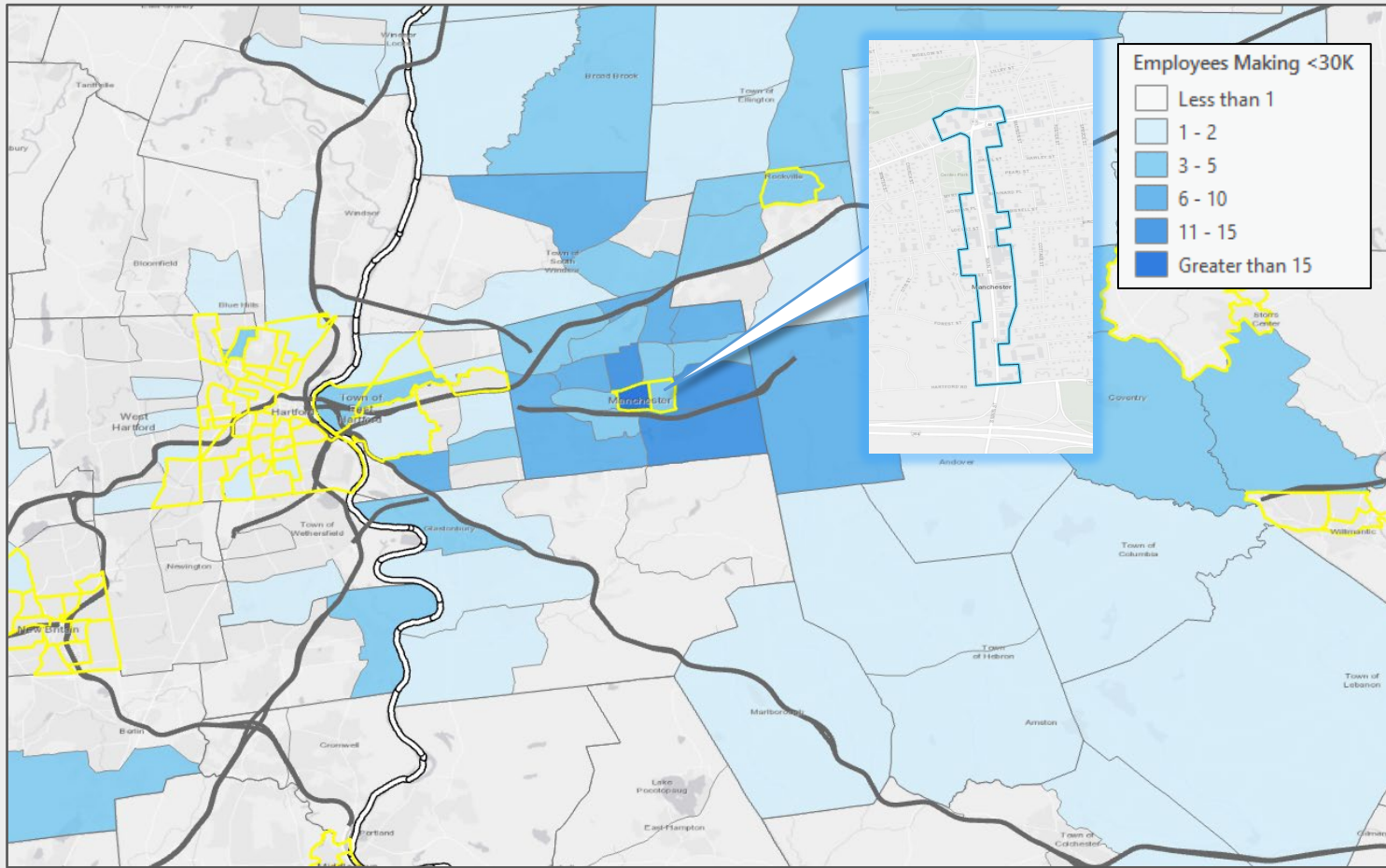
of Employees on Main Street earn below the ALICE Single Adult and Single Senior Survival Budget, as represented by the dark blue bars.

*Household size of employees was unavailable. Single Adult and Single Senior sectors were chosen to represent the minimum percentage of the employment base that qualifies as ALICE.

Ethnicity



■ White ■ Black ■ Hispanic
■ Asian ■ Other



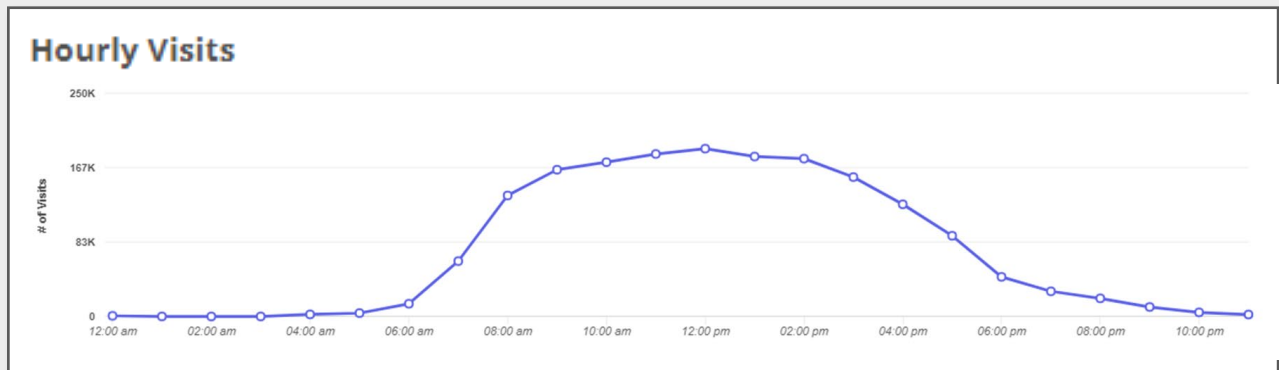
Main Street Manchester Area Employees

39.5%
of Employees on Main Street
make less than \$30,000 annually.

Home Locations of Area Employees

Source: Census OnTheMap, ArcGIS

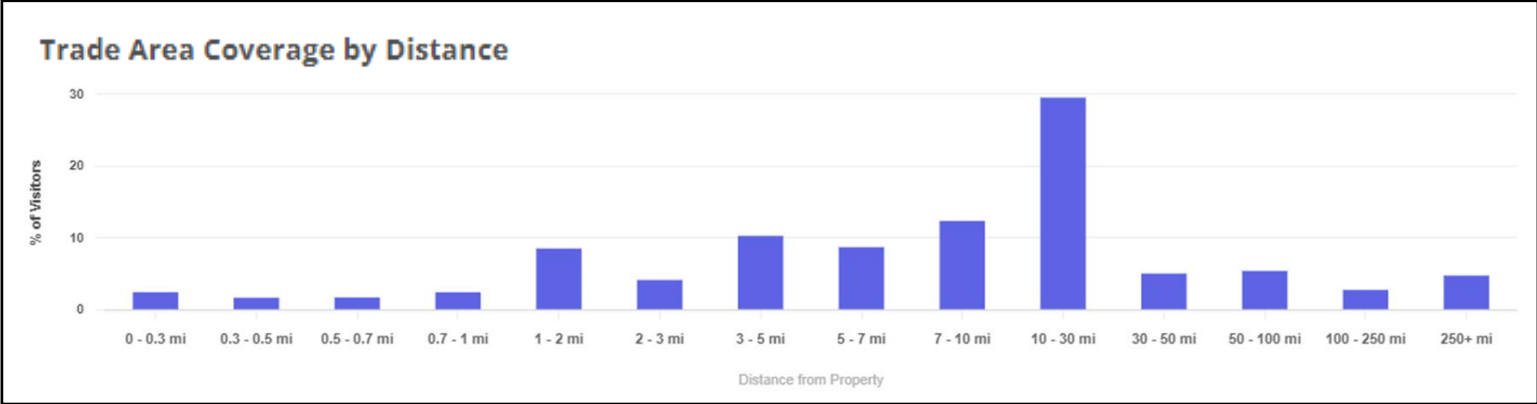
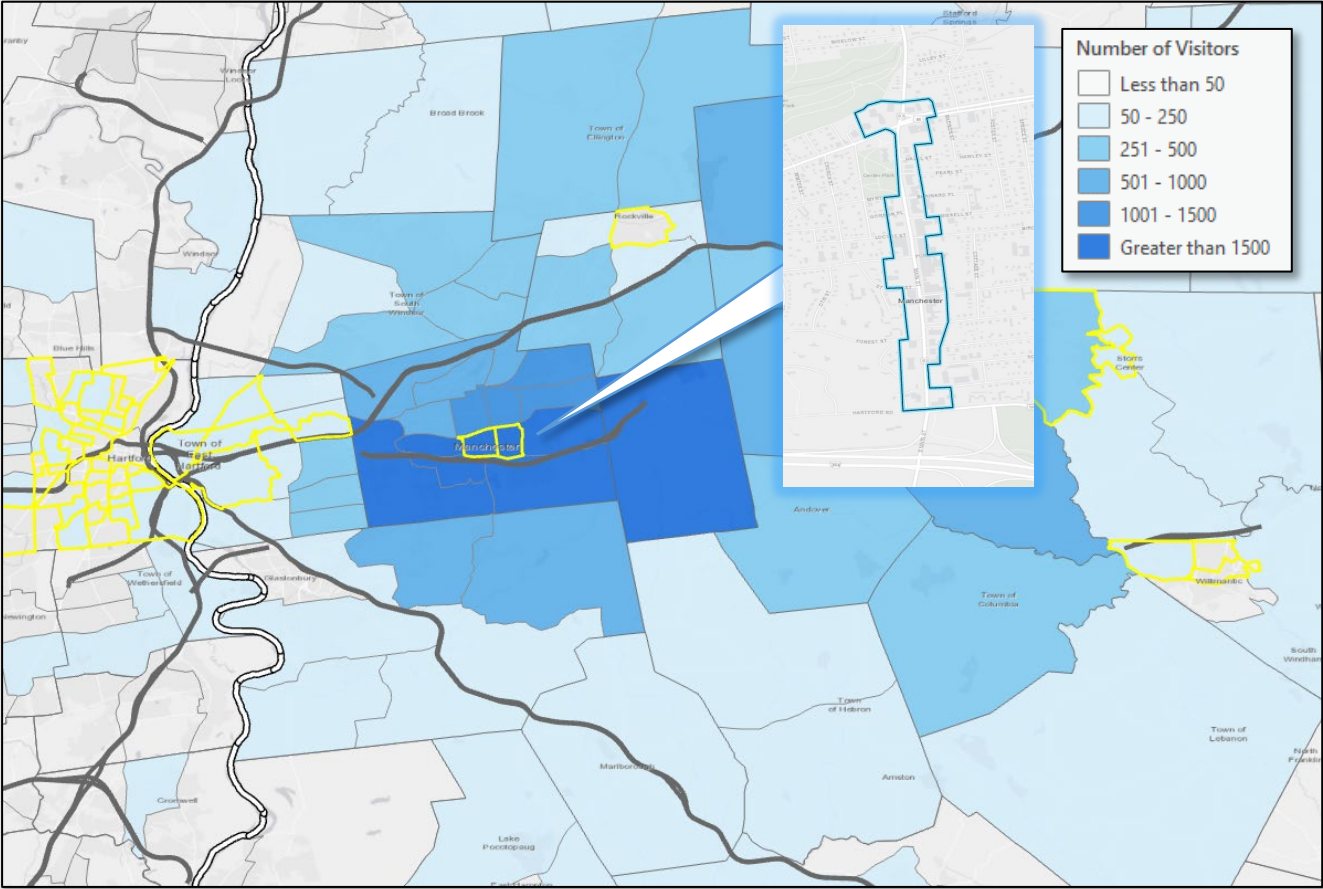
Tracts highlighted in yellow
are low-and-moderate
income Census Tracts



Source: Placer.ai, Visitation Data for Employees in the Past 12-Months

Main Street Manchester Retail Visitors

17.7%
of Visitors to Main Street
Businesses come from low- and
moderate-income Census Tracts.



Home Locations of Area Visitors
Source: Placer.ai, ArcGIS

Tracts highlighted in yellow
are low-and-moderate
income Census Tracts

Source: Placer.ai, Visitation Data for Visitors in the Past 12-Months