

ENFIELD SQUARE MALL

Traffic Impact Study

WHAT'S NEW

PUBLIC MEETING OCTOBER 3

6-7pm at Enfield Town Hall, Scitico Room
Or join this meeting virtually at:
<https://youtube.com/live/PMdUez1mQNQ>

A public meeting is being held for the public to ask questions and give feedback on the Final Enfield Traffic Impact Study.

DRAFT STUDY POSTED




The Final Enfield Traffic Impact Study draft report is available on the project website at:
<https://crcog.org/enfield-traffic-impact-study/>

The public comment period opened September 23 and will close on October 26. The final report will incorporate received feedback.

ABOUT THE STUDY

The Enfield Traffic Impact Study is nearing completion. The study began in 2021 with the goal of evaluating traffic, congestion, safety, and roadway implications for a potential future redevelopment of the Enfield Square Mall. The Final Study includes findings from the initial Market Analysis Study and the Visual Preference Survey as well as potential traffic mitigation options and recommendations.

Enfield Traffic Impact Study

-  Specific study intersections
-  Enfield Square Mall (redevelopment visioning site)
-  General project area (1/2 mile buffer)



Questions?

Please contact Caitlin Palmer at cpalmer@crcog.org for questions or to join our interested parties list.

Project Website available at <https://crcog.org/enfield-traffic-impact-study/>



BACKGROUND

The Study first evaluated existing safety and capacity deficiencies for 15 intersections, the majority of which are along Route 190 (Hazard Avenue) and Route 220 (Elm Street) corridors. Potential future development options were then identified through a Market Analysis as well as a Visual Preference Survey. The Market Analysis identified a mix of residential, entertainment, retail, and medical office uses as an economically viable redevelopment opportunity. The Visual Preference Survey gathered community feedback on desirability of potential uses and development by asking

participants to rate images reflecting themes of Building Density, Site Layout and Parking, Building Architecture, Building Heights, Residential Use, Entertainment Use, and Bicycle/Pedestrian Amenities. The results of the Market Analysis and Visual Preference Survey were used to identify a potential redevelopment scenario for the mall property and model future traffic impacts.

More information on the Market Analysis and Visual Preference Survey is available on the project website and in Newsletter 1.

TRAFFIC IMPACT STUDY

The Traffic Impact Study explored the following potential improvement options and offered recommendations based on their impacts.

Modify Mall Access (Western Driveway)

Access Options A and B (shown on the right) provide increased queuing space on Route 220 between the I-91 ramps and the mall, increase safety by reducing potential vehicle conflicts, and reduce required lanes which could lead to more space for bicyclists and pedestrians.

*Option A is **recommended** for its increased improvements to traffic flow and safety.*

Traffic Signal Timing Improvements

Three opportunities for mitigating traffic were found. 1) Revising all pedestrian crossings to concurrent rather than exclusive. 2) Improved vehicle detection for more responsive signal operations. 3) Revising phasing at the intersection of Freshwater Blvd and Route 220 to match the cycle lengths of the rest of the corridor. *It is **recommended** to implement each of these proposed improvements.*

Bicycle, Pedestrian, & Transit Facilities

The Visual Preference Survey guided recommendations for multi-modal facility additions. *An off-road shared-use path is **recommended** as well as additional bus shelters. Further study should be done to identify further opportunities for modal shift within the study area and for locating bicycle and transit infrastructure.*

Lane Reduction on Elm St (Route 220)

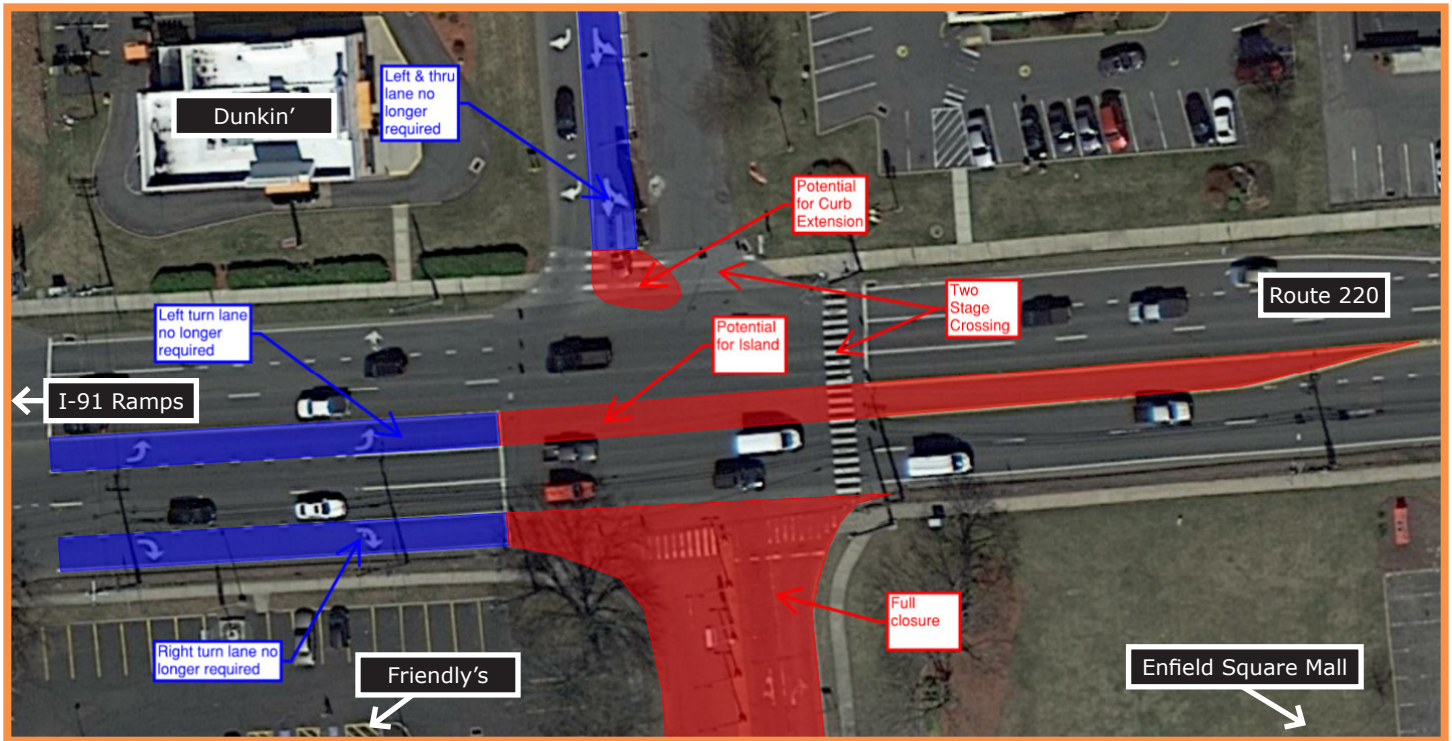
The study explored reducing Route 220 to one lane in each direction with left turn pockets at each intersection. *Traffic analysis showed that this would lead to extreme queuing and is **not recommended** for this corridor.*

Roundabouts at Intersections

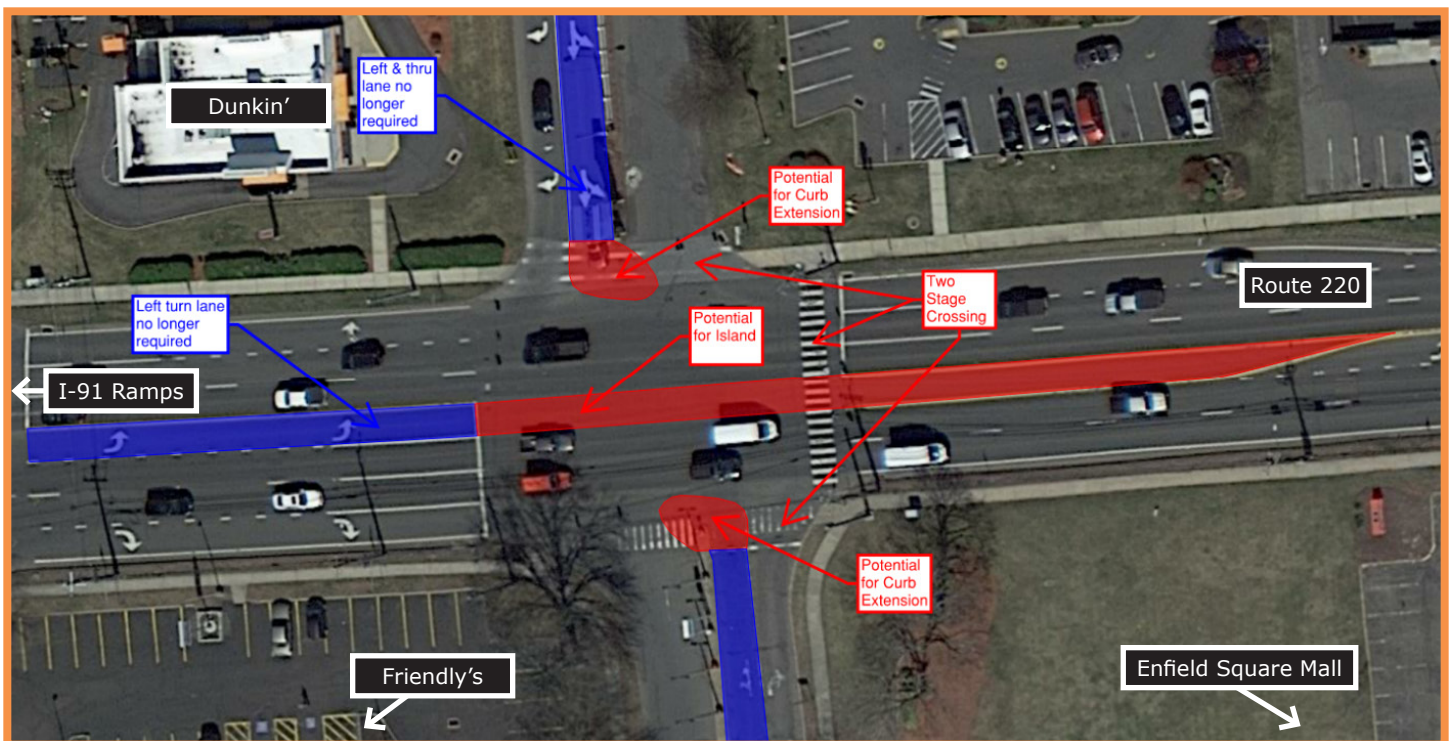
Roundabouts were investigated as an option at several intersections along Route 220. Traffic analysis showed that this would lead to extreme queuing and poor traffic flow. *Two-lane roundabouts could potentially handle the traffic volume but are **not recommended** without further investigation.*

ACCESS OPTIONS

ACCESS OPTION A - Full Closure of Western Driveway



ACCESS OPTION B - Partial Closure of Western Driveway



Figures show an aerial view of Route 220 at the western mall driveway by Friendly's before the I-91 ramps



WHAT'S NEXT

The public comment period on the *Final Enfield Traffic Impact Study* draft will remain open until October 26. Comments will then be incorporated into the final report and the study will conclude after approval from the Enfield Planning & Zoning Committee.

The recommendations from this study will be shared with the property owner of the Enfield Square Mall and will be a resource to the town for future development of the area. The Study can also guide future funding opportunities for implementation of the Study recommendations and additional planning and design efforts.