

Advisory Committee

Meeting #5

October 25, 2023

CAPITOL REGION **EAST COAST GREENWAY STUDY**

crcog.org/capitol-region-ecg-study/

Note: Meeting is recorded and will be posted online

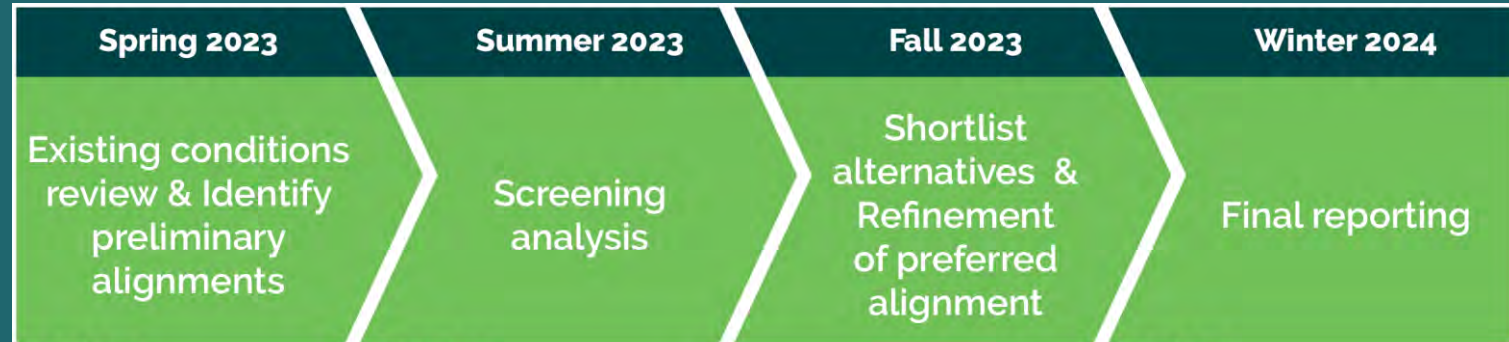


Agenda

- Project Updates
- Public Outreach Update
- Simsbury Update
- East Hartford Shortlist Updates
- Bloomfield Shortlist Updates
- Griffin Line Update
- Next Meetings and Next Steps
- Public Comment



Project Updates



TASKS	2023												2024			
	JAN	FEB	MAR	APR	MAY	JUN	JUL	AUG	SEP	OCT	NOV	DEC	JAN	FEB	MAR	APR
Advisory Committee (6)		●		●		●		●		●		●	●		○	
Website Updates (6)		●		●		●		●		●		●	●		●	
Newsletters (3)			■					■						■		
Public Municipal Meetings (6)			●●●●												●●●●	
Public Workshops (3)				●●●●										●●●●		
Public Meetings (3)														●●●●		
Survey								■								
Pop-ups (8)					●	●	●	●	●	●	●	●	●	●	●	●
Stakeholder Meetings and/or Walk-audits (6)					●●	●●	●●	●●								
Direct Municipal Meetings (6)						●●●●				●●●●						
CRCOG Committee Meetings (2)								●							●	
CTDOT Pitch Meeting													●			





Public Outreach Update



Outreach

Events Attended:

- 3/30 – Simsbury Workshop (approx. 70 attendees)
- 4/11 – East Hartford Workshop (approx. 12 attendees)
- 4/18 – Hartford Workshop (approx. 20 attendees)
- 4/26 – Bloomfield Workshop (approx. 40 attendees)
- 6/17 – East Hartford Juneteenth Pop-Up (engaged with approx. 50 attendees)
- 6/18 – Bloomfield Blue Hills Juneteenth Pop-Up (engaged with approx. 30 attendees)
- 9/17 – Bloomfield Discover CT Bike Ride Pop-Up (engaged with approximately 30 attendees)
- 9/23 – East Hartford Latino Festival Pop-Up (engaged with approx. 30 attendees)
- 9/27 – East Coast Greenway Alliance Annual Meeting (30-40 attendees)
- 10/1 – Hartford DOMINGO Parkville Pop-Up (engaged with approx. 30 attendees)

In-Person outreach with approximately 350 members of the public

Emails: About 190 unique email addresses

Comments:

- 24 logged comments (email / online form)
- Approx. 65 submissions on interactive map

Newsletter #2

E-Blast Release on October 12



CAPITOL REGION EAST COAST GREENWAY STUDY

SIMSBURY — BLOOMFIELD — HARTFORD — EAST HARTFORD

WHERE ARE WE NOW?

The study team has been hard at work in each of our communities throughout the past few months! We have met individually with many residents and stakeholders and have worked hard to incorporate what we have heard into the study.

The study team has completed the initial screening analysis for both Bloomfield and East Hartford and we invite you to read more about the results for these towns in this issue. The project team's complete work, including maps showing all alignments considered and scoring for each alignment are posted on the project website. Additional narrative on the screening process is available in the recordings of the advisory committee meetings which are also available online.

Review of alignments for the East Coast Greenway within Hartford is still underway as the study team evaluates options for the Griffin Rail Line in further detail. More information on our current status for the study within Hartford is available on Page 4.

Our team is gearing up for a shift to the next phase of this project. We are moving towards evaluating the two shortlisted alternatives selected for each area. You can expect to see additional visualizations and details of each of these shortlisted alignments in the months ahead. Please connect with the project team via our website and our e-mail mailing list to stay up to date with the most up to date information which will be shared electronically.

SCREENING METHODOLOGY

The screening process evaluated all viable routing alignments identified through public outreach, meetings with municipal staff, and input from the multi-agency advisory committee. The screening matrix weighed each of these alignments against a scoring rubric with eight criteria. The weighting of these criteria was established based on input from the public and advisory committee.

The screening analysis for the entire study area is split into three analysis areas. The North Bloomfield analysis area between Bloomfield town center and Day Hill Road, the South Bloomfield analysis area between Bloomfield town center and Downtown Hartford, and East Hartford between the CT River and the Charter Oak Greenway.



IN THIS ISSUE

SCREENING EVALUATION

①

PUBLIC INVOLVEMENT

④

DRAFT SCREENING RESULTS

②

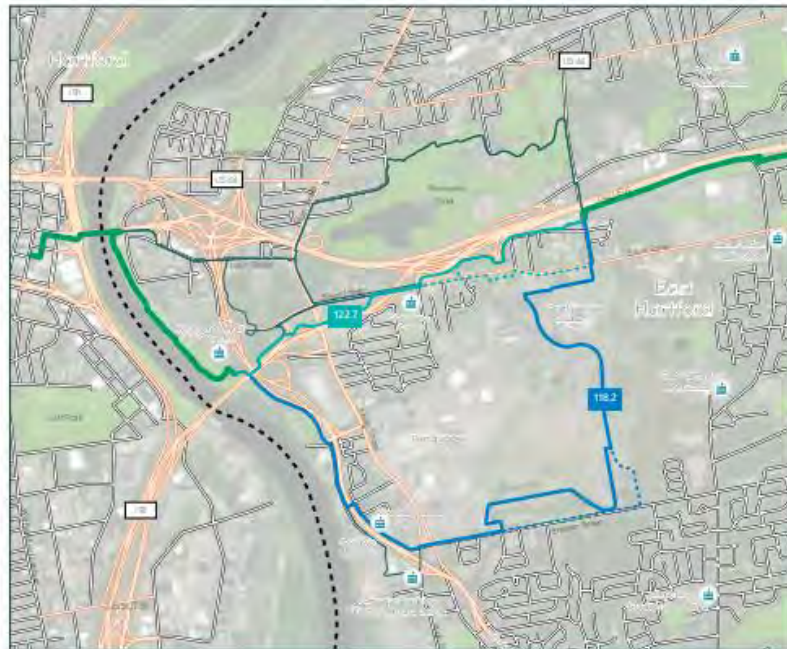
HARTFORD & SIMSBURY UPDATE

④

EAST HARTFORD DRAFT SCREENING RESULTS

This study assessed three key areas for trail routing in East Hartford. The first focused on north of I-84. This included improvements to the Hockanum River Trail, and connections to the East Coast Greenway via sidepaths on Pitkin Street, Main Street, and Hillside Street. The second explored options along the Silver Lane corridor, including sidepaths near the road, separated trails and grade-separated road crossings. The third considered routes south of Pratt & Whitney Stadium, potentially connecting through National Development property and Riverside Drive near Goodwin University.

The top ranking alignments include the Silver Lane corridor with grade-separated crossings and the Brewer Street corridor via National Development property. These shortlisted alignments will undergo more detailed examination in the study's subsequent phases.

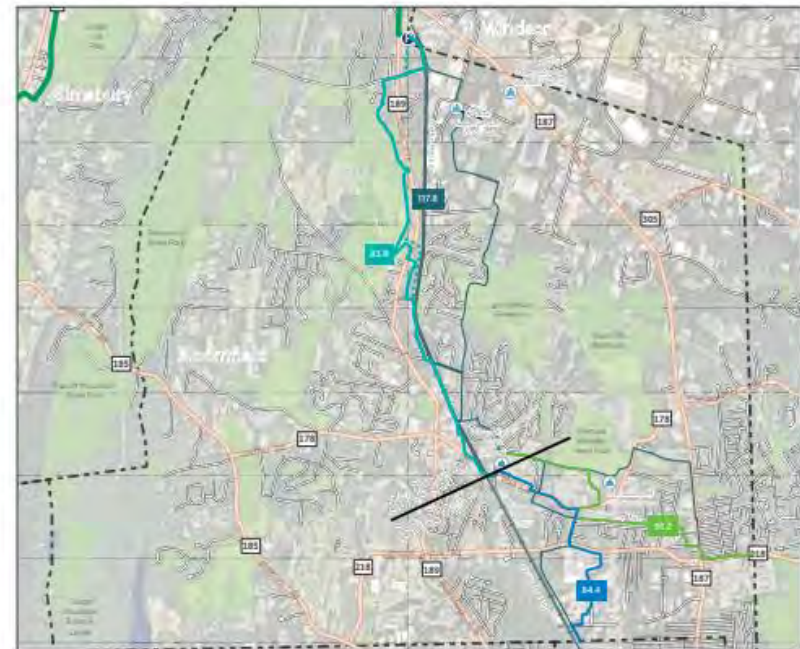
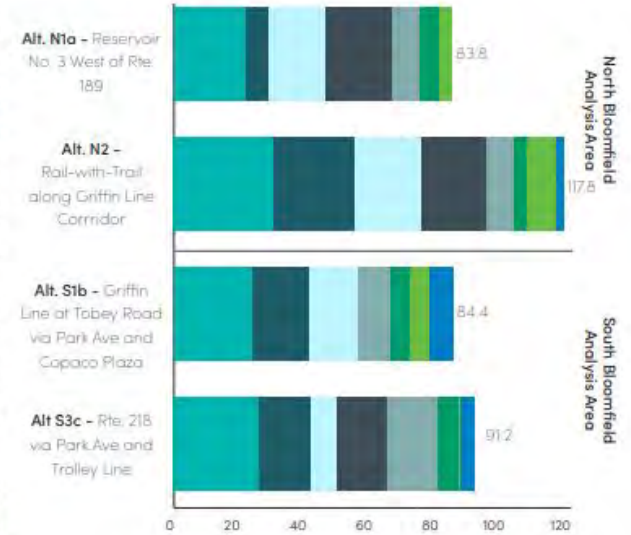


BLOOMFIELD DRAFT SCREENING RESULTS

Bloomfield's route analysis was divided into North and South areas. The North Bloomfield Analysis Area, situated between Park Avenue and the Bloomfield Greenway's southern terminus on Day Hill Road, identified four alignment options. Among these, two were shortlisted for further study: Alternative N1a, which combines Reservoir No. 3 and rail-with-trail configuration in selected areas south of Dorothy Drive, and Alternative N2, which follows the Griffin Rail Line as rail-with-trail the entire length.

In the South Bloomfield Analysis Area, six alignment options were considered. Three of these connected to Hartford near Tobey Road, while the others linked to Windsor at Route 218. The area of connection will depend on trail routing through Hartford which is currently in review.

The next steps in this study involve a more in-depth examination of these selected routes, with the goal of making a final decision on which alignments to pursue.



Note - Alt. S2 includes routing on the Griffin Rail Line corridor. This section is currently in additional feasibility review.





HARTFORD UPDATE

Screening analysis for Hartford is still underway and will be presented at a later date. To fully evaluate the feasibility of all alternatives, the project team is conducting additional analysis of the viability of a rail-with-trail configuration along all or parts of the Griffin Rail Line between Edwards Street in Hartford and Park Avenue in Bloomfield. The Griffin Rail Line is an active freight line connecting to the main line in Hartford and heads in a northwesterly direction from Downtown to its terminus at Day Hill Road in Bloomfield.

This work is being conducted in conjunction with the Connecticut Department of Transportation, the City of Hartford, the Town of Bloomfield, and iQuilt among other partners. It is expected the preferred alignment of the Griffin Line corridor will be shortlisted for further consideration as part of the East Coast Greenway route.



SIMSBURY UPDATE

A total of nine alignments were identified to connect the existing Farmington Canal Heritage Trail to the Tariffville Connector Trail currently in construction along Route 189. Identified routes included areas east and west of Route 315 as well as an alternative north of Tariffville via Floydville Road. These routing options were evaluated against a total of six screening criteria. The screening analysis identified the highest scoring route alternative as a new shared use path alignment along the east side of the Farmington River, a new bridge over the river, and repurposing an abandoned rail line as a shared use path. Please visit the project website for the most up-to-date information as the project team works to select a preferred alignment in the coming weeks.

STAY INVOLVED

① Visit the project website and view the full screening results:

crcog.org/capitol-region-ecg-study



② Send us a comment via the website

③ Explore the proposed greenway alignments in more detail on the website's interactive mapping tool:



fhstudio-apps.com/ecg-map



Future Engagement

Winter 2023-2024

- Community Pop-up Events (3 more)
- **1-on-1 Stakeholder Meetings**
- Email and Newsletters (1 more newsletter min.)
- Final Public Meetings
- Town Council Meetings / Approval

What?

- Visualizations and additional detail of Shortlisted Alignments
- In-person site visits with stakeholders on Shortlisted Alignments
- Review of project process
- Summary of report recommendations



Simsbury Update

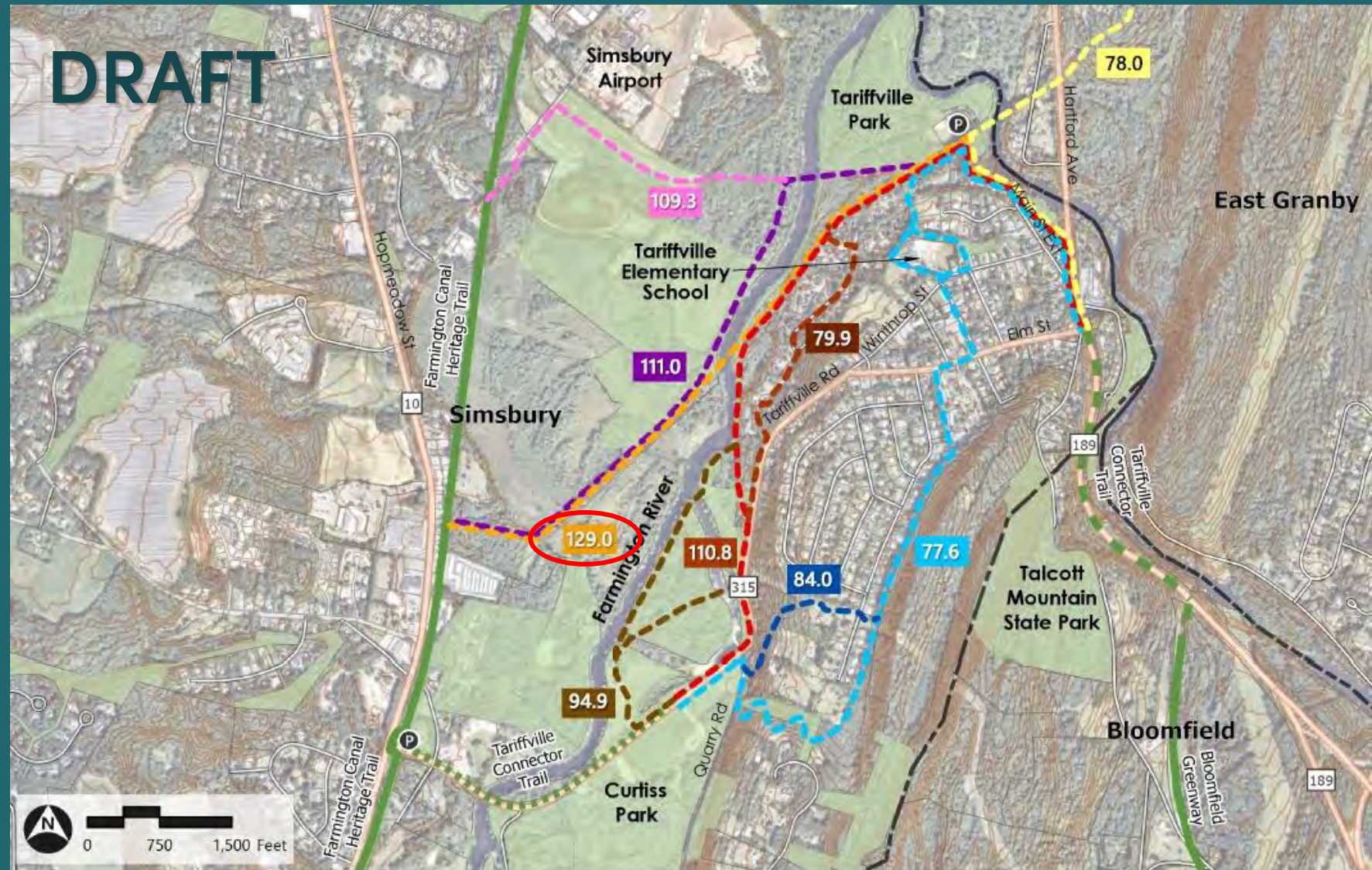
Simsbury Update

Selectboard Meeting on
September 27, 2023



Tariffville Alignment Scoring Summary

DRAFT



Legend

Multi-Use Trails	<ul style="list-style-type: none"> In Design Existing In Construction 	<ul style="list-style-type: none"> Major Roads Public Open Space Existing Trail Parking 	Simsbury Trail Alignments Studied <ul style="list-style-type: none"> Alternative 1 A Alternative 1 B Alternative 2 	<ul style="list-style-type: none"> Alternative 3 A Alternative 3 B Alternative 3 C Alternative 4 A Alternative 4 B Alternative 5 ## Evaluation Score
------------------	--	--	--	---



Selectboard Presentation

Full Presentation:

[9-27-23.pdf \(simsbury-ct.gov\)](https://www.simsbury-ct.gov/9-27-23.pdf)

Highest Scoring Alternative: Pinch Point at 6 White Water Turn

Elevated boardwalk option closer
to the Farmington River

Pros:

- Maintains ~70' min. from homes
- Closer to the river / views

Cons:

- Property impacts
- potential impact to floodplain



Trail option at the top
of the slope

Pros:

- Away from floodplain
- Along former RR path

Cons:

- Property impacts
- Proximity to residences

Results



Town of Simsbury

833 HOPMEADOW STREET SIMSBURY, CONNECTICUT 06070



Resolution

"Endorsement of Preferred Alignment for the Tariffville Connection Trail"

WHEREAS, The Capitol Region Council of Governments (CRCOG), in cooperation with the Town of Simsbury, and Connecticut Department of Transportation (CTDOT) completed the Capitol Region East Coast Greenway Study (the "Study") that identified preferred routes for the East Coast Greenway also known as the "Tariffville Connection Trail"; and

WHEREAS, The Study included a public and stakeholder outreach component in conformance with state and federal planning process best practices; and

WHEREAS, The Town of Simsbury and the public will be afforded additional opportunities to review and comment during the design phase of the trail;

NOW, THEREFORE, BE IT RESOLVED that the Board of Selectmen of the Town of Simsbury supports the design of a multi-use trail along the Alternative Two alignment as identified in the Study with the condition that the trail be minimally invasive with respect to any habited home; and

BE IT FURTHER RESOLVED that the Town of Simsbury acknowledges the need for a maintenance agreement between the Town and the State to be developed prior to construction which will establish agreed upon maintenance responsibilities that will be assigned to each of the parties.

I hereby certify the foregoing to be a true and correct copy of a Resolution adopted by Board of Selectmen of the Town of Simsbury in meeting duly assembled on September 27, 2023, which Resolution has not been rescinded, amended, or modified in any way whatsoever.

Dated at Simsbury, Connecticut this 28th day of September 2023.

Trish Munroe

Trish Munroe
Simsbury Town Clerk





Remaining Tasks

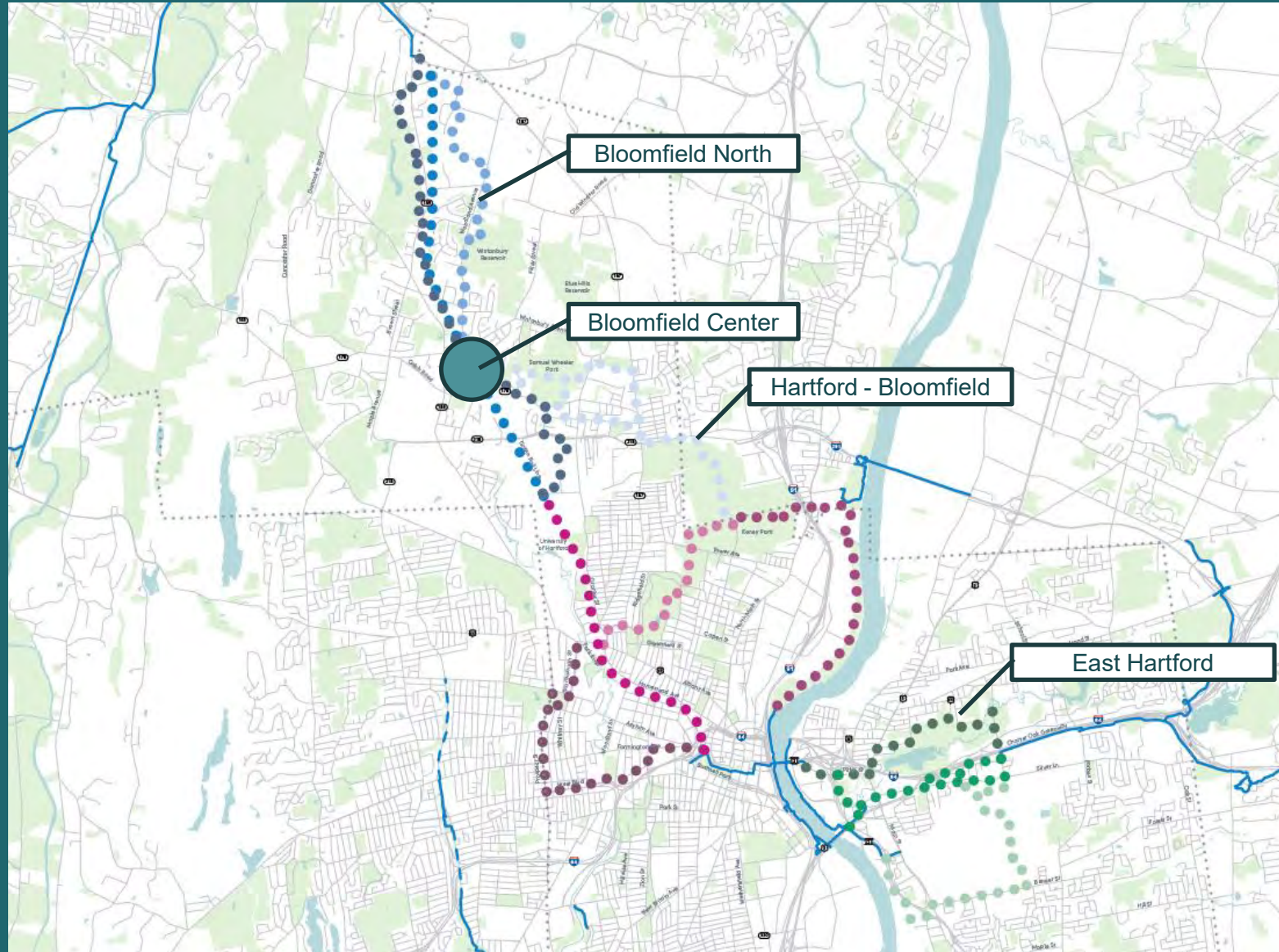
- Refine Preliminary Preferred Alignment
 - Concept plans at 1:40 scale
 - Trail rendering (Farmington River Bridge)
- Draft and final report





Shortlist Update

Analysis Areas

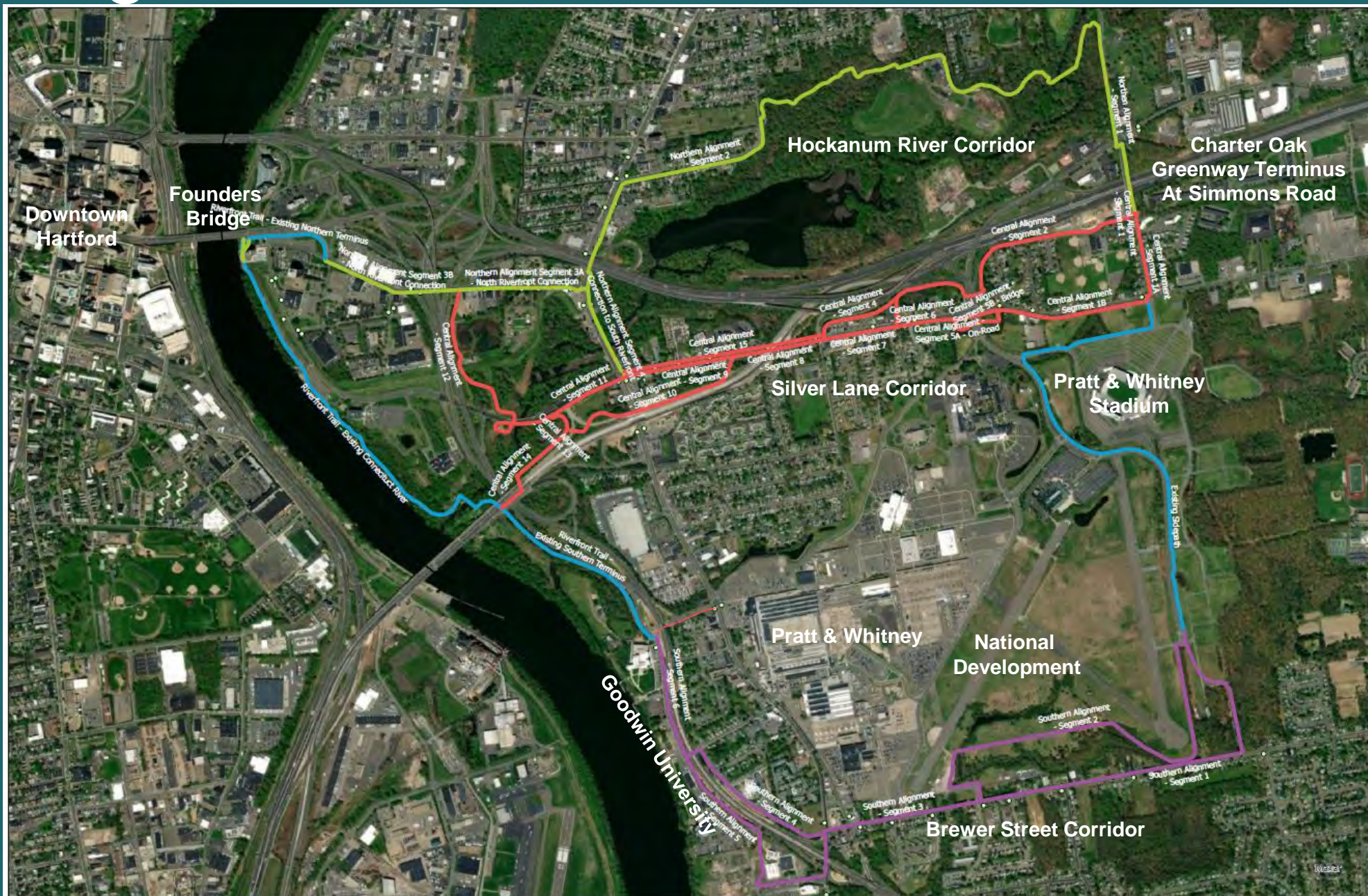




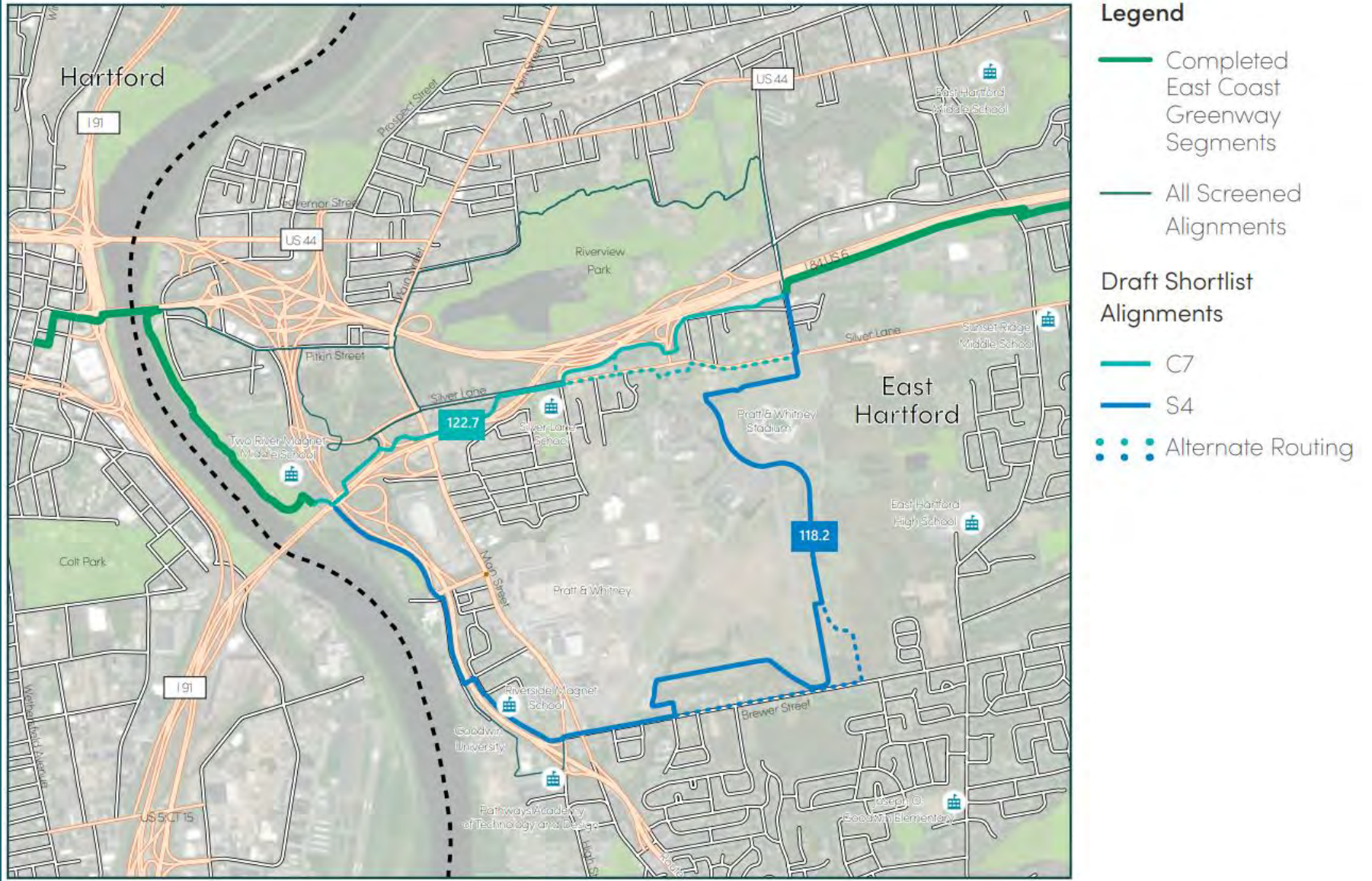
East Hartford

Shortlist Updates

All Alignments Evaluated



Shortlisted Alignments





East Hartford Updates

Meetings with Town Leadership –
September 14, October 13

Site Walk – October 5

- FHI Studio

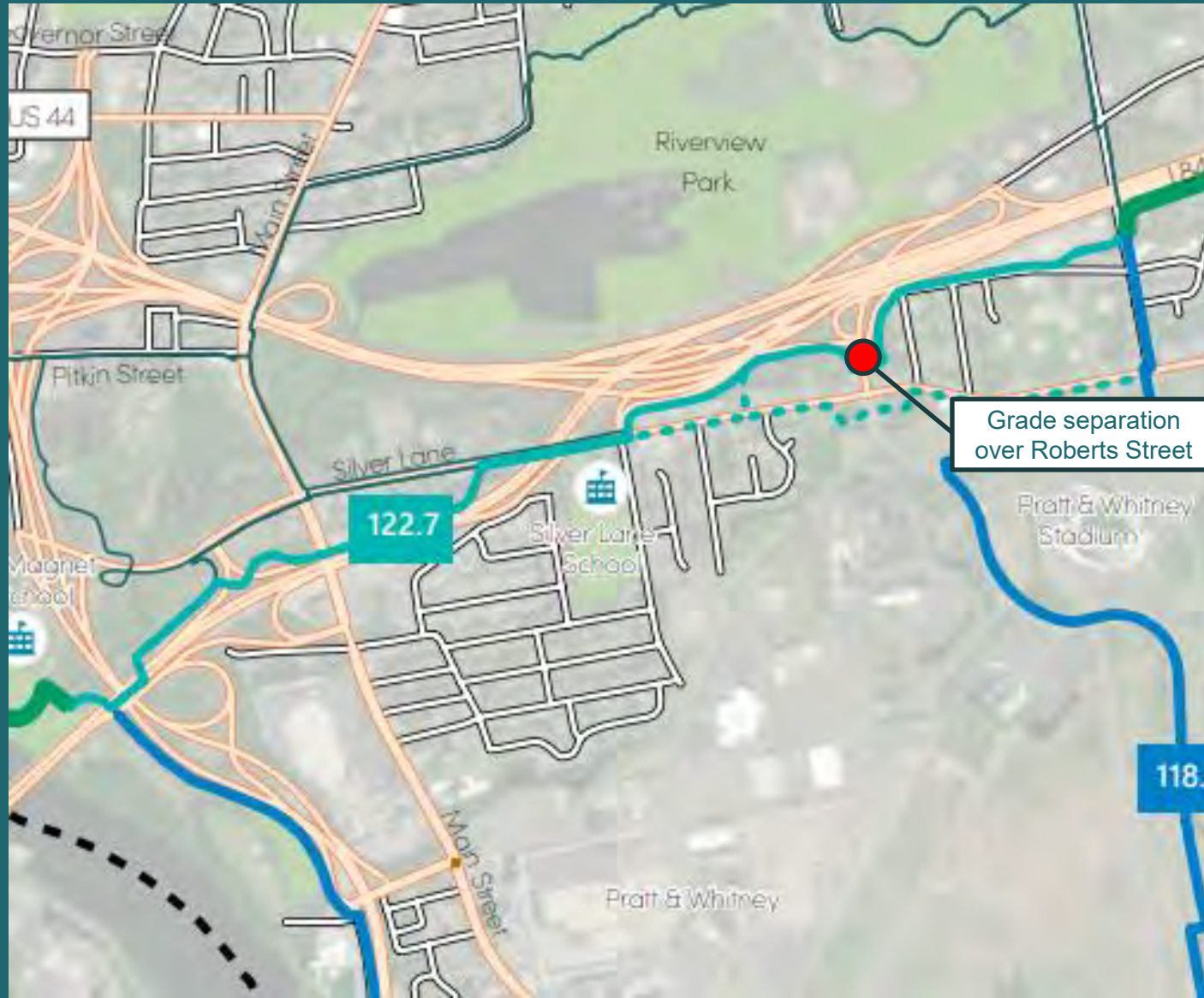
Site Walk – October 19

- Town of East Hartford
- CRCOG
- FHI Studio



Site Visit October 19th, Looking southwest towards the intersection of Silver Lane and Roberts Street

Alt C7 - Silver Lane - Potential Elements

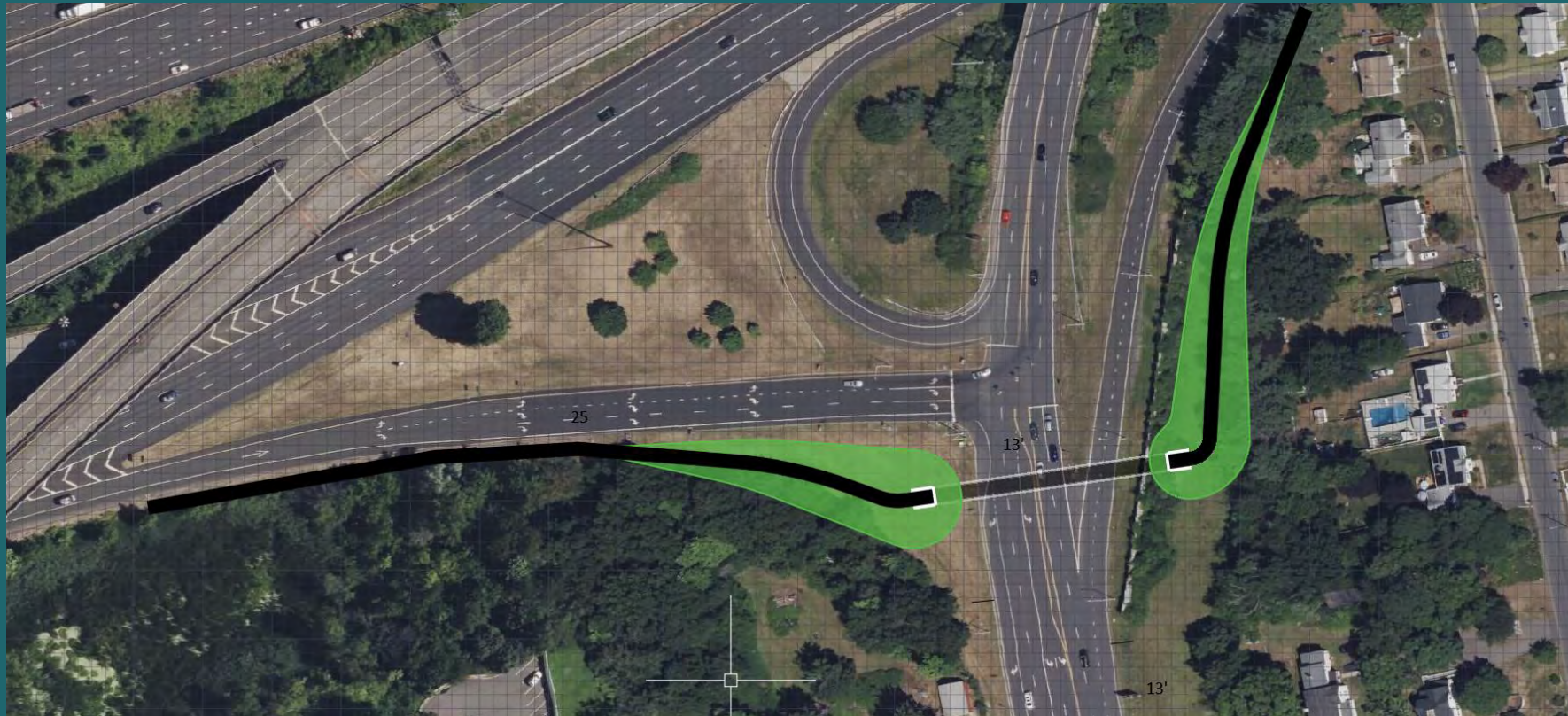




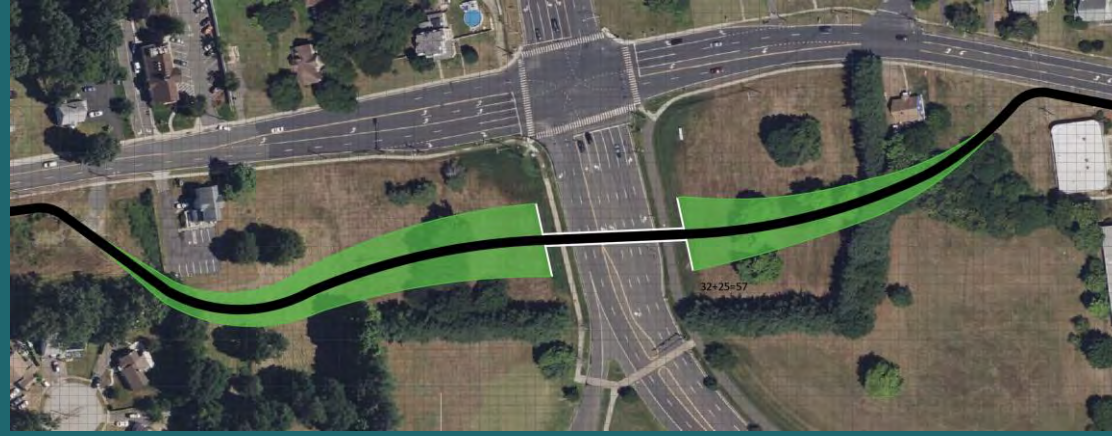
Roberts Street

Potential ideas to show potential alignment and grade change

Idea 1 – Culvert under Roberts Street. Requires less elevation separation and works well with topography. Note potential flooding and drainage considerations.



Potential *ideas* to show potential alignment and grade change



Ideas 2-4 are bridges over this area. Requires additional elevation separation to meet clearance of roadways. For ADA requirements – approach would be 300-400 feet. Note – clear bridge spans of ~280 feet diagonally or ~200 ft across East Hartford Boulevard. Likely significant expense for these concepts.



Roberts Street

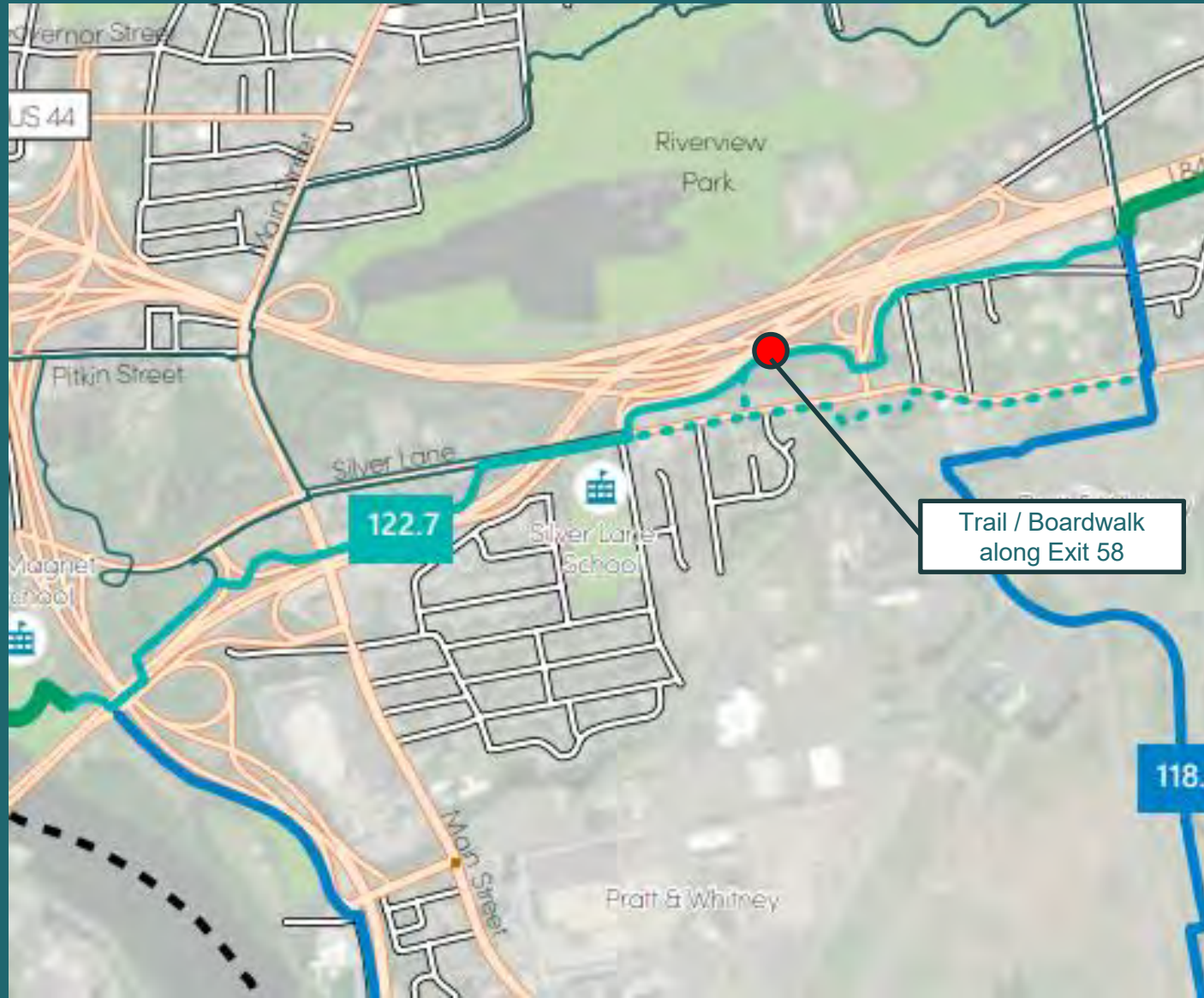


Looking east towards Roberts Street. Note grading in this area.



Looking southwest towards the intersection of Silver Lane and Roberts Street

Alt C7 - Silver Lane - Potential Elements



West of Roberts Street

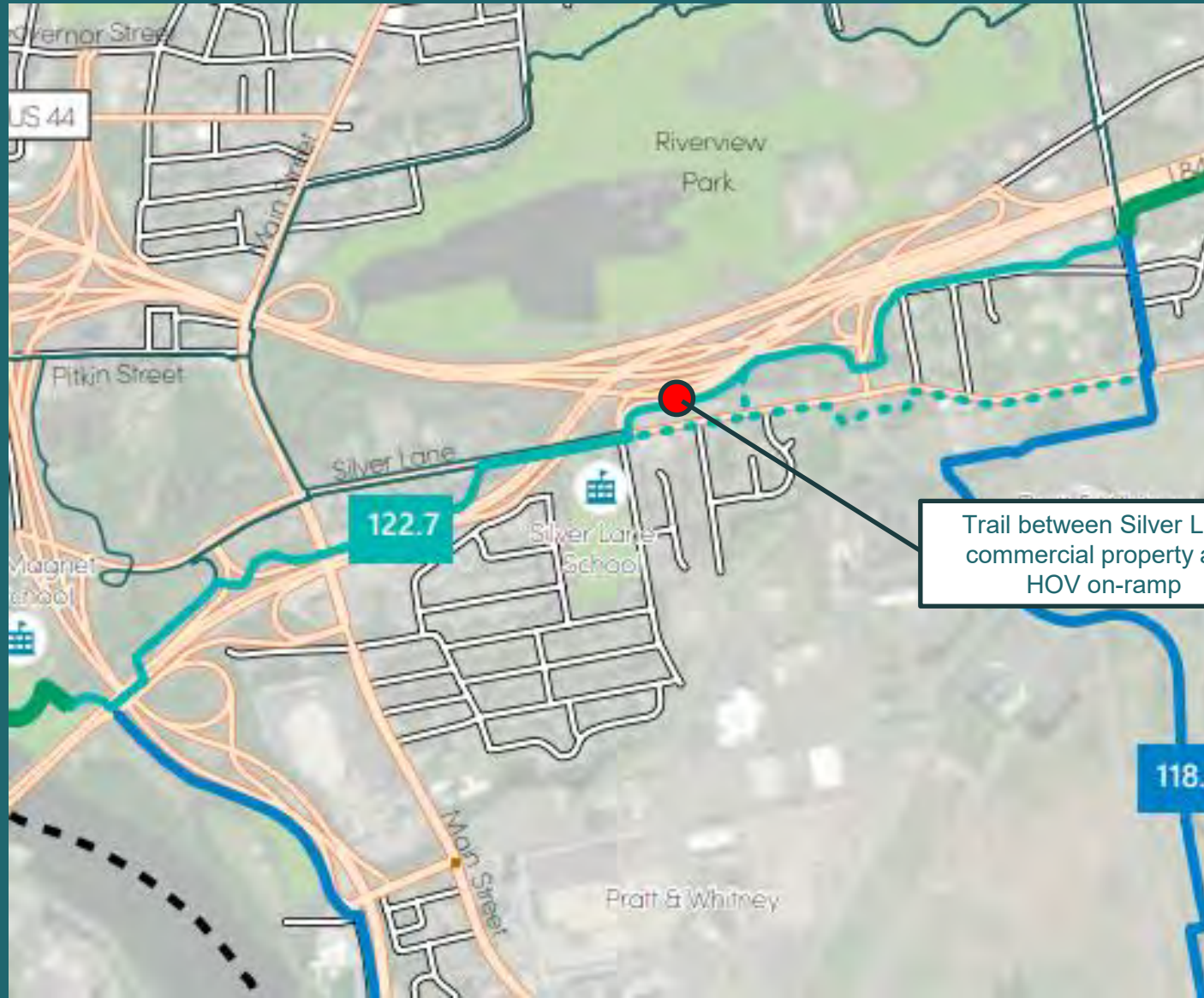


Looking east along Exit 58.



Looking east near the HOV Eastbound bridge pier. Note distance to wetlands down hill on right.

Alt C7 - Silver Lane - Potential Elements



Trail between Silver Lane commercial property and HOV on-ramp

Near HOV Ramp



Looking east near 260 Silver Lane east of Taco Bell.



Looking east near Taco Bell.

Alt C7 - Silver Lane - Potential Elements





Near Rte 15 Exit 91 WB On-Ramp

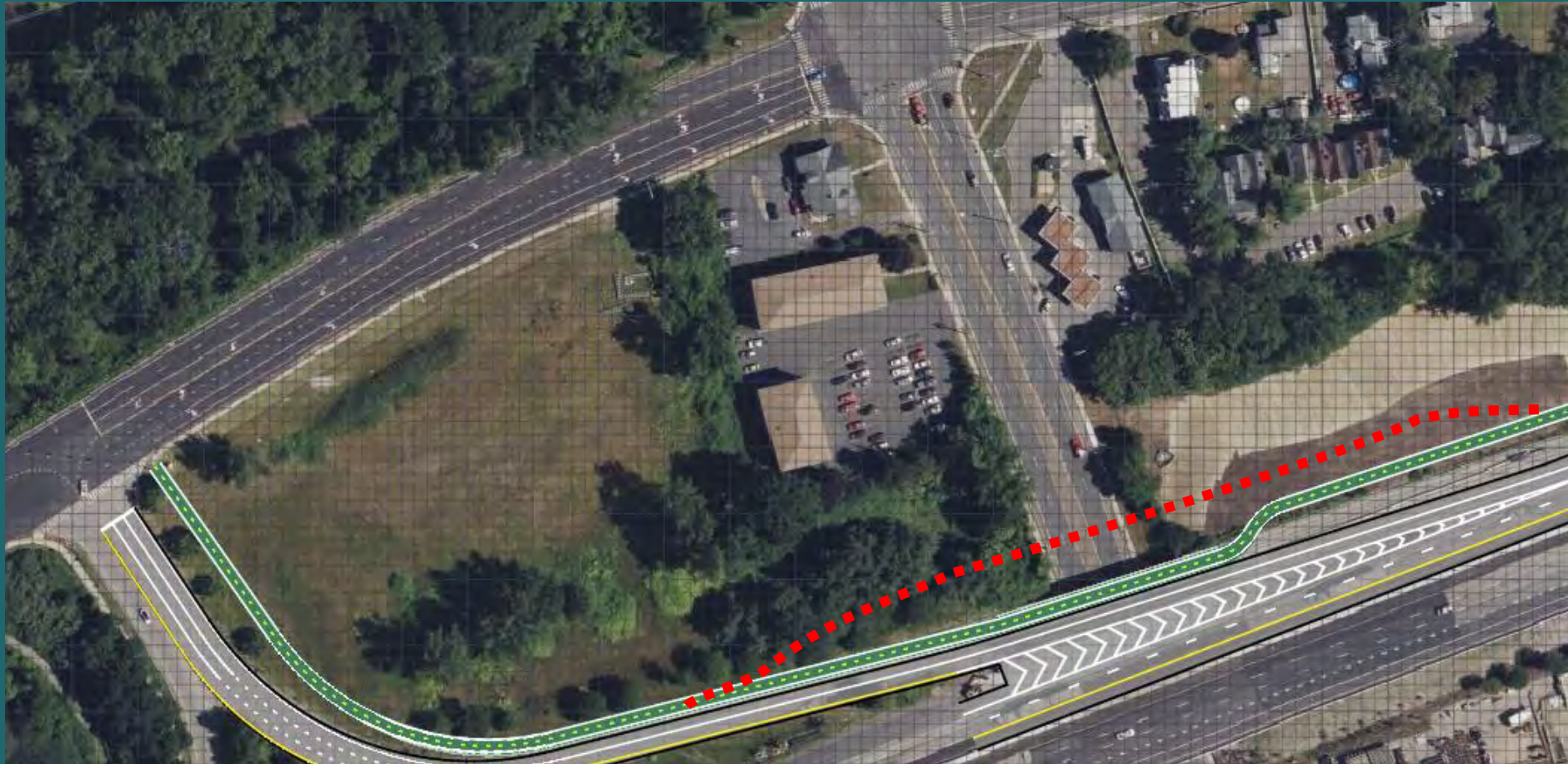


Trail could connect to Rte 15 ROW via reconfigured or eliminated Exit 91 on-ramp. Reconfiguration is a recommendation of the Silver Lane Corridor Study.

Alt C7 - Silver Lane - Potential Elements

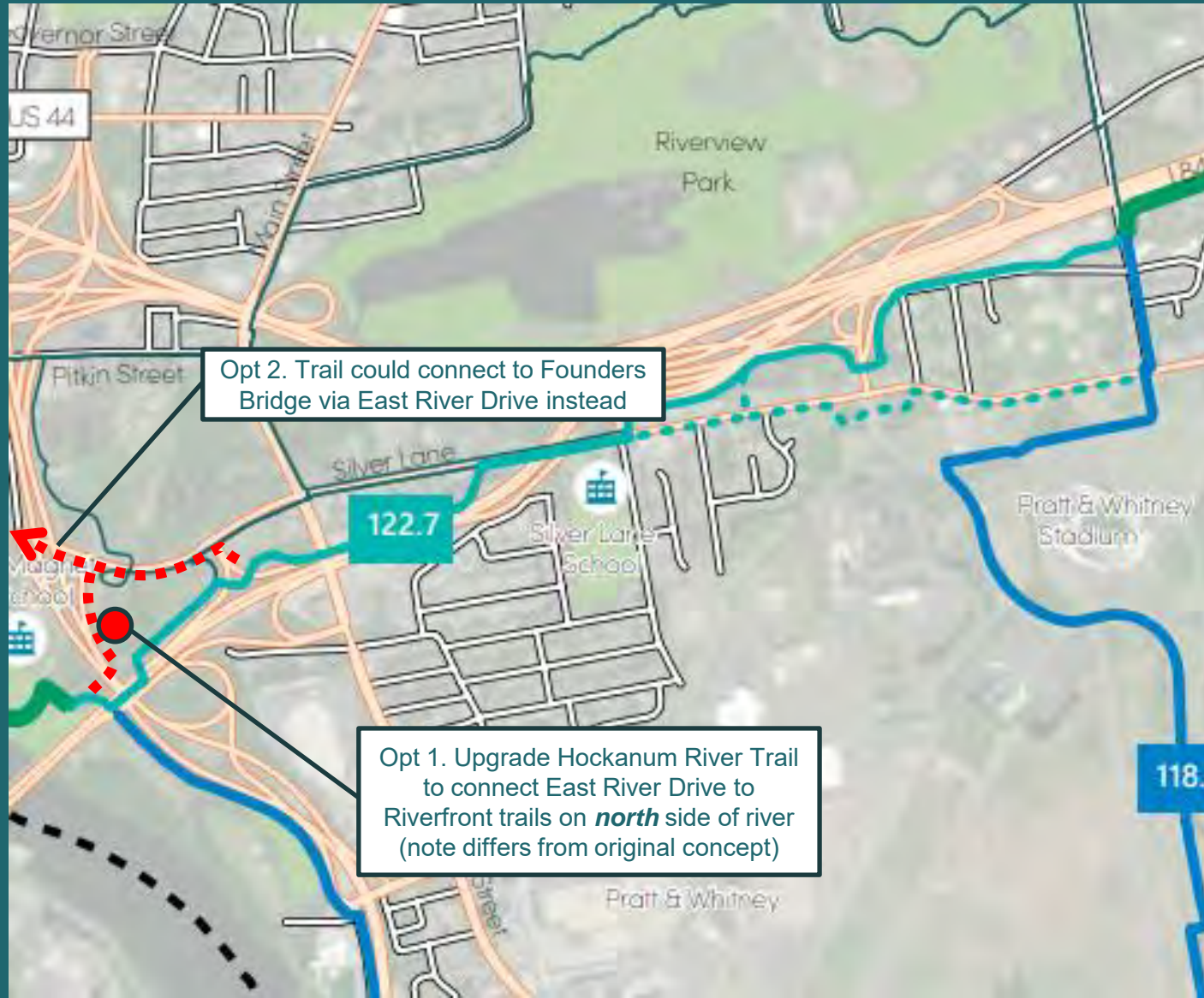


Main Street Bridge



Trail could span over Main Street via a realignment of the Rte 15 Exit 90 WB off-ramp and reconfiguration of the bridge deck. A separate trail bridge to the north could also be constructed within available CTDOT right-of-way.

Alt C7 - Silver Lane - Potential Elements



Opt 2. Trail could connect to Founders Bridge via East River Drive instead

Opt 1. Upgrade Hockanum River Trail to connect East River Drive to Riverfront trails on **north** side of river (note differs from original concept)

Hockanum River Trail

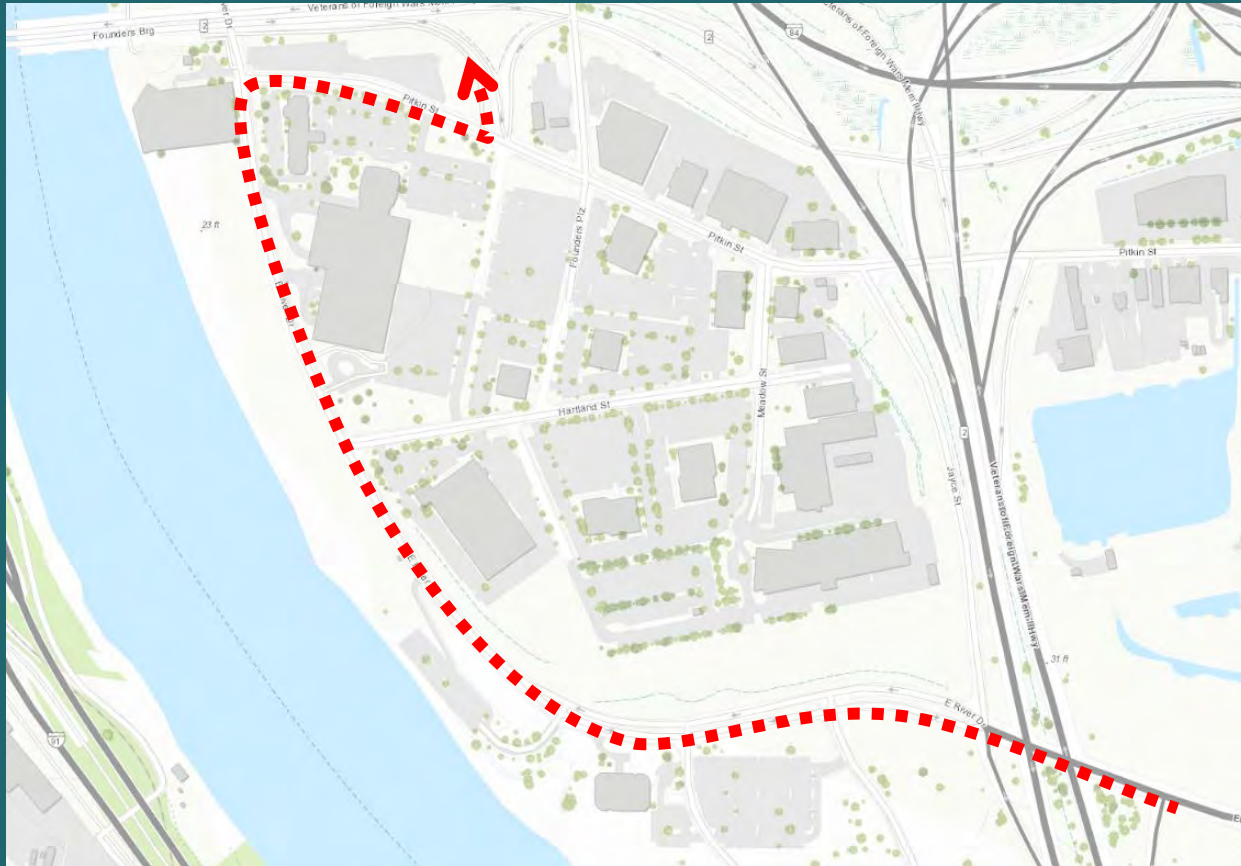


Hockanum River Trail under Rte 2 overpass. View looking east.

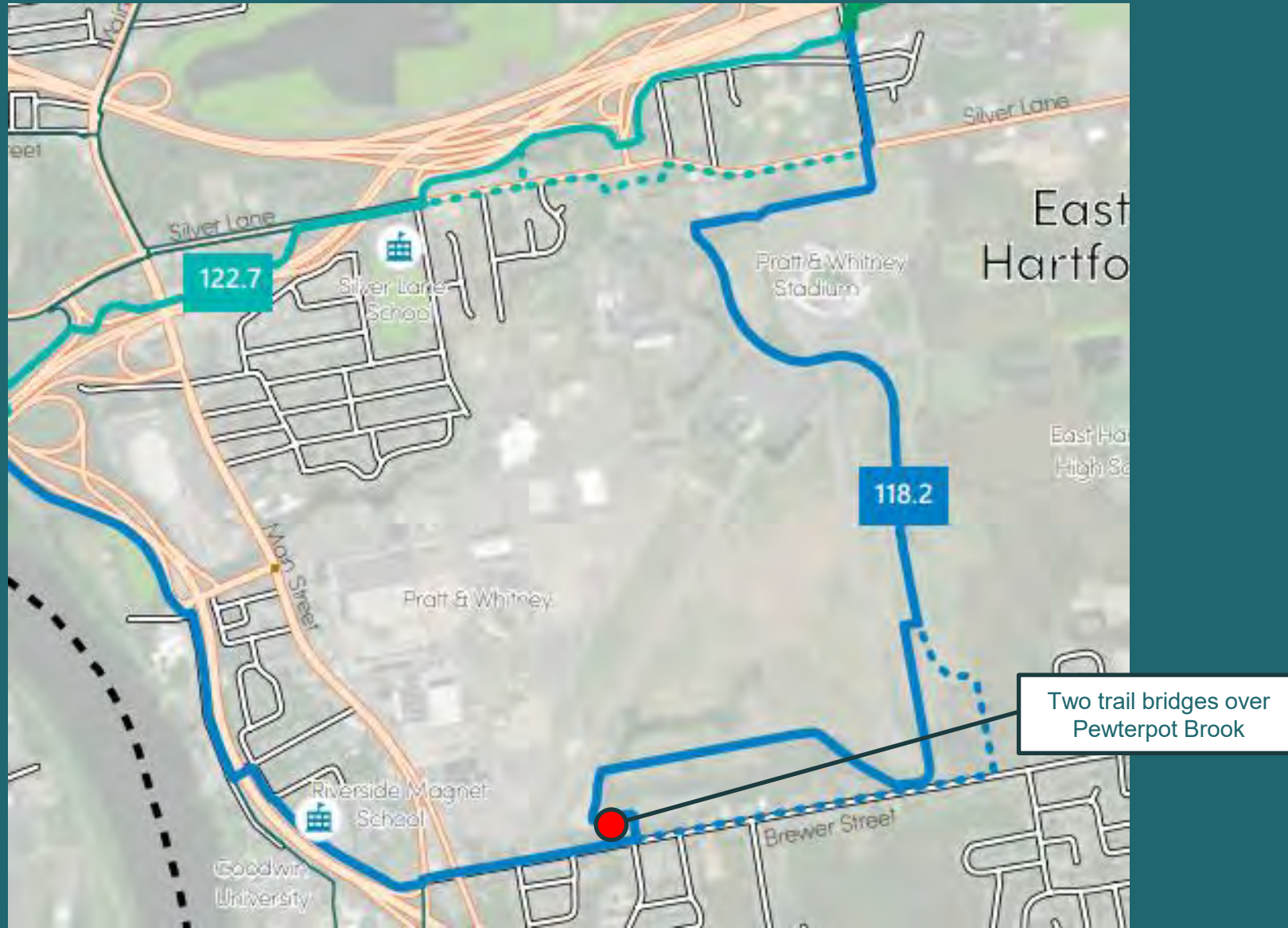


Hockanum River Trail just to the east of Rte 2 Exit 4 NB off-ramp to East River Drive. View looking north.

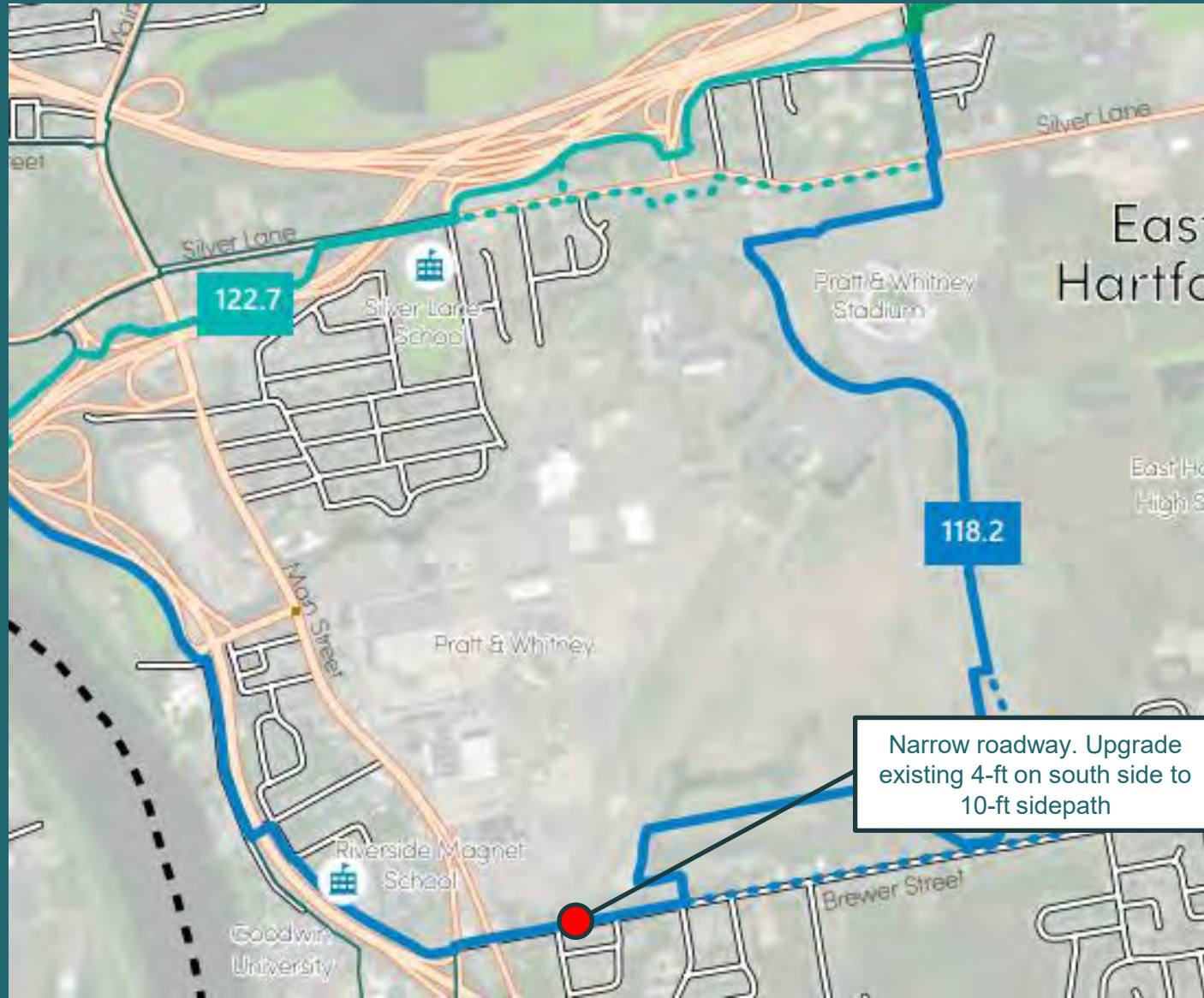
East River Drive



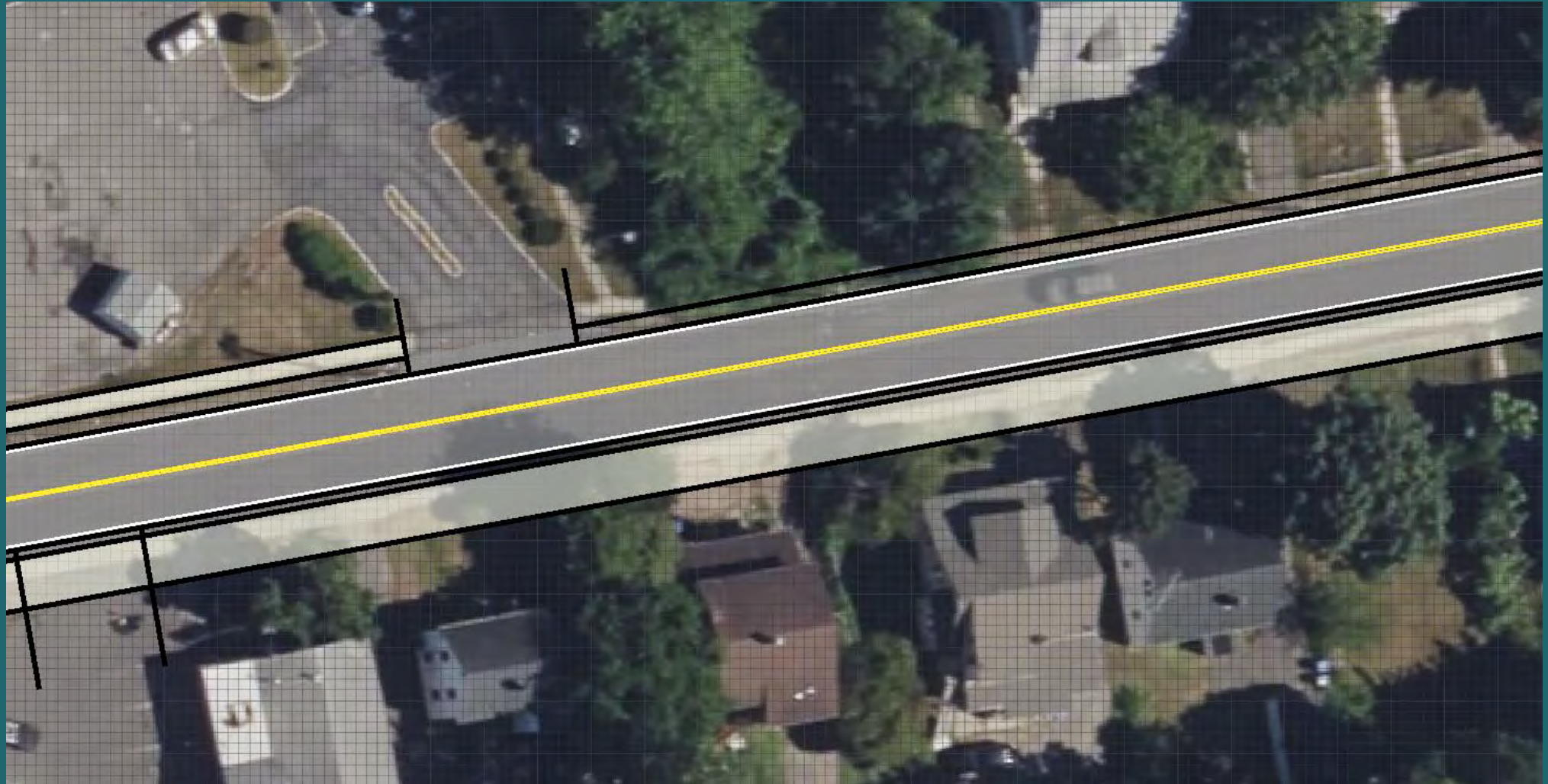
Alt S4 – Brewer Street – Potential Elements



Alt S4 – Brewer Street – Potential Elements



Alt S4 – Brewer Street – Potential Elements



Trail could be aligned as a sidepath on the south side of Brewer Street. Note proximity to residences.

Alt S4 – Brewer Street – Potential Elements



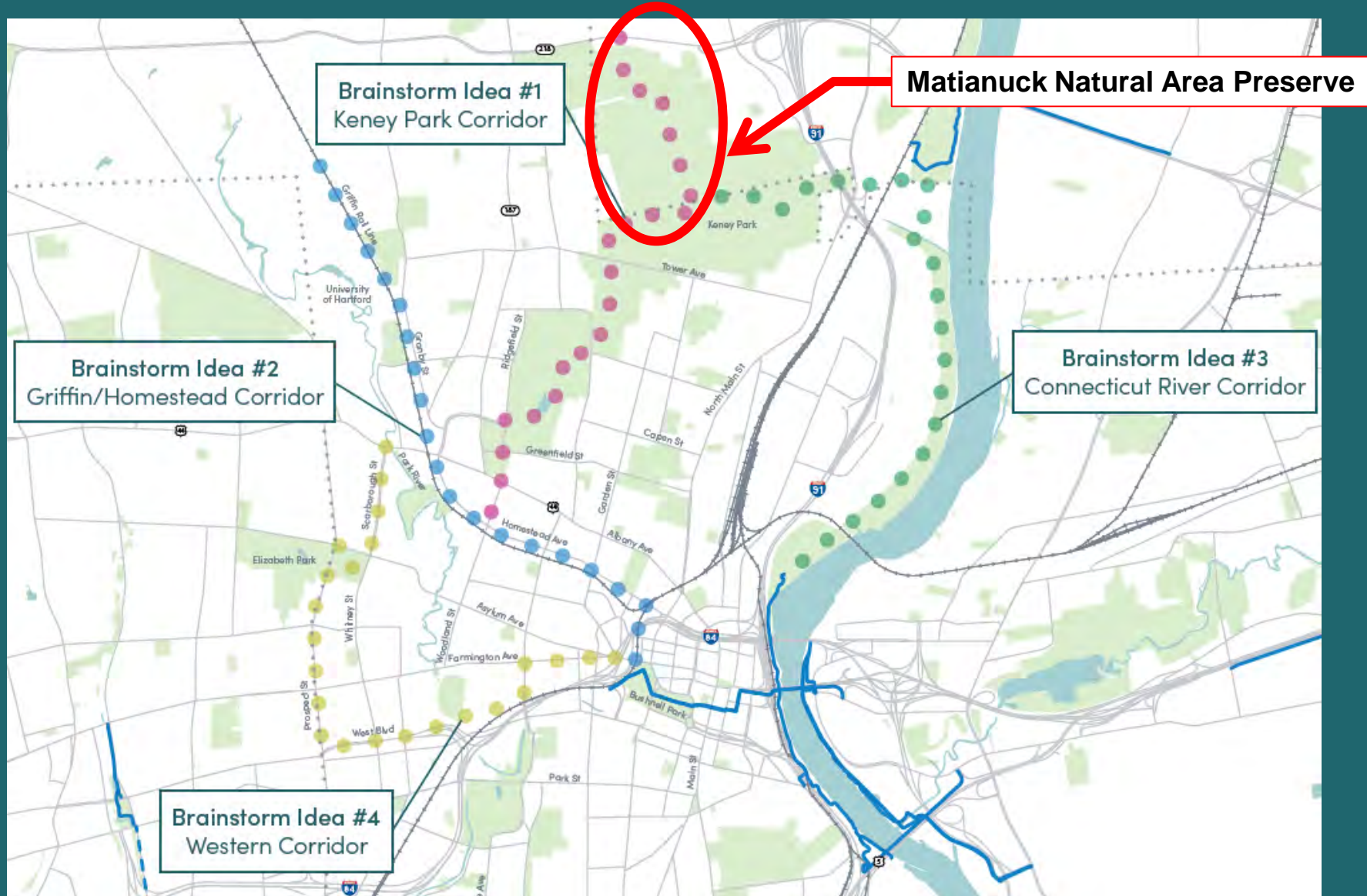


Bloomfield

Shortlist Updates



Matianuck Natural Area Preserve





Matianuck Natural Area Preserve

Meetings with CTDEEP

- July 20
- August 24
- September 12



CTDEEP Determination Letter

“Based on the foregoing, and given that this is a relatively small Natural Area Preserve located within a region having little protected open space, the Wildlife Division and this office do not support routing a new section of the East Coast Greenway multiple-purpose recreational trail through or at the perimeter of the Preserve. Unfortunately, it appears that any multiple-purpose recreational trail alignment will have detrimental impacts to the Preserve’s habitats and natural communities which the property was designated to protect. As such, we are asking that you remove from your study any and all proposed alignment routes at the Matianuck Natural Area Preserve.”



Connecticut
Department of Energy &
Environmental Protection

OFFICE OF THE COMMISSIONER
LAND ACQUISITION & MANAGEMENT UNIT

SENT VIA EMAIL

Date: October 16, 2023

To: Parker Sorenson, PE
Senior Engineer
Fitzgerald & Halliday, Inc. dba FHI Studio
416 Asylum Street
Hartford, CT 06103
psorenson@fhistudio.com

Subject: Capitol Region East Coast Greenway Study
State of Connecticut’s Matianuck Natural Area Preserve, Windsor CT
DEEP File #A-2023-102

Dear Mr. Sorenson,

Thank you for presenting proposed alignment routes for a new section of the East Coast Greenway multiple-purpose recreational trail through the Matianuck Natural Area Preserve (“Preserve”). Both the meeting on July 20, 2023 with the Land Acquisition and Management Office at the Connecticut Department of Energy and Environmental Protection (“DEEP” or “Department”) and a follow-up meeting on September 13th including staff of DEEP’s Wildlife Division were valuable for understanding and evaluating the proposal. We appreciate being included by the study consulting team and study managing agency during the early planning phase.

As background, DEEP acquired the Preserve primarily to protect significantly unique inland sand dunes and pitch pine communities found existing at the site. Portions of the Preserve are subject to a conservation easement held jointly by the Towns of Windsor and Bloomfield. Recognizing its high value for natural resources heritage, the Natural Area Preserve was formally designated in year 2000 by Governor John Roland, and it is stewarded by DEEP’s Wildlife Division under an approved Management Plan, pursuant to Connecticut general statute and Regulations of Connecticut State Agencies.

During the September 13th meeting, staff at the Wildlife Division explained that the Preserve hosts critical and unique natural inland sandbarren, pitch pine, inland wetland and vernal pool habitats capable of supporting a myriad of invertebrate, floral and faunal species, all while being surrounded by urban high density commercial and residential development. The Wildlife Division recently performed pitch pine and sandbarren habitat restoration and enhancement work at the Preserve and has intentions to continue the same in the future.

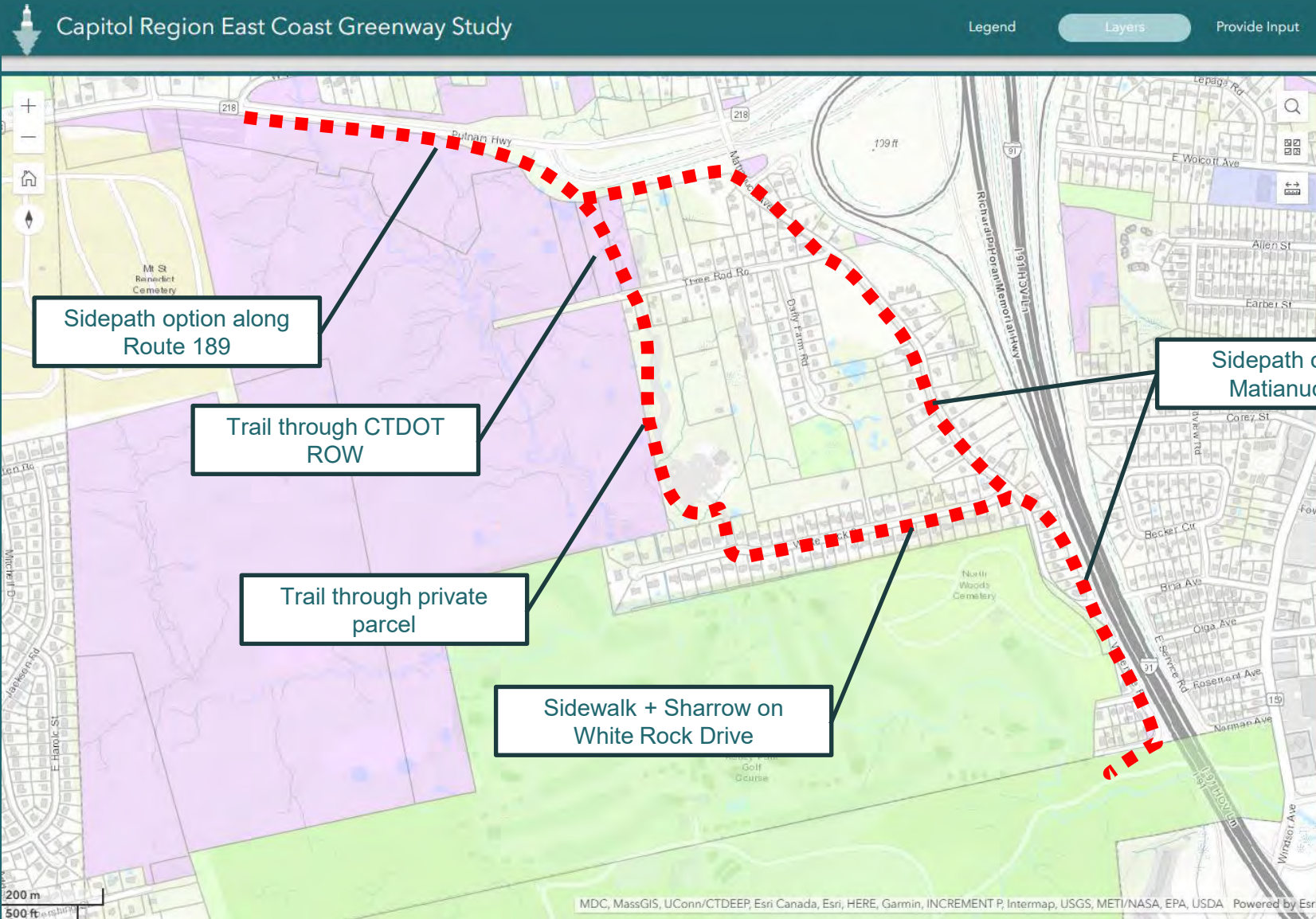
The Matianuck Natural Area Preserve Management Plan allows for Wildlife Division review and approval of passive recreational trails at the site. The Wildlife Division believes the space dimensions required and civil improvements necessary for the typical trail examples consistent with other sections of the East Coast Greenway constitute intensive development. Construction of a new, multiple-purpose recreational trail at the Preserve poses a high risk of habitat degradation and fragmentation. Previously established

79 Elm Street, 6th Floor
Hartford, CT 06106-5127
portal.ct.gov/DEEP

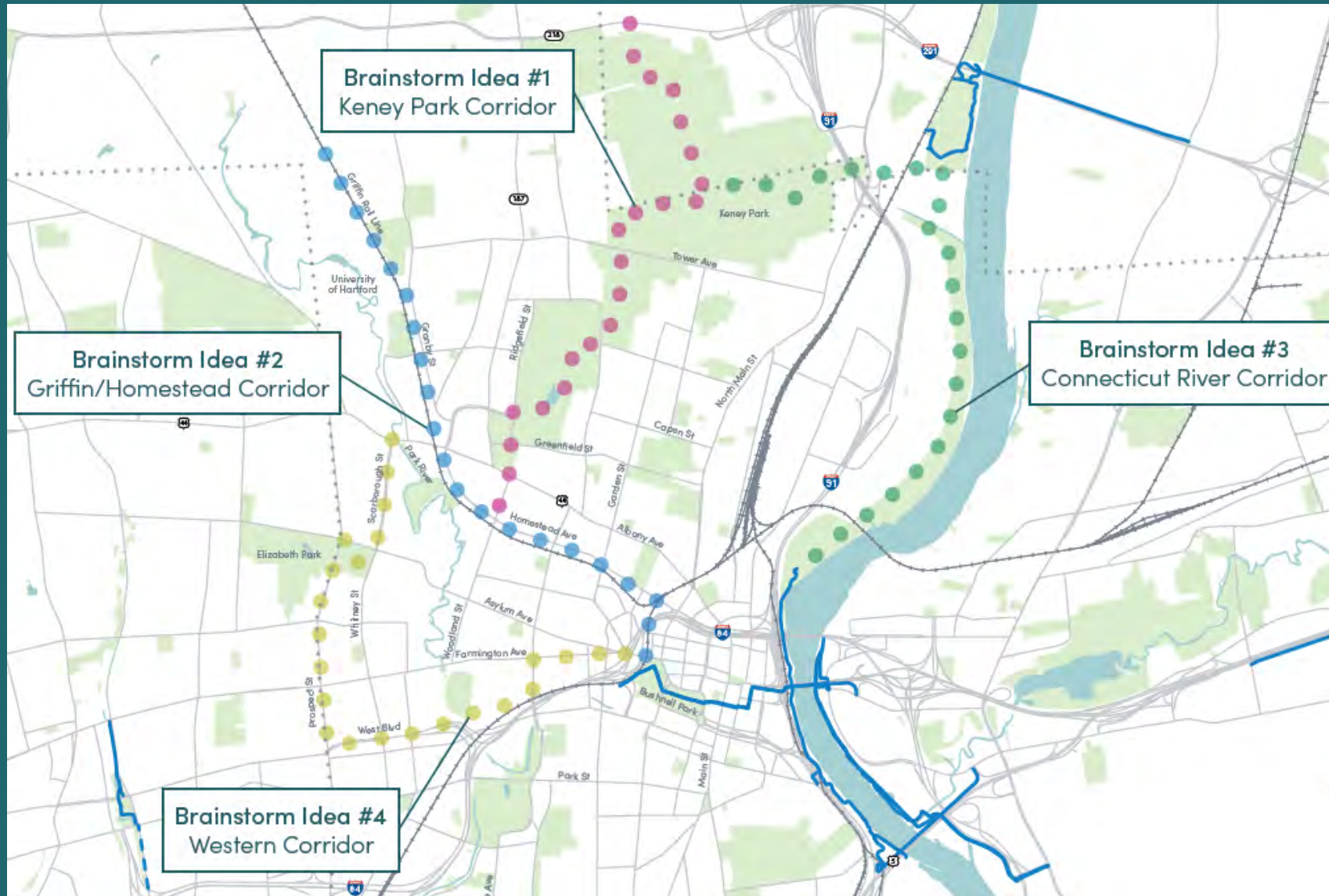
An Affirmative Action/Equal Opportunity Employer



Alternative Alignments



Matianuck Natural Area Preserve





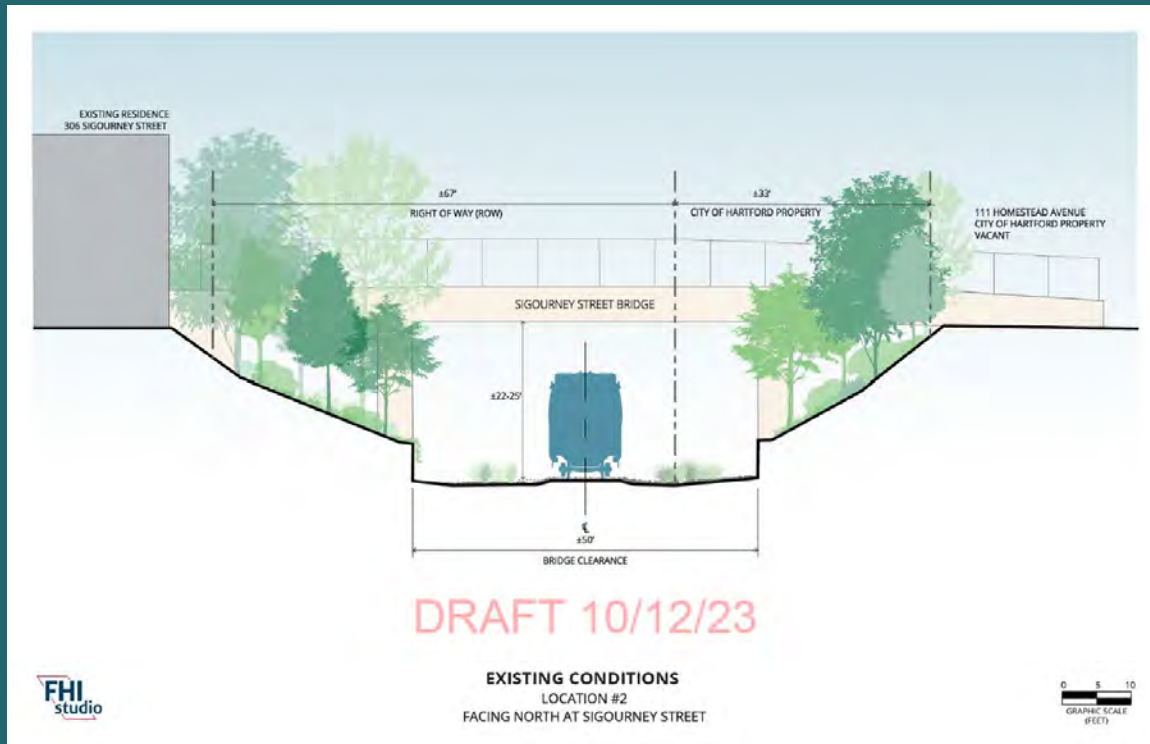
Griffin Line Update



Griffin Line On-Going Activities

- Ongoing coordination with City of Hartford, Town of Bloomfield, CTDOT (Office of Rail) & iQuilt
- Site Visit – November 21
- Existing Conditions Review

Existing Conditions Review





Griffin Line

For the Hartford – Bloomfield Gap, we will continue to score the other alignments, and we expect our shortlist will include:

- 1) Best Griffin Line option
- 2) Next best alternative





Next Meetings and Next Steps

- Wednesday, December 13th, 2023 – 11:00 – 12:30
- Wednesday, January 31st, 2023 – 11:00 – 12:30
- March 2024 – TBD



Public Comment

Thank You!

Thank You!



Parker Sorenson, PE
psorenson@fhstudio.com
860-256-4905

Caitlin Palmer
cpalmer@crcog.org
860-724-4435