

Advisory Committee

Meeting #6

December 13, 2023

CAPITOL REGION **EAST COAST GREENWAY STUDY**

crcog.org/capitol-region-ecg-study/

Note: Meeting is recorded and will be posted online

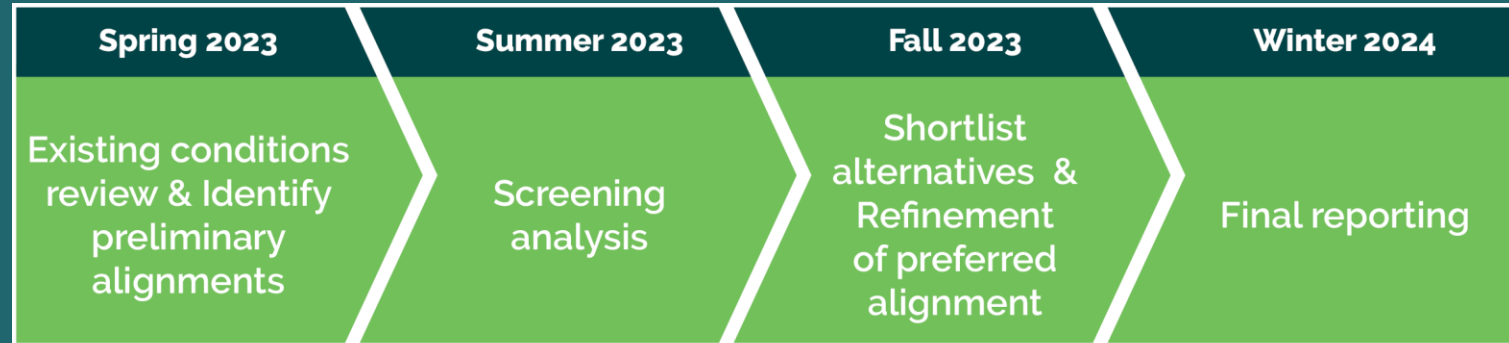


Agenda

- Project Updates
- Public Outreach Update
- Simsbury Update
- Griffin Line Update
- Next Meetings and Next Steps
- Public Comment



Project Updates



TASKS	2023												2024			
	JAN	FEB	MAR	APR	MAY	JUN	JUL	AUG	SEP	OCT	NOV	DEC	JAN	FEB	MAR	APR
Advisory Committee (6)		●		●		●		●		●		●	●		○	
Website Updates (6)		●		●		●		●		●		●	●		●	
Newsletters (3)			■					■						■		
Public Municipal Meetings (6)			●●●												●●●	
Public Workshops (3)				●●●												
Public Meetings (3)														●●●		
Survey								■								
Pop-ups (8)					●	●	●	●	●●	●●						
Stakeholder Meetings and/or Walk-audits (6)					●●	●●	●●	●●								
Direct Municipal Meetings (6)						●●●				●●●						
CRCOG Committee Meetings (2)								●							●	
CTDOT Pitch Meeting													●			





Public Outreach Update



Outreach

Events Attended:

- 3/30 – Simsbury Workshop (approx. 70 attendees)
- 4/11 – East Hartford Workshop (approx. 12 attendees)
- 4/18 – Hartford Workshop (approx. 20 attendees)
- 4/26 – Bloomfield Workshop (approx. 40 attendees)
- 6/17 – East Hartford Juneteenth Pop-Up (engaged with approx. 50 attendees)
- 6/18 – Bloomfield Blue Hills Juneteenth Pop-Up (engaged with approx. 30 attendees)
- 9/17 – Bloomfield Discover CT Bike Ride Pop-Up (engaged with approximately 30 attendees)
- 9/23 – East Hartford Latino Festival Pop-Up (engaged with approx. 30 attendees)
- 9/27 – East Coast Greenway Alliance Annual Meeting (30-40 attendees)
- 10/1 – Hartford DOMINGO Parkville Pop-Up (engaged with approx. 30 attendees)

In-Person outreach with approximately 350 members of the public

Emails: About 190 unique email addresses

Comments:

- 25 logged comments (email / online form)
- Approx. 65 submissions on interactive map



Future Engagement

Winter 2023-2024

- Community Pop-up Events (3 more)
- **1-on-1 Stakeholder Meetings**
- Email and Newsletters (1 more newsletter min.)
- Final Public Meetings
- Town Council Meetings / Approval

What?

- Visualizations and additional detail of Shortlisted Alignments
- In-person site visits with stakeholders on Shortlisted Alignments
- Review of project process
- Summary of report recommendations



Simsbury Update



Simsbury Update

- Town of Simsbury Recommendations Report Draft Available now at: crcog.org/town-of-simsbury-capitol-region-ecg/
- Public comment period through January 15, 2023 – email pgoff@vhb.com
- Project E-Blast to be sent out this week. Additional outreach by towns and organizations welcome!

**TOWN OF SIMSBURY
RECOMMENDATIONS REPORT**
DECEMBER 2023 DRAFT

CAPITOL REGION
**EAST COAST
GREENWAY STUDY**
SIMSBURY — BLOOMFIELD — HARTFORD — EAST HARTFORD

CRCOG
CAPITOL REGION COUNCIL OF GOVERNMENTS

**FHI
studio**

vhb

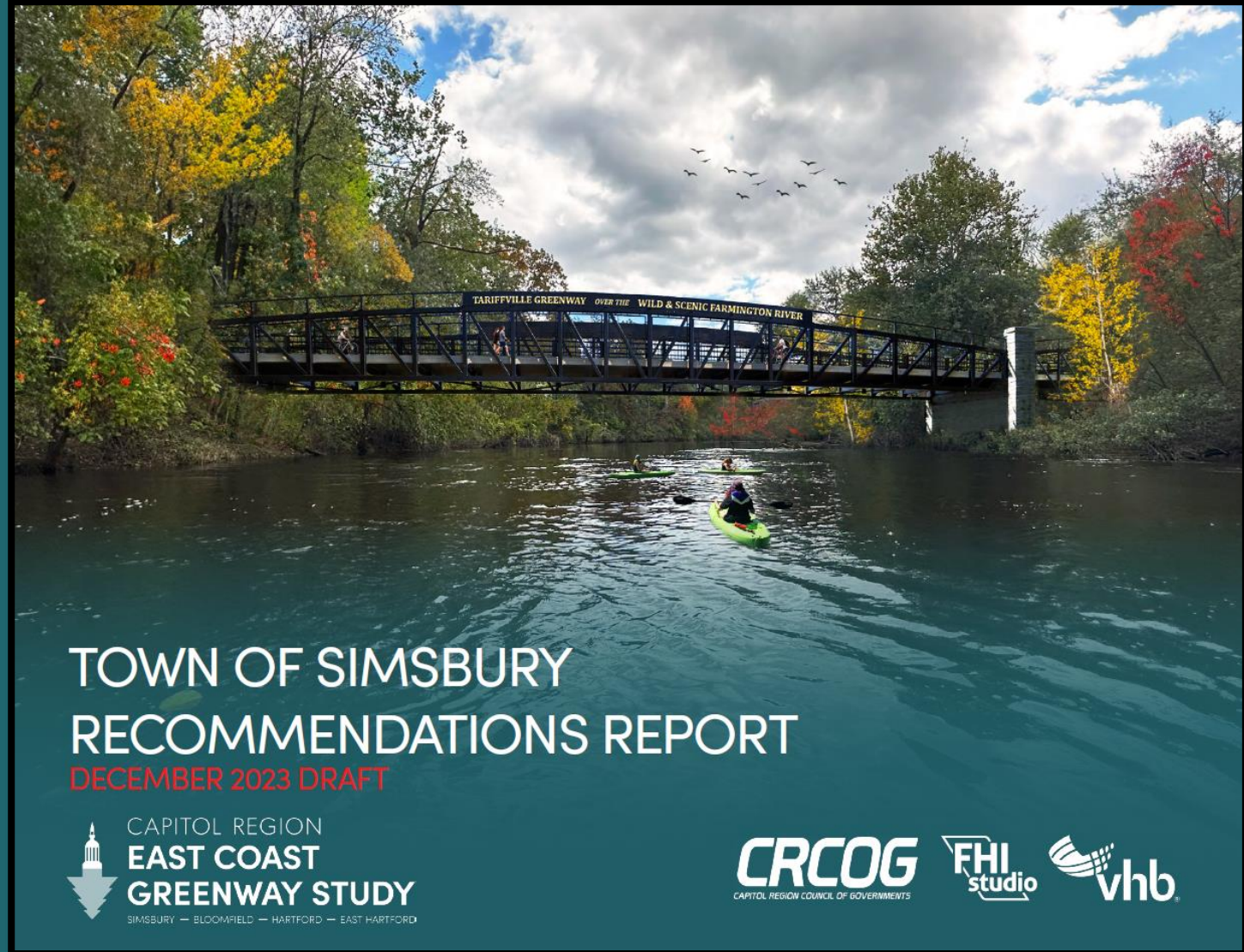


Simsbury Next Steps

January 2024 – Finalize Report

January 2024 – CRCOG
Approvals

Suggested Schedule in Report:
Design: 2024 – 2026
Construction: 2027 – 2028



TOWN OF SIMSBURY
RECOMMENDATIONS REPORT
DECEMBER 2023 DRAFT



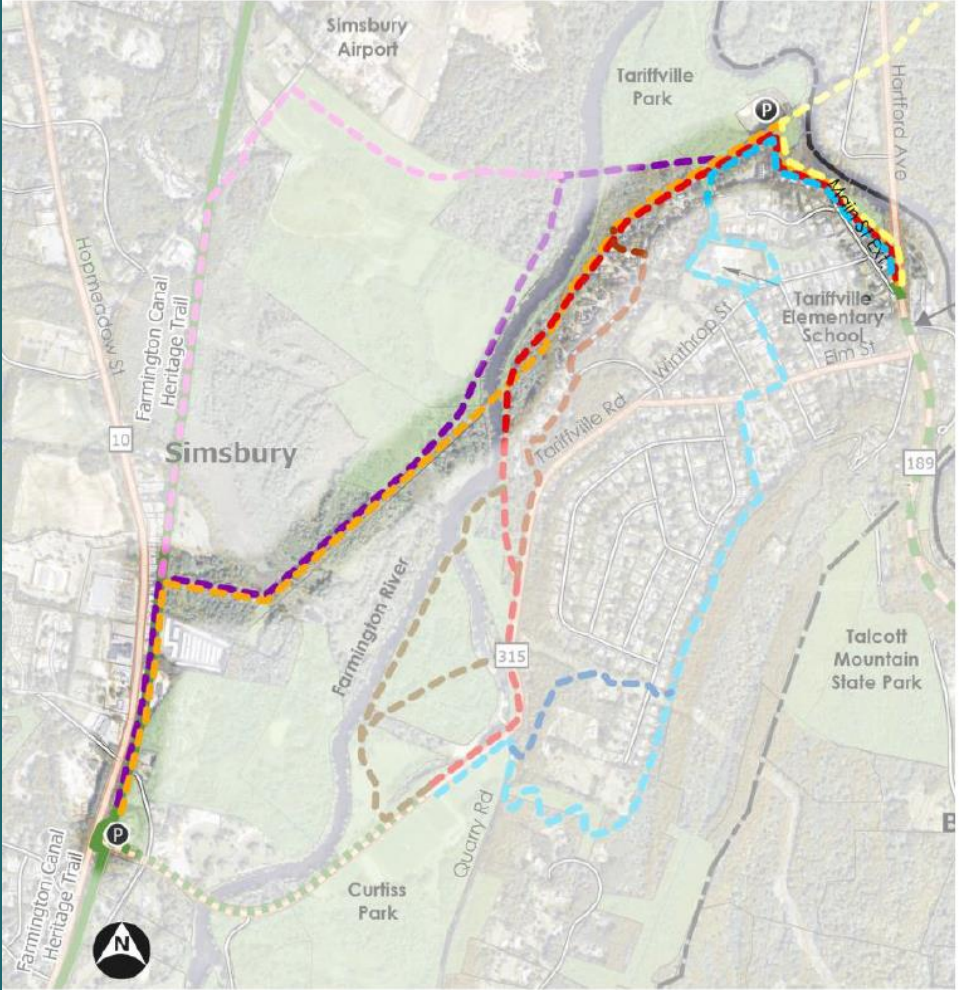
CAPITOL REGION
EAST COAST
GREENWAY STUDY

SIMSBURY — BLOOMFIELD — HARTFORD — EAST HARTFORD



Simsbury Highlights

\$13.13M “Alternative 2” Recommended



Legend

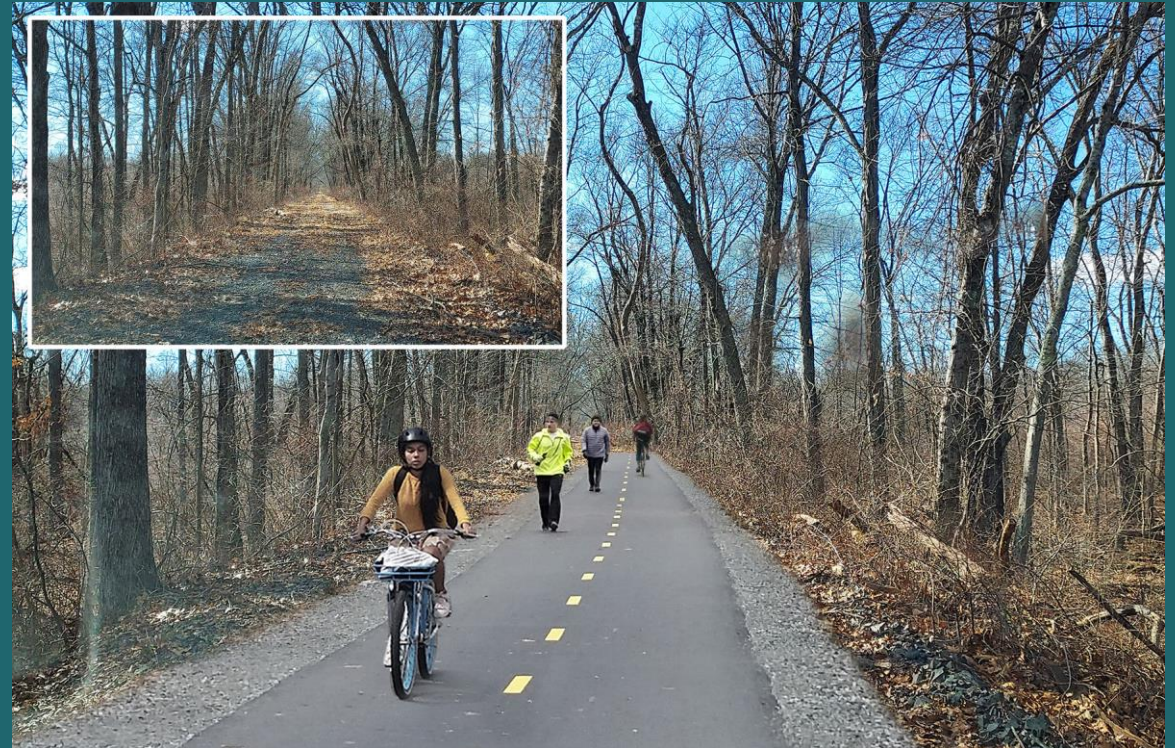
Multi-Use Trails	<ul style="list-style-type: none"> ■ Existing ■ In Construction ■ In Design ■ Major Roads ■ Public Open Space P Existing Trail Parking 	Simsbury Trail Alignments Studied <ul style="list-style-type: none"> — Alternative 1 A — Alternative 1 B — Alternative 2 — Alternative 3 A — Alternative 3 B — Alternative 3 C — Alternative 4 A — Alternative 4 B — Alternative 5
------------------	---	--

Simsbury Highlights



West of Farmington River:

- Trail utilizes Access Road
- Trail on top of abandoned rail embankment
- Requires easement through private property



Simsbury Highlights



At Farmington River:

- Crossing at historic rail crossing
- Approximately 575-feet between embankment end on west side and historic bridge abutment on east side
- 400-feet of this distance lies west of main course of Farmington River
 - Design details in this section TBD in design (bridge vs boardwalk etc.)





Simsbury Highlights

East of Farmington River

- Recommended to follow historic rail corridor with two exceptions:
 - Near 6 White Water Turn where historic rail corridor is closest to residences – approximately 20-feet
 - 1,500 LF between 14 Tanager Circle and 40 White Water Turn where historic rail bed was built over by condominiums in 1980's
- ½-mile requires easement through private property



Simsbury Highlights



East of Farmington River

- At 6 White Water Turn: Alternative to consider trail off the rail embankment is identified (shown in red)



Simsbury Highlights



East of Farmington River

- At 6 White Water Turn: Alternative to consider trail off the rail embankment is identified (shown in red)
- Between 14 Tanager Circle and 40 White Water Turn: Riverbank is generally steeper than other areas. Consider routing the trail closer to the Farmington River while still keeping the trail outside of the river floodway or floodplain.





Griffin Line Update



Griffin Line On-Going Activities

- Site Visit took place November 21 (CTDOT, City of Hartford, iQuilt, FHI Studio)
- On-going meetings with CTDOT Office of Rail, City of Hartford and iQuilt
- Consultant team and CRCOG developing *Griffin Line Feasibility Assessment Technical Memorandum* with draft to review in early January:
 - Existing Conditions
 - Case Studies and Regional Examples
 - Relevant Standards & Design Guidance
 - Rail-with-Trail Alternative Analysis
 - Illustrative Cross Sections
 - Mapping
 - Opinions of Probable Cost
 - Economic Development Benefits
 - Preferred Alternative
 - Concept Plan
 - 3D Visualization



Griffin Line Site Visit Discussion

- Private property easements likely required in narrow ROW near Garden Street
- Generally, north side has several adjacent buildings that would require building demolition, significant site changes or rail realignment if trail were to be routed on this side:
 - 51 Homestead Ave (St Francis Parking)
 - 255 Homestead Ave (Chrysalis Center)
 - 287 Homestead Ave
 - 333 Homestead Ave (Salvation Army)
 - 425 Homestead Ave
 - 1535 Albany (Car Wash)
 - Eversource Transmission Towers (x2)



Griffin Line Site Visit Discussion

- Rail-with-trail on south side has less obstructions
- 156 Woodland Street (Austin Organs) represents the closest building on south side (+/- 26-feet at closest point)
- Sigourney Street Bridge
 - Concept to route trail between bridge pier and abutment
- Woodland Street Bridge
 - Narrowest bridge. Requires replacement with wider structure or new culvert. Alternative could be ramp up to Woodland Drive signal
- Albany Avenue Bridge
 - Culvert to west of bridge discussed as possibility. Routing trail under current bridge would require rail realignment.

Site Visit



View looking west from Garden Street



Site Visit



View looking west at Sigourney Street bridge



Site Visit



South abutment wall at Sigourney Street bridge



Site Visit

View looking east towards Sigourney Street bridge



Site Visit

View looking west between Sigourney and Woodland Street



Site Visit

View looking west between Sigourney and Woodland Street



Site Visit

View looking west towards Woodland Street, Austin Organs (left) and Chrysalis Center (right)





Site Visit - VIDEO

View looking west towards Woodland Street, Austin Organs (left) and Chrysalis Center (right)



Site Visit

View looking west towards Woodland Street bridge and Chrysalis Center (right)



Site Visit

View looking east towards Austin Organs (right) and Chrysalis Center (left)



Site Visit

View looking east towards Woodland Street bridge



Site Visit



View looking east towards Woodland Street bridge



Site Visit

View looking east towards 333 Homestead Ave (Salvation Army)



Site Visit

View looking west at 333 Homestead Ave (Salvation Army)



Site Visit

View looking north towards Albany Avenue bridge (right- 425 Homestead Ave)



Site Visit

View looking north towards Albany Avenue bridge





Griffin Line

For the Hartford – Bloomfield Gap, we expect our shortlist will include:

- 1) Best Griffin Line option
- 2) Next best alternative





Next Meetings and Next Steps

- Wednesday, January 31st, 2023 – 11:00 – 12:30
- March 2024 – TBD



Public Comment

Thank You!

Thank You!



Parker Sorenson, PE
psorenson@fhistudio.com
860-256-4905

Caitlin Palmer
cpalmer@crcog.org
860-724-4435