



CRCOG



US-44 Corridor Study Public Meeting

Canton Community Center, 40 Dyer Ave, Canton CT

Existing Conditions Overview

December 7, 2023





Route 44 Corridor Study Public Meeting Agenda

- 6:00** ■ Welcome and Introductions
- Meeting Format
 - Project Overview
 - Existing Conditions Presentation
 - Issues Observed
 - Summary
 - Findings
 - Public Engagement
- 6:40** ■ Q&A
- 7:00** ■ Map Review & Comments
- 7:30** ■ Meeting Ends/Begin Temporary Traffic & Pedestrian Safety Advisory Committee (Town)



Meeting Format

- In-person & Online
- For In-person:
 - Presentation and then Q&A
 - Please sign up for Q&A
 - 4 maps around the room for review & comment
- For Online participants (Zoom)
 - Your cameras and microphone will be disabled during the meeting.
 - We will share all pertinent information via the chat.
 - At the end of the presentation there will be a Q & A period; please submit questions in the chat box.
 - Opportunity to comment on maps as well to online meeting facilitator
- This meeting is being recorded

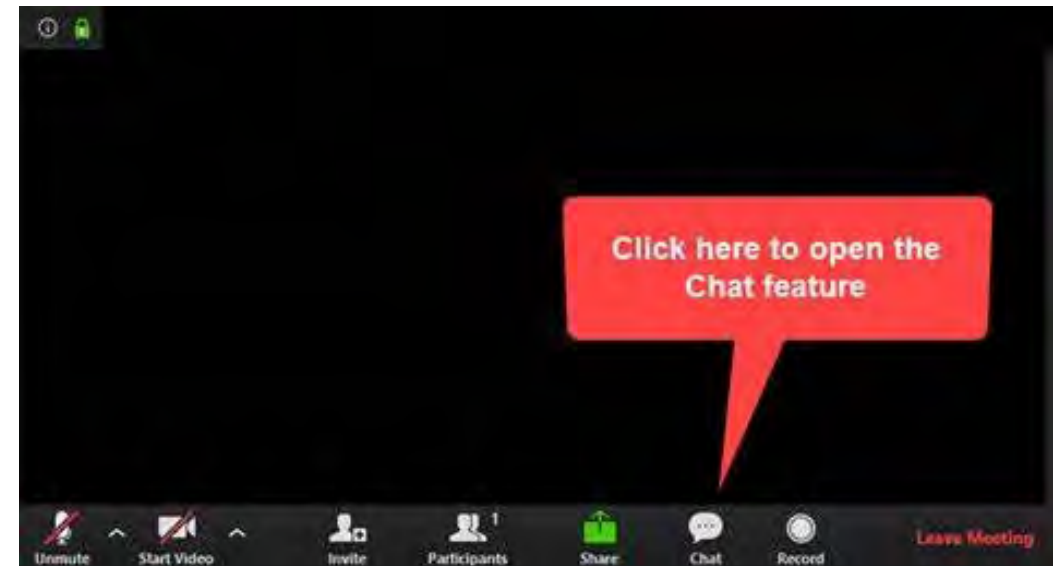
  **US-44 Corridor Study Public Meeting**
Canton Community Center, 40 Dyer Ave, Canton CT

Route 44 Corridor Study Public Information Meeting, December 7, 2023

Q&A Sign Up Sheet

For Q&A after meeting presentation. Questions are limited to 3 minutes per person.

	Name	Address
1		
2		
3		
4		



Route 44 Corridor History

- CTDOT and CRCOG previous corridor study (2000)
 - "The Old Stagecoach is Getting an Overhaul"
 - Correct left turn accident problems in commercial area of Eastern Canton with median
 - Median to be sufficiently wide (24') to create attractive boulevard-type appearance
 - Signalization of intersections
- Traffic volumes peaked before Great Recession (2008): 31k ADT
 - Today: 26k ADT
- US Route 44–National Highway System

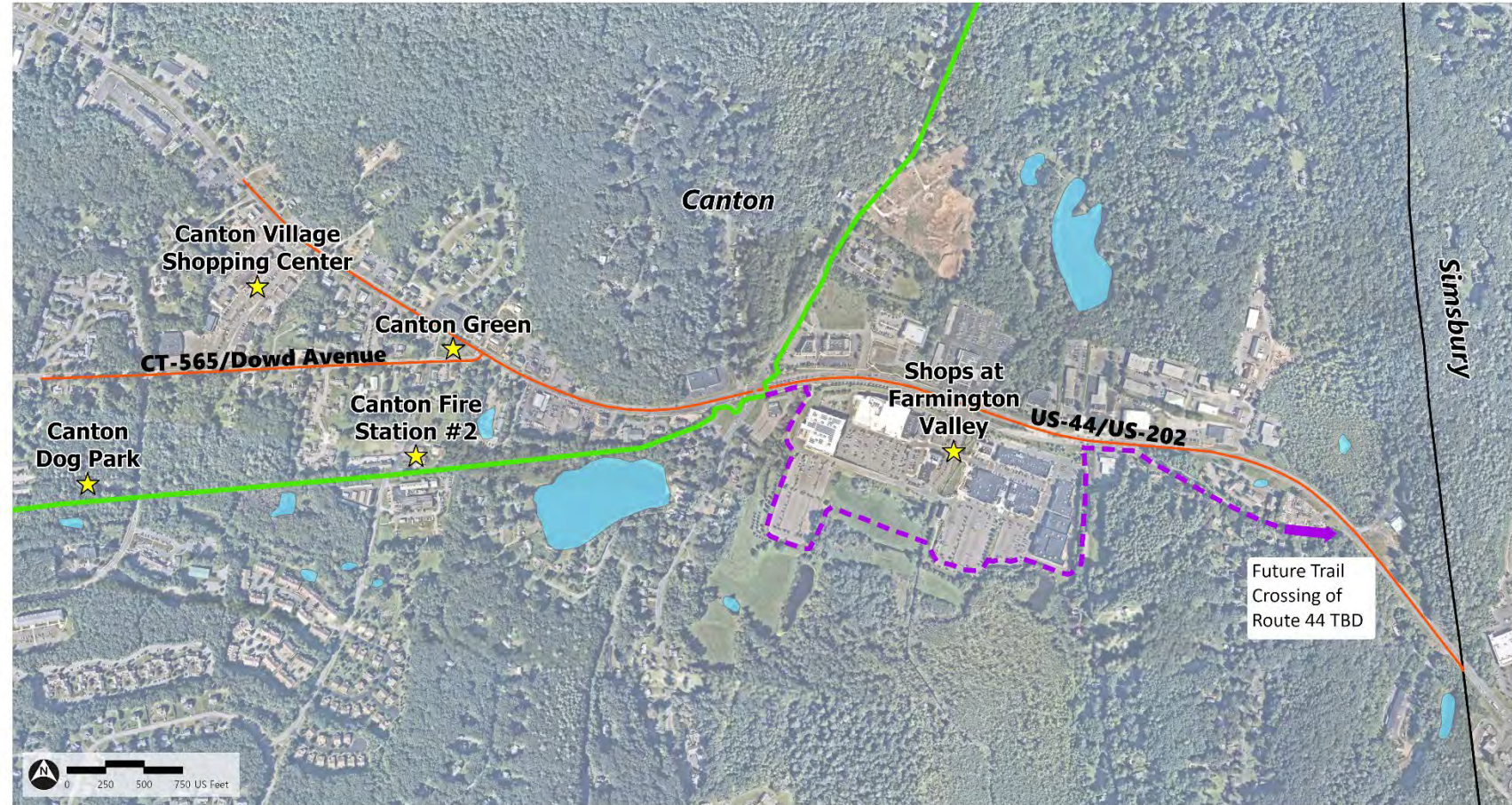


Route 44 Corridor Study Limits

- US-44 from Simsbury Town Line to approx. Old Canton Road (near Canton Village Shops)
- Dowd Ave (CT 565) from US-44 to Canton Hollow

Study Area Roadways
US-44 Corridor Study | Canton, CT

December 6, 2023



★ Key Destinations

— US-44 Canton Study Area Roadways

■ Water Bodies

— Farmington River Trail

— Farmington River Trail Proposed Extension

Route 44 Corridor Study Overview

- High-volume, high-speed arterial corridor with substantial through traffic
- Connects to Hartford and points west
- Primary commercial area of Canton
- Significant new development in recent years
- Dominated by automobile traffic



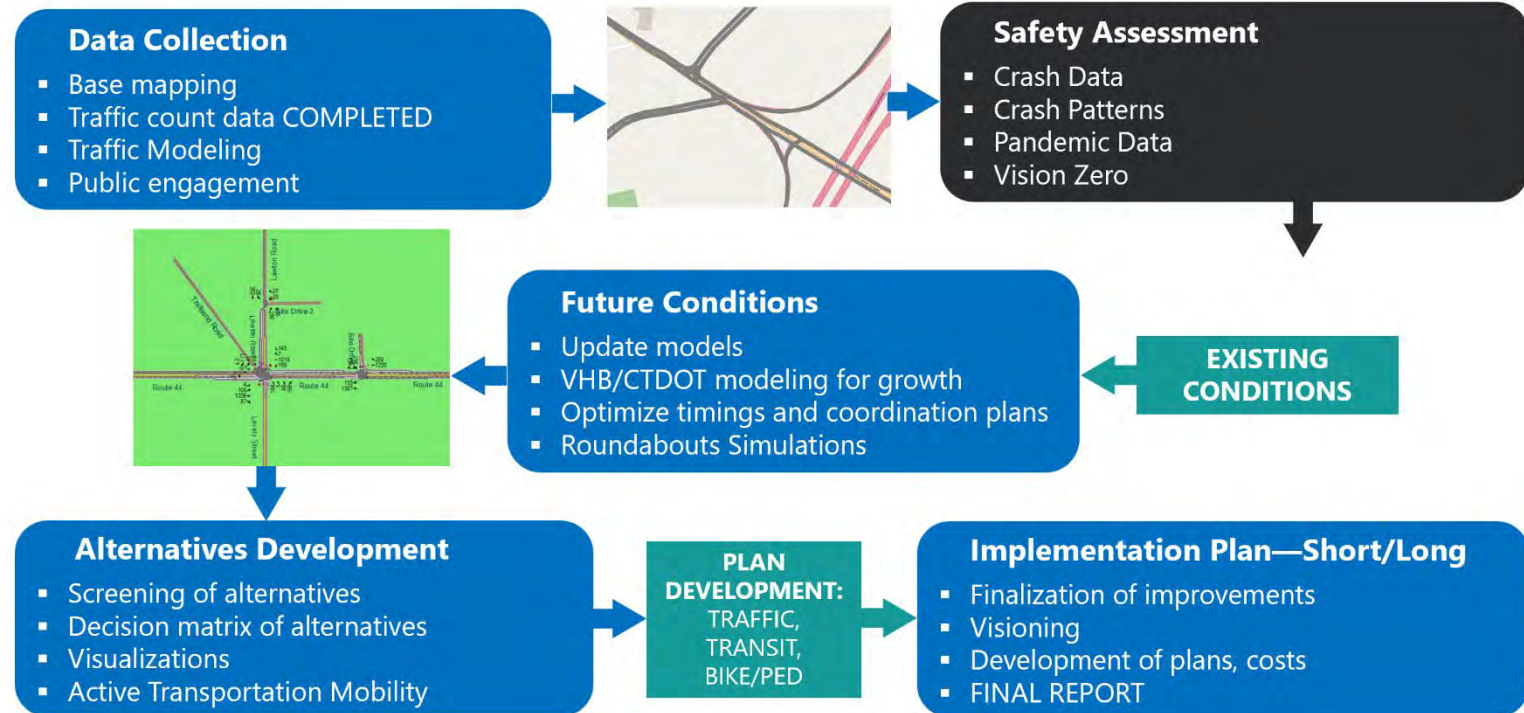
Route 44 Corridor Study Goals

- Review corridor and develop recommendations to create a multimodal transportation corridor with transportation options for residents and visitors
 - Support opportunities created by new development to be more compact and walkable
 - Town Design Village Districts
 - Farmington River Trail extension
 - Improve access to alternative modes
- Identify potential changes to Route 44 over next 20 years



Route 44 Corridor Study Process

- Collect Data on Existing Conditions
- Assess Existing Conditions
- Assess Future Conditions
- Identify & Analyze Alternatives
- Develop Concepts
- Creation of Transportation Improvement and Development Management Plan
- Public Outreach Throughout



Traffic



Traffic Observations

- High speeds versus posted speeds and weaving movements
- Morning queues on Dowd Ave to turn right onto US-44; 15-20 vehicles long at times
- No left-turn lane from US-44 to Dowd Ave, drivers weaving around those stopped for left turn
- Typical traffic conditions for this type of corridor
- Route 177/Lawton Road intersection – recurring congestion and backups



Traffic Counts

- Significant daily traffic volumes, with 26,000 vehicles on an average weekday
- Dowd Avenue carries about 8,600 vehicles per day
- Tuesday has highest volume, then declines through remainder of the week (work from home)
- Over last 15 years volumes have decreased from a high of 32,600 vehicles per day in 2007

Table 1 2023 Existing Weekday Average Daily Traffic Volume Summary

Location	Weekday Average Daily Traffic (ADT)
Route 44 West of Route 177 (WB)	15,046
Route 44 West of Route 177 (EB)	11,854
	26,900 (Total)
Route 44 West of Secret Lake Road	22,750
Dowd Avenue West of Route 44	8,600
Route 44 West of Dowd Avenue	18,800
Route 177 South of Route 44	8,400
Route 177 North of Route 44	6,700
Route 44 East of Route 177	23,100

Source: ATR counts for first three locations conducted in October 2023.
All other locations conducted in November 2022.

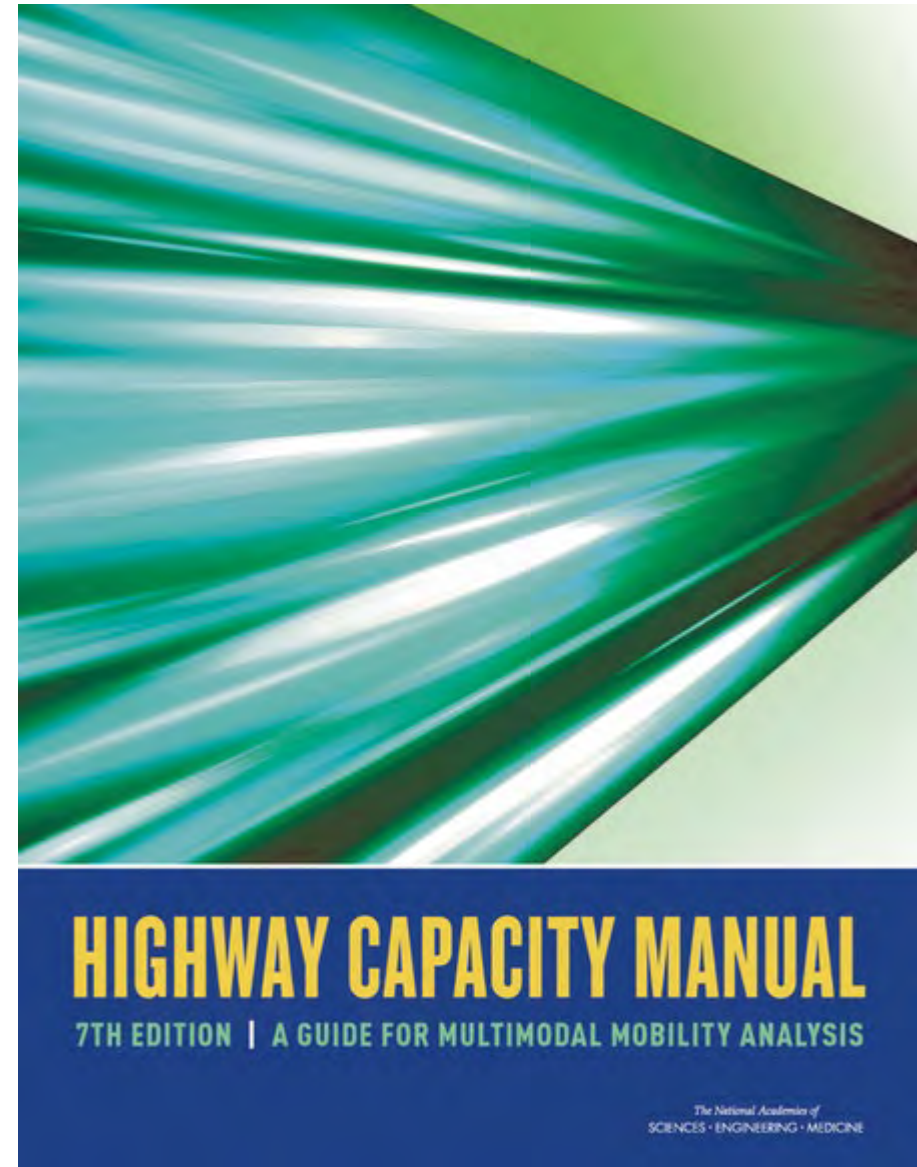
Intersection Capacity Analyses

- Evaluate existing conditions and various alternatives
- Study Area:
 - 6 Signalized Intersections
 - Other key locations affected by improvement alternatives
- Synchro Software
 - CTDOT required analysis of signalized intersections
 - LOS and queues, volume to capacity



Capacity Analysis Terms

- CTDOT Standards
- Volume to capacity
 - Does Traffic Volume Exceed Capacity?
 - Over 1, Yes.
- Levels Of Service
 - Based on Delays (seconds/vehicle)
 - Operating Conditions
 - A Best
 - F Worst
- Queues
 - Stopped Vehicles
 - Backups



Capacity Analyses - Results

Signalized Intersection Level of Service Summary

Location	Level of Service		
	Morning	Mid-Day	Evening
Canton Village Shopping Mall & Route 44	A	A	B
Dowd Avenue & Route 44	B	B	B
Lovely Street/Lawton Road/Trailsend Drive & Route 44	D	E	E
CVS Drive & Route 44	A	A	A
Shops at Farmington Valley/Private Driveway & Route 44	B	C	C
Secret Lake Road/Acura o Avon & Route 44	A	B	B

Route 177/Lawton Road

v/c, LOS, Queues

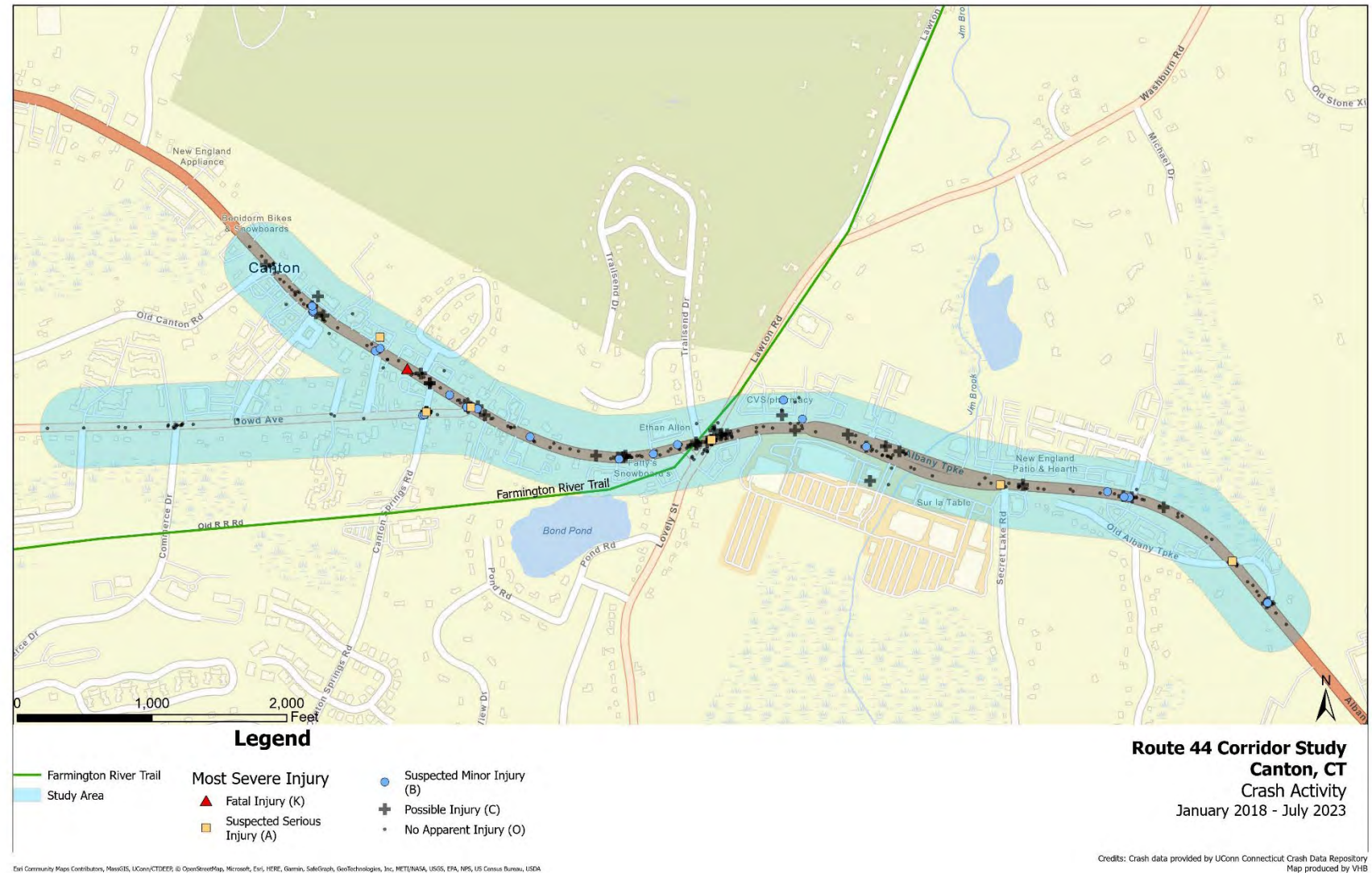
	AM			Midday			PM		
	v/c	LOS	Q95	v/c	LOS	Q95	v/c	LOS	Q95
EB L	0.93	F	384	0.84	F	332	>1.20	F	405
EB T	0.83	D	562	0.9	E	818	0.73	D	486
EB R	0.06	A	0	0.04	A	0	0.04	A	0
WB L	0.5	E	90	0.87	F	402	0.77	E	226
WB T	0.46	C	221	0.81	D	711	0.93	D	737
WB R 2	0.02	A	0	0.07	A	0	0.07	A	0
NB L	0.69	E	192	0.79	F	262	1.04	F	330
NB T	0.41	D	136	0.37	E	138	0.47	E	147
NB R	0.22	D	64	0.12	D	56	0.25	D	63
SB L/T	0.68	E	167	1.07	F	433	0.77	E	289
SB R	0.65	E	126	0.81	F	242	0.89	E	273
SE L	0.61	E	73	0.65	F	71	0.7	F	58
Overall	0.85	D		0.82	E		1.01	E	

Safety



Safety

- Connecticut Crash Data Repository (January 2018-July 2023)
- Collects and tabulates crash reports around the state
 - **456 crashes** on Route 44 and Dowd Avenue
 - 39% at key intersections
 - 21% angle
 - 46% rear end
 - **79 injury crashes**
 - 20% at key intersections
 - 44% angle
 - 34% rear end
 - **1 fatality** on Route 44 (Pedestrian in 2018) just west of Canton Valley Circle



Safety

- Crash density – all crashes
 - Most crashes at Route 44/Lawton Road/Lovely Street (70)
 - Second highest crash location at Route 44/Dowd Avenue (50)



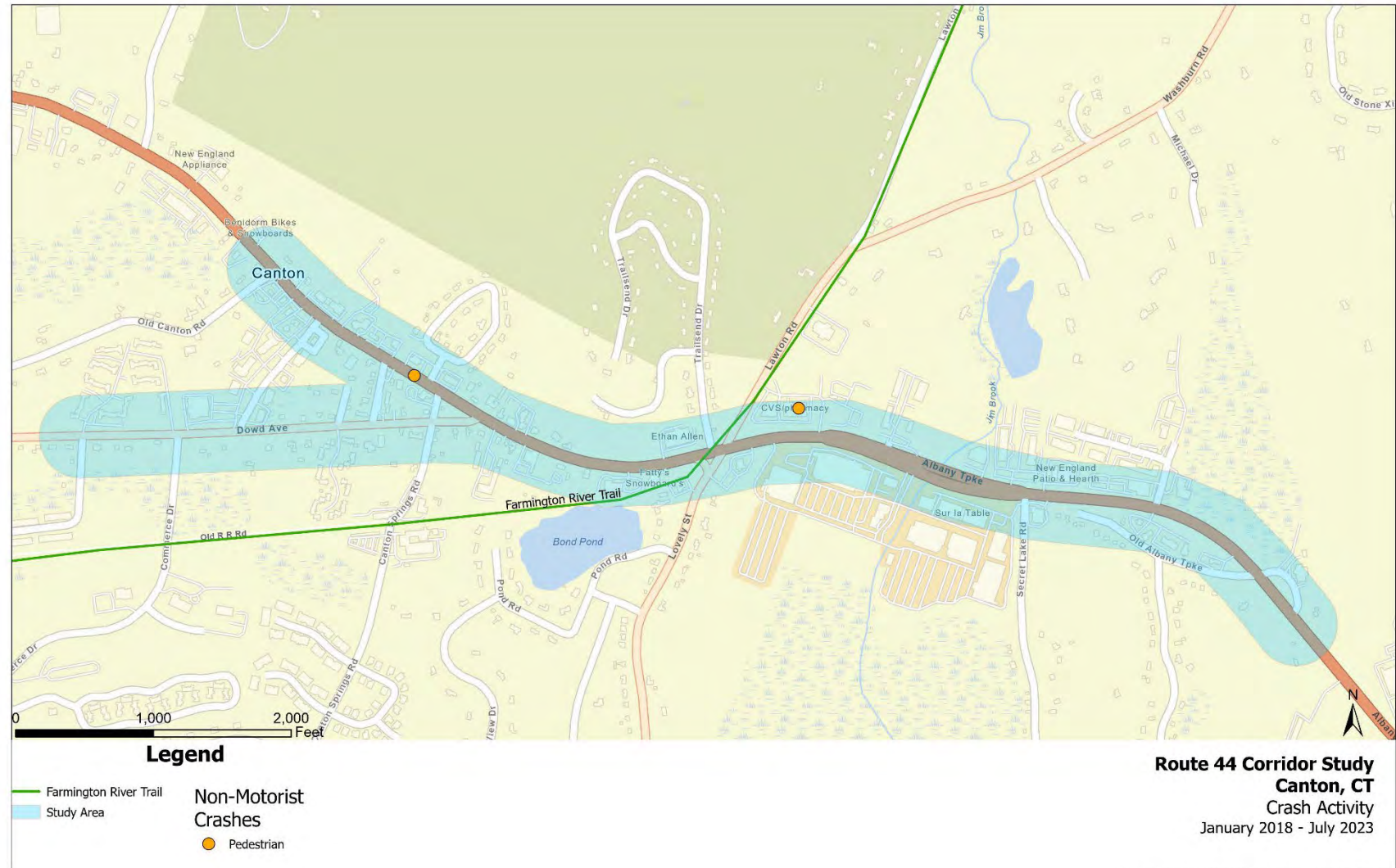
Safety

- Crash density –injury crashes (fatal, serious injury, minor injury)
 - Most injury crashes at Route 44/Dowd Avenue (8)
 - Second highest injury crash location at Dowd Avenue at Canton Springs Road



Safety

- Pedestrian involved crashes
 - 2 crashes reported in study area
 - One was a fatality on Route 44 just west of Canton Circle
- No bicycle involved crashes were reported in this period



Pedestrians and Bicyclists

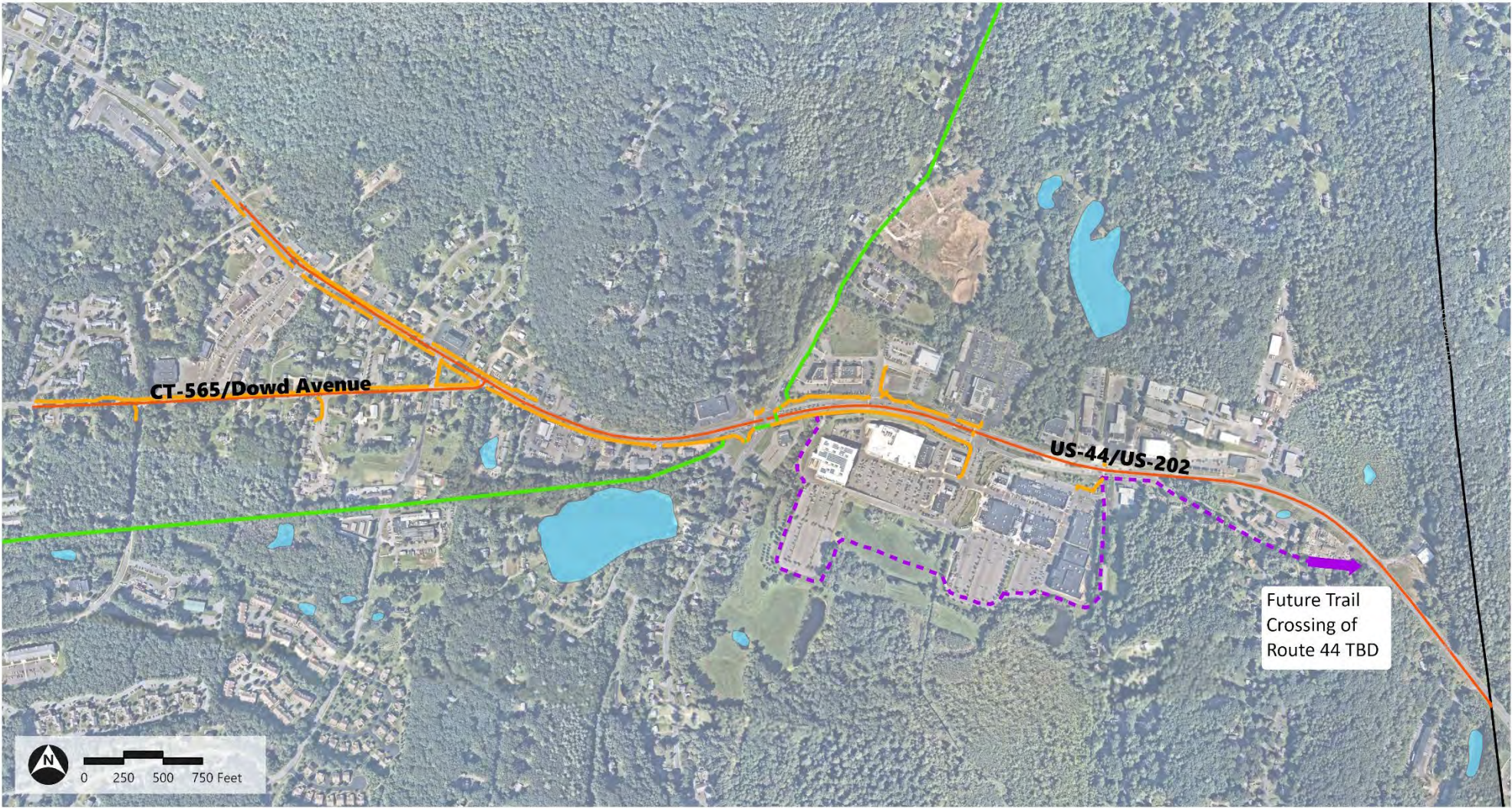


Observations: Pedestrians and Bicyclists

- In corridor, lowest pedestrian activity along US-44, highest in Shops at Farmington Valley
- RRFBs assist with crossing Dowd Ave
- Canton Village Shops has no defined pedestrian path for internal circulation
- US-44 between Canton Village Shops and Lovely St – some sidewalk in poor condition, lack of grass strip buffer in some areas
- Town has trail study for extension of Farmington River Trail underway



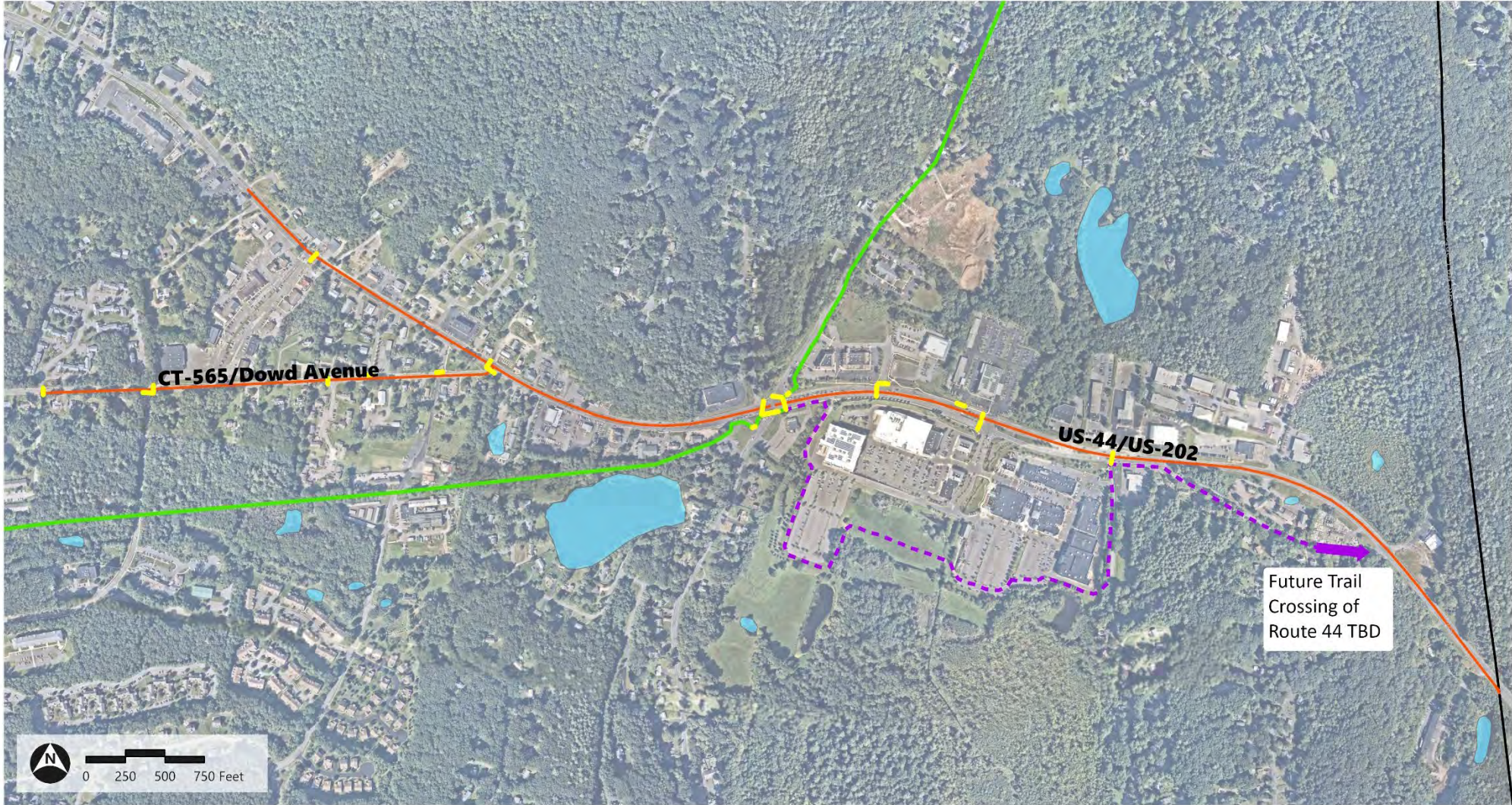
Pedestrian Infrastructure: Sidewalks



- US-44 Canton Study Area Roadways
- Farmington River Trail
- Farmington River Trail Proposed Extension
- Existing Sidewalks
- Water Bodies
- Town Line

Source: Town of Canton, VHB

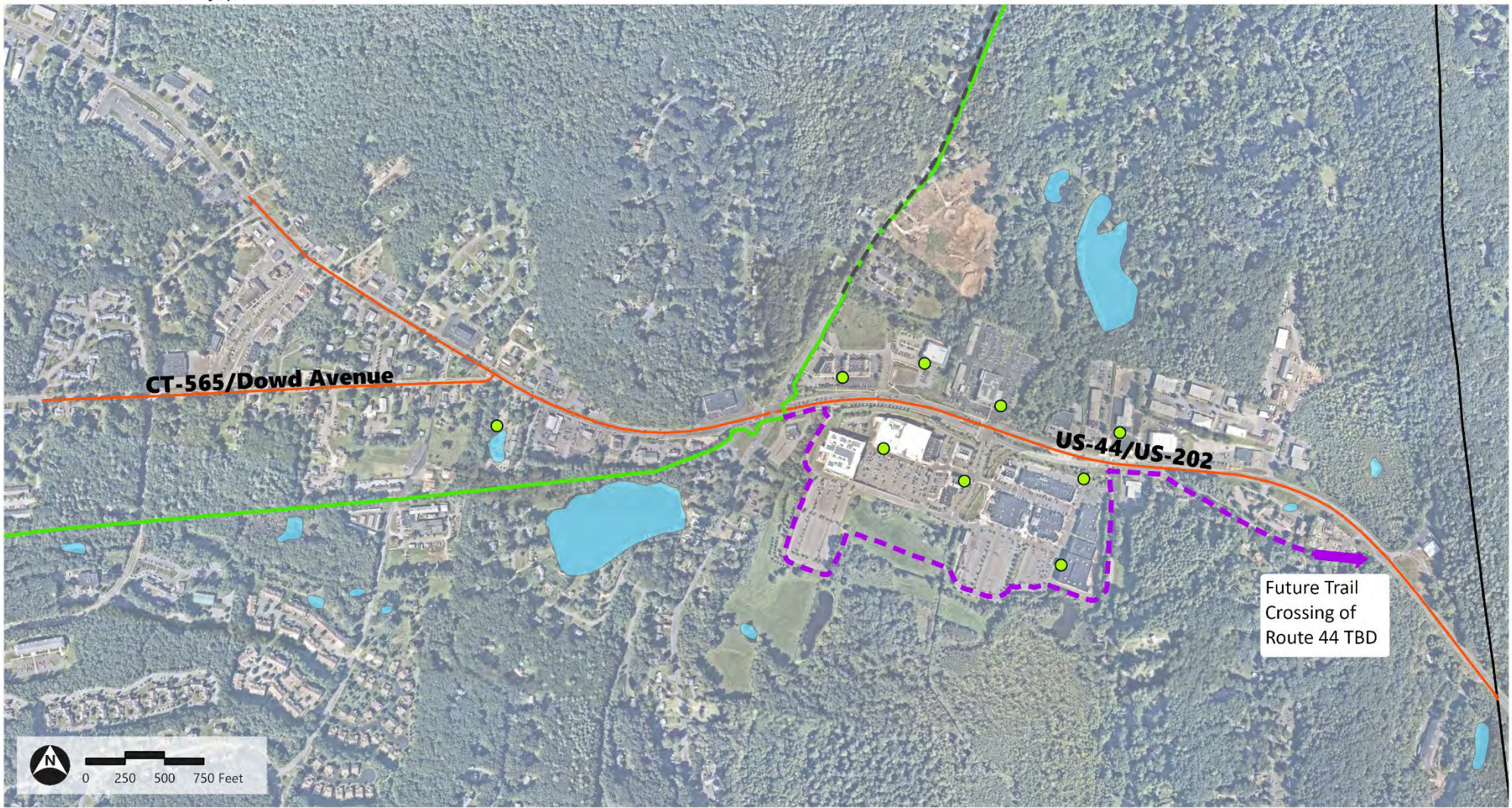
Pedestrian Infrastructure: Crosswalks



- US-44 Canton Study Area Roadways
- Farmington River Trail
- Farmington River Trail Proposed Extension
- Existing Crosswalks
- Water Bodies
- Town Line

Source: Town of Canton, VHB

Bicycle Accommodations



— US-44 Canton Study Area Roadways

■ Water Bodies

□ Town Line

— Farmington River Trail

- - Farmington River Trail Proposed Extension

● Bike Racks

- - On-Road Bicycle Planning Network (CTDOT)

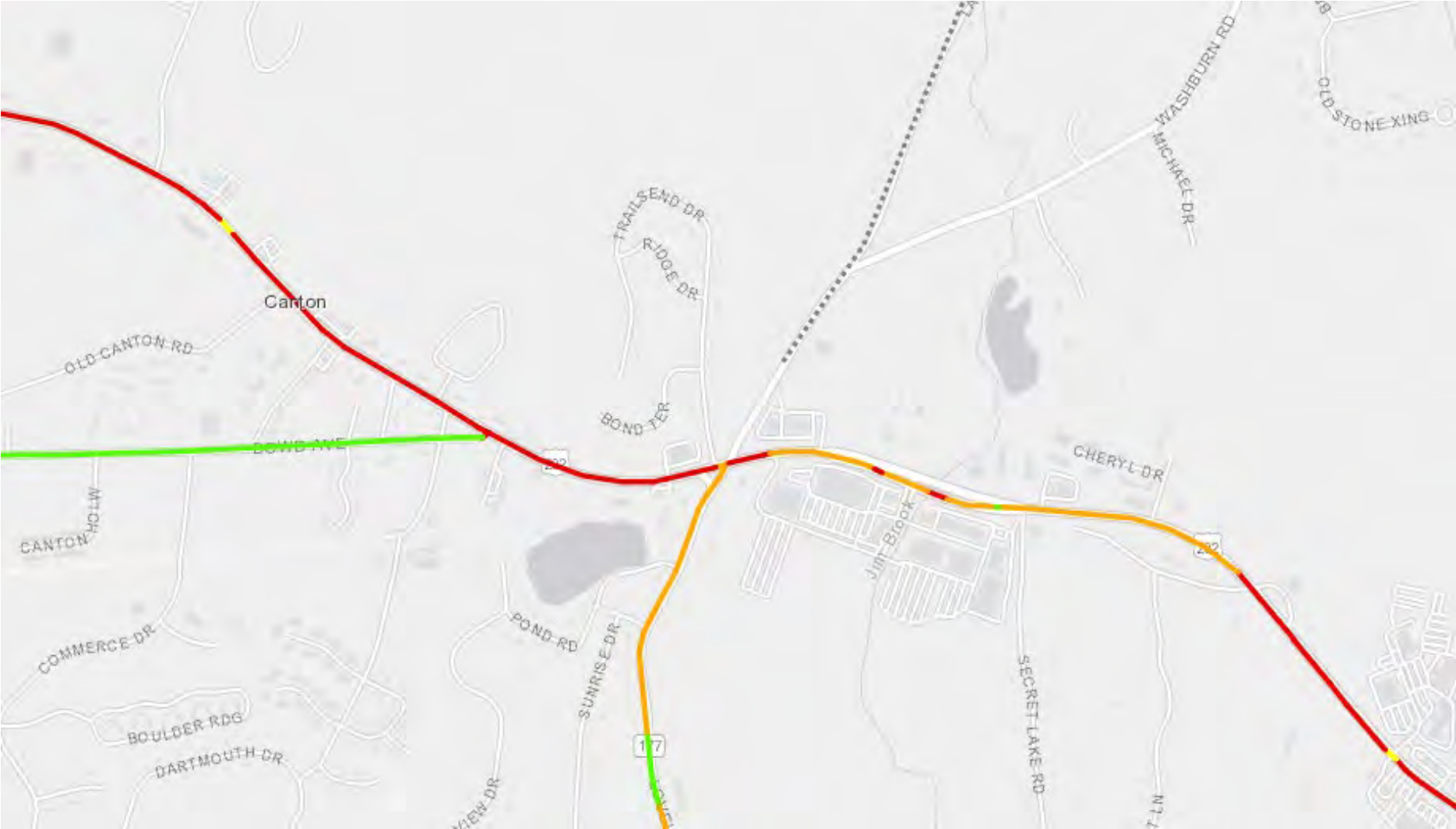
Future Trail Crossing of Route 44 TBD

Source: Town of Canton, VHB

Path: \\whb.com\gis\proj\Wethersfield\43281\00 Route 44 Corridor Study\Project\Routes 44 Corridor Basemapping\Route 44 Canton Basemapping_v3_120623.aprx (damstutz, 12/6/2023)

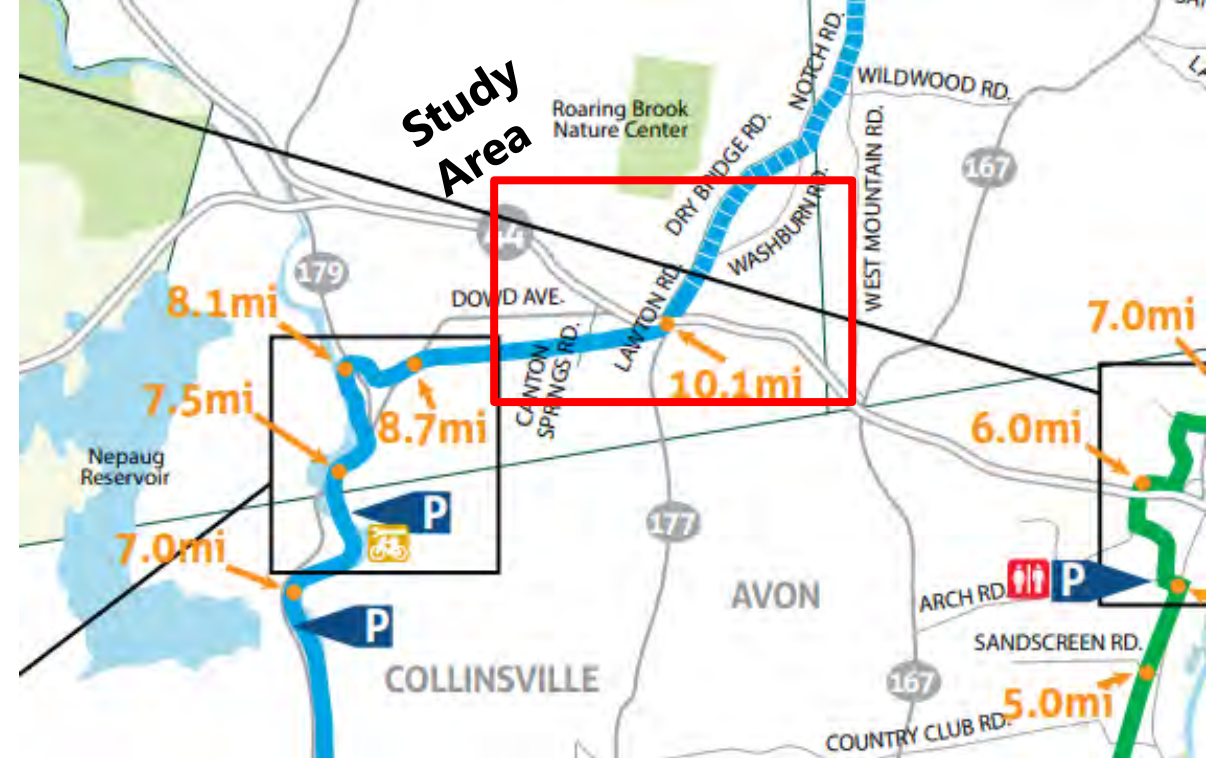
Bicycle Suitability (From CT Active Transportation Plan)

- Least Suitable
- Less Suitable
- Suitable
- More Suitable
- Most Suitable



Farmington River Trail

- Runs 16 miles in a half-circle west coming off the Farmington Canal Heritage Trail
- Passes directly adjacent to and through the study area
- Key spine of bicycle and pedestrian access to the study area
- Extension planned through the Shoppes at Farmington Valley



FRT Planned Extension – By Town



- US-44 Canton Study Area Roadways
- Farmington River Trail
- Water Bodies
- Farmington River Trail Proposed Extension
- Town Line

Source: Town of Canton, VHB

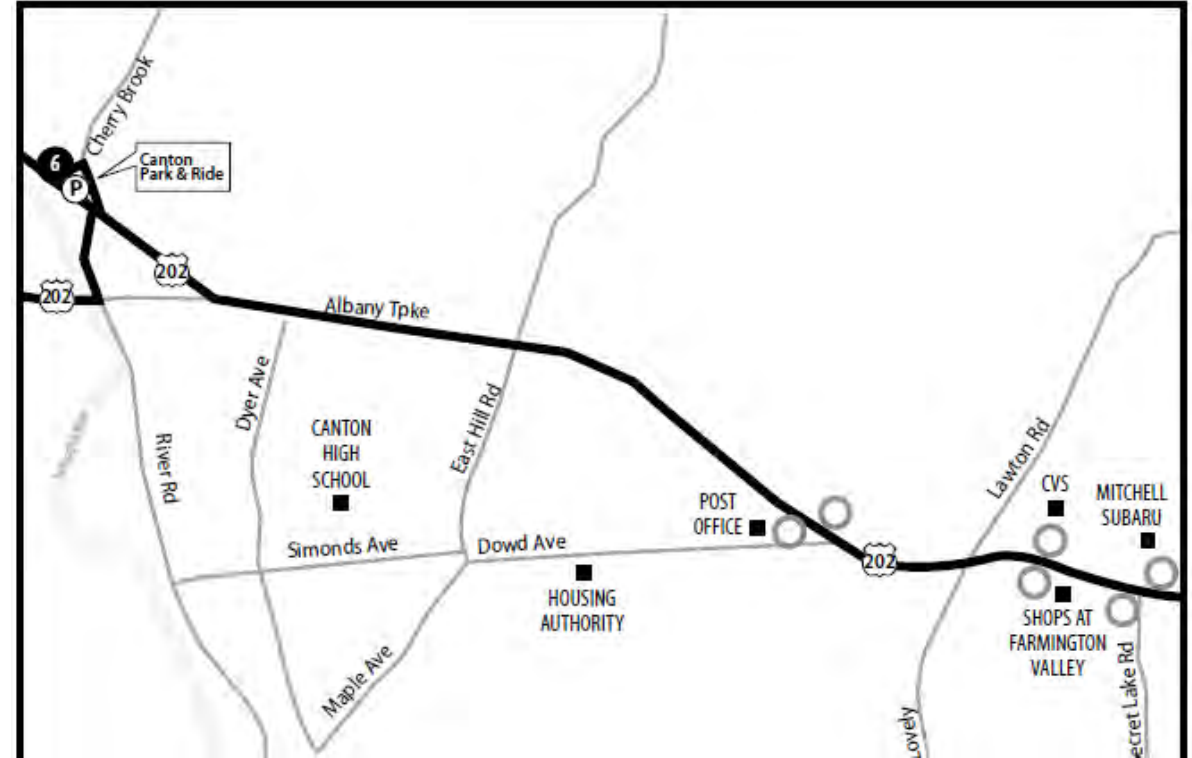
Path: \\vhb.com\gis\proj\Weatherfield\43281.00 Route 44 Corridor Study\Project\Route 44 Canton Basemapping\Route 44 Canton Basemapping_v3_120623.aprx (damstutz, 12/16/2023)

Public Transportation



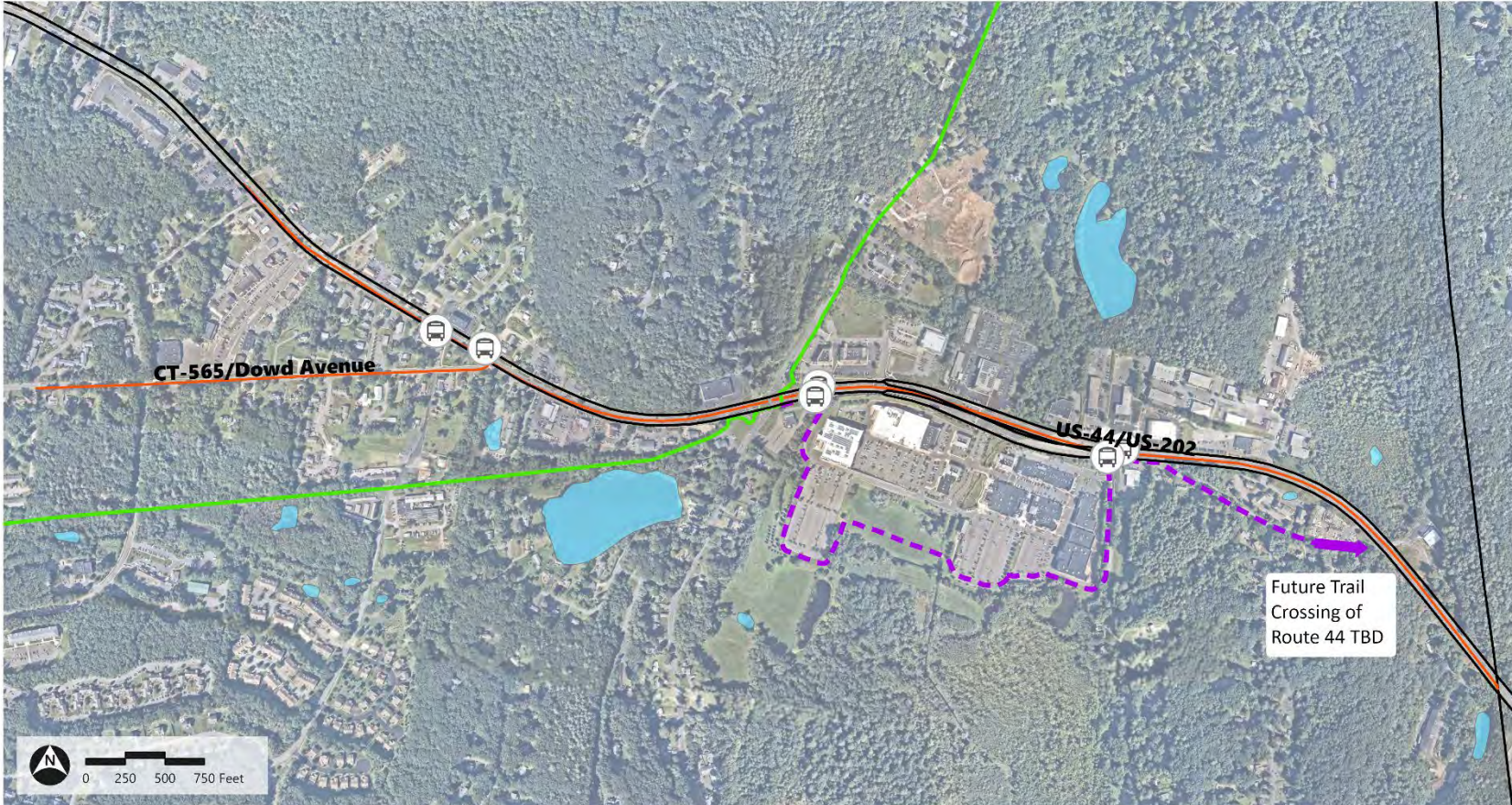
Public Transportation

- Three express bus routes that travel through Canton: 901, 926, 927; there is also a combined 926/927 run in the mid-day
- Weekday service only
- Frequency – 9 round trips per day:
 - 3 buses to Canton in AM, 6 in PM
 - 5 buses from Canton in AM, 4 in PM
- Three bus stop pairs in the study area:
 - US-44 at Secret Lake Road
 - US-44 at Lovely Street/Lawton Road
 - US-44 at Dowd Avenue
- In addition, three school bus routes in study area for Cherrybrook Elementary, Canton Intermediate, and Canton High



Fare Zone	○ West Main St. at M & T Bank	5:58	6:13	7:38
	○ West Main St. at Avon Marketplace	5:59	6:14	7:39
	SIMSBURY			
	○ Albany Tpke. at McDonalds	6:00	6:15	7:40
	CANTON			
	○ Albany Tpke. & Secret Lake Rd.	6:02	6:16	7:42
	○ Albany Tpke. & Lawton Rd.	6:02	6:17	7:42
	○ Albany Tpke. & Dowd Ave.	6:04	6:19	7:44
	● 6 Canton Park & Ride - Albany Tpke. & Cherry Brook Rd.	6:09	6:24	7:49

Transit Infrastructure & Usage



- US-44 Canton Study Area Roadways
- Farmington River Trail
- - - Farmington River Trail Proposed Extension
- Water Bodies
- Town Line
- Bus Routes
- ⋮ Bus Stops

Source: Town of Canton, VHB

Table 9 Routes 901, 926, 927, and 926/927 Average Daily Boardings

Average Daily Boardings	FY 2020	FY 2021	FY 2022	FY 2023
Route 901	142	45	26	29
Route 926	18	7	25	37
Route 927	26	10	26	36
Route 926/927	N/A	N/A	9	19

Land Use

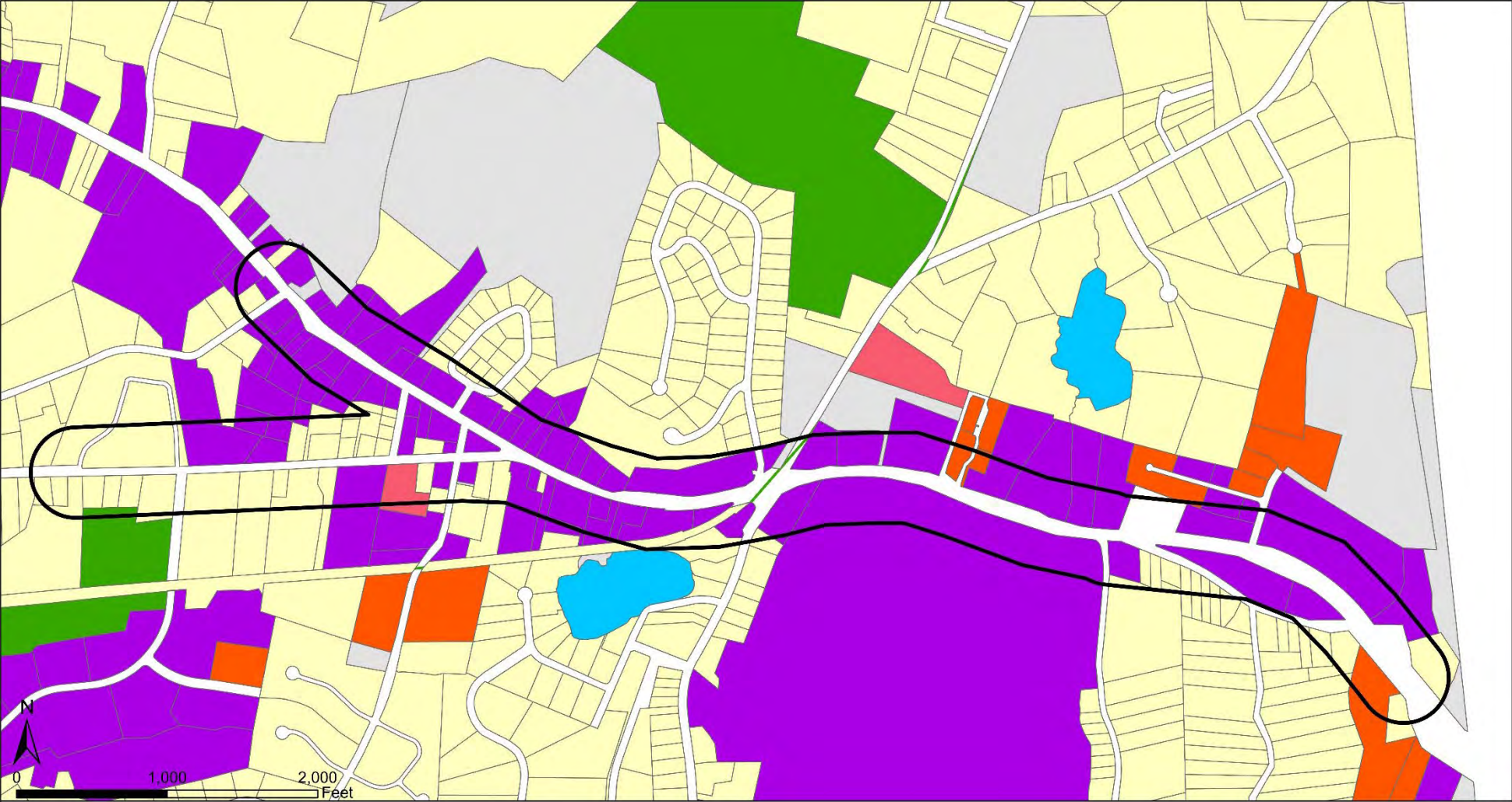


Land Use & Development

- Primarily commercial development
- New construction and former residential properties converted to commercial use
- Residential development mainly on side streets
- Additional development is expected on and near the study area in coming years
- Desire to keep new developments walkable, support more compact designs



Land Use Map



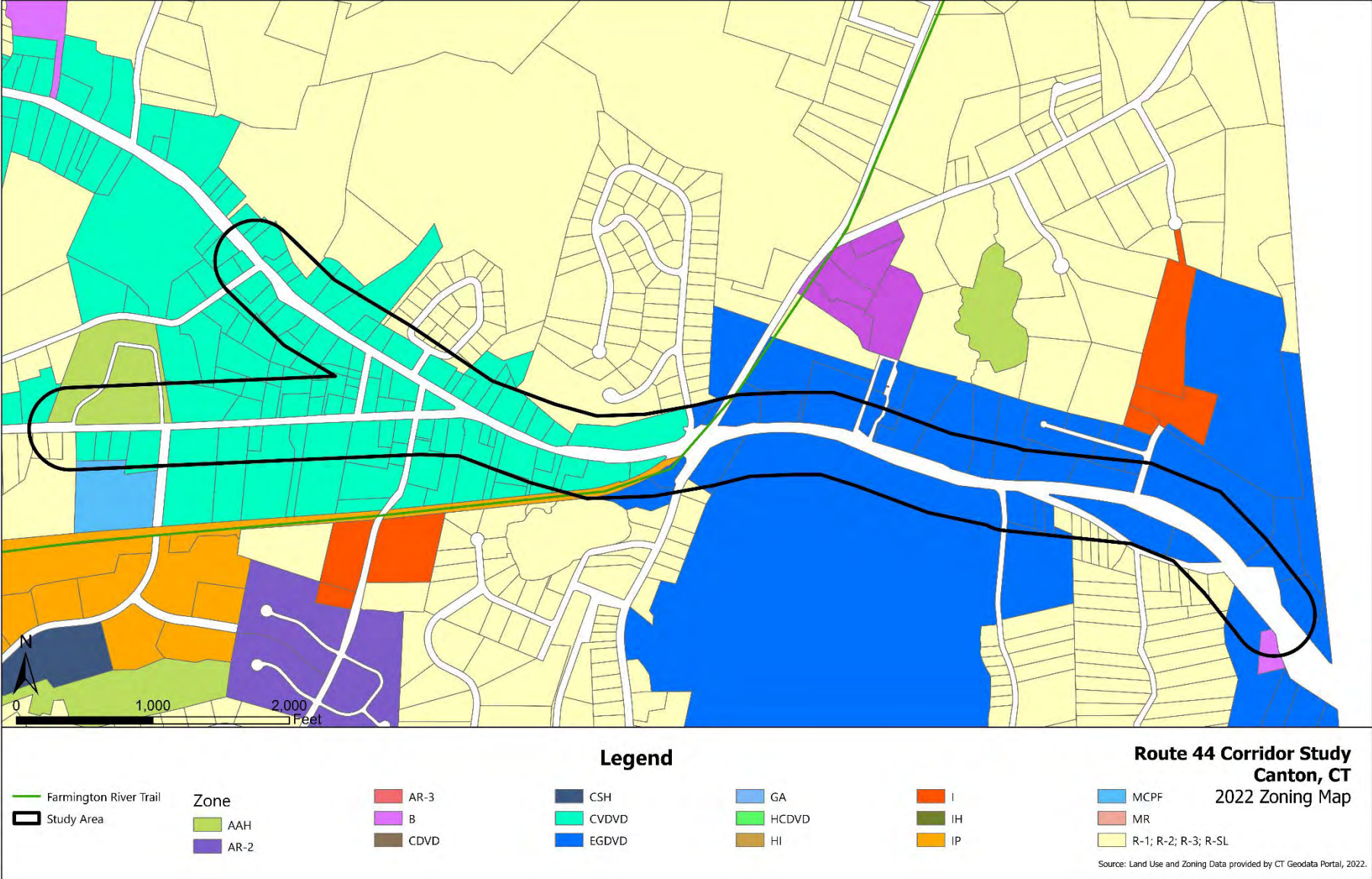
Legend

Farmington River Trail	Land Use	Industrial	Residential	Protected Open Space/ Recreational
Study Area	Commercial	Institutional	Vacant Land	Water Body
	Public Utility			

**Route 44 Corridor Study
Canton, CT
2022 Land Use**

Source: Land Use and Zoning Data provided by CT Geodata Portal, 2022

Zoning Map

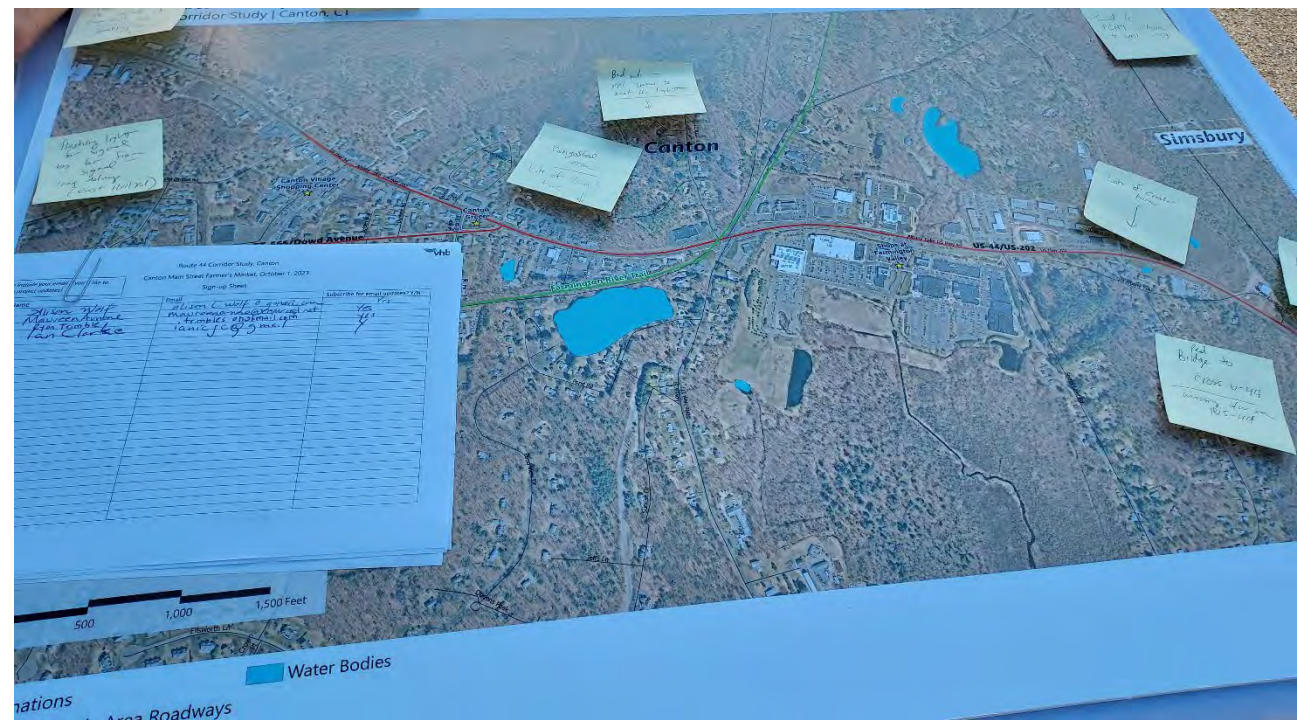


Public Outreach



Public Outreach

- Pop-up at Collinsville Farmer's Market, October 1
 - Promotion of project, map comments, public survey, visibility
 - Interacted with around 20-30 people
- Public Survey
 - Online survey promoted on websites, social media, flyers
 - 838 responses as of November 30
 - Open until December 15, 2023.
- Public Meeting
 - Today



Stakeholder Interviews

- **Shops at Farmington Valley**
- **Avon/Canton Chamber of Commerce**
- **Canton Village Shops**
- **Mitchell Subaru**
- **Bike Walk Canton**
- **Transit Users**
- **Favarh – The Arc of Farmington Valley**
- **Farmington Valley Trail Council**
- **ShopRite of Canton**
- **Canton Senior and Social Services**
- **Benidorm Bikes**

- **CRCOG visited 41 businesses along the corridor**



Stakeholder Interviews

Travel Modes:

- Personal automobile - 97% or more
- Private shuttle
- Dial a ride
- Bike or walk

Concerns with Corridor:

- Speeding
- Safety
- Signal coordination
- Access management
- Illumination
- Sidewalk connectivity
- Wayfinding
- Delays
- Connection to Farmington River Rail Trail
- Insufficient left turn accommodations
- Congestion increasing
- Safety for bicyclists and walkers
- Safe bike and pedestrian crossing
- Construction impacts on mobility /affects on businesses

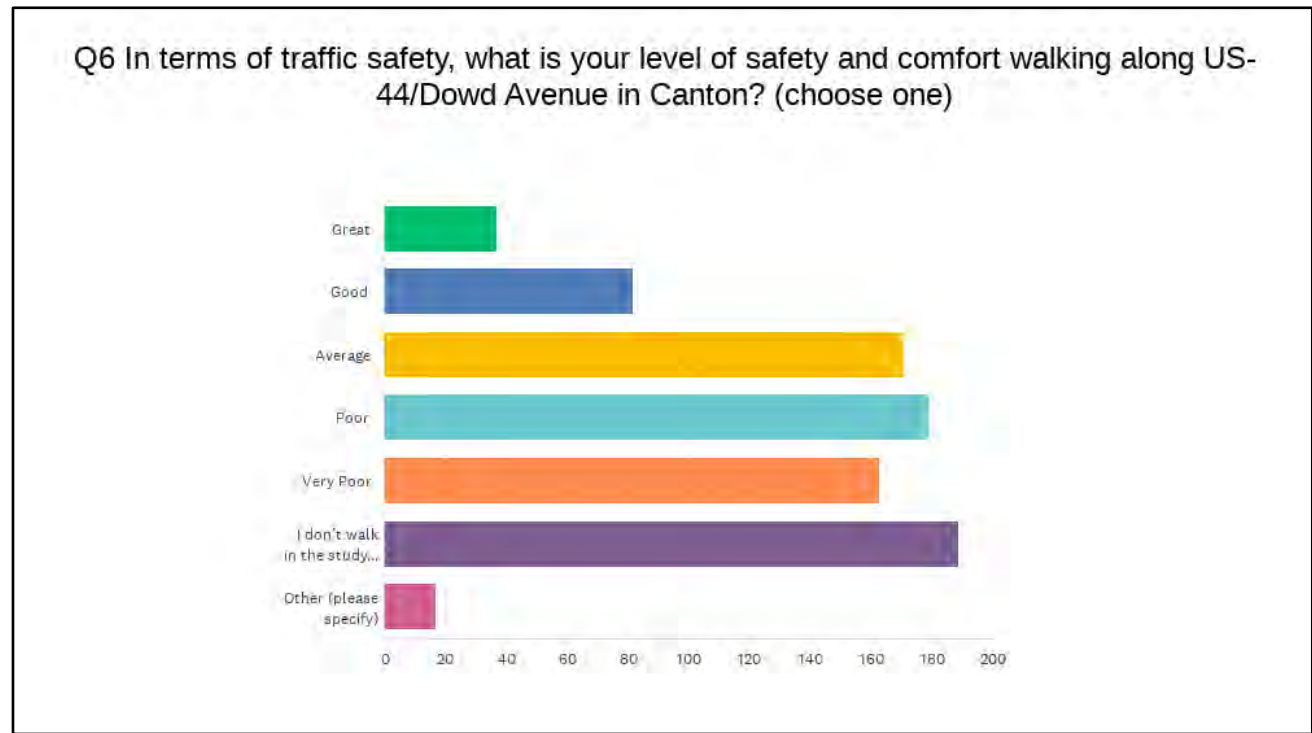


Survey Results

838 respondents to Date

Respondents' Town or City:

- Canton: 78%
- Avon: 7%
- Simsbury: 4%
- Other: 11%



- Level of safety and comfort walking and biking: 43% say poor or very poor for both questions
- Traffic concerns include high speeds, congestion, unsafe driver behavior, and long signal wait times
- Transportation & public space improvements – better bicycle and pedestrian facilities, safer drivers, and traffic calming
- Improvements for non-motorized users: extend trail, improve crossings, improve bike facilities, slow traffic, and improve pedestrian facilities

Q & A

- Until **7:00**
- Questions in order of sign-up sheet
- Come up to podium so online participants can also hear
- Online questions via chat – will be read out
- We will alternate between in-person and online questions
- Comments can be provided during map review after Q&A
- Comment forms are also available for written comments

CRCOG

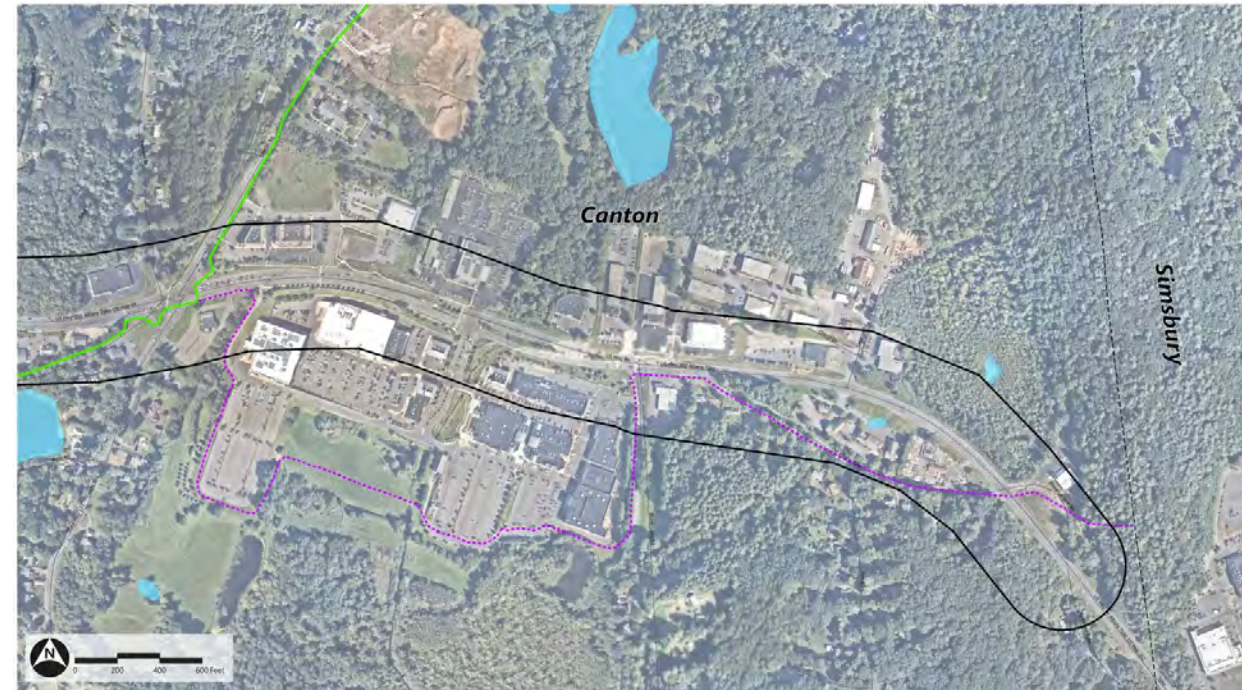


US-44 Corridor Study Public Meeting

Canton Community Center, 40 Dyer Ave, Canton CT

Map Review

- Make comments on maps using dots, sticky notes, pens
- Also can speak with Project Team member
- Online – will be facilitated, submit comments in chat



Capacity Analyses - Results

Table 2 Signalized Intersection Capacity Analysis Summary – Existing Conditions

Location	Movement	Morning Peak Hour					Midday Peak Hour					Evening Peak Hour				
		v/c ¹	Del ²	LOS ³	Q50 ⁴	Q95 ⁵	v/c	Del	LOS	Q50	Q95	v/c	Del	LOS	Q50	Q95
Route 44 at Canton Village	EB T/R	0.42	6	A	115	160	0.40	8	A	105	169	0.41	12	B	92	265
	WB L	0.10	2	A	3	6	0.28	3	A	11	m21	0.23	6	A	8	m41
	WB T	0.18	2	A	22	27	0.30	2	A	38	64	0.36	5	A	44	185
	NE L	0.20	40	D	13	33	0.42	35	D	33	66	0.45	39	D	48	81
	NE R	0.04	39	D	0	28	0.08	34	C	0	42	0.06	37	D	0	33
	Overall	0.41	7	A			0.42	8	A			0.39	11	B		
Route 44 at Dowd Ave	EB T/R	0.59	11	B	210	280	0.53	14	B	194	246	0.56	15	B	196	32
	WB L/T	0.37	1	A	0	1	0.64	2	A	1	2	0.69	4	A	1	3
	NE R	0.89	43	D	263	#376	0.77	27	C	198	266	0.67	27	C	179	280
	Overall	0.71	15	B			0.70	10	B			0.69	10	B		
Route 44 at Lovely St/Lawton Rd/Trailsend Dr	EB L	0.93	95	F	159	#328	0.84	94	F	129	#332	>1.20	>120	F	~241	#405
	EB T	0.83	39	D	431	562	0.90	59	E	434	#818	0.73	41	D	377	486
	EB R	0.06	0	A	0	0	0.04	0	A	0	0	0.04	0	A	0	0
	WB L	0.50	57	E	46	90	0.87	93	F	162	#402	0.77	72	E	151	226
	WB T	0.46	33	C	170	221	0.81	49	D	384	#711	0.93	52	D	586	#737
	WB R 2	0.02	0	A	0	0	0.07	0	A	0	0	0.07	0	A	0	0
	NB L	0.69	60	E	115	192	0.79	87	F	119	#262	1.04	>120	F	~196	#330
	NB T	0.41	51	D	77	136	0.37	64	E	61	138	0.47	59	E	92	147
	NB R	0.22	43	D	20	64	0.12	47	D	0	56	0.25	43	D	29	63
	SB L/T	0.68	60	E	104	167	1.07	>120	F	163	#433	0.77	69	E	169	#289
	SB R	0.65	56	E	86	126	0.81	83	F	105	#242	0.89	80	E	173	#273
	SE L	0.61	64	E	46	73	0.65	84	F	47	71	0.70	86	F	46	58
	Overall	0.85	45	D			0.82	64	E			1.01	68	E		
Route 44 at CVS Drive	EB L	0.05	3	A	1	15	0.22	6	A	3	32	0.18	7	A	2	22
	EB T	0.49	5	A	79	363	0.51	6	A	75	365	0.47	6	A	70	344
	WB T	0.31	7	A	30	319	0.58	9	A	121	#520	0.65	8	A	172	#652
	WB R	0.02	5	A	0	12	0.08	4	A	0	m16	0.09	3	A	1	m27

Capacity Analyses - Results

Location	Movement	Morning Peak Hour					Midday Peak Hour					Evening Peak Hour				
		v/c ¹	Del ²	LOS ³	Q50 ⁴	Q95 ⁵	v/c	Del	LOS	Q50	Q95	v/c	Del	LOS	Q50	Q95
	SB L	0.24	47	D	9	18	0.27	39	D	19	34	0.34	44	D	26	50
	Overall	0.47	6	A			0.51	9	A			0.58	9	A		
Route 44 at Shops at Farmington Valley/Private Driveway	EB L	0.50	54	D	6	m12	0.29	45	D	3	m9	0.29	60	E	3	m7
	EB T	0.58	19	B	332	490	0.68	25	C	251	263	0.57	15	B	246	105
	EB R	0.09	31	C	6	85	0.29	38	D	28	139	0.19	10	A	14	14
	WB L	0.45	49	D	29	62	0.74	53	D	111	156	0.65	57	E	82	127
	WB T/R	0.34	5	A	32	83	0.58	12	B	74	225	0.61	8	A	56	179
	NB L	0.48	46	D	34	51	0.80	52	D	118	#212	0.74	53	D	106	#191
	NB T	0.49	46	D	35	52	0.80	52	D	118	#212	0.75	53	D	107	#193
	NB R	0.04	37	D	0	3	0.51	27	C	53	103	0.34	31	C	34	80
	SB L	0.21	47	D	10	22	0.12	41	D	5	12	0.32	47	D	15	27
	SB T	0.11	46	D	5	17	0.14	41	D	5	13	0.10	46	D	5	13
	Overall	0.54	19	B			0.68	29	C			0.65	20	C		
Route 44 at Secret Lake Road/Acura of Avon	EB L	0.03	2	A	1	m1	0.06	8	A	2	m3	0.07	9	A	2	m5
	EB T	0.58	5	A	49	51	0.63	11	B	190	212	0.58	9	A	144	217
	WB L	0.09	7	A	2	12	0.10	8	A	4	12	0.13	7	A	6	16
	WB T	0.35	8	A	57	179	0.62	13	B	218	368	0.69	13	B	291	485
	NB T	0.03	43	D	0	0	0.05	38	D	0	0	0.05	43	D	0	0
	SB L	0.29	49	D	8	23	0.17	42	D	8	20	0.36	48	D	17	35
	SB R	0.01	47	D	0	0	0.02	41	D	0	0	0.02	46	D	0	0
	Overall	0.50	8	A			0.52	13	B			0.61	13	B		

Source: VHB, Inc. using Synchro 11 software

1 volume-to-capacity ratio

2 delay, in seconds

3 level of service

4 50th percentile queue length, in feet

5 95th percentile queue length, in feet

EB = Eastbound; WB = Westbound; NB = Northbound; SB = Southbound; R = right; T = through, L = left

95th% volume exceeds capacity, queue may be longer

~ Volume exceeds capacity, queue is theoretically infinite

m Volume for 95th percentile queue is metered by upstream signal



CRCOG



US-44 Corridor Study Public Meeting

Canton Community Center, 40 Dyer Ave, Canton CT

Thank you!

Project Contacts:

Pramod Pandey, CRCOG: ppandey@crcog.org or 860-724-4216

Joe Balskus, VHB: jbalskus@vhb.com or 860-807-4405

December 7, 2023

