

Update to the Capitol Region Council of Governments

Alex B. Johnson

President and CEO, Capital Workforce Partners

May 2024

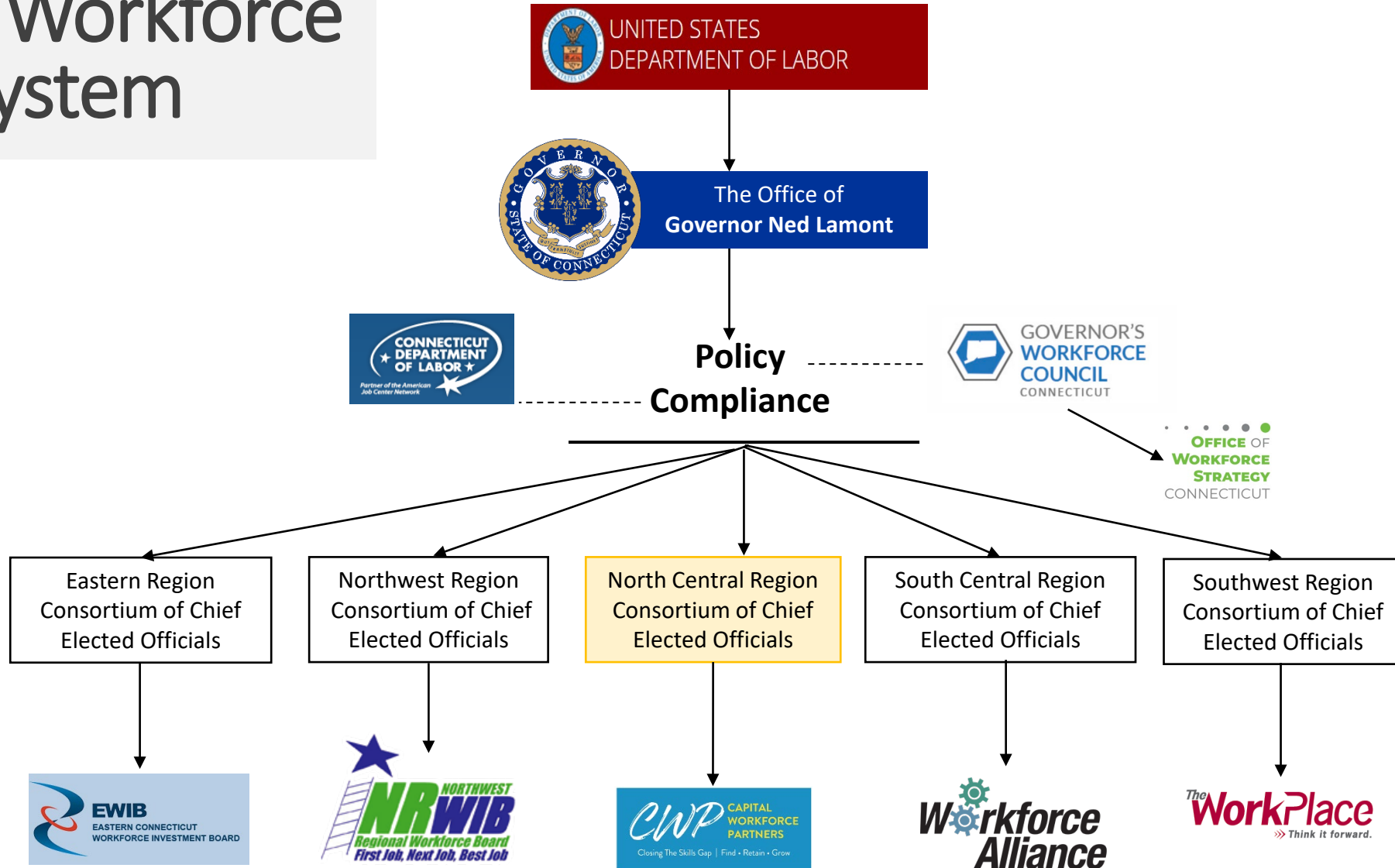
Vision of Capital Workforce Partners Organization that Drives Closing the Skills Gap



Who We Are: Closing the Skills Gap

- Regional Workforce Development Board for 37 municipalities in North Central CT
- Operates under the federal Workforce Innovation and Opportunity Act (WIOA) of 2015 to provide **Adult, Youth, and Dislocated Worker** services
- Facilitate 7 American Job Centers in the region
- In the last fiscal year, we reached over **12,000 people** and over **1,400 businesses**
- Convene Regional Sector Partnerships in the IT/Tech, Healthcare, Transportation Distribution & Logistics industries
- Governed in Partnership with the Consortium of Chief Elected Officials from the 37 municipalities

Public Workforce System

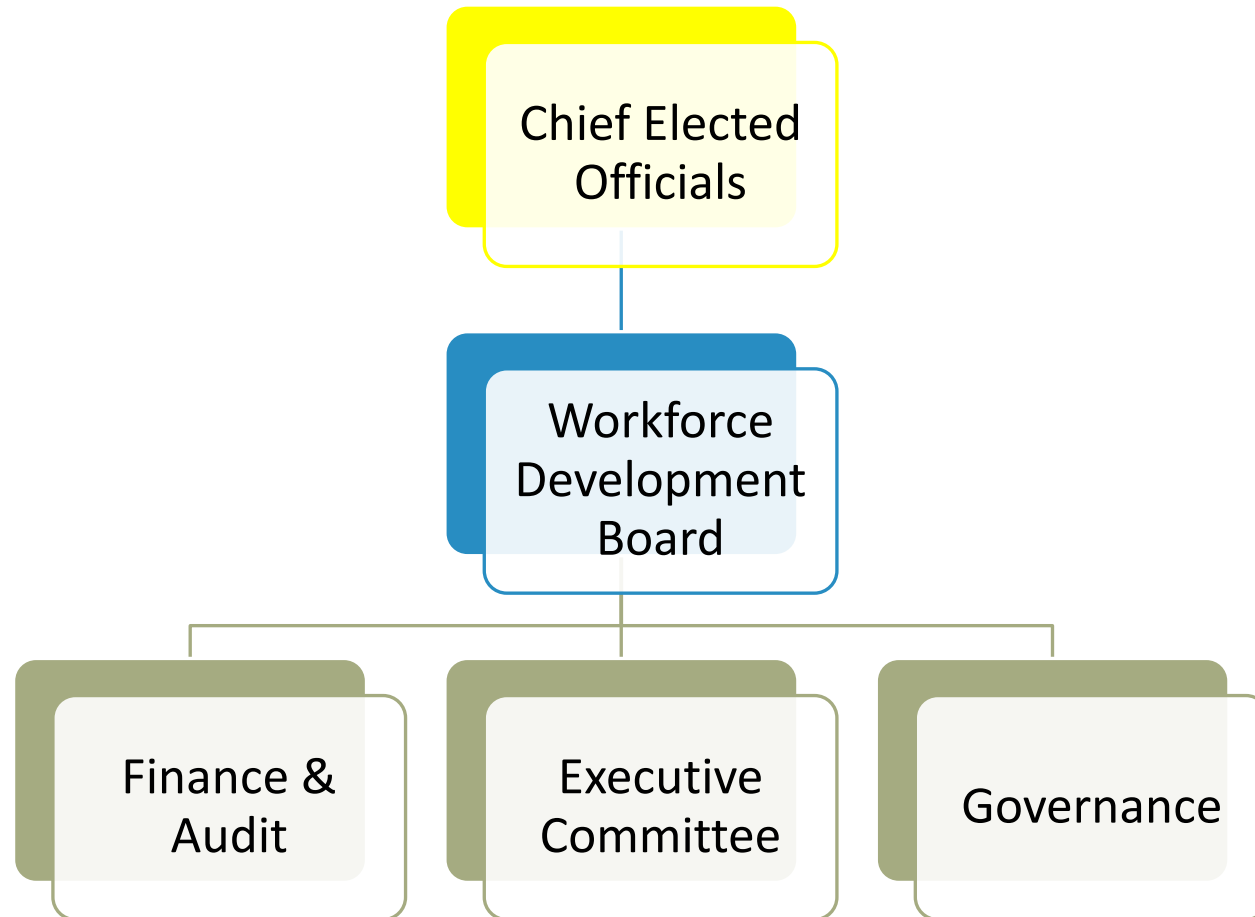


Role of Chief Elected Officials

In partnership with CWP:

- Appoint members to the C.W.P. Board
- Approve MOU's with One-Stop Partners
- Approve the local WIOA Plans
- Approve the selection of the One-Stop Operator
- Approve the C.W.P. Annual audit

Governance Structure



Capital Workforce Partners

Workforce Development Board Serving North Central Connecticut

Primary Activities

- **Administer American Job Center system, seven sites + call center**
 - Implement WIOA Adult, Youth, and Dislocated Worker programming as well as Jobs First Employment Services
- **Implement various workforce training initiatives**
 - Credential based training, sector-specific, population specific
- **Support businesses**
 - Provide counsel
 - Support recruitment and training
 - Convene Regional Sector Partnerships & Community Collaboratives

Priority Populations

- Returning Citizens
- Youth (In-school, Out-of-school, Justice-Involved, DCF-involved, Pregnant and Parenting, Homeless)
- Individuals with Disabilities
- Low Income
- Dislocated Workers
- Underrepresented and/or underserved populations

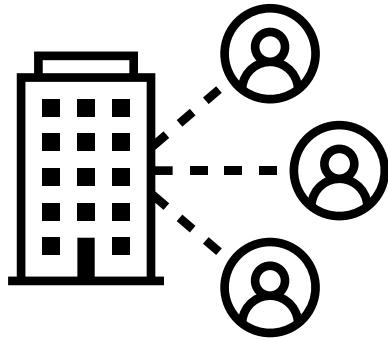
North Central Connecticut American Job Center System

There are seven physical American Job Center Locations in North Central CT:

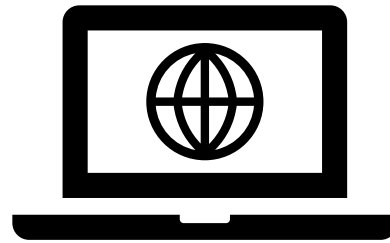
- ❖ Hartford
- ❖ Hartford @ Hartford Public Library
- ❖ New Britain
- ❖ Manchester
- ❖ East Hartford @ Goodwin University
- ❖ Enfield @ Asnuntuck Community College
- ❖ Bristol @ Tunxis Community College



Creating a 'No Wrong Door' system



7 Physical
American Job
Center Sites



CareerConneCT
Statewide Portal



AJC Call Center &
Virtual Live Chat

Local Workforce Opportunities

Industry Labor Force Demand in Connecticut remains strong

81,000 unfilled jobs

Regional Sector Partnerships are driving higher levels of business engagement & collaboration

1,000+ businesses engaged by CWP annually

Connecticut has invested significantly in its workforce and education system

8,000+ residents served through Career ConneCT/ Good Jobs training

Local Workforce Challenges

Populations disconnected from the labor force face numerous barriers to participation

72,000 unemployed

Untapped communities require intensive, population-specific supportive training and employment services

216,000 adults have less than a GED

Youth disconnection and risk of disconnection has been significantly exacerbated in recent years

119,000 youth at-risk or disconnected

Major Programs

- Workforce Innovation Opportunity Act
- Jobs First Employment Services
- H1-B USDOL
- Mortgage Crisis Training Program
- BEST Chance Partnership
- Multi-Gen Program
- Career ConneCT
- Good Jobs Challenge
- Adult Education Remedial Program
- Summer Youth Employment & Learning Program(s)
- WIOA Youth Program(s)

Serving the Highest Need Populations

Over 12,000 residents served last year, including:

- **2,030** Parents (including TANF)
- **1,693** SNAP recipients
- **832** Basic Skills Deficient individuals
- **917** Opportunity Youth
- **701** Justice Involved
- **1,028** Individuals with a disability
- **2,053** Older Workers
- **372** Veterans
- **96** Homeless Individuals
- **101** DCF-involved youth

Connecting Jobseekers with Employers

Sector strategies: through Regional Sector Partnerships, we convene businesses in high-growth industries to address workforce and other competitiveness needs.

- Capital Area Healthcare Partnership (CAHP)
- Capital Area Tech Partnership (CATP)
- Capital Area Transportation Distribution & Logistics Partnership
- Advanced Manufacturing Employer Partnership (AMEP)

Partnership Priorities include:

- Skills-Based Hiring
- Future Workforce Development
- Talent Retention
- Industry Promotion and Career Awareness
- Job Quality

Services for Local Businesses

Recruitment Assistance

Candidate Screening and Matching

Job Posting Services

OJT, Apprenticeships, and Work-Based Learning

Internship and Work Experience Programs

Incumbent Worker Training

Core Partnerships

Statewide Partners

- ❖ Governor's Workforce Council (**GWC**)
- ❖ CT Office of Workforce Strategy (**OWS**)
- ❖ CT Dept. of Labor (**DOL**),
- ❖ CT Dept. of Economic & Community Development (**DECD**),
- ❖ CT Department of Corrections (**DOC**),
- ❖ CT Dept. of Social Services (**DSS**),
- ❖ CT Dept. of Aging and Disability Services (**ADS**),
- ❖ CT State Dept. of Education (**CSDE**),
- ❖ CT State Colleges and Universities (**CSCU**),
- ❖ CT Business & Industry Association (**CBIA**),
- ❖ CT State Building Trades,
- ❖ CT Center for Advanced Technology (**CCAT**),
- ❖ AdvanceCT

Regional Partners

- ❖ Capitol Region Council of Governments (**CRCOG**)
- ❖ MetroHartford Alliance (**MHA**)
- ❖ Hartford Foundation for Public Giving (**HFPG**)
- ❖ Regional Sector Partnerships
- ❖ United Way
- ❖ Workforce Solutions Collaborative
- ❖ Goodwin University,
- ❖ Regional Adult Education providers,
- ❖ Hartford Opportunity Youth Collaborative,
- ❖ Work-Based Learning Network,
- ❖ Community-based Organizations



Are you interested in a career in Manufacturing?

Career ConneCT will get you the skills you need in as little as 7 weeks, and then match you with an employer ready to hire you!

About Training:

- **Introduction to Machine Technology**
 - Topics covered: Manufacturing shop math; Blueprint reading including GD&T; Common measuring tools; Workplace safety; Manual machine operation; Basic layout functions; Basic milling and lathe operations; Introduction to CNC Machining
 - Training will be **in-person**
 - First training session begins 1/22/24, **more dates to come!**
- Tuition fully covered
- An in-person assessment will be required closer to program start date
- Weekly stipends and other supportive services are available



Interested?
Scan above to speak directly
with a Career Advisor!

BROUGHT TO YOU BY THE OFFICE OF WORKFORCE STRATEGY IN COLLABORATION WITH THE OFFICE OF THE GOVERNOR AND THE GENERAL ASSEMBLY. This project is being supported, in whole or in part, by federal award number SLFRP0128 awarded to the State of Connecticut by the U.S. Department of the Treasury and the CT Office of Workforce Strategy. Capital Workforce Partners and the Connecticut Department of Labor are partners with the American Job Center Network in North Central CT.





Interested in a career in Healthcare?

Attend a **virtual** recruitment session to learn more about the training opportunities available to you at **no cost!**

About Training:

- Variety of Healthcare trainings available:
 - Certified Nursing Assistant (CNA)
 - Medical Assistant
 - Medical Billing and Coding
 - Sterile Processing
 - Emergency Medical Technician (EMT)
 - Medical Administrative Assistant
 - Pharmacy Technician
- Tuition fully covered
- Rental Assistance and other supportive services are available

SCAN ME



Scan the QR code or visit <https://rb.gy/qbqt0> to sign up for upcoming sessions!

BROUGHT TO YOU BY THE OFFICE OF WORKFORCE STRATEGY IN COLLABORATION WITH THE OFFICE OF THE GOVERNOR AND THE GENERAL ASSEMBLY. This project is being supported, in whole or in part, by federal award number SLFRP0128 awarded to the State of Connecticut by the U.S. Department of the Treasury and the CT Office of Workforce Strategy. Capital Workforce Partners and the Connecticut Department of Labor are partners with the American Job Center Network in North Central CT.





Interested in a well-paying, stable career in the Commercial Trucking Industry?

Career ConneCT will get you the skills you need in as little as 12 weeks, and then match you with an employer ready to hire you!

About Training:

- In-person training with flexible start date
- Tuition fully covered
 - Weekly stipends are available
- Multiple CDL training providers available
- No prior training or background in Commercial Trucking necessary for enrollment

SCAN ME



Scan the QR code or visit <https://portal.ct.gov/careerconnect/> to get started on the road to success!

BROUGHT TO YOU BY THE OFFICE OF WORKFORCE STRATEGY IN COLLABORATION WITH THE OFFICE OF THE GOVERNOR AND THE GENERAL ASSEMBLY. This project is being supported, in whole or in part, by federal award number SLFRP0128 awarded to the State of Connecticut by the U.S. Department of the Treasury and the CT Office of Workforce Strategy. Capital Workforce Partners and the Connecticut Department of Labor are partners with the American Job Center Network in North Central CT.



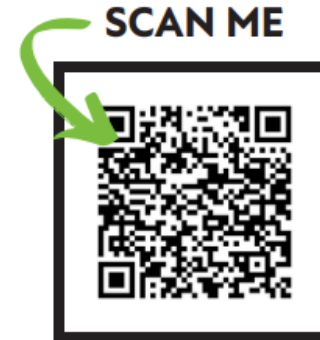


Interested in a career in Information Technology (IT)?

Career ConneCT will get you the skills you need in as little as 16 weeks, and then match you with an employer ready to hire you!

About Training:

- Four IT career pathways available:
 - IT Support
 - Web Developer
 - Information Security
 - Network/Cloud Maintenance
- All IT courses will be **online** through Connecticut State Colleges and Universities (CSCU)
- Tuition fully covered
- Supportive services include:
 - Laptops
 - Stipends: \$100 a week while in training
 - Transportation assistance
 - Rental assistance
- An **in-person bootcamp** may be required



Scan the QR code or visit <https://portal.ct.gov/careerconnect/> to get started!

BROUGHT TO YOU BY THE OFFICE OF WORKFORCE STRATEGY IN COLLABORATION WITH THE OFFICE OF THE GOVERNOR AND THE GENERAL ASSEMBLY. This project is being supported, in whole or in part, by federal award number SLFRP0128 awarded to the State of Connecticut by the U.S. Department of the Treasury and the CT Office of Workforce Strategy. Capital Workforce Partners and the Connecticut Department of Labor are partners with the American Job Center Network in North Central CT.



Critical Workforce Issues

- **Expanding Contextualized Sector Based Training (Adult Education)**
- **Manufacturing Training Opportunities**
 - Electric Boat
 - TTM Technologies
- **Priority Populations**
 - Opportunity Youth
 - Returning Citizens
 - Undocumented Immigrants
- **WIOA Authorization**
 - **Youth Priority**
 - **WIOA System:** Workforce Development Board Infrastructure

ANNUAL MEETING

Join us on June 21st for the CWP Annual Meeting!

Capital Workforce Partner's Annual Meeting is on Friday, June 21st from 7:30 a.m. to 10:00 a.m.

On this occasion, we will look back on an amazing year, celebrate our incredible accomplishments, and recommit ourselves to supporting our region's employers' workforce needs while continuing to help individuals across North Central Connecticut pursue meaningful careers.

The Annual Meeting will include an exciting keynote speaker as well as an awards presentation honoring those that went the extra mile in furtherance of CWP's mission.



YOU'RE INVITED!

CWP CAPITAL WORKFORCE PARTNERS
Closing The Skills Gap | Find · Retain · Grow

Capital Workforce Partners 2024 Annual Meeting

This is one of CWP's major signature events and we hope that you can join us. On this occasion, we will look back on an amazing year, celebrate our incredible accomplishments, and recommit ourselves to supporting our region's employers' workforce needs while continuing to help individuals across North Central Connecticut pursue meaningful careers. The Annual Meeting will include an exciting keynote speaker as well as an awards presentation honoring those that went the extra mile in furtherance of our mission.

YOU have been integral to our success and this gathering would not be the same without you.

To register, for more information regarding sponsorship opportunities, or any questions or concerns, please contact John Hampton, CWP's Communications Manager, at 860-803-4072 or at jhampton@capitalworkforce.org.

Friday, June 21, 2024
7:30 AM – 10:00 AM
Marriott Hartford Downtown
200 Columbus Boulevard, Hartford

www.capitalworkforce.org

REGISTER TODAY!



Contact Us

Capital Workforce Partners, through the American Job Center (AJC), continues to serve clients virtually, by phone and in person.

Call Center: Please call 860-406-3374

Press 3 to set up an appointment.

Visit our website or scan QR code to connect to us on Facebook

<https://capitalworkforce.org/american-job-centers/>

