



4 Bloomfield

Community Overview

The Town of Bloomfield encompasses 26.4 square miles with an average elevation of about 150 feet. The 2020 Census reported Bloomfield’s population at 21,535. Bloomfield is primarily within the Park River Watershed. Portions of the Town at the northwest and eastern edges also drain to the Farmington River and directly to the Connecticut River via local brooks. Main water-courses within the Town include Wash, Tumbledown, Beaman, Griffin, and Mill Brooks. Four major flood control reservoirs owned by CT DEEP, and jointly maintained by DEEP and the Town, are located in Bloomfield within the Park River watershed. Large portions of an MDC reservoir and Penwood and Talcott Mountain State Parks are also located in the Town. Major transportation routes through Town include east-west state Routes 218 and 178, as well as north-south running routes 185, 187 and 189.

Bloomfield industries include insurance, aerospace products, specialized tools, electronics, gold and diamond products, diversified industries and agriculture. Bloomfield is reportedly the 14th busiest municipality in the state for construction. Bloomfield has experienced growth in apartment development, particularly in the downtown area around Jolley Drive, over the past 5 years, and the town continues to receive applications for new developments. Additionally, there has been some industrial development, including a warehouse project currently on hold but expected to proceed. However, there has been relatively limited commercial and single-family development. It’s worth noting that these developments are situated near, but not within, floodplains.

Development/redevelopment is not increasing risk to natural hazards.

Critical Facilities

In Bloomfield, critical facilities include the Carmen Arace School (primary shelter), the Blue Hills Fire Department (backup shelter), Police Department, Public Works Facility, Bloomfield Ambulance (EOC), Town Hall, and another Fire Department

Table 4-1: Critical Facilities, Bloomfield

Facility	Shelter	Cooling Center	Generator
Carmen Arace School	Primary		X
Blue Hills Fire Department	Backup		X
Police Department			Needs replacing
Public Works Facility			X
Bloomfield Ambulance (EOC)			X
Town Hall			
Fire Department			
Senior Center		X	
3 Eversource Substations			

During extreme heat events, Bloomfield Senior Center is used as the cooling center. This facility can also be used as a heating center. The senior center does not have a generator.

Carmen Arace Middle School is Bloomfield’s emergency shelter. This facility can be used as an overnight shelter, if needed.

Capabilities

Bloomfield’s hazard mitigation capabilities include its primary and backup shelter, large state-owned flood control structures, property acquisition program, and zoning regulations. Hazard mitigation is incorporated into the community’s Plan of Conservation and Development (POCD). POCD actions specifically address natural hazards.

The Connecticut Department of Energy and Environmental Protection (DEEP) owns and manages most of large flood control structures within Bloomfield’s borders. The Town does provide limited maintenance to flood control structures.

The Town has taken steps to reduce its vulnerability to flooding. Since 2008, there have been three demolitions of structures located totally or partially in the floodplains. The Old Masonic Hall at 3 Tunxis Avenue, a residential outbuilding at 60 Tunxis Avenue and the warming shed on Filley Park. The Town also adopted new zoning regulations which included a major overhaul and updating of the Floodplain section in 2009. That overhaul was in response to directives from FEMA to strengthen the regulations to continue the community’s participation in the Flood Insurance Program.

Bloomfield coordinates with Eversource to maintain power lines and minimize outages. This coordination has been effective and productive, and fewer outages have occurred in recent years.

Since adoption of the 2014-2019 Capitol Region Natural Hazards Mitigation Plan Update (“2014 HMP”), a number of changes to Bloomfield’s hazard mitigation capabilities have occurred; examples include:

- A small FEMA map revision was completed near West Hartford and the Park River.
- The drainage culverts on Applewood Road were replaced to address structural issues that prevented proper function. Street flooding was occurring in this area.
- Stormwater system repairs and upgrades were completed on Ryefield Hollow.
- East Newberry Road drainage improvements were made to prevent some flood damage to private property.

Since the 2019 HMP, the following actions have been incorporated as capabilities:

- Increase budget for tree maintenance and urban forestry.
- Assess vulnerable population disaster preparedness and emergency assistance protocol to identify opportunities for improvement.
- Conduct annual outreach campaign to educate residents on signing up for emergency alerts, building and maintaining disaster plans and kits, and improving their disaster readiness.

Capabilities to address natural hazards and the losses that they have caused, have increased since the last plan has been adopted.

Challenges

Challenges Overview

The town of Bloomfield has observed a rise in precipitation levels, leading to drainage-related flooding issues within the community. Town staff anticipates being able to pinpoint problem areas, as indicated in the action table. However, there is uncertainty regarding the availability of funding to address these identified issues once they are recognized. Furthermore, it is noteworthy that some of these drainage problems are concentrated in denser areas characterized by older housing, constructed before the implementation of many contemporary land use regulations.

Another challenge to the Town is maintaining vehicle access through the town during and after disasters. Route 185 is a major east-west route over the ridge in western Bloomfield and the Farmington River in neighboring Simsbury. When Route 185 is closed due to debris or ice and snow, significant traffic volumes must be re-routed in Bloomfield.

The town-owned golf course, Wintonbury Hills, depends on a reservoir for irrigation. When the reservoir gets low, the town is unable to pump for irrigation supply. Going forward this may be a more frequent concern.

Bloomfield notes that there is some agriculture in town. Farmers have reported that this year has been particularly tough because of how much rain has occurred. Town staff report that climate change is affecting agriculture.

Hazard Losses

The economic losses faced by the community from natural hazards can be estimated by reviewing historic loss figures. Loss estimates are summarized below.

Average Annualized Losses

Average Annualized Loss (AAL) estimates are summarized below. Average Annualized Loss (AAL) figures are useful tools for comparison of the risks faced from different hazards with different likelihoods of occurring in a given time period. AAL estimates were prepared for each natural hazard which may impact Bloomfield. National Centers for Environmental Information (NCEI) data, from the last 20 years, was categorized by hazard and averaged based on the proportion of population within each town in the CROCG Region. National Flood Insurance Program (NFIP) losses were calculated based on the 50 year span of the program. FEMA Public Assistance (PA) data from the past 11 years was categorized based on hazard and used to compute AAL. United States Department of Agriculture (USDA) from the past 10 years was calculated to get AAL. Expected Annual Loss data from the National Risk Index (NRI) was downloaded and categorized to get AAL for the below hazards. Dam failure data was taken from the 2019-2024 CROCG Hazard Mitigation Plan (HMP) plan since no new dam failures have occurred in the past five years. The 2019 HMP Dam failures were sourced from the 2014 Connecticut Natural Hazard Mitigation Plan Update, with dam failure data supplemented by the National Performance of Dams Program and the Connecticut Department of Energy & Environmental Protection

Table 4-2: Average Annualized Losses, Bloomfield

Hazard	Source	Average Annualized Losses (AAL)
Hurricanes/Tropical storms	NCEI	\$55,341.26
	NRI	\$855,024.64
	FEMA PA	\$0.00
Tornados/High Winds	NCEI	\$20,718.75
	NRI	\$227,239.93

Hazard	Source	Average Annualized Losses (AAL)
Winter Storms	NCEI	\$16,412.96
	NRI	\$12,772.50
	FEMA PA	\$7,729.89
Flood	NCEI	\$16,774.72
	NRI	\$26,381.78
	NFIP	\$7,154.49
Drought	NRI	\$82,342.19
	USDA	\$0.00
Extreme Heat	NRI	\$24,621.16
Wildfire	NRI	\$589.50
Earthquakes	NRI	\$70,545.57
Dam Failure	HMP	\$37.00

Other Hazard Costs

The Town estimates that responding to a single severe winter storm event costs the Town \$65,000, and responding to a single severe thunderstorm costs \$25,000.

Losses Summary

A review of the above loss estimates demonstrates that the Town of Bloomfield has experienced significant expenses as a result of natural hazards and is at risk for additional losses if some of the less-frequent events were to occur. These actual and potential losses justify hazard mitigation actions to reduce losses in the future.

Mitigation Strategies and Actions

This HMCAP includes new goal statements that are aligned with *Resilient Connecticut* and the efforts of the GC3. The five new goals developed for this HMCAP were developed with cooperation from CIRCA in the *Resilient Connecticut* planning process, and are:

- Ensure that critical facilities are resilient, with special attention to shelters and cooling centers.
- Address risks associated with extreme heat events, especially as they interact with other hazards.
- Reduce flood and erosion risks by reducing vulnerabilities and consequences, even as climate change increases frequency and severity of floods.
- Reduce losses from other hazards.
- Invest in resilient corridors to ensure that people and services are accessible during floods and that development along corridors is resilient over the long term.

The previous goals of the 2019 HMP have been replaced and incorporated into these five new goals in accordance with the explanation in the Multijurisdictional document.

Noted Hazard Mitigation Needs

Over the course of Plan development, multiple hazard mitigation needs were noted:

- The town of Bloomfield needs to continue to address increased precipitation-related drainage issues and secure funding for identifying and rectifying problem areas, especially in older housing-dense zones.
- The town should consider strategies for managing water supply in light of more frequent low reservoir levels in order to sustain irrigation at Wintonbury Hills golf course
- Bloomfield should support local agriculture by addressing challenges such as excessive rain, increased erosion and emphasize the need for climate-resilient agricultural practices.

Status of Previous Mitigation Strategies and Actions

The Town of Bloomfield reviewed the mitigation actions proposed in the 2019 HMP and determined the status of each. That information is included in the table below.

Table 4-3: Status of Previous Mitigation Strategies and Actions, Bloomfield

No.	Action	Notes	Status
18	Perform a town-wide drainage study to identify and prioritize stormwater drainage system improvement and replacement needs.	The town has an outdated drainage study from 1977. Public Works floated a proposal during the last fiscal year to update this study, but the town council did not have adequate funds to support it. Carry forward.	Carry forward.

No.	Action	Notes	Status
3	Review maps of flood risk associated with failure of the Hartford Flood Control System and determine needs for additional education or action.	<p>The needs in this area include ongoing maintenance (for example, mowing) and renewing appropriate leases. The town does not have maintenance responsibility for the flood control structures and outlet structures. The public often uses these areas as open space providing passive recreation opportunities, so the town would like to maintain these areas as viable usable open space for residents. The town has tried to get changes made to the long-term leases during the renewal process but has encountered delays with DEEP and the Attorney General’s office and the other bureaucratic steps of this process. So updating the leases to include changes to maintenance and changes in use has been a challenge. The initial leases reinforced the idea that these areas should be mowed annually; the town would like to change this. Town staff suggest revising action to be “continue coordination with the state of Connecticut regarding updating the leasing and maintenance of these properties.” The town staff reports that the state may not be providing enough resources to maintain these areas adequately.</p> <p>CIRCA’s recommendation appeared to have general concurrence: Develop one action related to risk communication (consistent with the three actions from 2019), one new action related to leasing, and one new action related to maintenance.</p>	Carry forward with revisions
1	Provide information about the risks of living near the Flood Control System to individuals considering purchasing property in that area.	See above.	Carry forward with revisions – see above
11	Conduct public outreach and education campaign to residents living near the Flood Control System about the risks of living in that area.	See above.	Carry forward with revisions – see above

No.	Action	Notes	Status
5	Conduct public outreach and a cost-benefit analysis to determine a preferred flood mitigation measure (from those determined through previous studies) to implement at the library.	<p>Regarding the library: A referendum approval in Nov 2021 authorized funding for a new library and the Building Committee moved ahead. The project was put out to bid and the bids came in a few weeks ago at about \$10 million over the previous cost estimate. There is an upcoming meeting in August 2023 which may provide more direction for how the town will move forward.</p> <p>Regarding the sources of flooding: there have been improvements made to Filley Pond north of the library, and this has reportedly helped to mitigate some of the flooding potential downstream in front of the library, which was one of the major flooding concerns. This work included removing a dam, installing a fishway, dredging Filley Pond, and putting rip-rap and supporting material around the edge of the pond.</p>	Retire
21	Develop an ordinance related to maintenance of and removal of debris from stream channels on private property. The ordinance should consider the importance of large woody debris in streams to the health of the river habitat.	The town staff is not aware of any ordinance related to this. Town staff report that debris is not a big challenge, and they will work with property owners on this as needed. Refer to the next action (below) for more about interacting with the public about flooding.	No longer a need/Retire action
16	Complete a public campaign to educate property owners about the importance of maintaining and clearing debris from stream channels. The campaign should result in permanently available educational materials, such as through links on the Town website. The campaign should consider the importance of large woody debris in streams to the health of the river habitat.	There is a lot of concern related to flooding in town, and so any information that can be pushed out to property owners would be helpful. Some property owners are reporting flooding on their properties/basements that has increased in recent years. Nevertheless, a public education program has not been developed regarding debris removal, or regarding flooding in general.	Carry forward with revisions to indicate role of the Department of Communication in communicating flood risks townwide
10	Develop a simple guide for property owners laying out whether or not they should remove debris from their streams, and providing contacts for contractors that can assist them.	As suggested above, nothing has been done on this. There is now a department of communication in the town, so there is renewed likelihood that this could be done. Revise to indicate department of communication's role.	Carry forward with revisions to indicate role of the Department of Communication

No.	Action	Notes	Status
13	Identify funding sources and personnel to complete an urban tree canopy inventory and study.	The town has funded a consultant to do a study in the rights-of-way. This will be done by the time this plan is adopted.	Complete / Retire
19	Increase budget for tree maintenance and urban forestry.	There was a nominal increase. The conservation and energy committee along with the Bloomfield Beautification Committee has a tree planting program that has planted approximately 100 trees in areas with little tree canopy. This is a capability.	Capability / Retire
23	Identify site for debris storage. Purchase a bucket truck for tree trimming and maintenance.	One of the state flood control areas was utilized for debris storage in 2011. In more recent years there have been a few additional areas considered for storage. The town does have many options of open space, even though they are not explicitly listed in the plan. The intent has been met on this action.	Intent has been met / Retire
4	Assess vulnerable population disaster preparedness and emergency assistance protocol to identify opportunities for improvement.	The town has a designated emergency shelter in one of the middle schools with cots, food service, and generator. The senior center is also very active and has many connections to the senior residents in the town. The senior center (330 Park Avenue) is used as heating/cooling center as well. The senior center does not have a generator – add an action for this.	Capability / Retire
6	Replace Police Department emergency generator.	Complete.	Complete / Retire
7	Upgrade or supplement Public Works emergency generator to expand its backup power capacity.	In 2020 there was a Public Works facility renovation, including a new larger-capacity generator.	Complete / Retire
8	Improve/replace existing Town communication system in favor of one that is more reliable and has better coverage during storm events. Implement 2020-2021.	This is complete; the town is reportedly now participating in the state's communication system.	Complete / Retire
17	Conduct annual outreach campaign to educate residents on signing up for emergency alerts, building and maintaining disaster plans and kits, and improving their disaster readiness.	The town has an outreach campaign related to encouraging residents to sign up for CodeRed system, plus the CRCOG Everbridge system. Both of these notification systems are in place, so this is a capability.	Capability / Retire
12	Coordinate with NEMO and CRCOG to share resources and gain technical support for hazard mitigation actions involving stormwater management and public outreach, which have parallel benefits related to MS4 stormwater permit compliance.	The town is compliant with MS4. The town does not make much use of outside resources. The town staff would like to carry this forward.	Carry forward with revision to update available resources.

No.	Action	Notes	Status
15	Work with MDC to identify potential hazard mitigation actions for MDC facilities, and list those actions in the next HMP Update.	CIRCA will list MDC facilities in the Bloomfield annex in this HMP update. Whenever there is an extreme weather event predicted, Bloomfield participates in the MDC preparation meetings. Bloomfield also participates in their training exercises.	Complete with this plan / Retire
20	Contact the owners of Repetitive Loss Properties and nearby properties at risk to inquire about mitigation undertaken and suggest options for mitigating flooding in those areas. This should be accomplished with a letter directly mailed to each property owner.	This needs to be carried forward for FEMA requirements. Town staff note that it is an arduous process to get FEMA funds, and it can take years to get funds back for emergency activities.	Carry forward
9	Conduct outreach to local small businesses with the aim of preventing the accidental release and pollution from chemicals stored and used at their facilities during or following natural hazard events.	Town staff are not aware of anything that's been done on this. The related DEEP program has ended. Replace this action with having town staff watch the DEEP webinar.	Carry forward with revisions to watch the DEEP training webinar
14	Participate in EMI courses or the seminars and annual conference held by the Connecticut Association of Flood Managers.	The town has various operations plans that get activated depending on circumstance. Town staff say to keep this action, especially given that there will be more staff turnover in the future.	Carry forward
22	Coordinate with CT SHPO to conduct historic resource surveys, focusing on areas within natural hazard risk zones (such as flood or wildfire hazard zones and areas near steep slopes), to support identification of vulnerable historic properties and preparation of resiliency plans across the state. This action leverages existing resources and best practices for protection of historic and cultural resources through an ongoing statewide initiative by CT SHPO.	Nothing has yet been done related to this. There is a push to have a Historic Commission, so the town staff would like to keep this action.	Carry forward
2	Enter the Sustainable CT program through Registration and review actions that can be undertaken to pursue Certification. Make progress with the actions related to hazard mitigation.	The town joined and were certified in 2019, and then the certification lapsed last year. The town is working to restore the certification, so would like to keep this action.	Carry forward (perhaps with revisions to reflect the recent history).

Active Mitigation Strategies and Actions

The Town proposed to initiate several new mitigation actions for the upcoming five years. Additionally, a number of actions from the previous planning period are being carried forward or replaced with revised actions. These are listed below.

Each of the following actions has been prioritized based on FEMA guidelines, listed from highest to lowest priority, and numbered.

Table 4-4: Active Mitigation Strategies and Actions, Bloomfield

Number	Hazard Mitigation and Climate Adaptation Actions	Hazard Mitigation and Climate Adaptation Goal	Type of Action	Responsible Department	Approx. Cost Range	Potential Funding Sources	Timeframe	Priority	Hazard(s)	EJ?	PERISTS Score	STAPLEE Score	PERSISTS x STAPLEE =
BF1	Acquire a generator for the senior center.	Ensure that critical facilities are resilient, with special attention to shelters and cooling centers.	Preparedness & Emergency Response	Emergency Management	\$100,000 - \$500,000	FEMA HMA; STEAP	07/2024 - 06/2025	High	All Hazards	No	19	5	95
BF2	Ensure that transportation and transit options are available to bring people to cooling centers.	Address risks associated with extreme heat events, especially as they interact with other hazards.	Preparedness & Emergency Response	Emergency Management	\$10,000 - \$50,000	Transit; IJJA BBFP	07/2024 - 06/2026	High	Extreme Heat	No	19	3	57
BF3	Conduct a town wide assessment of stream crossings to identify vulnerabilities and develop a priority list for maintenance and upsizing.	Reduce flood and erosion risks by reducing vulnerabilities and consequences, even as climate change increases frequency and severity of floods.	Structural Project	Public Works	\$10,000 - \$50,000	DCRF; Municipal CIP Budget	07/2024 - 06/2026	Medium	Riverine and Pluvial Floods	No	18	6	108
BF4	Perform a town-wide drainage study to identify and prioritize stormwater drainage system improvement and replacement needs.	Reduce flood and erosion risks by reducing vulnerabilities and consequences, even as climate change increases frequency and severity of floods.	Structural Project	Public Works	\$10,000 - \$50,000	DCRF; Municipal CIP Budget	07/2025 - 06/2027	High	Riverine and Pluvial Floods	No	19	6	114
BF5	Continue coordination with the state of Connecticut regarding updating the leasing and maintenance of these properties.	Reduce losses from other hazards.	Property Protection	Building & Land Use	\$0-\$10,000	Municipal Operating Budget	07/2026 - 06/2027	Medium	Riverine and Pluvial Floods	No	18	10	180

Number	Hazard Mitigation and Climate Adaptation Actions	Hazard Mitigation and Climate Adaptation Goal	Type of Action	Responsible Department	Approx. Cost Range	Potential Funding Sources	Timeframe	Priority	Hazard(s)	EJ?	PERISTS Score	STAPLEE Score	PERISTS x STAPLEE =
BF6	Implement a new public outreach strategy for residents in Bloomfield related to the purpose of the Flood Control System and their use of the resource.	Reduce flood and erosion risks by reducing vulnerabilities and consequences, even as climate change increases frequency and severity of floods.	Education and Awareness	Planning	\$0-\$10,000	Municipal Operating Budget	01/2026 - 12/2026	High	Riverine and Pluvial Floods	No	18	8	144
BF7	Work with the Connecticut Institute for Resilience and Climate Adaptation (CIRCA) to develop an appropriate scope of work to address flooding and extreme heat concerns in Resilient Opportunity Areas (ROARs).	More than one goal.	More than one type	Public Works	\$0-\$10,000	CIRCA	07/2024 - 06/2027	Medium	Riverine and Pluvial Floods/ Extreme Heat	No	18	5	90
BF8	Complete a public campaign to educate property owners about the importance of maintaining and clearing debris from stream channels. The campaign should result in permanently available educational materials, such as through links on the Town website. The campaign should consider the importance of large woody debris in streams to the health of the river habitat and should be completed by the towns Department of Communications.	Reduce flood and erosion risks by reducing vulnerabilities and consequences, even as climate change increases frequency and severity of floods.	Education and Awareness	Emergency Management	\$0-\$10,000	Municipal Operating Budget	01/2025 - 12/2025	High	Riverine and Pluvial Floods/ Extreme Heat	No	18	9	162
BF9	Develop a simple guide for property owners laying out whether or not they should remove debris from their streams, and providing	Reduce flood and erosion risks by reducing vulnerabilities and consequences, even as	Education and Awareness	Department of Communications	\$0-\$10,000	Municipal Operating Budget	01/2025 - 12/2025	High	Riverine and Pluvial Floods	No	18	9	162

Number	Hazard Mitigation and Climate Adaptation Actions	Hazard Mitigation and Climate Adaptation Goal	Type of Action	Responsible Department	Approx. Cost Range	Potential Funding Sources	Timeframe	Priority	Hazard(s)	EJ?	PERSIST Score	STAPLEE Score	PERSIST x STAPLEE =
	contacts for contractors that can assist them. This guide can be developed by the Department of Communications	climate change increases frequency and severity of floods.											
BF10	Coordinate with CLEAR/NEMO to share resources and gain technical support for hazard mitigation actions involving stormwater management and public outreach, which have parallel benefits related to MS4 stormwater permit compliance.	More than one goal.	Prevention	Planning	\$0-\$10,000	Municipal Operating Budget	07/2025 - 06/2026	Low	Riverine and Pluvial Floods	No	18	7	126
BF11	Contact the owners of Repetitive Loss Properties and nearby properties at risk to inquire about mitigation undertaken and suggest options for mitigating flooding in those areas. This should be accomplished with a letter directly mailed to each property owner.	Reduce flood and erosion risks by reducing vulnerabilities and consequences, even as climate change increases frequency and severity of floods.	Property Protection	Planning	\$0-\$10,000	Municipal Operating Budget	01/2026 - 12/2026	High	Riverine and Pluvial Floods	No	19	7	133
BF12	Watch the DEEP Chemical Management and Climate Resilience Webinar: https://portal.ct.gov/DEEP/P2/Chemical-Management-and-Climate-Resilience/Chemical-Management-and-Climate-Resilience	Reduce flood and erosion risks by reducing vulnerabilities and consequences, even as climate change increases frequency and severity of floods.	Education and Awareness	Emergency Management	\$0-\$10,000	Municipal Operating Budget	01/2025-12/2025	Low	Riverine and Pluvial Floods	No	17	7	119
BF13	Participate in EMI and DEMHS courses or the seminars and annual conference held by CIRCA and the Connecticut	Reduce flood and erosion risks by reducing vulnerabilities and consequences, even as	Education and Awareness	Floodplain Manager	\$0-\$10,000	Municipal Operating Budget	01/2025 and annually during this month	High	All Hazards	No	18	6	108

Number	Hazard Mitigation and Climate Adaptation Actions	Hazard Mitigation and Climate Adaptation Goal	Type of Action	Responsible Department	Approx. Cost Range	Potential Funding Sources	Timeframe	Priority	Hazard(s)	EJ?	PERISTS Score	STAPLEE Score	PERSISTS x STAPLEE =
	Association of Flood Managers.	climate change increases frequency and severity of floods.											
BF14	Coordinate with CT SHPO to conduct historic resource surveys, focusing on areas within natural hazard risk zones (such as flood or wildfire hazard zones and areas near steep slopes), to support identification of vulnerable historic properties and preparation of resiliency plans across the state. This action leverages existing resources and best practices for protection of historic and cultural resources through an ongoing statewide initiative by CT SHPO.	Reduce flood and erosion risks by reducing vulnerabilities and consequences, even as climate change increases frequency and severity of floods.	Property Protection	Planning	\$10,000 - \$50,000	SHPO	01/2026 - 12/2026	Medium	All Hazards	No	18	7	126
BF15	Review the Connecticut Cultural Resource Information System (ConnCRIS) to identify and understand historic and archaeological resources in areas of hazard risks found here: https://conncris.ct.gov .	More than one goal.	Property Protection	Planning	\$0-\$10,000	SHPO; Municipal Operating Budget	01/2026 - 12/2026	Medium	Wildfires /Tornadoes and High Winds/ Riverine and Pluvial Floods	No	18	9	162
BF16	Pursue Certification in the SustainableCT program. Make progress with the actions related to hazard mitigation.	More than one goal.	Natural Resources Protection	Planning	\$0-\$10,000	Municipal Operating Budget	01/2027 - 12/2027	Low	All Hazards	No	18	7	126
BF17	Update town website to include hazard mitigation and emergency preparedness tips for town residents, including	More than one goal.	Education and Awareness	Department of Communications	\$0-\$10,000	Municipal Operating Budget	01/2025 - 12/2025	Medium	All Hazards	No	17	7	119

Number	Hazard Mitigation and Climate Adaptation Actions	Hazard Mitigation and Climate Adaptation Goal	Type of Action	Responsible Department	Approx. Cost Range	Potential Funding Sources	Timeframe	Priority	Hazard(s)	EJ?	PERISTS Score	STAPLEE Score	PERISTS x STAPLEE =
	sections corresponding to each hazard considered in this Plan Update.												

Figure 4-1: CIRCA Environmental Justice Rank and Critical Facilities, Bloomfield

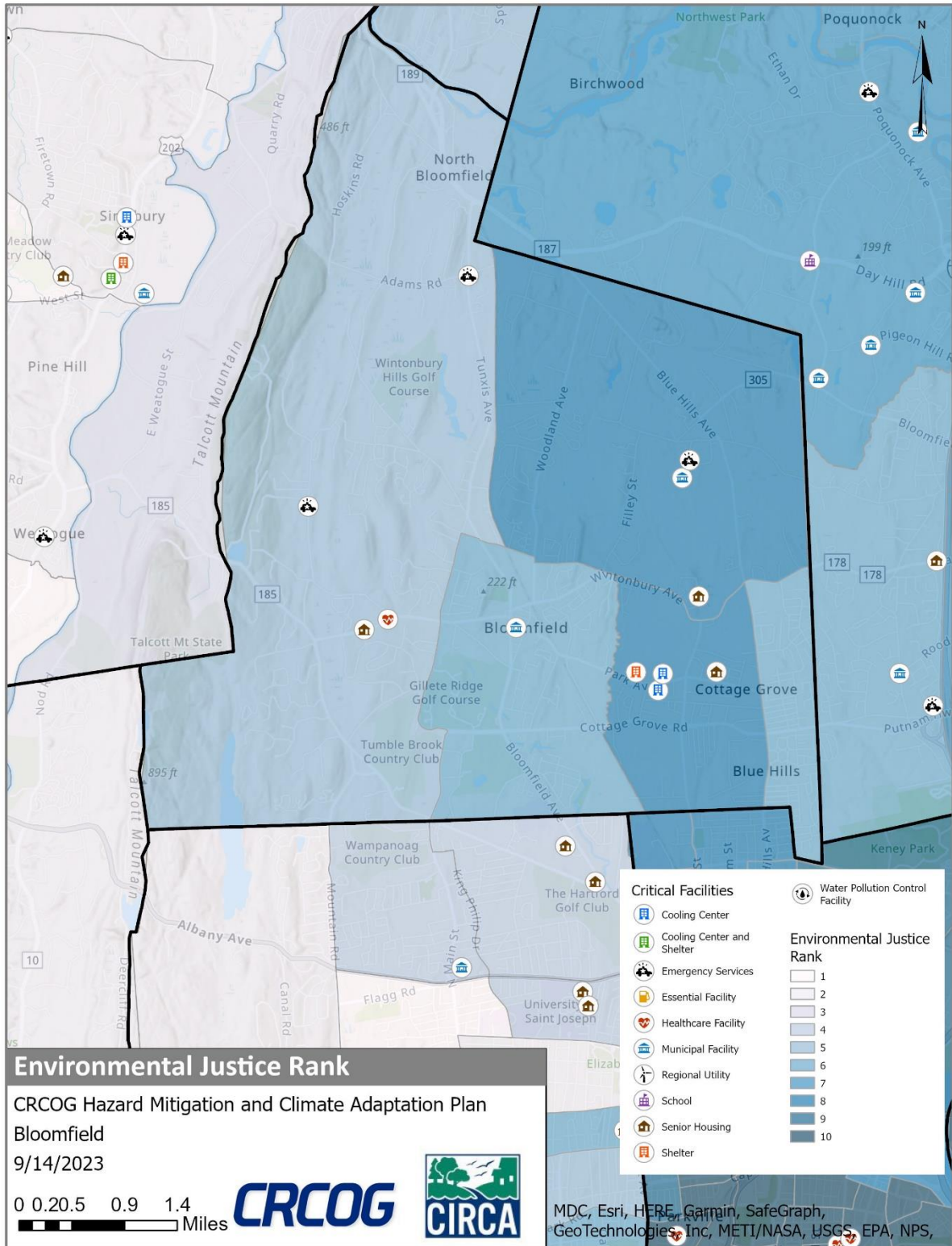


Figure 4-2: FEMA Flood Zones and Critical Facilities, Bloomfield

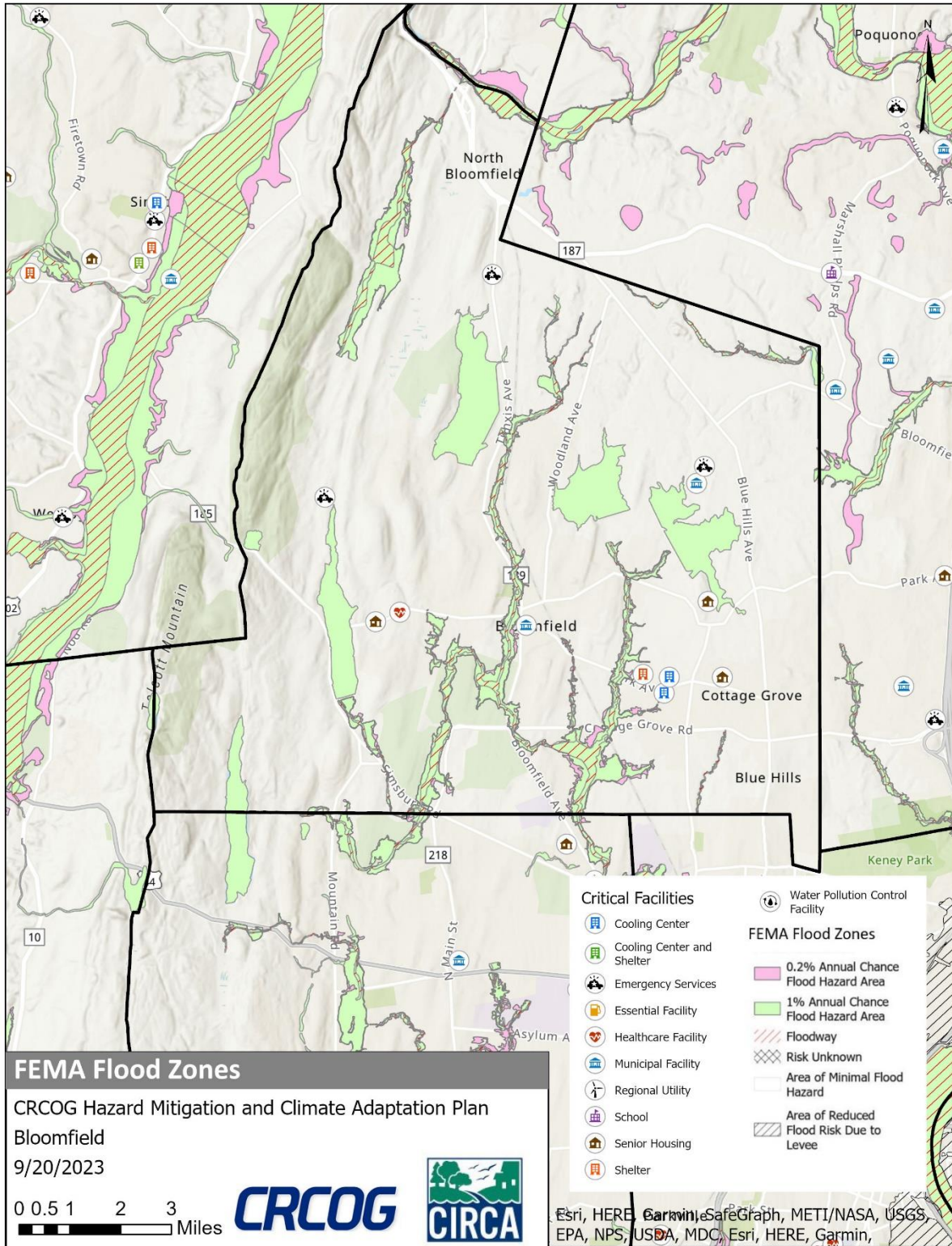


Figure 4-3: CIRCA Flood CCVI and Critical Facilities, Bloomfield

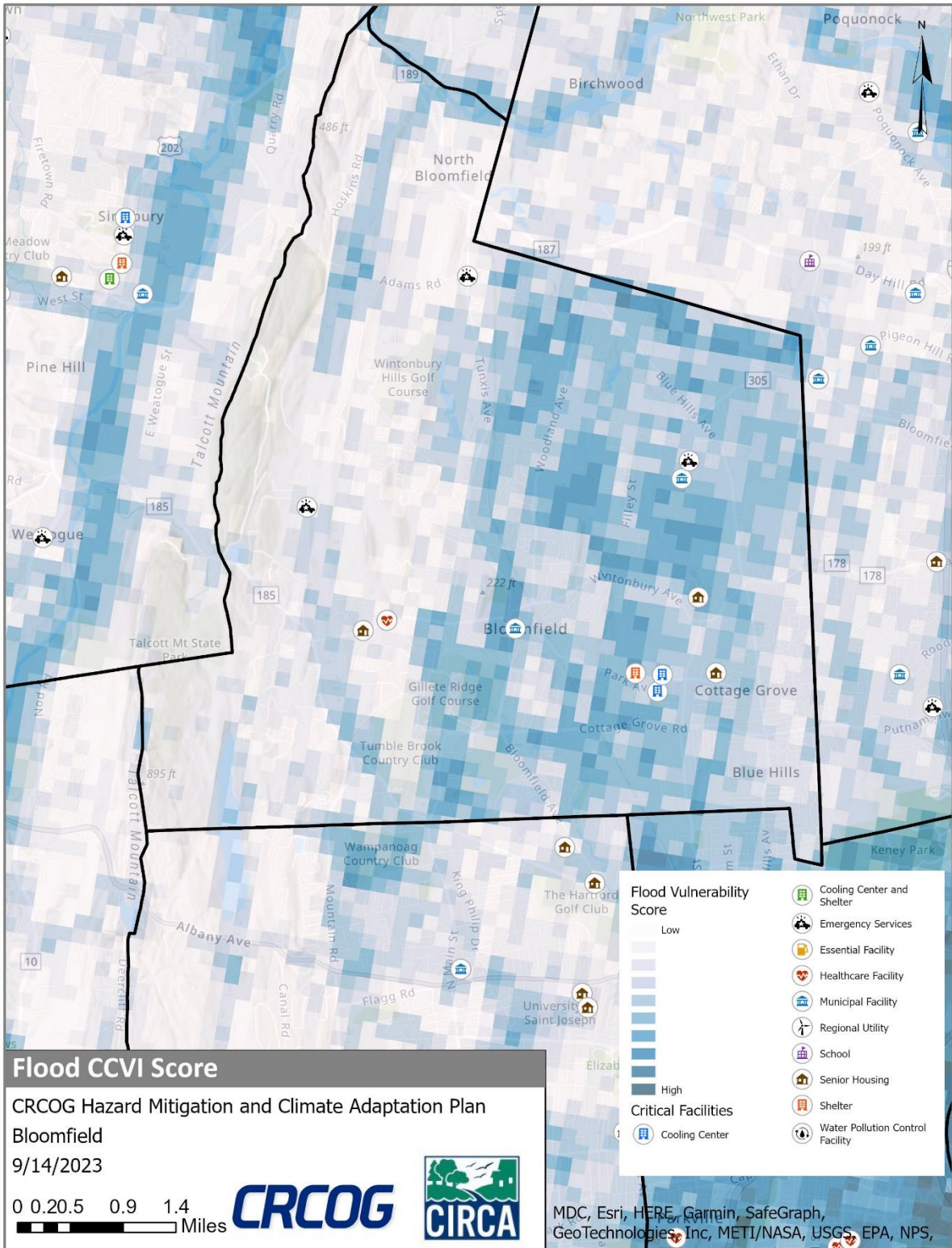


Figure 4-4: Dam Inundation Area and Critical Facilities, Bloomfield

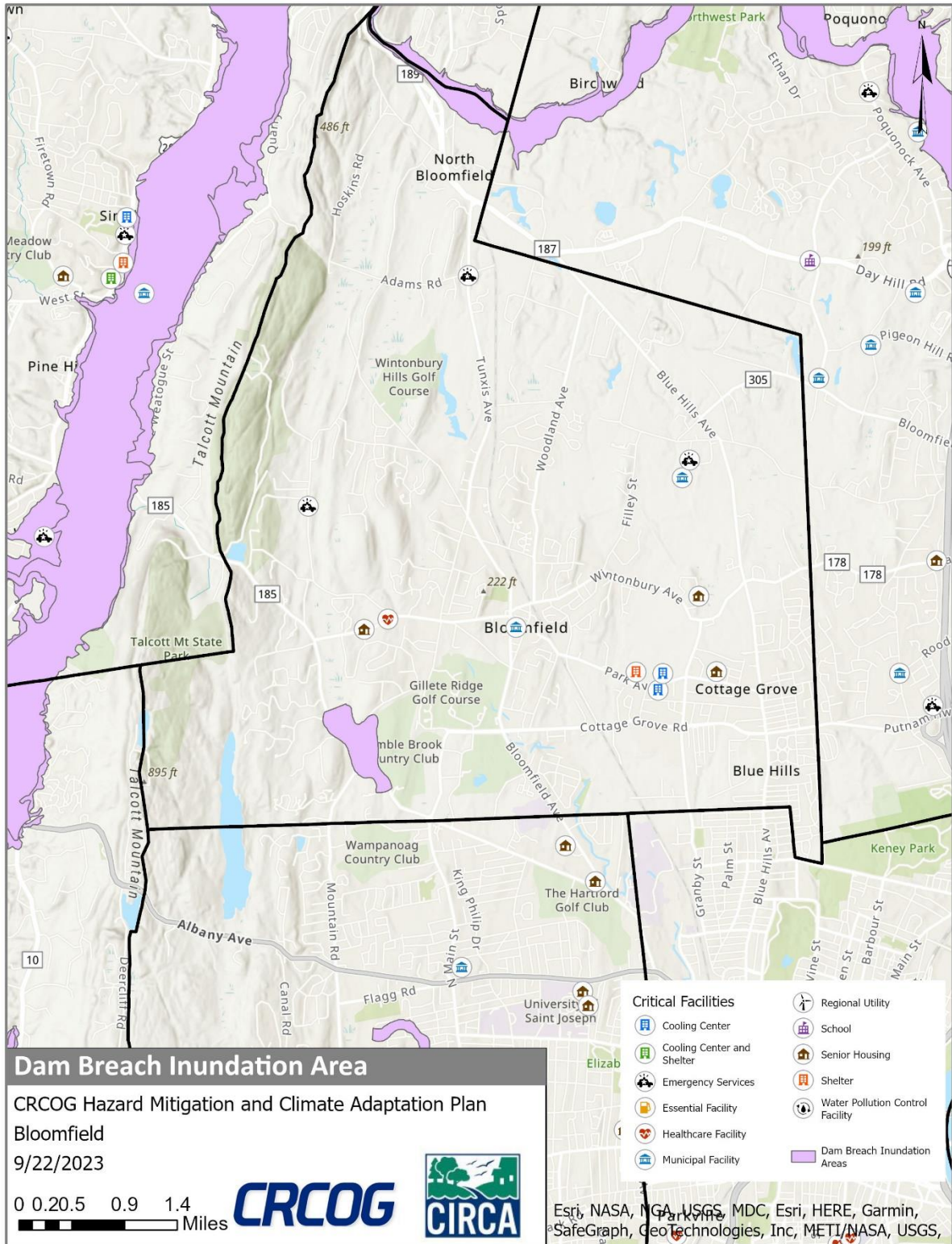


Figure 4-5: CIRCA Heat CCVI and Critical Facilities, Bloomfield

