

# Appendix G: Draft Plan Presentation Materials

# CAPITOL REGION COUNCIL OF GOVERNMENTS (CRCOG)

241 Main Street, 4th Floor, Hartford, CT 06106-5310

Phone: (860) 522-2217/Fax: (860) 724-1274/ E-mail: [mgoulet@crcog.org](mailto:mgoulet@crcog.org)

---

January 17<sup>th</sup>, 2024

FOR IMMEDIATE RELEASE:

In recent weeks, the Capitol Region in Connecticut has grappled with the aftermath of storms, experiencing snow, flooding, and power outages that underscore the risks posed by natural hazards. For two decades, the region's communities have actively participated in the development and adoption of a natural hazard mitigation plan, with updates implemented every five years. Collaborating once again with the Capitol Region Council of Government (CRCOG), the communities have spent the last eight months updating the plan to address the evolving challenges associated with climate change directly. This initiative will result in the creation of a "Hazard Mitigation and Climate Adaptation Plan (HMCAP)," outlining actionable measures to minimize property and life losses during events such as floods, severe wind events, winter storms, wildfires, droughts, extreme heat events, and earthquakes. Your active involvement in shaping this plan is crucial for fostering a resilient and adaptive Capitol Region.

The hazard mitigation and climate adaptation planning effort is being led by the Connecticut Institute for Resilience and Climate Adaptation (CIRCA), which is located at UConn's Avery Point Campus. CIRCA is also leveraging this update to expand its "Resilient Connecticut" program from a narrow pilot region to the entire state, with a strong focus in the Hartford region.

The Hazard Mitigation and Climate Adaptation Plan for CRCOG will continue to make the region's communities eligible for seeking hazard mitigation assistance from the Federal Emergency Management Agency (FEMA) and the State of Connecticut. The plan will also help align the region with new State funding programs that become available in the future.

Public meetings to gather resident input were held in October 2023 and used to inform the draft of the plan. A full draft copy will be available for public review starting from January 22<sup>nd</sup>, 2024. The comprehensive HMCAP draft can be found on the CRCOG Natural Hazard Mitigation Planning webpage at: <https://crcog.org/natural-hazards-mitigation-planning/>. A public meeting to present the draft plan will be held virtually on January 22<sup>nd</sup>, 2024 at <https://s.uconn.edu/b6qwiycdj>. The public comment period will close on February 16<sup>th</sup>, 2024. All edits and input can be sent to Nicole Govert at CIRCA at [nicole.govert@uconn.edu](mailto:nicole.govert@uconn.edu).

Your engagement is instrumental in ensuring a safer and more sustainable future for the CRCOG region.

---

**Member Municipalities:**

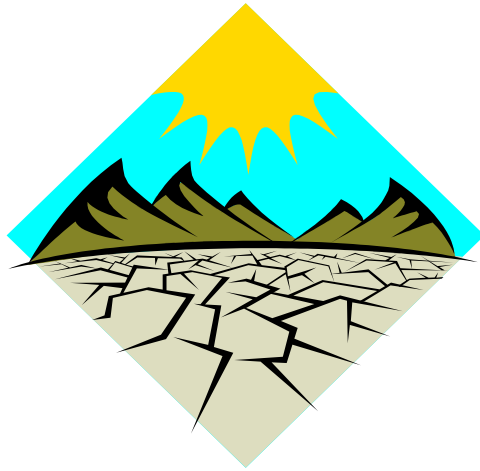
Andover \* Avon \* Berlin \* Bloomfield \* Bolton \* Canton \* Columbia \* Coventry \* East Granby \* East Hartford \* East Windsor \* Ellington \* Enfield \* Farmington \* Glastonbury \* Granby \* Hartford \* Hebron \* Manchester \* Mansfield \* Marlborough \* New Britain \* Newington \* Plainville \* Rocky Hill \* Simsbury \* Somers \* South Windsor \* Southington \* Stafford \* Suffield \* Tolland \* Vernon \* West Hartford \* Wethersfield \* Willington \* Windsor \* Windsor Locks

*If language assistance is needed, please contact CRCOG at (860) 724-4293.  
Para información adicional, o asistencia lingüística gratuita, por favor llame al (860) 724-4293.  
如需更多信息或免费语言协助, 请致电 (860) 724-4293.*

# HAZARD MITIGATION PLAN UPDATE

4<sup>th</sup> Edition:

A New Hazard Mitigation and Climate Adaptation Plan  
(HMCAP) for the Capitol Region of Connecticut



Public Presentation  
January 22<sup>nd</sup>, 2024



# AGENDA



What is a Hazard Mitigation and Climate Adaptation Plan?



Who developed the plan?



What was the planning process like?



What are the goals for the region?



What happens next?





# WHAT IS A HAZARD MITIGATION AND CLIMATE ADAPTATION PLAN?

*Photo by Town of Manchester*

# PURPOSE AND NEED FOR HAZARD MITIGATION PLAN

## What is a Natural Hazard?

- An extreme natural event that poses a risk to people, infrastructure, and resources.



## What is Hazard Mitigation?

- Actions we take now that reduce or eliminate long-term risk to people, property, and resources from natural hazards and their effects.



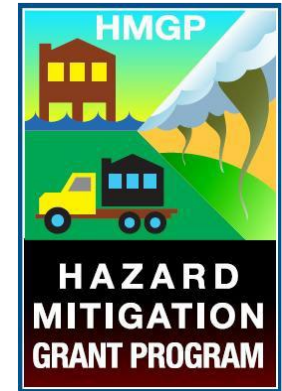
# PURPOSE AND NEED FOR HAZARD MITIGATION PLAN

## Goal of Disaster Mitigation Act of 2000

- Promote hazard mitigation *actions to reduce losses*

## Eligibility for Three Primary Hazard Mitigation Assistance (HMA) Grant Programs

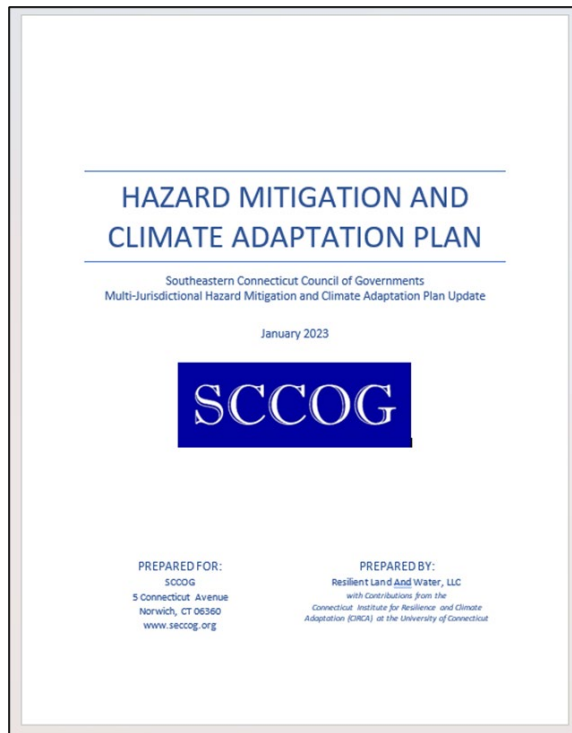
- Building Resilient Infrastructure and Communities (BRIC)
  - Flood Mitigation Assistance (FMA)
  - Hazard Mitigation Grant Program (HMGP)
- 
- BRIC and FMA grant applications are open now!
  - The new DEEP Climate Resilience Fund (DCRF) asks if the application is related to actions in the Hazard Mitigation Plan, demonstrating expanded uses for these plans



**This is the Region's 4<sup>th</sup> Plan**

## Climate Adaptation

- Adjusting social, ecological, infrastructural, or economic systems to respond to, and manage, risks from climate change



## Climate Adaptation Plan (CAP)

- A plan that sets policy and actions for adapting to the effects of climate change
- Not the same as a “climate action plan,” which describes reducing carbon emissions



# COMBINING PROGRAMS TO BENEFIT THE REGION

## Hazard Mitigation Plan Update

Through the Hazard Mitigation Plan, CRCOG and CIRCA:

- **engage** with municipalities to identify concerns and priorities
- **assess** community vulnerabilities and asset
- **identify** opportunities to reduce losses
- **develop** hazard mitigation projects for FEMA funding



## *Resilient Connecticut*

Through *Resilient Connecticut*, CIRCA and its partners:

- **engage** with municipalities to identify concerns and priorities
- **assess** community vulnerabilities and assets
- **identify** opportunities for increased resilience
- **develop** pilot projects to directly fund



**A Combined  
Hazard  
Mitigation and  
Climate  
Adaptation  
Plan for the  
Capitol Region**

# WHAT DOES THE PLAN CONSIST OF?

- 1 multi-jurisdictional document that covers the entire CRCOG region
- 38 individual annexes for each municipality within the CRCOG region
- 16 appendices documenting the planning and risk assessment process
- Many hazard mitigation and climate adaptation actions for each municipality, identified through local planning meetings and regional strategic workshops

All these resources will be available on the CRCOG website later in the year.



WHO DEVELOPED THE PLAN?

# PLANNING TEAM



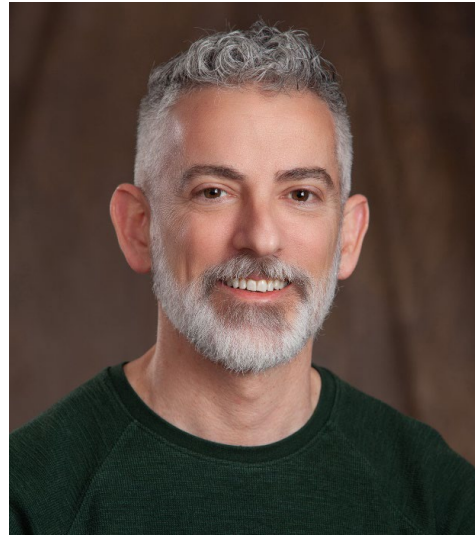
***The Connecticut Institute for Resilience and Climate Adaptation (CIRCA) is serving as the contractor to CRCOG to update this plan and expand the scope into a Hazard Mitigation and Climate Adaptation Plan (HMCAP)***



Mary Buchanan, PhD  
Community Resilience Planner



Nicole Govert, MS  
Community Resilience Planner



David Murphy, PE, CFM  
Director of Resilience Engineering



Maureen Goulet  
Principal Program Manager





WHAT WAS THE PLANNING  
PROCESS LIKE?

# PLANNING PROCESS

1

Meet with community representatives to discuss recent natural hazard challenges, identify changes in community capacity, and to evaluate status of the last plan

2

Conduct community engagement to collect resident feedback and experiences with natural hazards

3

Coordinate with other planning processes to help identify potential strategies and actions for each community

4

Develop draft plans and distribute for review by the communities and the public

5

Submit reviewed and edited plans to DEMHS for review, then to FEMA for final approval

**Community adoptions!**

# WHICH HAZARDS DO WE ADDRESS?

## Extreme and Severe Storms

- Hurricanes and Tropical Storms
- Tornadoes and High Wind Events
- Severe Winter Storms

## Sea Level Rise

- Tidal Connecticut River Flooding

## Changing Precipitation

- Riverine and Pluvial Floods
- Droughts
- Dam Failure

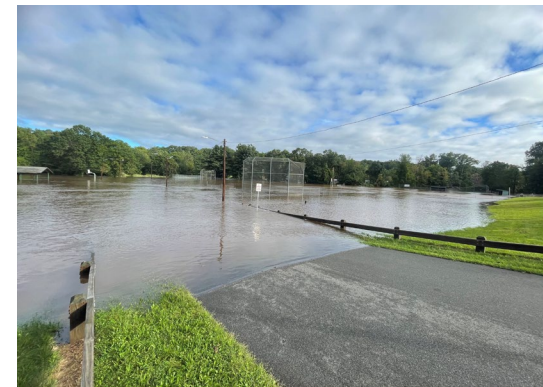
## Rising Temperature

- Extreme Heat
- Wildfires

## Earthquakes

- Not affected by climate change, but addressed in the plan as always

**For each hazard, in addition to asking towns about their concerns, we conducted risk assessments to identify locations at risk, the extent of the risk, previous occurrences of the hazard, and the probability of future events.**



## Extreme Storms

- More intense storms with damaging winds
- More intense rainfall
- Heavier, wet snowfalls

## Sea Level Rise

- Higher tide levels along Connecticut River
- Increased storm surge levels, but these will likely not impact the Capitol Region

## Rising Temps

- Longer and more frequent heat waves
- Landscapes more prone to wildfires

## Changing Precipitation

- More frequent dry spells and flashy droughts (rapid onset)
- More flash floods from more intense rain

## Earthquakes

- Older and compromised infrastructure and buildings could be at greater risk



# FEEDBACK ABOUT VULNERABILITIES AND RISKS

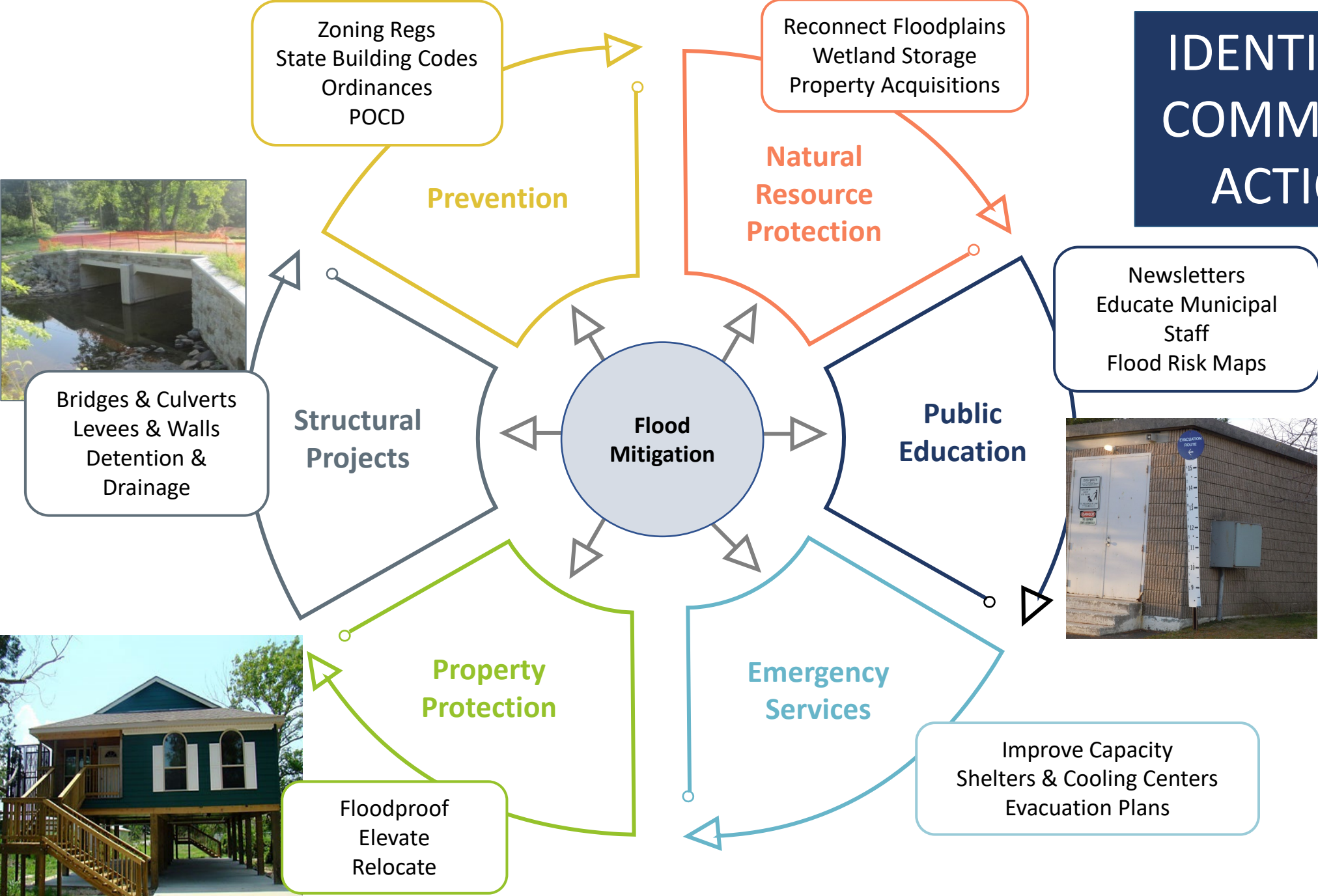
## Met with 38 municipalities from May – November 2023

- Reviewed Hazard Mitigation Plan actions to learn status and think about which can be channeled into resilience projects
- Asked about concerns related to flooding, erosion, extreme heat, and combinations
- Asked about unique concerns beyond the typical confines of a hazard mitigation plan

## “What are your climate-related concerns?”

- Stream crossings
- Power outages during storms
- Tree management
- Riverbank stabilization
- Sewer infrastructure (treatment, pumping, conveyance)
- Stormwater collection and conveyance
- Generators for critical facilities
- Algal blooms in lakes
- DEEP-owned and privately-owned dams
- Elderly and vulnerable populations
- Agriculture
- Private wells

# IDENTIFYING COMMUNITY ACTIONS



## Other Possible Actions

- Strengthen or reinforce shelters, critical facilities, cooling centers
- Create new primary or backup shelters and cooling centers
- Microgrids and standby power
- Bury or harden utilities
- Expand and creatively fund tree maintenance programs
- Enhance fire suppression capabilities with dry hydrants, cisterns, etc.
- Bracing systems and backups for potential earthquake damage
- Innovative public education programs



Hurricane Shutters



Dry Hydrants

A photograph of a two-story grey house with a flooded driveway. A blue barrel is floating in the water in the driveway. The house has two windows on the upper floor with dark shutters. The driveway is dark and reflective, showing the barrel and the house's reflection. The background is filled with green foliage.

WHAT ARE THE GOALS FOR THE  
REGION?

*Photo courtesy of Town of West Hartford*

# We hope this plan will help municipalities to...

1. Ensure that critical facilities are resilient, with special attention to shelters and cooling centers.

2. Address risks associated with extreme heat events, especially as they interact with other hazards.

3. Reduce flood and erosion risks by reducing vulnerabilities and consequences, even as climate change increases frequency and severity of floods

4. Reduce losses from other hazards.

5. Invest in resilient corridors to ensure that people and services are accessible during floods and that development along corridors is resilient over the long term.

# WHAT HAPPENS NEXT?

- The public comment period ends February 5<sup>th</sup>, 2024. You can find the draft plan on the CRCOG Natural Hazard Mitigation Planning webpage if you would like to review it: <https://crocog.org/natural-hazards-mitigation-planning/>
- CIRCA and CRCOG will submit the draft plan for DEHMS review and FEMA approval. This can take several months. FEMA may approve the plan right away or might ask for revisions before approval.
- After FEMA has approved the plan, each CRCOG municipality will need to adopt the plan in order to maintain their individual eligibility for FEMA grant programs. We expect this to happen in Summer 2024.
- We expect the plan to take effect by the end of Summer 2024, just as the previous plan expires.



**What questions, comments, or thoughts  
do you have?**

## Contact Info

### CIRCA:

Mary Buchanan, PhD

- [mary.buchanan@uconn.edu](mailto:mary.buchanan@uconn.edu)

Nicole Govert, MS

- [nicole.govert@uconn.edu](mailto:nicole.govert@uconn.edu)

### CRCOG:

Maureen Goulet

- [mgoulet@crcog.org](mailto:mgoulet@crcog.org)