



23 Newington

Community Overview

Newington is a fully suburban town with a population of about 30,536 encompassing 13.2 square miles and ranging in elevation from 40 to 350 feet above sea level. The northern section of Newington lies in the Park River Watershed, while the southern section is within the Mattabeset River watershed.

Principal watercourses in Town include the Mill, Piper, Rockhole and Webster Brooks. Many state highways run through Newington, including the limited access Route 9 and the Berlin Turnpike (Routes 5/15). CTfastrak, a regional Bus Rapid Transit System, has stations in Newington, and it is expected that in the future the Hartford Line commuter rail will add a stop in Town.

Major industries in Newington include manufacturing of airplane parts, dyes, gauges, tools, and plumbing supplies. There is significant retail space along the Berlin Turnpike. The Town houses the Veterans Administration Connecticut Healthcare System's Primary Care Facility, the Connecticut Department of Transportation, and the Connecticut International Skating Center. Major residential complexes include Newington Ridge, Waverley Drive, and Woodland Estates.

In Newington, approximately 1,000 residential units that have gained approval over the past few years, predominantly in the form of multi-family developments. These developments are not located in flood plains, although a few are adjacent to wetlands, primarily along Berlin Turnpike and Cedar Street. While a significant portion of the approved units remains unconstructed, many are currently in the construction phase. In addition to multi-family developments, there have been two recent single-family subdivisions. Additionally, the Cedar Street area appears susceptible to heat exposure due to the prevalence of asphalt surfaces, warranting attention to mitigate potential heat-related challenges. Development/redevelopment is not increasing risk to natural hazards.

Critical Facilities

Critical Facilities throughout the Capitol Region are listed in Appendix B. In Newington these include the Fire House, Newington High School, the Senior Center, Kellogg Middle School, Wallace Middle School, Police Headquarters (EOC), and the Police Training Facility (Backup EOC).

Table 23-1: Critical Facilities, Newington

Facility	Shelter	Cooling Center	Generator
Newington High School	Primary		X
Senior Center	Secondary, Pets	X	X
Kellogg Middle School	Backup		
Wallace Middle School	Backup		
Police Headquarters (EOC)			X
Police Training Facility (Backup EOC)			
Four (4) Fire stations			
Town Hall		X	X
Town Library		X	
4 Eversource Substations			

During extreme heat events, Newington Senior Center, Town Hall and Library can all be opened as public cooling centers. None of these facilities are official cooling centers. The Town Hall and Senior Center currently have generators, but the Library does not.

The Town Hall was rebuilt in the past five years.

Capabilities

Hazard mitigation is incorporated into Newington's Plan of Conservation and Development (POCD). POCD actions specifically address natural hazards.

Newington has an Emergency Management Team, as well as a Community Emergency Response Team (CERT). FEMA Emergency Management Performance Grant (EMPG) funds have been used to support those teams, as well as other local emergency management efforts.

The Town generally does not permit any new structures in the 1-percent annual-chance flood zone. A local radio station has recently been granted a permit to construct a non-occupied utility building in a flood zone; this is not expected to increase vulnerability. Flooding complaints are tracked through the Highway Department and Engineering Department. Newington last updated its floodplain regulations in 2008.

The Natural Resources Conservation Service (NRCS), under contract by Newington, conducted a study in 2004 of flooding and flood reduction alternatives for the Stamm Road area. The existing FEMA FIS did not factor in the impacts of railroad embankment failure, which occurs relatively frequently; therefore, further study was needed. The NRCS study recommends removing the railroad spur line culvert, replacing existing culverts along the rail line with box culverts sized to the 100-year flow level, and installing various flood proofing measures for eight buildings on Stamm Road and Liberty Street. The Town has approached Amtrak to discuss this study, but Amtrak has not agreed to implement the recommendations, creating a setback to lowering flood risk in the Stamm Road area.

Newington maps evacuation routes and updates them on an ongoing basis. These routes are not posted to the public. The Town has a suite of plowing routes to guide road clearing efforts following winter storms. The Highway Department is responsible for road clearing, while the Parks Department takes care of sidewalks in front of town buildings, fire houses, and along Main Street.

New developments in Newington are required to install utilities below ground. Redevelopment projects greater than 30- to 40-percent of a parcel value often trigger utility retrofit requirements. The Town developed a Low Impact Development (LID) and Stormwater Manual in 2013. The Tree Warden is responsible for clearing downed trees on Town property; the Town reports that the budget for this is sufficient.

The Newington Fire Department has 110 volunteer members, with 28 on call at all times. The department has good response times, as well as mutual aid agreements with neighboring communities. Most of the Town is served by public water, and therefore hydrants are available to fight brush fires that may break out.

The town utilizes the Everbridge Notification System, providing the ability to send emergency alerts to all residents, as well as to target selected areas.

The Majority of municipal buildings, as well as health care and assisted living facilities, have standby power.

The Amtrak and CTfastrak railroad and busway bridge has been replaced in the last five years. A bridge over Piper Brook was also replaced. . The Town has installed a trash rack at Main Street and Dowd Street to help prevent debris from disrupting drainage.

The Town has purchased a snow blower and a loader to assist with snow clearing efforts. The Town has also obtained a new salt shed on Milk Lane that has the capacity to hold 2,000 tons of salt. Following the 2011 winter storms, standby power generators were installed at the majority of municipal buildings, as well as health care and assisted living facilities.

Since the 2019 HMP, the following actions have been incorporated as capabilities:

- Explore possibility of increasing annual budgets for waterway maintenance, snow removal, and tree maintenance.

Capabilities to address natural hazards and the losses that they have caused, have increased since the last plan has been adopted.

Challenges

Challenges Overview

Flooding is a major concern for Newington. The Stamm Road area, which encompasses an industrial area and the Amtrak rail line, frequently experiences flooding; a study of flood reduction alternatives for the area is described in the “Capabilities” section, above. Minor flooding continues to be a problem at Pheasant Run and Vivian Street as the waterway is level with the roadway in this area. The town has dredged in the past. Furthermore, in the vicinity of Willard Avenue and Garfield Street, the rear section of the farm stand is prone to flooding. This issue may be attributed more to maintenance concerns rather than necessitating the installation of an additional detention basin. The town has also seen flooding on Timber Lane.

The Town is also concerned with hurricanes and wind events. Downed trees and wires are among the most significant impacts of storm. There were six roads blocked during Isais due to downed trees and downed wires.

While the municipal water system makes firefighting water available throughout Town, two low pressure areas exist due to high elevation; these are on Lamp Lighter Lane and Webster Street. Hydrants exist at these locations, but the low pressure could affect firefighting capacity.

The town reports having concerns about vulnerable populations living in motels and hotels.

Hazard Losses

The economic losses faced by the community from natural hazards can be estimated by reviewing historic loss figures. Loss estimates are summarized below.

Average Annualized Losses

Average Annualized Loss (AAL) estimates are summarized below. Average Annualized Loss (AAL) figures are useful tools for comparison of the risks faced from different hazards with different likelihoods of

occurring in a given time period. AAL estimates were prepared for each natural hazard which may impact Newington. National Centers for Environmental Information (NCEI) data, from the last 20 years, was categorized by hazard and averaged based on the proportion of population within each town in the CROCG Region. National Flood Insurance Program (NFIP) losses were calculated based on the 50 year span of the program. FEMA Public Assistance (PA) data from the past 11 years was categorized based on hazard and used to compute AAL. United States Department of Agriculture (USDA) from the past 10 years was calculated to get AAL. Expected Annual Loss data from the National Risk Index (NRI) was downloaded and categorized to get AAL for the below hazards. Dam failure data was taken from the 2019-2024 CROCG Hazard Mitigation Plan (HMP) plan since no new dam failures have occurred in the past five years. The 2019 HMP Dam failures were sourced from the 2014 Connecticut Natural Hazard Mitigation Plan Update, with dam failure data supplemented by the National Performance of Dams Program and the Connecticut Department of Energy & Environmental Protection.

Table 23-2: Average Annualized Losses, Newington

Hazard	Source	Average Annualized Losses (AAL)
Hurricanes/Tropical storms	NCEI	\$78,472.29
	NRI	\$947,019.54
	FEMA PA	\$31,843.38
Tornados/High Winds	NCEI	\$29,378.59
	NRI	\$268,837.92
Winter Storms	NCEI	\$23,273.09
	NRI	\$16,425.02
	FEMA PA	\$17,007.01
Flood	NCEI	\$23,786.07
	NRI	\$20,488.91
	NFIP	\$13,250.36
Drought	NRI	\$0.00
	USDA	\$0.00
Extreme Heat	NRI	\$34,685.73
Wildfire	NRI	\$993.63
Earthquakes	NRI	\$88,743.23
Dam Failure	HMP	\$55.00

Losses Summary

A review of the above loss estimates demonstrates that the Town of Newington has experienced significant expenses as a result of natural hazards, and is at risk for additional losses if some less-frequent events were to occur. These actual and potential losses justify hazard mitigation actions to reduce losses in the future.

Mitigation Strategies and Actions

This HMCAP includes new goal statements that are aligned with *Resilient Connecticut* and the efforts of the GC3. The five new goals developed for this HMCAP were developed with cooperation from CIRCA in the *Resilient Connecticut* planning process, and are:

- Ensure that critical facilities are resilient, with special attention to shelters and cooling centers.
- Address risks associated with extreme heat events, especially as they interact with other hazards.
- Reduce flood and erosion risks by reducing vulnerabilities and consequences, even as climate change increases frequency and severity of floods.
- Reduce losses from other hazards.
- Invest in resilient corridors to ensure that people and services are accessible during floods and that development along corridors is resilient over the long term.

The previous goals of the 2019 HMP have been replaced and incorporated into these five new goals in accordance with the explanation in the Multijurisdictional document.

Noted Hazard Mitigation Needs

During the course of this Plan development, multiple hazard mitigation needs of Newington were noted. These are discussed here.

- Implementation of the 2014 NRCS flood reduction recommendations for the Stamm Road area is a top priority for the Town due in large part to planned activity in this area, including the CTfastrak (Hartford-New Britain Busway), The Harford Line (New Haven-Springfield commuter rail service) and plans for the Central CT State University campus. Implementation of the NRCS recommendations will require the cooperation of multiple agencies (Town, State, and Federal), other regulating authorities and neighboring towns, as well as from Amtrak, as rail service would have to be suspended while tracks are removed and replaced.
- Town staff should assess existing flood detention areas for ease of access and maintenance.
- Acquire generators for critical facilities including the EOC and backup shelters.
- Conduct an evaluation of assets situated in flood-prone areas, particularly along Connecticut Avenue/Brentwood. The town should consider redesigning the town-owned detention basin that was not constructed to current standards, featuring a single inlet that functions as both an inlet and an outlet. Enhancing its drainage capacity can be achieved in-house through the addition of a new inlet structure and converting the existing inlet-outlet into a dedicated outlet with a weir structure. This modification is expected to be a cost-effective solution. At the second location, Badger Field outlet, which discharges onto Timber Lane at Audubon Ave, previous work has been undertaken on the detention basin. However, to expedite downstream drainage, the project requires the installation of a "sister pipe" alongside the existing one. This project is more substantial and costly due to the need for additional linear footage to replace the catch basin with a double catch basin.
- Newington should consider conducting a count of individuals residing in hotels and motels, ensuring the town possesses the necessary capacity and resources to provide shelter during emergencies or hazardous situations.
- Newington should consider implementing a tree forestry plan to address dead/dying trees that block roadways and cause power outages.

Status of Previous Mitigation Strategies and Action

The Town of Newington reviewed the mitigation actions proposed in the 2019 Capitol Region Natural Hazards Mitigation Plan Update and determined the status of each. That information is included in the table below.

Table 23-3: Status of Previous Mitigation Strategies and Actions, Newington

No.	Action	Notes	Status
3	Identify cost-effective ways to mitigate or reduce flooding in the Stamm Road area, which includes Repetitive Loss properties, especially those that do not require working with Amtrak.	<p>Still an issue.</p> <p>The town staff have previously been contacted by a state rep related to cross-boundary flooding in the New Britain side of this road and a nearby brewery. This is reportedly a multijurisdictional challenge that affects New Britain, Berlin, and Cromwell. Amtrak’s participation is critical to enact a larger solution, because of the need to participate in expanding the culverts in at least two locations.</p>	Carry forward – maybe with revisions to indicate the importance of getting Amtrak on board.
8	Perform an assessment of assets located in flood-prone areas.	<p>This is still a need. Flood problems are definitely common in the town, and likely increasing. Town staff report that they are “chasing” flood problems, and lots of complaints came in during the storms of July 2023.</p> <p>The town is actively pursuing grant money to address two specific flooding concerns:</p> <ul style="list-style-type: none"> • 1st location: Connecticut Avenue / Brentwood. Redesign detention basin that is town-owned, but was not constructed to current standards. It has one inlet that is the same as the outlet. By adding an inlet structure and turning the current inlet-outlet into an outlet with a weir structure, this will improve capacity of drainage. This can be done in house, and may be relatively inexpensive. <p>2nd location: Badger Field outlet, which drains onto Timber Lane at Audubon Ave. Town has done previous work on detention basin. Need to add a “sister pipe” along the existing one. This will allow the downstream system to drain faster. This is a more expensive project, as more linear feet is needed to replace catch basin with double catch basin.</p>	Carry forward the action about assessment, plus add two actions for the two projects mentioned.
4	Equip the Backup EOC (Police Training Facility) with a generator and communication equipment	Still needs to be done.	Carry forward

No.	Action	Notes	Status
10	Equip backup shelters (Kellog and Wallace Middle Schools) with emergency generators	These are unofficial shelters since they don't have backup power. Looking at ARPA funding to install a transfer switch at Wallace. Keep this action.	Carry forward
11	Upgrade equipment related to waterway maintenance, snow removal, and tree maintenance. Include, specifically, adding the purchase of a large-tree bucket-truck for the Parks and Grounds Department to the Town's long-range plans.	Have purchased 2 pieces of equipment. Bucket truck was purchased. Retire the action, as the intent has been met.	Complete / Retire
2	Explore possibility of increasing annual budgets for waterway maintenance, snow removal, and tree maintenance.	Town staff note in the meeting that this would be a question for the Parks Department. After the meeting, Rob provided an update by email: "I spoke with Clay from the town's park dept. They have doubled their tree maintenance budget in the past few years to about \$50,000."	Complete/ Capability / Retire
12	Pursue opportunities to bury utilities in appropriate locations and scenarios, such as during a road reconstruction.	Keep this on as continuing item.	Carry forward
9	Work with MDC to identify potential hazard mitigation actions for MDC facilities, and list those actions in the next HMP Update.	MDC provides water and sewer service in Newington, but doesn't have many facilities in Newington (except maybe some small pump stations and water tank). CIRCA will reach out to MDC directly to see if they have any concerns related to Newington. If not, can retire this action.	Retire
6	Coordinate with NEMO and CRCOG to share resources and gain technical support for hazard mitigation actions involving stormwater management and public outreach, which have parallel benefits related to MS4 stormwater permit compliance.	Coming into compliance with MS4. The Town is in the process of entering into an agreement with a firm to provide MS4 sampling and reporting. Action should remain.	Carry forward with revisions to update to current types of resources
5	Conduct outreach to local small businesses with the aim of preventing the accidental release and pollution from chemicals stored and used at their facilities during or following natural hazard events.	There are a few businesses for which this would be relevant. These facilities provide above and beyond Tier II inventories, but no outreach about flooding. Town staff would like to keep this action, but it will likely come to a staffing issue or grant possibility.	Carry forward
7	Participate in EMI courses or the seminars and annual conference held by the Connecticut Association of Flood Managers.	Town staff would like to keep this action. Leave as it is.	Carry forward

No.	Action	Notes	Status
13	Coordinate with CT SHPO to conduct historic resource surveys, focusing on areas within natural hazard risk zones (such as flood or wildfire hazard zones and areas near steep slopes), to support identification of vulnerable historic properties and preparation of resiliency plans across the state. This action leverages existing resources and best practices for protection of historic and cultural resources through an ongoing statewide initiative by CT SHPO.	. Keep this action to assess historic resources with a focus on flood vulnerability. Obtain and review the new SPHO layer.	Revise to use the new SHPO layer
1	Enter the Sustainable CT program through Registration and review actions that can be undertaken to pursue Certification. Make progress with the actions related to hazard mitigation.	Newington is not yet part of Sustainable CT. Sustainable CT has not been integrated into grant opportunities. Internal discussion needed to decide on whether to keep or drop.	Wait for an update

Active Mitigation Strategies and Actions

The Town proposed to initiate several new mitigation actions for the upcoming five years. Additionally, a number of actions from the previous planning period are being carried forward or replaced with revised actions. These are listed below.

Each of the following actions has been prioritized based on FEMA guidelines, listed from highest to lowest priority, and numbered.

Table 23-4: Active Mitigation Strategies and Actions, Newington

Number	Hazard Mitigation and Climate Adaptation Actions	Hazard Mitigation and Climate Adaptation Goal	Type of Action	Responsible Department	Approx. Cost Range	Potential Funding Sources	Timeframe	Priority	Hazard(s)	EJ?	PERSISTS Score	STAPLEE Score	PERSISTS x STAPLEE =
NW1	Equip the Backup EOC (Police Training Facility) with a generator and communication equipment	Ensure that critical facilities are resilient, with special attention to shelters and cooling centers.	Preparedness & Emergency Response	Emergency Management	\$100,000 - \$500,000	FEMA HMA; STEAP	07/2024 - 06/2025	High	All Hazards	Benefits an EJ tract	19	5	95
NW2	Equip backup shelters (Kellog and Wallace Middle Schools) with emergency generators	Ensure that critical facilities are resilient, with special attention to shelters and cooling centers.	Preparedness & Emergency Response	Emergency Management	\$100,000 - \$500,000	FEMA HMA; STEAP	07/2025 - 06/2026	High	All Hazards	Benefits an EJ tract	19	5	95
NW3	Acquire a generator for the town library.	Ensure that critical facilities are resilient, with special attention to shelters and cooling centers.	Preparedness & Emergency Response	Emergency Management	\$100,000 - \$500,000	FEMA HMA; STEAP	07/2024 - 06/2025	High	All Hazards	Benefits an EJ tract	19	5	95
NW4	Pursue opportunities to bury utilities in appropriate locations and scenarios, such as during a road reconstruction.	Ensure that critical facilities are resilient, with special attention to shelters and cooling centers.	Preparedness & Emergency Response	Public Works	>\$1M	STEAP; Municipal CIP Budget	07/2024 - 06/2026	Medium	All Hazards	Benefits an EJ tract	18	2	36
NW5	Ensure that transportation and transit options are available to bring people to cooling centers.	Address risks associated with extreme heat events, especially as they interact with other hazards.	Preparedness & Emergency Response	Emergency Management	\$10,000 - \$50,000	Transit; IJJA BBFP	07/2024 - 06/2026	High	Extreme Heat	Benefits an EJ tract	19	3	57
NW6	Work with Amtrak, DOT, and CIRCA to identify cost-effective ways to mitigate or reduce flooding in the Stamm Road area, and the	Invest in resilient corridors to ensure that people and services are accessible during floods and that	Structural Project	Public Works	>\$1M	CT DOT; CIRCA; LOTCIP; DCRF; FEMA HMA	07/2024 - 06/2026	High	Riverine and Pluvial Floods	Benefits an EJ tract	20	2	40

Number	Hazard Mitigation and Climate Adaptation Actions	Hazard Mitigation and Climate Adaptation Goal	Type of Action	Responsible Department	Approx. Cost Range	Potential Funding Sources	Timeframe	Priority	Hazard(s)	EJ?	PERSISTS Score	STAPLEE Score	PERSISTS x STAPLEE =
	surrounding Resilient CT Opportunity Area (ROAR) which includes Repetitive Loss properties.	development along corridors is resilient over the long term.											
NW7	Perform an assessment of assets located in flood-prone areas.	Reduce flood and erosion risks by reducing vulnerabilities and consequences, even as climate change increases frequency and severity of floods.	Prevention	Economic Development	\$50,000 - \$100,000	DCRF; FEMA HMA	07/2024 - 06/2026	Medium	Riverine and Pluvial Floods	Benefits an EJ tract	19	6	114
NW8	Redesign the detention basin on Connecticut Avenue / Brentwood that is town-owned, but was not constructed to current standards. This basin has one inlet that is the same as the outlet. Add an inlet structure and turn the current inlet-outlet into an outlet with a weir structure to improve drainage.	Reduce flood and erosion risks by reducing vulnerabilities and consequences, even as climate change increases frequency and severity of floods.	Natural Resources Protection	Public Works	>\$1M	DCRF; FEMA HMA	07/2024 - 06/2026	High	Riverine and Pluvial Floods	No	19	4	76
NW9	Add a "sister pipe" along the existing pipe at the Badger Field outlet, which drains onto Timber Lane at Audubon Ave. This will allow the downstream system to drain faster.	Reduce flood and erosion risks by reducing vulnerabilities and consequences, even as climate change increases frequency and severity of floods.	Structural Project	Public Works	\$50,000 - \$100,000	STEAP; Municipal CIP Budget	07/2025 - 06/2026	Medium	Riverine and Pluvial Floods	No	18	6	108
NW10	Evaluate ways to mitigate or reduce flooding in the Pheasant Run and Vivian Street area.	Reduce flood and erosion risks by reducing vulnerabilities and consequences, even as climate change	Prevention	Public Works	\$50,000 - \$100,000	DCRF; FEMA HMA	07/2024 - 06/2026	Medium	Riverine and Pluvial Floods	No	18	6	108

Number	Hazard Mitigation and Climate Adaptation Actions	Hazard Mitigation and Climate Adaptation Goal	Type of Action	Responsible Department	Approx. Cost Range	Potential Funding Sources	Timeframe	Priority	Hazard(s)	EJ?	PERISTS Score	STAPLEE Score	PERISTS x STAPLEE =
		increases frequency and severity of floods.											
NW11	Conduct an assessment of the flooding issue at the back side of the farm stand on Willard Avenue and Garfield Street, with a focus on maintenance practices and potential improvements.	Reduce flood and erosion risks by reducing vulnerabilities and consequences, even as climate change increases frequency and severity of floods.	Natural Resources Protection	Public Works	\$10,000 - \$50,000	DCRF; FEMA HMA	07/2025 - 06/2026	Medium	Riverine and Pluvial Floods	No	18	6	108
NW12	Assess existing flood detention areas for ease of access and maintenance.	Reduce flood and erosion risks by reducing vulnerabilities and consequences, even as climate change increases frequency and severity of floods.	Natural Resources Protection	Public Works	\$10,000 - \$50,000	Municipal Operating Budget	07/2025 - 06/2026	Medium	Riverine and Pluvial Floods	Benefits an EJ tract	19	6	114
NW13	Conduct a town wide assessment of stream crossings to identify vulnerabilities and develop a priority list for maintenance and upsizing.	Reduce flood and erosion risks by reducing vulnerabilities and consequences, even as climate change increases frequency and severity of floods.	Structural Project	Public Works	\$10,000 - \$50,000	DCRF; Municipal CIP Budget	07/2025 - 06/2027	Medium	Riverine and Pluvial Floods	Benefits an EJ tract	19	6	114
NW14	Work with the Connecticut Institute for Resilience and Climate Adaptation (CIRCA) to develop an appropriate scope of work to address flooding and extreme heat concerns in Resilient Opportunity Areas (ROARs).	More than one goal.	More than one type	Public Works	\$0-\$10,000	CIRCA	07/2024 - 06/2027	Medium	Riverine and Pluvial Floods/Extreme Heat	Benefits an EJ tract	19	5	95

Number	Hazard Mitigation and Climate Adaptation Actions	Hazard Mitigation and Climate Adaptation Goal	Type of Action	Responsible Department	Approx. Cost Range	Potential Funding Sources	Timeframe	Priority	Hazard(s)	EI?	PERSISTS Score	STAPLEE Score	PERSISTS x STAPLEE =
NW15	Coordinate with CLEAR/NEMO to share resources and gain technical support for hazard mitigation actions involving stormwater management and public outreach, which have parallel benefits related to MS4 stormwater permit compliance.	Reduce flood and erosion risks by reducing vulnerabilities and consequences, even as climate change increases frequency and severity of floods.	Prevention	Public Works	\$0-\$10,000	Municipal Operating Budget	07/2024 - 06/2025	Medium	Riverine and Pluvial Floods	Benefits an EJ tract	19	7	133
NW16	Conduct outreach to local small businesses with the aim of preventing the accidental release and pollution from chemicals stored and used at their facilities during or following natural hazard events.	Reduce flood and erosion risks by reducing vulnerabilities and consequences, even as climate change increases frequency and severity of floods.	Education and Awareness	Economic Development	\$0-\$10,000	Municipal Operating Budget	01/2026 - 12/2026	Low	Riverine and Pluvial Floods	Benefits an EJ tract	18	7	126
NW17	Participate in EMI courses or the seminars and annual conference held by the Connecticut Association of Flood Managers.	Reduce flood and erosion risks by reducing vulnerabilities and consequences, even as climate change increases frequency and severity of floods.	Education and Awareness	Floodplain Manager	\$0-\$10,000	Municipal Operating Budget	01/2025 and annually during this month	Medium	All Hazards	Benefits an EJ tract	18	6	108
NW18	Review the Connecticut Cultural Resource Information System (ConnCRIS) to identify and understand historic and archaeological resources in areas of hazard risks found here: https://conncris.ct.gov .	Reduce flood and erosion risks by reducing vulnerabilities and consequences, even as climate change increases frequency and severity of floods.	Property Protection	Economic Development	\$0-\$10,000	SHPO; Municipal Operating Budget	01/2026 - 12/2026	Medium	Wildfires/Tornadoes and High Winds/Riverine and Pluvial Floods	Benefits an EJ tract	19	9	171
NW19	Update town website to include hazard mitigation and emergency	More than one goal.	Education and Awareness	Economic Development	\$0-\$10,000	Municipal Operating Budget	01/2025 - 12/2025	Medium	All Hazards	Benefits	18	7	126

Number	Hazard Mitigation and Climate Adaptation Actions	Hazard Mitigation and Climate Adaptation Goal	Type of Action	Responsible Department	Approx. Cost Range	Potential Funding Sources	Timeframe	Priority	Hazard(s)	EJ?	PERSISTS Score	STAPLEE Score	PERSISTS x STAPLEE =
	preparedness tips for town residents, including sections corresponding to each hazard considered in this Plan Update.									an EJ tract			

Figure 23-1: CIRCA Environmental Justice Rank and Critical Facilities, Newington

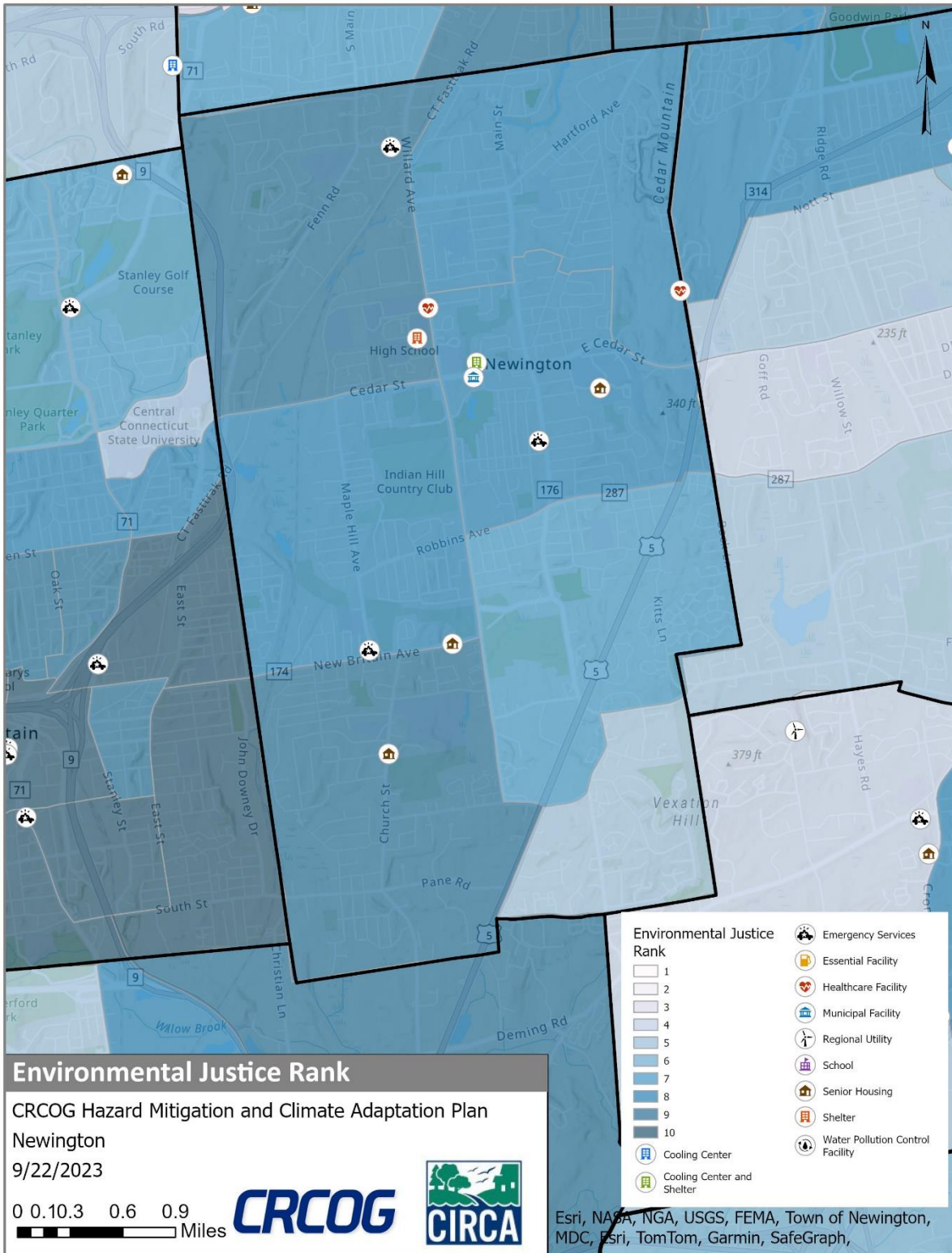


Figure 23-2: FEMA Flood Zones and Critical Facilities, Newington

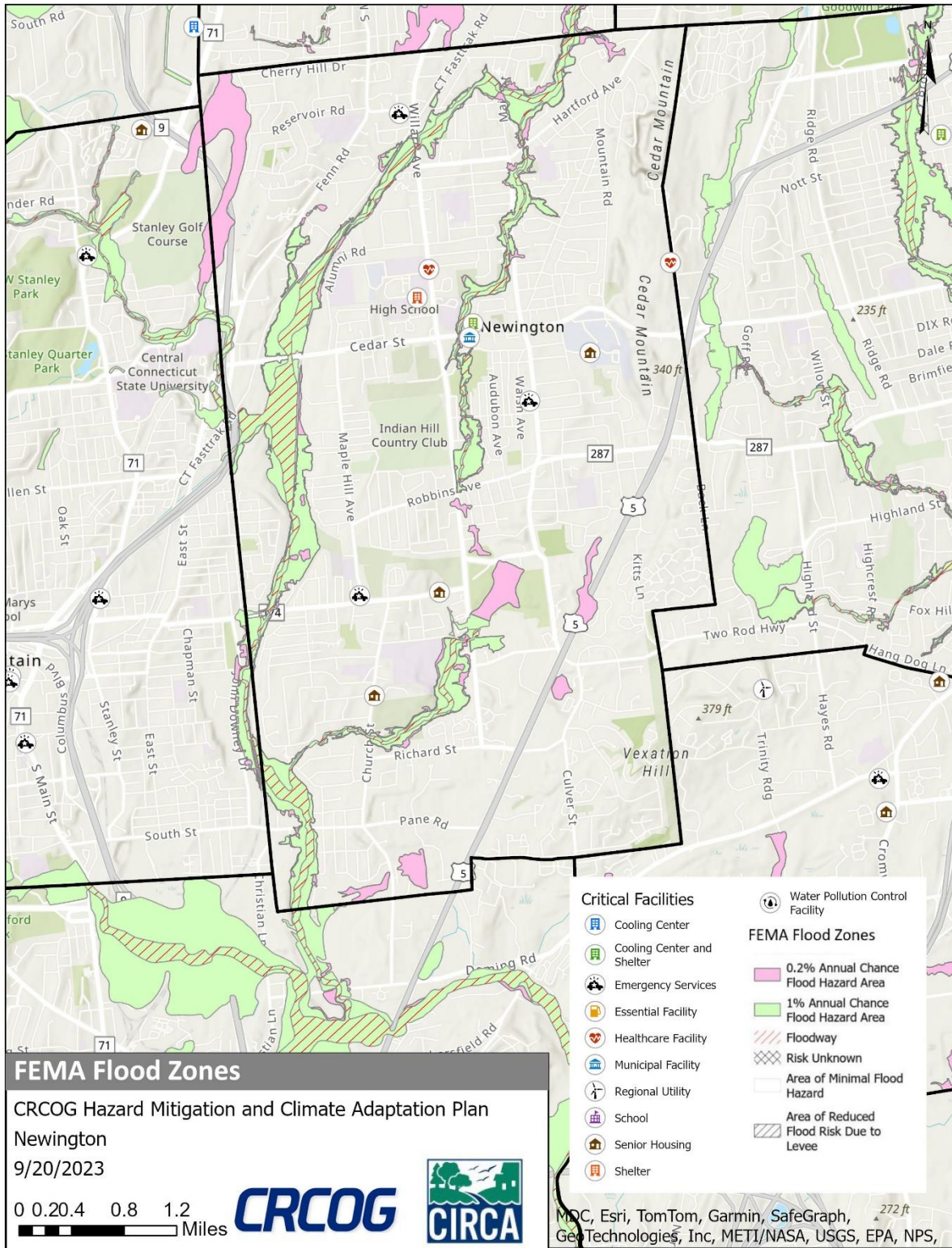


Figure 23-3: CIRCA Flood CCVI and Critical Facilities, Newington

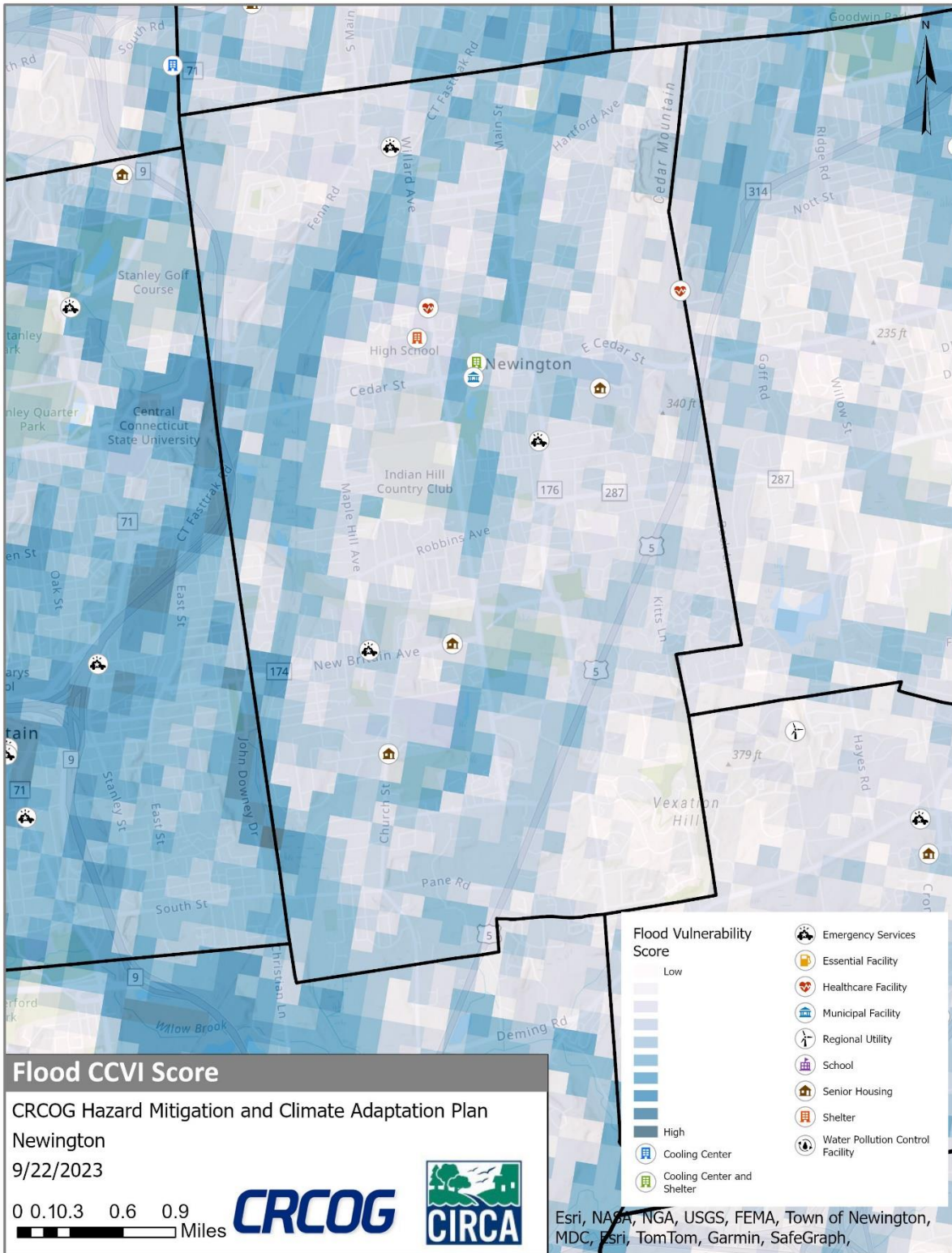


Figure 23-4: Dam Inundation Area and Critical Facilities, Newington

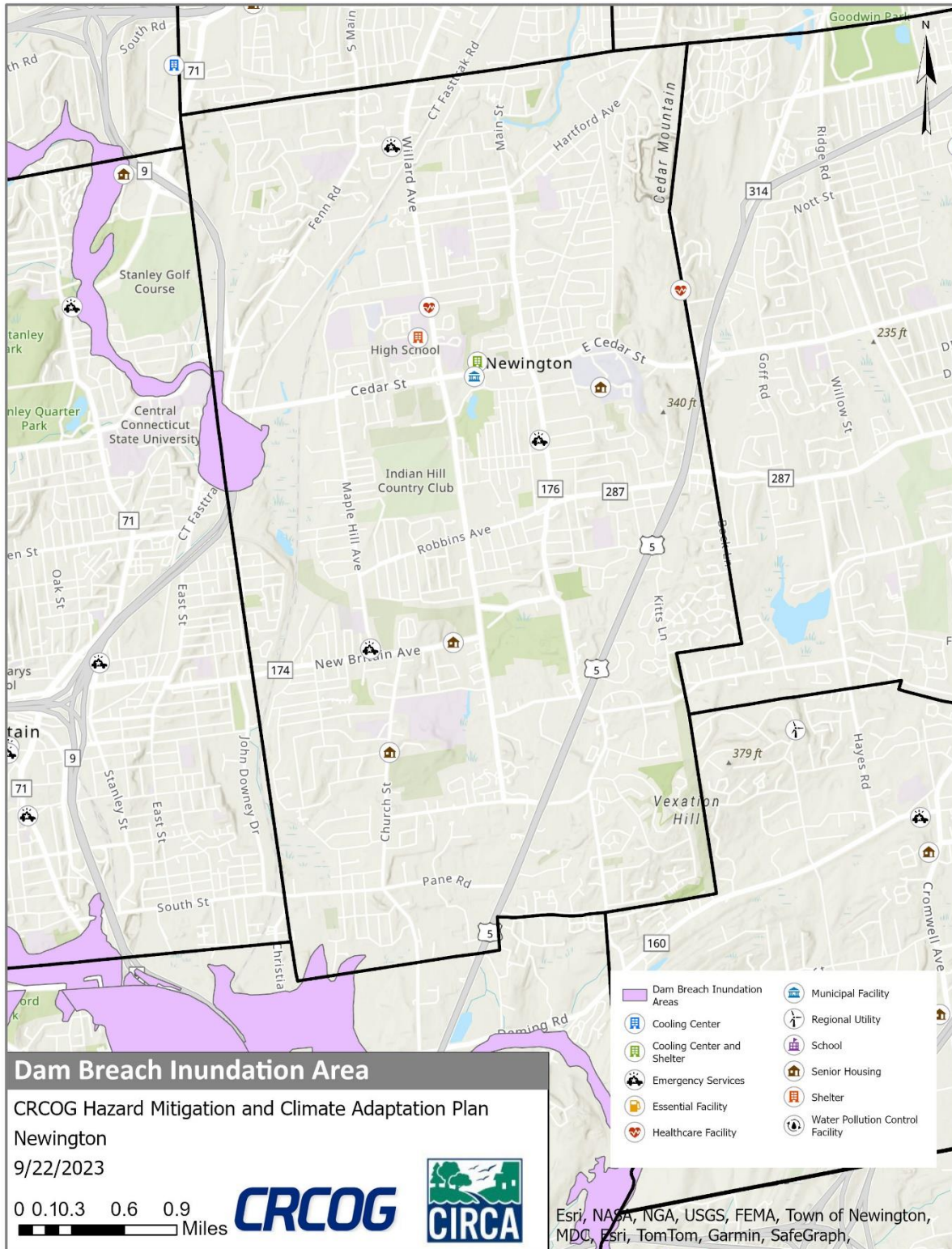


Figure 23-5: CIRCA Heat CCVI and Critical Facilities, Newington

